



www.czsinomac.com

常州三诺机械科技有限公司
CHANGZHOU SINOMAC MACHINERY TECHNOLOGY CO.,LTD

地址：江苏省常州市武进区龙飞路35号
ADD: No.35,Longfei Road,Wujin District,Changzhou City, Jiangsu Province,China
电话 (Tel) : +86-519-86056618
传真 (Fax) : +86-519-86055518
邮箱 (Email) : info@czsinomac.com
网址 (Web) : <http://www.czsinomac.com>

国内服务Domestic service
手机 (Mb) : +86-138 1368 4353
邮箱 (Email) : ming.zhou@czsinomac.com

国际服务International service
手机 (Mb) : +86-139 1234 2699
邮箱 (Email) : info@czsinomac.com



We provide you with
PROFESSIONAL AUTOCLAVES
service support!

我们为您提供专业的蒸压釜服务支持！

INDEX

目录

我们 ABOUT US	01	
蒸压釜 AUTOCLAVES	03	
热压罐 COMPOSITE AUTOCLAVE	05	
固化炉 CURING OVENS	09	
玻璃釜&夹层生产线 GLASS LAMINATION AUTOCLAVES & CLEAN ROOM	11	
硫化罐 THE AUTOCLAVE FOR RUBBER VULCANIZATION	15	
灭菌罐 TREATMENT OF MEDICAL WASTE	17	
碳化罐 THE AUTOCLAVE FOR WOOD CARBONIZATION	18	
建材釜 BUILDING MATERIALS AUTOCLAVES	19	
服务 SERVICES	21	

Highest safety standards

S U CE EAC ISO 9001 EN ISO 3834-2 CERTIFIED AD2000



常州三诺机械科技位于中国压力容器之乡——江苏常州，是中国领先的提供先进蒸压釜解决方案及其控制系统的高科技企业；我们生产的蒸压釜，其技术处于国内外领先水平，应用场合涵盖复合材料固化、安全夹层玻璃胶合、光伏组件封装、木材防腐碳化处理、橡胶硫化、医废处理等领域。

公司自创建以来，一直致力于蒸压釜及其控制系统的创新，我们的旗舰控制软件TPC系统能满足客户最严格的要求；软件按照航空级别要求设计，可以在复杂情况下满足高性能要求。

我们的目标是成为蒸压釜和控制系统领域的领导者！

SINOMAC is located in the hometown of autoclave, Changzhou, Jiangsu, China. It is a leading high-tech enterprise specialized in providing advanced autoclave solutions. SINOMAC autoclaves with excellent performances are widely used for composites curing, safety glass laminating, PV module encapsulation, wood carbonization, rubber vulcanization, medical waste treatment, and so on.

Since the establishment, we have always devoted ourselves to the innovation of autoclave and its control system. Now our Thermal Processing Control (TPC) software, designed according to aviation level, has been able to meet the most stringent technological requirements and the operating performance is safe and stable.

Our goal is to be a leader in the field of autoclave and control system.



AUTOCLAVES

SINOMAC持续创新确保我们的蒸压釜及控制系统处于领先水平
SINOMAC CONTINUOUS INNOVATION ENSURES THAT OUR AUTOCLAVE AND CONTROL SYSTEMS ARE IN THE LEAD

我们的旗舰控制软件TPC系统功能齐全，可以满足客户最严格的要求并持续创新。

实现对过程控制的自动，手动或者冗余操作，能接入局域网，进入工厂的DCS系统，实现集中管理控制。

优化的风道结构，高效的循环风机，卓越的保温隔热系统，智能化的温控调节，确保温度的均匀性和最大节能。

独立的主、辅冷却系统，提高冷却效率的同时，能实现对冷却梯度精确线性的控制。

加热系统可采用电加热或者蒸汽和导热油间接加热。

具备机械、电子和软件多重安全连锁保护功能。

辅助设备系统集成控制，如储气罐，空压机，真空系统，制氮机和冷却站等

可以提供多种认证标准GB150\ASME\PED\AD，规格定制。

我们注重外观细节的处理，追求高端品质。

Our flagship control software TPC systems are fully functional, meet the most stringent requirements of the clients and continue to innovate.

It can realize manual, automatic or redundant operation of process control. And can access the LAN, into the factory DCS system, to achieve centralized management control.

Optimized air duct structure, efficient circulation fan, excellent thermal insulation system and intelligent temperature control and regulation, all of these ensure uniformity of temperature and maximum energy saving.

Independent main & auxiliary cooling systems can improve cooling efficiency and achieve accurate linear control of cooling gradient at the same time.

The heating system can be electric heating, steam heating and indirect thermal oil heating.

The autoclave has mechanical, electronic and software multiple security chain protection functions.

Integrated control of auxiliary equipment systems such as gas storage tanks, air compressors, vacuum systems, nitrogen generators and cooling stations, etc

Provide a variety of certification standards GB150\ASME\PED\AD and specifications customization.

We focus on the appearance details, pursue high-end quality.



Highest safety standards



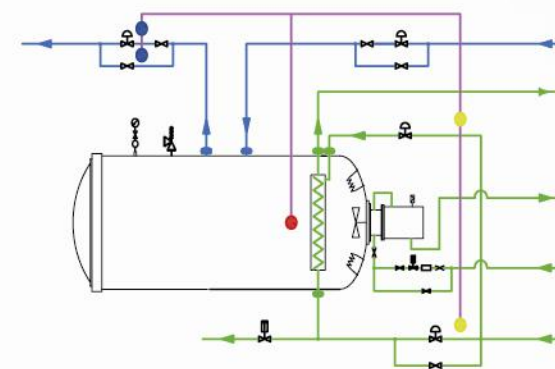
SINOMAC气动快开门方式
SINOMAC Pneumatic quick opening mode



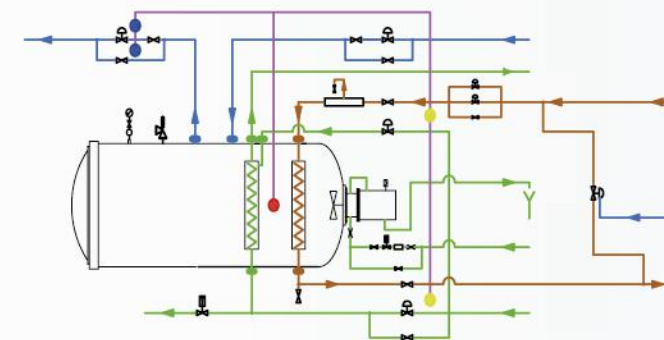
SINOMAC电动吊臂快开门方式
SINOMAC Electric boom quick opening mode



SINOMAC液压快开门方式
SINOMAC Hydraulic quick opening mode



电加热玻璃釜系统原理图
System schematic diagram for electric heating glass autoclave



蒸汽、导热油、天然气间接加热玻璃釜系统原理图
System schematic diagram for indirect steam, thermal oil and gas heating.



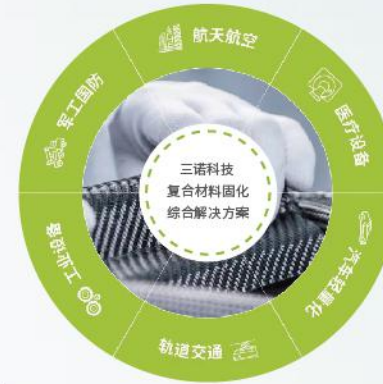
COMPOSITE AUTOCLAVE

SINOMAC是热压罐及其控制系统设计专家



SINOMAC热压罐是一种针对聚合物基复合材料成型工艺特点的工艺设备，使用热压罐成型是制造连续纤维增强热固性复合材料制件的主要方法，适用于先进复合材料结构、蜂窝夹层结构及金属或复合材料胶接结构的成型。具有温度和压力控制精度高、结构安全可靠、系统稳定性好、能耗低、操作和维护简单等优点，能实现模块化和系列化，可满足不同领域、不同工艺和不同规格的需求。

SINOMAC composite autoclave is a kind of process equipment for forming polymer-based composite materials, composite autoclave forming is the main method of manufacturing continuous fiber reinforced thermosetting composite materials, apply to form advanced composite structure, honeycomb sandwich structure and metal or composite adhesive structure. It has the advantages of high temperature and pressure control precision, safe and reliable structure, stable system, low energy consumption, simple operation and maintenance, and can realize modularization and serialization, which can meet the needs of different fields, different processes and different specifications.



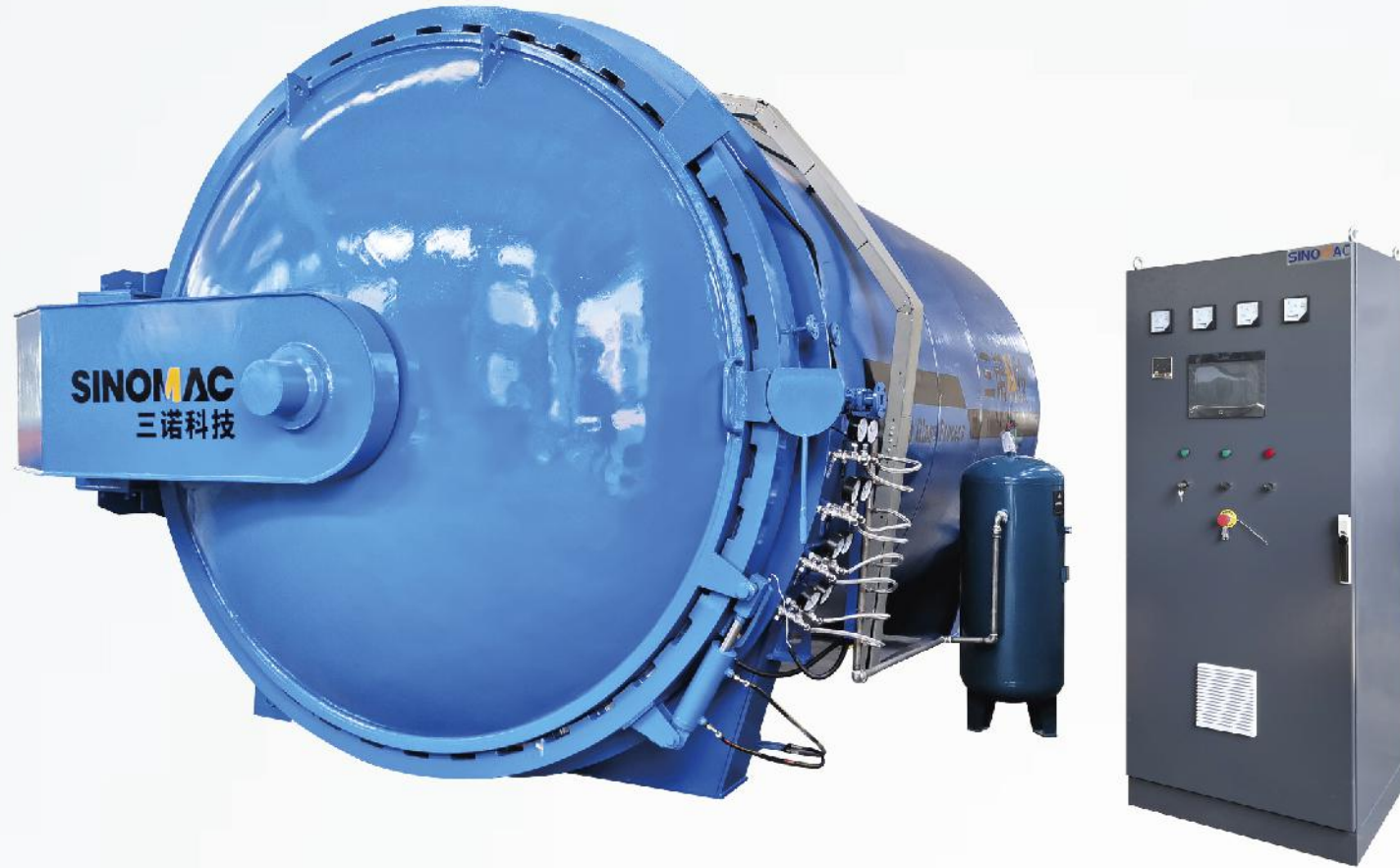
SINOMAC热压罐优势

- 先进热能工艺控制(TPC)系统，性能可靠，功能齐全
- 独特对流设计，平衡和强化循环气流，保证热压罐内温度均匀
- 严格按照波音和空客标准进行温度均匀性检测
- 加热、加压、冷却等模块设计，方便保养维修
- 设备尺寸多规格自由定制
- 多种制造认证标准，GB150\ASME\PED\AD服务全球



COMPOSITE AUTOCLAVE

SINOMAC HAS BEEN THE AUTHORITATIVE DESIGN EXPERT ON AUTOCLAVE AND CONTROL SYSTEM.



Highest safety standards

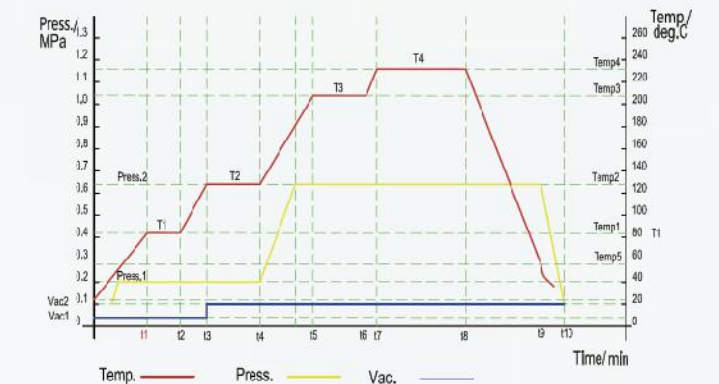
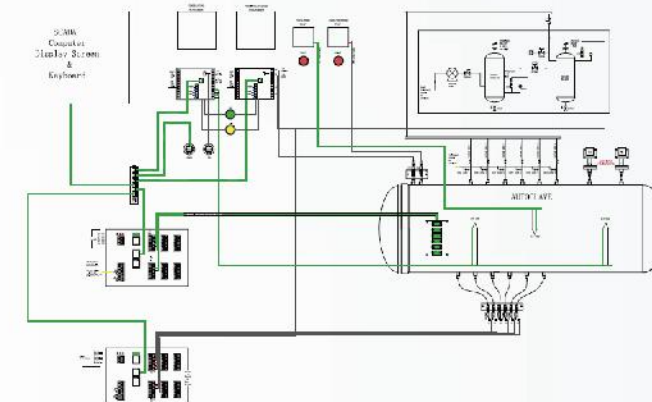
S U CE EAC ISO 9001 EN ISO 3834-2 CERTIFIED AD2000

技术参数及规格 Technical parameters and specifications

名称/ITEM	设计参数 /DESIGN PARAMETER
工作有效直径/Working Diameter	600-6000(mm)
工作有效长度/Working Length	1000-30000 (mm)
工作温度/Working Temperature	100-420 (°C)
工作压力/Working Pressure	0.6-4.2 (Mpa)
真空度/Vacuum Pressure	≤-0.098 (Mpa)
温度均匀性/Temperature Uniformity	±3.0 (°C)
升、减温速率/Rising and Decreasing Temperature Rate	0-5 (°C/min)
升、减压力速率/Rising and Decreasing Pressure Rate(bar/min)	0-1 (bar/min)

SINOMAC composite autoclave advantages

- Advanced thermal process control (TPC) system with reliable performance and complete functions
- Unique convection design, balancing and strengthening circulating air flow to ensure uniform temperature in autoclave
- Testing temperature uniformity in strict compliance with Boeing and Airbus standards
- Heating, pressure, cooling module design, easy maintenance and repair
- Equipment Dimensions Multi-specification Custom
- Various of manufacturing standards, GB150\ASME\PED\AD, Services global



CURING OVENS

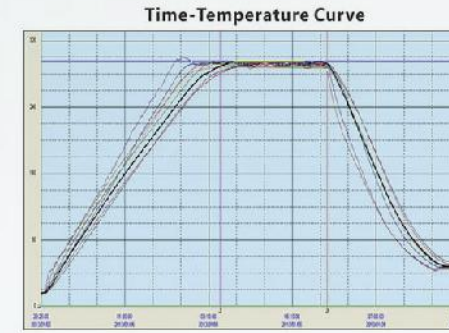
SINOMAC提供复材专用固化炉
SPECIAL CURING FURNACE FOR COMPOSITE MATERIALS

Sinomac复材固化炉特点：

- 不加压的热压罐，完全区别于普通烘箱改装的固化炉
- 工艺要求与控制功能和热压罐一致
- 严格按照波音和空客标准进行温度均匀性检测
- 可以定制工作室尺寸和其他选配功能
- 为复合材料量身定制的工艺控制软件
- 安全多级用户管理，让生产管理变高效
- 空气偶控温，产品电偶控温，差值电偶等多种控温模式
- 智能判断异常电偶，异常真空值，保证每炉产品品质
- 完整数据记录，零件分析报告
- 独特模块设计，分区控制，实现产能优化

Features:

- Unpressurized autoclave, completely different from the ordinary oven modified curing oven
- Process requirements and control function are consistent with autoclave
- Testing temperature uniformity in strict compliance with Boeing and Airbus standards
- Customizable working room dimension and other optional features
- Process control software customized for composite materials
- Secure multi-level user management to make production more efficient
- Air couple temperature control, product electric couple temperature control, difference electric couple and other temperature control modes
- Intelligent judgment of abnormal couple, abnormal vacuum value to ensure the quality of each furnace product
- Complete data records, part analysis reports
- Unique module design, zoning control, capacity optimization



- AEROSPACE
- AUTOMOTIVE
- MOTO SPORTS
- MARINE INDUSTRIES



Technical parameters and specifications

名称ITEM	设计参数 DESIGN PARAMETER
炉体有效尺寸Effective size	规格定制Custom specifications
设计工作温度Design/Working temperature	80°C-420°C
温度均匀性Temperature uniformity (°C)	±3°C
真空度 Vacuum Pressure	≤-0.098
升温速率Heating rate	0-5°C
部件热电偶Component thermocouple	2-12支



GLASS LAMINATION AUTOCLAVES & CLEAN ROOM

FLAT (ARCHITECTURAL) GLASS

PHOTOVOLTAIC GLASS

AUTO LAMINATED GLASS

特点

基于PLC控制的TPC系统软件，全自动控制且稳定安全

U型对流结构设计，确保温度均匀，提高成品率

镍铬合金加热元件，高寿命、高电热转换效率，加热功率比例输出高效节能。

独立抽真空系统，操作方便

适用于安全夹层玻璃、汽车夹层玻璃、光伏组件封装

CHARACTERISTIC

TPC system software based on PLC control, fully automatic control and stable safety

U-shaped convection structure design ensures uniform temperature and improves yield

Nickel chromium alloy heating element, high service life, high electric heat conversion efficiency, heating power ratio output, high efficiency and energy saving.

Independent vacuum system, easy to operate

It is suitable for safety laminated glass, automotive laminated glass and photovoltaic module packaging

SINOMAC是玻璃蒸压釜及其控制系统设计专家

SINOMAC has been the authoritative design expert on glass autoclave and control system.



Highest safety standards



型号/MODEL	釜体内径 /Inner Diameter	有效长度 /Working Length	设计温度 /Design Temperature	设计压力 /Design Pressure	最大玻璃尺寸 /Max. Glass Size	加热功率 /Heating Power
SN-BGF1200	1200mm	2000mm	160°C	1.5Mpa	1000X2000mm	54KW
SN-BGF2040	2000mm	4000mm	160°C	1.5Mpa	1600X4000mm	72kw
SN-BGF2660	2650mm	6000mm	160°C	1.5Mpa	2300X6000mm	144kw
SN-BGF2860	2850mm	6000mm	160°C	1.5Mpa	2500X6000mm	162kw
SN-BGF3060	3000mm	6000mm	160°C	1.5Mpa	2650X6000mm	192kw
SN-BGF3080	3000mm	8000mm	160°C	1.5Mpa	2650X8000mm	225kw
SN-BGF3380	3350mm	8000mm	160°C	1.5Mpa	3000X8000mm	270kw
SN-BGF35100	3500mm	10000mm	160°C	1.5Mpa	3150X10000mm	441kw
SN-BGF36120	3650mm	12000mm	160°C	1.5Mpa	3300X12000mm	567kw

★ 其他规格可以定制生产 Other specifications can be customized

