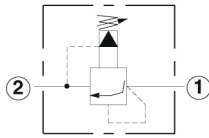
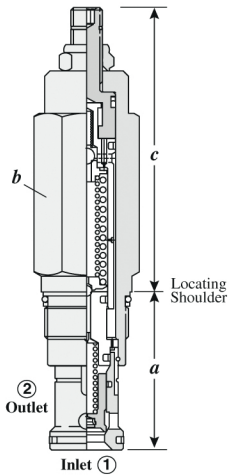
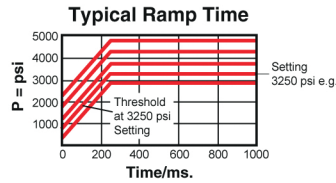
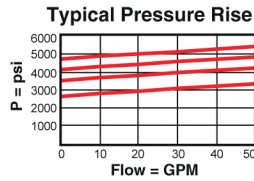


PILOT OPERATED, BALANCED POPPET, SOFT START



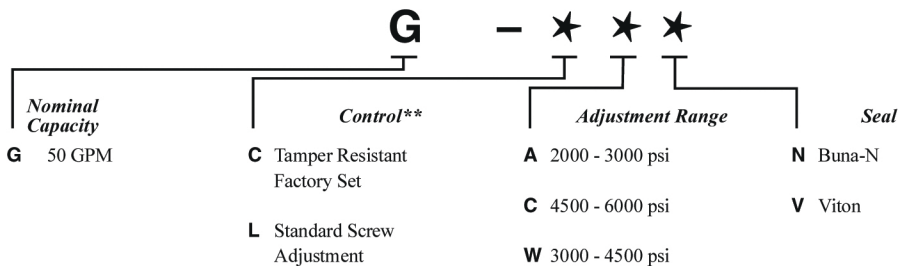
| Capacity | Typical Cartridge Model Code | Cavity | Cartridge Dimensions | | | | Installation Torque (lb. ft.) |
|----------|------------------------------|--------|----------------------|--------|------|------|-------------------------------|
| | | | a | b | L | C | |
| 50 GPM | TDRPGT - LAN | T - 3A | 1.88 | 1 1/8" | 3.38 | 3.47 | 45/50 |

Performance Curves



- Maximum operating pressure = 5000 psi
- Will accept maximum pressure at Port 2.
- Factory pressure settings established at 4 GPM
- Shifting time from minimum to maximum setting 250 ms.
- Control pilot flow = 10 to 25 in³/min.

OPTION ORDERING INFORMATION



Patents:
 U.S. #6,039,070;
 Germany EP 1 001 197;
 Japan #3,119,230

** See page 162 for information on Control Options

Adjustment Range Options:
 A is standard set at 2000 psi.
 C is standard set at 4500 psi.
 W is standard set at 3000 psi.

Customer may specify pressure setting.