



YQSDON LASER



# FIBER LASER CUTTING MACHINE BROCHURE



FOCUS ON THE APPLICATION AND  
DEVELOPMENT OF THE LASER INDUSTRY

# YS-TS/H SERIES PLATE AND TUBE INTEGRATED FIBER LASER CUTTING MACHINE



(The picture is for reference only, the appearance and size are subject to the actual factory equipment.)

## MODEL INTRODUCTION:

- ◆ It can cut rectangular pipes, square pipes, oval pipes, round pipes and special-shaped pipes, as well as angle steel, channel steel and other profiles at high speed.
- ◆ It has the characteristics of high speed, high precision and high cost performance.
- ◆ The front and rear full servo-driven electric clamping chuck, the clamping diameter is 010-320mm, and the chuck uses extended jaws.
- ◆ Save tailings, adjustable speed, convenient operation, low noise, high speed, and high precision.
- ◆ Can cut intersecting lines, the best choice for professional production of pipes, steel structures and pipelines.



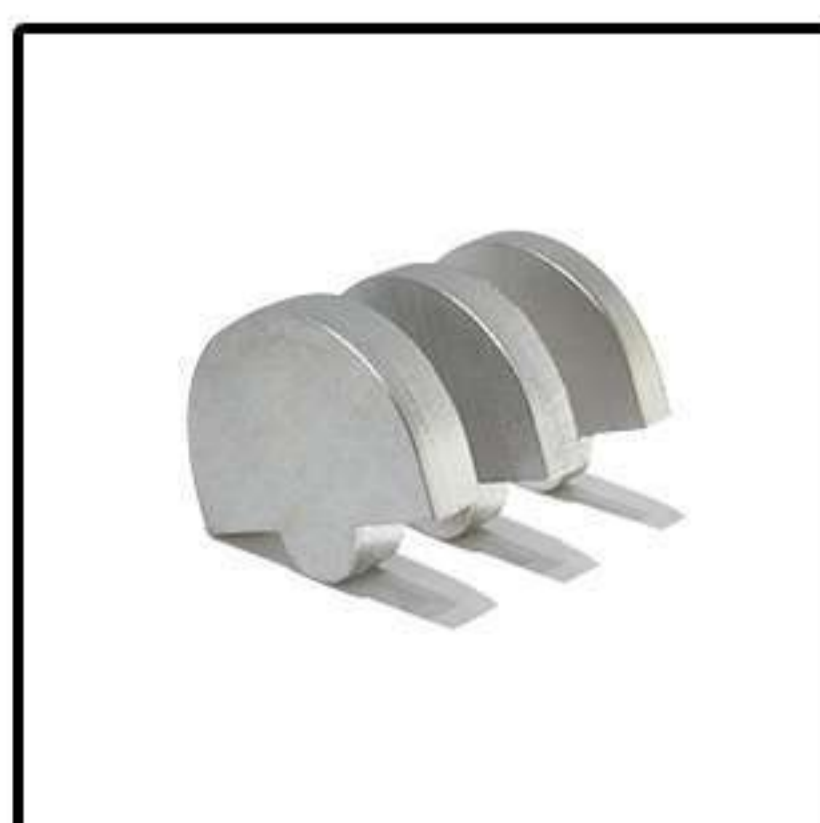
## TECHNICAL PARAMETERS:

Model	YS-TS3015H
Laser source power (optional)	1000/1500/2000/2500/3000/4000W
Processing area (L*W)/mm	3000*1500
Pipe clamping range (circum-circle diameter)/mm	Φ10-Φ220(300/350)
X/Y axis location accuracy	±0.05mm/m
X/Y axis repeat location accuracy	±0.03mm
Max location speed	100m/min
Max acceleration	1.2g
Dimension (L*W*H) /mm	8000*3552*2000

## APPLICATION FIELD:

Sheet metal processing, aviation, aerospace, electronics, electrical appliances, subway accessories, automobiles, food machinery, textile machinery, engineering machinery, precision accessories, etc.

## SAMPLE DISPLAY:





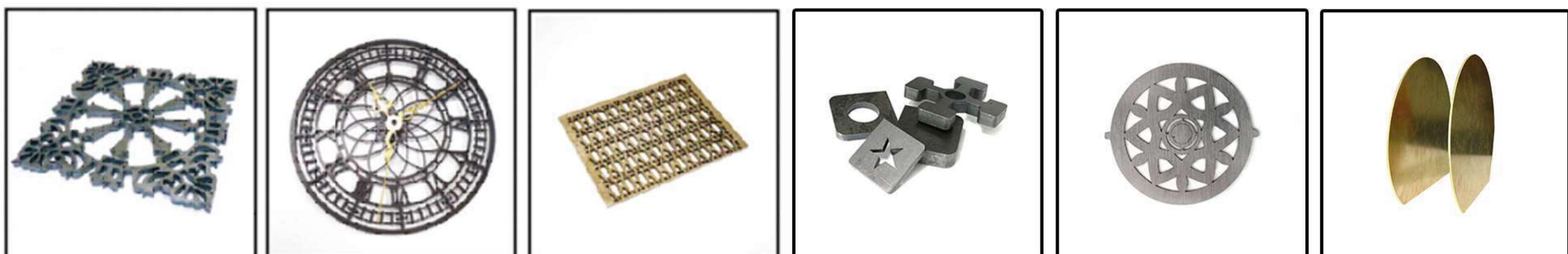
## TECHNICAL PARAMETERS:

Model	YS-S3015H	YS-S4015H	YS-S4020H	YS-S6020H
Processing area (L* W)/mm	3000*1500	4000*1500	4000*2000	6000*2000
X/Y axis location accuracy	±0.05mm/m	±0.05mm/m	±0.05mm/m	±0.05mm/m
X/Y axis repeat location accuracy	±0.03mm	±0.03mm	±0.03mm	±0.03mm
Max location speed	100m/min	100/120m/min	100/120m/min	100/120m/min
Max acceleration	1.2g	1.2g/1.5g	1.2g/1.5g	1.2g/1.5g
Dimension (L*W*H) /mm	5000*2432*2000	6000*2432*2000	6000*2780*2000	8500*3000*2000

## APPLICATION FIELD:

Widely used in metal crafts, hardware products, precision machinery, auto parts, glasses, jewelry, nameplates, electronics, toys, advertising and other industries.

## SAMPLE DISPLAY:



## TECHNICAL PARAMETERS:

Model	YS-3DFS
mechanism	Multi-joint robot
Number of control axes	6 axis
Arm span	1853mm
Installation method	Ground installation, upside down installation, tilt installation
Maximum speed of wrist movement	2000mm/s
Wrist load	25kg
Repeatability	±0.02mm
Robot quality	210kg
Input power	3kva (1kw)
Ambient temperature	0~45°C
environment humidity	Usually below 75%RH (no condensation)

## MODEL INTRODUCTION:

- ◆ We attach great importance to the stability of our products. For this reason, we have focused on optimizing the circuit, gas circuit and cooling system, and all core components are selected from international or industry well-known brands;
- ◆ Our equipment has strong scalability in the later stage, and can add dust and smoke protection rooms, rotating workbenches, mobile workbenches, automated tooling and other applicable configurations according to customer requirements, and can realize seven-axis and eight-axis linkage;
- ◆ Our 3D special cutting head is equipped with an anti-collision system as standard, and can quickly return to position after a collision;
- ◆ In response to the high-precision control requirements of laser cutting, we optimized the motion program of the manipulator and jointly developed the 3D laser cutting system software with FANUC;
- ◆ We have developed a three-dimensional dedicated follow-up system, which can not only adjust the frequency, power, and duty cycle of the laser, but also comes with a graded perforation process, which is very convenient when adjusting the cutting process;
- ◆ Offline programming mapping software can be selected for customers, which greatly shortens the calibration time and improves production efficiency;
- ◆ The whole machine is easy to operate, normal training can be on duty within a week, and we have professional after-sales personnel to provide life-long free training services to escort customers, so that customers have no worries.

## PNEUMATIC SYSTEM:

- ◆ The gas path system adopts Japanese SMC or Parker, solenoid valve, pressure regulating valve, pressure sensor, etc., which can realize real-time air pressure detection and air pressure alarm to ensure the stability of the air pressure during the cutting process. This system has the characteristics of strong stability and convenient operation.

# APPLICATION

## ▶ LASER CUTTING MACHINE APPLICATION

Construction machinery, agricultural machinery, military weapons, petroleum machinery, port machinery, printing and packaging machinery, fitness equipment, elevator manufacturing, rail transit, automobile manufacturing, aerospace, kitchenware industry, medical equipment, electrical communications, decoration, environmental protection equipment, sheet metal Various manufacturing and processing industries such as metal processing.



Mechanical engineering



Aerospace industry



Door and window industry



Chassis cabinet



Kitchenware



Car manufacturer



Elevator industry



medical instruments



Appliance industry