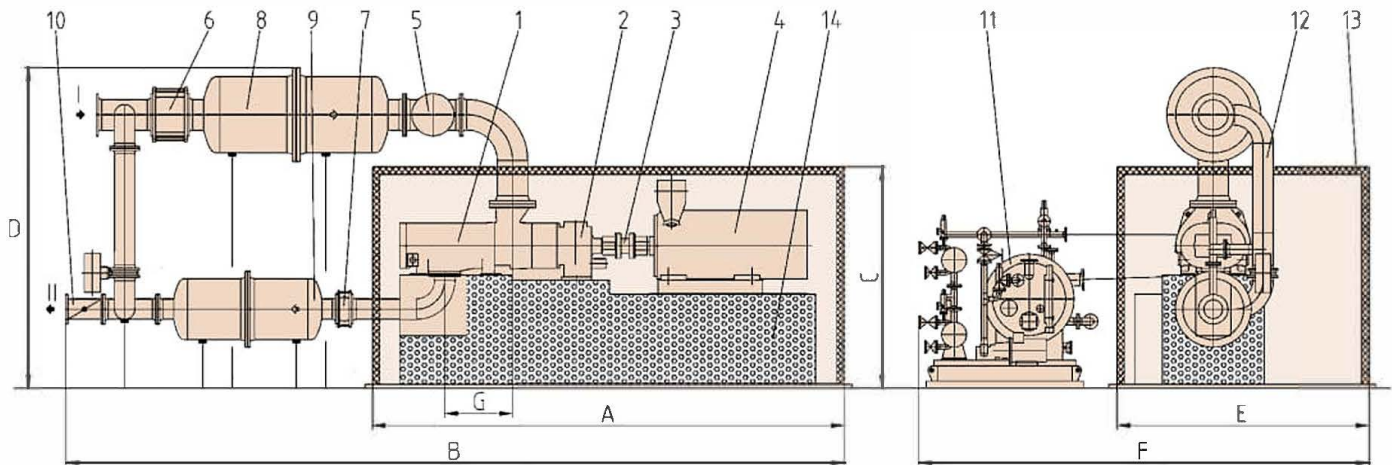




## Dimensions and connection dimensions – single-stage unit (example)



- |                           |                         |               |
|---------------------------|-------------------------|---------------|
| 1. Blower VRa 537 L       | 9. discharge silencer   | I gas inlet   |
| 2. gearbox                | 10. non-return valve    | II gas outlet |
| 3. coupling               | 11. oil unit            |               |
| 4. drive motor            | 12. bypass              |               |
| 5. starting strainer      | 13. acoustic hood       |               |
| 6. lateral compensator SS | 14. concrete foundation |               |
| 7. lateral compensator DS | 15. base frame          |               |
| 8. intake silencer        |                         |               |

installation on  
sectional steel frame

Indication and dimensions not binding!

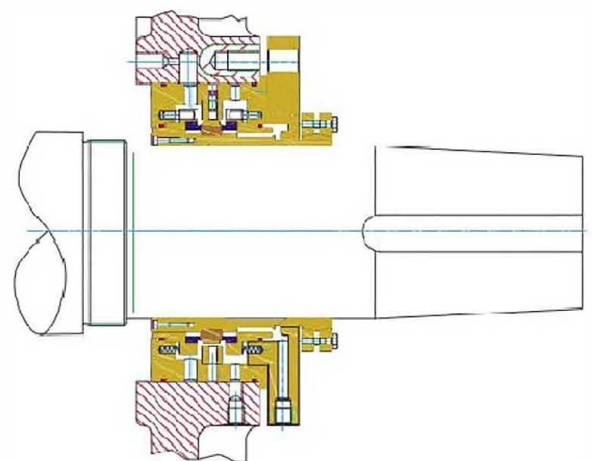
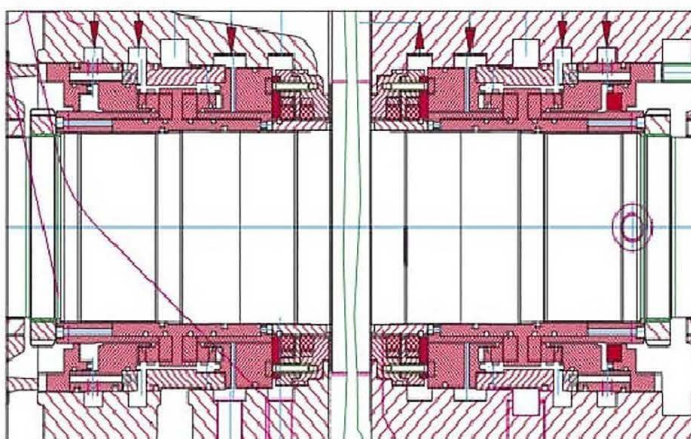
Verdichter Typ	A	B	C	D	E	F	G	DN SS	DN DS	Gewicht [kg]
VRa 136 S	4400	6800	2600	3300	2500	4800	231	150	100	4000
VRa 137 L	4500	7000	2600	3300	2500	4800	336	150	100	4500
VRa 236 S	4700	7200	2800	3300	2800	5200	248	200	150	5000
VRa 336 S	4900	7500	3100	4000	3000	5800	310	250	150	6000
VRa 337 L	5100	7700	3100	4000	3000	5800	497	250	150	7500
VRa 436 S	5600	9800	3600	4200	3400	6200	430	600	400	10000
VRa 437 L	5800	10000	3600	4200	3400	6200	642	600	400	11500
VRa 536 S	6000	10200	3800	4400	4400	6800	635	400	250	16000
VRa 537 L	6300	10500	3800	4400	4400	6800	905	400	250	18500
VRa 736 S	7400	13600	4400	5200	5000	7000	830	600	400	26000
VRa 736 L	7800	14000	4400	5200	5000	7000	1236	600	400	27500
VRa 836 L	8400	16000	4800	6000	4000	7500	1352	800	500	42000
VRa 936 L	10000	18000	5200	7000	5300	8400	1660	900	600	55000
VRa 1037 L	12000	22000	6500	8000	7300	11000	2346	1400	1200	75000

multi-stage upon request!

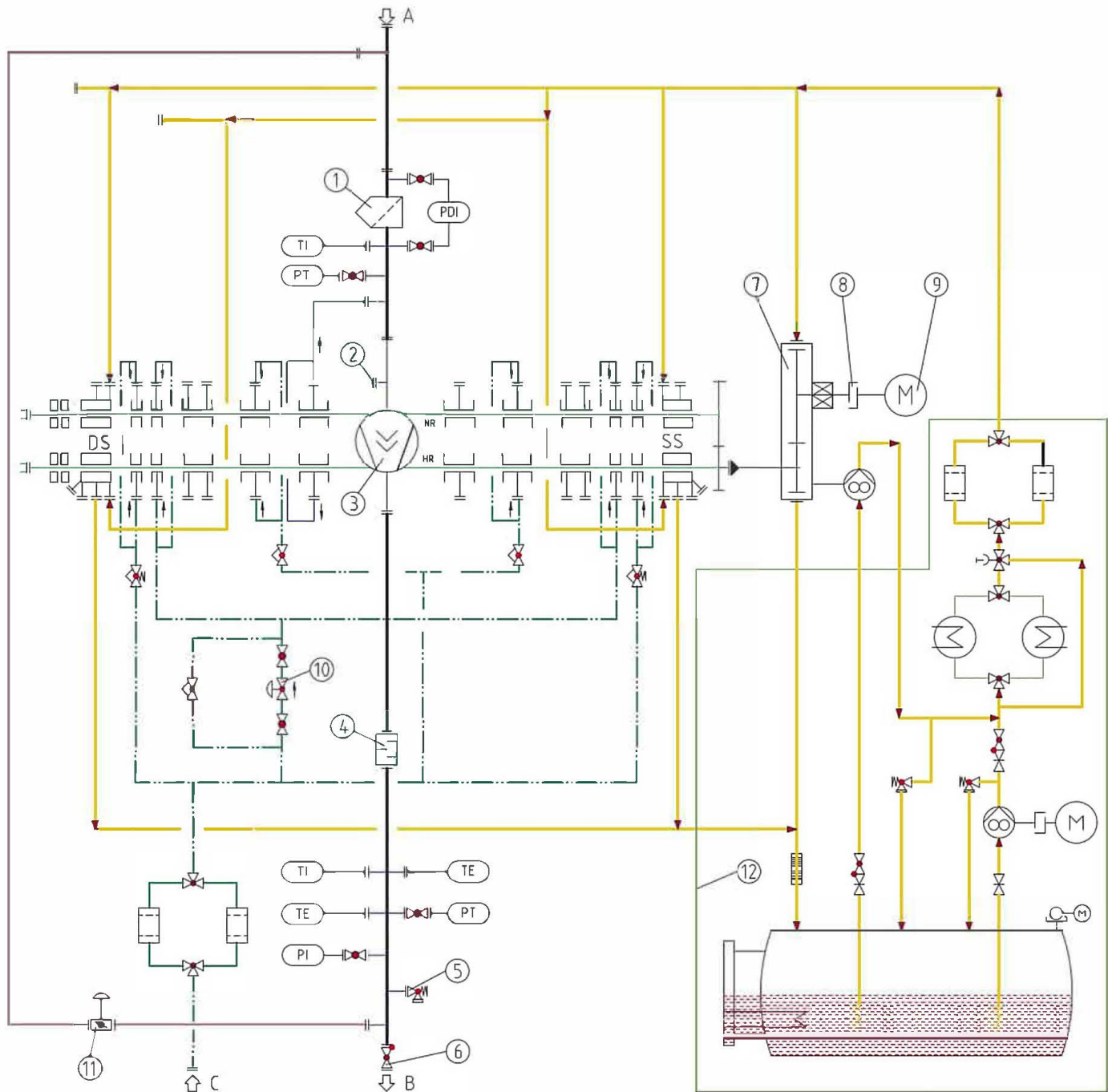
**Performance data – single-stage design**

Blower size type	volume flow [m <sup>3</sup> /h]	overpressure up to p <sub>e</sub> bar [approx. value]	power consumption up to kW [approx. value]
VRa 136 S	550 - 1100	3,5	110
VRa 137 L	950 - 2200	3,5	190
VRa 236 S	800 - 1900	3,5	170
VRa 336 S	1400 - 3200	3,5	290
VRa 337 L	2500 - 6000	3,5	500
VRa 436 S	2150 - 5200	3,5	400
VRa 437 L	3800 - 9000	3,5	770
VRa 536 S	3500 - 8800	3,5	920
VRa 537 L	6150 - 15600	3,5	1300
VRa 736 S	8500 - 21000	3,5	1700
VRa 736 L	14000 - 36000	3,5	2700
VRa 836 L	18900 - 49000	3,5	3600
VRa 936 L	29500 - 75000	3,5	5600
VRa 1037 L	46000 - 120000	3,5	8500

The above data are to be regarded as being a basis of valuation for the compression of all industrial gases.  
 Intake conditions: p<sub>1</sub> = 1 bar; t<sub>1</sub> = 20 °C  
 Performance data for higher compression final pressures resp. vacuum pressures can be requested for.



## Flow scheme VRa – D4 (double-acting mechanical seals, gas-, oil- or water-sealed)



1. starting strainer

2. water injection

3. Blower

4. discharge silencer

5. safety relief valve

6. non-return valve

7. gearbox

8. coupling

9. drive motor

10. seal gas controller

11. bypass valve

12. oil unit

A gas inlet

B gas outlet

C seal gas connection



## Aerzener Maschinenfabrik GmbH

Reherweg 28 · 31855 Aerzen / Germany – P.O. Box 1163 · 31849 Aerzen / Germany  
Phone + 49 51 54 / 8 10 · Fax + 49 51 54 / 8 11 91