

smar

Pressure Sensor Model: D1

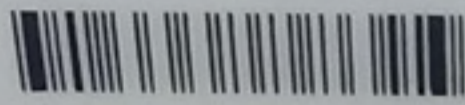
Range : 0.5 To 20 inH2O

Rating : 1150 PSI

Fill : SILICONE OIL

Material : 316L SST

Serial No. : U382233

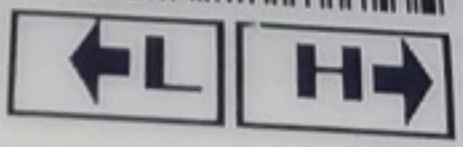
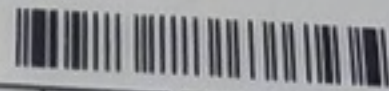




1 - Inox/Silicone - 20



Smar
 Pressure Sensor Model: M1
 Range . . . -20 To 20 inH2O
 MWP 1200 PSI (80 BAR)
 Fill SILICONE OIL
 Material . . . 316L SST
 Serial No. . . U595640



Assembly Date
 09/03/2017



SN. U595640



S.N. L547020



smar

Pressure Sensor Model: M4

Range .: -14,7 To 360 PSI

MWP.....: 2000 PSI (138 BAR)

Fill: SILICONE OIL

Diaph./Conection: HASTELLOY C276/316 SS

Serial No.: L547020



Assembly Date
28/01/2013



Assembly Date
28/01/2013

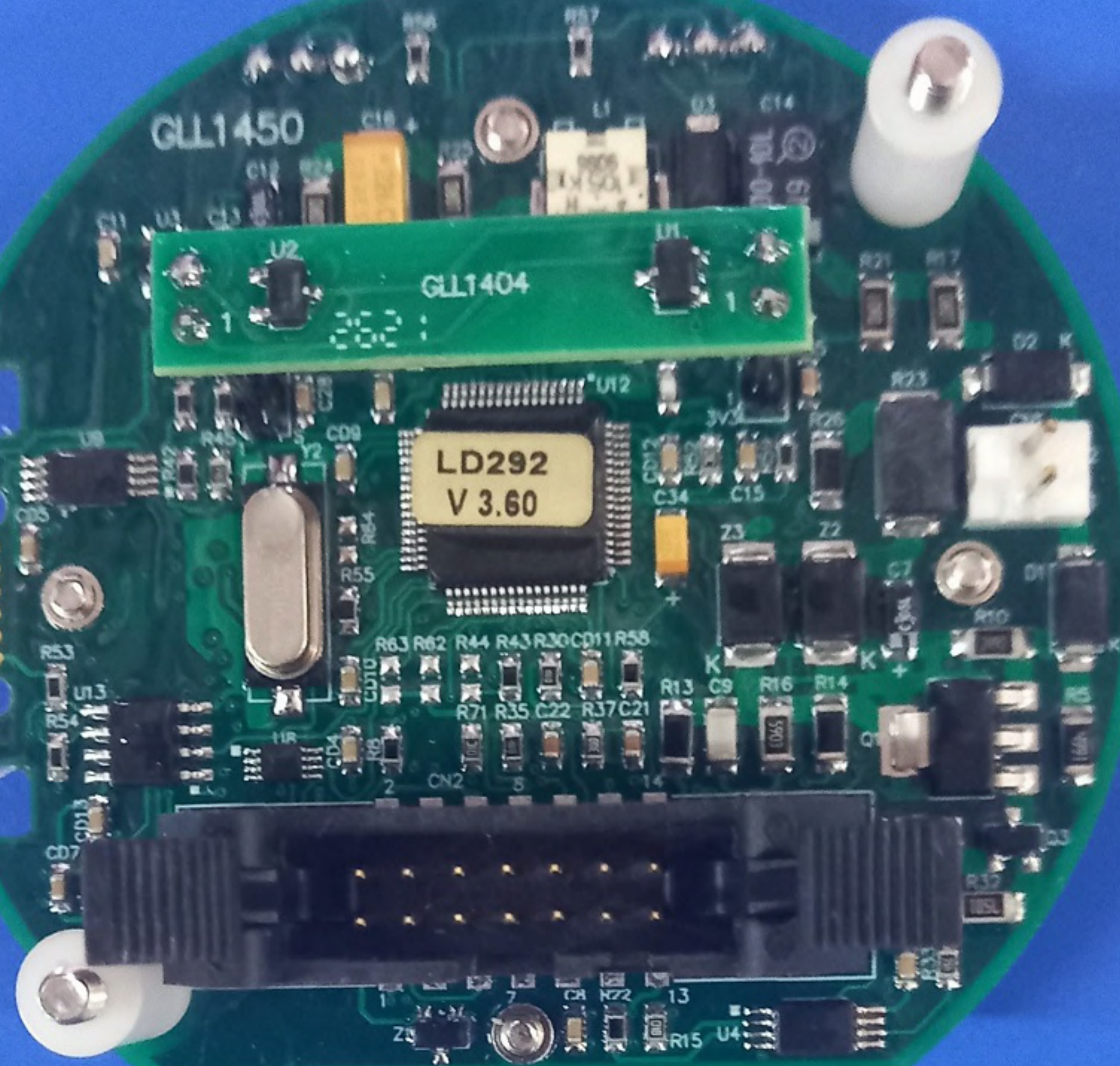


GLL1450

GLL1404

LD292
V 3.60

000000

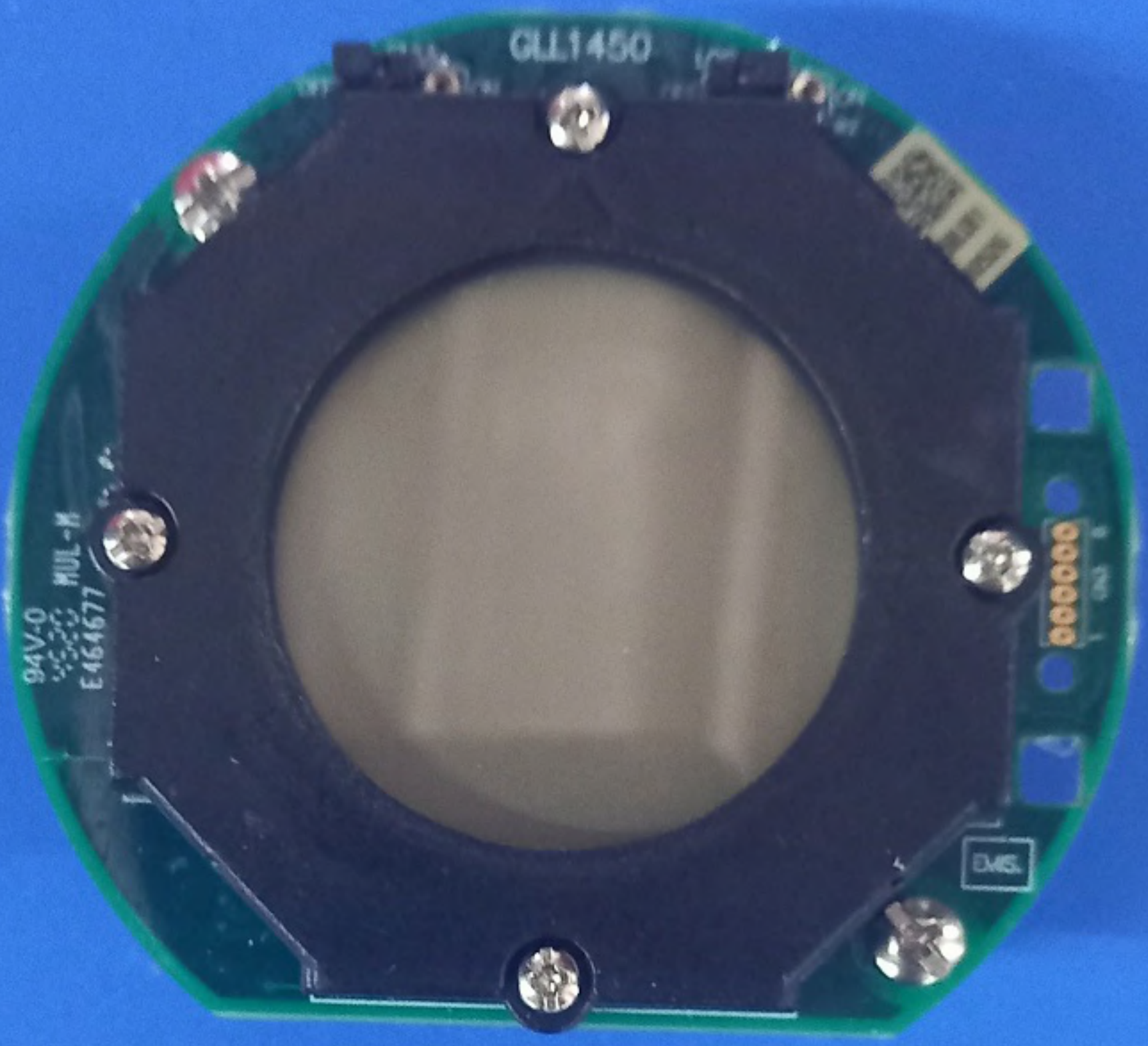


GLL1450

94V-0
MUL-M
E464677

DMS

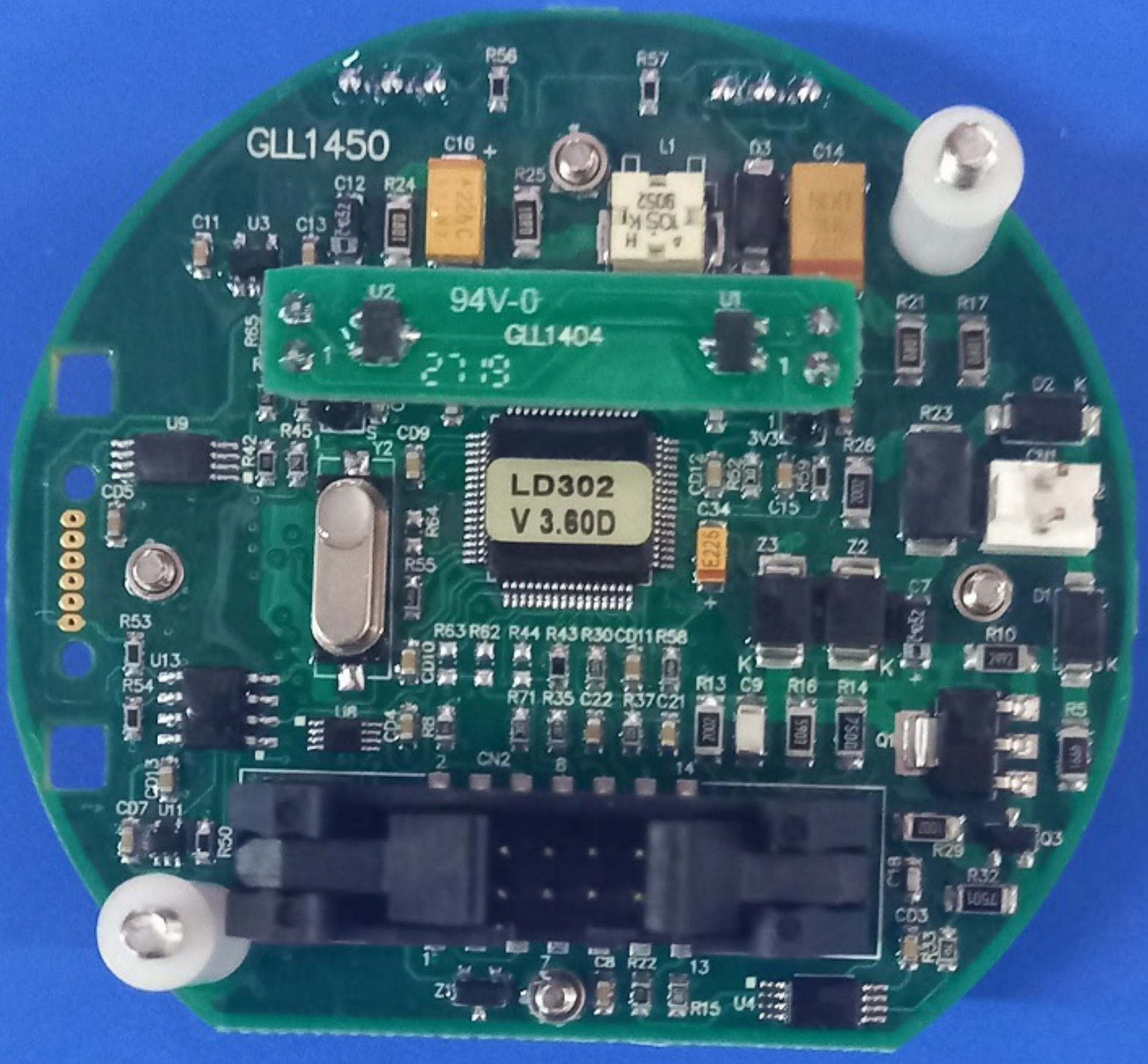
000000

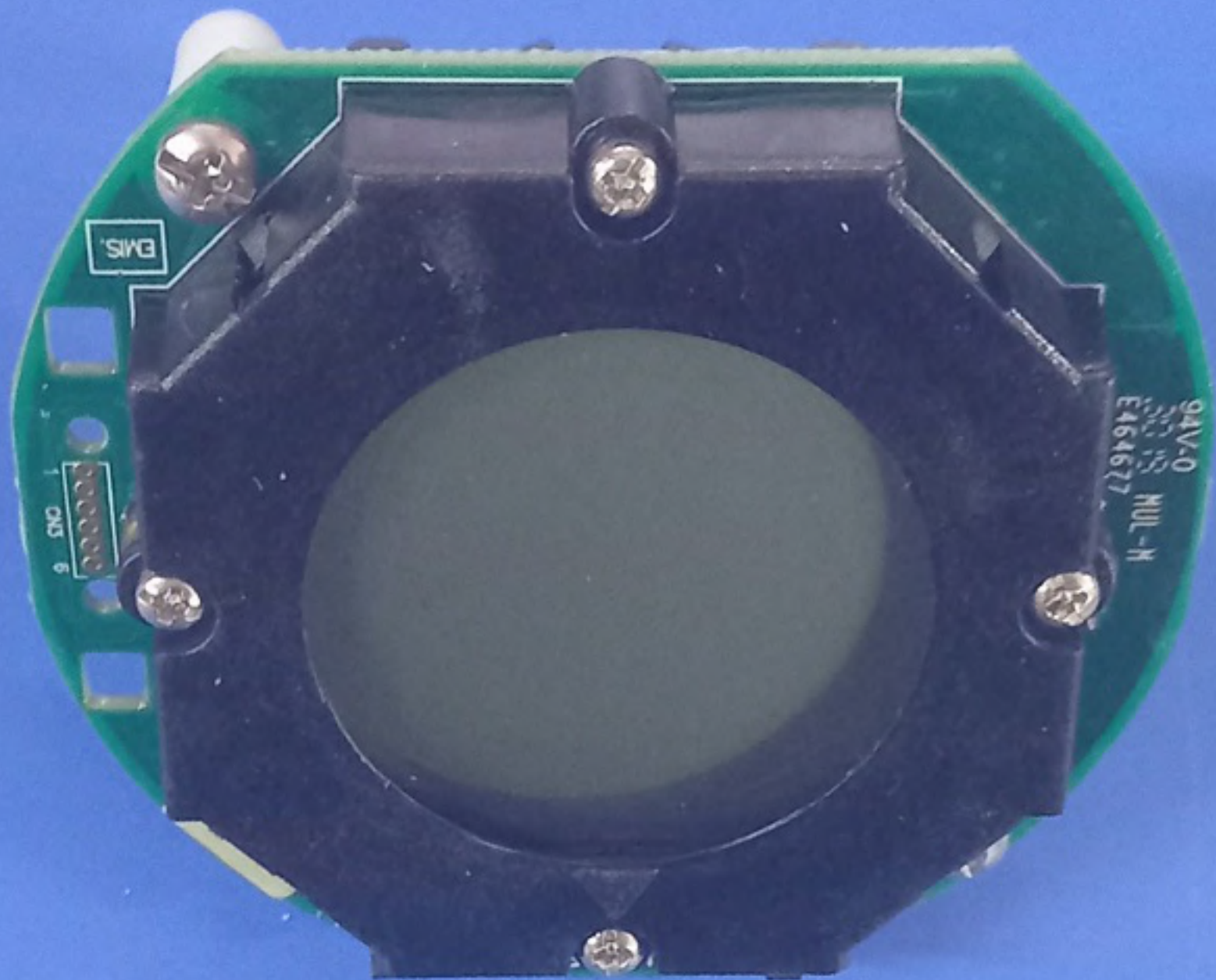


GLL1450

94V-0
GLL1404
219

LD302
V 3.60D





SIM3

1
DMS
5

94V-0
E164677
MUL-N