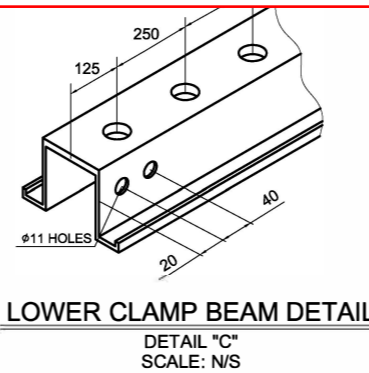
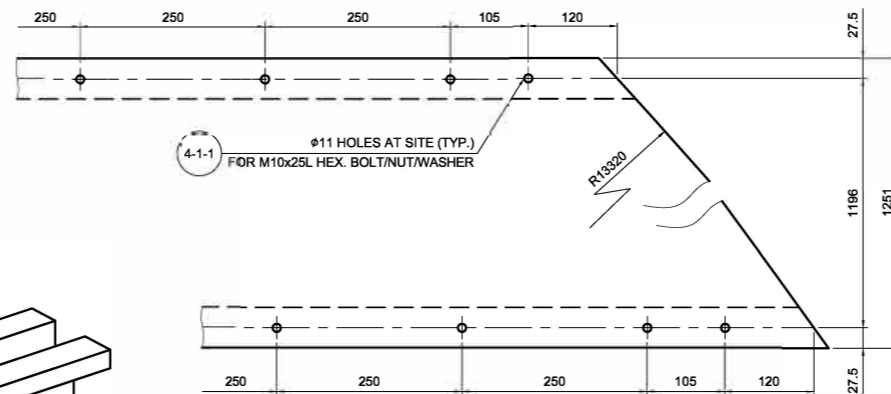


DECK SKIN SHEET & CLAMP BEAM VIEW
SCALE: N/S

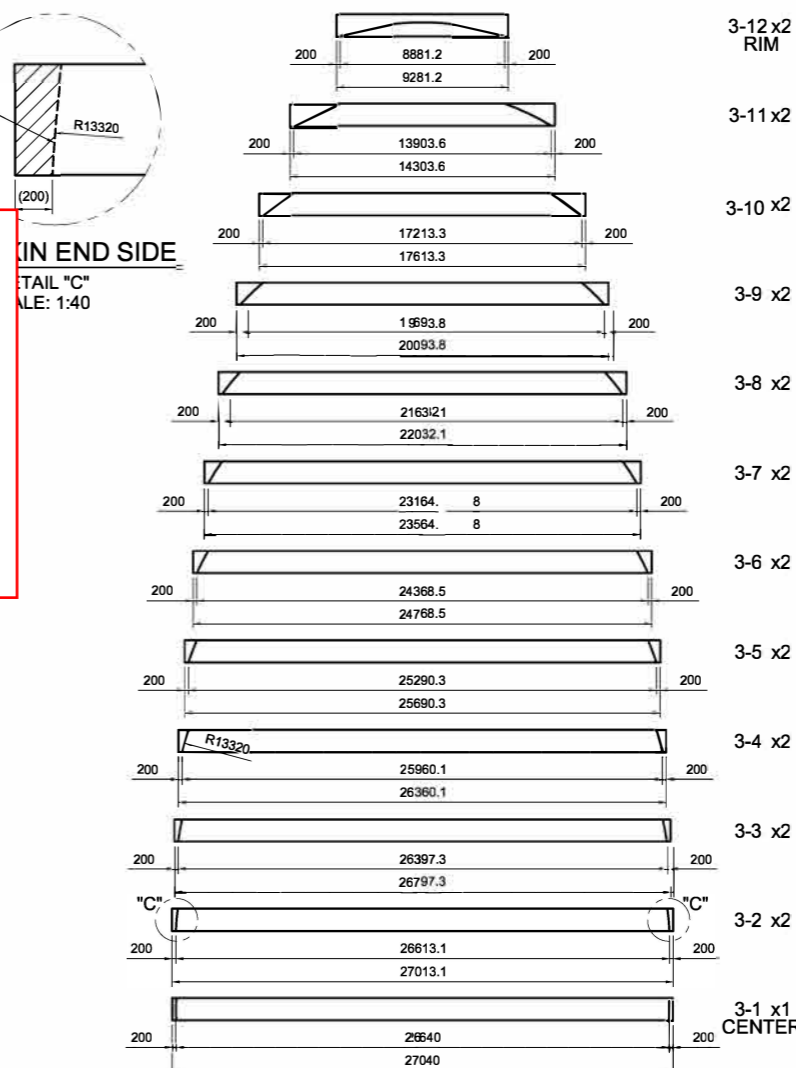
1-For all detail, dimension, part list, and etc TASHA is responsible.
2-Consistency between Vendor's documents (nozzle orientation, detail drawings, and etc) is Vendor's responsibility
3- We approve this document before finalizing NOZZLE ORIENTATION DRAWING, if IN NEXT REVISION OF NOZZLE ORIENTATION DRAWING, THERE IS ANY CHANGES THAT HAVE EFFECT ON THIS DOCUMENT, THIS DOCUMENT SHALL BE REVISED AND ISSUED.



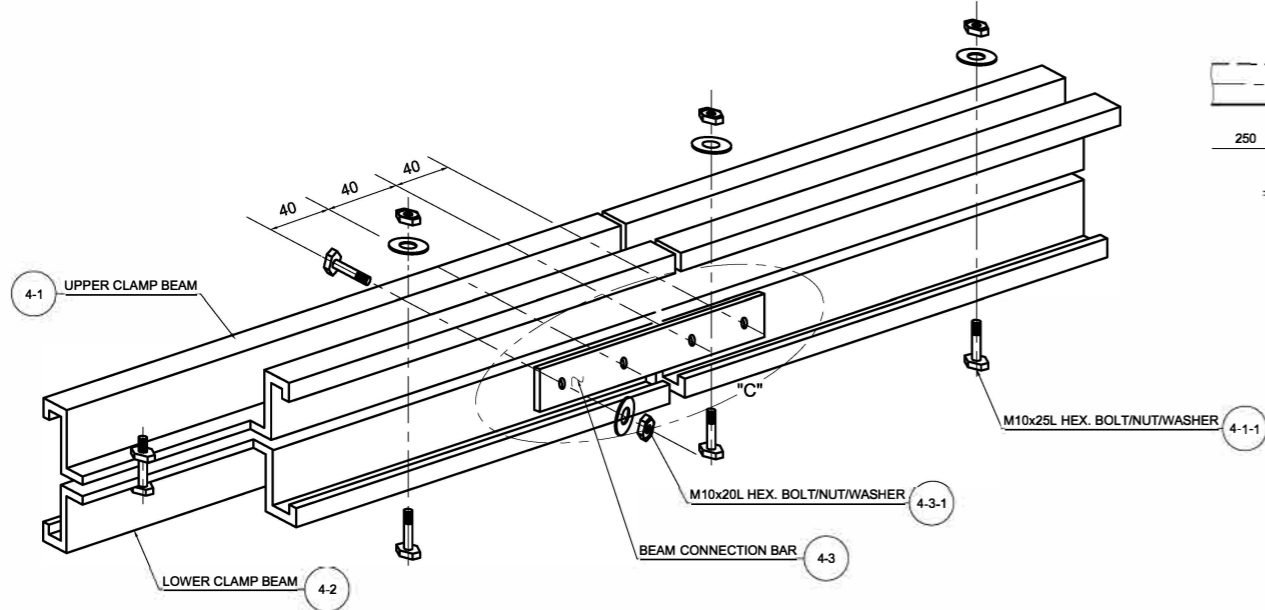
LOWER CLAMP BEAM DETAIL
DETAIL "C"
SCALE: N/S



DECK SKIN SHEET BOLTING PLAN
DETAIL "B"
SCALE: 1:5



DECK SKIN CUTTING PLAN
SCALE: 1:200



CLAMP BEAM JOINT DETAIL
DETAIL "A"
SCALE: N/S

BILL OF MATERIAL FOR ONE TANK						
No.	DESCRIPTION	MATERIAL	SIZE	QTY	WT(kg)	REMARK
3	DECK SKIN SHEET ACCY					
-1	DECK SKIN SHEET	A240-304L EQ. STS304L	W1251x0.5bx26640L	1 ^{SHFT}	132.1	
-2	DECK SKIN SHEET	A240-304L EQ. STS304L	W1251x0.5bx26613L	2 ^{SHFT}	264.0	
-3	DECK SKIN SHEET	A240-304L EQ. STS304L	W1251x0.5bx26397L	2 ^{SHFT}	261.8	
-4	DECK SKIN SHEET	A240-304L EQ. STS304L	W1251x0.5bx25960L	2 ^{SHFT}	257.5	
-5	DECK SKIN SHEET	A240-304L EQ. STS304L	W1251x0.5bx25290L	2 ^{SHFT}	250.8	
-6	DECK SKIN SHEET	A240-304L EQ. STS304L	W1251x0.5bx24369L	2 ^{SHFT}	241.7	
-7	DECK SKIN SHEET	A240-304L EQ. STS304L	W1251x0.5bx23165L	2 ^{SHFT}	229.8	
-8	DECK SKIN SHEET	A240-304L EQ. STS304L	W1251x0.5bx21632L	2 ^{SHFT}	214.6	
-9	DECK SKIN SHEET	A240-304L EQ. STS304L	W1251x0.5bx19694L	2 ^{SHFT}	195.3	
-10	DECK SKIN SHEET	A240-304L EQ. STS304L	W1251x0.5bx17213L	2 ^{SHFT}	170.7	
-11	DECK SKIN SHEET	A240-304L EQ. STS304L	W1251x0.5bx13904L	2 ^{SHFT}	137.9	
-12	DECK SKIN SHEET	A240-304L EQ. STS304L	W1251x0.5bx8881L	2 ^{SHFT}	88.1	
-13	DECK SKIN SPLICE BAR	A240-304L EQ. STS304L	500x50x1.2t	3 EA	0.7	
-13-1	HEX.BOLT/NUT/WASHER	A193-B8 EQ.STS304	M6X15L	27 SET	0.1	
4	CLAMP BEAM ACCY					
-1	UPPER CLAMP BEAM	A240-304L EQ. STS304L	1.2bx58x37x3000L	160 EA	644.8	NOTE 2
-1-1	HEX.BOLT/NUT/WASHER	A193-B8 EQ.STS304	M10x25L	1920 SET	57.6	
-2	LOWER CLAMP BEAM	A240-304L EQ. STS304L	1.2bx58x37x3000L	160 EA	644.8	NOTE 2
-3	BEAM CONNECTION BAR	A240-304 EQ. STS304	3.0bx160x30	284 EA	32.4	
-3-1	HEX.BOLT/NUT/WASHER	A193-B8 EQ.STS304	M10x20L	1136 SET	26.1	
					T.W =	3850.8 kg

GENERAL NOTES

- ALL DIMENSION ARE IN MILLIMETER EXCEPT AS SHOWN.
- CLAMP BEAM SHOULD BE CUT AND ARRANGE AT SITE ACCORDING TO CLAMP BEAM LENGTH TABLE.
- THERE ARE TWO STORAGE TANK TK-5002(1, AND 2)

REFERENCE DOCUMENT :
1- GENERAL ASSEMBLY FOR FLOATING ROOF :
1264-23102-TSH-DR-EME-23133
2- NOZZLE ORIENTATION DRAWING :
1264-23102-TSH-DR-EME-23048
3- FLOATING ROOF CALCULATION BOOK :
1264-23102-TSH-CN-EME-23102

Project Name: 5,000 MTPD Badr-e-Shargh Methanol Plant
Project No.: 1264

1	No comments.
2	Comments as marked, proceed.
3	Comments as marked, revise & resubmit.
4	For Information, Not reviewed.
5	Reject

Signature: **MZS** 11.Apr.2022

REV	DATE	DESCRIPTION	PREP. BY	CHKD. BY	APPD. BY
A6	18.03.22	ISSUE FOR APPROVAL	K. H. KIM	K. H. KIM	Y. K. CHD
A5	12.12.21	ISSUE FOR APPROVAL	K. H. KIM	K. H. KIM	Y. K. CHD
A4	13.12.21	ISSUE FOR APPROVAL	K. H. KIM	K. H. KIM	Y. K. CHD
A3	02.11.21	ISSUE FOR APPROVAL	K. H. KIM	K. H. KIM	Y. K. CHD
A2	02.11.21	ISSUE FOR APPROVAL	K. H. KIM	K. H. KIM	Y. K. CHD
A1	06.10.21	ISSUE FOR APPROVAL	K. H. KIM	K. H. KIM	Y. K. CHD

Badr-e-Shargh Petrochemical Complex (BSPC)

Project: 5,000 MTPD Badr-e-Shargh Methanol Plant

Contractor: **namvaran**

Vendor: **TASHA KOREA FLOAT**

Doc. Title: **DECK PLATE ARRANGEMENT AND DETAIL TK-5002-1/2**

Vendor Doc. No.: 1264-23102-TSH-DR-EME-23056

NO CONSTRUCTION PERMITTED UNLESS DWG. APPROVED

DOCUMENT NUMBER :					
PROJECT NO.	NR NUMBER	VENDOR ABBR.	TYPE OF DOC.	DOC. GROUP	SEQ. NO.
1264	23102	TSH	DR	EME	23056
SCALE: AS SHOWN SHEET: 1 OF 1 REV. A6					