

中国智造
INTELLIGENT MANUFACTURING

工匠品质
CRAFTSMAN QUALITY



新青罐机
SHANTO
CANNERY MACHINERY



新青罐机
SHANTO
CANNERY MACHINERY

地址: 广东省汕头市潮阳路金园工业区七片区2号
Add: 7th Section, Jinyuan Industrial Area, 515064, Shantou, China
电话 Tel: +86-654-8820.8923
电子邮箱 E-mail: neosheh@canning-machinery.cn



中文版微信公众号



NEW DODO WeChat



700 罐/分钟 (最高) 700 cans/min(max)
综合制罐设备供应商
PROFESSIONAL MANUFACTURER OF TIN CAN MAKING MACHINES

汕头市新青罐机有限公司
SHANTOU BODAO TRADING CO.,LTD

Company INTRODUCTION

企业介绍

汕头市新青罐机有限公司是一家集研发、设计、生产和销售于一体的知名金属罐体设备供应商，行业内少数具备实力提供金属罐体设备及检测方案的领导品牌，设备涵盖全自动电阻焊焊接生产线、全自动在线智能检测装置及机组，为全球客户提供三片罐、二片罐、异形罐专业设备和服务。

公司在设备设计研发、技术工艺等方面拥有多项核心技术，主要产品NEW DODO®系列罐身焊接机，生产效率30罐/分~700罐/分，高频电磁烘干机。在线智能检测装置均被认定为广东省高新技术产品，在食品罐、奶粉罐、气雾罐、化工罐、饮料罐及特殊应用等领域拥有广泛的应用。

公司坚持追求前瞻性的产品开发，竞争性的产品设计，以客户为中心，研发生产提供成套生产线的完美解决方案，承接“交钥匙”工程，同时是高新技术企业、省专精特新中小企业、省工程技术研究中心，产品被评为“省数控一代机械产品创新应用示范工程”，公司“金属罐体生产装备智能化关键技术及产业化”项目获得中国轻工联合会科技进步一等奖。公司将持续为客户提供高附加值产品和服务，推动金属罐体装备行业的发展。

公司自成立以来一贯坚持“业于诚信，客户利益第一”的宗旨，坚持不懈地开发具有前瞻性和高新技术的新产品，以满足国内外客户日新月异的需求。

汕头市新青罐机有限公司热情欢迎海内外外商前来洽谈和定制。

SHANTOU BODAO TRADING CO.,LTD a well-known tin can making machines manufacturer which integrates research and development, design, production and sales. We are one of the few leading brands in the industry with the strength to provide tin can making machine and testing solutions. Our products cover automatic canbody welding production line, automatic online intelligent tester and other equipments to provide professional equipment and services for 3-piece cans, 2-piece cans and irregular cans to global customers.

Our company has numbers of core patents in equipment design and development, technology and other aspects. Main products NEW DODO automatic canbody welder with speed at 30-700 cpm, high frequency induction drying oven and online intelligent testing equipment are recognized as Guangdong high-tech products. These are widely used in food cans, milk powder cans, aerosol cans, chemical cans, beverage cans and special applications.

We adheres to the pursuit of forward-looking product development, competitive product design, customer-centric, R & D and production to provide perfect solutions for complete production lines, to undertake the "turnkey" project as well as a High-tech Enterprise, Provincial Professional, Excelsior, Unique and Innovative Small and Medium-sized Enterprises, Provincial Engineering Technology Research Center. Our products are awarded as the "Provincial CNC Generation Mechanical Product Innovation Application Demonstration Project". And the project of "Key Technology and Industrialization of Intelligent Metal Can Production Equipment" won the first prize for progress in Science and Technology Progress of China Light Industry Federation. The company will continue to provide customers with high value-added products and services to promote the development of cannery machinery industry.

Our company consistently keeps "Good business by good faith, customers' profits come first" as our aim, persist in pursuing the advanced products developing, competitive products designing to develop the high technology and high quality products to meet the updating requirements of customers.

You're warmly welcome to visit our company and we will be your trust business partner.



国内客户 Domestic



国外客户 Overseas



汕头市新青罐机有限公司
SHANTOU BODAO TRADING CO.,LTD

三片罐生产设备
THREE PICES CANS PRODUCTION EQUIPMENT



汕头市星联数控设备有限公司
SHANTOU THINK-LINK CNC MACHINERY CO.,LTD.

二片罐生产线 异形罐盖生产线
TWO PICES CANS PRODUCTION LINE (IRREGULAR CAN ENDS PRODUCTION LINE)

COMPANY ENVIRONMENT

办公环境



总经理室 / GENERAL MANAGER OFFICE



会议室 / CONFERENCE ROOM



设计部 / DESIGN DEPARTMENT



国外销售部 / FOREIGN SALES DEPARTMENT



国内销售部 / DOMESTIC SALES DEPARTMENT



焊机装配车间 / WELDER ASSEMBLY WORKSHOP



二片罐设备车间 / TWO-PIECE CANS EQUIPMENT WORKSHOP



检漏机装配车间 / LEAK TESTER ASSEMBLY WORKSHOP



粉末机装配车间 / POWDER COATING MACHINE ASSEMBLY SHOP



机加工车间 / MACHINING WORKSHOP



烘干机装配车间 / INDUCTION DRYING OVEN ASSEMBLY WORKSHOP

CUSTOMERS

客户分布图



资质荣誉

ENTERPRISE HONOR

- 荣获“中国轻工业联合会科技进步奖一等奖”、“国家高新技术企业”、“省工程中心”等奖项；
- 获得了6项国家发明专利、25项实用新型专利，取得了欧盟CE认证；
- Awarded as “the First Prize for Progress in Science & Technology of China Light Industry Union”, National High-Tech Enterprise, Provincial Engineering Center, etc.
- 6 National Invention Patents, 25 Patents for Utility Models, CE Certificate





三片罐生产工序

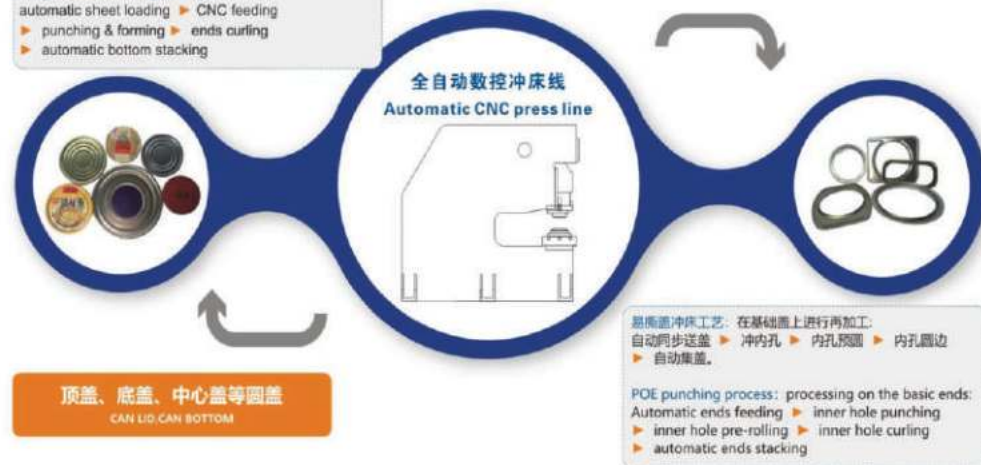
MAKING PROCESS FOR 3-PIECE CANS



异形基础盖冲压工艺:
自动供料 ▶ 数控送料 ▶ 盖体冲剪成形 ▶ 盖体翻边 ▶ 自动集盖

Irregular ends making process:
automatic sheet loading ▶ CNC feeding ▶ punching & forming ▶ ends curling ▶ automatic bottom stacking

各种异形盖及盖环
VARIOUS SIZE OF IRREGULAR CAN ENDS & RINGS

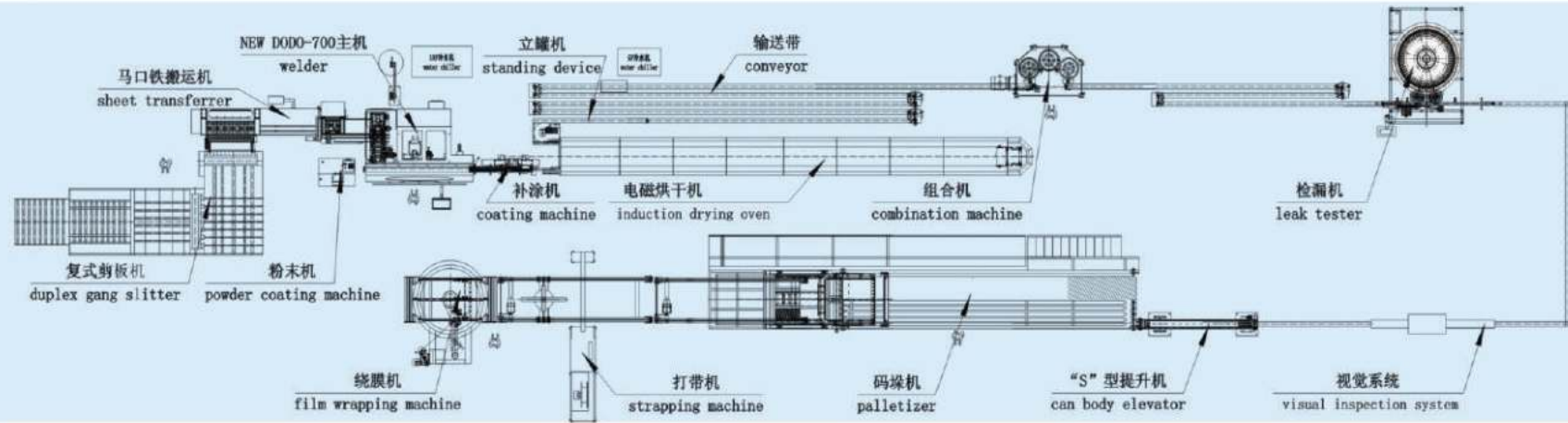


二片罐生产工序

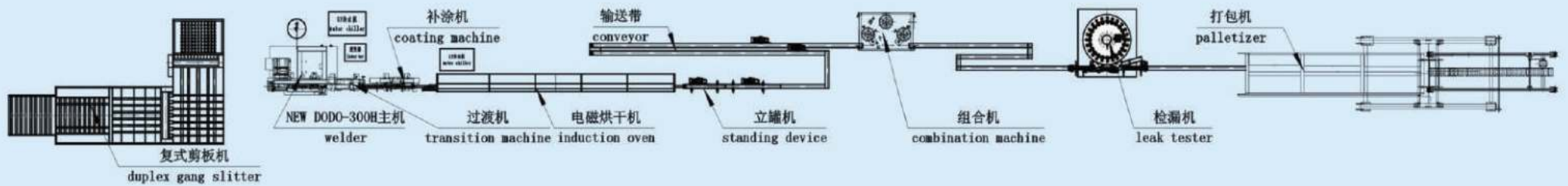
MAKING PROCESS FOR 2-PIECE CANS



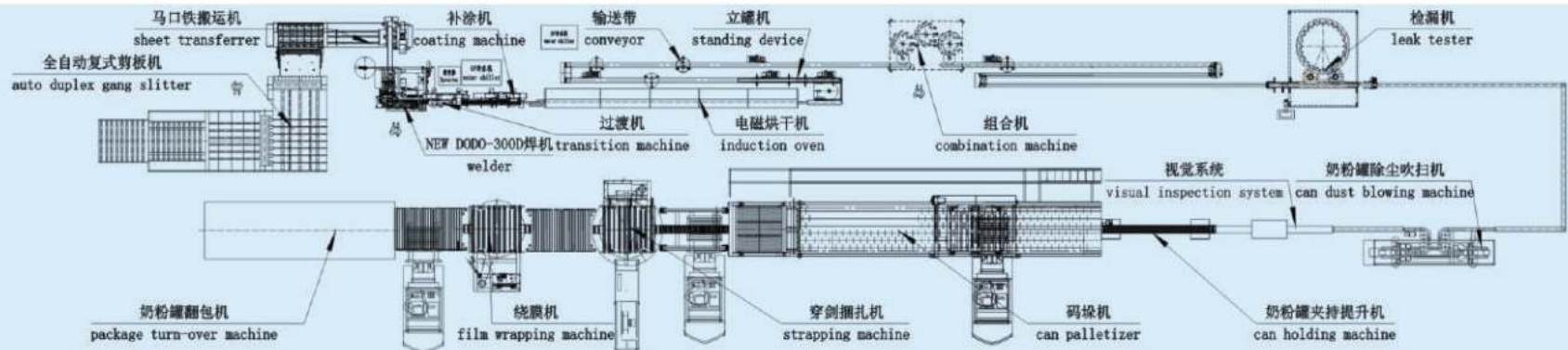
食品罐、饮料罐生产线流程图
FOOD CANS AND BEVERAGE CANS PRODUCTION LINE LAYOUT



气雾罐生产线流程图
AEROSOL CANS PRODUCTION LINE LAYOUT



奶粉罐生产线流程图
MILK POWDER CANS PRODUCTION LINE LAYOUT



NEW DODO-700 智能电阻焊罐身焊接机 NEW DODO-700 INTELLIGENT CAN BODY WELDING MACHINE



01
二级撑铁装置
two steps of flexing device

02
四伺服送罐系统
4 servo system of can feeding

03
陶瓷指铁轮
ceramic guiding roller

700 罐/分钟 (最高)
700 cans/min(max)

HOT

主要特点

- 1.先进的设计理念, 实现金属三片罐罐身撑铁、成型、焊接的高速生产工序;
- 2.人机界面、PLC系统、伺服系统等构成稳定智能的电控系统;
- 3.独创电子式静态可调式变频焊接电源系统, 即节能又稳定;
- 4.独特成型撑铁装置, 具有优越撑铁、成型和抗划伤性能, 适应铁质范围广;
- 5.双指侧向二级四伺服送罐系统, 确保高速送罐稳定静音的效果;
- 6.关键零部件采用超强耐磨陶瓷和优质合金钢等材料;
- 7.可增配无汞焊接装置、远程控制系统、焊缝检测系统;

MAIN FEATURES

1. Advanced design concept, realizing the high speed production process of flexing, rounding and welding of 3-piece cans.
2. Stable and intelligent electrical control system: man-computer interface device, PLC system, servo system
3. Unique adjustable electronic static inverter power supply (SPWM), which is energy saving and stable.
4. Special rounding and flexing device, with excellent sheet flexing, round forming and anti-scratching. And suitable for wide range quality of tinplate.
5. Two steps and 4 servo can feeding system, to make a stable and quiet can feeding with high speed.
6. Ceramic and carbide material with good quality and super abrasive resistance for the key spare parts.
7. Non-mercury welding device, remote control system, welding seam detecting system are available to be equipped.

主要性能参数 TECHNICAL SPECIFICATION

焊接速度/ Welding speed	80m/min (max)	
生产速度/ Production speed	700cans/min (Max)	
罐身内径/ Can inner diameter	Φ52 ~ Φ73mm	Φ73 ~ Φ99mm
罐身外高/ Can height	50 ~ 140mm	
焊点间距/ Welding points distance	0.5 ~ 1.1mm	
搭接宽度/ Overlap	0.20 ~ 0.4mm	
材料厚度/ Sheet thickness	0.14 ~ 0.28mm	
硬度/ Temper	T2.5 ~ DR8	
铜线直径/ Copper wire	Φ1.24 ~ 1.38mm	
输入电源/ Power supply	三相电压/Three phase Voltage: 380V 频率/ Frequency: 50Hz 总功率/ Power consumption: 50kw	
焊接频率/ Welding frequency	250-850Hz	
冷却水/ Cooling water	>0.4MPa, ≤20°C, 60L/min	
压缩空气/ Compressed air	>1000L/min, >0.6MPa	

NEWDODO-600智能电阻焊罐身焊接机 NEW DODO-600 INTELLIGENT CAN BODY WELDING MACHINE



二级撑铁装置
two steps of flexing device

高效稳定焊接系统
efficient and stable

双伺服送罐系统
2 servo system of can feeding

600 罐/分钟 (最高)
600 cans/min(max)

主要特点

- 1.先进的设计理念, 实现金属三片罐罐身撑铁、成型、焊接的高速生产工序;
- 2.人机界面、PLC系统、伺服系统等构成稳定智能的电控系统;
- 3.独创电子式静态可调式变频焊接电源系统, 即节能又稳定;
- 4.独特成型撑铁装置, 具有优越撑铁、成型和抗划伤性能, 适应铁质范围广;
- 5.双指侧向双伺服送罐系统, 确保高速送罐稳定静音的效果;
- 6.关键零部件采用超强耐磨陶瓷和优质合金钢等材料;
- 7.可增配无汞焊接装置、远程控制系统、焊缝检测系统;

MAIN FEATURES

1. Advanced design concept, realizing the high speed production process of flexing, rounding and welding of 3-piece cans.
2. Stable and intelligent electrical control system: man-computer interface device, PLC system, servo system
3. Unique adjustable electronic static inverter power supply (SPWM), which is energy saving and stable.
4. Special rounding and flexing device, with excellent sheet flexing, round forming and anti-scratching. And suitable for wide range quality of tinplate.
5. 2 servo can feeding system, to make a stable and quiet can feeding with high speed.
6. Ceramic and carbide material with good quality and super abrasive resistance for the key spare parts.
7. Non-mercury welding device, remote control system, welding seam detecting system are available to be equipped.

主要性能参数 TECHNICAL SPECIFICATION

焊接速度/ Welding speed	70m/min (max)	
生产速度/ Production speed	600cans/min (Max)	
罐身内径/ Can inner diameter	Φ52 ~ Φ99mm	
罐身外高/ Can height	50 ~ 140mm	
焊点间距/ Welding points distance	0.5 ~ 0.9mm	
搭接宽度/ Overlap	0.20 ~ 0.4mm	
材料厚度/ Sheet thickness	0.14 ~ 0.28mm	
硬度/ Temper	T2.5 ~ DR8	
铜线直径/ Copper wire	Φ1.24 ~ 1.38mm	
输入电源/ Power supply	三相电压/Three phase Voltage: 380V 频率/ Frequency: 50Hz 总功率/ Power consumption: 50kw	
焊接频率/ Welding frequency	250-850Hz	
冷却水/ Cooling water	>0.4MPa, ≤20°C, 60L/min	
压缩空气/ Compressed air	>1000L/min, >0.6MPa	

NEW DODO-450 智能电阻焊罐身焊接机 NEW DODO-450 INTELLIGENT CAN BODY WELDING MACHINE



优越探铁成圆效果
Superior sheet flexing and rounding

高效稳定焊接系统
efficient and stable welding system

可带自动划线
scoring unit is available

450罐/分钟 (最高)
450 cans/min(max)

主要特点

- 1.全新的设计理念, 实现金属三片罐身探铁、成圆、焊接的生产工序;
- 2.人机界面、PLC系统、伺服系统等构成稳定智能的电控系统;
- 3.独创电子式静态可调式变频焊接电源系统, 即节能又稳定;
- 4.独特成圆探铁装置, 具有优越探铁、成圆和抗划伤性能, 适应铁质范围广;
- 5.关键零部件采用超强耐磨陶瓷和优质合金钢等材质;
- 6.可搭配自动划线功能, 无汞焊接装置, 远程控制系统, 焊缝检测系统;

MAIN FEATURES

- 1.New design concept, realizing the production processes of flexing, rounding and welding of 3-piece cans.
- 2.Stable and intelligent electrical control system: man-computer interface device, PLC system, servo system
- 3.Unique adjustable electronic static inverter power supply (SPWM), which is energy saving and stable.
- 4.Special rounding and flexing device, with excellent sheet flexing, round forming and anti-scratching. And suitable for wide range of tinplate.
- 5.Ceramic and carbide material with good quality and super abrasive resistance for the key spare parts.
- 6.Non-mercury welding device, remote control system, welding seam detecting system can be equipped.

主要性能参数

TECHNICAL SPECIFICATION

型号	NEW DODO-450
焊接速度/ Welding speed	55m/min (max)
生产速度/ Production speed	450cans/min (Max)
罐身内径/ Can inner diameter	Φ52 ~ Φ99mm
罐身外高/ Can height	50 ~ 160mm
焊点间距/ Welding points distance	0.5 ~ 0.9mm
搭接宽度/ Overlap	0.25 ~ 0.4mm
材料厚度/ Sheet thickness	0.14 ~ 0.30mm
硬度/ Temper	T2.5 ~ DR8
铜线直径/ Copper wire	Φ1.24 ~ 1.38mm
输入电源/ Power supply	三相电压/Three phase Voltage: 380V 频率/ Frequency: 50Hz
总功率/Power consumption	45kw
焊接频率/ Welding frequency	250-850Hz
冷却水/ Cooling water	>0.4MPa, ≤20°C, 50L/min
压缩空气/ Compressed air	>800L/min, >0.6MPa

NEW DODO-400D 全自动电阻焊罐身焊接机 NEW DODO-400D FULLY AUTOMATIC CAN BODY WELDER



高速奶粉罐、大罐焊机
High speed welder for milk powder can and big can

优越探铁成圆效果
Superior sheet flexing and rounding

高效稳定焊接系统
efficient and stable welding system

400罐/分钟 (最高)
400 cans/min(max)

主要特点

- 1.全新的设计理念, 实现金属三片罐身探铁、成圆、焊接的生产工序;
- 2.人机界面、PLC系统、伺服系统等构成稳定智能的电控系统;
- 3.独创电子式静态可调式变频焊接电源系统, 即节能又稳定;
- 4.独特成圆探铁装置, 具有优越探铁、成圆和抗划伤性能, 适应铁质范围广;
- 5.关键零部件采用超强耐磨陶瓷和优质合金钢等材质;
- 6.可增配远程控制系统, 焊缝检测系统;
- 7.送罐台可伸缩适应大小罐径

MAIN FEATURES

1. New design concept, realizing the production processes of flexing, rounding and welding of 3-piece cans.
2. Stable and intelligent electrical control system: man-computer interface device, PLC system, servo system
3. Unique adjustable electronic static inverter power supply (SPWM), which is energy saving and stable.
4. Special rounding and flexing device, with excellent sheet flexing, round forming and anti-scratching. And suitable for wide range of tinplate.
5. Ceramic and carbide material with good quality and super abrasive resistance for the key spare parts.
6. Remote control system, welding seam detecting system can be equipped.
7. cans feeder is flexible for different can diameter

主要性能参数

TECHNICAL SPECIFICATION

焊接速度/ Welding speed	55m/min (max)
生产速度/ Production speed	400cans/min (Max) #202-307: 400cans/min (Max) #401: 300cans/min (Max) #502: 250cans/min (Max) #603: 200cans/min (Max)
罐身内径/ Can inner diameter	Φ52 ~ Φ153mm
罐身外高/ Can height	70 ~ 265mm
焊点间距/ welding points distance	0.5 ~ 0.9mm
搭接宽度/ Overlap	0.25 ~ 0.4mm
材料厚度/ Sheet thickness	0.16 ~ 0.30mm
硬度/Hardness	T2.5 ~ DR8
铜线直径/ Copper wire	Φ1.24 ~ 1.38mm
输入电源/ Power supply	三相电压/Three phase Voltage: 380V 频率/ Frequency: 50Hz
总功率/ Power consumption:	45KW
焊接频率/ Welding frequency	250-550Hz
冷却水/ Cooling water	>0.4MPa, ≤20°C, 50L/min
压缩空气/ Compressed air	>800L/min, >0.6MPa

NEW DODO-500H 智能电阻焊罐身焊接机 NEW DODO-500H INTELLIGENT CAN BODY WELDING MACHINE



主要特点

- 1.先进的设计理念，实现三片气雾罐身揉铁、成圆、焊接的高速生产工序；
- 2.人机界面，PLC系统，伺服系统等构成稳定智能的电控系统；
- 3.独创电子式静态可调式变频焊接电源系统，即节能又稳定；
- 4.独特成圆揉铁装置，具有优越揉铁、成圆和抗划伤性能，适应铁质范围广；
- 5.关键零部件采用超强耐磨陶瓷和优质合金钢等材质；
- 6.可增配远程控制系统，焊缝检测系统；

MAIN FEATURES

1. New design concept, realizing the production processes of flexing, rounding and welding of 3-piece cans.
2. Stable and intelligent electrical control system: man-computer interface device, PLC system, servo system.
3. Unique adjustable electronic static inverter power supply (SPWM), which is energy saving and stable.
4. Special rounding and flexing device, with excellent sheet flexing, round forming and anti-scratching. And suitable for wide range of tinplate.
5. Ceramic and carbide material with good quality and super abrasive resistance for the key spare parts.
6. Remote control system, welding seam detecting system can be equipped.

主要性能参数

TECHNICAL SPECIFICATION

焊接速度/ Welding speed	70m/min (max)
生产速度/ Production speed	H133mm: 400cans/min (Max) H180mm: 300cans/min (Max) H240mm: 250cans/min (Max) H300mm: 200cans/min (Max)
罐身内径/ Can inner diameter	Φ52~Φ75mm
罐身外高/ Can height	100~320mm
焊点间距/ Welding points distance	0.5~0.9mm
搭接宽度/ Overlap	0.25~0.5mm
材料厚度/ Sheet thickness	0.16~0.30mm
硬度/ Temper	T2.5~DR8
铜线直径/ Copper wire	Φ1.24~1.38mm
输入电源/ Power supply	三相电压/Three phase Voltage: 380V 频率/ Frequency: 50Hz 总功率/ Power consumption: 45kw
焊接频率/ Welding frequency	250-850Hz
冷却水/ Cooling water	>0.4MPa, 12-18°C, 50L/min
压缩空气/ Compressed air	>800L/min, >0.6MPa

NEW DODO-300H 全自动电阻焊罐身焊接机 NEW DODO-300H FULLY AUTOMATIC CAN BODY WELDER

专业气雾罐焊机
Professional welder for aerosol cans

优越揉铁成圆效果
Superior sheet flexing and rounding

打罐平推机构
Horizontal can pushing structure

300罐/分钟 (最高)
300 cans/min(max)



主要特点

- 1.全局的设计理念，实现三片气雾罐身揉铁、成圆、焊接的快速生产工序；
- 2.人机界面，PLC系统，伺服系统，数字化控制技术；
- 3.独创电子式静态可调式变频焊接电源系统，即节能又稳定；
- 4.独特成圆揉铁装置，具有优越揉铁、成圆和抗划伤性能，适应铁质范围广；
- 5.超强耐磨陶瓷材质的铜线压海轮和Z型导轨；
- 6.可增配远程控制系统，焊缝检测系统；

MAIN FEATURES

1. New design concept, realizing the production processes of flexing, rounding and welding of 3-piece cans.
2. Human-computer interface, PLC system, digital control technology
3. Unique adjustable electronic static inverter power supply (SPWM), which is energy saving and stable.
4. Special rounding and flexing device, with excellent sheet flexing, round forming and anti-scratching. And suitable for wide range of tinplate.
5. Ceramic material with good quality and super abrasive resistance for copper wire profiling roller and Z-bar.
6. Remote control system, welding seam detecting system can be equipped.

主要性能参数

TECHNICAL SPECIFICATION

焊接速度/ Welding speed	48m/min (max)
生产速度/ Production speed	H133mm: 300cans/min (Max) H180mm: 240cans/min (Max) H240mm: 180cans/min (Max) H300mm: 150cans/min (Max)
罐身内径/ Can inner diameter	Φ52~Φ99mm
罐身外高/ Can height	100~320mm
焊点间距/ Welding points distance	0.5~0.9mm
搭接宽度/ Overlap	0.25~0.5mm
材料厚度/ Sheet thickness	0.16~0.30mm
硬度/ Temper	T2.5~DR8
铜线直径/ Copper wire	Φ1.24~1.38mm
输入电源/ Power supply	三相电压/Three phase Voltage: 380V 频率/ Frequency: 50Hz 总功率/ Power consumption: 45kw
焊接频率/ Welding frequency	200-450Hz
冷却水/ Cooling water	292-490KPa, ≤20°C, 40L/min
压缩空气/ Compressed air	>600L/min, >0.6MPa

NEW DODO-300D 智能电阻焊罐身焊接机 NEW DODO-300D INTELLIGENT CAN BODY WELDER

NEW DODO 全自动电阻焊罐身焊接机 NEW DODO FULLY AUTOMATIC CAN BODY WELDER

专业奶粉罐焊机
professional milk powder can
welding machine

优越揉铁成圆效果
Superior sheet flexing and
rounding

打罐平推机构
Horizontal can pushing
structure

300罐/分钟 (最高)
300 cans/min(max)



主要特点

1. 专为生产奶粉罐和大罐而设计，实现罐身揉铁、成圆、焊接的快速生产工序；
2. 人机界面、PLC系统、伺服系统、数字化控制技术；
3. 独创电子式静态可调式变频焊接电源系统，即节能又稳定；
4. 独特成圆揉铁装置，适应铁质范围广；
5. 超强耐磨陶瓷材料的铜线压前轮和Z型导轨；
6. 可增配无汞焊接装置、远程控制系统、焊缝检测系统；

MAIN FEATURES

1. Special design for milk powder cans and big cans, realizing the processes of flexing, rounding and welding
2. Human-computer interface, PLC system, digital control technology
3. Unique adjustable electronic static inverter power supply (SPWM), which is energy saving and stable.
4. Special rounding and flexing device, suitable for wide range of tinplate.
5. Ceramic material with good quality and super abrasive resistance for copper wire profiling roller and Z-bar.
6. Non-mercury welding device, remote control system and welding seam detecting system can be equipped.

主要性能参数

TECHNICAL SPECIFICATION

焊接速度/ Welding speed	40m/min (max)	
生产速度/ Production speed	罐型#202-#300: 300cans/min (Max) 罐型#401: 250cans/min (Max) 罐型#502: 180cans/min (Max) 罐型#603: 150cans/min (Max)	
罐身内径/ Can inner diameter	Φ52 - Φ99mm	Φ99 - Φ153mm (可定制至Φ175mm/special Customized to Φ175mm)
罐身外高/ Can height	65 - 265mm	
焊点间距/ welding points distance	0.5 - 0.9mm	
搭接宽度/ Overlap	0.25 - 0.5mm	
材料厚度/ Sheet thickness	0.16 - 0.30mm	
硬度/ Hardness	T2.5 - DR8	
铜线直径/ Copper wire	Φ1.24 - 1.38mm	
输入电源/ Power supply	三相电压/Three phase Voltage: 380V 频率/ Frequency: 50Hz 总功率/ Power consumption: 30KW	
焊接频率/ Welding frequency	200-450Hz	
冷却水/ Cooling water	>0.4MPa, ≤20°C, 40L/min	
压缩空气/ Compressed air	>600L/min, >0.6MPa	

打罐平推机构
Horizontal can pushing
structure

高效稳定焊接系统
efficient and stable welding system

150罐/分钟 (最高)
150 cans/min(max)



主要特点

1. 本机实现三片罐身揉铁、成圆、焊接的生产工序；
2. 人机界面、PLC系统、伺服系统、数字化控制技术；
3. 独创电子式静态可调式变频焊接电源系统，即节能又稳定；
4. 独特成圆揉铁装置，适应铁质范围广；
5. 伺服控制平推打罐机构；
6. 可增配无汞焊接装置、远程控制系统、焊缝检测系统；

MAIN FEATURES

1. New design concept, realizing the production processes of flexing, rounding and welding of 3-piece cans.
2. Human-computer interface, PLC system, digital control technology which is energy saving and stable.
3. Unique adjustable electronic static inverter power supply (SPWM), which is energy saving and stable.
4. Special rounding and flexing device, suitable for wide range of tinplate.
5. Horizontal pushing of can taking structure by servo control
6. Non-mercury welding device, remote control system and welding seam detecting system can be equipped.

主要性能参数

TECHNICAL SPECIFICATION

型号/ Model No.	NEW DODO-100D	NEW DODO-150
生产速度/ Production speed	100cans/min(Max)	150cans/min(Max)
罐身内径/ Can inner diameter	Φ99 - Φ179mm	Φ52 - Φ99mm
罐身外高/ Can height	70 - 265mm	
焊接速度/ Welding speed	9 - 26m/min (max)	
焊点间距/ Welding points distance	0.5 - 0.9mm	
搭接宽度/ Overlap	0.25 - 0.5mm	
材料厚度/ Sheet thickness	0.16 - 0.30mm	
硬度/ Temper	T2.5 - DR8	
铜线直径/ Copper wire	Φ1.24 - 1.38mm	
输入电源/ Power supply	三相电压/Three phase Voltage: 380V 频率/ Frequency: 50Hz 总功率/ Power consumption: 22Kw	
焊接频率/ Welding frequency	120 - 260Hz	
冷却水/ Cooling water	>0.5MPa, ≤20°C, 40L/min	
压缩空气/ Compressed air	>600L/min, >0.5MPa	

NEW DODO-60D 全自动电阻焊大桶罐身焊接机 NEW DODO-60D FULLY AUTOMATIC PAIL BODY WELDER



后置式成圆
Back rounding for options

可增配马口铁搬运机
Suitable Body Blank transfer system

最快 60罐/分钟(后置式)
Max 60 cans/min(Back rounding)

主要特点

- 1.本机实现三片罐身预铁、成圆、焊接的生产工序;
- 2.人机界面、PLC系统、伺服系统、数字化控制技术;
- 3.独创电子式静态可调式变频焊接电源系统, 即节能又稳定;
- 4.快速便捷更换罐型;
- 5.后置式成圆结构, 具有快速生产速度
- 6.可增配无汞焊接装置、远程控制系統、焊缝检测系统;

MAIN FEATURES

1. New design concept, realizing the production processes of flexing, rounding and welding of 3-piece cans.
2. Human-computer interface, PLC system, digital control technology
3. Unique adjustable electronic static inverter power supply (SPWM), which is energy saving and stable.
4. Fast and easy for chang-over tooling
5. Back rounding has the feature of high speed running
6. Non-mercury welding device, remote control system, welding seam detecting system can be equipped.

主要性能参数

TECHNICAL SPECIFICATION

型号/ Model No.	NEW DODO-60D
生产速度/ Production speed	35~60cans/min
焊接速度/ Welding speed	9~30m/min (max)
罐身内径/ Can inner diameter	Φ180~Φ380mm
罐身外高/ Can height	100~400mm (可定制至550mm/special Customized to 550mm)
搭接宽度/ Overlap	0.5~1.0mm
材料厚度/ Sheet thickness	0.21~0.40mm
硬度/Hardness	T2.5~DR8
铜线直径/ Copper wire	Φ1.38~1.50mm
输入电源/ Power supply	三相电压/Three phase Voltage: 380V 频率/ Frequency: 50Hz 总功率/ Power consumption: 25KW
焊接频率/ Welding frequency	80~260Hz
冷却水/ Cooling water	>0.5MPa, ≤20°C, 40L/min
压缩空气/ Compressed air	>600L/min, >0.6MPa

BT系列全自动马口铁搬运机 BT SERIES BODY BLANK TRANSFER SYSTEM



代替人工搬铁
Instead of manual carrying

适应罐型范围大
Available for wide range of can size

操作简易
Easy operation

主要特点

- 1.本机作为剪板机和焊机的连接桥梁, 实现自动收料、送料的功能;
- 2.人机界面、PLC系统、伺服系统、数字化控制技术;
- 3.洁净型尼龙输送带链条, 避免油污污染罐身铁;
- 4.导轨、轴承、电器元件、气动元件均采用国际知名品牌;
- 5.输送方式分为直线式和直角式, 可根据实际场地要求选配;

MAIN FEATURES

1. This transfer system is connected between the slitter and welder, which can realize automatic sheet collecting and feeding
2. Human-computer interface, PLC system, digital control technology
3. Clean type of nylon conveyor to avoid the can body blank from oil spots.
4. Famous international brands for guide-way, bearings, electrical parts and pneumatic components
5. Different ways of transferring: linear and right-angle, it depends on the customers' factory.

主要性能参数

TECHNICAL SPECIFICATION

型号/ Model No.	BT-1	BT-2	BT-3
罐身内径/ Can inner diameter	Φ99~Φ153mm	Φ52~Φ85mm	Φ180~Φ380mm
罐身高度/ Can height	65~265mm	50~220mm	100~550mm
生产速度/ (max) Production speed	300pieces/min	1000pieces/min	100pieces/min
适应领域/ Available type	奶粉罐 Milk Powder Can	饮料罐、食品罐、气雾罐 Beverage & Food Can & Aerosol Can	18L大桶 18L Big Pail
输入电源/ Power supply	AC380V, 50Hz, 2.5KW		AC380V, 50Hz, 5KW
压缩空气/ Compressed air	0.5MPa, 20L/min		

PC-08A 智能粉末喷涂机

PC-08A INTELLIGENT POWDER COATING MACHINE

产品介绍

PRODUCT INTRODUCTION

PC-08A 智能粉末喷涂机利用稳定的气流系统将粉末涂料均匀地从喷枪喷出,在静电作用下,粉末涂料均匀地吸附在罐身焊缝表面,经过高温烘烤后形成一层保护层,隔离罐头内容物与罐身焊缝的接触。

This machine uses the stable airflow system to spray the powder material evenly from the spraying gun. With the static effect, the powder material can be coated on the welding seam evenly. After high temperature curing, there is one protection layer which is able to isolate the filled product from the welding seam.

生产样品

PRODUCTION SAMPLE



智能平衡气流
Intelligent airflow balance

自动清理
Automatic cleaning

补涂带均匀整齐
Even and neat coating layer

主要特征

MAIN FEATURES

1. 过滤器可定时自动清理功能;
2. 供粉流量、涂层厚度和宽度可便捷调整;
3. 供粉、送粉、喷粉和回粉系统设计独特,确保粉末均匀喷出和稳定回收;
4. 根据粉末流动特性,巧妙设计粉末充电通道,大幅提升粉末带电量,提高粉末的附着率;
5. 智能识别有罐喷粉、无罐空转,粉槽料量智能监控,自动供给粉末涂料;
6. 人机界面,操作简便

1. The filter can be set as timing automatic cleaning.
2. Convenient adjustment for powder flux supplying, coating thickness and width.
3. Special design for powder supplying, conveying, spraying and recycling system, ensuring evenly spraying out and stable recycling.
4. Ingenious design for powder charging channels according to the flow features of powder material, it can enhance powder electrified capacity greatly and the powder adhesive force.
5. Intelligent identification: No Cans No Spraying, Intelligent control for the powder quantity of powder pail, automatic supplying the powder material when the powder is not enough.
6. Human-computer Interface, easy operation

主要性能参数

TECHNICAL SPECIFICATION

传送速度 Conveying Speed	10-85m/min
喷涂宽度 Coating Width	8-15mm
适应罐径 Applicable Can Diameter	52-400mm
输入电源 Power Input	单相, AC220V-240V, 50/60Hz
压缩空气 Compressed Air	0.6Mpa, 100L/min

焊缝内液体喷涂系统

INTERNAL SPRAYING COATING MACHINE

配置美国Nordson泵、喷枪和喷嘴、输涂臂、涂料加热保温装置、高压管;

Equipped with Nordson pump, spraying gun and nozzle, spraying arm, heating and heat insulation device for coating material and high-pressure tube



罐身过渡机

CANBODY TRANSITION MACHINE



焊缝外补涂输送机

EXTERNAL COATING MACHINE



焊缝外液体喷涂装置

EXTERNAL LACQUER SPRAYING COATING UNIT



配置美国喷枪和喷嘴,确保喷涂带均匀无气泡,保障焊缝补涂效果可靠;

Equipped with American spraying gun and nozzle, to guarantee the spraying layer is even and no bubble, making a good coating on the welding seam.

焊缝外液体滚涂装置

EXTERNAL ROLL COATING UNIT



配置无极调速电机,优质滚涂轮;

Worm gear reducer with variator, High quality of roll coating roller

SP系列电磁感应烘干机 SP SERIES INDUCTION DRYING OVEN

稀土导磁
Rare-earth material as magnetizer

高效稳定
Efficient and stable

节能环保
Energy saving and environmental protection



国家专利保护产品
NATIONAL PATENT PROTECTION PRODUCTS

产品介绍 PRODUCT INTRODUCTION

本机利用调制逆变电源变频技术,使交变电流对金属罐焊缝涂层产生特定涡流发热,从而达到烘烤固化效果。适用于饮料罐、食品罐、气雾罐、奶粉罐、化工罐等各种罐型,规格和不同生产速度的制罐线。

It works based on the SPWM technology, generating vortex heating by A/C on the welding seam to get curing.

It is suitable for different can sizes, type and different speed of food, beverage, aerosol, milk powder and chemical cans production.

MAIN FEATURES

- Adopts rare-earth material as the magnetizer of induction coil to guarantee stable and excellent drying in long-time heating.
- Adopts bilateral SPWM pulse modulated, effectively control the output signal of the AC current to avoid the zero point of the oscillation and protect the controlling circuit from being effected by general power supply.
- Energy saving: heating when cans running, no can no heating.
- Human-computer interface, PLC system, digital control technology
- Equipped with excellent waste-air evacuation system, avoiding air pollution in the workshop.
- Various can body conveying types, which are customized.
- Intelligent temperature control system is available can be equipped.

主要特点

- 使用稀土导磁材料作为感应线圈,保证长期加热稳定和烘干效果;
- 采用双边SPWM脉冲调制,有效抑制交变电流输出信号通过零点的震荡,避免控制电路受市电的影响;
- 实现有罐加热,无罐断电的节能效果;
- 人机界面、PLC系统、数字化控制技术;
- 配置强动废气集中排放装置,避免污染车间空气;
- 多种罐身输送方式,可根据实际情况选配;
- 可选配智能温度控制功能;

主要性能参数

TECHNICAL SPECIFICATION

单个炉头有效加热长度1.3米,最低功耗功率1kw
Heating length of single oven is 1.3m, the lowest power consumption is 1kw

生产速度 Production speed

适用罐径/ Range of can diameter

输入电源/Power supply

根据要求
customization

AC380V, 50Hz

LT-A 系列智能气雾罐检漏机 LT-A SERIES INTELLIGENT AEROSOL CAN LEAK TESTER

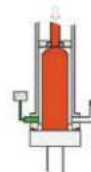
高压差检测
High Pressure
Difference Detection

模拟高压灌装状态
Analog of high pressure filling

适用产品
APPLICABLE PRODUCT



工作原理



本设备将空罐送入密封的套筒内,采用密封装置将空罐内部与外部密封隔离,然后向空罐内充入压缩气体,使罐内的压力达到8到12bar;罐外常压;从而将空罐置于内部高压外部常压的高压差工况下,来模拟空罐灌装高压内容物后的状态,并经过一段保压时间,若有泄漏,即使微小的泄漏也会引起套筒内的压力变化,由压力传感器读取数据并进行分析,若超过设定值,系统将视为废品剔除。

WORKING PRINCIPLE

This machine transfers the empty cans into the hermetic test chamber and adopts a hermetic device to insulate the inside and outside of empty cans. Fill compressed air into the cans and make the inside pressure to 8-12bar, while the outside remains common pressure. Thus, the empty cans will be in high pressure difference (high pressure inside, ordinary pressure outside). In that case, analog the status after filling the content into the empty cans with high pressure and check during the holding time. If there is any leakage, even tiny leakage will cause the pressure changing in the chamber, the pressure sensor will read the data and analyze it. If it is an over value, the can will be rejected as a defective can.

主要特点

- 高精度压力传感器
- 先进数据分析系统
- 智能控制系统
- 超强耐疲劳拉罐爪
- 密封系统可靠高,寿命长
- 高压差检测
- 无损在线检测
- 数字化显示
- 快速更换型号

MAIN FEATURES

- High precision pressure sensor
- Advanced system for data analysis
- Intelligent control system
- Super anti-fatigue can pulling claw
- High reliable hermetic system and long life
- High pressure difference inspection
- Non-destructive online detection
- Digital display
- Quick change-over

主要性能参数

TECHNICAL SPECIFICATION

型号/ Model No.	LT-A24	LT-A36	LT-A48
工位头数 Number of Heads	24	36	48
生产速度 Production Speed	Max.200cans/min	Max.300cans/min	Max.400cans/min
适用罐径 Can Diameter	Φ45-Φ65		
适用罐高 Can Height	100-320mm		
检测范围 Inspection Range	≥1.5CC/10bar/min		
耗气量 Air Consumption	3m ³ /min	4.5m ³ /min	6m ³ /min
	≥8bar	≥8bar	≥8bar
耗电 Power Consumption	5.5KW	6.5KW	6.5KW

LT-M 系列智能奶粉罐检漏机

LT-M SERIES INTELLIGENT MILK POWDER CAN LEAK TESTER

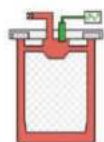
**精确
剔除漏罐**

保证铝箔不受损

适用产品
APPLICABLE PRODUCT



工作原理



检测时, 封好盖的铁罐被送入转盘上的检测工位, 密封盘密封住罐口并充入相应的气压, 精密压力传感器读取第一个数值, 经过一段时间保压, 传感器读取第二个数值, 即使微小的泄漏也会引起罐内压力的变化, 系统将两个数值进行分析, 结果若超过设定值, 系统将视为废品罐剔除。设备各检测工位配有相互独立的检测回路, 避免各工位的气流相互干扰而影响检测精度。

主要特点

- 高精密度压力传感器
- 先进数据分析系统
- 智能控制系统
- 独立检测回路
- 无损在线检测
- 快速更换罐型
- 食品级密封圈, 气管, 接头

主要性能参数

TECHNICAL SPECIFICATION

型号/ Model No.	LT-M18	LT-M24	LT-M36
工位头数 Number of Heads	18	24	36
生产速度 Production Speed	Max.150cans/min	Max.200cans/min	Max.300cans/min
适用罐径 Can Diameter	Φ99-Φ153		Φ73-Φ99
适用罐高 Can Height	100-240mm		
检测范围 Inspection Capacity	≥0.05mm		
耗气量 Air Consumption	400L/min 5bar	500L/min 5bar	800L/min 5bar
耗电量 Power Consumption	6KW		8KW



WORKING PRINCIPLE

When testing, the empty cans will be transferred to the testing position on the turntable, then its open-end is sealed up by the sealing disk and filled with air pressure. The precise pressure sensor will read the first data. After the pressure holding time, the second data will be read. These two data will be analyzed by system, and the over-value can will be rejected as defective cans. There is independent testing circulation on the testing position to avoid interference by airflow of each position which will affect the testing precision.

MAIN FEATURES

- High precision pressure sensor
- Advanced system for data analysis
- Intelligent control system
- Independent testing circuit
- Non-destructive online inspecting
- Quick to change can size
- Food grade sealing ring, air pipe and joint

LT-F 系列全自动食品罐检漏机

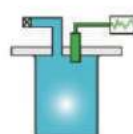
LT-F SERIES FULLY AUTOMATIC FOOD CAN LEAK TESTER

**整机设计
安全外罩**
SAFE COVER IS
AVAILABLE FOR
THIS MACHINE

适用产品
APPLICABLE PRODUCT



产品介绍



本设备利用真空原理检测金属罐体是否有裂缝异常, 采用精密检测元件检测金属罐体感应力, 检测功能优良, 对细微针孔亦能检出。金属罐空罐体凸轮分体推进高速稳定旋转的真空吸阀门位置, 使罐体内产生真空, 经由电子压力检测器检测罐内微量压力变化, 与设定值空罐真空度对比检测不良罐体并剔除。

主要特点

1. 全自动控制系统, 实现在线自动化检测需求。
2. 高精密度压力传感器。
3. 换型及调整简单快速, 保养维护方便。
4. 触摸屏控制, 调整参数, 速度调整, 故障排除简单化。
5. 可配转盘式调整罐高。

主要性能参数

TECHNICAL SPECIFICATION

型号/ Model No.	LT-F40	LT-F60
生产速度 Production Capacity	480cans/min(max)	750cans/min(max)
适用罐径 Range of Dia	Φ52-99 mm	Φ52-79 mm
适用罐高 Range of Can Height	60-180 mm	60-180 mm
检测能力 Inspection Capacity	≥0.05 mm	≥0.05 mm
耗气量 Air Consumption	0.6MPa 60L/min	0.6MPa 100L/min
耗电量 Power Consumption	5KW	5KW
用途 Application	适用于食品罐 for food can	



PRODUCT INTRODUCTION

This machine adopts vacuum principle to detect whether there is leak on the can body. With precise detection components to detect can body sensing value, detecting performance is excellent, even small pinhole can be detected easily. Empty can is lifted up by cam and pushed into the vacuum sucking valve which steady in high speed rotating to make the can inside vacuumed. Certain time later, an electronic precise pressure sensor is to detect micro-pressure variation inside the can, the non-conforming pressure cans will be rejected.

MAIN FEATURES

1. Fully automatic control system, realizing online automatic testing.
2. High precision pressure sensor.
3. Easy for can size changeover and maintenance.
4. Touch screen controller is easy to adjust the parameters and running speed, easy to shooting troubles.

LT-E 智能易撕盖检漏机 LT-E SERIES INTELLIGENT POE LEAK TESTER

独立
检测回路
Independent
testing circuit

适用产品
APPLICABLE PRODUCT



工作原理

检测时,待检测易撕盖通过进盖输送组件、落盖组件、分盖组件后依次通过星轮槽后后送入大转盘,通过气缸驱动带着密封盘定点下降实现盖子密封,并充入压缩空气开始进行检测,定点升起实现盖子破密封,精密压力传感器读取第一个数值,经过一段时间保压,传感器读取第二个数值,即使微小的泄漏也会引起压力的变化,系统将两个数值进行分析,结果若超过设定值,系统将视为废品盖剔除。设备各检测工位配有相互独立的检测回路,避免各工位的气流相互干扰而影响检测精度。

WORKING PRINCIPLE

During the detection, the POE to be detected is fed into the large turntable through the star wheel groove after going through ends entering assembly, ends feeding assembly and ends separating assembly. Then it will make ends hermetic by fixed position descending the seal disc driven by cylinder and fill compressed air to start testing. After that, POE will be lifted at the fixed point to break the seal. Precised pressure sensor reads the 1st value, after a period of pressure retention, the sensor reads the 2nd value, even tiny leakage will cause pressure changes, the system will analyze the two values, if the result exceeds the set value, this POE will be regarded as defective one and rejected. Each detection station is equipped with an independent detection loop to avoid the interference of the air flow of each station and affect the detection accuracy.

主要特点

- 先进数据分析系统
- 智能控制系统
- 高精度压力传感器
- 食品级检测气源储存罐
- 高精度空气过滤器
- 独立检测回路
- 优质硅胶密封圈
- 具有卡盖报警、故障工位自动跳盖等功能
- 无瓶在线检测

MAIN FEATURES

- Advanced system for data analysis
- Intelligent control system
- High precision pressure sensor
- Food grade detection air source tank
- High precision air filter
- Independent testing circuit
- High quality silicone seal ring
- End stuck alarm and auto skip-end at fault station function
- Non-destructive online inspecting

主要性能参数

TECHNICAL SPECIFICATION

型号/Model No.	LT-E18
工位头数 Number of Heads	18
生产速度 Production speed	Max.300cans/min
适用盖型 End Diameter	Φ99-153 mm
检测能力 Inspection Capacity	≥0.03mm
盖内填充压力 Filling pressure	20~95mbar
耗气量 Air Consumption	6bar 200L/min
耗电量 Power Consumption	7 KW

配套产品

ACCESSORY PRODUCTS



输送带 Conveyor



三片罐罐身组合机 3-piece Can Body Combination Machine



全自动码垛机 Automatic Palletizer



示例托盘尺寸 / Pallet size: 1200mm×1000mm		
罐型(mm)	每层数量	高架码垛机
Can diameter	Qty of each layer	HLPT Palletizer
Φ52缩径(Necking)	462 cans	1600 cans/min
Φ52不缩径(No Necking)	420 cans	1500 cans/min
Φ65缩径(Necking)	289 cans	1000 cans/min
Φ65不缩径(No Necking)	272 cans	950 cans/min
Φ72.9	225 cans	780 cans/min
Φ83	169 cans	600 cans/min
Φ99	121 cans	420 cans/min
Φ105	100 cans	350 cans/min
Φ126	70 cans	250 cans/min
Φ153	49 cans	170 cans/min
Φ189	33 cans	110 cans/min



两片罐三模无空冲生产线

TWO-PIECE CANS CONTINUOUS PUNCHING PRODUCTION LINE(THREE DIE)



产品介绍

PRODUCT INTRODUCTION

两片罐三模无空冲生产线是由板件自动供料机、送料机、自动数控平台、冲床、模具、收集机及一系列同步机构、输送带和智能操作系统所构成的智能化自动生产线，设备以高效率、低故障、智能化及人工安全为主要特征，按罐型可以生产以二片罐为主的各种冲拉罐，三片罐上下盖为名的各种盖形，主要产品如下：

二片冲拉罐：

各种圆形冲拉罐，如538、668、7110、758、840、843、846、854、948等。

各种异形冲拉罐：

如#311(125g)、椭圆二片罐(601、604)、香烟盖拉伸卷圆罐等。

各类圆盖：

如1-5L油漆罐底盖、环盖、中心盖、18-20L花篮桶底盖、上盖等。

各类异形底盖：

如1-5L方盖、午餐罐底盖、角5A方盖、T形罐上盖下盖、芦笋罐底盖、铝膜易撕盖、椭圆盖等。

Two-piece cans continuous punching production line (three die) is automatic sheet loader, CNC feeding table, press, mould, stacker, and synchronized mechanism, conveyor, intelligent operating system.

The main features are high efficiency, low malfunction, intelligent and safety, It is mainly for 2-piece cans, including the drawn can & the can ends of 3-piece can:

2-piece drawn can

all kinds of drawn cans in round shape such as #538, #668, #7110, #758, #840, #843, #846, #854, #948 etc.

All kinds of irregular drawn can: #311(125g), 2-piece drawn can in oval shape (601,604), 2-piece cigarette can etc.

All kinds of round ends such as bottom ends of 1-5L painting can, ring and center top, top and bottom lids of 18-20L pail.

Irregular can bottom such as the bottoms for 1-5L rectangular can, bottoms for rectangular luncheon meat can, bottom for 125g rectangular can, lid & bottom for T shaped can, the basic can end for canned asparagus, aluminum peel-off end, oval can end etc.

工作原理

WORKING PRINCIPLE

1. 将定制尺寸的材料放入供料机的活动料台并定位好，启动提升机构将材料置于真空吸盘可以吸到的位置。
2. 真空吸盘将材料吸起并输送到数控平台上。
3. 数控台启动，夹钳将材料夹紧并按照预设路径运行，压力机床与数控台协调动作 将材料冲剪成型，依次吹往输送带，并完成后续工序。
4. 每冲完一张材料后，夹钳自动松开，废料由收废料机构收取。

1. Put the customized tinplate sheets into the CNC table of feeder and make it positioned. Start the lifter to send the sheets to the place on which the sheet can be sucked by the vacuum sucker.
2. Sheets will be sucked and sent to the CNC table by vacuum sucker.
3. Start the CNC table, sheets will be clamped and running as the pre-set route. With the movements of pressure machine and CNC table, the sheets will be punched in shape, and blew to the conveyor one by one to finish the downstream processes.
4. The clamp shall release automatically after punching each piece of sheet and the scrap will be collected by the scrap-collector.

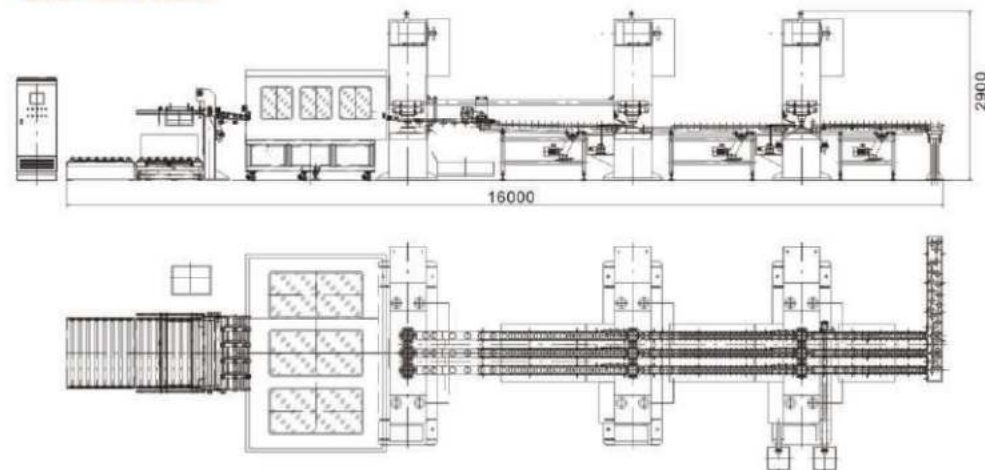
主要特点

MAIN FEATURES

1. 人机交互触摸式界面，操作简便。
 2. 全套电器采用欧姆龙及施耐德元件，马达采用欧姆龙伺服运动控制系统。
 3. 故障自动侦测系统，自动报警并提供排查方案系统。
 4. 气动元件：德国费斯托品牌和台湾亚德客品牌。
 5. 模具重要零件材料为硬质合金，模具弹簧为大同品牌。
 6. 依次循环，直到送料机上的材料全部冲完为止。
1. Human-machine interface for easy operation.
 2. Use OMRON and SCHNEIDER components for electrical parts, and OMRON servo control system for motors.
 3. Automatic mal-function detecting system, automatic alarm and provide solution.
 4. Pneumatic components: famous brand like FESTO and AIRTAC.
 5. Adopts hard carbide material for the important parts of the mould, and springs from DATONG.
 6. Recycling in turns till the sheets finish punching.

生产示意图

PRODUCTION SCHEMATIC DIAGRAM



适用产品

APPLICABLE PRODUCT





智能化异形罐组合机(单/多通道)

INTELLIGENT COMBINATION MACHINE FOR IRREGULAR CANS(SINGLE/MULTI CHANNEL)



适用产品
APPLICABLE PRODUCT



产品介绍

PRODUCT INTRODUCTION

智能化异形罐组合机是我司推出的主打产品之一。本机专门服务于制罐厂家异形罐罐身的制作。按方罐生产工艺要求，集罐体送罐、焊缝定位、胀方、印身、扩径、翻边、出罐于一体，减少了多道工序间的搬运装卸环节，降低了生产成本，提高了生产效率。同时本机采用传送卡罐保护，同步联动控制，更好的保证了产品的质量。

Irregular Can Body Combination Machine is one of our main products. The machine is specially made to focus on the irregular can body making. Based on the production technology request, this machine consists of the functions of can body feeding, seam locating, expanding, paneling, neck expanding, flanging, and output into one machine, which will save the material carrying & loading process between each machine to lower the production cost and increase the production efficiency. Meanwhile, it adopts the can stuck protection, synchronically linking control, to guarantee the machine quality.

技术参数

TECHNICAL PARAMETER

项目 / Items	单通道 / Single channel	双通道 / Double channel
生产效率 / Production capacity	50-55 cans/min	100-110cans/min
适用罐型 / Can size	午餐方罐、T型罐、1L-5L方罐 Luncheon Meat Can, T-shape Can, 1L-5L rectangular cans and other irregular cans	
电源电压 / Supply voltage	三相 Three-phase, 380V, 50Hz	
电器功率 / Electrical power	12 kw	24 kw
冷却水 / Cooling water	0.2mpa, ≤20°C	
压缩空气 / Compressed air	0.6 MPa, 0.5m ³	0.6 MPa, 0.9m ³
外形尺寸 / Overall size(L*W*H)	4900*750*1900mm	4900*1580*1900mm
总重量 / Total weight	约4吨 / About 4T	约8吨 / About 8T



自动复式圆刀裁剪机

AUTOMATIC DUPLEX GANG SLITTER



产品介绍

PRODUCT INTRODUCTION

自动复式圆刀裁剪机由供料机构、第一道送料平台、第一道高精度裁剪机、第二道送料平台、第二道高精度裁剪机及自动收料机(可选配机械手)组成。

电气元件采用国际主流品牌，轴承均使用日本NSK，并具有双张检测保护装置。

裁剪机座采用球墨铸造工艺，主动轴及滚剪刀片使用进口设备制造，确保剪切精度高。

Automatic Duplex gang slitter consists of a feeding mechanism, a first feeding platform, a first high-precision cutting machine, a second feeding platform, a second high-precision cutting machine, and an automatic material receiving machine (with an optional manipulator).

The electrical components adopt international mainstream brands, and the bearings all use Japanese NSK, with dual sheet detection and protection devices.

The cutting machine base adopts a ductile iron casting process, and the driving shaft and rolling shear blade are manufactured using imported equipment to ensure high cutting accuracy.

技术参数

TECHNICAL PARAMETER

主要性能及参数	参数值 / Parameter value
裁剪速度 / Slitting speed	32piece / min(Max)
剪切铁皮的使用范围 / Range of Cutting Iron Sheet	600~1200mm, 600~1200mm
剪切铁皮的厚度 / Thickness of Cutting Iron Sheet	0.16~0.4mm
裁剪直角度误差 / Slitting diagonal tolerance	≤0.05mm
第一道最大分条数量 / 1st slitting quantity	一道常规配置4条 / 1st default configuration 4 strips 一道支持定制最大可定制6条 / 1st Customizable 6 strips(Max)
第二道最大分条数量 / 2nd slitting quantity	二道常规配置7条 / 2nd default configuration 7 strips 二道支持定制最大可定制12条 / 2nd Customizable 12 strips (Max)
装机总功率 / Total Unit Power	10KW
机器外型尺寸 / Dimension of Machine (L×W×H)	6600×3700×1530mm
压缩空气 / Compressed air	0.5MPa, 12 L/min