



Official UK Sales & Service Partner for Haitian International

Ladymead Business Park, Quainton, Aylesbury, Bucks, HP22 4AN

Sales - 01296 655 555 • Service - 01296 653 037

sales@haitian.co.uk

www.haitian.co.uk

HAITIAN PLASTICS MACHINERY GROUP CO., LTD

No. 1688 Haitian Road, Xiaogang, Beilun, Ningbo, P. R. China.

+ 86-574-8617 7005 (China)

+ 86-574-8617 7242 (International)

haitian@mail.haitian.com

www.haitianpm.com

NINGBO HAITIAN HUAYUAN MACHINERY CO.,LTD.

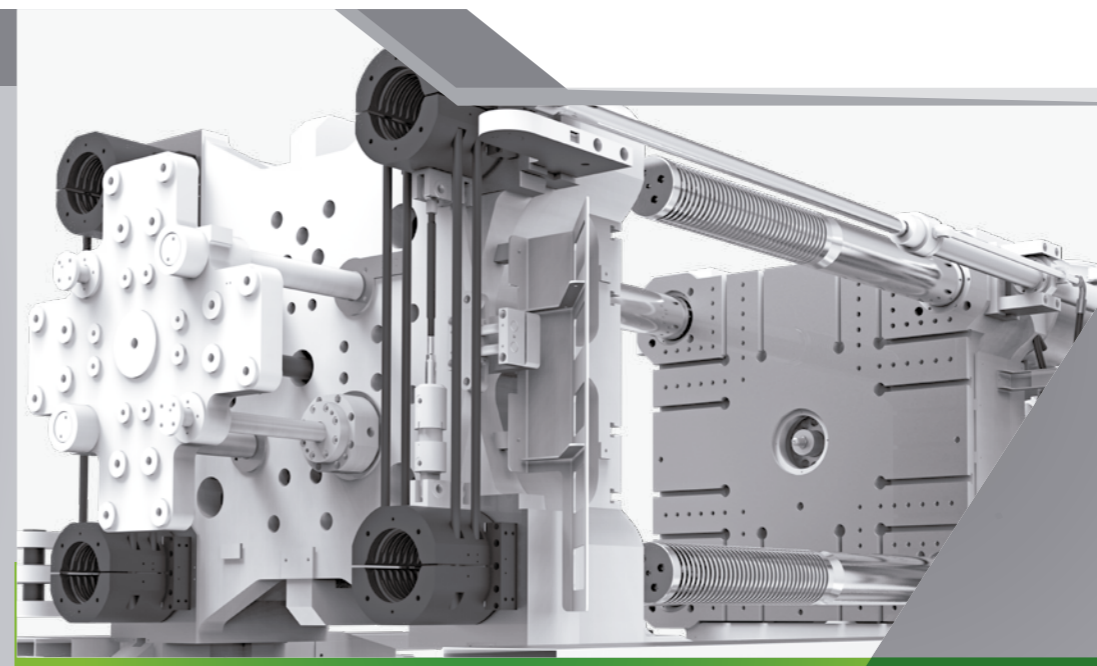
Export Processing Zone, Ningbo 315800 China

+86-574-8617 7242

+86-574-8622 1864

haitian@mail.haitian.com

www.haitianpm.com



SPECIFICATIONS

GLOBAL



HAITIAN JUPITER III SERIES

Servo hydraulic two-platen solution

12,000 - 66,000 kN

High Speed

JU 20190327-IV



SPECIFICATION JU12000III

SPECIFICATIONS
INJECTION UNIT

	5330	6730	JU12000III				8930	11300											
CLAMPING UNIT																			
Clamping force	kN					12000			kN	Clamping force									
Dist. between tie bars (HxV)	mm					1300x1200			mm	Dist. between tie bars (HxV)									
Mold height max	mm					1250			mm	Mold height max									
Mold height min	mm					600			mm	Mold height min									
Ejector stroke	mm					350			mm	Ejector stroke									
Ejector force	kN					230			kN	Ejector force									
Max. daylight	mm					2650			mm	Max. daylight									
Mold opening stroke ①	mm					2050/1400			mm	Mold opening stroke ①									
Max. mold weight ②	t					20			t	Max. mold weight ②									
INJECTION UNIT																			
Screw diameter	mm	A	B	C	D	A	B	C	D	A	B	C	D	mm	Screw diameter				
Screw L /D ratio	L/D	24.8	22	19.8	18	24.4	22	20	18.3	24.2	22	20.2	18.6	L/D	Screw L /D ratio				
Injection volume (theoretical)	cm ³	2262	2863	3534	4276	2990	3691	4467	5316	4006	4847	5768	6769	cm ³	Injection volume (theoretical)				
Injection weight (PS)	g	2058	2605	3216	3892	2721	3359	4065	4837	3645	4410	5249	6160	g	Injection weight (PS)				
Injection rate	g/s	608	770	951	1150	642	793	960	1142	762	922	1097	1288	g/s	Injection rate				
Injection pressure	MPa	204	161	131	108	193	157	129	109	196	162	136	116	MPa	Injection pressure				
Injection pressure (max)	MPa	236	187	151	125	222	180	149	125	223	184	155	132	MPa	Injection pressure (max)				
Plasticizing rate (GPPS) ③	g/s	80.6	101	125	146	89.5	110	130	152	101	121	140	161	g/s	Plasticizing rate (GPPS) ③				
Plasticizing rate (HDPE) ④	g/s	119	151	186	219	132	162	193	224	147	177	201	231	g/s	Plasticizing rate (HDPE) ④				
Screw speed	rpm	165				135				116				105				rpm	Screw speed
OTHERS																			
Pump motor power	kW	85				85				112				130				kW	Pump motor power
Heating power	kW	54				71				83				104				kW	Heating power
Machine dimension (L x W x H)	m	9.69x3.37x2.89				9.80x3.37x2.90				10.14x3.37x3.63				10.93x3.37x4.24				m	Machine dimension (L x W x H)
Machine weight	t	49				51				52				56				t	Machine weight
Hopper capacity	kg	100				100				200				400				kg	Hopper capacity
Oil tank	l	730				780				960				1250				l	Oil tank

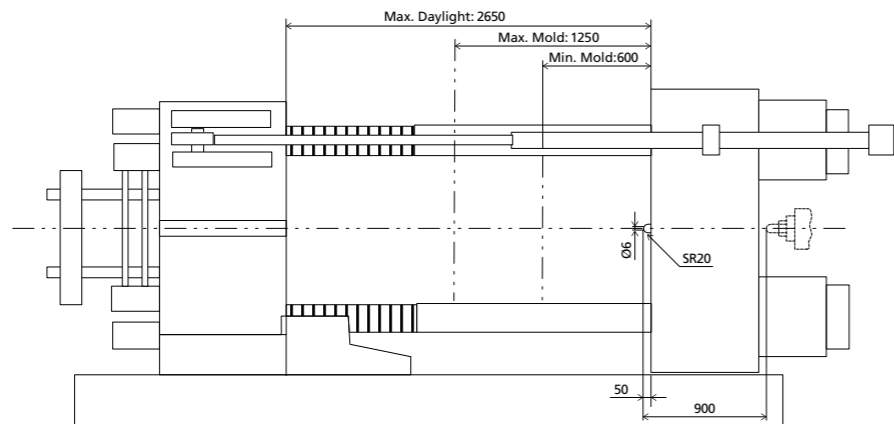
NOTE:

- ① with min. mold height / with max. mold height
 - ② moving platen: 2/3 of max. mold weight
 - ③ Plasticizing capacity (GPPS): GB standard, with application of GPPS plasticizing capacity of 3-zone screws
 - ④ Plasticizing capacity (HDPE): Euromap 19, with application of HDPE plasticizing capacity of barrier screws
- The above plasticizing capacity is for reference only.

We reserve the right to make changes as a result of further technical advantages.

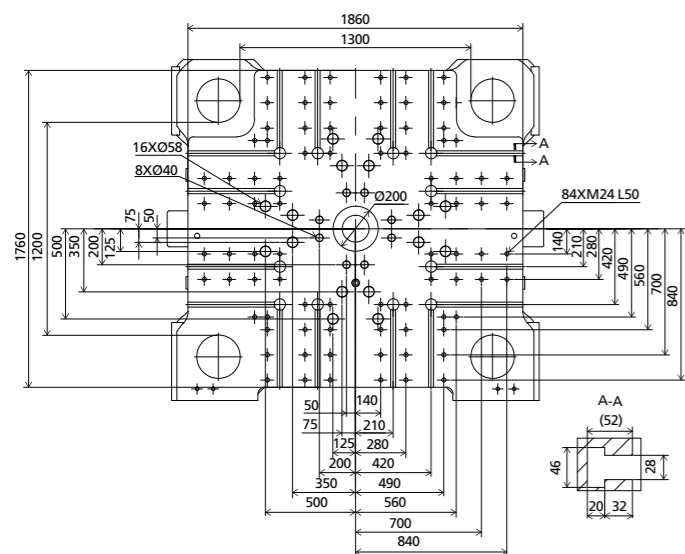
DIMENSIONS JU12000III

Clamping Unit



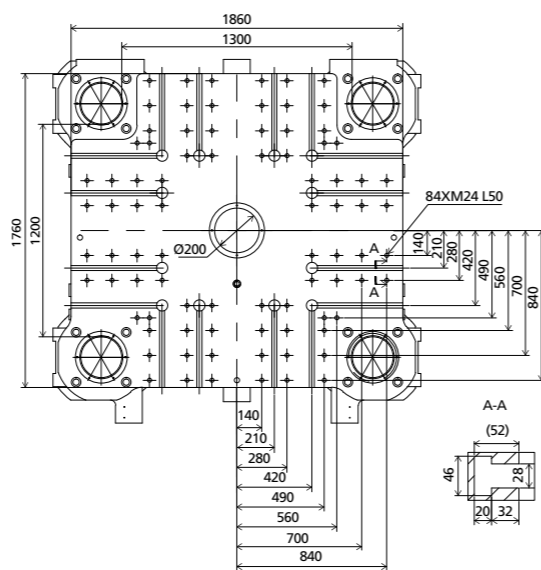
Platen dimensions

Moving platen



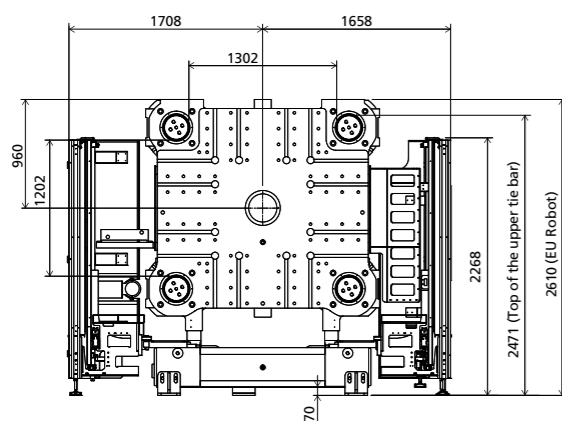
Platen dimensions

Fixed platen



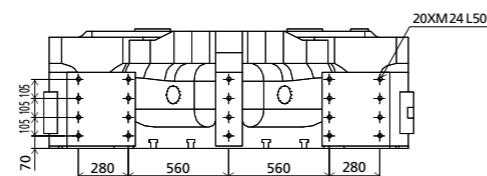
Robot

Mechanical interface

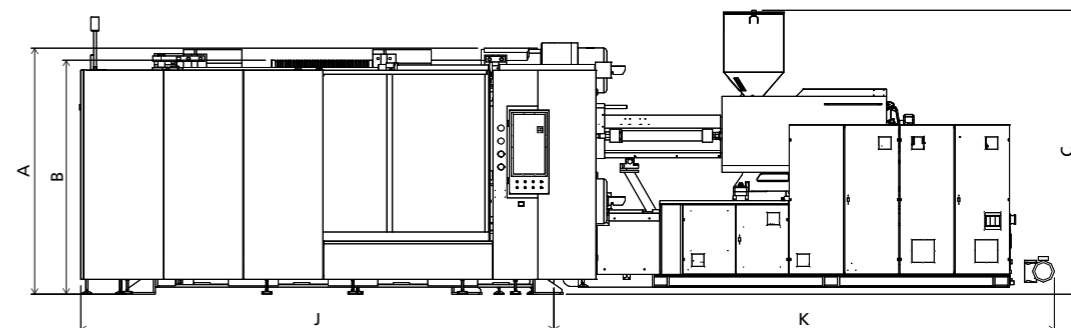


Robot

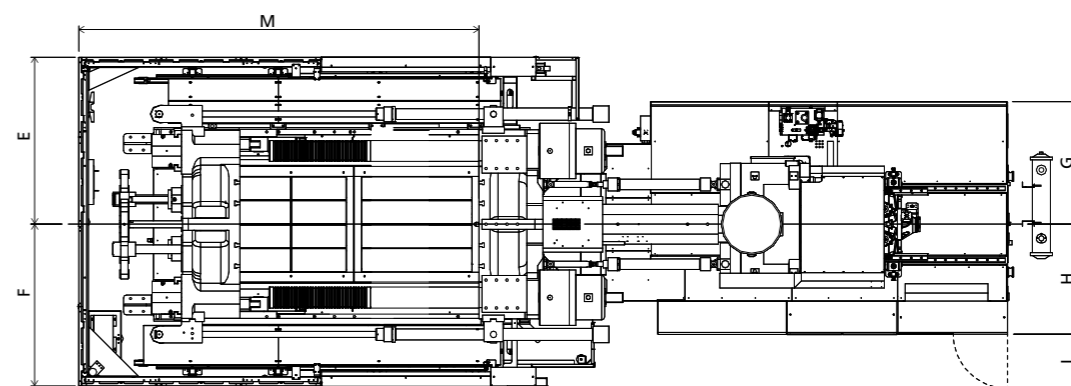
Top view fixed platen



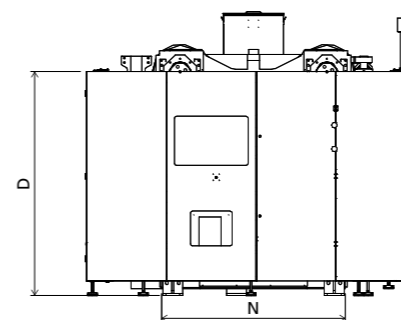
Front view



Top view



Side view



Standard

	A	B	C	D	E	F	G	H	I	J	K	M	N
5330	2610	2471	2885	2250	1708	1658	1203	1027	544	5102	4586	4307	1870
6730	2610	2471	2900	2250	1708	1658	1198	1042	544	5102	4689	4307	1870
8930	2610	2471	2910	2250	1708	1658	1228	1102	544	5102	4913	4307	1870
11300	2610	2471	4240	2250	1708	1658	1318	1212	544	5102	5821	4307	1870

INJECTION UNIT
DIMENSIONS (mm)

We reserve the right to make changes as a result of further technical advantages.

SPECIFICATION JU13000III

SPECIFICATIONS
INJECTION UNIT

	6730	8930	JU13000III				17300										
					11300												
CLAMPING UNIT																	
Clamping force	kN					13000				kN							
Dist. between tie bars (HxV)	mm					1420x1170				mm							
Mold height max	mm					1350				mm							
Mold height min	mm					600				mm							
Ejector stroke	mm					350				mm							
Ejector force	kN					230				kN							
Max. daylight	mm					2850				mm							
Mold opening stroke ①	mm					2250/1500				mm							
Max. mold weight ②	t					23				t							
INJECTION UNIT																	
		A	B	C	D	A	B	C	D	A	B	C	D				
Screw diameter	mm	90	100	110	120	100	110	120	130	110	120	130	140	130	140	150	
Screw L /D ratio	L/D	24.4	22	20	18.3	24.2	22	20.2	18.6	26.2	24	22.2	20.6	24	22.3	20.8	
Injection volume (theoretical)	cm ³	2990	3691	4467	5316	4006	4847	5768	6769	5227	6220	7300	8467	8362	9698	11133	
Injection weight (PS)	g	2721	3359	4065	4837	3645	4410	5249	6160	4756	5661	6643	7705	7610	8825	10131	
Injection rate	g/s	774	955	1156	1376	762	922	1097	1288	924	1100	1291	1497	1236	1433	1646	
Injection pressure	MPa	193	157	129	109	196	162	136	116	190	159	136	117	186	160	140	
Injection pressure (max)	MPa	222	180	149	125	223	184	155	132	218	183	156	135	211	182	158	
Plasticizing rate (GPPS) ③	g/s	99.4	122	144	169	101	121	140	161	123	142	164	187	168	192	220	
Plasticizing rate (HDPE) ④	g/s	147	180	214	250	147	177	201	231	187	217	210	241	252	283	336	
Screw speed	rpm	150				116				105				102			
OTHERS																	
Pump motor power	kW	112				112				130				167			
Heating power	kW	71				83				104				116			
Machine dimension (L x W x H)	m	10.10x3.53x3.00				10.43x3.53x3.73				11.23x3.53x4.34				11.53x3.53x4.62			
Machine weight	t	56				57				60				65			
Hopper capacity	kg	100				200				400				400			
Oil tank	l	780				960				1250				1550			

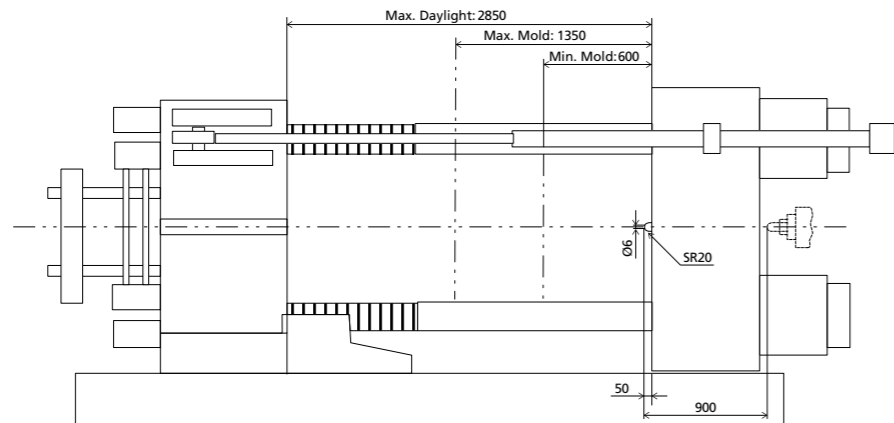
NOTE:

- ① with min. mold height / with max. mold height
 - ② moving platen: 2/3 of max. mold weight
 - ③ Plasticizing capacity (GPPS): GB standard, with application of GPPS plasticizing capacity of 3-zone screws
 - ④ Plasticizing capacity (HDPE): Euromap 19, with application of HDPE plasticizing capacity of barrier screws
- The above plasticizing capacity is for reference only.

We reserve the right to make changes as a result of further technical advantages.

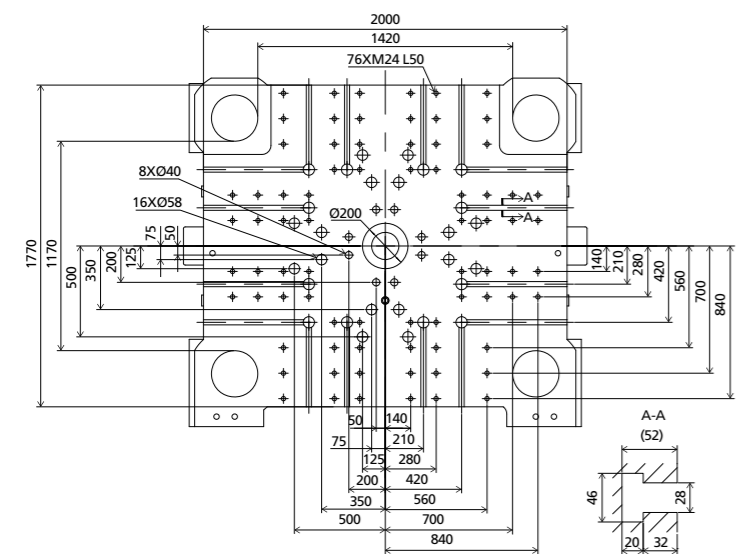
DIMENSIONS JU13000III

Clamping Unit



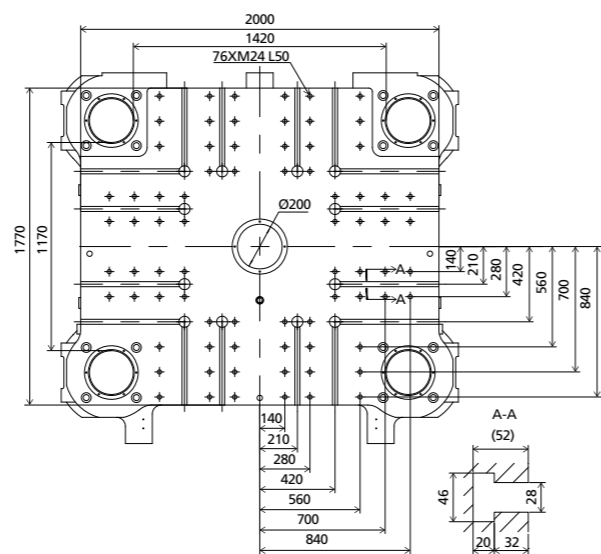
Platen dimensions

Moving platen



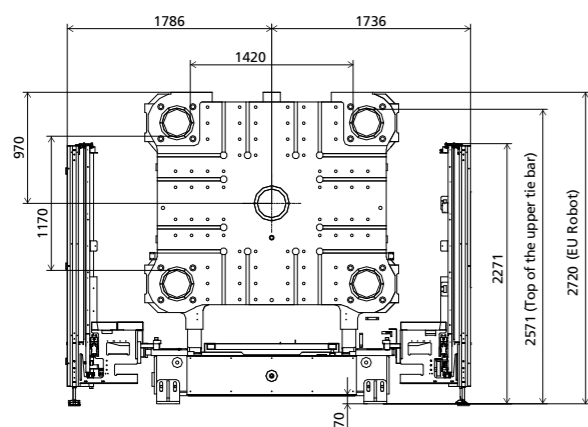
Platen dimensions

Fixed platen



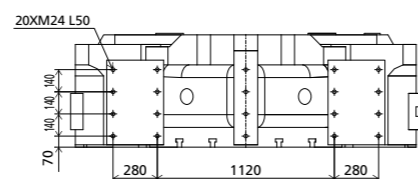
Robot

Mechanical interface

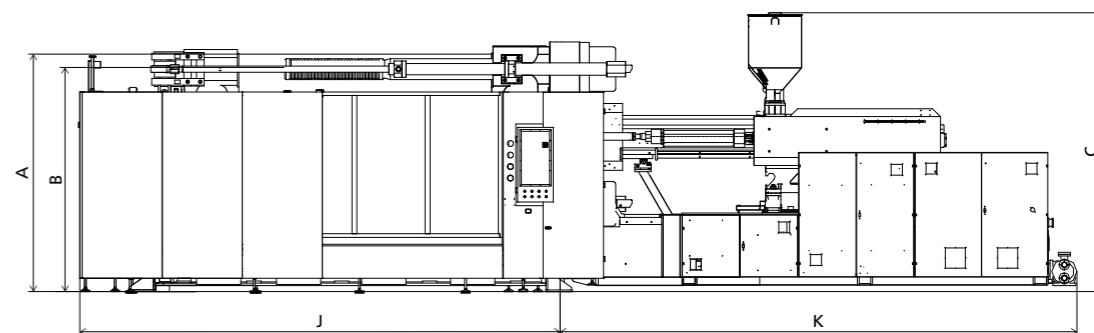


Robot

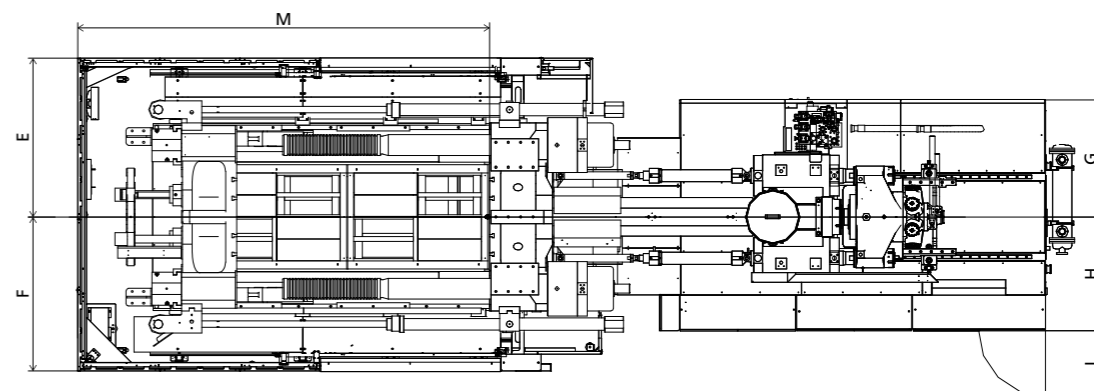
Top view fixed platen



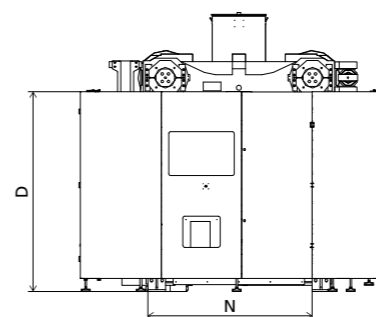
Front view



Top view



Side view



Standard

	A	B	C	D	E	F	G	H	I	J	K	M	N
6730	2675	2526	3000	2250	1786	1736	1198	1112	544	5409	4689	4639	2050
8930	2675	2526	3725	2250	1786	1736	1228	1172	544	5409	5021	4639	2050
11300	2675	2526	4340	2250	1786	1736	1318	1282	745	5409	5821	4639	2050
17300	2675	2526	4620	2250	1786	1736	1855	1305	850	5409	6114	4639	2050

INJECTION UNIT
DIMENSIONS (mm)

We reserve the right to make changes as a result of further technical advantages.

SPECIFICATION JU14000III

SPECIFICATIONS
INJECTION UNIT

	6730	8930	JU14000III				17300										
			11300	14000	1460×1360	1450	17300										
CLAMPING UNIT																	
Clamping force	kN			14000				kN									
Dist. between tie bars (H×V)	mm			1460×1360				mm									
Mold height max	mm			1450				mm									
Mold height min	mm			700				mm									
Ejector stroke	mm			400				mm									
Ejector force	kN			330				kN									
Max. daylight	mm			3050				mm									
Mold opening stroke ①	mm			2350/1600				mm									
Max. mold weight ②	t			27				t									
INJECTION UNIT																	
		A	B	C	D	A	B	C	D	A	B	C					
Screw diameter	mm	90	100	110	120	100	110	120	130	110	120	130	140	130	140	150	mm
Screw L /D ratio	L/D	24.4	22	20	18.3	24.2	22	20.2	18.6	26.2	24	22.2	20.6	24	22.3	20.8	L/D
Injection volume (theoretical)	cm ³	2990	3691	4467	5316	4006	4847	5768	6769	5227	6220	7300	8467	8362	9698	11133	cm ³
Injection weight (PS)	g	2721	3359	4065	4837	3645	4410	5249	6160	4756	5661	6643	7705	7610	8825	10131	g
Injection rate	g/s	774	955	1156	1376	762	922	1097	1288	924	1100	1291	1497	1236	1433	1646	g/s
Injection pressure	MPa	193	157	129	109	196	162	136	116	190	159	136	117	186	160	140	MPa
Injection pressure (max)	MPa	222	180	149	125	223	184	155	132	218	183	156	135	211	182	158	MPa
Plasticizing rate (GPPS) ③	g/s	99.4	122	144	169	101	121	140	161	123	142	164	187	168	192	220	g/s
Plasticizing rate (HDPE) ④	g/s	147	180	214	250	147	177	201	231	187	217	210	241	252	283	336	g/s
Screw speed	rpm		150				116				105				102		rpm
OTHERS																	
Pump motor power	kW		112				112				130				167		kW
Heating power	kW		71				83				104				116		kW
Machine dimension (L x W x H)	m		10.61×3.60×3.08				10.93×3.60×3.81				11.60×3.60×4.42				12.25×3.60×4.70		m
Machine weight	t		64				65				68				73		t
Hopper capacity	kg		100				200				400				400		kg
Oil tank	l		780				960				1250				1550		l

NOTE:

① with min. mold height / with max. mold height

② moving platen: 2/3 of max. mold weight

③ Plasticizing capacity (GPPS): GB standard, with application of GPPS plasticizing capacity of 3-zone screws

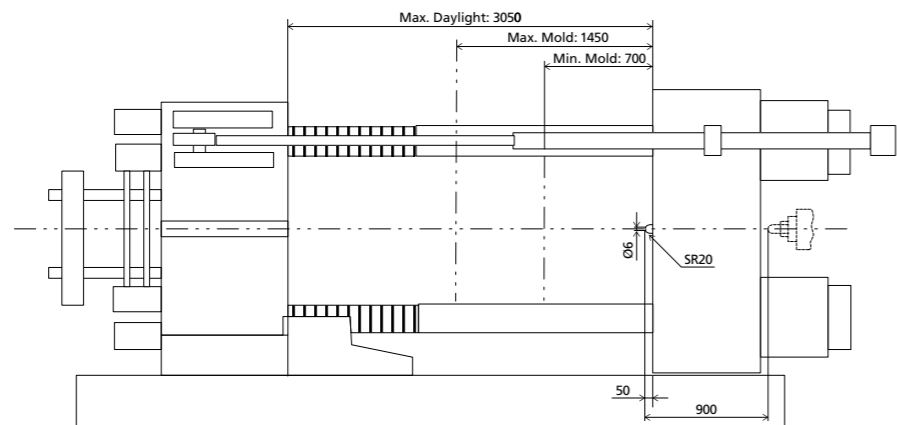
④ Plasticizing capacity (HDPE): Euromap 19, with application of HDPE plasticizing capacity of barrier screws

The above plasticizing capacity is for reference only.

We reserve the right to make changes as a result of further technical advantages.

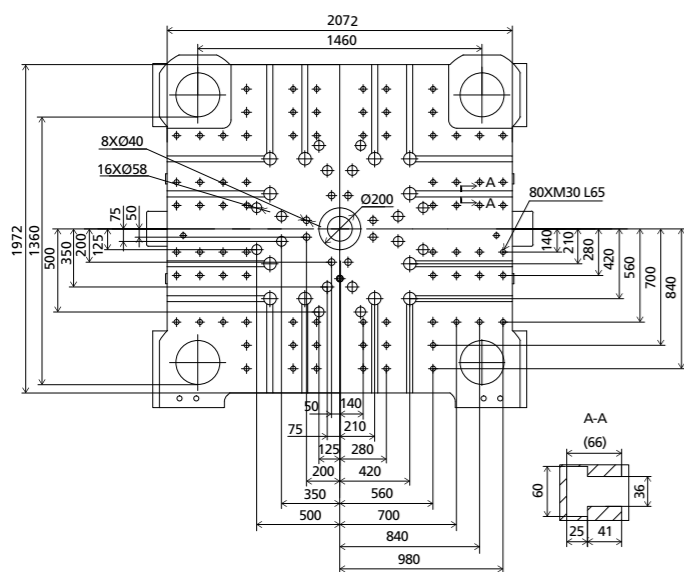
DIMENSIONS JU14000III

Clamping Unit



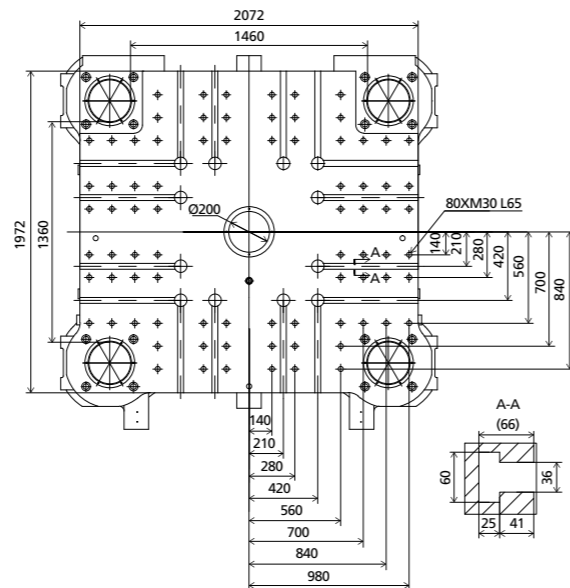
Platen dimensions

Moving platen



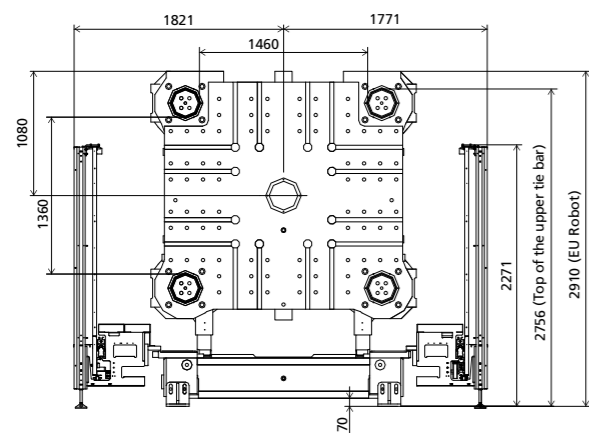
Platen dimensions

Fixed platen



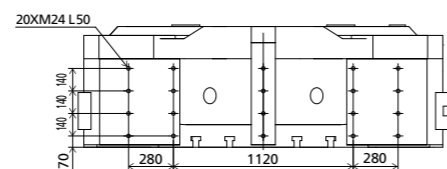
Robot

Mechanical interface

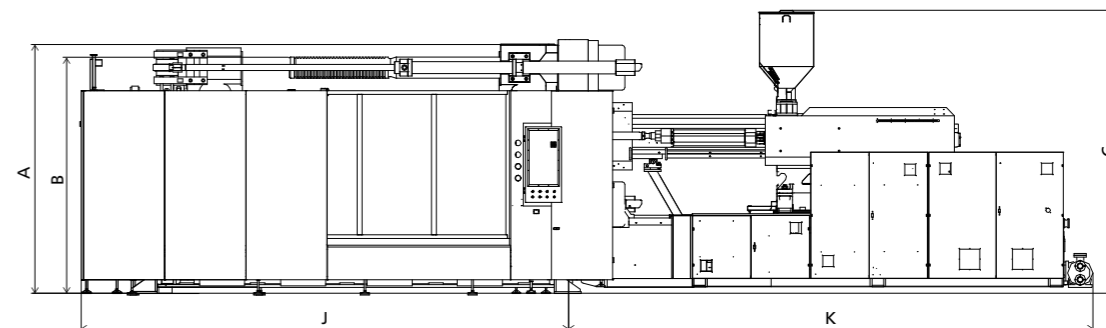


Robot

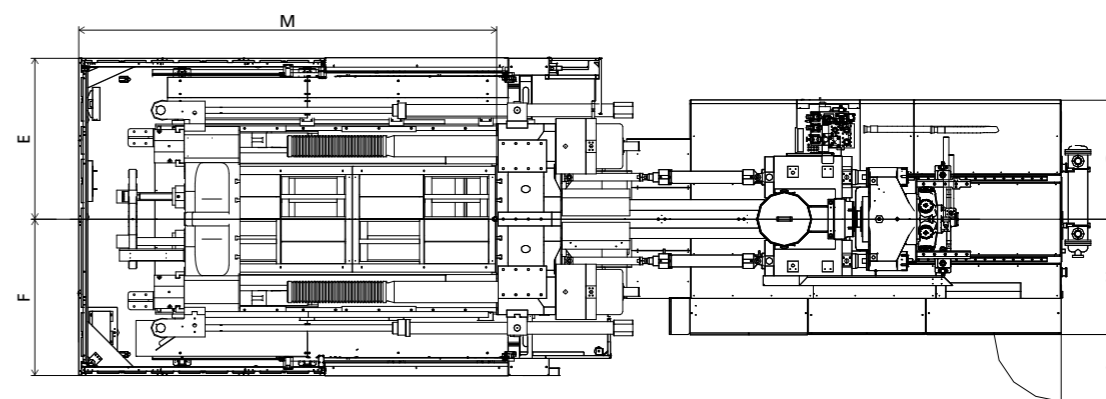
Top view fixed platen



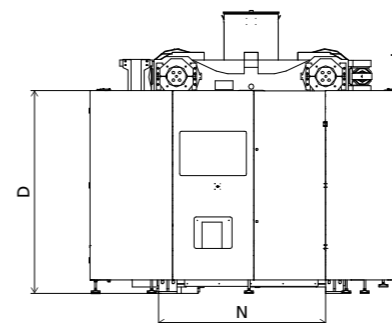
Front view



Top view



Side view



■ Standard

	A	B	C	D	E	F	G	H	I	J	K	M	N
6730	2910	2756	3080	2253	1821	1771	1198	1112	544	5776	4689	4951	2040
8930	2910	2756	3805	2253	1821	1771	1228	1172	544	5776	5021	4951	2040
11300	2910	2756	4420	2253	1821	1771	1318	1282	745	5776	5821	4951	2040
17300	2910	2756	4700	2253	1821	1771	1855	1305	850	5776	6114	4951	2040

INJECTION UNIT
DIMENSIONS (mm)

We reserve the right to make changes as a result of further technical advantages.

SPECIFICATION JU16000III

SPECIFICATIONS
INJECTION UNIT

	8930	11300				17300				JU16000III			
CLAMPING UNIT					CLAMPING UNIT								
Clamping force	kN					16000				kN			
Dist. between tie bars (HxV)	mm					1570x1285				mm			
Mold height max	mm					1550				mm			
Mold height min	mm					700				mm			
Ejector stroke	mm					400				mm			
Ejector force	kN					330				kN			
Max. daylight	mm					3250				mm			
Mold opening stroke ①	mm					2550/1700				mm			
Max. mold weight ②	t					33				t			
INJECTION UNIT					INJECTION UNIT								
		A	B	C	D	A	B	C	D	A	B	C	
Screw diameter	mm	100	110	120	130	110	120	130	140	130	140	150	mm
Screw L /D ratio	L/D	24.2	22	20.2	18.6	26.2	24	22.2	20.6	24	22.3	20.8	L/D
Injection volume (theoretical)	cm ³	4006	4847	5768	6769	5227	6220	7300	8467	8362	9698	11133	cm ³
Injection weight (PS)	g	3645	4410	5249	6160	4756	5661	6643	7705	7610	8825	10131	g
Injection rate	g/s	894	1081	1287	1511	924	1100	1291	1497	1236	1433	1646	g/s
Injection pressure	MPa	196	162	136	116	190	159	136	117	186	160	140	MPa
Injection pressure (max)	MPa	223	184	155	132	218	183	156	135	211	182	158	MPa
Plasticizing rate (GPPS) ③	g/s	110	133	154	177	123	142	164	187	168	192	220	g/s
Plasticizing rate (HDPE) ④	g/s	161	193	220	253	187	217	210	241	252	283	336	g/s
Screw speed	rpm	127				105				102			rpm
OTHERS					OTHERS								
Pump motor power	kW	130				130				167			kW
Heating power	kW	83				104				116			kW
Machine dimension (L x W x H)	m	11.13x3.77x3.78				11.80x3.77x4.40				12.38x3.77x4.68			m
Machine weight	t	75				78				82			t
Hopper capacity	kg	200				400				400			kg
Oil tank	l	960				1250				1550			l

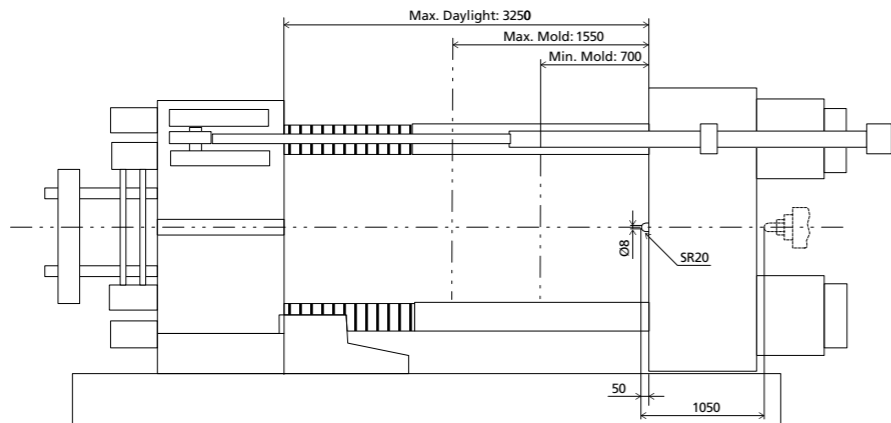
NOTE:

- ① with min. mold height / with max. mold height
 - ② moving platen: 2/3 of max. mold weight
 - ③ Plasticizing capacity (GPPS): GB standard, with application of GPPS plasticizing capacity of 3-zone screws
 - ④ Plasticizing capacity (HDPE): Euromap 19, with application of HDPE plasticizing capacity of barrier screws
- The above plasticizing capacity is for reference only.

We reserve the right to make changes as a result of further technical advantages.

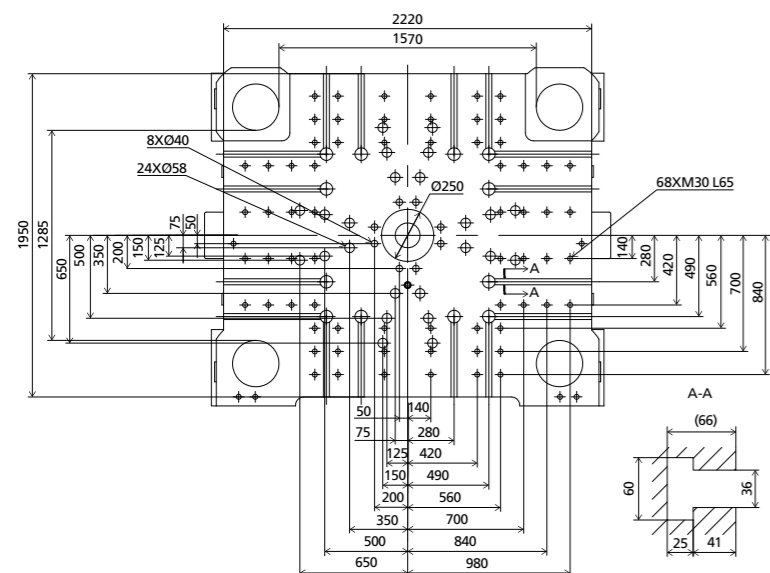
DIMENSIONS JU16000III

Clamping Unit



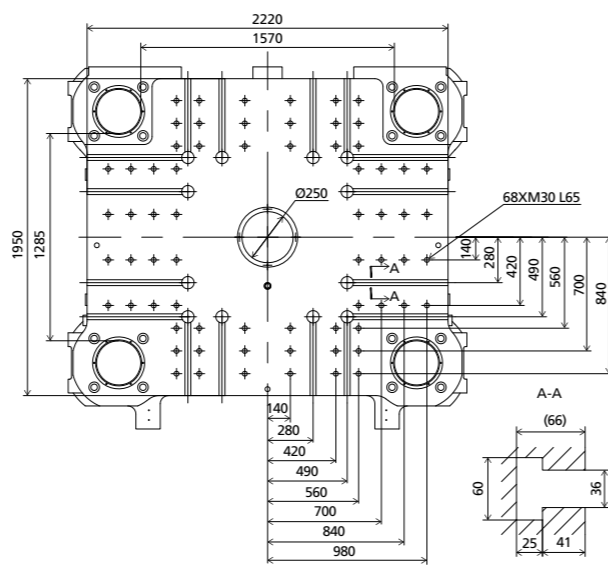
Platen dimensions

Moving platen



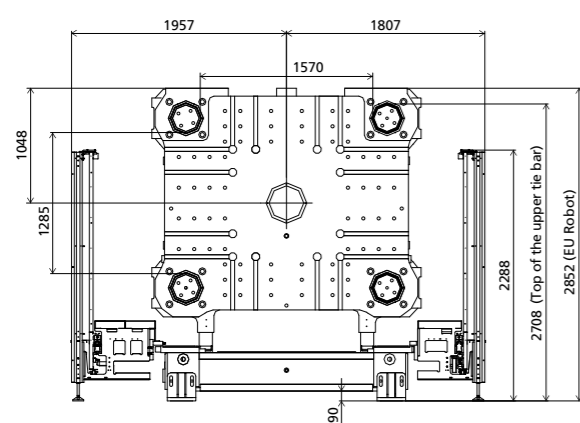
Platen dimensions

Fixed platen



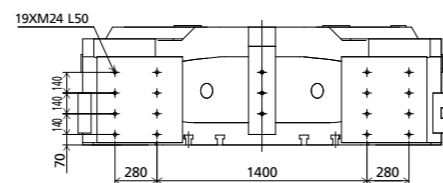
Robot

Mechanical interface

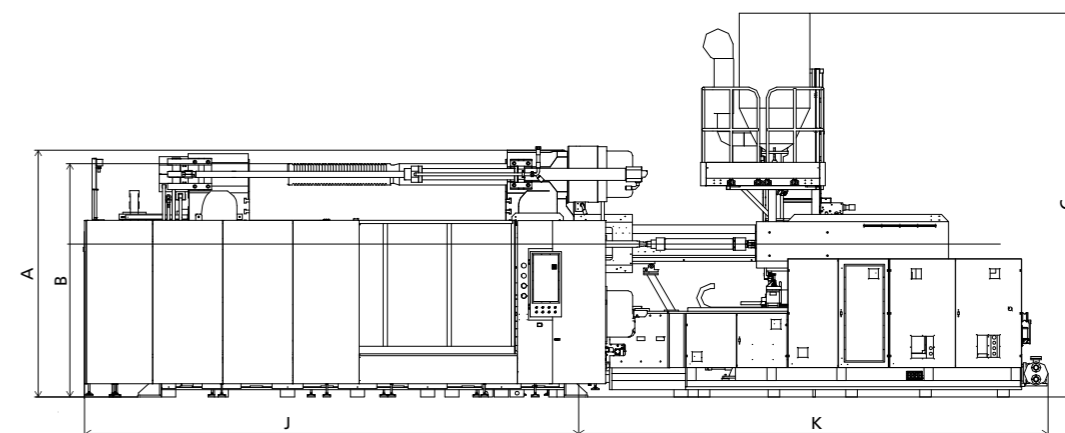


Robot

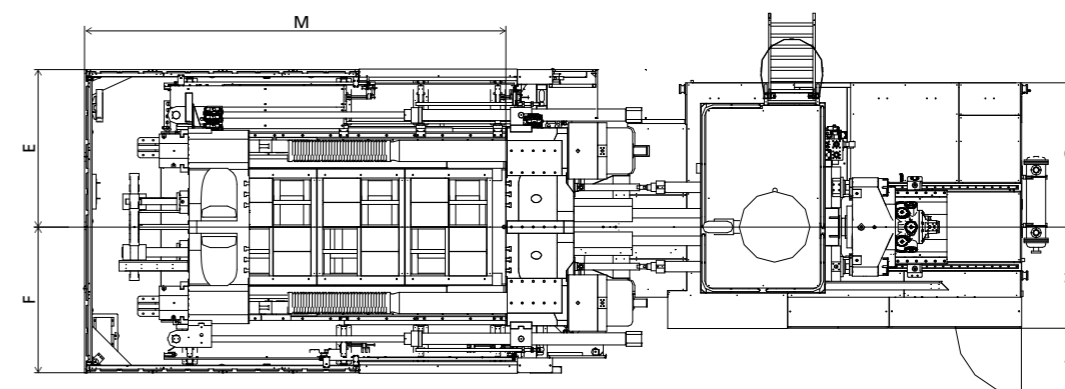
Top view fixed platen



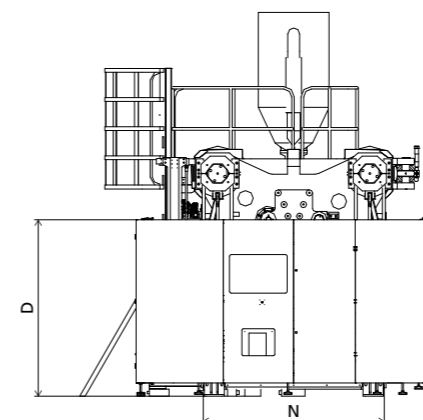
Front view



Top view



Side view



Standard

	A	B	C	D	E	F	G	H	I	J	K	M	N
8930	2852	2708	3780	2270	1957	1807	1228	1102	675	5976	5021	5121	2170
11300	2852	2708	4395	2270	1957	1807	1318	1282	745	5976	5821	5121	2170
17300	2852	2708	4675	2270	1957	1807	1855	1305	850	5976	6051	5121	2170

INJECTION UNIT
DIMENSIONS (mm)

We reserve the right to make changes as a result of further technical advantages.

SPECIFICATION JU18500III

SPECIFICATIONS
INJECTION UNIT

	11300	JU18500III				17300	22300	32300										
CLAMPING UNIT																		
Clamping force	kN					18500			kN									
Dist. between tie bars (HxV)	mm					1870x1425			mm									
Mold height max	mm					1600			mm									
Mold height min	mm					750			mm									
Ejector stroke	mm					450			mm									
Ejector force	kN					450			kN									
Max. daylight	mm					3350			mm									
Mold opening stroke ①	mm					2600/1750			mm									
Max. mold weight ②	t					40			t									
INJECTION UNIT																		
		A	B	C	D	A	B	C	D	A	B							
Screw diameter	mm	110	120	130	140	130	140	150		140	150	160	170	160	170	mm		
Screw L /D ratio	L/D	26.2	24	22.2	20.6	24	22.3	20.8		24	22.4	21	19.8	24	22.6	L/D		
Injection volume (theoretical)	cm ³	5227	6220	7300	8467	8362	9698	11133		10468	12017	13672	15435	17492	19747	cm ³		
Injection weight (PS)	g	4756	5661	6643	7705	7610	8825	10131		9526	10935	12442	14046	15918	17970	g		
Injection rate	g/s	924	1100	1291	1497	1236	1433	1646		1379	1583	1801	2033	1590	1795	g/s		
Injection pressure	MPa	190	159	136	117	186	160	140		185	161	142	126	161	142	MPa		
Injection pressure (max)	MPa	218	183	156	135	211	182	158		211	184	162	143	181	160	MPa		
Plasticizing rate (GPPS) ③	g/s	123	142	164	187	168	192	220		155	176	196	222	--	--	g/s		
Plasticizing rate (HDPE) ④	g/s	187	217	210	241	252	283	336		243	294	303	334	280	310	g/s		
Screw speed	rpm	105				102				85				72				rpm
OTHERS																		
Pump motor power	kW	130				167				185				185				kW
Heating power	kW	104				116				133				174				kW
Machine dimension (L x W x H)	m	12.13x4.15x4.60				12.51x4.15x4.88				12.75x4.15x4.86				13.74x4.15x4.87				m
Machine weight	t	92				96				101				105				t
Hopper capacity	kg	400				400				400				400				kg
Oil tank	l	1250				1550				1720				1720				l

NOTE:

① with min. mold height / with max. mold height

② moving platen: 2/3 of max. mold weight

③ Plasticizing capacity (GPPS): GB standard, with application of GPPS plasticizing capacity of 3-zone screws

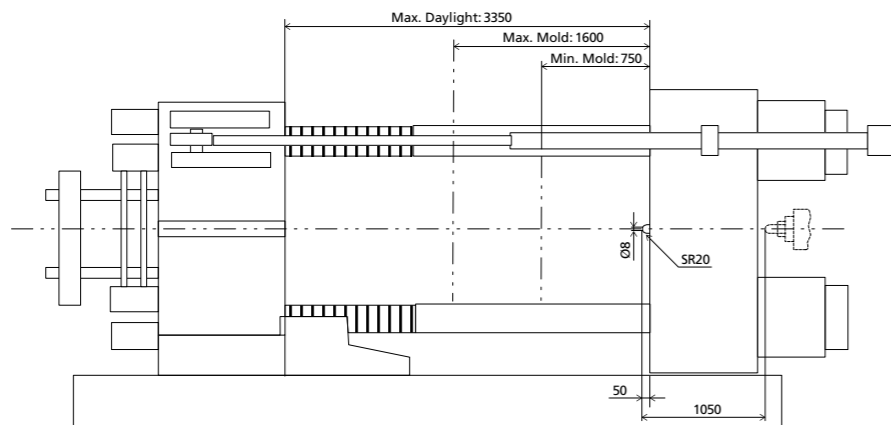
④ Plasticizing capacity (HDPE): Euromap 19, with application of HDPE plasticizing capacity of barrier screws

The above plasticizing capacity is for reference only.

We reserve the right to make changes as a result of further technical advantages.

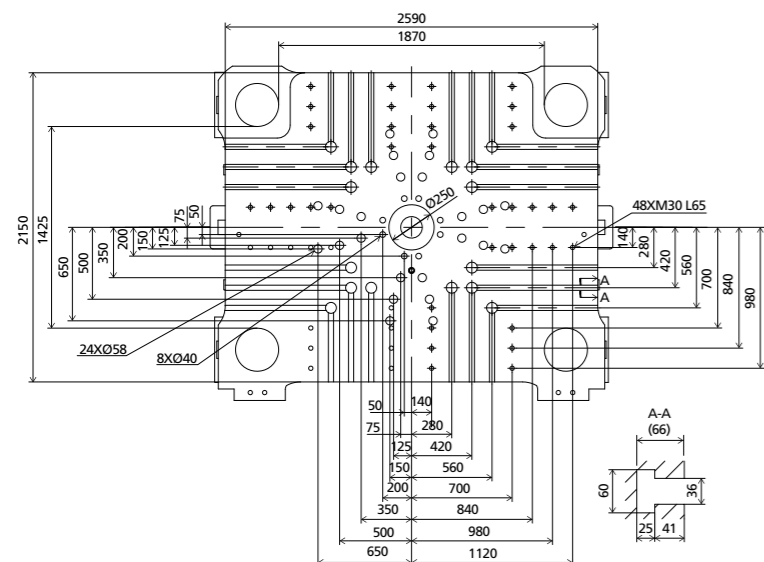
DIMENSIONS JU18500III

Clamping Unit



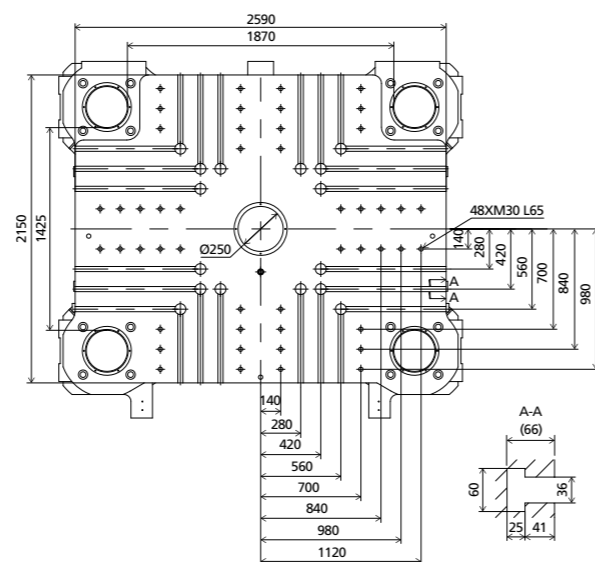
Platen dimensions

Moving platen



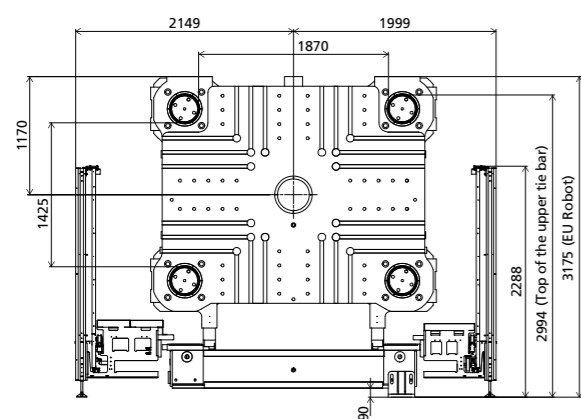
Platen dimensions

Fixed platen



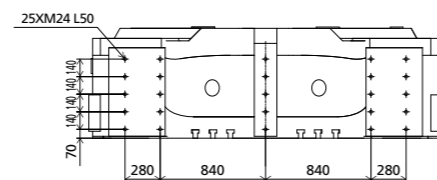
Robot

Mechanical interface

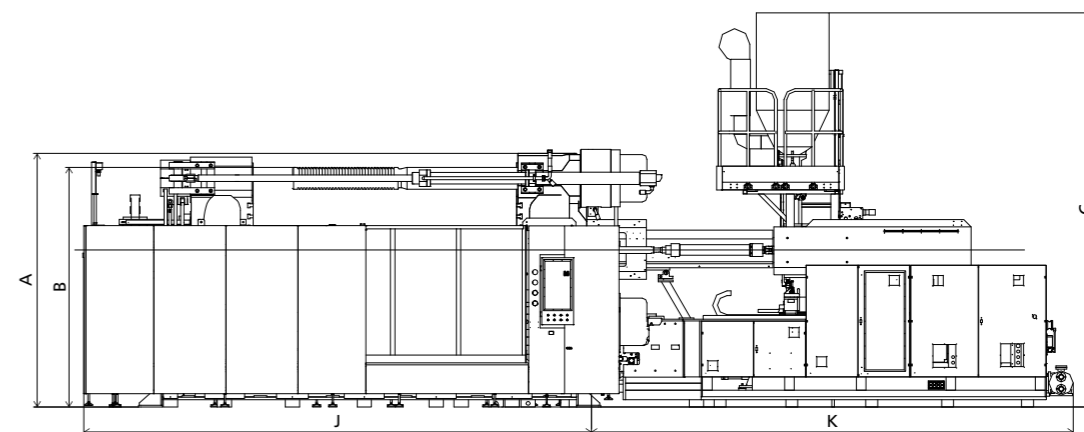


Robot

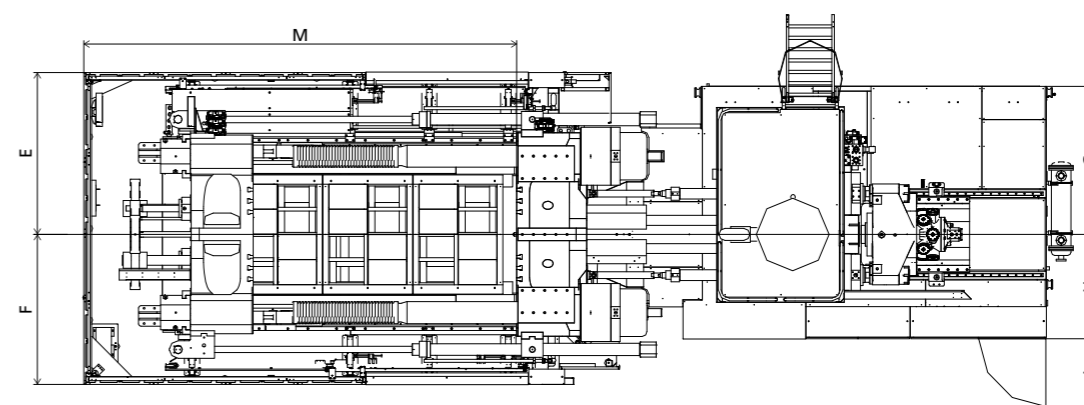
Top view fixed platen



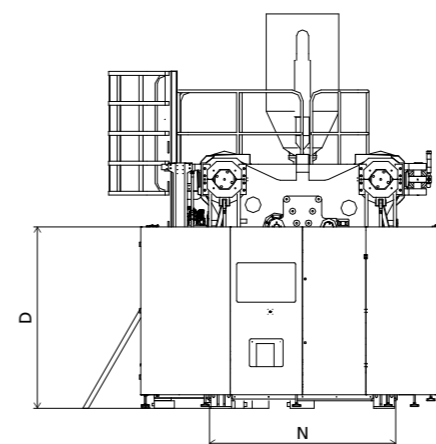
Front view



Top view



Side view



■ Standard

	A	B	C	D	E	F	G	H	I	J	K	M	N
11300	3175	2994	4595	2270	2149	1999	1318	1282	745	6306	5821	5321	2390
17300	3175	2994	4875	2270	2149	1999	1855	1305	850	6306	5971	5321	2390
22300	3175	2994	4860	2270	2149	1999	1925	1435	850	6306	6443	5321	2390
32300	3175	2994	4870	2270	2149	1999	1925	1435	850	6306	7431	5321	2390

INJECTION UNIT
DIMENSIONS (mm)

We reserve the right to make changes as a result of further technical advantages.

SPECIFICATION JU21000III

SPECIFICATIONS
INJECTION UNIT

	11300	17300	JU21000III				22300	32300	40300									
CLAMPING UNIT																		
Clamping force	kN					21000			kN	Clamping force								
Dist. between tie bars (HxV)	mm					1800x1600			mm	Dist. between tie bars (HxV)								
Mold height max	mm					1700			mm	Mold height max								
Mold height min	mm					800			mm	Mold height min								
Ejector stroke	mm					450			mm	Ejector stroke								
Ejector force	kN					450			kN	Ejector force								
Max. daylight	mm					3500			mm	Max. daylight								
Mold opening stroke ①	mm					2700/1800			mm	Mold opening stroke ①								
Max. mold weight ②	t					50			t	Max. mold weight ②								
INJECTION UNIT																		
Screw diameter	mm	A 110	B 120	C 130	D 140	A 130	B 140	C 150	A 140	B 150	C 160	D 170	A 160	B 170	A 170	B 185	mm	Screw diameter
Screw L /D ratio	L/D	26.2	24	22.2	20.6	24	22.3	20.8	24	22.4	21	19.8	24	22.6	23.5	21.6	L/D	Screw L /D ratio
Injection volume (theoretical)	cm ³	5227	6220	7300	8467	8362	9698	11133	10468	12017	13672	15435	17492	19747	23379	27687	cm ³	Injection volume (theoretical)
Injection weight (PS)	g	4756	5661	6643	7705	7610	8825	10131	9526	10935	12442	14046	15918	17970	21275	25195	g	Injection weight (PS)
Injection rate	g/s	1211	1441	1691	1961	1236	1433	1646	1379	1583	1801	2033	1590	1795	1530	1811	g/s	Injection rate
Injection pressure	MPa	190	159	136	117	186	160	140	185	161	142	126	161	142	159	134	MPa	Injection pressure
Injection pressure (max)	MPa	218	183	156	135	211	182	158	211	184	162	143	181	160	180	152	MPa	Injection pressure (max)
Plasticizing rate (GPPS) ③	g/s	146	169	195	223	168	192	220	155	176	196	222	--	--	--	--	g/s	Plasticizing rate (GPPS) ③
Plasticizing rate (HDPE) ④	g/s	223	259	250	287	252	283	336	243	294	303	334	280	310	309	320	g/s	Plasticizing rate (HDPE) ④
Screw speed	rpm		125				102			85				72		70	rpm	Screw speed
OTHERS																		
Pump motor power	kW		167				167			185				185		205	kW	Pump motor power
Heating power	kW		104				116			133				174		215	kW	Heating power
Machine dimension (L x W x H)	m		12.30x5.24x4.64				12.76x5.24x4.92			12.92x5.24x4.90				13.90x5.24x4.91		14.42x5.24x4.95	m	Machine dimension (L x W x H)
Machine weight	t		101				105			109				113		121	t	Machine weight
Hopper capacity	kg		400				400			400				400		400	kg	Hopper capacity
Oil tank	l		1250				1550			1720				1720		2390	l	Oil tank

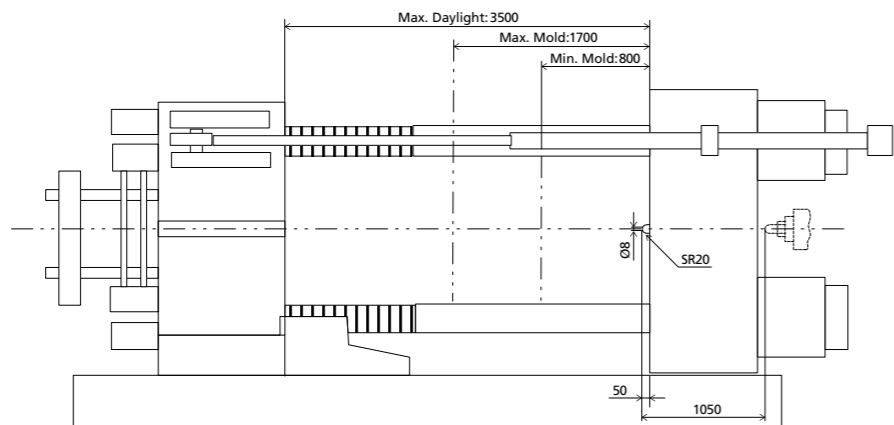
NOTE:

- ① with min. mold height / with max. mold height
 - ② moving platen: 2/3 of max. mold weight
 - ③ Plasticizing capacity (GPPS): GB standard, with application of GPPS plasticizing capacity of 3-zone screws
 - ④ Plasticizing capacity (HDPE): Euromap 19, with application of HDPE plasticizing capacity of barrier screws
- The above plasticizing capacity is for reference only.

We reserve the right to make changes as a result of further technical advantages.

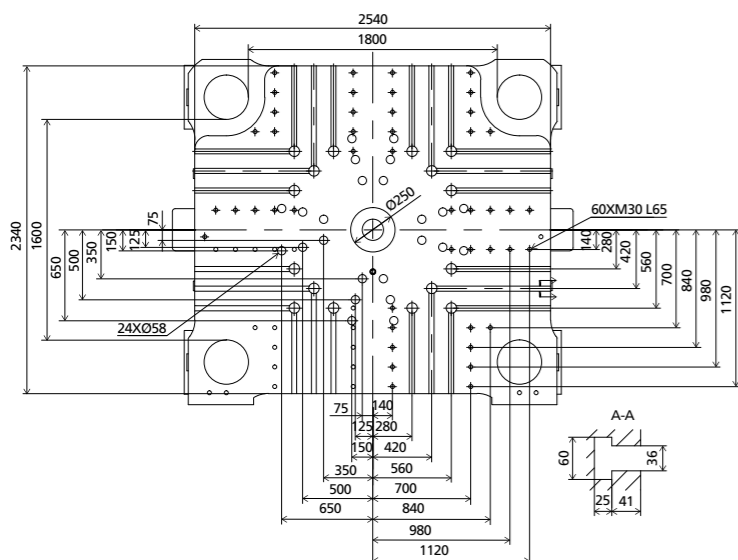
DIMENSIONS JU21000III

Clamping Unit



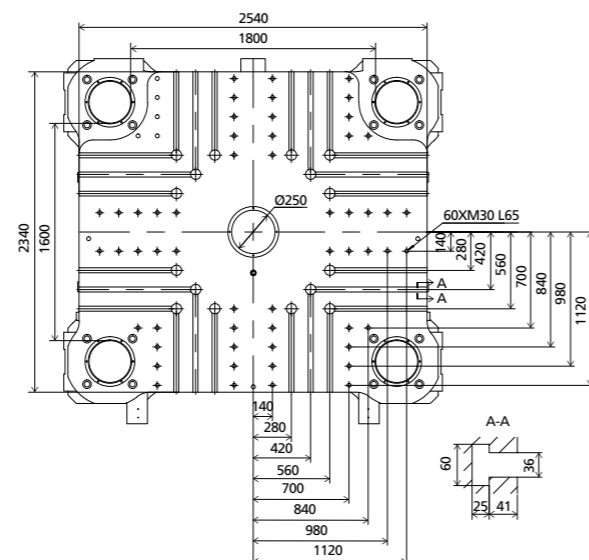
Platen dimensions

Moving platen



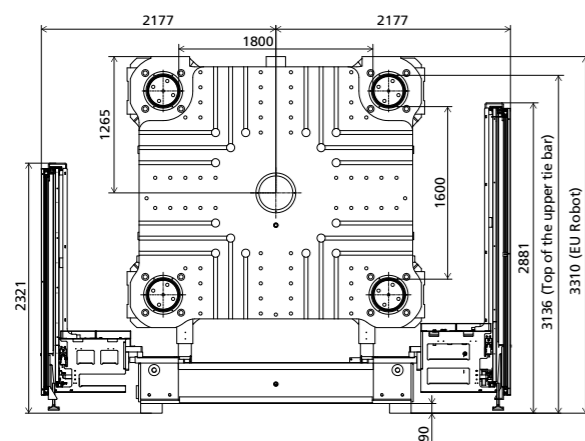
Platen dimensions

Fixed platen



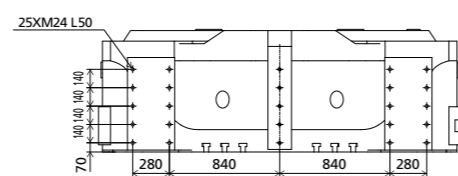
Robot

Mechanical interface

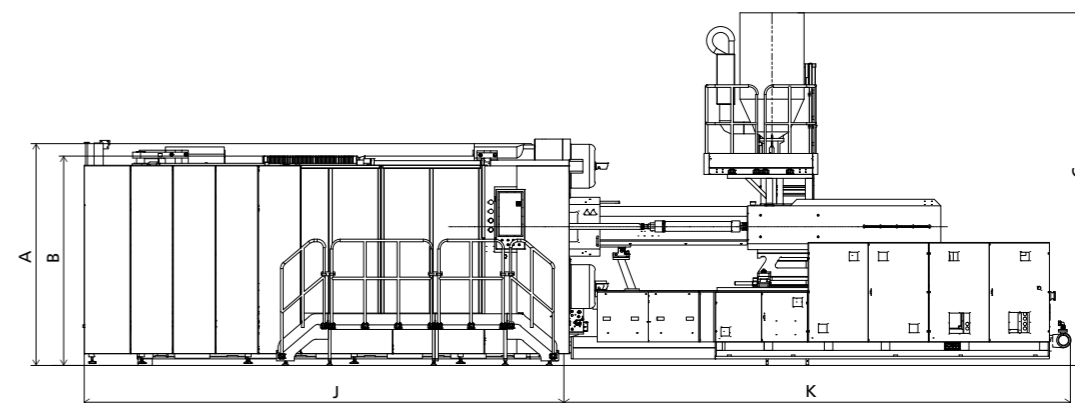


Robot

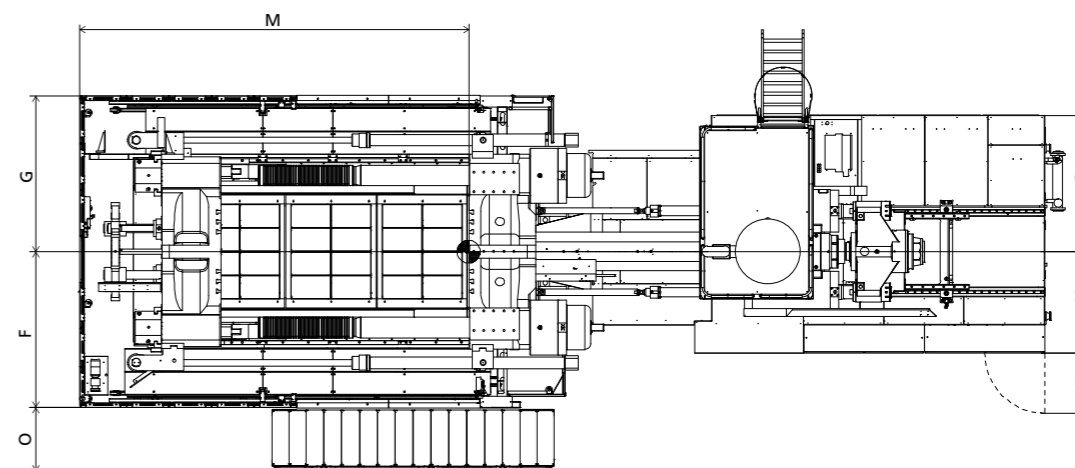
Top view fixed platen



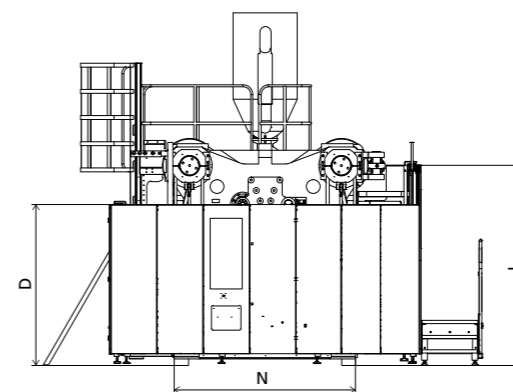
Front view



Top view



Side view



Standard

	A	B	C	D	E	F	G	H	I	J	K	L	M	N	O
11300	3310	3163	4635	2270	2177	2177	1318	1282	745	6469	5821	2830	5490	2510	864
17300	3310	3163	4915	2270	2177	2177	1855	1305	850	6469	6051	2830	5490	2510	864
22300	3310	3163	4900	2270	2177	2177	1925	1435	850	6469	6443	2830	5490	2510	864
32300	3310	3163	4910	2270	2177	2177	1925	1435	850	6469	7431	2830	5490	2510	864
40300	3310	3163	4950	2270	2177	2177	1965	1515	850	6469	7938	2830	5490	2510	864

INJECTION UNIT
DIMENSIONS (mm)

We reserve the right to make changes as a result of further technical advantages.

SPECIFICATION JU24000III

SPECIFICATIONS
INJECTION UNIT

	17300	22300	32300	JU24000III 40300	
CLAMPING UNIT					CLAMPING UNIT
Clamping force	kN			24000	kN
Dist. between tie bars (HxV)	mm			2020x1620	mm
Mold height max	mm			1800	mm
Mold height min	mm			800	mm
Ejector stroke	mm			500	mm
Ejector force	kN			450	kN
Max. daylight	mm			3800	mm
Mold opening stroke ①	mm			3000/2000	mm
Max. mold weight ②	t			59	t
INJECTION UNIT					INJECTION UNIT
Screw diameter	mm	A 130 B 140 C 150	A 140 B 150 C 160 D 170	A 160 B 170	A 170 B 185
Screw L /D ratio	L/D	24 22.3 20.8	24 22.4 21 19.8	24 22.6	23.5 21.6
Injection volume (theoretical)	cm ³	8362 9698 11133	10468 12017 13672 15435	17492 19747	23379 27687
Injection weight (PS)	g	7610 8825 10131	9526 10935 12442 14046	15918 17970	21275 25195
Injection rate	g/s	1375 1595 1831	1379 1583 1801 2033	1590 1795	1530 1811
Injection pressure	MPa	186 160 140	185 161 142 126	161 142	159 134
Injection pressure (max)	MPa	211 182 158	211 184 162 143	181 160	180 152
Plasticizing rate (GPPS) ③	g/s	188 215 246	155 176 196 222	-- --	-- --
Plasticizing rate (HDPE) ④	g/s	282 316 376	243 294 303 334	280 310	309 320
Screw speed	rpm	114	85	72	70
OTHERS					OTHERS
Pump motor power	kW	185	185	185	205
Heating power	kW	116	133	174	215
Machine dimension (L x W x H)	m	13.42x5.46x5.04	13.58x5.46x5.02	14.57x5.46x5.03	15.14x5.46x5.07
Machine weight	t	125	129	133	140
Hopper capacity	kg	400	400	400	400
Oil tank	l	1550	1720	1720	2390

NOTE:

① with min. mold height / with max. mold height

② moving platen: 2/3 of max. mold weight

③ Plasticizing capacity (GPPS): GB standard, with application of GPPS plasticizing capacity of 3-zone screws

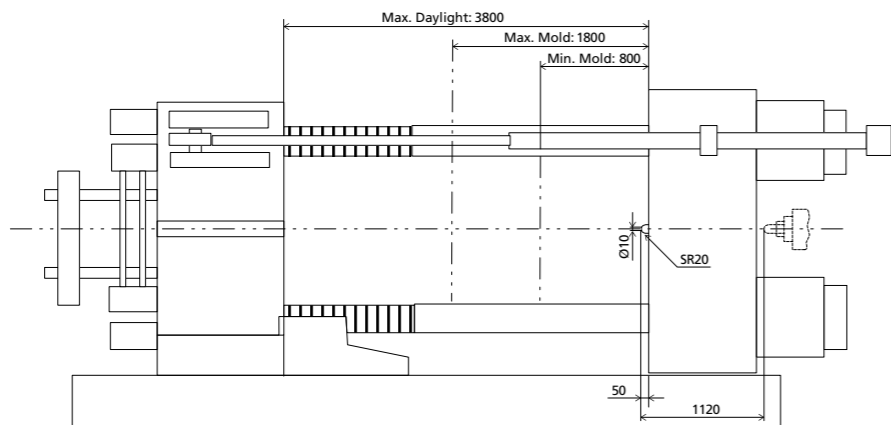
④ Plasticizing capacity (HDPE): Euromap 19, with application of HDPE plasticizing capacity of barrier screws

The above plasticizing capacity is for reference only.

We reserve the right to make changes as a result of further technical advantages.

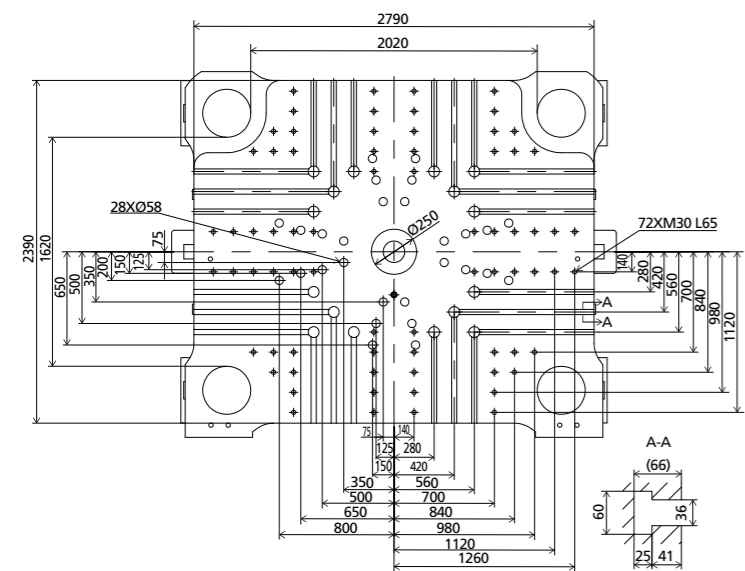
DIMENSIONS JU24000III

Clamping Unit



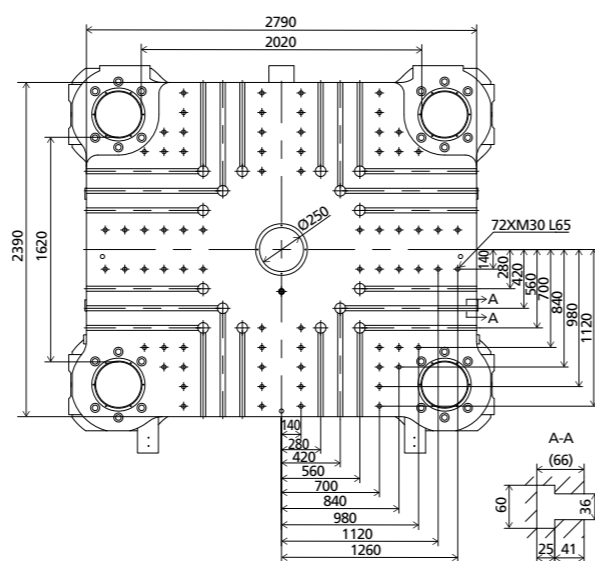
Platen dimensions

Moving platen



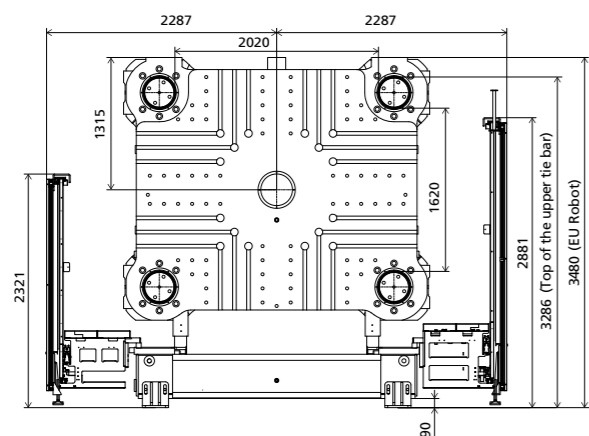
Platen dimensions

Fixed platen



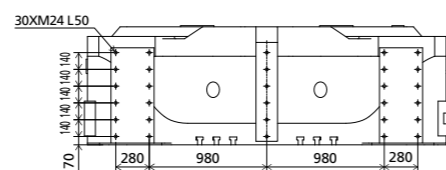
Robot

Mechanical interface

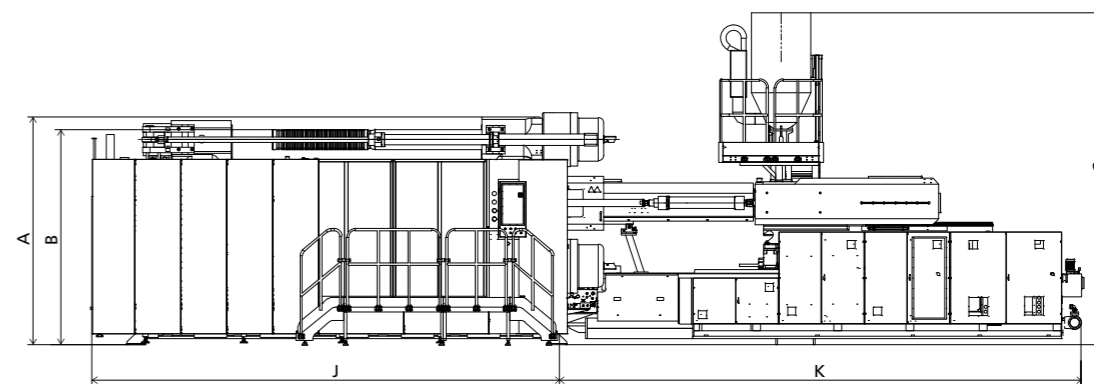


Robot

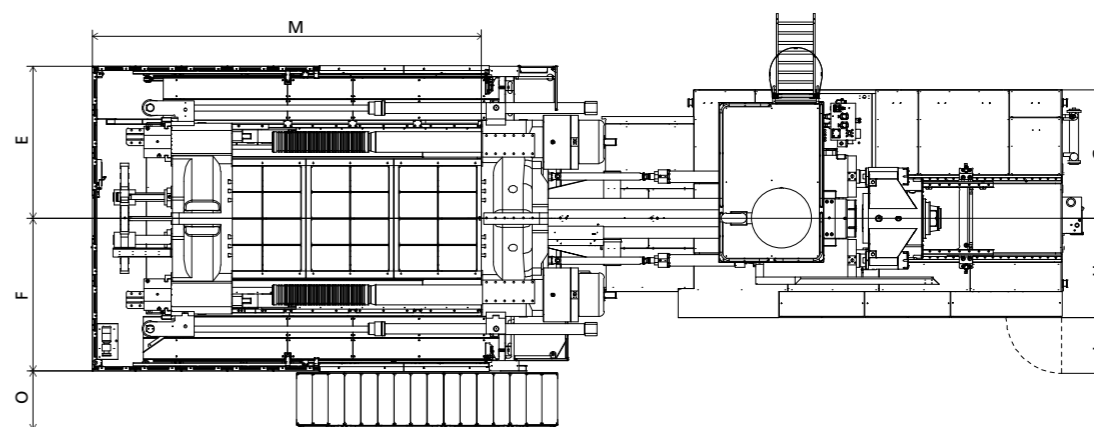
Top view fixed platen



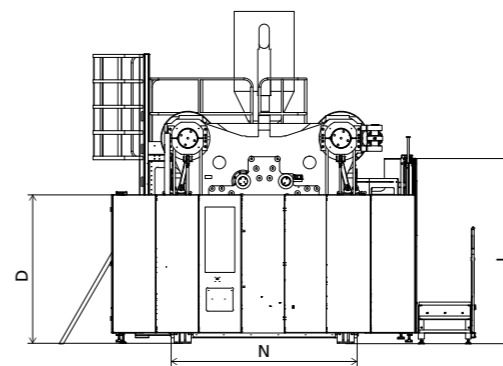
Front view



Top view



Side view



Standard

	A	B	C	D	E	F	G	H	I	J	K	L	M	N	O
17300	3480	3136	5035	2270	2287	2287	1855	1305	850	7125	6051	2830	5936	2750	864
22300	3480	3136	5020	2270	2287	2287	1925	1435	850	7125	6443	2830	5936	2750	864
32300	3480	3136	5030	2270	2287	2287	1925	1435	850	7125	7431	2830	5936	2750	864
40300	3480	3136	5070	2270	2287	2287	1965	1515	850	7125	7938	2830	5936	2750	864

INJECTION UNIT
DIMENSIONS (mm)

We reserve the right to make changes as a result of further technical advantages.

SPECIFICATION JU28000III

SPECIFICATIONS
INJECTION UNIT

	22300	32300	40300	JU28000III		50300	62300						
CLAMPING UNIT								CLAMPING UNIT					
Clamping force	kN					28000	kN	Clamping force					
Dist. between tie bars (HxV)	mm					2185x1755	mm	Dist. between tie bars (HxV)					
Mold height max	mm					2000	mm	Mold height max					
Mold height min	mm					800	mm	Mold height min					
Ejector stroke	mm					500	mm	Ejector stroke					
Ejector force	kN					450	kN	Ejector force					
Max. daylight	mm					4100	mm	Max. daylight					
Mold opening stroke ①	mm					3300/2100	mm	Mold opening stroke ①					
Max. mold weight ②	t					66	t	Max. mold weight ②					
INJECTION UNIT								INJECTION UNIT					
Screw diameter	mm	A 140	B 150	C 160	D 170	A 160	B 170	A 170	B 185	200	220	mm	Screw diameter
Screw L /D ratio	L/D	24	22.4	21	19.8	24	22.6	23.5	21.6	20	20.5	L/D	Screw L /D ratio
Injection volume (theoretical)	cm ³	10468	12017	13672	15435	17492	19747	23379	27687	35186	45616	cm ³	Injection volume (theoretical)
Injection weight (PS)	g	9526	10935	12442	14046	15918	17970	21275	25195	32019	41510	g	Injection weight (PS)
Injection rate	g/s	1460	1676	1907	2153	1684	1901	1530	1811	2314	2492	g/s	Injection rate
Injection pressure	MPa	185	161	142	126	161	142	159	134	128	119	MPa	Injection pressure
Injection pressure (max)	MPa	211	184	162	143	181	160	180	152	143	134	MPa	Injection pressure (max)
Plasticizing rate (GPPS) ③	g/s	171.2	194.7	216	245	--	--	--	--	--	--	g/s	Plasticizing rate (GPPS) ③
Plasticizing rate (HDPE) ④	g/s	268.6	324.5	335	369	315	349	309	320	380	370	g/s	Plasticizing rate (HDPE) ④
Screw speed	rpm	94				81		70		70	53	rpm	Screw speed
OTHERS								OTHERS					
Pump motor power	kW	205				205		205		255	255	kW	Pump motor power
Heating power	kW	133				174		215		215	223	kW	Heating power
Machine dimension (L x W x H)	m	14.02x5.60x5.17				15.01x5.60x5.18		15.51x5.60x5.22		15.93x5.60x5.26	16.66x5.60x5.26	m	Machine dimension (L x W x H)
Machine weight	t	153				157		164		169	174	t	Machine weight
Hopper capacity	kg	400				400		400		400	400	kg	Hopper capacity
Oil tank	l	1720				1720		2390		2880	2880	l	Oil tank

NOTE:

① with min. mold height / with max. mold height

② moving platen: 2/3 of max. mold weight

③ Plasticizing capacity (GPPS): GB standard, with application of GPPS plasticizing capacity of 3-zone screws

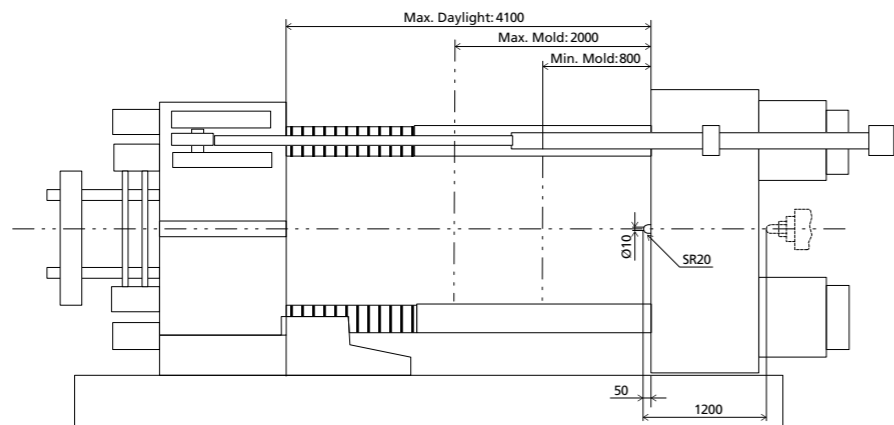
④ Plasticizing capacity (HDPE): Euromap 19, with application of HDPE plasticizing capacity of barrier screws

The above plasticizing capacity is for reference only.

We reserve the right to make changes as a result of further technical advantages.

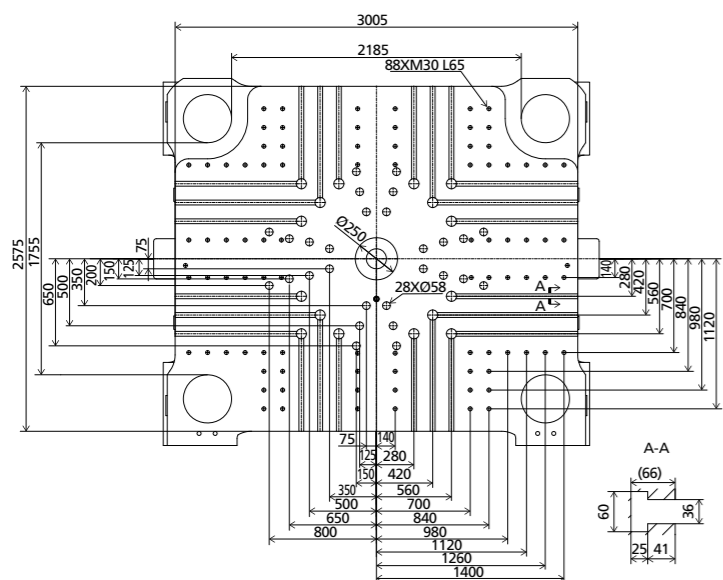
DIMENSIONS JU28000III

Clamping Unit



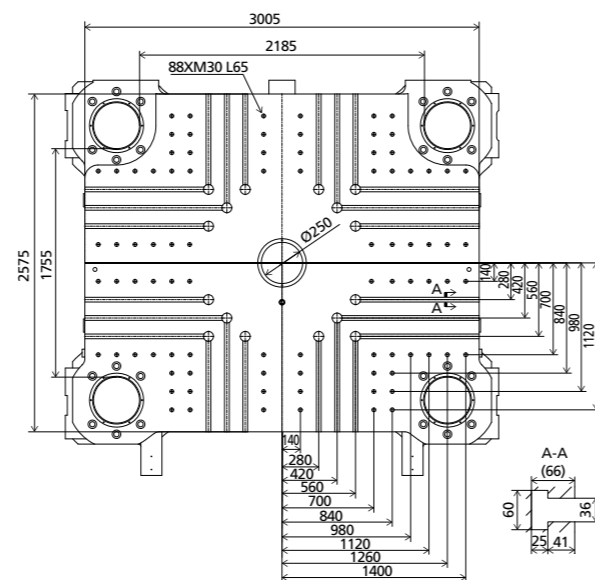
Platen dimensions

Moving platen



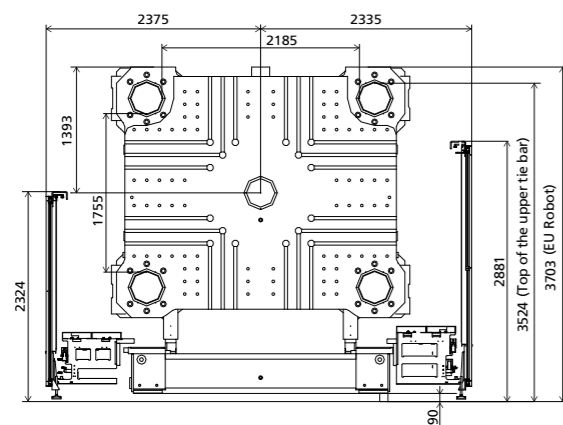
Platen dimensions

Fixed platen



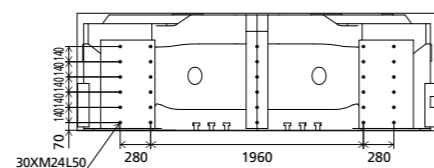
Robot

Mechanical interface

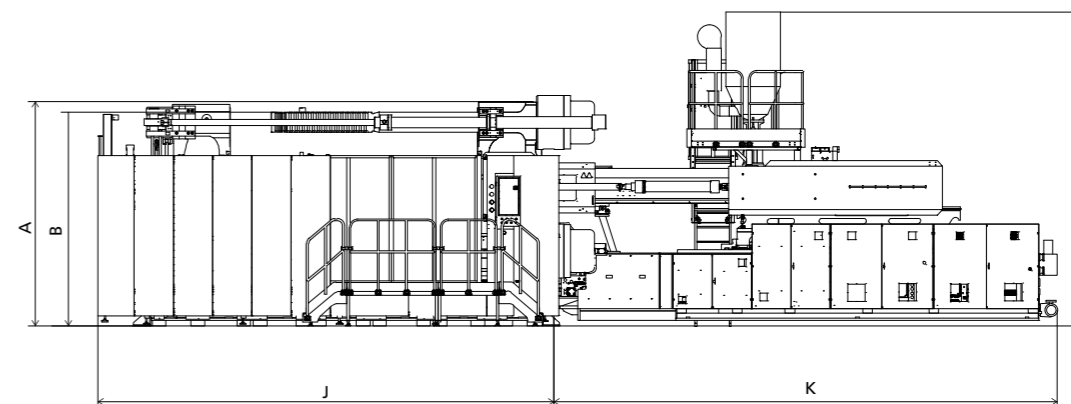


Robot

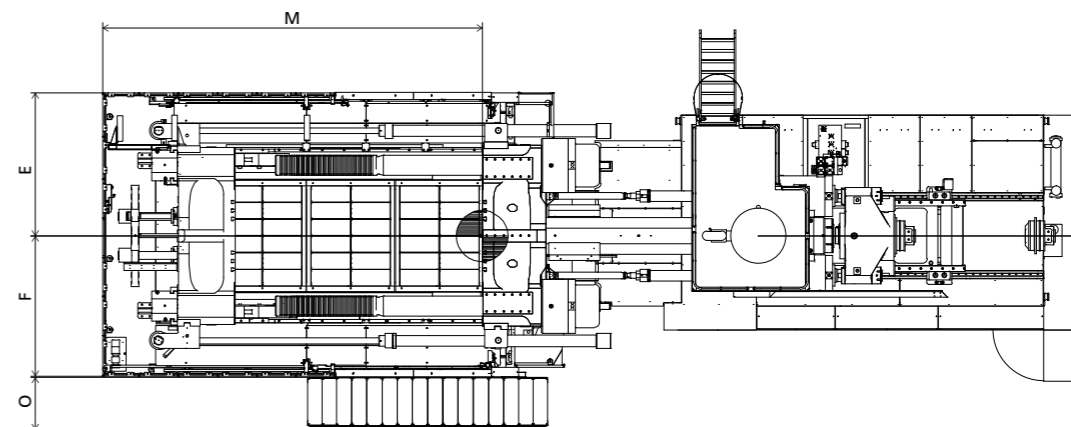
Top view fixed platen



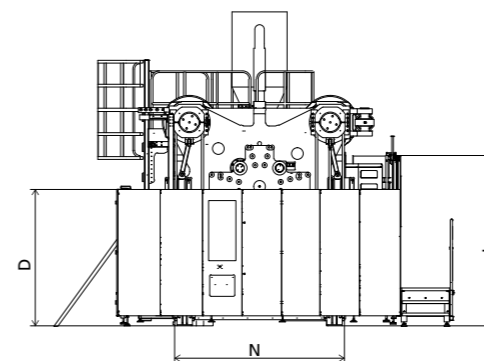
Front view



Top view



Side view



Standard

	A	B	C	D	E	F	G	H	I	J	K	L	M	N	O
22300	3703	3524	5165	2270	2375	2335	1925	1435	850	7570	6443	2830	6300	2817	864
32300	3703	3524	5175	2270	2375	2335	1925	1435	850	7570	7431	2830	6300	2817	864
40300	3703	3524	5215	2270	2375	2335	1965	1515	850	7570	7938	2830	6300	2817	864
50300	3703	3524	5255	2270	2375	2335	2005	1565	850	7570	8355	2830	6300	2817	864
62300	3703	3524	5255	2270	2375	2335	2005	1565	850	7570	8895	2830	6300	2817	864

INJECTION UNIT
DIMENSIONS (mm)

We reserve the right to make changes as a result of further technical advantages.

SPECIFICATION JU33000III

SPECIFICATIONS
INJECTION UNIT

	22300	32300	40300	50300	JU33000III 62300		
CLAMPING UNIT						CLAMPING UNIT	
Clamping force	kN				33000	kN Clamping force	
Dist. between tie bars (H×V)	mm				2270×1900	mm Dist. between tie bars (H×V)	
Mold height max	mm				2000	mm Mold height max	
Mold height min	mm				1000	mm Mold height min	
Ejector stroke	mm				550	mm Ejector stroke	
Ejector force	kN				580	kN Ejector force	
Max. daylight	mm				4200	mm Max. daylight	
Mold opening stroke ①	mm				3200/2200	mm Mold opening stroke ①	
Max. mold weight ②	t				75	t Max. mold weight ②	
INJECTION UNIT						INJECTION UNIT	
Screw diameter	mm	A 140 B 150 C 160 D 170	A 160 B 170	A 170 B 185	200	220	mm Screw diameter
Screw L /D ratio	L/D	24 22.4 21 19.8	24 22.6	23.5 21.6	20	20.5	L/D Screw L /D ratio
Injection volume (theoretical)	cm ³	10468 12017 13672 15435	17492 19747	23379 27687	35186	45616	cm ³ Injection volume (theoretical)
Injection weight (PS)	g	9526 10935 12442 14046	15918 17970	21275 25195	32019	41510	g Injection weight (PS)
Injection rate	g/s	1460 1676 1907 2153	1684 1901	1530 1811	2314	2492	g/s Injection rate
Injection pressure	MPa	185 161 142 126	161 142	159 134	128	119	MPa Injection pressure
Injection pressure (max)	MPa	211 184 162 143	181 160	180 152	143	134	MPa Injection pressure (max)
Plasticizing rate (GPPS) ③	g/s	171.2 194.7 216 245	-- --	-- --	--	--	g/s Plasticizing rate (GPPS) ③
Plasticizing rate (HDPE) ④	g/s	268.6 324.5 335 369	315 349	309 320	380	370	g/s Plasticizing rate (HDPE) ④
Screw speed	rpm	94	81	70	70	53	rpm Screw speed
OTHERS						OTHERS	
Pump motor power	kW	205	205	205	255	255	kW Pump motor power
Heating power	kW	133	174	215	215	223	kW Heating power
Machine dimension (L x W x H)	m	14.42×5.92×5.34	15.41×5.92×5.34	15.92×5.92×5.38	16.33×5.92×5.42	17.07×5.92×5.42	m Machine dimension (L x W x H)
Machine weight	t	177	181	189	194	198	t Machine weight
Hopper capacity	kg	400	400	400	400	400	kg Hopper capacity
Oil tank	l	1720	1720	2390	2880	2880	l Oil tank

NOTE:

① with min. mold height / with max. mold height

② moving platen: 2/3 of max. mold weight

③ Plasticizing capacity (GPPS): GB standard, with application of GPPS plasticizing capacity of 3-zone screws

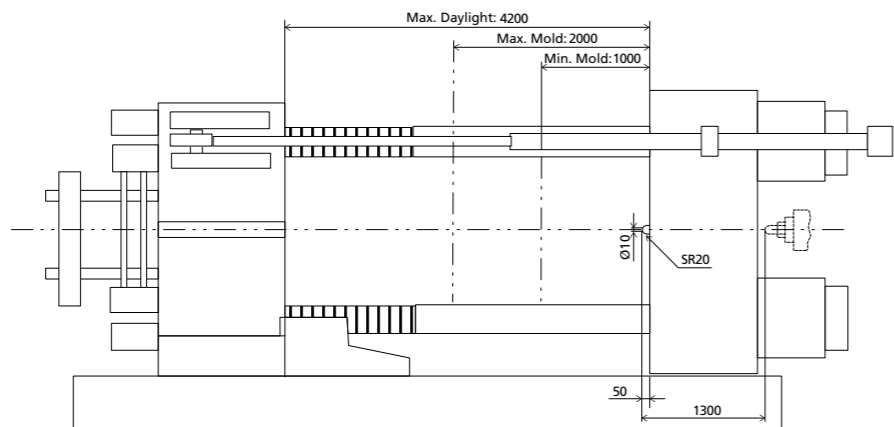
④ Plasticizing capacity (HDPE): Euromap 19, with application of HDPE plasticizing capacity of barrier screws

The above plasticizing capacity is for reference only.

We reserve the right to make changes as a result of further technical advantages.

DIMENSIONS JU33000III

Clamping Unit

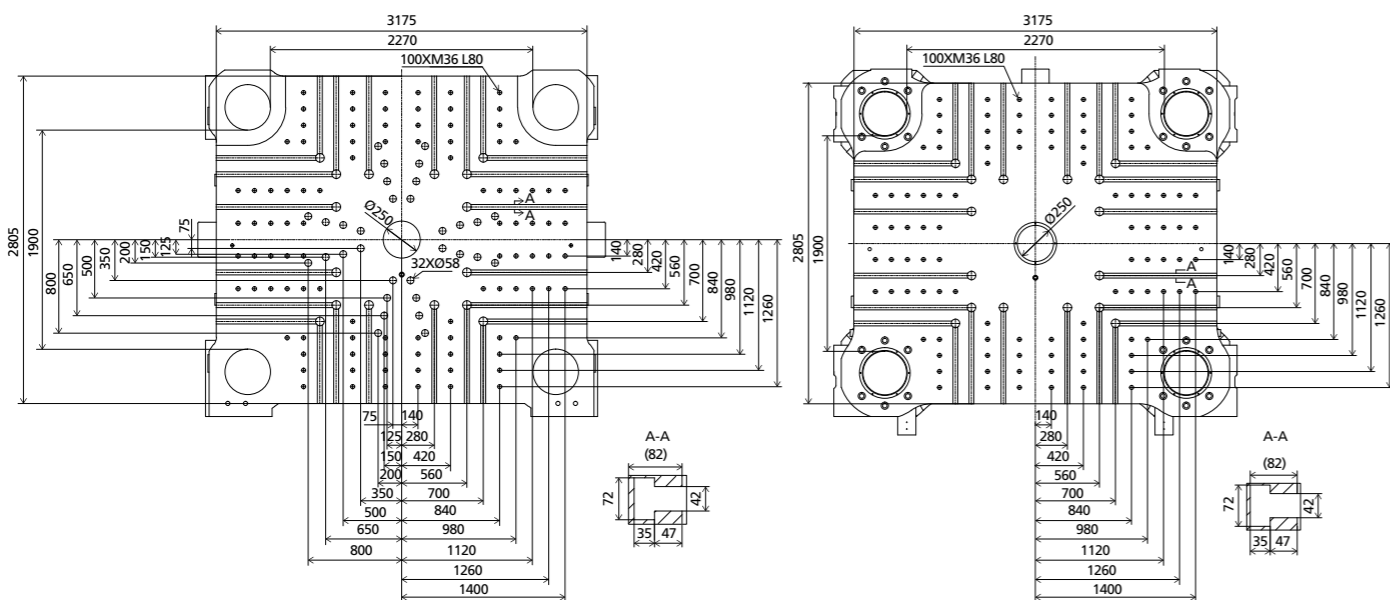


Platen dimensions

Moving platen

Platen dimensions

Fixed platen

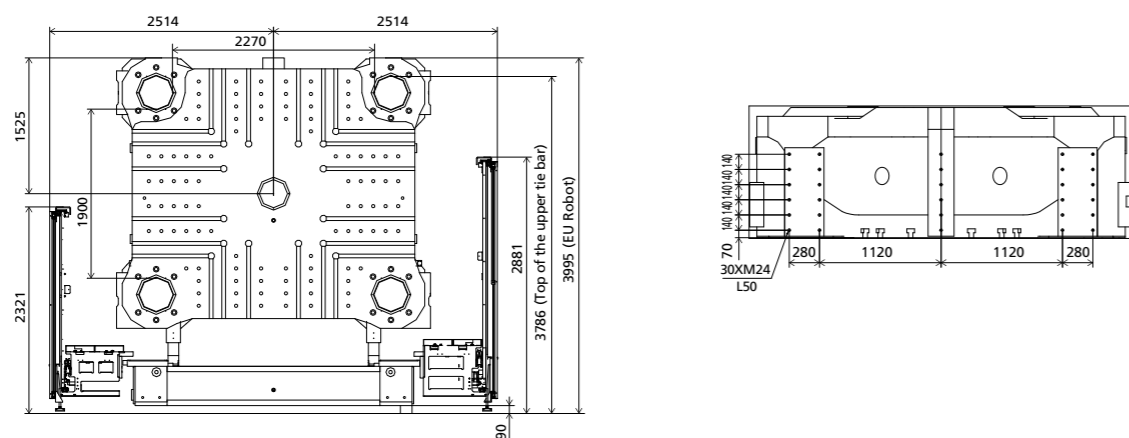


Robot

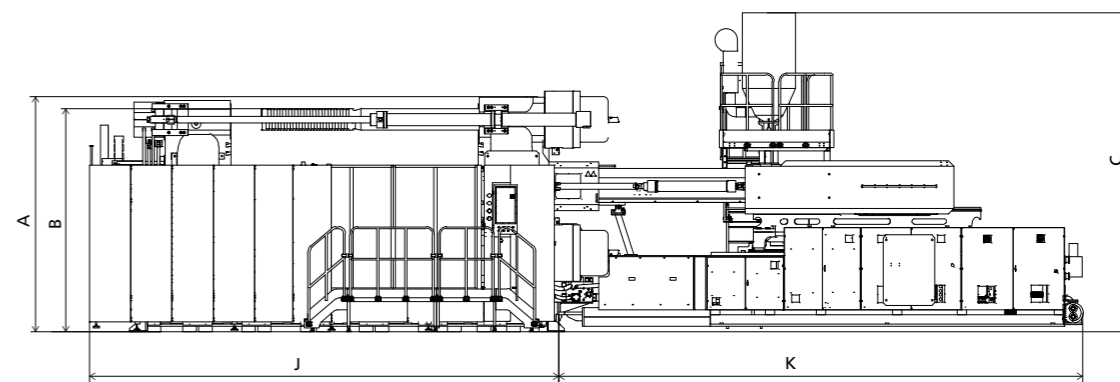
Mechanical interface

Robot

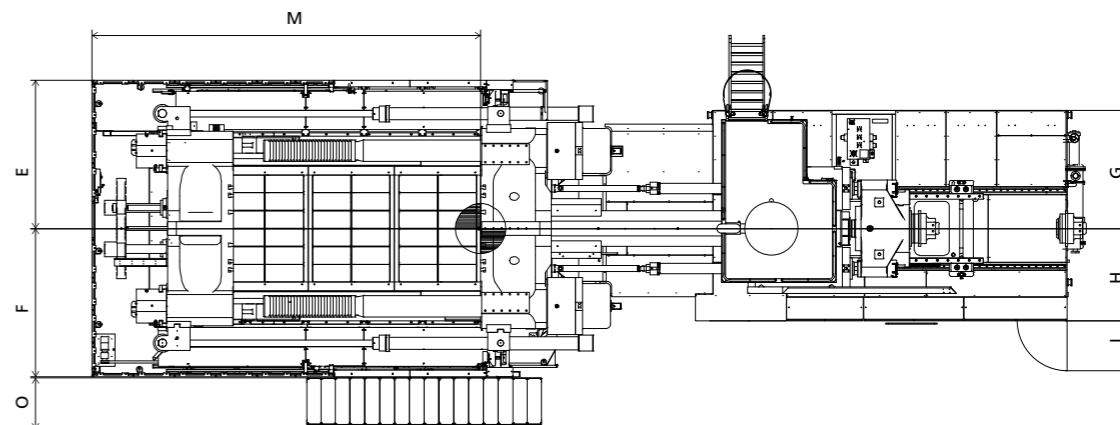
Top view fixed platen



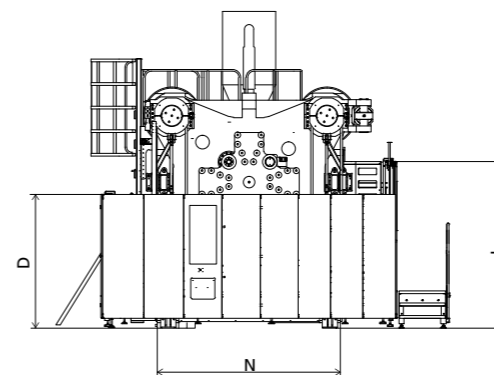
Front view



Top view



Side view



Standard

	A	B	C	D	E	F	G	H	I	J	K	L	M	N	O
22300	3995	3786	5325	2270	2514	2514	1925	1435	850	7975	6443	2830	6605	3110	864
32300	3995	3786	5335	2270	2514	2514	1925	1435	850	7975	7431	2830	6605	3110	864
40300	3995	3786	5375	2270	2514	2514	1965	1515	850	7975	7938	2830	6605	3110	864
50300	3995	3786	5415	2270	2514	2514	2005	1565	850	7975	8355	2830	6605	3110	864
62300	3995	3786	5415	2270	2514	2514	2005	1565	850	7975	8895	2830	6605	3110	864

INJECTION UNIT
DIMENSIONS (mm)

We reserve the right to make changes as a result of further technical advantages.