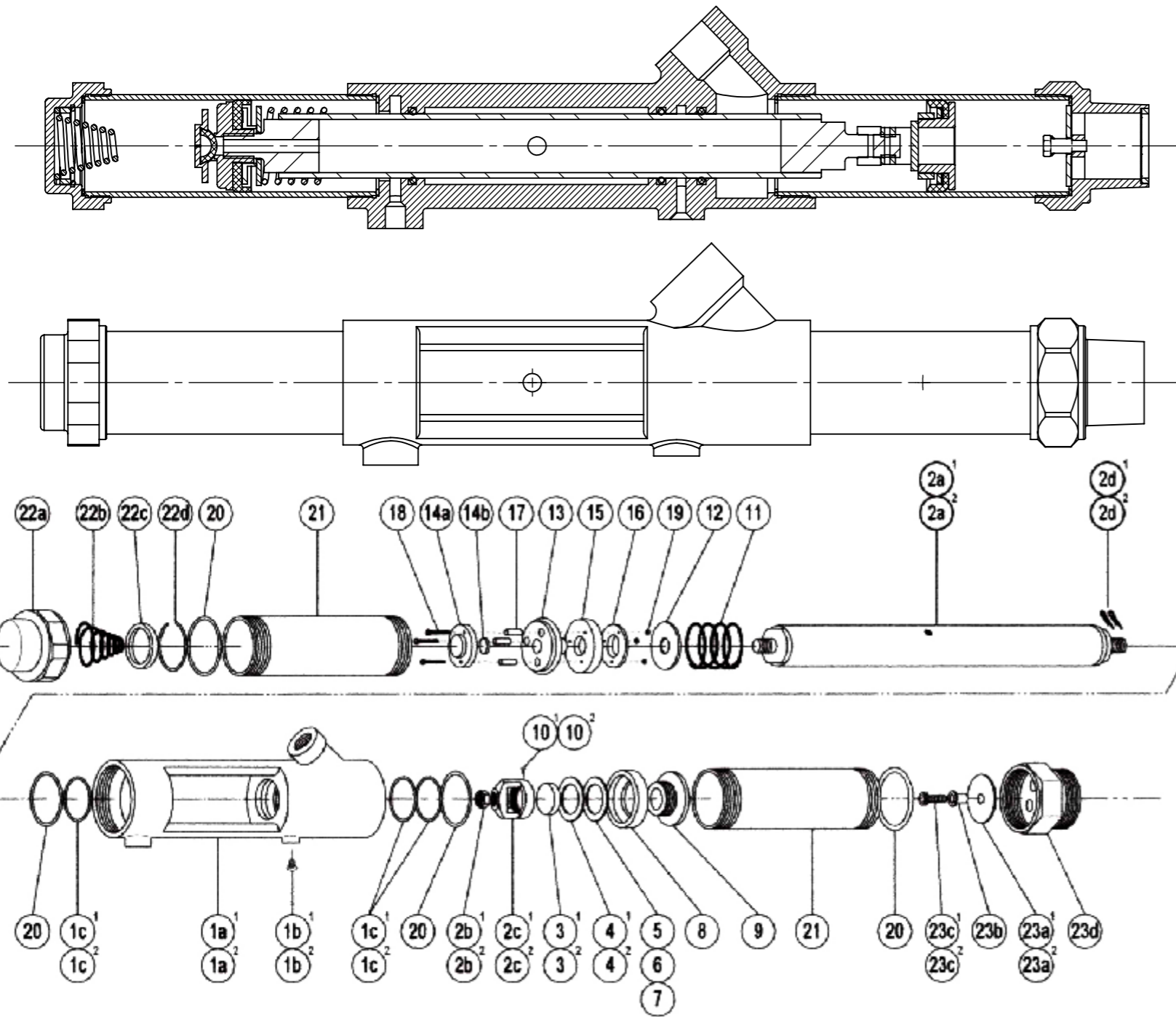
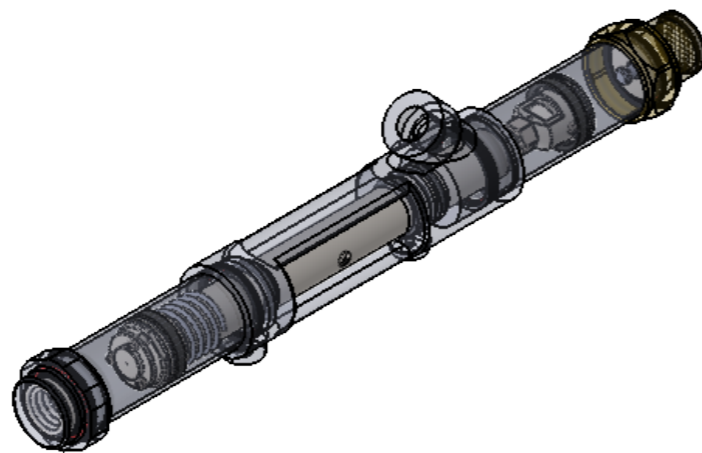



8 7 6 5 4 3 2 1




No.	Name of Parts	Per Set	Parts No.
1 ¹	Cylinder Case Assy.	1set	7003 1001 01 99
	(a) Cylinder Case	1	7003 1001 01 00
	(b) Screw (M6×10)	1	9440 2015 00 00
	(c) O-Ring (P35)	3	9010 1026 00 00
2 ¹	Piston Rod Assy.	1set	7003 1011 01 99
	(a) Piston Rod	1	7003 1011 01 00
	(b) Hex. Nut (W1/2)	1	9500 2001 00 02
	(c) Discharge Valve Case	1	7003 1012 00 00
	(d) Split Pin (3×30)	2	9260 1001 00 00
3 ¹	Discharge Valve	1	7003 1013 00 00
4 ¹	Washer (30.5×41×2.5)	1	8040 1058 00 00
5	C-Packing (30.5×41×0.2)	1	8010 1137 00 00
6	C-Packing (30.5×41×0.3)	1	8010 1138 00 00
7	C-Packing (30.5×41×0.5)	1	8010 1139 00 00
8 ¹	Case Packing	1	7003 1014 00 00
9 ¹	Case Packing Step	1	7003 1015 01 00
10 ¹	Screw (M4×8)	1	9400 2006 00 00
11	Spring (42×36)	1	8020 1123 00 00
12	Washer (14.5×43×2.5)	1	8040 1032 00 00
13	Piston	1	7003 1008 01 00
14	Piston Valve (A) Assy.	1set	7003 1005 01 99
	(a) Piston Valve (A)	1	7003 1005 01 01
	(b) Piston Valve Sheet	1	7003 1006 00 00
15	Piston Packing	1	7003 1009 01 00
16	Piston Valve (B)	1	7003 1005 02 02
17	Piston Valve Spacer	3	7003 1007 01 00
18	Hexagon Socket Bolt (M5×28)	3	8070 3094 00 00
19	Hexagon Nut (M5)	3	9500 1011 00 01
20	FA-Packing (48×54×1.5)	4	8010 3015 00 00
21	Upper Cylinder	2	7003 1003 00 00
22	Cylinder Cap Assy.	1set	7003 0801 00 99
	(a) Cylinder Cap	1	7003 0801 00 00
	(b) Conical Spring (20×42×35)	1	8020 3047 00 00
	(c) Washer (36×42×6)	1	8040 1065 00 00
	(d) Retaining Ring (40.9×2.3)	1	8030 1041 00 00
23 ¹	Induction Valve Assy.	1set	7003 1016 01 99
	(a) Induction Valve	1	7003 1016 01 00
	(b) Collar	1	7003 0844 00 00
	(c) Hexagon Socket Bolt (M6×22×18)	1	8070 3035 00 00
	(d) Induction Inlet Thread Assy.	1set	7003 1018 00 99
YPP-1 Standard Accessories			
24 ¹	Hose Nipple Assy.	1set	8110 1008 00 99
25	Air Cock (PT3/8×PF3/8)	1	9650 0002 00 00
26	Inlet Thread (1/4×3/8)	1	8200 1012 00 00
YPP-1-A Standard Accessories			
24 ¹	Hose Nipple Assy.	1set	8110 1008 00 99
25	Air Cock (PT3/8×PF3/8)	1	9650 0002 00 00
26	Inlet Thread (1/4×3/8)	1	8200 1012 00 00
27 ¹	Pipe	1	7003 1039 00 00
28	Drum Joint Assy.	1set	7003 1036 00 99
	(a) Drum Joint	1	7003 1036 00 00
	(b) Drum Joint Inlet Thread	1	7003 1037 00 00
	(c) Drum Joint Bushing	1	7003 1038 00 00
Special Parts for YPP-1SA·YPP-1SA-A			
1 ²	Cylinder Case Assy.	1set	7005 1001 01 99
	(a) Cylinder Case	1	7003 1001 01 00
	(b) Screw (M6×10)	1	9440 2015 00 00
	(c) O-Ring (P35)	3	9630 1001 00 00
2 ²	Piston Rod Assy.	1set	7004 1011 00 99
	(a) Piston Rod	1	7004 1001 00 00
	(b) Hexagon Nut (W1/2)	1	9500 2015 00 00
	(c) Discharge Valve Case	1	7004 1012 00 00
	(d) Split Pin (3×30)	2	9260 2001 00 00
3 ²	Discharge Valve	1	7004 1013 00 00
4 ²	Washer (30.5×41×2.5)	1	8041 4001 00 00
8 ²	Case Packing	1	7005 1014 00 00
9 ²	Case Packing Step	1	7004 1015 00 00
10 ²	Head Screw (M4×8)	1	9410 5001 00 00
23 ²	Induction Valve Assy.	1set	7004 1016 01 99
	(a) Induction Valve	1	7004 1016 01 00
	(b) Collar	1	7003 0844 00 00
	(c) Hexagon Socket Bolt (M6×22)	1	8070 3199 00 00
	(d) Induction Inlet Thread Assy.	1set	7003 1018 00 99
YPP-1SA Standard Accessories			
24 ²	Hose Nipple Assy.	1set	7004 0151 01 99
25	Air Cock (PT3/8×PF3/8)	1	9650 0002 00 00
26	Inlet Thread (1/4×3/8)	1	8200 1012 00 00
YPP-1SA-A Standard Accessories			
24 ²	Hose Nipple Assy.	1set	7004 0151 01 99
25	Air Cock (PT3/8×PF3/8)	1	9650 0002 00 00
26	Inlet Thread (1/4×3/8)	1	8200 1012 00 00
27 ²	Pipe (Stainless Steel)	1	7004 1039 00 00
28	Drum Joint Assy.	1set	7003 1036 00 99
	(a) Drum Joint	1	7003 1036 00 00
	(b) Drum Joint Inlet Thread	1	7003 1037 00 00
	(c) Drum Joint Bushing	1	7003 1038 00 00

PISTON PUMP
 AIR PRESSURE:6.3BAR
 MAX CAPACITY 65 L/MIN
 TOTAL HEAD: 40M
 WIGHT:4KG
 OUTLET HOSE:19MM
 CONECTION THREAD:PT 1 1/2"
 OUTLET THRED:PT 3/4"
 INLET THREAD:PT 1/4"
 MANUFACTURER:YOKOTA JAPAN
 MODEL:YPP-1





شرکت خدمات بازرگانی معادن و فلزات غیر آهنی
N.F.M.C



شرکت ملی صنایع مس ایران
NATIONAL IRANIAN COPPER INDUSTRIES COMPANY

GEN. TOL.: ISO 3302 m2c / ISO 2768 m		APPLICATION: پمپ های سنگ شکن اولیه	
PAPER SIZE: A3	TITLE: پمپ پیستونی مدل: YPP-1	موضوع: مورد استفاده:	
Request No.: 99252136-01	DRAWING No.: NDUK-010-CR01-122	DESIGN MEAAS. KHOSRAVI	طراح/کروکی KHOSRAVI
Stock No.: 832044004	PART NO.: -	DRAWN KHOSRAVI	ترسیم KHOSRAVI
	ASSEMBLY No.: -	CHECK GHAZIZADEH	بازبین GHAZIZADEH
SCALE:1:10	unit: mm	APPROVE REZAEI	تایید REZAEI
Date: 1399/11/07	Rev. No. 0	SHEET 1 OF 7	

8 7 6 5 4 3 2 1