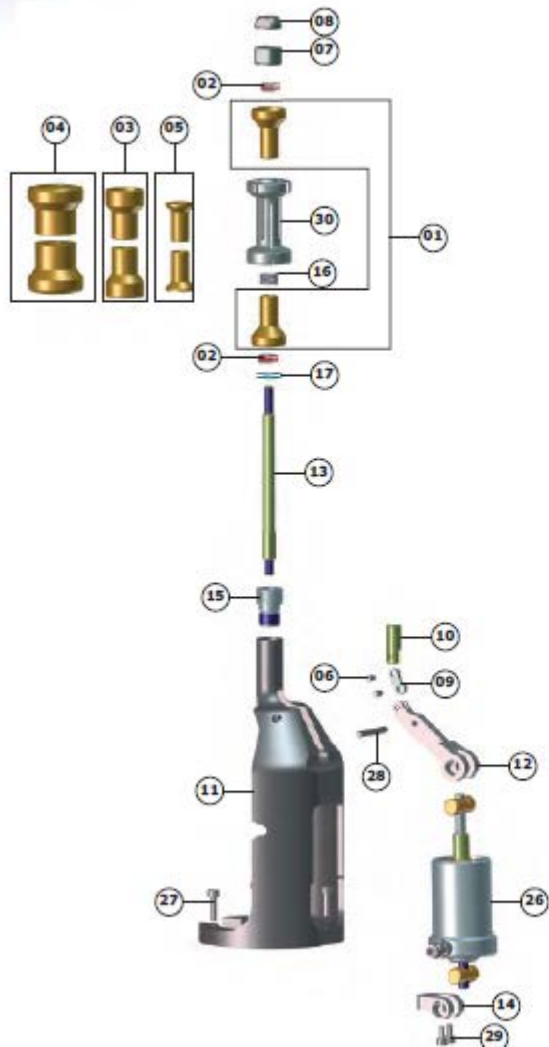



**Expanding mandrels for pneumatic centring & clamping**

ID tube (mm)	Pince
14.75 to 15.00	0023411688
15.25 to 15.50	0023411662
15.50 to 15.75	0023411698
15.75 to 16.00	0023411694
16.00 to 16.25	0023411652
16.50 to 16.75	0023411687
16.75 to 17.00	0023411696
17.25 to 17.50	0023411675
17.75 to 18.00	0023411668
18.35 to 18.60	0023411695
18.75 to 19.00	0023411684
19.00 to 19.25	0023411671
19.25 to 19.50	0023411676
19.50 to 19.75	0023411655
19.75 to 20.00	0023411699
20.25 to 20.50	0023411645
20.31 to 20.56	0023411689
20.75 to 21.00	0023411692
21.00 to 21.25	0023411686
21.25 to 21.50	0023411656
21.50 to 21.75	0023411673
21.75 to 22.00	0023411674
22.00 to 22.25	0023411697
22.25 to 22.50	0023411665
22.75 to 23.00	0023411667
23.25 to 23.50	0023411653
23.50 to 23.75	0023411663
23.75 to 24.00	0023411682
24.75 to 25.00	0023411669

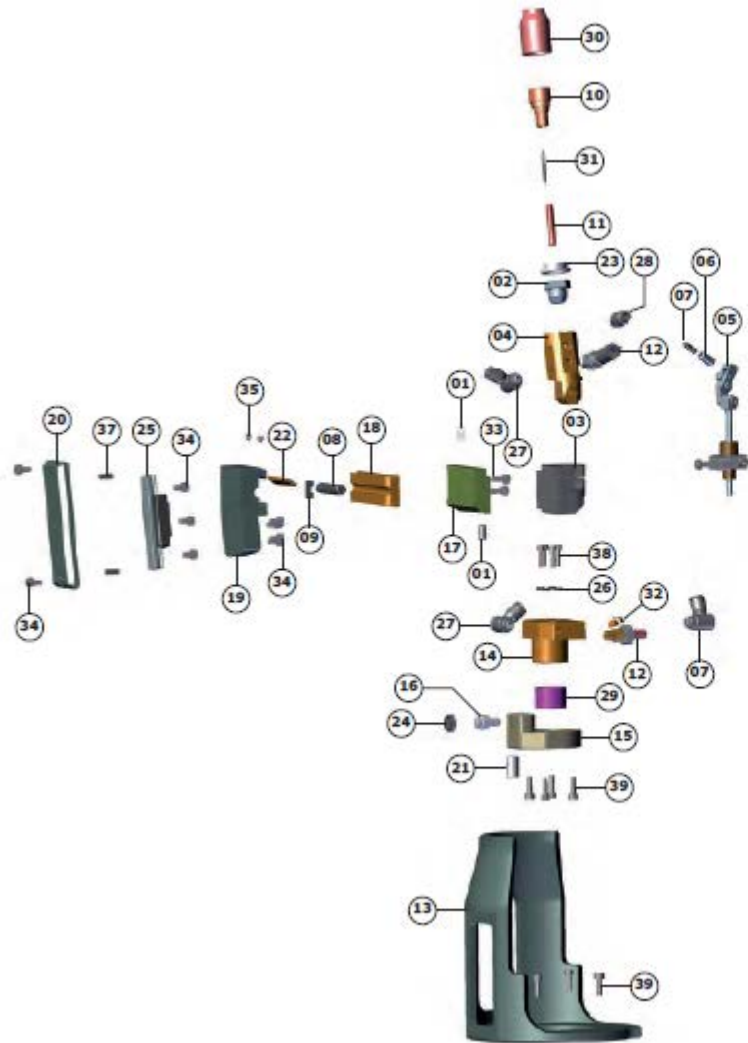
ID tube (mm)	Pince
25.50 to 25.75	0023411643
25.75 to 26.00	0023411680
26.00 to 26.25	0023411670
26.50 to 26.75	0023411644
26.75 to 27.00	0023411681
27.25 to 27.50	0023411693
27.75 to 28.00	0023411666
28.25 to 28.50	0023411657
29.00 to 29.50	0023411646
29.50 to 29.75	0023411648
30.25 to 30.50	0023411683
30.50 to 30.75	0023411664
31.50 to 31.75	0023411685
31.75 to 32.00	0023411691
32.50 to 32.75	0023411672
32.75 to 33.00	0023411679
33.65 to 33.90	0023411690
34.00 to 34.25	0023411647
34.55 to 34.80	0023411677
34.75 to 35.00	0023411661
35.75 to 36.00	0023411649
36.50 to 36.75	0023411659
36.75 to 37.00	0023411650
37.75 to 38.00	0023411651
38.75 to 39.00	0023411678
39.25 to 39.50	0023411660
39.75 to 40.00	0023411607
40.25 to 40.50	0023411658
48.50 to 48.75	0023411654



00 2341 15 01

Pneumatic clamping

No.	Order code	Description	Qty
01	0023411520	Cone, dia. 18 to dia. 22	2
02	9001030005	Single-acting axial stop, dia. 14x6, thickness 5	2
03	0023411532	Cone, dia. 22 to dia. 30	2
04	0023411533	Cone, dia. 30 to dia. 40	2
05	0023411534	Cone, dia. 15 to dia. 18	2
06	0023411563	Articulation pin	2
07	0023411558	Nut	1
08	0023411557	Locknut	1
09	0023411561	Tie rod	1
10	0023411560	Tie rod connection	1
11	0023411554	Shroud	1
12	0023411555	Tilter	1
13	0023411559	Tie rod	1
14	0023411566	Cylinder fixing	1
15	0023411556	Bush nut	1
16	9001270073	Compression spring, dia. 8.0x0.9, length 10	1
17	01272009	Spring washer, 12.5x6.2x0.35x0.8	2
18	01504012	Fitting, straight, M5	2
19	9001111025	Piston seal NAP210 25x19x3.5	1
20	0023411513	Nut	2
21	9001270065	Spring dia. 1x13.9, length 38	1
22	9001206026	Snap ring	1
23	0023411551	Piston	1
24	0023411552	Actuator body	1
25	0023411553	Stop ring	1
26	0023411550	Actuator	1
27	9003020312	Vis CHc M3x12	4
28	9003403030	Pin 3x29.8	1
29	9003020306	Screw, hex skt head, M3x6	2
30	-	Mandrel - depending on the application	1
NR	01513017	Polyurethane tube, dia. 2.5x4, red	0.2



00 3223 15 01

Inclined AVC assembly

No.	Order code	Description	Qty
01	10780710	Nut M3 dia. 5	2
02	11410127	Gas lens adapter, 4 mm	1
03	11931001	Equipped insulator	1
04	0011937105	10° electrode holder, long nozzle	1
05	0016881401	Wire adjuster	1
06	0023411309	End-piece, sheath	1
07	25610560	Wire nozzle, dia. 0.8	1
08	26020302	Screw, control	1
09	26020303	Screw retaining plate	1
10	29820160	Gas lens, long, dia. 2.4 mm	1
11	29820170	Chuck, long, dia. 2.4 mm	1
12	0032231502	Current + water pipe	1
13	0032231505	Shroud	1
14	0032231506	Shaft adapter	1
15	0032231507	Insulating arm	1
16	0032231508	Finger tip	1
17	0032231514	Insulating spacer	1
18	0032231515	Slide	1
19	0032231516	Cam carriage	1
20	0032231517	Rail plate	1
21	0032231518	Nut, M5 dia.7	1
22	0032231519	Shim	1
23	62325105	Bushing	1
24	9001000457	Bearing, 6x10x3	1
25	01079104	Shoe + rail, 1RSR9-MK-UU+55 LM	1
26	9001100176	O-ring, Nitrile, ID 3x1	6
27	9001503006	Simple banjo dia. 4mm M5x0.8	3
28	01504012	Fitting, straight, M5	1
29	9023410213	Contact ring LA III 0.125 dia.18	1
30	62300115	Nozzle, long dia. 9 mm	1
31	62410024	Electrode, tungsten (La 1%), WL10, dia. 2.4 mm	1

**2. 2. Application tube protruding 5 to 13 mm max.**

No.	Description	Order code
1	Torch exceeding +15° water cooled	0023411750
2	Torch exceeding +30° water cooled	0023411755
3	Torch exceeding +15° air cooled	0023411720
4	Torch exceeding +30° air cooled	0023411725
5	One-piece centring mandrel	0023412001
6	One-piece dual ball dia. 6.5 mm centring mandrel holder	See illustrated part lists
7	One-piece dual ball centring mandrel dia. 6.5 mm	Depending on application
8	One-piece dual ball dia. 8 mm centring mandrel holder	See illustrated part lists
9	One-piece dual ball centring mandrel dia. 8 mm	Depending on application
10	Pneumatic clamping	0023411501
11	Cones + Expansion mandrel ID 15 to 40 mm	Depending on application

