



Offer to Mr. Emami,

SJSZ80-156 UPVC Profile Production Line

General Information:

May 30, 2016

1. Machine Model: SJSZ80-156 UPVC Profile Production Line
2. Profile size: As per the customer's requirement (650 or 600mm wide, 32 or 48mm thick)
3. Total installed power: 180KW, Actual power consumption: 125KW. Extruder's motor: 75KW
4. Production line capacity: 280kg/h
5. Price: USD 115,500.00 (Incl. One mould, mixer)
6. Payment: 30% down payment by T/T, 70% balance should be paid off before delivery by T/T.
7. Delivery date: 60 working days.
8. Machine acceptance: The whole line should be tested in supplier's factory after finish and before delivery. Offer turn-key project.
9. Guarantee: 12 months from delivery.

1. Equipment List

Item	Name	Model	Qty	Remarks
1.1	Twin screw extruders	SJSZ80-156	1Unit	With automatic spring loader
1.2	Electrical control system		1Set	ABB Frequency converter. SIEMENS Contactor. Omron temperature controller
1.3	PVC Profile mould		1 SET	Width: 650mm
1.4	Vacuum calibrating platform	SZD-6000	1 Unit	
1.5	Caterpillar haul off	SLQ-650	1 Unit	
1.6	Cross Cutting Machine	SQG-650	1 Unit	
1.7	Conveyor	SXS-4000	1 Unit	
The price for the above mentioned equipment, USD 106,000.00				FOB Qingdao port
Auxiliary Machines				
1.8	Mixer	SHR-300/600	1 SET	USD 9,500.00

The total price of above equipments: USD 115,500.00 FOB QINGDAO PORT



2. Description

Item	Description	Parameters
2. 1	Use material	PVC with Auxiliary material
2. 2	Production line speed	0.5-1 m/min
2. 3	Max. output	280kg/h
2. 4	Overall dimensions	23m × 2.5m × 3m L×W×H
2. 5	Weight(Approx)	13T
2. 6	Total installed power	180kw
2. 7	Actual energy consumption power	125kw
2. 8	Gas consumption	0.4m ³ /min
2. 9	Air pressure	0.6mpa
2. 10	Water cycle	0.5m ³ /min
2. 11	Power	AC380V±10%,50HZ
2. 12	Water supply	Water used for industry, no impurities, by filtrating, water pressure: 0.4mpa water temperature 14~25
2. 13	Work environment temperature	0-40℃

3. Main Technical Parameters

3.1 SJSZ80-156 Conical twin-screw extruder

Screw diameter	∅ 80/∅ 156mm
Screw hardness:	HV> 740
Barrel hardness:	HV> 940
Screw barrel material:	38CrMoAl nitridation treatment
Screw barrel nitridation layer thickness:	0.4-0.7mm
Screw number:	2 pcs
Screw L/D ratio:	22:1
Screw rotating direction:	different direction outward rotation
Screw:	38CrMnAl nitridation treatment
Barrel:	cooling by fan at the outside of the barrel, cast aluminum heater with air duct
Motor power:	75kw



Barrel Heating Zone	5zones
Barrel cooling	4 zones×370W (fan of Taiwan)
Heating power:	4 zones, 28kw
Vacuum exhaust	vacuum pump 3kw
Measuring feeding system	power 2.2kw
Spring loader	500kg/h
Max. capacity:	400kg/h

Reducer

Basic structure	horizontal installation
Cooling mode	outer cycle cooling system
Imported thrust bearing	high torque output
Gear material:	20CrMnTi carburized hardened gear surface, gear grinding treatment

The whole gear box is a special reducing device that features long service-life, low noise and low heating.

3.2 Electrical control system

Frequency inverter:	ABB Frequency Converter
Contactors	SIEMENS Contactor
Temperature controller:	Japan Omron Temperature control table

3.3 PVC Profile Mould 1 set

Mode:	Coat-hanger type board mould
Valid width of mould:	650mm
Product thickness:	48mm
Flow channel mode:	coat-hanger type flow channel
Material of mould:	high quality alloy steel 5CrNiMo forging treatment, the surface of inner flow channel is under chrome plating treatment and polish treatment
Mould structure:	The mould adopts imported technology, the die cavity under hard chrome plating treatment and mirror type polishing treatment
Thickness regulation:	Regulation bolts on mould lips, mould lip is changeable when produce boards of different thickness
Heating mode:	Stainless steel heating bars, guarantees stable and even material flow

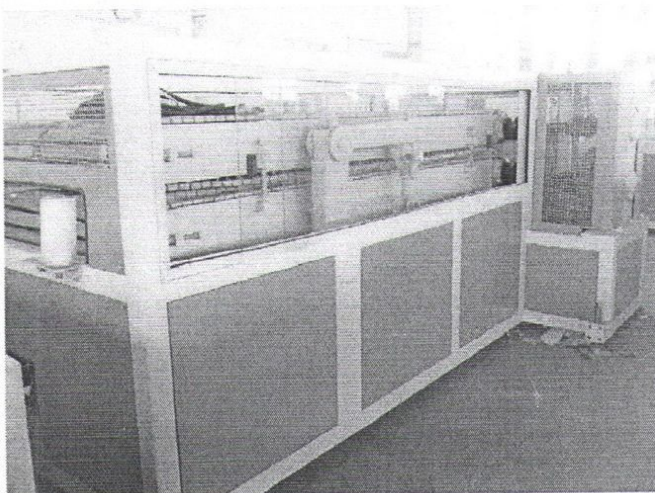
Heating zones: 7 zones *3kw
Mould carriage: bracket type, with movable wheels.

3.4 SZD-6000 Vacuum calibrating platform



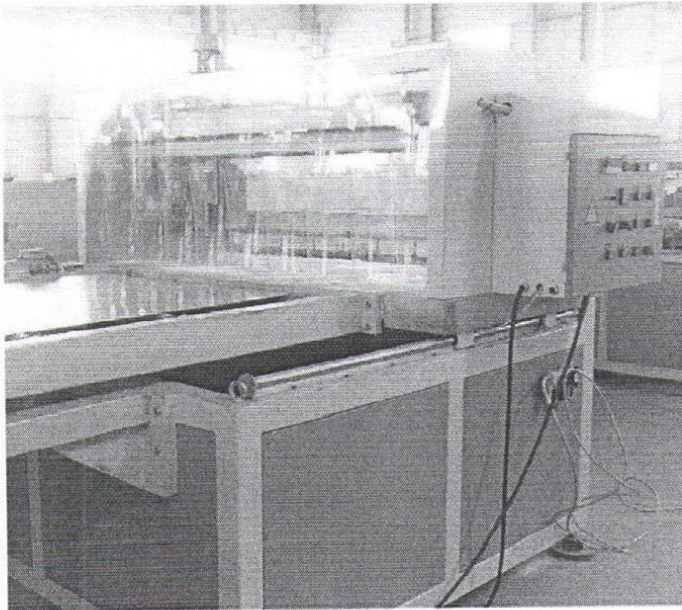
Vacuum pump power	5.5kw x 4 units
Pump power	4kw
Electrical putter travel	500mm
Adjusting type	3 dimension, by bolts
Nozzle material	Brass
Stand surface material	Stainless steel
Sizing stand length	6000 mm
Dry device power	1.1kw

3.5 SQY-650 Type Haul off



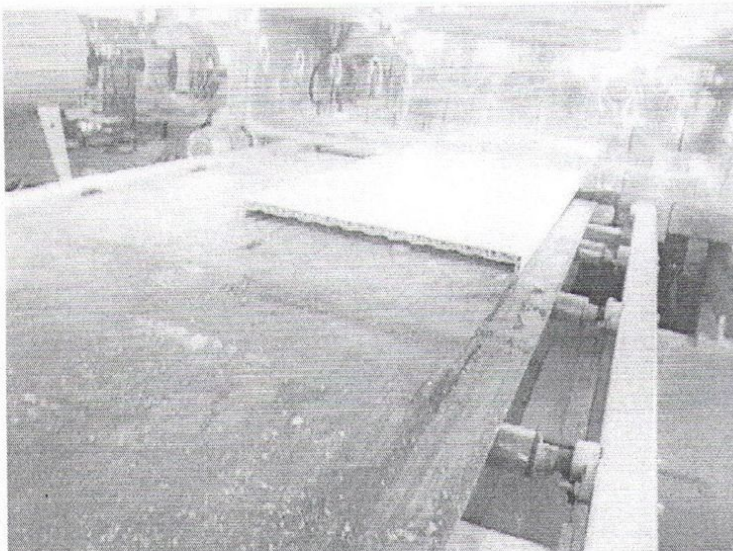
Hauling power	5.5kw
Clamping	Pneumatic clamping
Rubber block model	350 x 2 groups
Clamping length available	2600mm
Frequency inverter	ABB Frequency inverter

3.6 SQG-650 type Cross Cutter



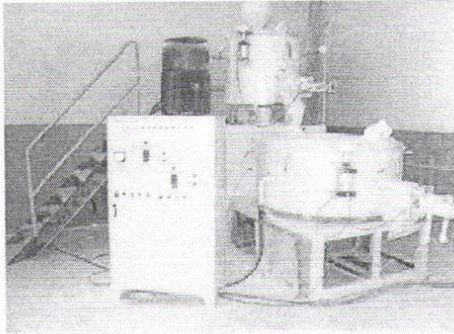
Motor power	2.2kw
Cutting type	Round saw cutting
Saw blade material	Alloy saw blade
Control style	Imported PLC automatic control, travel switch measuring length

3.7 SXS-4000 Conveyor



Length:	4000mm
Power:	1.1kw
Conveying mode:	Flat belt type

3.8 SHR-300/600 high-speed hot and cooling mixer set



Material of the Container: 1Cr18Ni9Ti, Stainless steel, inner surface is very utmost smooth and stiff, featuring wear-resistance and corrosion resistance, material will not sticky to the container.

Mat. of the Lid:	Cast Aluminum.
Total Volume:	300/600L
Valid volume	225/425L
Stirring Blade:	3pcs
Mat. of stirring blades	3Cr13Ni9Ti
Heating Mode:	by electricity and self friction.
Cooling:	by water
Temperature Control:	Electron Auto-control
Double Speed Motor 1 set	power: 40/55KW
Cooling mixing motor 1 set	power: 7.5KW
Mixing time	6-10min
Cooling time	10-15min
Unloader material	cast aluminum
Unloading mode	pneumatic

4. Quality assurance

4.1 Quality assurance range: The machines and electric system of the SJ92-188 production line

Quality assurance period: After delivery, with the exception of man-made damage, the quality assurance period of the entire line is 12 months



During the guarantee period and in normal working hours, if the shutdown of the production line is caused by the error of the equipment, free replacement parts will be supplied by manufacturer.

In the guarantee period, if the shutdown of the production line is caused by the buyer's incorrect operation, the loss of the replacement cost and freight charges should be paid by the buyer.

After the guarantee period, the manufacturer will supply long-term preferential services.

The seller has the responsibility for the quality guarantee of the goods. If any damage occurred, the buyer should contact the manufacturer directly. The terms of quality assurance are valid.

4.2 Technical training

Training recipient: 1 manager and 1-2 operators of the buyer

Training content: Production procedure and technology, equipment structure and repair, electric principle, main operating points and method, incorrect operating prediction and solution

Training place In the factory of the buyer

Note: When the machine is finished, the seller will test the machine in the seller's factory first, and the buyer will send one or two experts to the seller's factory to check the machine, until the machine can produce the products the buyer wants.

If the buyer can not come for checking, the seller will send the video of the testing for the whole production line to the buyer for checking.

Installation and Commissioning in the buyer's factory: The seller should send one expert to the buyer's factory to help the installation and commissioning of the equipment, the buyer is responsible for his round-trip tickets fee from Qingdao to the buyer's factory, and his board and lodging fees in the buy's country; the buyer should pay USD 80 to the seller's expert every day as pocket money.