

YSZB-20000H(超洁净型) Super Clean Type



DAIRY FILLING & SEALING MACHINE  
乳品灌装封口机



YSZB-8000(10000/20000)

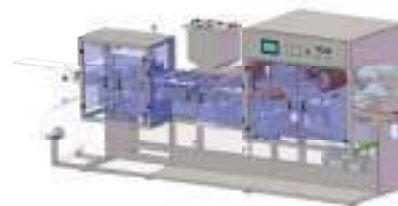


YSZB-5000

| 型号 Model                                | YSZB-5000            | YSZB-8000            | YSZB-10000           | YSZB-20000                               |
|---|----------------------|----------------------|----------------------|--|
| 产量 (杯/小时) Output(cup/hour)              | 5000                 | 8000                 | 10000                | 20000                                    |
| 功率 (kW) Power                           | 9.5                  | 10.5                 | 11.5                 | 45 (超洁净型约为55)<br>55 for Super clean type |
| 步进杯数 Step cups                          | 4                    | 6                    | 8                    | 16                                       |
| 灌装量 (g/mL) Filling volume               | 50 ~300              | 50 ~300              | 50 ~300              | 50 ~300                                  |
| 压缩空气压力 (MPa)<br>Compressed air pressure | 0.6                  | 0.6                  | 0.6                  | 0.6                                      |
| 耗气量 (m³/min) Air Consumption            | 0.8                  | 0.8                  | 0.9                  | 1.2                                      |
| 盖膜类型Cover film type                     | 片膜/卷膜Sheet/Roll film | 片膜/卷膜Sheet/Roll film | 片膜/卷膜Sheet/Roll film | 片膜/卷膜Sheet/Roll film                     |
| 重量 (t) Weight                           | 3.2                  | 4.2                  | 4.8                  | 12                                       |

全自动塑杯成型灌装封口机 Automatic plastic cup filling and sealing machine

YSDXR-20000HB (40000HB带环标)



YSDXR-6000GS (10000GS)



YSDXR-6000 (9000)



YSSH-1400 塑盒封口机 Plastic Box Sealer

| 型号<br>Model                                  | YSDXR-6000      | YSDXR-9000      | YSDXR-20000     | YSDXR-40000HB   | YSDXR-6000GS    | YSDXR-10000GS   |
|--|-----------------|-----------------|-----------------|-----------------|-----------------|-----------------|
| 产量 (杯/小时)<br>Output (cup/hour)               | 6000            | 9000            | 18000           | 36000           | 6000            | 10000           |
| 功率 (kw)<br>Power (kw)                        | 25              | 25              | 40              | 48              | 20              | 20              |
| 步进杯数<br>Step cups                            | 8               | 12              | 12              | 24              | 8               | 12              |
| 灌装量 (g/mL)<br>Filling volume                 | 30 ~150         | 30 ~150         | 30 ~150         | 30 ~150         | 30 ~100         | 30 ~100         |
| 压缩空气压力 (MPa)<br>Compressed air pressure      | 0.6             | 0.6             | 0.6             | 0.6             | 0.6             | 0.6             |
| 耗气量 (m <sup>3</sup> /min)<br>Air Consumption | 1.2             | 1.2             | 0.6             | 0.7             | 0.5             | 0.5             |
| 多种物料灌装<br>Multi-material filling             | 可以Yes           | 可以Yes           | 可以Yes           | 可以Yes           | 不可以No           | 不可以No           |
| 主驱动方式<br>Main driving mode                   | 伺服驱动Servo Drive | 伺服驱动Servo Drive | 伺服驱动Servo Drive | 伺服驱动Servo Drive | 伺服驱动Servo Drive | 伺服驱动Servo Drive |
| 重量<br>Weight (t)                             | 3.2             | 4.5             | 6.5             | 8.2             | 2               | 2               |

超洁净直线型塑瓶灌装机 Super Clean Linear Plastic Bottle Filler

YSCSP-10000



|                             |                              |
|-----------------------------|------------------------------|
| 产量<br>Production capacity   | 12000B/H<br>(Based on 250ml) |
| 灌装头数<br>Filling heads       | 10-16单排                      |
| 灌装量<br>Filling volume       | 100-1500ml                   |
| 灌装温度<br>Filling temperature | 6°C-90°C                     |
| 塑瓶材质<br>Material            | PET/PP/PE                    |

全自动直线式塑瓶灌装封口机 Automatic linear plastic bottle filling and sealing machine

| 型号<br>Model                                       | YSSP-1000 | YSSP-2000 | YSSP-6000 |
|---|-----------|-----------|-----------|
| 生产能力 (瓶/小时)<br>Production capacity(bottle / hour) | 1000      | 2000      | 6000      |
| 功率 (kw)<br>Power (kw)                             | 10        | 11        | 26        |
| 灌装头数量<br>Filling heads                            | 4         | 6         | 12        |
| 灌装量 (g/mL)<br>Filling volume                      | 500 ~1250 | 500~1250  | 100 ~500  |
| 压缩空气压力 (MPa)<br>Compressed air pressure           | 0.6       | 0.6       | 0.6       |
| 耗气量 (m <sup>3</sup> /min)<br>Air Consumption      | 0.6       | 0.7       | 0.8       |
| 重量<br>Weight (t)                                  | 3         | 3.5       | 4.5       |





全自动旋转式塑瓶灌装封口机 Automatic rotary filling and sealing machine for plastic bottles



|   |             |             |             |             |
|---|-------------|-------------|-------------|-------------|
| 型号<br>Model   | YGF24-20000 | YGF32-25000 | YGF40-30000 | YGF48-36000 |
| 生产能力 (瓶/小时 100ml)<br>Production capacity (bottle / hour)(100ml) | 20000       | 25000       | 30000       | 36000       |
| 功率 (kw)<br>Power (kw)   | 14.2        | 14.2        | 18.17       | 19          |
| 灌装头数量<br>Filling heads  | 24          | 32          | 40          | 48          |
| 灌装量 (g/mL)<br>Filling volume                                    | 100-1000    | 100-1000    | 100-1000    | 100-1000    |
| 压缩空气压力 (MPa)<br>Compressed air pressure                         | 0.6         | 0.6         | 0.6         | 0.6         |
| 耗气量 (m³/min)<br>Air Consumption                                 | 0.6         | 0.6         | 0.6         | 0.6         |
| 瓶径 (mm)<br>Bottle diameter                                      | Φ40-85      | Φ40-85      | Φ40-85      | Φ40-85      |
| 瓶高 (mm)<br>Bottle height  | 80-280      | 80-280      | 80-280      | 80-280      |
| 重量<br>Weight (t)  | 4           | 5           | 6           | 7           |

全自动旋转式纸(塑)杯灌装封口机 Automatic rotary paper (plastic) cup filling and sealing machine



|   |            |            |            |
|---|------------|------------|------------|
| 型号<br>Model                             | YSXZB-2500 | YSXZB-3500 | YSXZB-5000 |
| 产量 (杯/小时)<br>Output (cup/hour)          | 2500       | 3500       | 5000       |
| 功率 (kw)<br>Power (kw)                   | 3.5        | 3.5        | 4.5        |
| 灌装头数量<br>Filling heads                  | 2          | 3          | 4          |
| 灌装量 (g/mL)<br>Filling volume            | 90 ~200    | 90 ~200    | 90 ~200    |
| 压缩空气压力 (MPa)<br>Compressed air pressure | 0.6        | 0.6        | 0.6        |
| 耗气量 (m³/min)<br>Air Consumption         | 0.8        | 0.8        | 0.8        |
| 重量<br>Weight (t)                        | 2.5        | 3          | 4          |

全自动旋转式玻璃瓶灌装旋盖机 Automatic Rotary Filling and Capping Machine for Glass Bottles

|   |         |
|---|---------|
| 生产能力 (瓶/小时)<br>Production capacity(Bottle/hour) | 30000   |
| 功率 (kw)<br>Power                                | 12      |
| 洗瓶夹数量<br>Number of bottle washers               | 72      |
| 灌装头数量<br>Filling heads                          | 60      |
| 旋盖头数量<br>Number of caps                         | 18      |
| 瓶径 (mm)<br>Bottle diameter                      | Φ40-85  |
| 瓶高 (mm)<br>Bottle height                        | 150-300 |
| 重量 (t)<br>Weight                                | 20      |

GFC72\*60\*18



喷淋式隧道杀菌机 Spray tunnel sterilizer



直立袋灌装旋盖机 Vertical bag filling and capping machine



YSXP30 (40) 洗瓶机 Bottle washer



YLP01 理瓶机 Bottle unscrambler

|   |         |         |         |         |         |
|---|---------|---------|---------|---------|---------|
| 型号<br>Model                             | YSJ-4   | YSJ-5   | YSJ-6   | YSJ-7   | YSJ-8   |
| 系统区域数量<br>Number of System Areas        | 4       | 5       | 6       | 7       | 8       |
| 杀菌机功率 (kW)<br>Sterilizer Power          | 13.87   | 16.87   | 19.87   | 22.87   | 25.87   |
| 冷却机功率 (kW)<br>Cooler Power              | -       | 5.87    | 5.87    | 5.87    | 7.87    |
| 压缩空气压力 (MPa)<br>Compressed air pressure | 0.6     | 0.6     | 0.6     | 0.6     | 0.6     |
| 水压力 (MPa)<br>Water pressure             | 0.2     | 0.2     | 0.2     | 0.2     | 0.2     |
| 蒸汽压力 (MPa)<br>Steam pressure            | 0.4-0.7 | 0.5-0.8 | 0.5-0.8 | 0.5-0.8 | 0.5-0.8 |

# BEER FILLING & SEALING MACHINE

## 啤酒灌装封口机



PGF系列易拉罐灌装机 PGF SERIES CAN FILLER & SEAMER



YDL系列易拉罐灌装机 YDL SERIES CAN FILLER & SEAMER



YLG系列易拉罐灌装机 YLG SERIES CAN FILLER & SEAMER

|  |  |  |  |
|--|--|--|--|
| 机型<br>Model & Size                         | PGF50易拉罐灌装机<br>PGF50 CAN Filler & Seamer | PGF40易拉罐灌装机<br>PGF40 CAN Filler & Seamer                 | PGF108易拉罐灌装机<br>PGF108 CAN Filler & Seamer               |
| 生产能力<br>Nominal Capacity                   | 600CPM ( 330ml bottle )                  | 24000CPH ( 330ml bottle ) &<br>18000CPH ( 500ml bottle ) | 60000CPH ( 500ml bottle ) &<br>60000CPH ( 330ml bottle ) |
| 灌装阀头数<br>Filling Valves                    | 50 units                                 | 40 units   | 108 units  |
| 料缸灌装阀中心直径<br>Filling Valve center diameter | 2000mm                                   | 1680mm   | 3078mm   |
| 灌装温度<br>Filling Temperature                | 0~4°C                                    | 0~4°C  | ≤4°C   |
| 最大灌装背压<br>Max. filling pressure            | 7bar                                     | 7bar   | 7bar   |
| 罐子外部直径<br>Empty can DIN                    | 50-90mm                                  | 50-66mm  | 50.8-76mm  |
| 罐子高度<br>Empty can height                   | 85-195mm                                 | 85-195mm   | 90-200mm   |
| 外形尺寸 (长×宽×高)<br>Overall dimension (L×W×H)  | 12000×6000×2500mm                        | 12000×6000×2500mm  | 12500×6500×2500mm  |
| 环缸总容量<br>Filling bowl weight               | 300L                                     | 260L   | 580L   |
| 机器重量 (不含封盖机)<br>Weight (without seamer)    | 12000kg                                  | 10000kg  | 23000kg  |
| 装机功率<br>Motor power                        | 19.62kW                                  | 19.62kW  | 19.62kW  |
| 二氧化碳备压<br>CO2 pressure                     | 1.5bar                                   | 1.5bar   | 1.5-6bar   |
| 压缩空气耗量<br>Compressed air consumption       | 1Nm <sup>3</sup> /h                      | 1Nm <sup>3</sup> /h                                      | 1Nm <sup>3</sup> /h                                      |



SXP系列双端洗瓶机 SXP SERIES DOUBLE-END BOTTLE WASHER



## HORIZONTAL PACKAGING MACHINE 枕式包装机

PIISC系列节能型杀菌机 PIISC SERIES ENERGY-EFFICIENT PASTEURIZER



|  |   |   |   |   |   |   |
|--|---|---|---|---|---|---|
| 机型<br>Model & Size                       | SXP32D双端洗瓶机<br>SXP32D Double-end<br>Bottle Washer | SXP32H双端洗瓶机<br>SXP32H Double-end<br>Bottle Washer | SXP44D双端洗瓶机<br>SXP44D Double-end<br>Bottle Washer | SXP44J双端洗瓶机<br>SXP44J Double-end<br>Bottle Washer | SXP44JH双端洗瓶机<br>SXP44JH Double-end<br>Bottle Washer | SXPX47双端洗瓶机<br>SXPX47 Double-end<br>Bottle Washer |
| 生产能力(瓶/时) ( BPH)<br>Nominal Capacity     | 24000   | 24000   | 36000   | 40000   | 40000-50000   | 50000   |
| 适应瓶径<br>Bottle Diameter                  | 60-82mm   | 60-83mm   | 60-83mm   | 60-83mm   | 60-83mm   | 60-83mm   |
| 适应瓶高<br>Bottle Height                    | 160-295mm   | 160-295mm   | 160-295mm   | 160-295mm   | 160-295mm   | 160-295mm   |
| 每排瓶盒个数<br>Bottle pockets per carrier     | 32  | 32  | 44  | 44  | 44  | 47  |
| 机内载瓶数<br>Loading bottles                 | 13280   | 15136   | 18260   | 22704   | 24948   | 27448   |
| 移动节拍<br>Bottle pocket move tempo         | 4.8s  | 4.8s  | 3.96 s  | 3.96 s  | 3.96 s  | 3.07 s  |
| 设备重量<br>Weight                           | Approx 108t                                       | Approx 127t                                       | approx 135t                                       | approx 172t                                       | approx 195t   | approx 195 t                                      |
| 外形尺寸(长×宽×高)<br>Overall dimension (L×W×H) | 17.3×7.4×4.6 m                                    | 19.46×7.2×4.5 m                                   | 17.4×8.4×4.5 m                                    | 20.6×8.4×4.5 m                                    | 22×8.4×4.5 m  | 22.4×9.2×4.5 m                                    |



**YZB100 上送膜旋转式枕包机 Flow pack machine**  
 电源 Power AC380V 50Hz 6kW  
 包装膜材质 Film material PET/AL/PE, OPP/PE等枕包复合膜  
 包装膜宽 Film width 120-400mm  
 卷膜直径 Film diameter 300mm  
 产品规格 Products size L80-240mm, W40-150mm, H5-35mm  
 包装速度 Speed 120包/分钟  
 120 packs/min  
 外形尺寸 Machine size L3260×W930×H1500mm  
 适用产品 Products 外形类似长方体, 散件需有托盒, 例如药板包装  
 Shaped like a cuboid, the pieces need tray, such as medicine packaging  
 可选项 Optional 伺服下料机构  
 Servo feeding mechanism



**YZB 100XWL 下送膜往复式枕包机 Flow pack machine**  
 电源 Power AC380V 50Hz 10.5kW  
 包装膜材质 Film material PET/AL/PE, OPP/PE等枕包复合膜  
 包装膜宽 Film width 240-820mm  
 卷膜直径 Film diameter 300mm  
 产品规格 Products size L150-600mm, W80-240mm, H20-150mm  
 包装速度 Speed 60包/分钟  
 60 packs/min  
 外形尺寸 Machine size L5505×W1385×H1630mm  
 适用产品 Products 蔬菜类产品或长方体类产品  
 Vegetable or cuboid products  
 输送方向 Direction 自右往左  
 From right to left

**YZB100H 上送膜旋转式枕包机 Flow pack machine**

电源 Power AC380V 50Hz 6.5kW  
 包装膜材质 Film material PET/AL/PE, OPP/PE等枕包复合膜  
 包装膜宽 Film width 120-400mm  
 卷膜直径 Film diameter 300mm  
 产品规格 Products size L80-240mm, W40-150mm, H5-70mm  
 包装速度 Speed 120包/分钟  
 120 packs/min  
 外形尺寸 Machine size L3895×W995×H1680mm  
 适用产品 Products 外形类似长方体, 散件需有托盒, 例如药板包装  
 Shaped like a cuboid, the pieces need tray, such as medicine packaging



**YZT100WL 上送膜往复式枕式套袋机 Flow pack machine**

电源 Power AC380V 50Hz 6.5kW  
 包装膜材质 Film material POF热缩膜等  
 POF film  
 包装膜宽 Film width 240-640mm  
 卷膜直径 Film diameter 300mm  
 产品规格 Products size L100-400mm, W60-240mm, H20-150mm  
 包装速度 Speed 80包/分钟  
 80 packs/min  
 外形尺寸 Machine size L4355×W1110×H1630mm  
 适用产品 Products 外形类似长方体, 散件需有托盒, 如碗面等  
 Shape is similar as cuboid, the pieces need tray, such as box instant noodles



**YZB 100L 上送膜旋转式枕包机 Flow pack machine**

电源 Power AC380V 50Hz 6kW  
 包装膜材质 Film material PET/AL/PE, OPP/PE等枕包复合膜  
 包装膜宽 Film width 240-600mm  
 卷膜直径 Film diameter 300mm  
 产品规格 Products size L100-400mm, W80-220mm, H20-100mm  
 包装速度 Speed 100包/分钟  
 100 packs/min  
 外形尺寸 Machine size L5535×W1235×H1540mm  
 适用产品 Products 外形类似长方体, 散件需有托盒, 例如小面包包装  
 Shaped like a cuboid, the pieces need tray, such as buns  
 输送方向 Direction 自右往左  
 From right to left

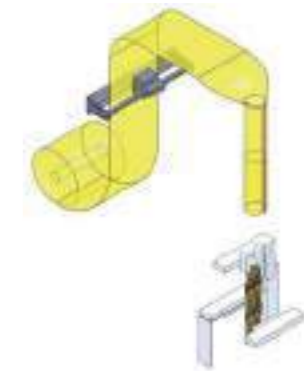


**YZB 100X 下送膜旋转式枕包机 Flow pack machine**  
 电源 Power AC380V 50Hz 5kW  
 包装膜材质 Film material PET/AL/PE, OPP/PE等枕包复合膜  
 包装膜宽 Film width 240-600mm  
 卷膜直径 Film diameter 300mm  
 产品规格 Products size L100-400mm, W80-220mm, H20-100mm  
 包装速度 Speed 80包/分钟  
 80 packs/min  
 外形尺寸 Machine size L5460×W1235×H1675mm  
 适用产品 Products 药品, 橡胶, 产品不能长时间加热  
 Medicine, rubber, the products cannot be heated for a long time  
 输送方向 Direction 自右往左  
 From right to left



**YZT 100XWL 下送膜往复式枕式套袋机 Flow pack machine**  
 电源 Power AC380V 50Hz 6.8kW  
 包装膜材质 Film material POF热缩膜等  
 POF film  
 包装膜宽 Film width 300-880mm  
 卷膜直径 Film diameter 300mm  
 产品规格 Products size L150-600mm, W80-240mm, H20-150mm  
 包装速度 Speed 80包/分钟  
 80 packs/min  
 外形尺寸 Machine size L5505×W1385×H1715mm  
 适用产品 Products 外形类似长方体, 散件需有托盒, 如蔬菜类  
 Shape is similar as cuboid, the pieces need tray, including vegetable  
 输送方向 Direction 自右往左  
 From right to left

# VERTICAL PACKAGING MACHINE 全自动立式包装机



|                            |  |  |  |  |
|----------------------------|--|--|--|--|
| 型号<br>Model                | YS-BS-2010Y1005-IP-P                     | YS-BS-2010Y1016-IP-P                     | YS-BS-2010Y1405-IP-P                     | YS-BS-2010Y1416-IP-P                     |
| 袋型<br>Bag type             | 枕式袋<br>Pillow bag                        | 枕式袋<br>Pillow bag                        | 枕式袋<br>Pillow bag                        | 枕式袋<br>Pillow bag                        |
| 称重范围<br>Weighing range     | 5-100g                                   | 10-1000g                                 | 5-200g                                   | 10-1500g                                 |
| 包装速度<br>Speed              | 10-60 P/M                                | 10-60 P/M                                | 10-70 P/M                                | 10-70 P/M                                |
| 袋宽W(mm)                    | 60-200mm                                 | 60-200mm                                 | 60-200mm                                 | 60-200mm                                 |
| 袋长L(mm)                    | 60-260mm                                 | 60-260mm                                 | 60-260mm                                 | 60-260mm                                 |
| 薄膜材料<br>packaging material | OPP/AL/PE, PET/VMPET etc.                | OPP/AL/PE, PET/VMPET etc.                | OPP/AL/PE, PET/VMPET etc.                | OPP/AL/PE, PET/VMPET etc.                |
| 膜宽<br>Film width           | 420mm                                    | 420mm                                    | 420mm                                    | 420mm                                    |
| 卷膜外径<br>Film diameter      | ≤400mm                                   | ≤400mm                                   | ≤400mm                                   | ≤400mm                                   |
| 卷膜纸芯内径<br>Core diameter    | 76mm                                     | 76mm                                     | 76mm                                     | 76mm                                     |
| 压缩空气压力<br>Air pressure     | 0.5-0.8 Mpa                              | 0.5-0.8 Mpa                              | 0.5-0.8 Mpa                              | 0.5-0.8 Mpa                              |
| 耗气量<br>Air consumption     | 1.5L/min                                 | 1.5L/min                                 | 1.5L/min                                 | 1.5L/min                                 |
| 整机尺寸mm<br>Outer dimensions | 1650×1090×2170                           | 1700×1150×2390                           | 1650×1090×2190                           | 1800×1250×2580                           |
| 机器重量<br>Weight             | 550kg                                    | 750kg                                    | 600kg                                    | 800kg                                    |
| 电压<br>Power supply         | 3N-PN-50Hz 380V/220V<br>(3相5线)3P 5 wires | 3N-PN-50Hz 380V/220V<br>(3相5线)3P 5 wires | 3N-PN-50Hz 380V/220V<br>(3相5线)3P 5 wires | 3N-PN-50Hz 380V/220V<br>(3相5线)3P 5 wires |
| 总功率<br>Total power         | 5KW                                      | 5.5KW                                    | 6KW                                      | 6.5KW                                    |



背封连续式立式机 BACK SEALED, CONTINUOUS MACHINE



侧封烫边连续式立式机 CORNER SEALED, QUARE HEATED, CONTINUOUS MACHINE



中小袋型 Small bag : YS-BS-2520-CP/ 中大袋型 Large bag : YS-BS-3620-CP

| 型号<br>Model                            | YS-BS-2520-CP-A                              | YS-BS-3620-CP-A                              | YS-BS-2520-CP-P                              | YS-BS-3620-CP-P                              | YS-BS-2520-CP-GB                             | YS-BS-3620-CP-GB                             |
|--|--|--|--|--|--|--|
| 袋型<br>Bag type                         | 枕式袋, 叉角袋<br>Pillow bag<br>& Gusseted bag     | 枕式袋, 叉角袋<br>Pillow bag<br>& Gusseted bag     | 枕式袋<br>Pillow bag                            | 枕式袋<br>Pillow bag                            | 叉角坐底袋<br>Gusseted bag<br>+bottom block       | 叉角坐底袋<br>Gusseted bag<br>+bottom block       |
| 包装速度(包/分钟)<br>Speed(bag/min)           | 10-150                                       | 10-110                                       | 10-150                                       | 10-130                                       | 10-120                                       | 10-100                                       |
| 枕式袋<br>Pillow bag                      | 袋宽W 60-250<br>袋长L 60-400                     | 60-360<br>60-500                             | 60-250<br>60-400                             | 60-360<br>60-500                             | 60-250<br>60-400                             | 60-360<br>60-500                             |
| 叉角袋<br>(0.5正宽 > 0.5侧宽)<br>Gusseted bag | 正宽W 50-220<br>侧宽D 35-110<br>袋长L 60-400       | 50-330<br>45-140<br>60-500                   |  |  | 50-220<br>35-110<br>60-400                   | 50-330<br>45-140<br>60-500                   |
| 薄膜材料<br>packaging material             | OPP/AL/PE,<br>PET/VMPET etc.                 | OPP/AL/PE,<br>PET/VMPET etc.                 | OPP/AL/PE,<br>PET/VMPET etc.                 | OPP/AL/PE,<br>PET/VMPET etc.                 | OPP/AL/PE,<br>PET/VMPET etc.                 | OPP/AL/PE,<br>PET/VMPET etc.                 |
| 卷膜外径<br>Film diameter                  | ≤600mm                                       | ≤600mm                                       | ≤600mm                                       | ≤600mm                                       | ≤600mm                                       | ≤600mm                                       |
| 卷膜纸芯内径<br>Core diameter                | 76mm   | 76mm   | 76mm   | 76mm   | 76mm   | 76mm   |
| 总功率<br>Total power                     | 6 KW   | 6 KW   | 6 KW   | 6 KW   | 6 KW   | 6 KW   |
| 压缩空气压力<br>Air pressure                 | ≥0.5MPa                                      | ≥0.5MPa                                      | ≥0.5MPa                                      | ≥0.5MPa                                      | ≥0.5MPa                                      | ≥0.5MPa                                      |
| 耗气量<br>Air consumption                 | HS 封合, 0.32NL/循环<br>HS closure, 0.32NL/cycle | HS 封合, 0.32NL/循环<br>HS closure, 0.32NL/cycle | HS 封合, 0.32NL/循环<br>HS closure, 0.32NL/cycle | HS 封合, 0.32NL/循环<br>HS closure, 0.32NL/cycle | HS 封合, 0.32NL/循环<br>HS closure, 0.32NL/cycle | HS 封合, 0.32NL/循环<br>HS closure, 0.32NL/cycle |
| 整机尺寸mm<br>Outer dimensions             | 1800×1270×1615mm                             | 2000×1500×2060mm                             | 1800×1270×1615mm                             | 2000×1500×2060mm                             | 1800×1270×1615mm                             | 2000×1500×2060mm                             |
| 机器重量<br>Weight                         | 700kg  | 800kg  | 700kg  | 800kg  | 700kg  | 800kg  |
| 电压<br>Power supply                     | 3N-PN-50Hz 380V/220V<br>(3相5线)3P 5 wires     | 3N-PN-50Hz 380V/220V<br>(3相5线)3P 5 wires     | 3N-PN-50Hz 380V/220V<br>(3相5线)3P 5 wires     | 3N-PN-50Hz 380V/220V<br>(3相5线)3P 5 wires     | 3N-PN-50Hz 380V/220V<br>(3相5线)3P 5 wires     | 3N-PN-50Hz 380V/220V<br>(3相5线)3P 5 wires     |

中小袋型 Small bag : YS-CS-2520-CP/ 中大袋型 Large bag : YS-CS-3620-CP

| 型号<br>Model                            | YS-CS-2520-CP-A   | YS-CS-3620-CP-A   | YS-CS-2520-CP-GB                             | YS-CS-3620-CP-GB                             | YS-CS-2520-CP-4H-B                           | YS-CS-3620-CP-4H-B                           |
|--|---|---|--|--|--|--|
| 袋型<br>Bag type                         | 枕式袋, 烫边坐底袋<br>Pillow bag & 4 corner<br>seal bag +bottom block | 枕式袋, 烫边坐底袋<br>Pillow bag & 4 corner<br>seal bag +bottom block | 边封叉角坐底袋<br>Gusseted bag +<br>bottom block    | 边封叉角坐底袋<br>Gusseted bag +<br>bottom block    | 烫边坐底袋<br>4 corner seal bag +<br>bottom block | 烫边坐底袋<br>4 corner seal bag +<br>bottom block |
| 包装速度(包/分钟)<br>Speed(bag/min)           | 10-120  | 10-110  | 10-120                                       | 10-110                                       | 10-120                                       | 10-110                                       |
| 枕式袋<br>Pillow bag                      | 袋宽W 60-250<br>袋长L 60-400                                      | 60-360<br>60-500  | 60-250<br>60-400                             | 60-360<br>60-500                             |  |  |
| 叉角袋<br>(0.5正宽 > 0.5侧宽)<br>Gusseted bag | 正宽W 50-220<br>侧宽D 35-110<br>袋长L 60-400                        | 50-330<br>45-140<br>60-500                                    | 50-220<br>35-110<br>60-400                   | 50-330<br>45-140<br>60-500                   | 50-220<br>35-110<br>60-400                   | 50-330<br>45-140<br>60-500                   |
| 烫边袋<br>Corner seal bag                 | 正宽F W 65-170<br>侧宽S W 45-110<br>袋长L 60-400                    | 65-170<br>45-140<br>60-500                                    |  |  | 65-170<br>45-110<br>60-400                   | 65-170<br>45-140<br>60-500                   |
| 薄膜材料<br>packaging material             | OPP/AL/PE,<br>PET/VMPET etc.                                  | OPP/AL/PE,<br>PET/VMPET etc.                                  | OPP/AL/PE,<br>PET/VMPET etc.                 | OPP/AL/PE,<br>PET/VMPET etc.                 | OPP/AL/PE,<br>PET/VMPET etc.                 | OPP/AL/PE,<br>PET/VMPET etc.                 |
| 卷膜外径<br>Film diameter                  | ≤600mm  | ≤600mm  | ≤600mm                                       | ≤600mm                                       | ≤600mm                                       | ≤600mm                                       |
| 卷膜纸芯内径<br>Core diameter                | 76mm  | 76mm  | 76mm   | 76mm   | 76mm   | 76mm   |
| 总功率<br>Total power                     | 6 KW  | 6 KW  | 6 KW   | 6 KW   | 6 KW   | 6 KW   |
| 压缩空气压力<br>Air pressure                 | ≥0.5MPa   | ≥0.5MPa   | ≥0.5MPa                                      | ≥0.5MPa                                      | ≥0.5MPa                                      | ≥0.5MPa                                      |
| 耗气量<br>Air consumption                 | HS 封合, 0.32NL/循环<br>HS closure, 0.32NL/cycle                  | HS 封合, 0.32NL/循环<br>HS closure, 0.32NL/cycle                  | HS 封合, 0.32NL/循环<br>HS closure, 0.32NL/cycle | HS 封合, 0.32NL/循环<br>HS closure, 0.32NL/cycle | HS 封合, 0.32NL/循环<br>HS closure, 0.32NL/cycle | HS 封合, 0.32NL/循环<br>HS closure, 0.32NL/cycle |
| 整机尺寸mm<br>Outer dimensions             | 1800×1270×1615mm  | 2000×1500×2060mm  | 1800×1270×1615mm                             | 2000×1500×2060mm                             | 1800×1270×1615mm                             | 2000×1500×2060mm                             |
| 机器重量<br>Weight                         | 720kg   | 830kg   | 720kg  | 830kg  | 720kg  | 830kg  |
| 电压<br>Power supply                     | 3N-PN-50Hz 380V/220V<br>(3相5线)3P 5 wires                      | 3N-PN-50Hz 380V/220V<br>(3相5线)3P 5 wires                      | 3N-PN-50Hz 380V/220V<br>(3相5线)3P 5 wires     | 3N-PN-50Hz 380V/220V<br>(3相5线)3P 5 wires     | 3N-PN-50Hz 380V/220V<br>(3相5线)3P 5 wires     | 3N-PN-50Hz 380V/220V<br>(3相5线)3P 5 wires     |



背封双列连续式立式机 BACK SEAL, DOUBLE LINES, CONTINUOUS MACHINE



双列机型 Double lanes : YS-BS-14D-CP-P

多列机型 Multiple lanes : YS-BS-6100D-IP-P

|                              |   |  |
|------------------------------|---|--|
| 型号<br>Model                  | YS-BS-2520-CP-A                                 | YS-BS-6100D-IP-P                             |
| 袋型<br>Bag type               | 双列枕式袋<br>Pillow bag, double lines               | 多列枕式袋<br>Pillow bag, Multiple lines          |
| 包装速度(包/分钟)<br>Speed(bag/min) | 10-120 (单列Per line),<br>20-240 (双列Double lines) | 10-80 (单列Per line),                          |
| 袋宽W(mm)                      | 65-140  | 22-60  |
| 袋长L(mm)                      | 60-300  | 60-180                                       |
| 薄膜材料<br>packaging material   | OPP/AL/PE, PET/VMPET etc.                       | OPP/AL/PE, PET/VMPET etc.                    |
| 膜宽<br>Film width             | ≤300mm (单列per line)                             | ≤300mm (单列per line)                          |
| 卷膜外径<br>Film diameter        | ≤400mm  | ≤400mm                                       |
| 卷膜纸芯内径<br>Core diameter      | 76mm  | 76mm   |
| 总功率<br>Total power           | 8 KW  | 8 KW   |
| 压缩空气压力<br>Air pressure       | ≥0.5MPa   | ≥0.5MPa                                      |
| 耗气量<br>Air consumption       | HS 封合, 0.35NL/循环<br>HS closure, 0.35NL/cycle    | HS 封合, 0.45NL/循环<br>HS closure, 0.45NL/cycle |
| 整机尺寸mm<br>Outer dimensions   | 2000×1300×1800mm                                | 1955×2190×2700mm                             |
| 机器重量<br>Weight               | 880kg   | 1300kg                                       |
| 电压<br>Power supply           | 3N-PN-50Hz 380V/220V<br>(3相5线)3P 5 wires        | 3N-PN-50Hz 380V/220V<br>(3相5线)3P 5 wires     |

DOY拉链袋间歇式立式机 DOY BAG WITH ZIP, INTERMITTENT MACHINE



中小袋型 Small bag : YS-BS-2520-IP-ZIP/ 中大袋型 Large bag : YS-BS-3620-IP-ZIP

| 型号<br>Model                    | YS-D-2520-IP-ZIP                             | YS-D-3620-IP-ZIP                             |
|--------------------------------|--|--|
| 袋型<br>Bag type                 | DOY拉链袋<br>DOY zipper bag                     | DOY拉链袋<br>DOY zipper bag                     |
| 包装速度(包/分钟)<br>Speed(bag/min)   | 10-45  | 10-35  |
| 底宽B W(mm)                      | 40-100                                       | 45-120                                       |
| 袋宽W(mm)                        | 60-400                                       | 60-500                                       |
| 袋长L(mm)                        | 60-200                                       | 60-310                                       |
| 薄膜材料<br>packaging material     | OPP/AL/PE, PET/VMPET etc.                    | OPP/AL/PE, PET/VMPET etc.                    |
| 卷膜外径<br>Film diameter          | ≤600mm                                       | ≤600mm                                       |
| 卷膜纸芯内径<br>Core diameter        | 76mm   | 76mm   |
| 拉链材料<br>Zipper material        | 热封性拉链<br>Heat-sealed zipper                  | 热封性拉链<br>Heat-sealed zipper                  |
| 拉链卷外径<br>Zipper diameter       | ≤600mm                                       | ≤600mm                                       |
| 拉链卷芯内径<br>Zipper core diameter | 38mm   | 38mm   |
| 总功率<br>Total power             | 6.5 KW                                       | 6.5 KW                                       |
| 压缩空气压力<br>Air pressure         | ≥0.5MPa                                      | ≥0.5MPa                                      |
| 耗气量<br>Air consumption         | HS 封合, 0.32NL/循环<br>HS closure, 0.32NL/cycle | HS 封合, 0.32NL/循环<br>HS closure, 0.32NL/cycle |
| 整机尺寸mm<br>Outer dimensions     | 1800×1270×1615mm                             | 2000×1500×2060                               |
| 机器重量<br>Weight                 | 720kg  | 830kg  |
| 电压<br>Power supply             | 3N-PN-50Hz 380V/220V<br>(3相5线)3P 5 wires     | 3N-PN-50Hz 380V/220V<br>(3相5线)3P 5 wires     |



**YS-DZ-420 立式真空包装机**  
**Vertical bag vacuum machine**  
 抽真空能力 Pump capacity 20 m³/h  
 工作循环 Working cycle 15-40秒/次 15-40sec/cycle  
 外形尺寸 Dimensions 495×530×800mm  
 电源 Power 220V/50Hz 1.0Kw(可选其它电压) (other voltage optional)  
 重量 Weight 80Kg



**YS-ZKW-850 外抽式真空包装机**  
**Pumping vacuum machine**  
 抽真空能力 Pump capacity 20 m³/h  
 工作循环 Working cycle 40-60秒/次 40-60sec/cycle  
 外形尺寸 Dimensions 1100×900×1700mm  
 电源 Power 220V/50Hz 2.25Kw(可选其它电压) (other voltage optional)  
 重量 Weight 132Kg

YS-ZDZK-320Y / YS-ZDZK-420Y / YS-ZDZK-520Y 连续式真空包装机 (硬膜) Continuous vacuum machine(hard film)



| 型号 Model              | YS-ZDZK-320Y (YS-ZDZK-320R)   | YS-ZDZK-420Y (YS-ZDZK-420R) | YS-ZDZK-520Y (YS-ZDZK-520R) |
|-----------------------|-------------------------------|-----------------------------|-----------------------------|
| 抽真空能力 Pump capacity   | 100m³/h                       | 100-160m³/h (155m³/h)       | 160-200m³/h                 |
| 生产速度 Production speed | 200-400次/小时 200-400times/hour | 200-400次/小时                 | 200-400次/小时                 |
| 外形尺寸 Dimensions       | 4500×1030×1900                | 4900×1130×1900              | 5200×1230×1900              |
| 电源 Power              | 3P AC380V 50Hz 12kW           | 3P AC380V 50Hz 15kW         | 3P AC380V 50Hz 18kW         |
| 重量 Weight             | 1500Kg                        | 1800Kg                      | 2100Kg                      |



**YS-SDZK-400 手推式气调保鲜包装机**  
**Hand push type modified atmosphere packaging machine**  
 压缩空气压力 Pneumatic pressure ≥0.6MPa  
 生产速度 Working cycle 120-240次/小时 120-240 cycle/hour  
 外形尺寸 Dimensions L1100×W1000×H1900mm  
 电源 Power 380V 50Hz 4.0Kw(可选其它电压) (other voltage optional)  
 重量 Weight 200Kg



**YS-TSB-450 半自动气调保鲜包装机**  
**Semi-automatic modified atmosphere packaging machine**  
 压缩空气压力 Pneumatic pressure 0.6-0.8MPa  
 生产速度 Working cycle 120-240次/小时 120-240 cycle/hour  
 外形尺寸 Dimensions L1800×W1400×H1750mm  
 电源 Power 380V 50Hz 8.0Kw(可选其它电压) (other voltage optional)  
 重量 Weight 600Kg



**YS-LXFH-463 连续式气调保鲜包装机**  
**Continuous modified atmosphere packaging machine**  
 压缩空气压力 Pneumatic pressure ≥0.6MPa  
 生产速度 Working cycle 120-240次/小时 120-240 cycle/hour  
 外形尺寸 Dimensions L2300×W850×H1820mm  
 电源 Power 380V 50Hz 5.0Kw(可选其它电压) (other voltage optional)  
 重量 Weight 300Kg



**YS-LXFH-590 连续式气调保鲜包装机**  
**Continuous modified atmosphere packaging machine**  
 压缩空气压力 Pneumatic pressure ≥0.6MPa  
 生产速度 Working cycle 120-240次/小时 120-240 cycle/hour  
 外形尺寸 Dimensions L2600×W1100×H1750mm  
 电源 Power 380V 50Hz 6.0Kw(可选其它电压) (other voltage optional)  
 重量 Weight 500Kg



**YS-TSB-570 连续式气调保鲜包装机**  
**Continuous modified atmosphere packaging machine**  
 压缩空气压力 Pneumatic pressure ≥0.6MPa  
 生产速度 Working cycle 180-240次/小时 180-240 cycle/hour  
 外形尺寸 Dimensions L4370×W1080×H1900mm  
 电源 Power 380V 50Hz 7.0Kw(可选其它电压) (other voltage optional)  
 重量 Weight 1000Kg



# BLISTER PACKAGING MACHINE

## 泡罩机



YS-DPF260 高速自动铝塑铝塑泡罩包装机  
High Speed ALU-PVC-ALU /ALU-PVC(Tropical ALU)  
Blister Packaging machine

|                                     |  |
|-------------------------------------|--|
| 电源及功率<br>Total Power                | 380V 50Hz 28kw   |
| 成型上下加热功率<br>Forming Heating Power   | (4.5×2)kw  |
| 热封加热功率<br>Heat Sealing Power        | 3.5kw  |
| 最大成型面积<br>Max Forming Area          | 250mm×200mm  |
| 最大成型深度<br>Max Forming Depth         | 铝/塑 12mm 铝/铝 10mm<br>ALU/PVC 12mm ALU/ALU 10mm   |
| 最大冲裁速度<br>Punch Frequency           | 铝/塑 130组/分 铝/铝 80组/分 (标准版)<br>ALU/PVC 130blister sheets/min<br>ALU/ALU 80blister sheets/min (Standard) |
| 包装材料规格                              | 药用PVC 260mm×0.25(0.15~0.5)mm<br>热封铝箔 PTP 260mm×0.02mm<br>冷成型铝 260mm×0.12mm                             |
| Packing Material                    | Poison-free PVC 260x0.25(0.15-0.5)mm<br>PTP 260X0.02mm<br>Cold forming Alu alu foil 260x0.12mm         |
| 冷却水耗量<br>Mould cooling              | 0.8m³/h (循环水冷水机)<br>.8M³/h, tap water or recycle water   |
| 气源压力<br>Air pressure                | 0.6-0.8MPa   |
| 整机外形尺寸<br>Machine Overall Dimension | L4700mm×W1220mm×H1910mm (含料斗)<br>(Including feeding hopper)  |
| 整机重量<br>Machine Weight              | 2600kg   |



YS-DPH260 高速自动铝塑泡罩包装机  
High Speed ALU-PVC(Tropical ALU) Blister  
Packaging machine

|                                     |   |
|-------------------------------------|---|
| 电源及功率<br>Total Power                | 380V 50Hz 20kw  |
| 成型上下加热功率<br>Forming Heating Power   | (4.5×2)kw   |
| 热封加热功率<br>Heat Sealing Power        | 3.5kw   |
| 最大成型面积<br>Max Forming Area          | 250mm×200mm   |
| 最大成型深度<br>Max Forming Depth         | 铝/塑 12mm<br>ALU/PVC 12mm                                    |
| 最大冲裁速度<br>Punch Frequency           | 铝/塑 130组/分<br>ALU/PVC 130blister sheets/min                 |
| 包装材料规格                              | 药用PVC 260mm×0.25(0.15~0.5)mm<br>热封铝箔 PTP 260mm×0.02mm       |
| Packing Material                    | Poison-free PVC 260x0.25(0.15-0.5)mm<br>PTP 260X0.02mm      |
| 冷却水耗量<br>Mould cooling              | 0.8m³/h (循环水冷水机)<br>0.8M³/h, tap water or recycle water     |
| 气源压力<br>Air pressure                | 0.6-0.8MPa  |
| 整机外形尺寸<br>Machine Overall Dimension | L3460mm×W1050mm×H1920mm (含料斗)<br>(Including feeding hopper) |
| 整机重量<br>Machine Weight              | 1500kg  |





**YS-DPH300A 高速自动铝塑泡罩包装机**  
High Speed ALU-PVC(Tropical ALU) Blister Packaging machine

|                                     |   |
|-------------------------------------|---|
| 电源及功率<br>Total Power                | 380V 50Hz 26kw  |
| 成型上下加热功率<br>Forming Heating Power   | (4.5×2)kw   |
| 热封加热功率<br>Heat Sealing Power        | 4kw   |
| 最大成型面积<br>Max Forming Area          | 290mm×250mm   |
| 最大成型深度<br>Max Forming Depth         | 铝/塑 12mm 铝/铝 10mm<br>ALU/PVC 12mm ALU/ALU 10mm  |
| 最大冲裁速度<br>Punch Frequency           | 铝/塑 150组/分 铝/铝 100组/分 (标准版)<br>ALU/PVC 150blister sheets/min<br>ALU/ALU 100blister sheets/min (Standard)        |
| 包装材料规格<br>Packing Material          | 药用PVC 300mm×0.25(0.15~0.5)mm<br>热封铝箔 PTP 300mm×0.02mm<br>Poison-free PVC 300x0.25(0.15-0.5)mm<br>PTP 300X0.02mm |
| 冷却水耗量<br>Mould cooling              | 0.8m³/h (循环水冷水机)<br>0.8M³/h, tap water or recycle water   |
| 气源压力<br>Air pressure                | 0.6-0.8MPa  |
| 整机外形尺寸<br>Machine Overall Dimension | L3560mm×W1150mm×H1820mm (含料斗)<br>(Including feeding hopper)   |
| 整机重量<br>Machine Weight              | 2500kg  |



**YS-DPT350 高速自动制托泡罩包装机**  
High Speed Flat-plate Automatic Blister Packaging Machine

|                                     |  |
|-------------------------------------|--|
| 电源及功率<br>Total Power                | 380V 50Hz 15kw   |
| 成型上下加热功率<br>Forming Heating Power   | (3.5×2)kw  |
| 电机总功率<br>Motor Power                | 6kw  |
| 最大成型面积<br>Max Forming Area          | 360mm×200mm  |
| 最大成型深度<br>Max Forming Depth         | 25mm   |
| 最大冲裁速度<br>Punch Frequency           | 130组/分 (标准版)<br>130 blister sheets/min (Standard)                    |
| 包装材料规格<br>Packing Material          | 药用PVC 350mm×0.25(0.15~0.5)mm<br>Poison-free PVC 350x0.25(0.15-0.5)mm |
| 冷却水耗量<br>Mould cooling              | 0.8m³/h (循环水冷水机)<br>0.8M³/h, tap water or recycle water              |
| 气源压力<br>Air pressure                | 0.6-0.8MPa   |
| 整机外形尺寸<br>Machine Overall Dimension | L3460mm×W1050mm×H1910mm (含料斗)<br>(Including feeding hopper)          |
| 整机重量<br>Machine Weight              | 2100kg   |



**YS-DPH300 高速自动铝塑泡罩包装机**  
High Speed ALU-PVC(Tropical ALU) Blister Packaging machine

|                                     |   |
|-------------------------------------|---|
| 电源及功率<br>Total Power                | 380V 50Hz 25kw  |
| 成型上下加热功率<br>Forming Heating Power   | (4.5×2)kw   |
| 热封加热功率<br>Heat Sealing Power        | 4kw   |
| 最大成型面积<br>Max Forming Area          | 290mm×250mm   |
| 最大成型深度<br>Max Forming Depth         | 铝/塑 12mm 铝/铝 10mm<br>ALU/PVC 12mm ALU/ALU 10mm  |
| 最大冲裁速度<br>Punch Frequency           | 铝/塑 130组/分 铝/铝 100组/分 (标准版)<br>ALU/PVC 130blister sheets/min<br>ALU/ALU 100blister sheets/min (Standard)        |
| 包装材料规格<br>Packing Material          | 药用PVC 300mm×0.25(0.15~0.5)mm<br>热封铝箔 PTP 300mm×0.02mm<br>Poison-free PVC 300x0.25(0.15-0.5)mm<br>PTP 300X0.02mm |
| 冷却水耗量<br>Mould cooling              | 0.8m³/h (循环水冷水机)<br>0.8M³/h, tap water or recycle water   |
| 气源压力<br>Air pressure                | 0.6-0.8MPa  |
| 整机外形尺寸<br>Machine Overall Dimension | L3560mm×W1150mm×H1820mm (含料斗)<br>(Including feeding hopper)   |
| 整机重量<br>Machine Weight              | 2500kg  |

泡罩包装机+蜘蛛手+装盒机+捆扎机 生产线  
Full Automatic High Speed Blister Packing Machine And Cartoning Machine Production Line





# CARTONING MACHINE

## 装盒机

### YCZ-125B 全自动装盒机 (装板) Automatic Cartoning Machine(for Blisters)

|                             |   |
|-----------------------------|---|
| 电源及功率<br>Total Power        | 3P AC380V 50Hz 1.5kW  |
| 压缩空气压力<br>Air Pressure      | 0.3-0.5 MPa   |
| 耗气量<br>Air Consumption      | 20-30L/min  |
| 外形尺寸<br>Machine Dimension   | L 1850mm×W 1000mm×H 1650mm  |
| 生产能力<br>Production capacity | 30-100盒/分钟 (根据实际产品确定)<br>30-100 boxes/min(depends on the actual material) |
| 盒子尺寸<br>Size of box         | L(65-125)mm×W(30-83)mm×H(20-53) or (10-43)mm                              |
| 封盒方式<br>Sealing type        | 插舌或喷胶<br>Cartoning Folding or Nordson Gluing                              |



### YCZ-125G 全自动装盒机 (带挡板型) Automatic Cartoning Machine(with In-feed Baffle)

|                             |  |
|-----------------------------|--|
| 电源及功率<br>Total Power        | 3P AC380V 50Hz 1.5kW   |
| 压缩空气压力<br>Air Pressure      | 0.3-0.5 MPa  |
| 耗气量<br>Air Consumption      | 20-30L/min   |
| 外形尺寸<br>Machine Dimension   | L3000mm×W1000mm×H 1650mm   |
| 生产能力<br>Production capacity | 30-85盒/分钟 (根据实际产品确定)<br>30-85 boxes/min(depends on the actual material)            |
| 盒子尺寸<br>Size of box         | L (120-165) or ( 65-125) or ( 48-65) mm×<br>W ( 30-83 ) ×H ( 20-53) or ( 10-43) mm |

### YCZ-125K 全自动装盒机 (针剂型) Automatic Cartoning Machine (for Injection Medicines)

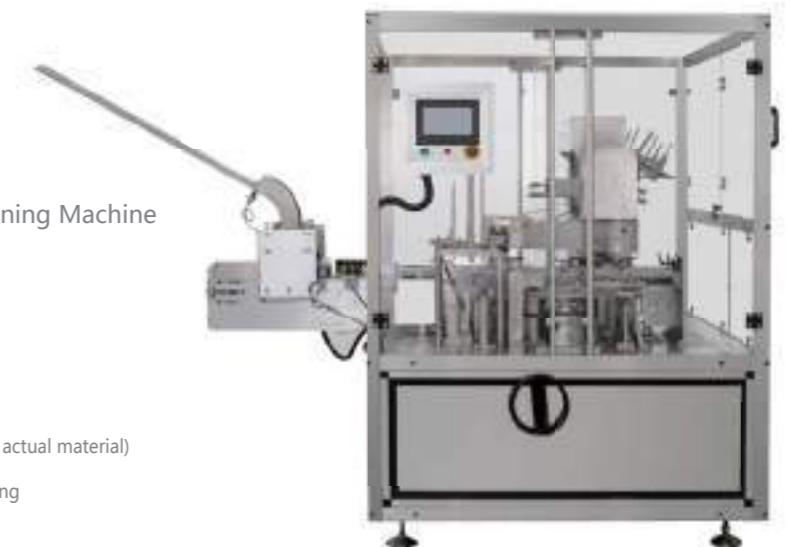
|                             |   |
|-----------------------------|---|
| 电源及功率<br>Total Power        | 3P AC380V 50Hz 1.5kW  |
| 压缩空气压力<br>Air Pressure      | 0.3-0.5 MPa   |
| 耗气量<br>Air Consumption      | 20-30L/min  |
| 外形尺寸<br>Machine Dimension   | L1850mm×W1000mm×H1650mm   |
| 生产能力<br>Production capacity | 30-85盒/分钟 (根据实际产品确定)<br>30-85 boxes/min(depends on the actual material) |
| 盒子尺寸<br>Size of box         | L(120-165)mm×W(30-83)mm×<br>H(20-53)或(13-43)mm                          |

### YCZ-125P 全自动装盒机 (装瓶) Automatic Cartoning Machine(for Bottles)

|                             |   |
|-----------------------------|---|
| 电源及功率<br>Total Power        | 3P AC380V 50Hz 1.5kW  |
| 压缩空气压力<br>Air Pressure      | 0.3-0.5 MPa   |
| 耗气量<br>Air Consumption      | 20-30L/min  |
| 外形尺寸<br>Machine Dimension   | L 2850mm×W 1000mm×H 1650mm  |
| 生产能力<br>Production capacity | 30-100盒/分钟 (根据实际产品确定)<br>30-100 boxes/min(depends on the actual material) |
| 盒子尺寸<br>Size of box         | L(65-125)mm×W(30-83)mm×H(20-53)mm   |

### YCZ-130 全自动装盒机 Full Automatic Cartoning Machine

|                             |   |
|-----------------------------|---|
| 电源及功率<br>Total Power        | 3P AC380V 50Hz 1.5kW  |
| 压缩空气压力<br>Air Pressure      | 0.3-0.5 MPa   |
| 耗气量<br>Air Consumption      | 20-30L/min  |
| 外形尺寸<br>Machine Dimension   | L2165mm×W1200mm×H 1650mm  |
| 生产能力<br>Production capacity | 30-130盒/分钟 (根据实际产品确定)<br>30-130 boxes/min(depends on the actual material) |
| 封盒方式<br>Sealing type        | 插舌或喷胶<br>Cartoning Folding or Nordson Gluing                              |



### YCZ-150 全自动装盒机 Full Automatic Cartoning Machine

|                             |   |
|-----------------------------|---|
| 电源及功率<br>Total Power        | 3P AC380V 50Hz 8.5kW  |
| 压缩空气压力<br>Air Pressure      | 0.3-0.6 MPa   |
| 耗气量<br>Air Consumption      | 15-20L/min  |
| 外形尺寸<br>Machine Dimension   | L4200mm×W1250mm×H1800mm   |
| 生产能力<br>Production capacity | 50-150盒/分钟 (根据实际产品确定)<br>50-150 boxes/min(depends on the actual material) |
| 封盒方式<br>Sealing type        | 插舌或喷胶<br>Cartoning Folding or Nordson Gluing                              |



### YCZ-120S 全自动装盒机 Automatic Cartoning Machine

|                             |   |
|-----------------------------|---|
| 电源及功率<br>Total Power        | 3P AC380V 50Hz 7kW  |
| 压缩空气压力<br>Air Pressure      | 0.3-0.6 MPa   |
| 耗气量<br>Air Consumption      | 5-8L/min  |
| 外形尺寸<br>Machine Dimension   | L4500mm×W1300mm×H1750mm   |
| 生产能力<br>Production capacity | 30-100盒/分钟 (根据实际产品确定)<br>30-100 boxes/min(depends on the actual material) |
| 封盒方式<br>Sealing type        | 喷胶<br>Nordson Gluing  |
| 进料方式<br>Feeding mode        | 直线方式<br>Straight line   |



### YCZ-200 全自动装盒机 Full Automatic Cartoning IV

|                             |   |
|-----------------------------|---|
| 电源及功率<br>Total Power        | 3P AC380V 50Hz 10.5kW   |
| 压缩空气压力<br>Air Pressure      | 0.3-0.6 MPa   |
| 耗气量<br>Air Consumption      | 5-8L/min  |
| 外形尺寸<br>Machine Dimension   | L4500mm×W1450mm×H1700mm   |
| 生产能力<br>Production capacity | 100-180盒/分钟 (根据实际产品确定)<br>100-180 boxes/min(depends on the actual material) |
| 封盒方式<br>Sealing type        | 插舌或喷胶<br>Cartoning Folding or Nordson Gluing                                |



### YCZ-300 全自动装盒机 Full Automatic Cartoning Machine

|                             |   |
|-----------------------------|---|
| 电源及功率<br>Total Power        | 3P AC380V 50Hz 15.5kW   |
| 压缩空气压力<br>Air Pressure      | 0.3-0.6 MPa   |
| 耗气量<br>Air Consumption      | 15-20L/min  |
| 外形尺寸<br>Machine Dimension   | L4500mm×W1450mm×H1800mm   |
| 生产能力<br>Production capacity | 200-260盒/分钟 (根据实际产品确定)<br>200-260 boxes/min(depends on the actual material) |
| 封盒方式<br>Sealing type        | 插舌或喷胶<br>Cartoning Folding or Nordson Gluing                                |



### YCK-400 全自动薄膜捆扎机 Automatic Film Banding Machine

|                              |  |
|------------------------------|--|
| 电源及功率<br>Total Power         | AC220V 50Hz 2.0kW  |
| 压缩空气压力<br>Air Pressure       | 0.3-0.6 MPa  |
| 耗气量<br>Air Consumption       | 5-8L/min   |
| 外形尺寸<br>Machine Dimension    | L 2400mm×W 980mm×H 1780mm  |
| 包装规格<br>Pack format          | 1×5, 1×10, 2×5   |
| 生产能力<br>Production capacity  | 15-20包/分钟 (根据实际产品确定)<br>15-20 bags/min(depends on the actual material) |
| 最大包装物尺寸<br>Max Pack size     | L160mm×W120mm×H300mm   |
| 盒子规格<br>Specification of box | L(80-160)mm×W(30-120)mm×H(15-50)mm,(250-350)g/m²                       |



### YCK-200 全自动薄膜捆扎机 Automatic Film Banding Machine



### BZTZ-40 透明膜三维包装机 Cellophane Wrapping Machine

|                                    |   |
|------------------------------------|---|
| 电源及功率<br>Total Power               | AC220V/380V 50Hz 4.0kW  |
| 压缩空气压力<br>Air Pressure             | 0.4-0.6 MPa   |
| 外形尺寸<br>Machine Dimension          | L 2100mm×W 820mm×H 1700mm   |
| 包装规格<br>Pack size range            | L(110~300)mm×W(55~200)mm×H(30~100)mm                                      |
| 包装速度<br>Production capacity        | 20-30包/分钟<br>20-30 bags/min   |
| 卷膜规格<br>Specification of Roll film | 内径Φ75mm, 外径Φ300mm, 宽度≤430mm(根据产品大小选择)<br>(depends on the actual material) |
| 卷膜材质<br>Material of Roll film      | PVC或BOPP双面热封薄膜, 热封温度100-160°C<br>Heat sealing100-160°C                    |



### BZTZ-80 透明膜三维包装机 Cellophane Wrapping Machine





# SHRINK WRAPPING MACHINE

## 套袋膜包热收缩机



YS-ZB-3246 手动套袋热收缩一体  
Manual Shrink Wrapping Machine



|                                |  |
|--------------------------------|--|
| 型号<br>Model                    | YS-ZB-3246                                       |
| 电源<br>Power                    | 1P AC220V 50Hz 2.1kW                             |
| 工作台面高度<br>Working table height | 920mm  |
| 净重<br>Machine weight           | 71kg   |
| 封边方式<br>Sealing system         | 底部刀片<br>Bottom sealing                           |
| 包装速度<br>Speed                  | 4-8 pieces/min                                   |
| 机器尺寸<br>Machine dimension      | W650×L1120mm                                     |
| 适用膜卷尺寸<br>Film size            | Φ250×W470mm                                      |
| 最大封口尺寸<br>Max sealing size     | W320mm×L460mm                                    |
| 最大包装尺寸<br>Max packing size     | L < 410mm, W < 270mm,<br>H < 150mm & W+H < 350mm |
| 可选项<br>Optional                | 废膜卷绕器<br>Waste film winder                       |

YS-ZB-4255MINI 手动套袋热收缩一体  
Manual Shrink Wrapping Machine



|                                |   |  |
|--------------------------------|---|--|
| 型号<br>Model                    | YS-ZB-4255MINI  | YS-ZB-6084                                       |
| 电源<br>Power                    | 1P AC220V 50Hz 3.0kW  | 3P AC380V 50Hz 7.0kW                             |
| 工作台面高度<br>Working table height | 920mm   | 920mm  |
| 净重<br>Machine weight           | 90kg  | 180kg  |
| 封边方式<br>Sealing system         | 底部刀片<br>Bottom sealing  | 底部刀片<br>Bottom sealing                           |
| 包装速度<br>Speed                  | 4-8 pieces/min  | 4-8 pieces/min                                   |
| 机器尺寸<br>Machine dimension      | W680×L1370mm  | W950×L1870mm                                     |
| 适用膜卷尺寸<br>Film size            | Φ250×W520mm   | Φ250×W820mm                                      |
| 最大封口尺寸<br>Max sealing size     | W420mm×L550mm   | W600×L840mm                                      |
| 最大包装尺寸<br>Max packing size     | L < 500mm, W < 370mm,<br>H < 150mm & W+H < 450mm                            | L < 790mm, W < 550mm,<br>H < 180mm & W+H < 630mm |
| 可选项<br>Optional                | ①废膜卷绕器, ②输送滚筒, ③动力输送网带<br>Waste film winder, roller conveyor, conveyor belt | 废膜卷绕器<br>Waste film winder                       |

YS-ZB-5040A 半自动套袋热收缩一体 (手动)  
Semi-automatic Shrink Wrapping Machine(Manual)



|                                |  |
|--------------------------------|--|
| 型号<br>Model                    | YS-ZB-5040A(5040B)                     |
| 电源<br>Power                    | 3P AC380V 50Hz 7kW                     |
| 气源<br>Air pressure             | -(0.6-0.8MPa)                          |
| 工作台面高度<br>Working table height | 920mm                                  |
| 净重<br>Machine weight           | 250kg                                  |
| 封边方式<br>Sealing system         | 底部刀片<br>Bottom blade                   |
| 包装速度<br>Speed                  | 8-15 pieces/min                        |
| 机器尺寸<br>Machine dimension      | L2400×W780×H1565mm                     |
| 适用膜卷尺寸<br>Film size            | Φ250×W590mm                            |
| 最大封口尺寸<br>Max sealing size     | L480×W380mm                            |
| 最大包装尺寸<br>Max packing size     | L<430mm, W<330mm<br>H<180mm, W+H<410mm |
| 可选项<br>Optional                | 转弯辘道<br>Turning conveyor               |

YS-ZB-5040B 半自动套袋热收缩一体 (气动)  
Semi-automatic Shrink Wrapping Machine(Pneumatic)



|                                |  |
|--------------------------------|--|
| 型号<br>Model                    | YS-ZB-7555A(7555B)                     |
| 电源<br>Power                    | 3P AC380V 50Hz 8kW                     |
| 气源<br>Air pressure             | -(0.6-0.8MPa)                          |
| 工作台面高度<br>Working table height | 920mm                                  |
| 净重<br>Machine weight           | 350kg                                  |
| 封边方式<br>Sealing system         | 底部刀片<br>Bottom blade                   |
| 包装速度<br>Speed                  | 8-15 pieces/min                        |
| 机器尺寸<br>Machine dimension      | L2930×W930×H1565mm                     |
| 适用膜卷尺寸<br>Film size            | Φ250×W670mm                            |
| 最大封口尺寸<br>Max sealing size     | L730×W530mm                            |
| 最大包装尺寸<br>Max packing size     | L<680mm, W<480mm<br>H<180mm, W+H<560mm |
| 可选项<br>Optional                | 转弯辘道<br>Turning conveyor               |

YS-ZB-5040EV 半自动套袋热收缩一体 (气动)  
Semi-automatic Shrink Wrapping Machine(Pneumatic)



|                                |  |
|--------------------------------|--|
| 型号<br>Model                    | YS-ZB-5040EV                           |
| 电源<br>Power                    | 3P AC380V 50Hz 7kW                     |
| 气源<br>Air pressure             | 0.6-0.8MPa                             |
| 工作台面高度<br>Working table height | 920mm                                  |
| 净重<br>Machine weight           | 250kg                                  |
| 封边方式<br>Sealing system         | 底部刀片<br>Bottom blade                   |
| 包装速度<br>Speed                  | 8-15 pieces/min                        |
| 机器尺寸<br>Machine dimension      | L2420×W800×H1380mm                     |
| 适用膜卷尺寸<br>Film size            | Φ250×W590mm                            |
| 最大封口尺寸<br>Max sealing size     | L500×W400mm                            |
| 最大包装尺寸<br>Max packing size     | L<450mm, W<350mm<br>H<150mm, W+H<430mm |
| 可选项<br>Optional                | 转弯辘道<br>Turning conveyor               |

**YS-A2F 半自动捆扎机(高台四腿型)**  
Semi-automatic strapping machine

|                                |  |
|--------------------------------|--|
| 电 源<br>Power                   | AC220V, 50/60Hz, 0.25kW  |
| 捆扎速度<br>Packing speed          | 3秒/道<br>3 seconds/strap  |
| 捆紧力<br>Tension range           | 3-45kg   |
| 工作台面高度<br>Working table height | 750mm  |
| 捆扎带规格<br>PP strap              | 聚丙烯, 宽5mm~15mm, 厚0.5mm~0.8mm<br>width 5~15mm, thickness 0.5~0.8mm                            |
| 带盘规格<br>PP strap spool         | 宽160-190mm, 内径200-210mm, 外径400-450mm<br>W160-190mm, inner dia.200-210mm, outer dia.400-450mm |
| 整机尺寸<br>Machine dimension      | L840mm×W540mm×H750mm   |
| 机器重量<br>Machine weight         | 60kg   |



YS-A2C



YS-A2H



YS-A2L

**YS-T45 半自动捆扎机 (托盘式)**  
Semi-automatic strapping machine(Pallet type)

|                           |  |
|---------------------------|--|
| 电 源<br>Power              | AC220V, 50/60Hz, 0.25kW  |
| 捆扎速度<br>Packing speed     | 3秒/道<br>3 seconds/strap  |
| 捆紧力<br>Tension range      | 3-45kg   |
| 捆扎带规格<br>PP strap         | 聚丙烯, 宽9mm~15mm, 厚0.5mm~0.8mm<br>width 9~15mm, thickness 0.5~0.8mm                            |
| 带盘规格<br>PP strap spool    | 宽160-190mm, 内径200-210mm, 外径400-500mm<br>W160-190mm, inner dia.200-210mm, outer dia.400-500mm |
| 整机尺寸<br>Machine dimension | L770mm×W580mm×H850mm   |
| 机器重量<br>Machine weight    | 78kg   |



**YS-T150 半自动捆扎机 (托盘式)**  
Semi-automatic strapping machine(Pallet type)

|                           |   |
|---------------------------|---|
| 电 源<br>Power              | AC220V, 50/60Hz, 0.6kW  |
| 捆扎速度<br>Packing speed     | 3秒/道<br>3 seconds/strap   |
| 捆紧力<br>Tension range      | 5-150kg   |
| 捆扎带规格<br>PP strap         | 聚丙烯/PET, 宽9mm~19mm, 厚0.5mm~1.0mm<br>PP/PET, width 9~19mm, thickness 0.5~1.0mm   |
| 带盘规格<br>PP strap spool    | 宽160-190mm, PET带卷内径406mm, 外径600mm<br>聚丙烯内径200-210mm, 外径400-500mm<br>W160-190mm, PET inner dia. 406mm, outer dia. 600mm, PP inner dia.200-210mm, outer dia.400-500mm |
| 整机尺寸<br>Machine dimension | L1073mm×W550mm×H1670mm  |
| 机器重量<br>Machine weight    | 140kg   |

**AS-10F 半自动捆扎机(高台四腿型)**  
Semi-automatic strapping machine

|                                |  |
|--------------------------------|--|
| 电 源<br>Power                   | AC220V, 50/60Hz, 0.25kW  |
| 捆扎速度<br>Packing speed          | 3秒/道<br>3 seconds/strap  |
| 捆紧力<br>Tension range           | 5-50kg   |
| 工作台面高度<br>Working table height | 730mm  |
| 捆扎带规格<br>PP strap              | 聚丙烯, 宽5mm~15mm, 厚0.5mm~0.8mm<br>width 5~15mm, thickness 0.5~0.8mm                            |
| 带盘规格<br>PP strap spool         | 宽160-190mm, 内径200-210mm, 外径400-500mm<br>W160-190mm, inner dia.200-210mm, outer dia.400-500mm |
| 整机尺寸<br>Machine dimension      | L850mm×W550mm×H730mm   |
| 机器重量<br>Machine weight         | 80kg   |



AS-10C



AS-10L

**AG02 束带机**  
Automatic banding machine

|                           |   |
|---------------------------|---|
| 电 源<br>Power              | AC220V, 50/60Hz, 0.25kW   |
| 捆扎速度<br>Packing speed     | 26道/分钟<br>26 cycles/min   |
| 捆紧力<br>Tension range      | ≤5kg (可调adjustable)   |
| 捆扎带规格<br>PP strap         | 纸/OPP薄膜带, 宽度为30mm (20mm可选)<br>Paper/OPP, width 30mm(20mm optional)  |
| 带盘规格<br>PP strap spool    | 带卷纸芯内径40mm, 外径180mm, 宽度20/30mm<br>OPP薄膜带内径42mm, 外径160mm, 宽度20/30mm<br>width 20/30mm, paper inner dia. 40mm, outer dia. 180mm<br>OPP inner dia. 42mm, outer dia. 160mm |
| 整机尺寸<br>Machine dimension | L650*W360*H480mm, 40Kg<br>L650*W360*H1140mm, 75Kg   |



外接带舱:  
External dispenser



**AG03 束带机**  
Automatic banding machine

|                           |  |
|---------------------------|--|
| 电 源<br>Power              | AC220V, 50/60Hz, 0.25kW  |
| 捆扎速度<br>Packing speed     | 26道/分钟<br>26 cycles/min  |
| 捆紧力<br>Tension range      | ≤5kg (可调adjustable)  |
| 捆扎带规格<br>PP strap         | OPP薄膜带, 宽度为12mm<br>OPP, width 12mm   |
| 带盘规格<br>PP strap spool    | OPP薄膜带内径40mm, 外径160mm, 宽度12mm<br>width 12mm, inner dia. 40mm, outer dia. 160mm |
| 整机尺寸<br>Machine dimension | L380*W280*H415mm, 18Kg<br>L520*W280*H505mm, 22Kg                               |







MH-FG-2300A 龙门旋臂式拉伸薄膜缠绕机  
Pallet stretch wrapper

|                                 |   |
|---------------------------------|---|
| 电 源<br>Power                    | 3P AC 380 V 50Hz  |
| 气 源<br>Air pressure             | 0.4~0.6 MPa   |
| 旋转速度<br>Rotating speed          | 0~22 rpm  |
| 旋转内径<br>Rotating inner diameter | Φ1700 mm  |
| 立柱高度<br>Mast height             | 2400 mm<br>( 可选optional 2000/2700/3000/3200/3400 )                          |
| 有效高度<br>Effective height        | 立柱高度减400mm<br>Mast height -400mm  |
| 包装材料<br>Packaging material      | 宽≤500 mm, 外直径≤Φ280mm, LLDPE 拉伸薄膜<br>W≤500 mm, outer dia.≤Φ280 mm LLDPE film |



MH-FG-700A 带液压车悬臂式拉伸薄膜缠绕机  
Arm rotation forklift wrapper

|                                 |   |
|---------------------------------|---|
| 充电电源<br>Power Voltage           | 1P, AC 220V/110V, 50/60 Hz<br>1P AC 220/110V 50/60Hz                                |
| 转盘速度<br>Speed of rotary         | 0~10 rpm<br>0~10 r/min  |
| 旋转内径<br>Rotating inner diameter | Φ1700 mm<br>Φ1700mm   |
| 叉脚宽度<br>Forks width             | 540 mm  |
| 压车承重<br>Capacity                | 2000 kg   |
| 包装材料<br>Packaging material      | 宽≤500 mm, 外直径≤Φ200 mm LLDPE 拉伸薄膜<br>Width≤500mm, outer diameter ≤Φ200mm, LLDPE film |
| 机器尺寸<br>Machine dimension       | L1750×W1090×H2100   |
| 噪 声<br>Noise                    | ≤75 dB ( A )  |
| 环 境<br>Environment              | 湿度≤90%, 温度 -10~40°C<br>Humidity ≤ 90%, Temperature -10-40°C                         |

MH-FG-2300B 单立柱旋臂式拉伸薄膜缠绕机  
Pallet stretch wrapper

|                                 |   |
|---------------------------------|---|
| 电 源<br>Power                    | 3P AC 380 V 50Hz  |
| 旋转速度<br>Rotating speed          | 0~15 rpm  |
| 旋转内径<br>Rotating inner diameter | Φ2000 mm  |
| 立柱高度<br>Mast height             | 3650 mm   |
| 包装材料<br>Packaging material      | 宽≤500 mm, 外直径≤Φ280mm, LLDPE 拉伸薄膜<br>W≤500 mm, outer dia.≤Φ280 mm LLDPE film |
| 机器尺寸<br>Machine dimension       | L4000mm×W2000mm×H3100mm   |
| 噪 声<br>Noise                    | ≤75 dB ( A )  |
| 环 境<br>Environment              | 湿度≤90%, 温度 -10~40°C<br>humidity≤90%, Temp -10~40°C                          |



MH-FG-800B 带压顶式小型拉伸薄膜缠绕机  
Pallet stretch wrapper(top presser)

|                            |  |
|----------------------------|--|
| 电 源<br>Power               | 1P AC 220V 50 Hz   |
| 气 源<br>Air pressure        | 0.4~0.6MPa   |
| 转盘速度<br>Speed of turntable | 0~20 rpm   |
| 转盘直径<br>Dia. of turntable  | Φ400 mm、Φ600 mm  |
| 气缸行程<br>Air cylinder       | 500 mm   |
| 承 重<br>Capacity            | 60 kg  |
| 包装材料<br>Packaging material | 宽≤500 mm, 外直径≤Φ280mm LLDPE 拉伸薄膜<br>W≤500 mm, outer dia.≤Φ280 mm LLDPE film |
| 噪 声<br>Noise               | ≤75 dB ( A )   |
| 环 境<br>Environment         | 湿度≤90%, 温度 -10~40°C<br>Humidity ≤ 90%, Temperature -10-40°C                |



MH-FG-2400 旋臂固定式缠绕机  
Arm rotation fixed wrapper

|                                 |   |
|---------------------------------|---|
| 电 源<br>Power                    | 3P AC 220 V 50Hz  |
| 气 源<br>Air pressure             | 0.4~0.6 MPa   |
| 旋转速度<br>Rotating speed          | 0~12 rpm  |
| 旋转内径<br>Rotating inner diameter | Φ1700 mm  |
| 立柱高度<br>Mast height             | 2200 mm   |
| 包装材料<br>Packaging material      | 宽≤500 mm, 外直径≤Φ280mm, LLDPE 拉伸薄膜<br>W≤500 mm, outer dia.≤Φ280 mm LLDPE film |
| 机器尺寸<br>Machine dimension       | L2080mm×W1640mm×H2850mm   |
| 环 境<br>Environment              | 湿度≤90%, 温度 -10~40°C<br>humidity≤90%, Temp -10~40°C                          |



MH-FG-900B 带夹包杆式小型拉伸薄膜缠绕机  
Power pre-stretch automatic case stretch wrapper

|                            |  |
|----------------------------|--|
| 电 源<br>Power               | 1P AC 220V 50 Hz   |
| 转盘速度<br>Speed of turntable | 0~20 rpm   |
| 有效宽度<br>Effective width    | 400mm  |
| 有效高度<br>Effective height   | 850mm  |
| 有效规格<br>Valid package size | L ( 250-1200 ) mm×W ( 20-400 ) mm×H ( 200-850 ) mm                         |
| 承 重<br>Capacity            | 60 kg  |
| 包装材料<br>Packaging material | 宽≤500 mm, 外直径≤Φ200mm LLDPE 拉伸薄膜<br>W≤500 mm, outer dia.≤Φ200 mm LLDPE film |
| 机器尺寸<br>Machine dimension  | L1600×W600×H1740   |



# ROBOT & SPIDER ROBOT 机器人和蜘蛛手



## YSR-2-20-C 两轴机器人 Robot

|                              |                                     |
|------------------------------|-------------------------------------|
| 额定负载<br>Rated payload        | 20kg                                |
| 额定功率<br>Power supply         | 3.0kw                               |
| 最大工作半径<br>Reach              | 1105mm                              |
| 安装方式<br>Mounting position    | 吊装式Ceiling                          |
| 自重<br>Weight of robot        | 155Kg                               |
| 重复定位精度<br>Pose repeatability | ±0.5mm                              |
| 占地面积<br>Floor area           | 320mm×440mm                         |
| 轴运动<br>Axis data             | A2 +20° to -105°<br>A3 +60° to -90° |
| 最大速度<br>Max speed            | A2 170°/s<br>A3 170°/s              |

## YSR-2-60-F 两轴机器人 Robot

|                              |                                     |
|------------------------------|-------------------------------------|
| 额定负载<br>Rated payload        | 20-60kg                             |
| 额定功率<br>Power supply         | 5.0kw                               |
| 最大工作半径<br>Reach              | 1800mm                              |
| 安装方式<br>Mounting position    | 落地式Floor                            |
| 自重<br>Weight of robot        | 200Kg                               |
| 重复定位精度<br>Pose repeatability | ±0.5mm                              |
| 占地面积<br>Floor area           | 700mm×700mm                         |
| 轴运动<br>Axis data             | A2 +90° to -35°<br>A3 +15° to -110° |
| 最大速度<br>Max speed            | A2 105°/s<br>A3 105°/s              |



## YSR-2-120-F 两轴机器人 Robot



## YSR-2-600-F 两轴机器人 Robot

|                              |                                     |
|------------------------------|-------------------------------------|
| 额定负载<br>Rated payload        | 600kg                               |
| 额定功率<br>Power supply         | 15.4kw                              |
| 最大工作半径<br>Reach              | 3150mm                              |
| 安装方式<br>Mounting position    | 落地式Floor                            |
| 自重<br>Weight of robot        | 1400Kg                              |
| 重复定位精度<br>Pose repeatability | ±0.5mm                              |
| 占地面积<br>Floor area           | 700mm×700mm                         |
| 轴运动<br>Axis data             | A2 +90° to -40°<br>A3 +15° to -115° |
| 最大速度<br>Max speed            | A2 65°/s<br>A3 65°/s                |



## YSR-2-220-F 两轴机器人 Robot

