

清峰机械



智能型全自动粘箱机配置单

用途与特点:

QF-智能型全自动粘箱机，由真空送纸部，涂胶折叠部，和计数堆积输出部3部分组成。

电机全部采用台湾晟邦电机，变频电机除外。变频调速，标配PLC触摸屏控制(双PLC,双触摸屏)，整机电动调整，只需在触摸屏上输入三个数据（长，宽，高的尺寸），机器自动调整到位。操作简单可靠，粘箱最高车速度180米/分钟,平均粘箱速度150米/分钟；高速节能，节省人工成本。

Intelligent fully automatic box machine configuration list

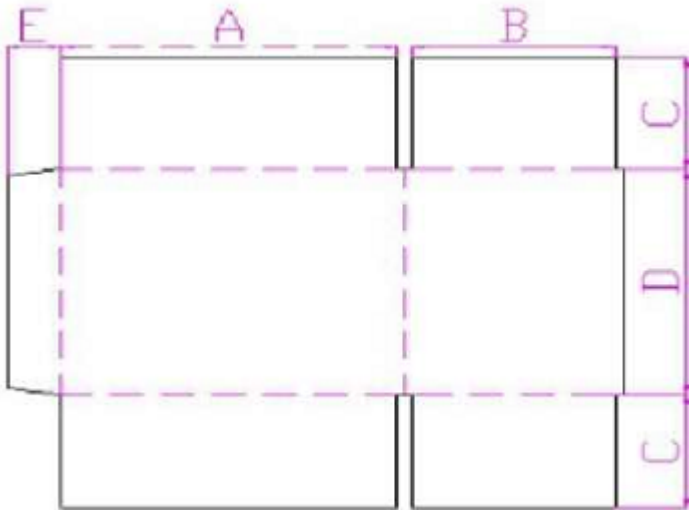
Purpose and characteristics:

QF-intelligent automatic adhesive box machine consists of 3 parts: vacuum paper feeding part, glue folding part, and counting accumulation output part.

All motors are made of Taiwan Shengbang motors, except for frequency conversion motors. Frequency frequency conversion motors. Frequency conversion speed regulation, standard PLC touch screen control (double PLC, dual touch screen), electric adjustment of the whole machine only need to enter three data (length, width, height size) on the touch screen, and the machine will automatically adjust in place. The operation is simple and reliable,

with a maximum speed of 180 m/minute and an average speed of 150 m/min; high speed and energy saving, saving labor costs.

Main technical parameters:
主要技术参数:



型号model	QF1228
最大纸张尺寸Max. paper size (A+B) *2(mm)	2800
最小纸张尺寸Min. paper size (A+B) *2(mm)	420
最大纸箱长Max. paper length Amm	900
最小纸箱长Min. Paper length Amm	130
最大纸箱宽Max. Paper width Bmm	650
最小纸箱宽 Min. Paper width Bmm	80
最大纸张高max. Paper high (C+D+C) (mm)	1200
最小纸张高min. Paper high (C+D+C) (mm)	170
最大摇盖尺寸 max. Paper flap C(mm)	350
最小摇盖尺寸 min. Paper flapC(mm)	50

最小高度min. Paper high D(mm)	100
------------------------------	------------

主要结构:

Main structure:

送纸部:

Feeding unit:



吸风进纸能更好的适应弯曲纸板；变频控制，使送纸部可单独控制进纸，操作简便可靠；不锈钢涂胶轮，耐腐蚀、耐磨损、涂胶均匀、节约胶水，用胶量大约是人工涂胶量的三分之一。The suction paper feed can better adapt to the curved cardboard; frequency conversion control allows the paper feeding part to control the paper separately, which is simple and

reliable to operate; the stainless steel glue coating wheel is corrosion-resistant, wear-resistant, uniformly applied, and saves glue, and the amount of glue used is about one-third of the manual glue applied.

涂胶折叠部:

Folding unit :



进口耐磨橡胶皮带输送纸板，使用更长久；纸板矫正装置和压线装置，压线轮可调，适合纸板厚度 2 - 8 mm；二次压痕机构，可对压痕质量不佳的纸板进行二次压痕。

Imported wear-resistant rubber belt transports cardboard for longer use; cardboard correction device and wire pressing device, adjustable wire pressing wheel, suitable

for cardboard thickness 2-8mm; secondary indentation mechanism, can secondary indentation of cardboard of poor indentation quality.

计数堆积输出部:

Counting unit:



large deviation ports.

1.计数堆码原理简单可靠，堆积部整体电动横移，保证偏口较大纸箱可以稳定输出。

The principle of counting stacking code is simple and reliable, and the overall electric transverse movement of the stacking part ensures the stable output of cartons with



2.新型机械手设计保证较小纸板堆叠稳定。2. The new manipulator design ensures the stability of smaller cardboard stacking.



3.进纸皮带全方位电动调整，操作简单，使用方便。3. The paper feed belt is fully electrically adjusted, which is simple to operate and easy to use.

4.校正部挡板一键换单，自动调节。具有纠偏功能，偏差可调。计数推出采用气动方式，动作准确快速。4.

The baffle of the correction department changes the order with one button and automatically adjusts it. It has a deviation correction function and adjustable deviation. The counting is launched in a pneumatic way, and the action is accurate and fast.

5.独特输出部双皮带传动，可以配合任何打包机工作，适用范围



更加广泛。5. The unique output double belt drive can work with any baler and has a wider range of applications.

智能型全自动粘箱机电器控住部分简介

整机电器参照欧洲标准，本着工作安全可靠、操作维护方便的理念设计生产。采用彩色触摸人机介面及西门子主控PLC控制（双触摸屏，双PLC），操作便捷，人性化强，触摸人机介面及主控PLC上均预留有程序升级接口，方便以后设备升级使用。整机主动力电机变频调速，使用西门子牌变频器，速度平稳，环保节能（节电30%左右），并且对电机全保护（当电压过高或过低时，当电机过热或电流过大时，变频器自动报警并停止动行，有相应的报警代码显示出来）。整机所有控制电机用的接触器都使用的西门子交流接触器，并且加装了热过载继电器，当电机负载过重时保护电机。机器各部分连接处电线都采用航空插件连接，拆装维护方便。机器前后两处都安装有操作按钮，主要功能在机器的前面和后面两地都能操作，并且操作按钮面板选用不锈钢板，美观大方，面板上使用图形和文字同时说明按钮的便用功能，通俗易懂。

Introduction to the electrical control part of the intelligent fully automatic adhesive box machine

The whole machine electrical appliance is designed and produced according to European standards and in accordance with the concept of safe and reliable work and convenient operation and maintenance. It adopts the color touch man-machine interface and Siemens main control PLC control (dual touch screen, dual PLC), which is easy to operate and humane. The touch man-machine interface and the main control PLC are reserved with a program upgrade interface, which is convenient for future equipment upgrade. The whole machine's main motor frequency conversion speed regulation, using Siemens brand frequency converter, stable speed, environmental protection and energy saving (about 30% power saving), and full protection to the motor (when the voltage is too high or too low, when the motor overheats or the current is too large, the frequency converter automatically alarms and stops moving, and the corresponding alarm code is displayed). All contactors used to control the motor of the whole machine use Siemens AC contactors, and a thermal overload relay is installed to protect the motor when the motor is overloaded. The wires at the connection of each part of the machine are connected by aviation plug-ins, which is convenient for disassembly and maintenance. Operation buttons are installed in both

the front and rear of the machine. The main functions can be operated in the front and back of the machine, and the operation button panel is made of stainless steel plate, which is beautiful and generous. The panel uses graphics and text to illustrate the convenient function of the button, which is easy to understand.

整机主要电器元件使用品牌如下: The brands of the main electrical components :

	成件名称 name	品牌 brand
1	触摸屏 touch screen	西门子Siemens
2	PLC	西门子Siemens
3	变频器 inverter	西门子Siemens
4	中间继电器 intermediate relays	西门子Siemens
5	光电开关 photoelectric switch	奥拓尼克斯 autonix
6	接近开关 proximity switch	奥拓尼克斯 autonix
7	开关电源 power switch	台湾明伟 Taiwan mingwei
8	热过载继电器 Thermal overload relay	西门子 Siemens
9	断路器 Circuit breaker	西门子Siemens
10	保护器 Protector	西门子 Siemens
11	行程开关 Travel switch	欧姆龙 Omron
12	接触器 contractor	西门子 Siemens
13	按钮开关 button switches	施耐德 Schneider

用工人数: 2-4人.

Employee needed: 2-4 people

全自动三部分外形尺寸

Dimensions:

送纸部: 长1800mm 宽3400mm 高1700mm 重量1.5吨

拆叠部: 长6000mm 宽1900mm 高1750mm 重量2.5吨

堆积部: 长4000mm 宽2200mm 高1650mm 重量2.8吨

Paper feeding department: length 1800mm width 3400mm height 1700mm weight 1.5 tons

Demolition Department: 6,000mm long, 1900mm wide, 1750mm high, 2.5 tons
 Accumulation Department: 4000mm long, 2200mm wide, 1650mm high, 2.8 tons

整机主要电机成件使用品牌如下:

The brands of the main motor parts of the whole machine are as follows:

成件名称 name	品名 name
1.主要电机 main motor	台湾晟邦 Taiwan shengbang
3.风机	河北 hebei

整机主要皮带成件使用品牌如下:

Belt and brands:

成件名称 name	品名 name
1.前送纸皮带 from feeding belt	德国西格林 German west green
2.同步带 timing belt	德国森力 German senli
3.两侧皮带 side belts	德国西格林 German west green

整机主要轴承成件使用品牌如下:

Main bearings and brands:

成件名称 name	品名 name
带座轴承 Bearing with seat	福建FK Fujian FK



創新包裝科技
打造一流品牌

Specifications

規 格 書

Messrs.

客戶

Mr. Salar

Contract No.

合同號

XG20231106MU

Machine Type

機械型式

four color printing slotting die cutting folder gluing

strapping inline

Machine Model

機械型號

XG-YL 0922 type

NO. of Machines

機械台數

1

unit(s)

台

Deliver

納入



创新包装科技
打造一流品牌

ABOUT US

Hebei Xinguang Carton Machinery Manufacturing Co., Ltd. is located in the south of the capital Beijing, north of Jinan. The transportation is very convenient. It is a large-scale manufacturing factory for carton machinery and printing machine. Our company has complete machine tool line, high degree of specialization and rich manufacturing experience. Our company has strong technical strength, advanced testing methods, complete management system, and we has passed ISO9001: 2000 international quality management system certification, (registration number: 03605Q10355ROS).

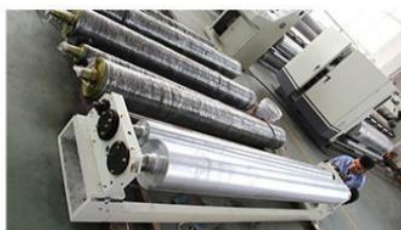
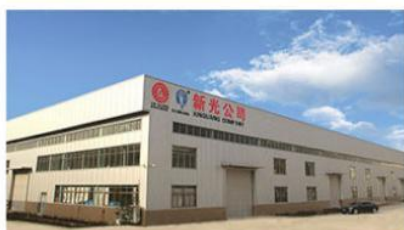
Our company has more than 30 years of R & D and manufacturing experience, the company has been adhering to the "quality-guarantee, service-oriented, customer-oriented as service concept.

Based on the present, looking to the future, in the face of the current advancement of carton machinery, we will actively cooperate with more full enthusiasm, strengthen internal management, expand the market, increase scientific research, develop new product types, and improve existing products. The performance indicators, and strive to achieve high quality and low price products and comprehensive after-sales service to truly make you 100 assured, a thousand satisfaction, truly achieve our win-win!



XINGUANG MACHINERY

Focus on serving the machinery industry





创新包装科技
打造一流品牌

XG-YL 0922 type four color printing slotting die cutting folder gluing strapping inline configuration



Hebei Xinguang Carton Machinery Manufacture Co., Ltd

Company Address: 3 km south of Dongguang County, Cangzhou, Hebei, 10 5 West of National Road



创新包装科技
打造一流品牌

XG-YL 0922 type four color printing slotting die cutting machine



※Main technical parameters and requirements of printing machine

Model: XG0922-2600 printing machine:

1	Maximum mechanical speed (sheets / min)	280	2	Maximum paper feed size (length * width)	900*2300
3	Sheet feeding size (length * width)	1100*2300	4	Maximum printing size (length * width)	900*2200
5	Minimum paper	260*600	6	Standard printing	7.2



创新包装科技
打造一流品牌

	feed size (length * width)			plate thickness	
7	Wall panel spacing	2400	8		
Minimum slot spacing	Positive knife A*B	180*180			
	Negative knife A*B	225*110			

Customer-supplied part

1. Printing resin plate, printing plate lining, printing film base, squeegee strip
2. Air compressor and air pipe.
3. Connect the power supply and wires to the operation cabinet and line pipes.
4. Water sources, water pipelines, buckets, etc.
5. Water, electricity and gas foundation plane installation civil works.
6. The degree of bending of the cardboard used for testing should not exceed the bending coefficient 0.015 (this coefficient refers to the cardboard bending height difference when the cardboard width is 600mm), for example, the cardboard is 600mm wide and the bending height does not exceed 9mm.
7. Engine oil, lubricating oil and grease for equipment.
8. Food and accommodation for installation and commissioning personnel. And provide installation workers to cooperate with the installation.

Specification	Equipment name	Unit	Quantity	Remark
Leading edge feeding	Four servo leading edge+ Pressure-free paper feeding department	Set	1	<p>Main control computer and man-machine interface control system.</p> <p>Four-axis leading edge paper feeding system and vacuum suction pressure-free paper pulling system ensure accurate and stable paper feeding.</p> <p>Side and front baffle computer traverse system, control is stable and precise.</p> <p>The dust removal brush and dust suction device can be raised and lowered, and the dust removal is perfect.</p> <p>The wall panel is 60mm thick.</p>
Printing unit	Printing Department	Set	4	<p>The printing phase is controlled by the main control computer and the unit man-machine interface.</p> <p>The paper guide wheel fast traverse mechanism, with scale display, gap self-locking adjustment device.</p> <p>Equipped with a bridge guide plate to make cardboard conveying more stable</p> <p>Reels on both sides to lock the plate, fast hanging plate drive, automatic detection and reset, with auto gap adjustment.</p>
Slotting part	Computer gang knife slotting part (Longitudinal double pre-compression)	Set	1	<p>The slotting phase is controlled by the main control computer and the unit man-machine interface</p> <p>Slotted box height adjustment adopts internal gear mechanism, independent drive box control.</p> <p>Pre-pressing wheel, crimping wheel, slotting cutter head, electric position and setting adjustment.</p> <p>Precise linear guide and cross-axis linkage displacement system, stable and precise.</p> <p>The large displacement mechanism of the middle knife has strong production adaptability.</p>



创新包装科技
打造一流品牌

Die cutting unit	die-cutting + independent servo drive	set	1		<p>The die cutting phase is controlled by the main control computer and the unit man-machine interface.</p> <p>The rubber pad roller's automatic horizontal movement mechanism extends the service life of the rubber pad.</p> <p>Taiwan's Chao Nai quick-change rubber pad, rubber pad correction mechanism.</p> <p>Compensation of mechanical speed difference to ensure die-cutting accuracy.</p>
Folder gluing inline		Set	1		<p>designed and manufactured to match printing, grooving, folding, bonding and stacking. It has the ability to carry, apply glue, fold, and form several layers automatically. With PLC control, touch screen operation and pre-storage and management of orders. Its high speed production capacity, fast changing orders and good stability can meet the shorter and shorter lead time requirements of our carton customers.</p> <p>This machine features:</p>
PE bundle machine line		Set	1		Automatic strapping the carton box



创新包装科技
打造一流品牌

Paper feeding unit



※Structural features:

★Front edge roller paper feeding system

[1] Servo pressure-free double bellows extension paper feeding system, frequency conversion control fan 7.5KW, can adjust the air volume according to different cardboard bending conditions, to ensure smooth paper feeding, automatically adjust the paper feeding stroke, avoid cardboard flattening, and use brush Dust removal and equipped with a powerful negative pressure suction dust removal fan and brush to remove dust, paper scraps and other debris on the surface of the cardboard to improve printing quality.

[2] The lifting and falling of the paper are driven by air cylinders, which are quick and labor-saving.

[3] Simple operation and high precision. Strong production adaptability. Speed-increasing transmission is more stable, suitable for warping, thin cardboard transmission, and the effect is

obvious.

[4] The positions of the side baffle and the rear baffle box are electrically adjusted by the screw rod; the upper and lower gap positions of the front baffle are manually adjusted synchronously.

[5] Interleaved paper feeding device (continuous or interleaved paper feeding can be selected as required).

[6] PLC control, color man-machine interface, menu storage, printing plate correction, printing speed, quantity, time and various operations.

★Automatic zero reset device

[1] Computer-based automatic reset to the paper feeding section.

※ Main purchased parts, raw materials and origin:

Main part name	Origin	Material model
Leading edge feed	Shandong	Komori Seiko 
Main motor	Hengshui Yongshun	Inverter motor 
Adsorption fan	Hengshui Yongshun	7.5 kw
Dust removal fan	Hengshui Yongshun	4kw
Wall panel	Self-produced	Gray cast iron HT250
Bearing	Ha, Wa, Luo	
Pneumatic Components	Zhejiang Sono	
Frequency converter	Delta	
PLC	Delta	
Low-voltage electrical appliances	Siemens	

Printing Department



※ Structural features:

★ Printing roller (plate roller)

- 1 The outer diameter is $\varnothing 304$ mm with the plate.
- 2 The surface of high-quality steel is ground, axial reference scale, and hard chrome plated.
- 3 Do balance correction, stable operation, suitable for high-speed operation.
- 4 Ratchet fixed scroll plate, with hanging plate groove, suitable for quick plate change.
- 5 Full-page hanging plate slot, suitable for 10 mm hanging plate.
- 6 Loading and unloading the printing plate, the foot switch electrically controls the forward and reverse rotation.
- 7 The printing roller is automatically moved horizontally in the axial direction, and the maximum movement is 10mm . (Electric adjustment, PLC control, man-machine interface display movement data).

★ Printing roller

- 1 The outer diameter is $\varnothing 156$ mm.
- 2 The surface of high-quality seamless steel pipe is ground, dynamic balance correction, stable operation, hard chrome plating.



创新包装科技
打造一流品牌

3 The printing press roller cross slider type gap dial can be adjusted automatically, the adjustment range is 0 ~ 12 mm. The gear gap is not affected during adjustment, and the transmission accuracy is ensured.

★ Two-way ink fixing system for steel anilox roller and rubber roller

1 The outer diameter is \varnothing 188 mm.

2 The surface of the steel pipe is ground, reticulated, and plated with hard chromium.

3 Do balance correction, stable operation.

4 The number of meshes is 180 , 200 , 250 , 280 , 350 , 550 , 700 lines / inch.

5 Cooperate with the pneumatic automatic lifting device of the paper feeding system (the anilox roller descends indirectly during paper feeding

When in contact with the printing plate, the anilox roller rises and separates from the printing plate when paper feeding is stopped)

6 The anilox roller is equipped with a wedge-type overrunning clutch, which is convenient and quick to distribute and wash the ink.

7 The outer diameter of the rubber roller is \varnothing 156 mm.

8 The surface of the steel pipe is wrapped with wear-resistant rubber, and the balance is corrected.

9 The rubber is specially ground for medium and high, with good ink transfer effect. Fast gap fine adjustment self-locking device to ensure uniform ink application. The uniform ink distribution system has a good ink transfer effect and prolongs the life of the rubber roller.

★ Ink circulation

1 Pneumatic diaphragm pump, stable ink supply, simple operation and maintenance.

2 Ink filter to filter impurities.

3 Two-way ink supply system, ink supply and return flow are more stable.

★ Printing phase fixing device

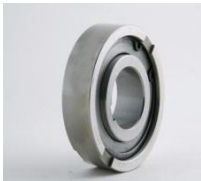
1 Cylinder type brake mechanism.

2 When the machine is separated or the phase is adjusted, the brake mechanism restricts the machine's rotation and maintains the original fixed point of the gear position.

3 Electromagnetic clutch and brake positioning system, efficient and stable. (Optional)

※ Main purchased parts, raw materials and origin:

Main part name	Origin	Material model
Steel anilox roller	Dalian Junfeng	$\phi 188\text{mm}$ 
glue roll	Jizhou	$\phi 156\text{ mm}$ 
Bottom printing roller	45 #Seamless steel pipe	$\phi 156\text{ mm}$ 
Ink uniforming motor	Taiwan	400 w 
Gear reducer	Guangdong Rectification	0.37 kw 
Transmission gear	40 Cr	Thickness 60 mm 
Pneumatic Components	Airtac, Taiwan	
Pneumatic single diaphragm pump	Wuhan Golden Yangtze River	

Overrunning clutch	Xianyang	
--------------------	----------	---

Slotted part



※ Structural features:

★ Single axis full computer control

- 1 The alloy steel material is heat-treated and ground tooth-shaped grooving knife, with excellent hardness and toughness.
- 2 The alloy steel material is heat-treated and ground with a two-piece trimming knife, with a sharp edge and high precision.
- 3 The horizontal movement position of the crimping wheel, paper guide wheel, and slotting tool holder is fully computer-controlled, electric linkage adjustment, scale display size, can be used as order storage.

4 The horizontal movement position of the pre-pressing wheel, crimping wheel, paper guide wheel, and slotting tool holder is controlled by PLC and touch screen.

5 Adopting linear guide rail technology, stable and accurate, to ensure the accuracy of the slotting phase. Ensure the smoothness of the groove.

6 The large displacement mechanism of the middle knife, trimming and cutting device, and strong production adaptability. Snap-fit single-blade trimming knife, trimming is smooth and cost-saving. Standard configuration: front and rear knife coaxial type-easy to adjust and control.

★ **Slotting phase adjustment mechanism**

1 Planetary gear structure.

2 The slotting phase adopts servo motor and PLC , touch screen control and electric digital 360 degree adjustment (running, stopping, and adjustable); it can be used for order storage.

★ **Portable hole die holder**

1 The width of the upper mold base of the portable hole is 100mm , and the width of the lower mold base is 100mm with rubber pad.

2 The size of the portable hole mold is 25mmX90mm.

✂ **Main purchased parts, raw materials and origin:**

Main part name	Origin	Material model
Gear reducer	Guangdong Rectification	0.37 kw  <small>alibaba.com.cn</small>
Split motor	Taiwan Taiwan	1.5 kw  <small>深圳市景南自动化工程有限公司</small>

Die cutting group



创新包装科技
打造一流品牌



★ Knife die roll (lower roll)

- 1 The outer diameter is $\phi 255.2$ mm (without cutter die) .
- 2 The surface of cast iron materials is ground, hard chrome plated, balance correction, and operation stability is increased.
- 3 The distance between the fixed screw holes of the knife mold, the axial direction is 100mm , and the radial direction is 18 equally divided. Applicable die height is 25.4mm .
- 4 Wood template thickness: 16mm(for three-layer cardboard)
13 mm (for five-layer cardboard)

★ Cushion roller (upper roller)

- 1 The outer diameter is $\phi 272$ mm .
- 2 Quick-change rubber pads, wear resistance and long life.
- 3 The surface of cast iron material is ground and plated with hard chromium.
- 4 Balance correction, increase operation stability.



创新包装科技
打造一流品牌

5 Electric adjustment of the gap between the die roller and the die roller, the adjustment range is 0-16mm .

6 The thickness of the rubber pad is 8mm . Width 250mm .

7 Mechanical type horizontal 40mm swimming device. (Adjustable swimming speed)

★ Turning mechanism

1 Electric turning rubber pad, fast and efficient correction.

2 Improve the service life of the rubber pad.

★ Die-cutting phase adjustment mechanism


1 Planetary gear structure.

2 The die-cutting phase adopts servo motor and PLC , touch screen control and electric digital 360 degree adjustment (running, stopping, and adjustable); it can be used for order storage.

★ Servo motor independent drive device

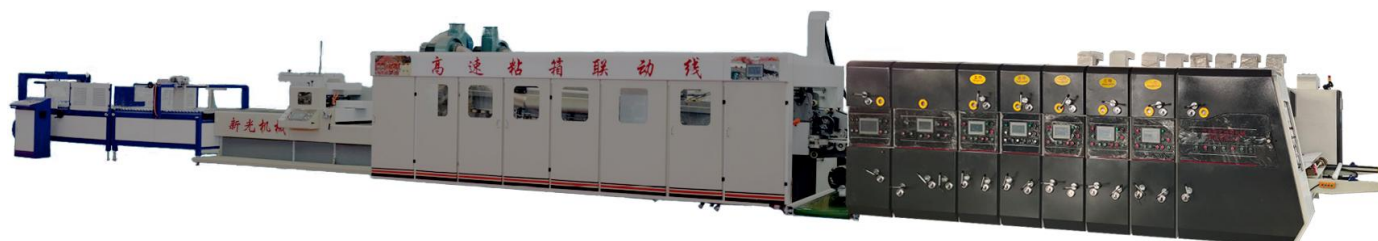
1 The independent drive of the servo motor of the die-cutting section can cut off the alternating load impact on the front printing section during die-cutting, stabilize the printing effect and increase the production speed.

✂ Main purchased parts, raw materials and origin:

Main part name	Origin	Material model
Uniglu	Depair, Germany	Width 250 mm 

XG-0922 maximum die cutting area: 800 mmX 2250 mm

folder gluer inline





创新包装科技
打造一流品牌

The GS-2800 carton automatic gluing machine is designed and manufactured to comply with printing, slotting, folding, gluing and stacking. It has the ability to carry, apply glue, and fold to form several layers automatically. Adopt PLC control, touch screen operation and pre-store and manage orders. Its high-speed production capabilities, fast-changing orders and good stability can meet our carton customers' shorter and shorter delivery cycle requirements.

Features of this machine:

1. This machine adopts the design concept of South Korea's Qinglong Company and uses three sets of cast iron wall panels to fix the folding arm to ensure that the folding arm is stable and does not vibrate.
2. The folding arm uses linear guide rollers and ball screws to move, allowing for quick and precise size adjustment.
3. The folding belt uses independent servo power, and each set of belts is driven by an independent motor, which can extend the service life of the belt and reduce the tension of the belt.



4. This machine uses vacuum adsorption to convey cardboard to ensure the stability and correction function of the cardboard during operation.



创新包装科技
打造一流品牌



5. The two rows of shaping wheels in the folding part cooperate with the bending, and the forming effect is standard.



6. The paper feeding part and the box gluing part can realize differential linkage. The total width of the cardboard can be input, and the box gluing belt will automatically track to achieve a minimum direct distance of 5-10cm between the cardboard and the cardboard to reduce the speed of the belt and increase the speed of the box gluing. Reduce unnecessary belt wear.

Main models and specifications:

Machine speed: 280 pieces/minute



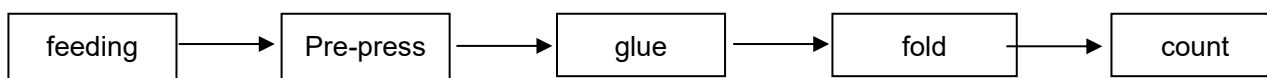
创新包装科技
打造一流品牌

Maximum paper size: 2300x900mm

Minimum paper size: 650x280mm

Applicable paper: 3 layers, 5 layers less than 9mm

1 Work flow chart



2. Introduction to the functions of the carton gluing machine

(1) Glue coating department: **Adopt glue spray system.** The amount of glue can be adjusted as needed, simple and fast.

(2) Whole machine linkage: The folding belts are individually adjusted and controlled, the speed of each belt can be adjusted arbitrarily, and the size of the scissor opening is controlled to a standard. The link printing department can track the automatic acceleration or deceleration of the ink printing machine, and the adjustment is convenient and practical.

(3) The folded cardboard is adjusted by belts and rubber wheels, making it easy to adjust the angle of the folded cardboard.

(4) Cardboard stacking and counting.

Special color recognition sensors control counting, making each package count accurate.

The counter (sensor) counting the number of cartons can be set arbitrarily on the touch screen.

3. Instructions

Technical data according to specifications for flexographic printing grooving

machine speed	280 pieces/minute
Maximum stacking height (mm)	350
Minimum stacking height (mm)	80
The maximum number of pictures in a pile	30



创新包装科技
打造一流品牌

(pieces)	
The minimum number of pictures in a pile (pieces)	15
Maximum paper size (mm)	2300 x 900
Minimum paper size (mm)	650x 280
Corrugated type	A,B,C,E,A+B,B+C,B+E



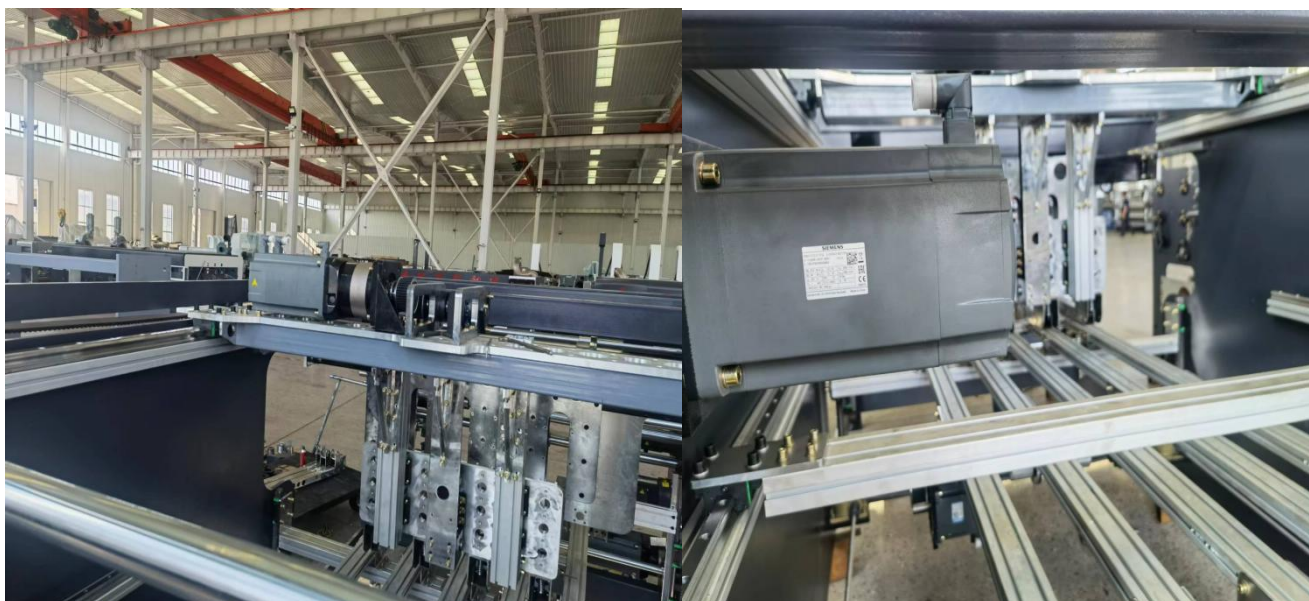
The "up-and-down" collection system effectively protects the printing surface from scratches and has high production adaptability.

High-frequency box correction system, fan-assisted paper dropping, and cyclic transmission.

Multi-servo driven high-speed counting and stacking collection system ensures stability in universities.



创新包装科技
打造一流品牌



The servo splicing section prevents friction damage to high-demand printing plates

Automatic double head PE belt bundle machine line

Economical configuration sheet

The fully automatic double-head baler is a brand-new automatic product developed by our company by introducing Taiwanese technology, reintegrating the design and researching and



创新包装科技
打造一流品牌

developing. Using a number of advanced technologies, we take high automation, high precision, high speed, high reliability and safety as our development direction. So that users can really get energy saving and high efficiency . The whole machine is controlled by PLC, which is reliable in operation, simple, fast and precise in changing orders.

Features:

1. The operation is simple, the maintenance is convenient, the safety is no need for experience, and the power can be turned on.
2. Cost saving. (The cost of using PE tape is 1/4 of the cost of PP tape)
3. This machine can be customized for automatic box gluing machine, automatic glue nailing machine, semi-automatic box nailing machine, and other equipment.

The main structure of the machine:

1. Host transfer consists of two parts

①Stainless steel conveying roller conveys, fully reduces the abrasion of the carton by conveying friction. There are a total of 38 conveying rollers on the left and right parts of the conveying roller shaft , which are driven by a special high-friction belt for transmission.

②The paper pusher is conveyed, and the power roller is equipped with a photoelectric induction system under the feeding port. When the carton touches the first photoelectric induction, the paper pusher will start to push the carton forward.

Push the carton to the knotted part , contact the second photoelectric induction system, the paper pusher stops, and at the same time the upper pressing plate falls down, pressing the carton until it reaches the designated position . After the pressing plate starts to move, it returns to the starting point . In addition, the transfer roller has intermittent and constant rotation, two functions can be selected, and the transfer roller part automatically waits for standby, saving power. When a carton comes over, the induction part automatically senses and starts to run .



创新包装科技
打造一流品牌

2. Shoot all parts:

The shooting part is composed of four directions: up and down, left and right. After the carton passes through the second set of photoelectric induction system, the left and right shooting is started, and the left and right directions are shot. When the carton is pushed to the designated position by the push plate, the front of the carton is blocked by the packing belt and the completed carton in front, and the uniformity of the front and rear cartons is adjusted. After reaching the designated position, the upper platen is pressed down, and the up and down direction is aligned. The cooperation of the above-mentioned parts ensures the neatness of the packed cartons, and can perfectly cope with the top-folding and bottom-folding type gluers and nailers.

3. Knotting part:

The patented double-head knotting technology, the machine heads are all made of Taiwan technology, and the double-head knots are knotted at the same time , which improves the knotting speed and knotting accuracy.

The machine head lubricating system directly injects the oil into the important lubricating parts of the oil pump from the oil pump output pipe, which improves the service life of the machine head. To avoid the operator not lubricating the equipment in time, causing damage to the parts and reducing the service life.

the PE end tape used for knotting has better packing effect and lower cost, and perfectly interprets the double bow buckle made by the machine.

4. Machine control:

Assembly structure has bottom moving rail and safety design.

The whole machine is controlled by a computer touch screen to complete size adjustment , speed adjustment , left and right movement, and other actions to complete the operation .

Quick order change within one minute , controlled by Taiwan Delta controller.

The machine head automatically supplies oil and adopts a high-stability hand-pulled oil pump, which is easy to operate, fast and durable.



创新包装科技
打造一流品牌

5.main appliances

serial	name	brand	country of origin
1	motor	East	Shanghai
2	PLC	Matsushita	Japan
3	Inverter	Delta	Taiwan
4	Photoelectric switch	Beckhoff	China
5	contactor	Siemens	Germany
6	The electromagnetic valve	AirTAC	Taiwan
7	touch screen	MCGS	Beijing
8	button	Schneider	France
9	cylinder	AirTAC	Taiwan

6.Main head accessories

No.	name	material	Origin
1	head body	Ductile Iron	China
2	head master	Ductile Iron	China
3	Cable body	Special steel	Taiwan
4	beak	Special steel	Taiwan
5	briquetting	Special steel	Taiwan
6	Press rigging	Special steel	Taiwan



创新包装科技
打造一流品牌

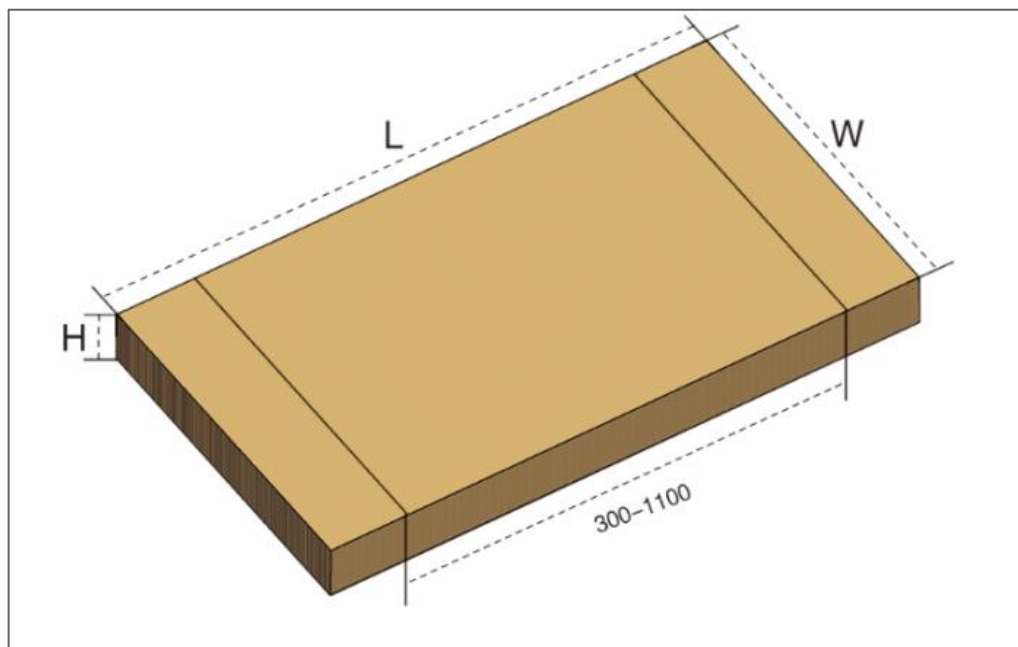
7	Clamping plate	Special steel	Taiwan
8	Bevel gear set	45 # steel	China
9	All spools	45 # steel	China

Note: The main components of this machine are imported from Taiwan.

7.Main Machinery Parts

No .	name	brand	country of origin
1	bearing	Harbin	Harbin
2	triangle belt	PIX	U.K
3	chain	KMC	Taiwan
4	roller	Duffy	Fujian

8.Example of cartons



9. Technical parameters

ModelModel	DY -1300- B
Mainframe Dimensions (MM)	2620 × (2300-3300) × 2000
Paper tray size (optional) (MM)	1200×1000×870
Dimensions of the bin (retractable) (MM)	(500-1500) × 620 × 860
Packing size (MM)	L (400-1500) W (300-1280) H (80-280)
Voltage (V)	380 (220)



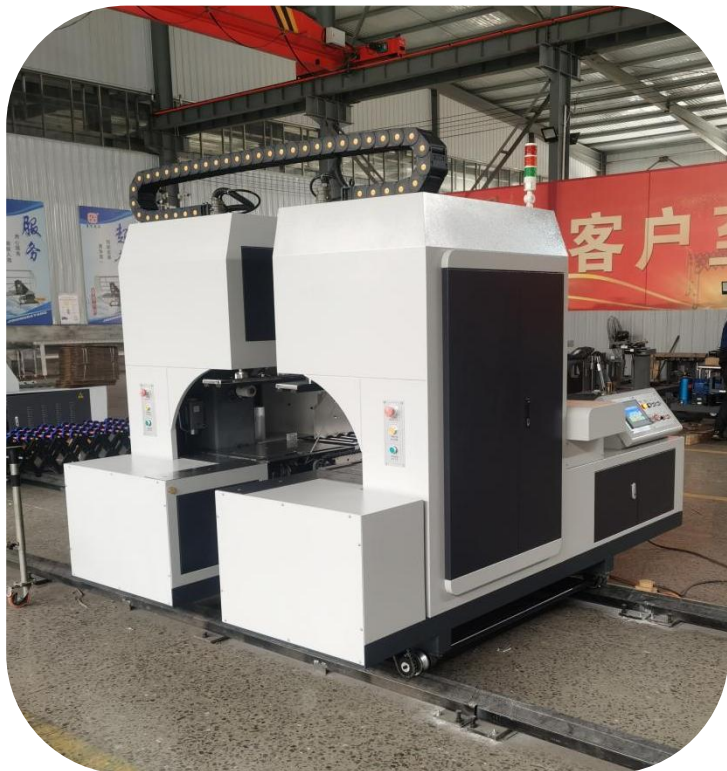
创新包装科技
打造一流品牌

frequency (Hz)	50 (60)
total motor power (KW)	2.75
Host weight (T)	2.1
working pressure(Mpa)	0.6-0.8
PE end tape(#)	35-50
size adjustment	electric
Size fine-tuning	electric
Packing speed (bundle/min)	13-16
Machine head online (Thread)	electric



创新包装科技
打造一流品牌

10. Picture of the whole machine



Behind



Front

Pictures are for reference only and are subject to change without notice! !



创新包装科技
打造一流品牌

Quotation

No.XG20231106MU

Date: Nov, 06th, 2023

SUBJECT OF QUOTATION

NAME	Delievery	QTY	
XG-Y 0922 lead edge feeding four color printing slotting die cutting folder gluing strapping inline	90 days	1 SET	
Total cost	90 days	1 SET	

Packing details: 3*40FR+1*20FR

Payment: 30% by TT as deposit, 70% TT before shipment.

Delivery time: after receive the customer's deposit in 90 days.

Warranty: 12 months limited warranty

Starting from date of delivery, except electrical, wearing parts, during the machine warranty period, the seller is responsible for the transport cost of the part), after 12 months seller provide paid services.

Delivery address: Hebei Xinguang Carton Machinery Manufacture Co.,Ltd

Installation: Equipment installation, commissioning and on-site guidance sent by the seller, free training technical personnel the buyer, buyer arrange workers to help seller and provide the necessary tools to seller. Noted: buyer is responsible for installation and commissioning engineer domestic transportation costs, installation and commissioning engineer air tickets, visa fees, room and board, and foreign personal safety, transportation and other related costs. seller installation and commissioning engineers went to the buyer for device installation and commissioning, personnel training, commissioning work, buyer required to pay (\$100 per person per day including holidays) to the seller.

Arbitration: Any and all disputes arising from or in connection with the performance of the Contract shall be settled through negotiation by both parties, failing which they shall be submitted for arbitration. The arbitration shall take place in China and shall be conducted by China International Economic and Trade Arbitration Commission in accordance with the rules of procedures of the said



创新包装科技
打造一流品牌

commission. The arbitration award shall be final and binding

If the contract can't be executed by the force majeure such as strikes, wars, etc. In such case, the seller immediately and provide the concerning evidence issued by Chinese Embassy or other related Government authority within 15 days of such situation started to be in force.

This contract is any conflict between English and Chinese , Chinese version shall prevail.