

**SUPPLEMENTARY
INSTRUCTION MANUAL**

**THE
ORIGINAL HEIDELBERG
CYLINDER**

SHEET SIZES

**15³/₄ x 22¹/₂"
18 x 22¹/₂"**

ORIGINAL HEIDELBERG

SCHNELLPRESSENFABRIK AG HEIDELBERG

Service throughout the World

PLEASE KEEP THIS MANUAL IN THE PRESS ROOM



HENRY PETERHANSEL
SERVICE REPRESENTATIVE

HEIDELBERG EASTERN, INC.
73-45 Woodhaven Boulevard - Glendale 27, Long Island, N. Y.
TWining 6-5500

PREFACE

These instructions are a supplementary manual to the master manual of the Heidelberg K line machines. In this book we cover operation of the

Original Heidelberg Cylinder 15 $\frac{3}{4}$ " \times 22 $\frac{1}{2}$ " (Model KSB)

and the

Original Heidelberg Cylinder 18" \times 22 $\frac{1}{2}$ " (Model KSBA)

In this manual both machines are just called Original Heidelberg Cylinder. We recommend to every printer that he should first read the master manual.

The hints and suggestions in this supplementary manual have been proved by practical day-to-day experiences. We hope that they will be a valuable source of reference for your daily work.

SCHNELLPRESSENFABRIK AG HEIDELBERG

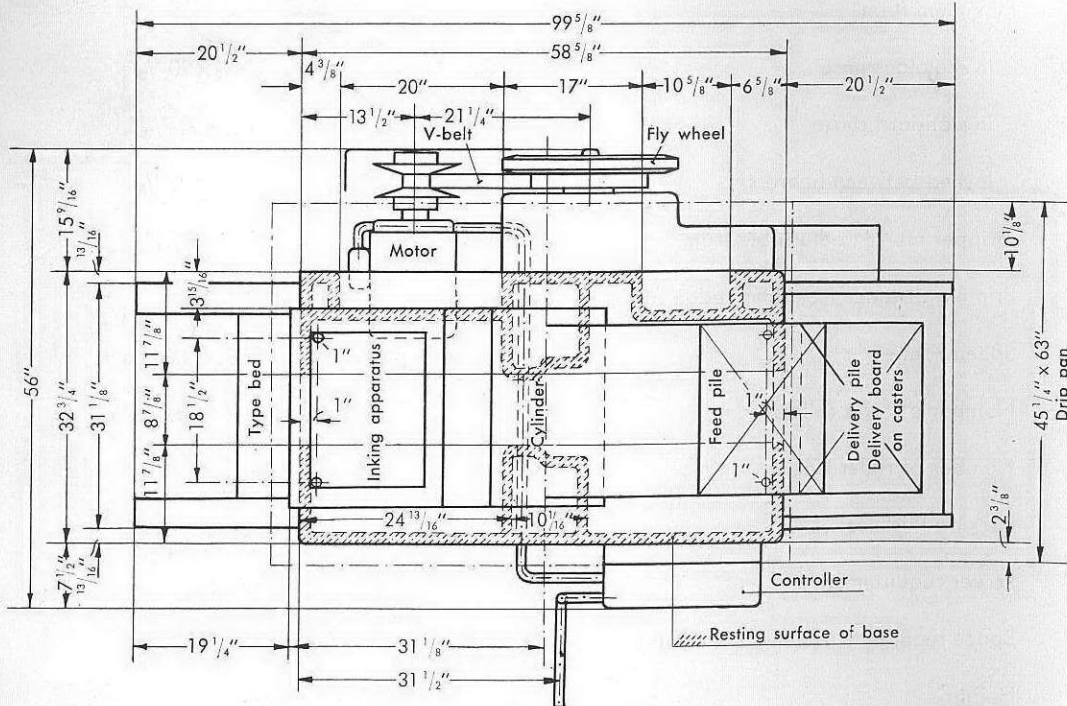
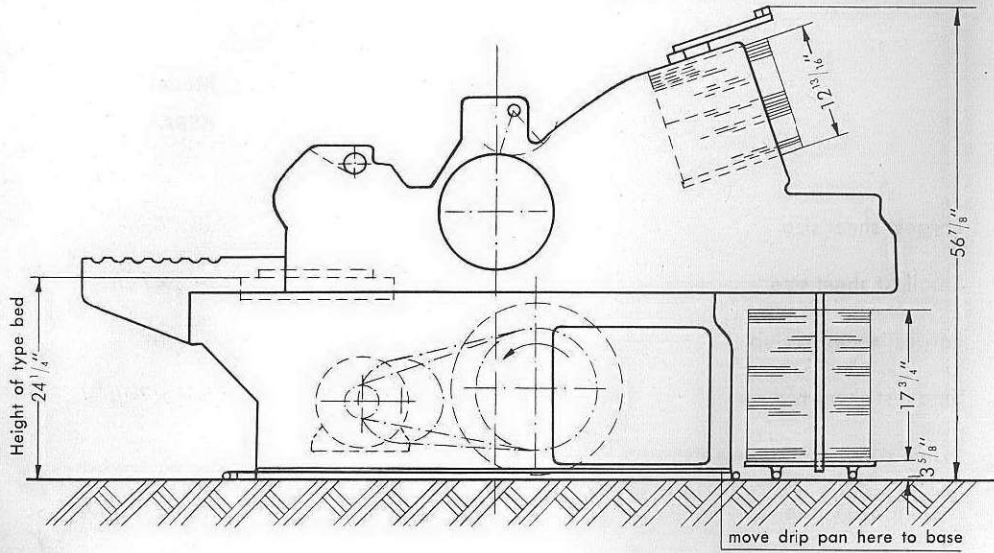
CONTENTS

	Page
Specifications	3
Floor Plan	4
Oil Drip Pan	5
Maintenance	
Running in Machine	6
Lubrication of the Machine	6
Oil Lubrication	7
Grease Lubrication	8
Central Lubrication	13
Gear Box Oil Bath	14
Cleaning the Machine	15
Cleaning the Air Filter and the Paper Dust Screen in the Suction and Air Blast Pump	16
Cleaning of Main Pinion, Gear Racks and Crankshaft Area	17
Operating the Machine	
Form and Roller Guard	20
Inking Unit	21
Inserting and Removing Ductor Roller	24
Inserting and Removing the 2 Distributor Rollers	25
Inserting and Removing Form Rollers	26
Adjusting the Ductor Roller	27
Adjusting the Distributor Rollers	28
Adjusting the Form Rollers	29
Disengaging the Ductor Roller	32
Disengaging the Distributor Rollers	32
Disengaging the Form Rollers	33
Setting of Fountain Blade and Ink Flow	33
Fountain Trip	35
Regulating the Reciprocating Rollers	36
Operating the Roller Washing Device	37
Cleaning the Fountain	41
Cleaning the Splash Guard	41
Device for Adjusting Form	42
Adjusting Form to be Locked between Bearers	45
Locking Chase on the Bed	47
Composition of Cylinder Packing	49
The Heidelberg Press Blanket	50
Clamping the Packing	50
Makeready	53
Cylinder Brush Adjustment	55
Replacing the Brush	55
Cleaning the Brush	56
Support of Sheet in the Delivery with Model KSBA	57
Extra Accessories	
Brushes for Onion Skin and Thin Papers	58
Cardboard Sheet Guide	59
Device for Locking Form between Bearers	60
Imposing Surface for Adjusting Form	60
Device for Carbon Printing	61
Numbering	63
Numbering with Centrally Operated Numbering Machines	63
Special Chases	65
Sheet Guide Band for Heavy Board	65
Die-cutting, Creasing and Scoring	70
Device for Hot Embossing	72
Perforating and Cutting	74

SPECIFICATIONS

	Model KSB	Model KSBA
Largest sheet size	$15\text{-}\frac{3}{4}\times 22\text{-}\frac{1}{2}$ "	$18\times 22\text{-}\frac{1}{2}$ "
Smallest sheet size	$4\text{-}\frac{15}{16}\times 5\text{-}\frac{7}{8}$ "	$5\text{-}\frac{1}{2}\times 7\text{-}\frac{1}{8}$ "
Largest sheet two-up	$11\times 15\text{-}\frac{3}{4}$ "	11×18 "
Smallest sheet two-up	$4\text{-}\frac{15}{16}\times 5\text{-}\frac{7}{8}$ "	$5\text{-}\frac{1}{2}\times 7\text{-}\frac{1}{8}$ "
Inside chase measurements:		
standard chase	$15\text{-}\frac{1}{2}\times 20\text{-}\frac{5}{8}$ "	$17\text{-}\frac{29}{32}\times 20\text{-}\frac{5}{8}$ "
skeleton chase	$15\text{-}\frac{1}{2}\times 21\text{-}\frac{7}{16}$ "	$17\text{-}\frac{29}{32}\times 21\text{-}\frac{7}{16}$ "
Maximum form		
in skeleton chase	$15\times 20\text{-}\frac{5}{8}$ "	$17\text{-}\frac{1}{8}\times 20\text{-}\frac{5}{8}$ "
in standard chase	$15\times 21\text{-}\frac{7}{16}$ "	$17\frac{1}{8}\times 21\text{-}\frac{7}{16}$ "
locked between bearers	$15\times 22\text{-}\frac{1}{8}$ "	$17\text{-}\frac{1}{8}\times 22\text{-}\frac{1}{8}$ "
Gripper margin adjustable from	$\frac{5}{16}$ to $\frac{25}{64}$ "	$\frac{5}{16}$ to $\frac{25}{64}$ "
Printing distance from front edge of sheet	$15\text{-}\frac{3}{8}$ "	$17\text{-}\frac{1}{2}$ "
Speed range	2.500–5.000 i.p.h.	2.500–5.000 i.p.h.
Number of form rollers	4	3 + 1 rider roller
Number of roller tracks	4	4
Packing thickness	approx. .047"	approx. .047"
Power requirements	5.5 HP	6.7 HP
Space requirements (length \times width)	$8'4" \times 4'9"$	$8'4" \times 4'9"$
Height	4'9"	4'9"
Net weight of machine	6.630 lbs.	6.700 lbs.

Floor Plan of Original Heidelberg Cylinder 15^{3/4} x 22^{1/2}" and 18 x 22^{1/2}"
 (Model KSB) (Model KSBA)



Minimum distance on all 4 sides = 25"
 Floor contact surface abt. 13 cu. ft. (1.2 m²)
 Net weight of the machine abt. 6630 lbs (KSB) and abt. 6700 lbs (KSBA)