
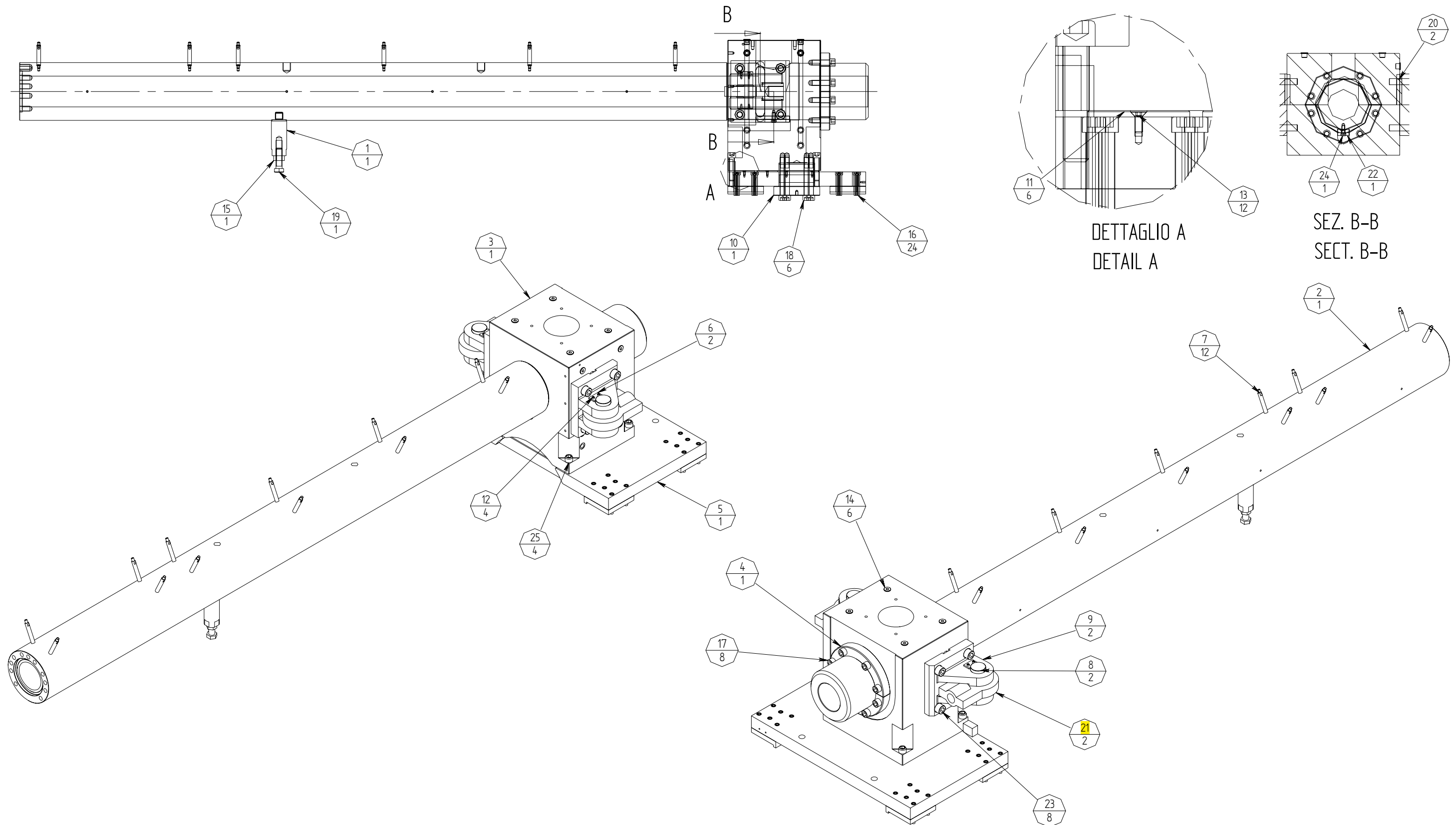


POS	CODICE SIPA	DESCRIZIONE	UM	Q.T A	MARCA
0020	3001655101	CILINDRO DI PLASTIFICAZIONE ESTRUSORE D.120 <i>EXTRUDER CYLINDER PLASTICIZER D.120</i>	NR	1	SIPA
0001	4000293800	DISTANZIALE SPACER	NR	1	SIPA
0002	4005847200	CILINDRO DI PLASTIFICAZIONE D.120 EXTRUDER CYLINDER D.120	NR	1	SIPA
0003	4005901700	CORPO BODY	NR	1	SIPA
0004	4005272500	ANELLO RING	NR	1	SIPA
0005	4005856900	PIASTRA PLATE	NR	1	SIPA
0006	508877900	LAMIERA BLOCCAGGIO PERNO PIN BLOCK SHEET STEEL	NR	2	SIPA
0007	508912400	DISTANZIALE SPACER	NR	16	SIPA
0008	510011600	PERNO x FLANGIA D=60mm PIN FOR FLANGE D=60mm	NR	2	SIPA
0009	510202000	FLANGIA DI ATTACCO ATTACHMENT FLANGE	NR	2	
0010	510202900	PERNO DI ROTAZIONE ROTATION PIN	NR	1	
0011	510215800	PATTINO PIANO PLANE SLIDING BLOCK	NR	6	SIPA
0012	5022118	VITE T.C.E.I. M 6X10 UNI 5931-12.9 SOCKET HEAD CAP SCREW M6X10 UNI 5931-12.9	NR	4	
0013	5003174	VITE T.S.P.E.I. M 6X16 UNI 5933-10.9 HEX. SOCKET COUNTERS. SCREW UNI 5933 M6X16 8.8	NR	12	
0014	5003488	TAPPO TN185GG-1/2"R TRP HEX.PLUG FOR CYL. ELBOW	NR	6	RASTELLI
0015	5005322	DADO E. M 24 UNI 5588-6S HEXAGONAL NUT	NR	1	
0016	5008509	VITE T.C.E.I. M 12X80 UNI 5931-12.9 SOCKET HEAD CAP SCREW	NR	24	UNBRAKO
0017	5011713	VITE TCEI UNI 5931 M20X70 12.9 SOCKET HEAD CAP SCREW	NR	8	AGRATI
0018	5013637	VITE T.C.E.I. M 20X150 UNI 5931-12.9 SOCKET HEAD CAP SCREW M20X150 UNI5931-12.9	NR	6	

POS	CODICE SIPA	DESCRIZIONE	UM	Q.T A	MARCA
0019	5018537	VITE T.E. M 24X80 UNI 5739-8.8 HEXAGONAL HEAD SCREW M24X80 UNI5739-8.8	NR	1	
0020	5032822	LINGUETTA TIPO A 36X20X200 UNI6604-69 FEATHER KEY A 36X20X200 UNI6604-69	NR	2	
0021	5033152	<b>SNODO SFERICO 145261 PARKER</b> <b>SPHERIC PIVOT 145261 PARKER</b>	NR	2	PARKER
0022	5035815	LINGUETTA 45X25X125-A-I UNI 6605 PARALLEL KEY 45X25X125-A-I UNI 6605	NR	1	
0023	5056497	VITE T.C.E.I. M 24X80 UNI 5931-12.9 SOCKET HEAD CAP SCREW	NR	8	SIPA
0024	5073623	VITE T.C.E.I.(testa cilindrica bassa) M 12X30 UNI 9327 12.9 GALV. SOCKET HEAD CAP SCREW	NR	1	UNBRAKO
0025	5117586	VITE TCEI M20X90 UNI5931-12.9 SOCKET HEAD SET SCREW M20X90 UNI5931-12.9	NR	4	AGRATI

ردیف 9 فاکتور

	CILINDRO DI PLASTIFICAZIONE ESTRUSORE D.120	Data/date 24/7/07
	<b>EXTRUDER CYLINDER PLASTICIZER D.120</b>	<b>3001655101</b> Pagina/page 2-2



	CILINDRO DI PLASTIFICAZIONE ESTRUSORE D.120	Data/date 24/7/07
	<b>EXTRUDER CYLINDER PLASTICIZER D.120</b>	<b>3001655101</b> Pagina/page 2-3

POS	CODICE SIPA	DESCRIZIONE	UM	Q.T A	MARCA
0020	3001575901	FLANGIA PRESSA INIEZIONE FLANGE INJECTION PRESS	NR	4	SIPA
0001	4005620300	FLANGIA FLANGE	NR	1	SIPA
0002	5056497	VITE T.C.E.I. M 24X80 UNI 5931-12.9 SOCKET HEAD CAP SCREW	NR	16	SIPA
0003	80001650	PRESA DI PRESSIONE 2103-01-18.00 PRESSURE CONNECTION 2103-01-18.00	NR	1	HIDROTECH- NIK
0004	5039782	FASCIA DI GUIDA 160X165X25 COD.075160165 GUIDE BELT 160X165X25 COD.075160165	NR	3	FRIDLE
0005	5039785	FASCIA DI GUIDA 160X165X15 COD.074BM25148 GUIDE BELT 160X165X15 COD.074BM2514	NR	1	FRIDLE
0006	5039783	GUARNIZIONE O-RING COD.01008900 GASKET O-RING COD.01008900	NR	2	FRIDLE
0007	5039786	ANELLO ANTIESTRUS.COD.987SIP020001 ANIEXTRUSION RING COD.987SIP020001	NR	1	FRIDLE
0008	80024013	GUARNIZIONE RSK301600-T46N GASKET RSK301600-T46N	NR	2	BUSAK & SHAMBAN
0009	80014247	RASCHIATORE EXCLUDER 5 WE5301600-T46N SCRAPER EXCLUDER 5 WE5301600-T46N	NR	1	BUSAK SHAMBAN


ردیف 19 فاکتور

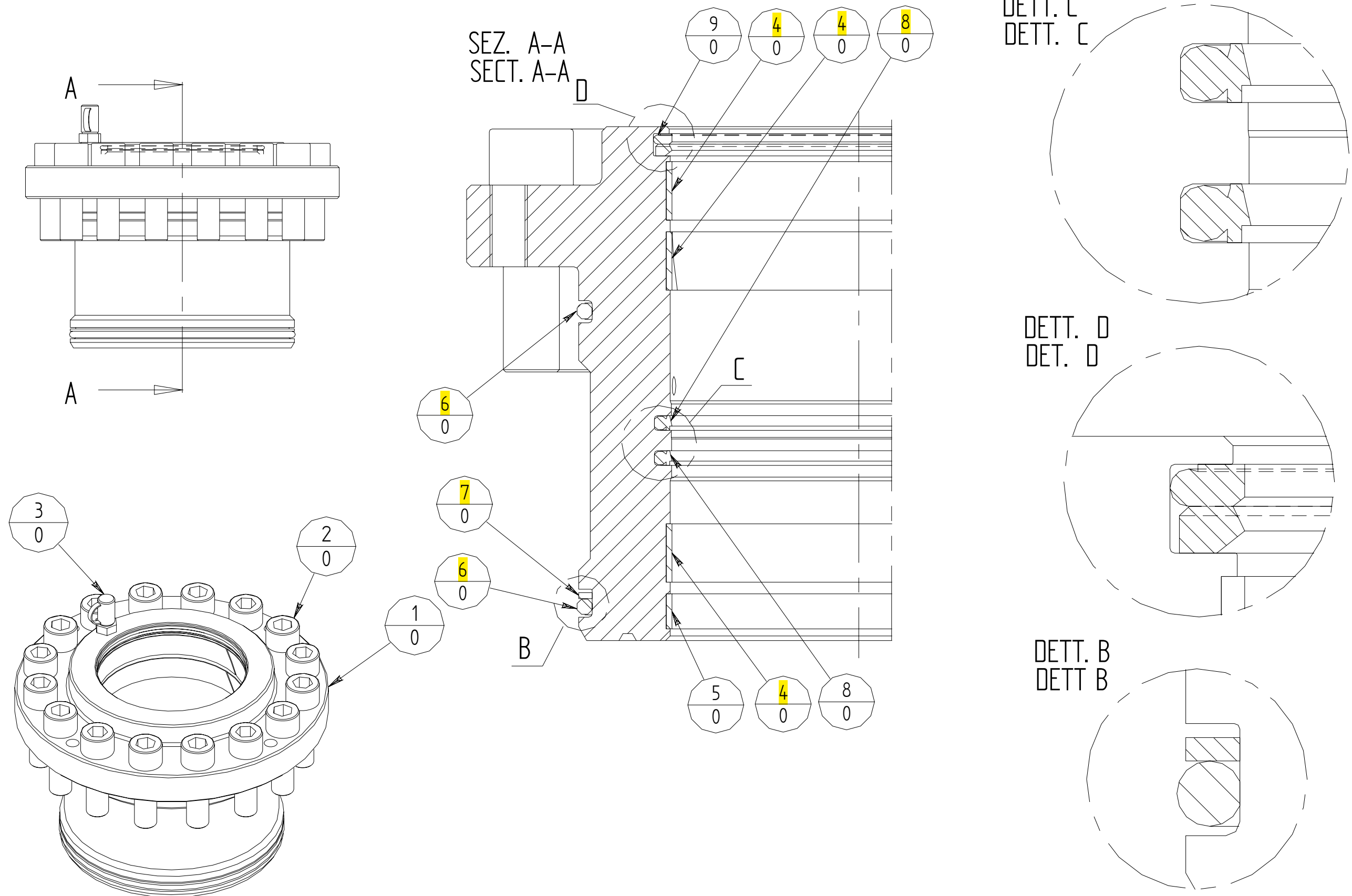
ردیف 20 فاکتور

ردیف 21 فاکتور

ردیف 22 فاکتور

ردیف 23 فاکتور

	FLANGIA PRESSA INIEZIONE	Data/date 24/7/07
	<b>FLANGE INJECTION PRESS</b>	<b>3001575901</b> Pagina/page 4-5




<b>SIPA</b>	FLANGIA PRESSA INIEZIONE	Data/date 24/7/07
	<b>FLANGE INJECTION PRESS</b>	3001575901 Pagina/page 4-6

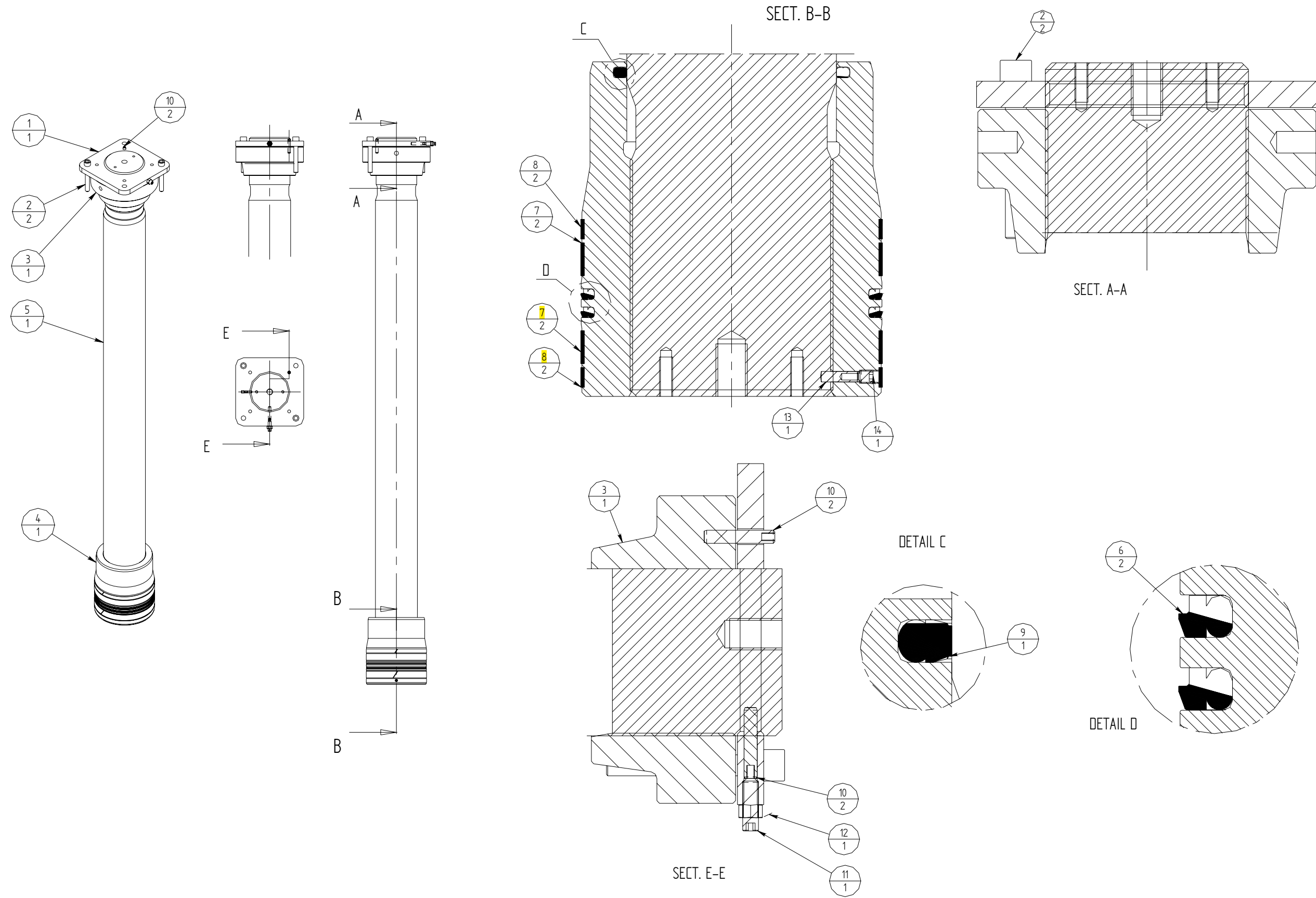
POS	CODICE SIPA	DESCRIZIONE	UM	Q.T A	MARCA
0050	3000253603	COLONNA PRESSA INIEZIONE COLUMN INJECTION PRESS	NR	4	SIPA
0001	510203800	CONTRODADO COLONNA D=160MM COLUMN LOCK NUT D=160MM	NR	1	SIPA
0002	5012703	VITE TCEI UNI5931M16X120 12.9 SCREW	NR	2	SIPA VITERIE
0003	4000289300	DADO NUT	NR	1	SIPA
0004	4000316700	PISTONE PISTON	NR	1	SIPA
0005	4000316201	COLONNA COLUMN	NR	1	SIPA
0006	80024014	GUARNIZIONE PSK402300-T46N GASKET PSK402300-T46N	NR	1	BUSAK & SHAMBAN
0007	5039793	FASCIA DI GUIDA 230X225X25 COD.07522523025 GUIDE BELT 230X225X25 CODE 075225230	NR	2	FRIDLE
0008	5039792	FASCIA DI GUIDA 230X225X15 COD. 074BM25148 GUIDE BELT 230X225X15 CODE 074BM2514	NR	2	FRIDLE
0009	5039791	GUARNIZIONE COD.070NCSP160T GASKET COD.070NCSP160T	NR	1	FRIDLE
0010	5055477	SPINA CILINDR. FORO FILETTATO D 10X55-A UNI8735 THREADED HOLE DOWEL PIN	NR	2	
0011	5006737	GRANO PUNTA PIANA M 12X40 UNI5923-45H FLAT POINT SET SCREW	NR	1	
0012	5002646	DADO E. M12 UNI5588-6S HEXAGONAL NUT	NR	1	5012913
0013	5041572	SPINA CILINDR. FORO FILETTATO D 8X30-B UNI 8735 INTERNAL THREADED DOWEL PIN	NR	1	
0014	5006733	GRANO PUNTA PIANA M 10X10 UNI 5923-45H FLAT POINT SET SCREW	NR	1	
0015	80024021	GUARNIZIONE GLYD RING PT0402300-T46N GASKET GLYD RING PT0402300-T46N	NR	1	BUSAK & SHAMBAN

ردیف 16 فاکتور

ردیف 18 فاکتور

ردیف 17 فاکتور

	COLONNA PRESSA INIEZIONE	Data/date 24/7/07
	<b>COLUMN INJECTION PRESS</b>	<b>3000253603</b> Pagina/page 4-12

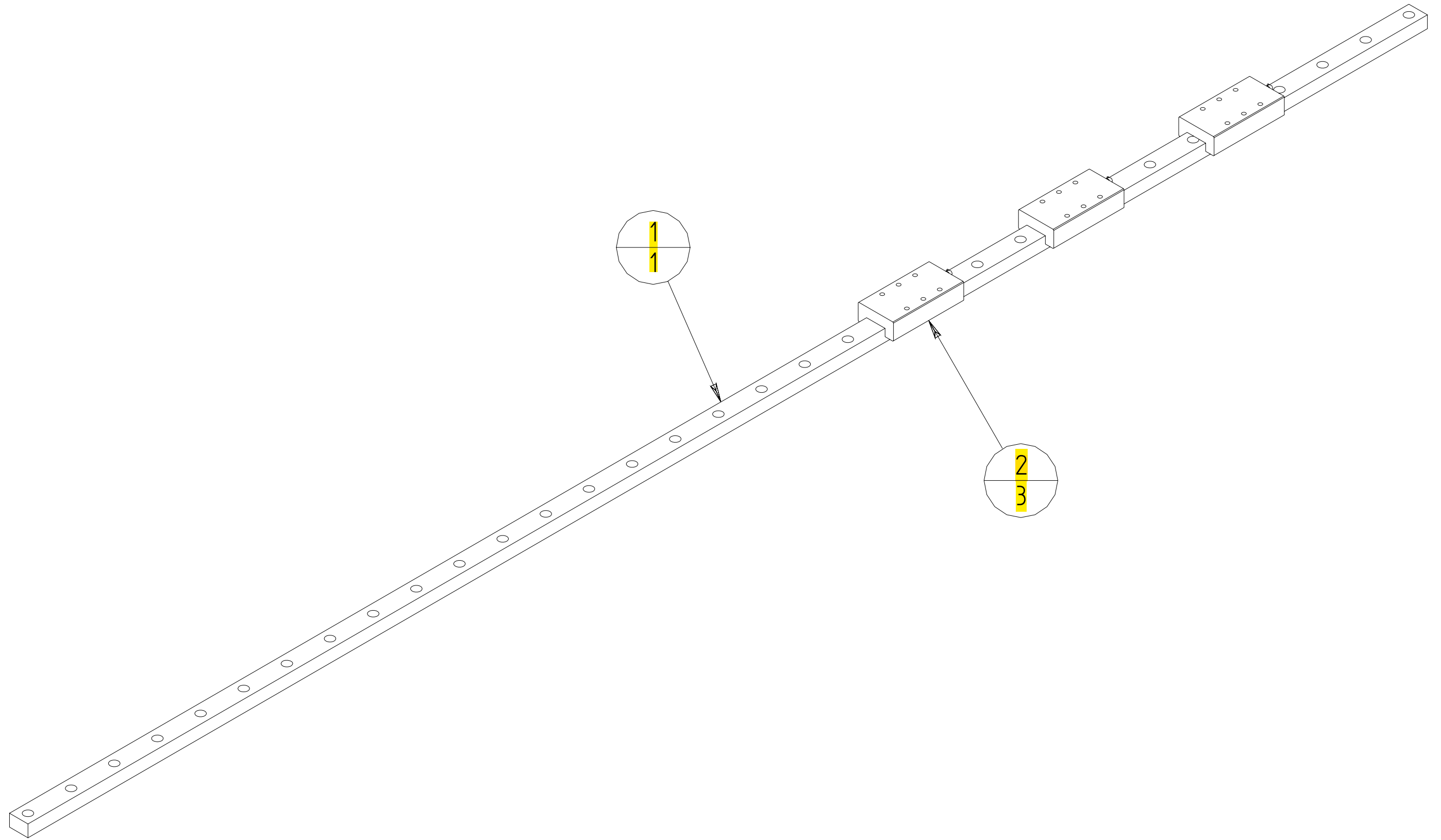



<b>SIPA</b>	COLONNA PRESSA INIEZIONE	Data/date 24/7/07
	<b>COLUMN INJECTION PRESS</b>	<b>3000253603</b> Pagina/page 4-13

POS	CODICE SIPA	DESCRIZIONE	UM	Q.T A	MARCA
0010	3002593200	GUIDA RAFFREDDATORE <i>GUIDE COOLER</i>	NR	2	SIPA
0001	80019007	ROTAIA SNS 45-3405-LT RAIL SNS 45-3405-LT	NR	1	THK
0002	80021144	CARRELLO SNS 45 LR1SSC1 TROLLEY SNS 45 LR1SSC1	NR	3	THK

ردیف سوم فاکتور

	GUIDA RAFFREDDATORE	Data/date 24/7/07
	<b>GUIDE COOLER</b>	<b>3002593200</b> Pagina/page 5-2



	GUIDA RAFFREDDATORE	Data/date 24/7/07
	<b>GUIDE COOLER</b>	<b>3002593200</b> Pagina/page 5-3

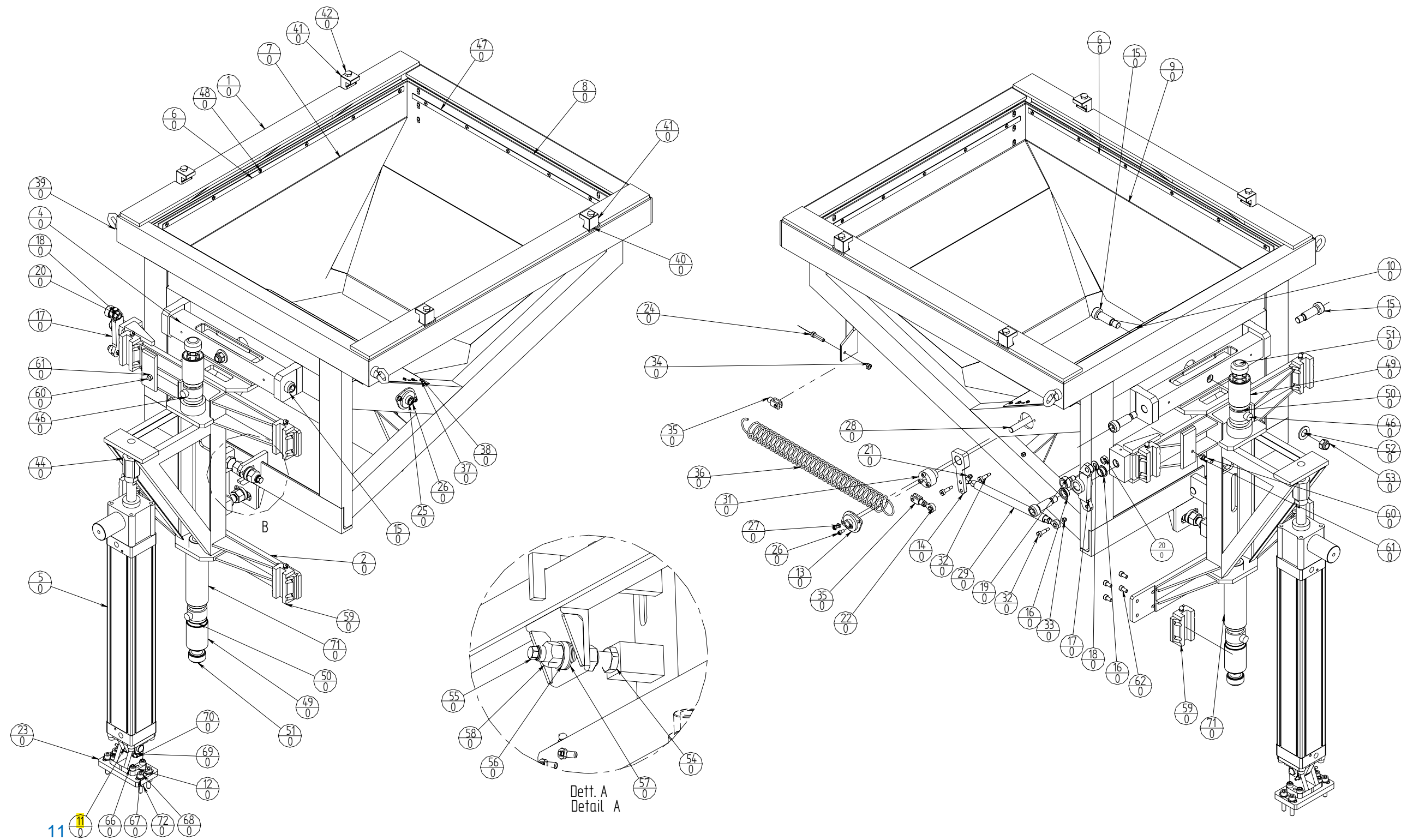


POS	CODICE SIPA	DESCRIZIONE	UM	Q.T A	MARCA
0020	3002909302	TELAIO RAFFREDDATORE FRAME COOLER	NR	1	SIPA
0001	4008400001	TELAIO FRAME	NR	1	SIPA
0002	5010677	VITE T.C.E.I. M 20X60 UNI 5931-8.8 SOCKET HEAD CAP SCREW	NR	8	
0003	5036337	ANTIVIBRANTE PK3-D BILZ GALVANIZZATO VIBRATION PROOF PK3-D BILZ GALVANIZED	NR	4	BILZ
0004	4006999600	PULEGGIA PULLEY	NR	1	SIPA
0005	4006999700	PULEGGIA PULLEY	NR	1	SIPA
0006	80015024	RIDUTTORE XP050S-MF1-7-0M0(FL AC20035014 REDUCTION GEAR XP050S-MF1-7-0M0(FL AC20035014	NR	1	ALPHA
0007	80015025	MOTORE BRL 220/5 CACAA MOTOR BRL 220/5 CACAA	NR	1	CONTROL TECH- NIQUES
0008	80015020	CINGHIA MEGALINEAR AT20 200HP L=7000MM BELT MEGALINEAR AT20 200HP L=7000MM	NR	1	MEGADYNE
0009	4007803800	SUPPORTO SUPPORT	NR	1	SIPA
0010	4006999800	PERNO PIN	NR	1	SIPA
0011	80019537	ROTAIA SHS25-1120L RAIL SHS25-1120L	NR	2	THK
0012	80015016	DECELERATORE OS-30-1800 DECELERATOR OS-30-1800	NR	2	ENIDINE
0013	8000112500	ANELLO ELASTICO D60 UNI 7435 ELASTIC RING D60 UNI 7435	NR	1	
0014	80015014	BARRA 02515 BAR 02515	NR	11	FISCHER
0015	80015013	FIALA 02503 CAPSULE 02503	NR	11	FISCHER
0016	80015018	CALETTATORE TLK 400 70X110 COUPLING TLK 400 70X110	NR	1	TOLLOK
0017	80015010	DADO E. M24x2 UNI5588-6S (ZINC.) NUT E. M24x2 UNI5588-6S (ZINC.)	NR	1	Non applica- bile
0018	4008474800	BARRA BAR	NR	1	SIPA

ردیف چهارم فاکتور

POS	CODICE SIPA	DESCRIZIONE	UM	Q.T A	MARCA
0019	80016681	CUSCINETTO 6312 2RS1 BEARING 6312 2RS1	NR	2	SKF
0020	4007000300	FLANGIA FLANGE	NR	2	SIPA
0021	80015017	ANELLO ELASTICO 150 E UNI 7435-75 ELASTIC RING 150 E UNI 7435-75	NR	2	
0022	80015019	CUSCINETTO 6030-2RS1 BEARING 6030-2RS1	NR	2	SKF
0023	5057281	RONDELLA PIANA UNI 6592 21X37 A4-80 GALVANIZED WASHER	NR	4	
0024	511301000	PROFILO MICRO MICRO PROFILE	NR	2	SIPA
0025	4007254800	STAFFA ROD	NR	1	SIPA
0026	4008476000	BOCCOLA BUSHING	NR	1	SIPA
0027	4007217400	CAMMA CAM	NR	1	SIPA
0028	5002656	RONDELLA PIANA UNI 6592 10,5X18 R40 ZNT GALVANIZED WASHER	NR	15	
0029	5003129	VITE TCEI UNI 5931 M10X35 8.8 SOCKET HEAD CAP SCREW	NR	5	
0030	4007398502	SUPPORTO SUPPORT	NR	1	SIPA
0031	4008072000	LINGUETTA FEATHER KEY	NR	1	SIPA
0032	5003127	VITE T.C.E.I. M 10X25 UNI 5931-8.8 SOCKET HEAD CAP SCREW	NR	8	
0033	80015012	ROSETTA CONC.D24 DIN6319-D 8.8 BRUN. WASHER CONC.D24 DIN6319-D 8.8 BRUN.	NR	2	EUROVITI
0034	5002655	RONDELLA PIANA UNI 6592 8,4X14 R40 ZNT FLAT WASHER UNI 6592 8,4X14 R40 ZNT	NR	19	
0035	5003113	VITE TCEI UNI 5931 M8X20 8.8 SOCKET HEAD CAP SCREW UNI 5931 M8X20 8.8	NR	20	
0036	80015011	ROSETTA CONV.D24 DIN6319-C 8.8 BRUN. WASHER CONV.D24 DIN6319-C 8.8 BRUN.	NR	2	EUROVITI
0037	5003144	VITE TCEI UNI 5931 M12X80 8.8 SOCKET HEAD CAP SCREW	NR	2	
0038	5002660	RONDELLA PIANA UNI 6592 17X30 R40 ZNT GALVANIZED WASHER	NR	3	EUROVITI

	TELAIO RAFFREDDATORE	Data/date 24/7/07
	<b>FRAME COOLER</b>	<b>3002909302</b>
		Pagina/page 5-4



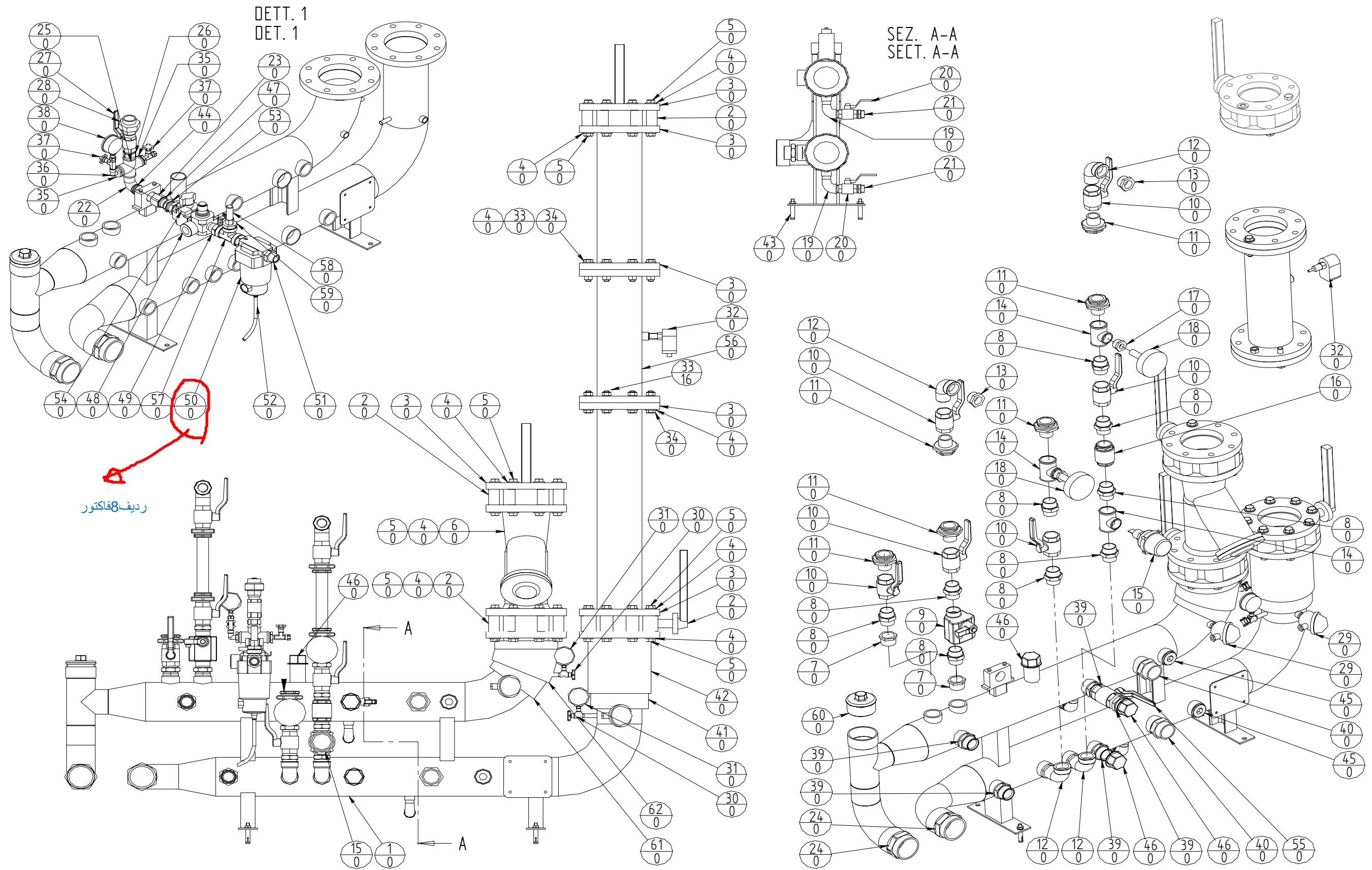
<b>SIPA</b>	SLITTA RAFFREDDATORE	Data/date 24/7/07
	<b>SLIDE COOLER</b>	3002930201 Pagina/page 5-10

POS	CODICE SIPA	DESCRIZIONE	UM	Q.T A	MARCA
0037	5052049	ESCLUSORE PER MANOMETRO 1/4"-1/4" CIL.CON.(FT290 14 G) GAUGE ISOLATOR VALVE 1/4"-1/4" CIL.CON.(FT290 14 G)	NR	2	F.LLI TOGNELLA
0038	5017633	MANOMETRO 0-16 BAR 1/4" D80 RAD. MANOMETER 0-16 BAR 1/4" D80 RAD.	NR	1	PARKER
0039	5018763	NIPPLO PER ALTA PRESS. TROP. CIL.1"1/2-CON.1"1/2 HIGH PRESSURE NIPPLE TROP.	NR	5	SIPA
0040	5015379	NIPPLO PER ALTA PRESS. TROP. CIL.2"-CON.2" HIGH PRESSURE NIPPLE TROP.	NR	2	
0041	5037727	ISOLANTE A CELLULE CHIUSE SP.9 MM. CLOSED CELLS INSULATOR SP.9 MM.	MQ	1	
0042	5037728	LAMIERA ALLUMINIO SP.8/10 ALUMINUM PLATE SP.8/10	MQ	1	
0043	5015456	TASSELLO FISHER TM 10/50 FISHER SMALL BLOCK	NR	4	BALBI VITERIE
0044	5013627	TUBO ZINCATO G 1" GALVANIZED PIPE	MT	0	
0045	5000731	TAPPO TN185GG-1"1/2R TRP HEX.PLUG FOR CYL ELBOW	NR	2	RASTELLI
0046	5039552	TAPPO CON BORDO F.1 1/2"ZNT PLUG WITH EDGE F.1 1/2"ZNT	NR	3	G.F.
0047	5004518	GUARNIZIONE IN RAME 1"G COPPER SEAL	NR	1	
0048	562178300	ASS.VALVOLE IMPIANTO ARIA COD. FESTO KA10671 AIR SYSTEM VALVES ASS.	NR	1	FESTO
0049	5004715	NIPPLO PER ALTA PRESS.TROP CON.1"-CON.1" HIGH PRESSURE NIPPLE TROP.	NR	2	
0050	5043551	<b>FILTRO AMH 550-10D-X20: -CAPACITA' FILTRANTE 0,01 u -ATTACCH FILTER AMH 550-10D-X20</b>	NR	1	SMC
0051	5006919	NIPPLO PER ALTA PRESS. TROP. CIL.1"-CON.1" HIGH PRESS.JOINING NIPPLE TROP	NR	1	SIPA
0052	5001317	TUBO FLESSIBILE CELESTE D 10/8 RILSAN BLUE HOSE	MT	0	
0053	5040730	ADATTATORE DIR. M.F.GIR.TROP. CIL.1" M.F. STRAIGHT ADAPTER CYL1.	NR	1	
0054	8000000300	LUCCHETTO (11030) (COD.ARROWELD 0501004) PADLOCK (11030) (COD.ARROWELD 0501004)	NR	1	Yale
0055	5013530	VALVOLA A SFERA F.F. MANIGLIA A LEVA G 1"1/2 PN16 VALVE SF.F.F.M.L.1"1/2 PN25	NR	1	GS

ردیف 8 فاکتور


POS	CODICE SIPA	DESCRIZIONE	UM	Q.T A	MARCA
0056	4006206200	TUBO SALDATO WELDED PIPE	NR	1	SIPA
0057	5012397	RACCORDO A T F.F.F. A.P. TROP. G 1"-1"-1" HIGH PRESS. F.F.F. TEE FITTING	NR	1	
0058	80023679	VALVOLA SIC. PED D10-T12-3/8" NBR OTT VALVE SIC. PED D10-T12-3/8" NBR OTT	NR	1	NUOVA G.I.
0059	5073010	RACCORDO DI RIDUZ. FIL. TROP. TN141-1"X3/8"R THREADED REDUCT. FITTING TROP	NR	1	RASTELLI
0060	5055592	TAPPO CON BORDO MASCHIO ZNT G 3" GALVANIZED MALE PLUG WITH EDGE 3"	NR	1	
0061	5037727	ISOLANTE A CELLULE CHIUSE SP.9 MM. CLOSED CELLS INSULATOR SP.9 MM.	MQ	1	
0062	5037728	LAMIERA ALLUMINIO SP.8/10 ALUMINUM PLATE SP.8/10	MQ	1	

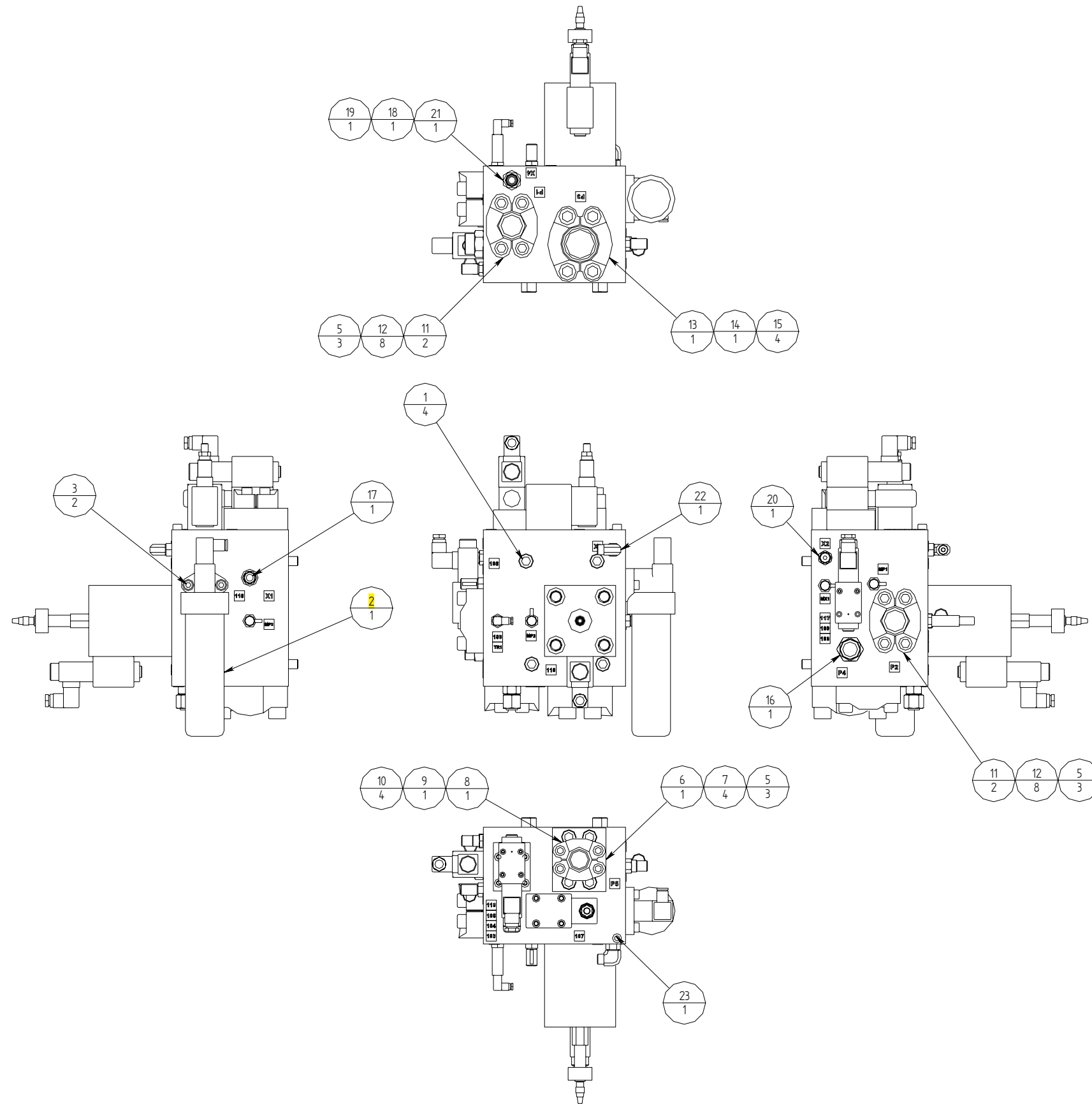
	COLLETTORE IMPIANTO IDRICO	Data/date 24/7/07
	<b>MANIFOLD WATER ON BOARD SYSTEM</b>	<b>3003349500</b>
		Pagina/page 8-3



POS	CODICE SIPA	DESCRIZIONE	UM	Q.T A	MARCA
0090	3001969101	RACCORDERIA IMPIANTO OLEODINAMICO CENTRALINA (BL.100) FITTINGS HYDRAULIC ON BOARD SYSTEM HYDRAULIC UNIT (BL.100)	NR	1	SIPA
0001	5008565	VITE T.C.E.I. M 16X200 UNI 5931-12.9 SOCKET HEAD CAP SCREW	NR	4	UNBRAKO
0002	5039662	FILTRO 14PA-2-3BH-E50S11 رديف 7 فاكتر-فيلتر FILTER 14PA-2-3BH-E50S11	NR	1	PARKER
0003	5011548	VITE TCEI UNI 5931 M10X30 12.9 SOCKET HEAD CAP SCREW	NR	2	SIPA
0004	5039663	CARTUCCIA G01435Q CARTRIDGE G01435	NR	2	PARKER
0005	5012201	ORING OR4187-NB70 ORING OR4187-NB70	NR	3	ANGST PFISTER
0006	4006645401	FLANGIA PER TUBI FLANGE FOR PIPES	NR	1	SIPA
0007	5008064	VITE T.C.E.I. M 16X45 UNI 5931-12.9 SOCKET HEAD CAP SCREW	NR	4	
0008	5011429	COPPIA SEMIFLANGIA SAE 6000 1"1/4 HALF-FLANGE COUPLE	NR	1	
0009	5011430	GUARNIZIONE OR4150-NB70 GASKET	NR	1	ANGST PFISTER
0010	5011464	VITE T.C.E.I. M 14X50 UNI 5931-12.9 SOCKET HEAD CAP SCREW	NR	4	
0011	5011478	SEMIFLANGIA COPPIA SAE6000 1"1/2 SEMIFLANGE COPPIA SAE6000 1"1/2	NR	2	
0012	5018109	VITE T.C.E.I. M 16X55 UNI 5931-12.9 SOCKET HEAD CAP SCREW	NR	8	
0013	5016742	COPPIA SEMIFLANGIA SAE6000 2" SEMIFLANGE COUPLE SAE6000 2"	NR	1	
0014	5010777	ORING OR4225-NB70 ORING OR4225-NB70	NR	1	ANGST PFISTER
0015	5011713	VITE TCEI UNI 5931 M20X70 12.9 SOCKET HEAD CAP SCREW	NR	4	AGRATI
0016	5032051	RACC.D'ESTR.DIRITTO 16F42EDMLOS STRAIGHT FITTING 16F42EDMLOS PARKER	NR	1	PARKER
0017	5035073	RACC.DIR.8-8F42EDMLOS STRAIGHT FITTING 8-8F42EDMLOS PARKER	NR	1	
0018	5032037	BUSSOLA O-LOK TPLS16 BUSHING O-LOK TPLS16	NR	1	PARKER

POS	CODICE SIPA	DESCRIZIONE	UM	Q.T A	MARCA
0019	5032038	DADO O-LOK 10BMLS NUT O-LOK 10BMLS	NR	1	PARKER
0020	5030457	RACC.D'ESTR.DIRITTO 6-6F42EDMLOS STRAIGHT FITTING 6-6F42EDMLOS	NR	1	PARKER
0021	5032026	RACC.D'ESTR.DIRITTO 10F42EDMLOS STRAIGHT FITTING 10F42EDMLOS PARKER	NR	1	PARKER
0022	5032158	RACC.D'ESTR.90° 6-6 C40MLOS FITTING 90° 6-6 C40MLOS PARKER	NR	1	PARKER
0023	5056735	VITE T.C.E.I. M10X20 UNI 5931-12.9 SOCKET HEAD CAP SCREW	NR	1	UNBRAKO

	RACCORDERIA IMPIANTO OLEODINAMICO CENTRALINA (BL.100)	Data/date 24/7/07
	<b>FITTINGS HYDRAULIC ON BOARD SYSTEM HYDRAU-</b>	<b>3001969101</b> Pagina/page 10-19



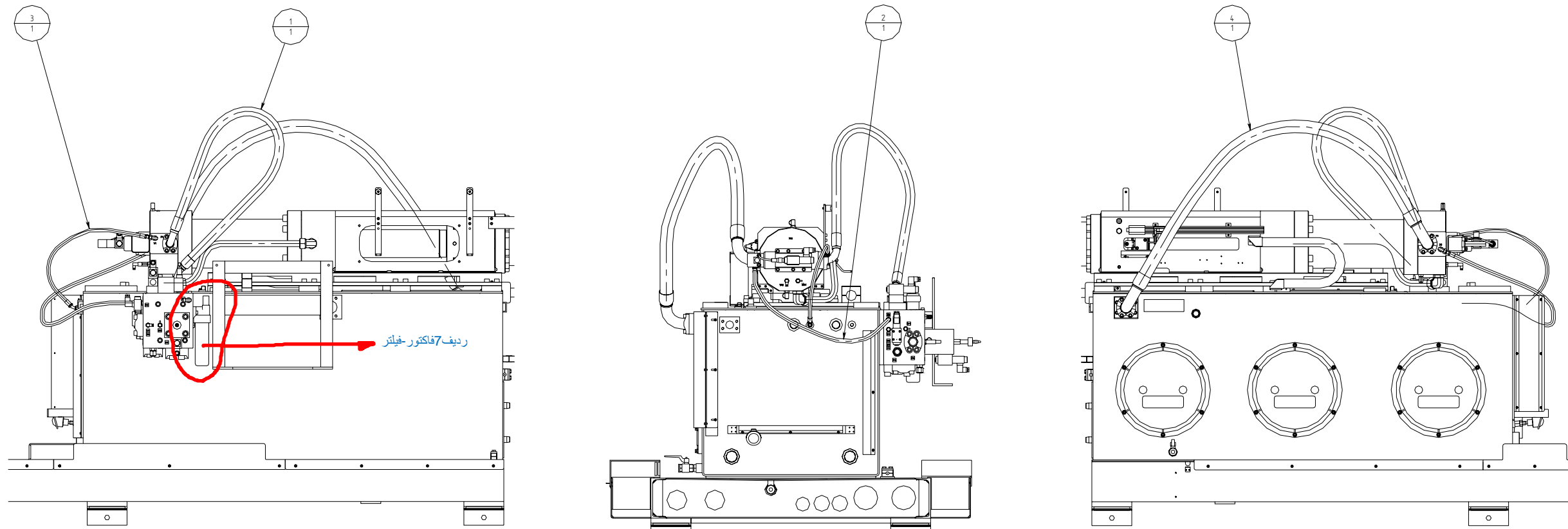
RACCORDERIA IMPIANTO OLEODINAMICO CENTRALINA (BL.100)

Data/date 24/7/07

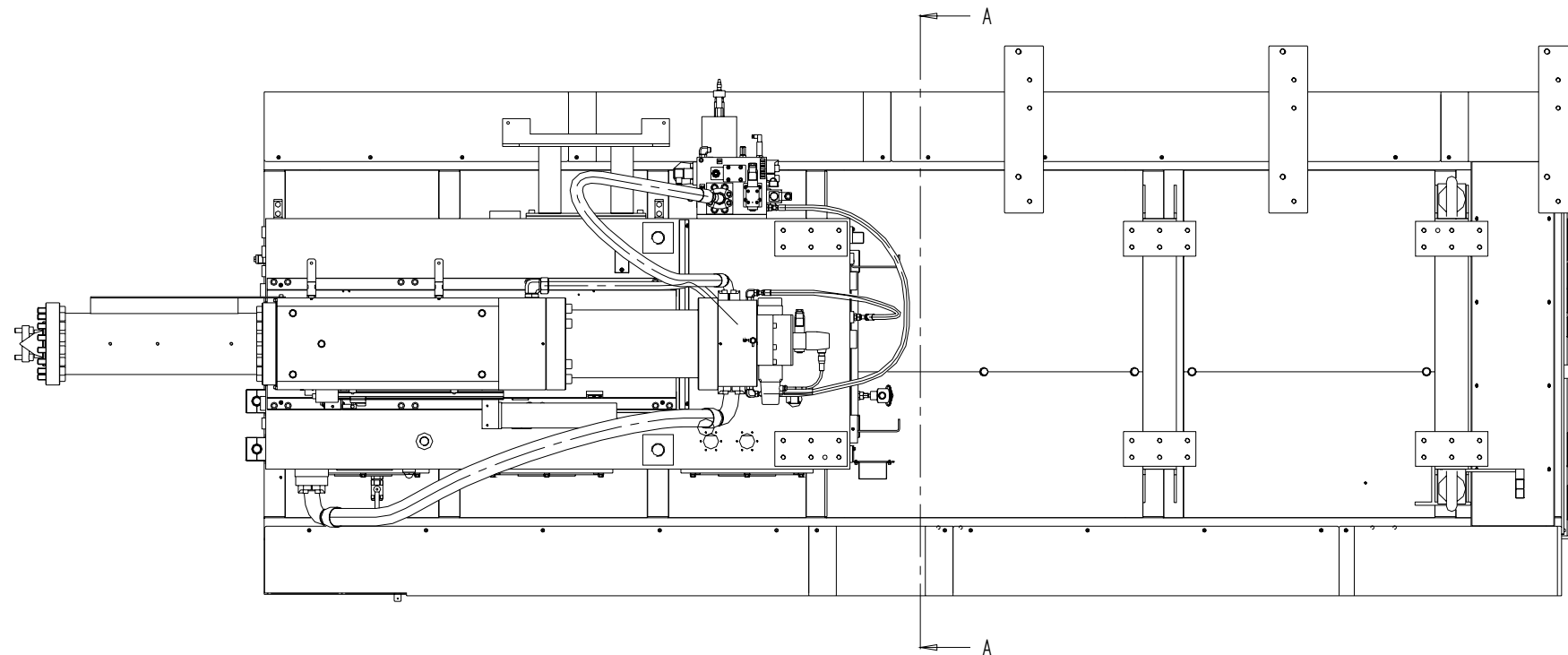
**FITTINGS HYDRAULIC ON BOARD SYSTEM HYDRAU-**

**3001969101**

Pagina/page 10-20



SEZIONE A-A  
SECTION A-A



<b>SIPA</b>	TUBI FLESSIBILI IMP. OLEOD. INIETTORE (INIETTORE)	Data/date 24/7/07
	<b>FLEXIBLE TUBES HYDRAULIC ON BOARD SYSTEM IN-</b>	<b>3001927101</b> Pagina/page 10-62

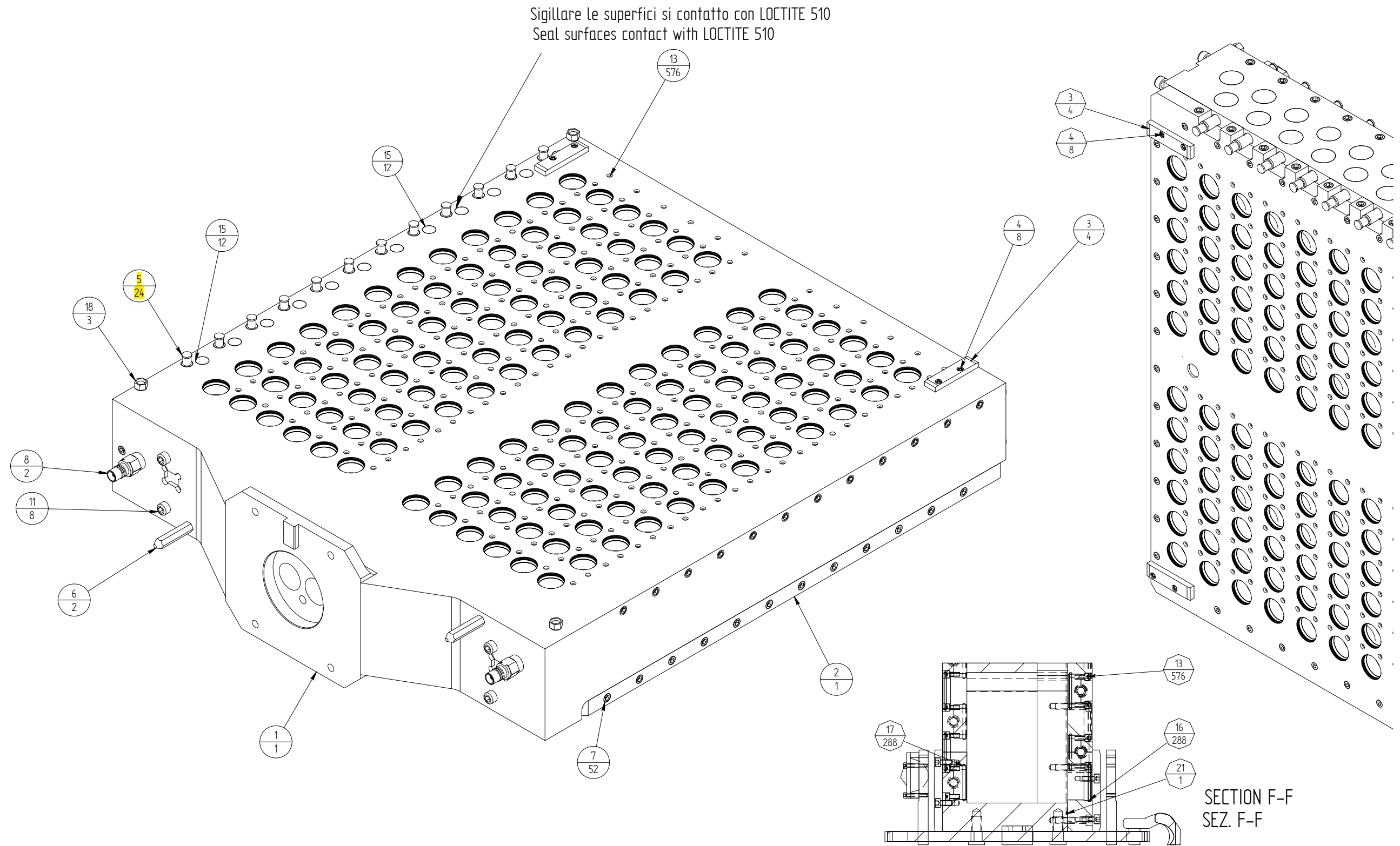
POS	CODICE SIPA	DESCRIZIONE	UM	Q.T A	MARCA
0010	3002256303	COLLETTORE PERSONALIZZAZIONE PPS96 CAV.72 MANIFOLD PERSONALIZATION PPS96 CAV.72	NR	3	SIPA
0001	4008595800	COLLETTORE 72 CAVITA' MANIFOLD 72 CAVITA'	NR	1	SIPA
0002	4008596600	PIASTRA 72 CAVITA' PLATE 72 CAVITA'	NR	1	SIPA
0003	4008469200	PATTINO PIANO LINER	NR	4	SIPA
0004	5074308	VITE TCEI UNI 5931 M5X12 A4-80 VITE TCEI UNI 5931 M5X12 A4-80	NR	8	
0005	5039946	MINI COAX PI 12-3 COD.0106923 MINI COAX PI 12-3 CODE 106923	NR	48	PIAB
0006	510210500	PUNTALE STAKE	NR	2	SIPA
0007	5002200	TAPPO CONICO ESAGONO INCASSATO TRP TN192-1/ 4"R FITTING FOR HEX.COUNT.PLUG TRP	NR	56	RASTELLI
0008	5016106	RACCORDO MASCHIO RMI 12.7152/JV G 3/8" MALE FITTING RMI 12.7152/JV G 3/8"	NR	2	STAUBLI
0009	4030091801	ATTACCO MANTING	NR	4	SIPA
0010	5035877	GRILLO ZINCATO BRI PIN GP4 1-1 T GALVANIZED SHACKLE BRI PIN GP4 1-1 T	NR	4	CIFEST CER- TEX
0011	5003126	VITE T.C.E.I. M 10X20 UNI 5931-8.8 SOCKET HEAD CAP SCREW	NR	8	
0012	5057132	VITE T.C.E.I. INOX M 6X25 UNI 5931-A4-80 SOCKET HEAD CAP SCREW	NR	48	
0013	5057111	VITE T.C.E.I. INOX M 4X10 UNI 5931-A4-80 SOCKET HEAD CAP SCREW	NR	576	
0014	4007338600	TAPPO CAP	NR	48	SIPA
0015	4007339000	TAPPO CAP	NR	24	SIPA
0016	5008599	GUARNIZIONE OR 2137-NB70 GASKET	NR	288	ANGST PFISTER
0017	5012272	GUARNIZIONE OR 2131-NB70 O-RING	NR	288	ANGST PFISTER
0018	4005811101	DIMA TEMPLATE	NR	3	SIPA

ردیف دوم فاکتور

POS	CODICE SIPA	DESCRIZIONE	UM	Q.T A	MARCA
0019	5014419	GUARNIZIONE OR 2050-FP75 GASKET OR 2050-FP75	NR	24	ANGST PFISTER
0020	4030091900	DISTANZIATORE DUTCHMAN	NR	4	SIPA
0021	5039690	CORDINO OR-D=2mm NBR70 CONNECTIONS OR-D=2mm NBR70	MT	2	
0022	5030489	SFERE PORTANTI SENZA CARTER 0534-122-10 BALL HOLDERS 0534-122-10	NR	4	STAR
0023	5039468	VITE TCEI UNI 5931 M3X20 8.8 ZNT GALVANIZED SOCKET HEAD CAP SCREW UNI 5931 M3X20 8.8	NR	12	

	COLLETTORE PERSONALIZZAZIONE PPS96 CAV.72	Data/date 24/7/07
	<b>MANIFOLD PERSONALIZATION PPS96 CAV.72</b>	<b>3002256303</b> Pagina/page 12-2

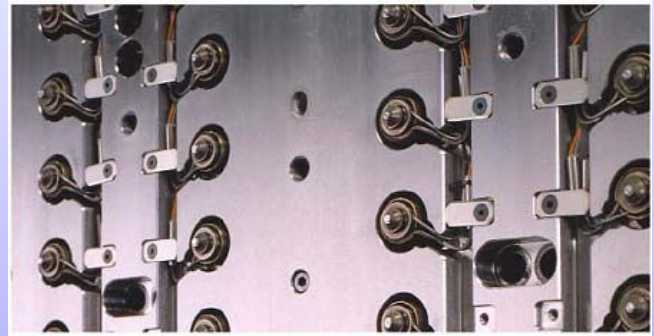
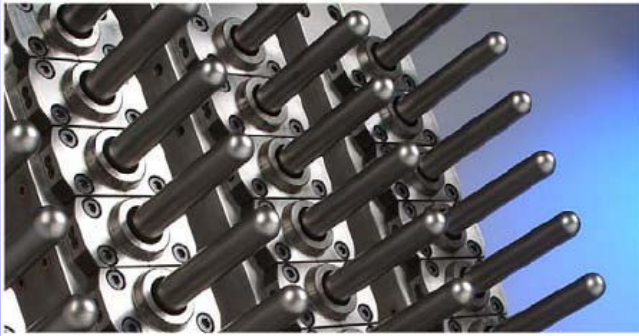




<b>SIPA</b>	COLLETORE PERSONALIZZAZIONE PPS96 CAV.72	Data/date 24/7/07
	<b>MANIFOLD PERSONALIZATION PPS96 CAV.72</b>	<b>3002256303</b> Pagina/page 12-5

***Manuale Ricambi – Spare Parts Manual:***

# ***PPS 72/72***



*Cliente - Customer:*

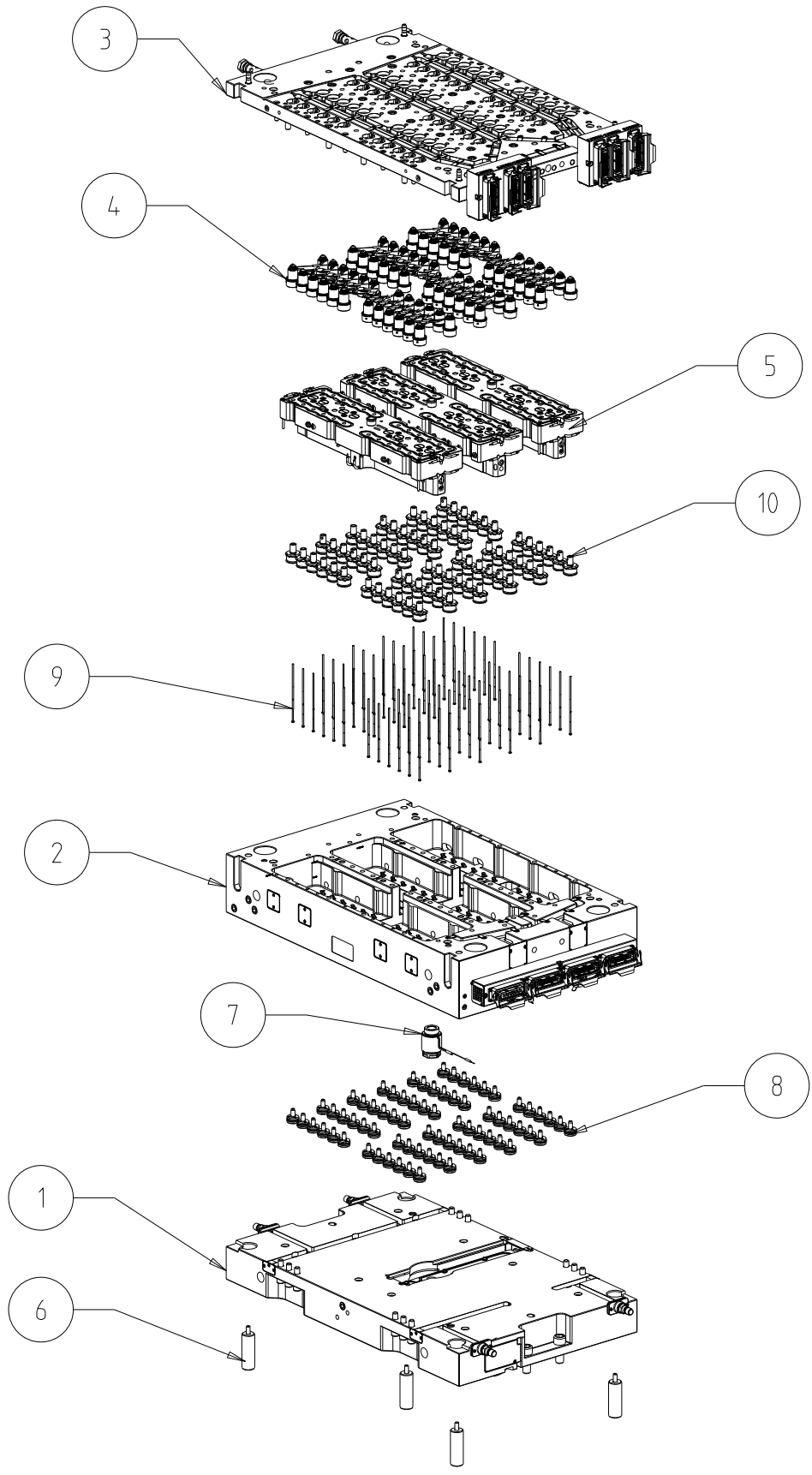
***RANGIN SABOO***

*Comm. Macchina - Machine Work Order : 7610*

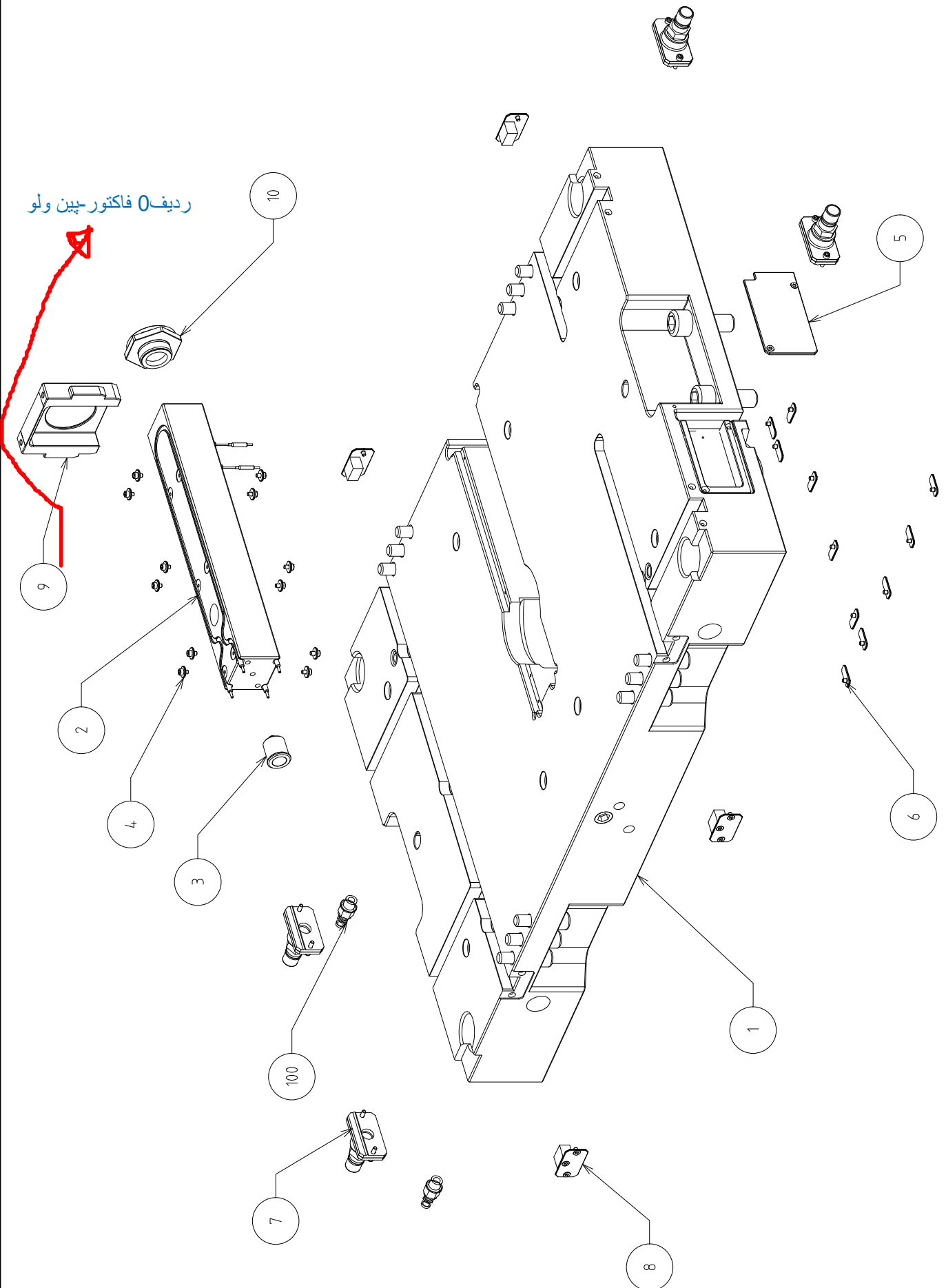
*Commessa Stampo - Work Order : 31973*

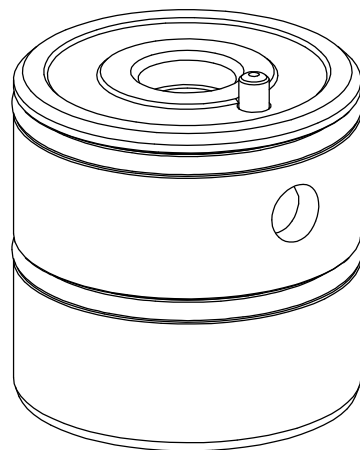
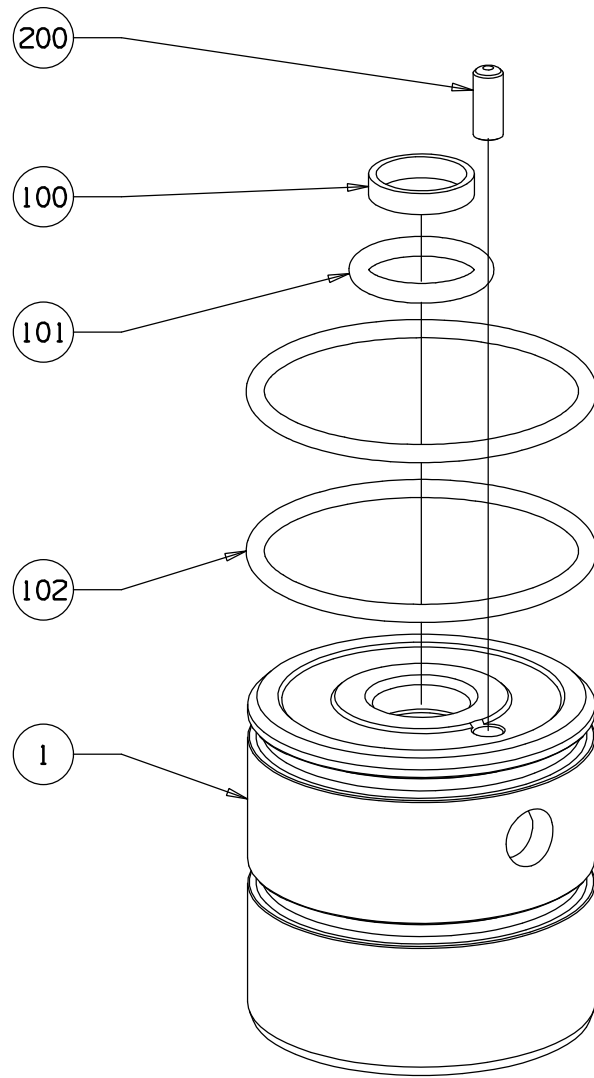
*N° rif. Stampo - Ref. Mould N° : 10007208\_01*

*N° rif. Preforma - Ref Preform N° : PS000639\_01 (45 gr)*







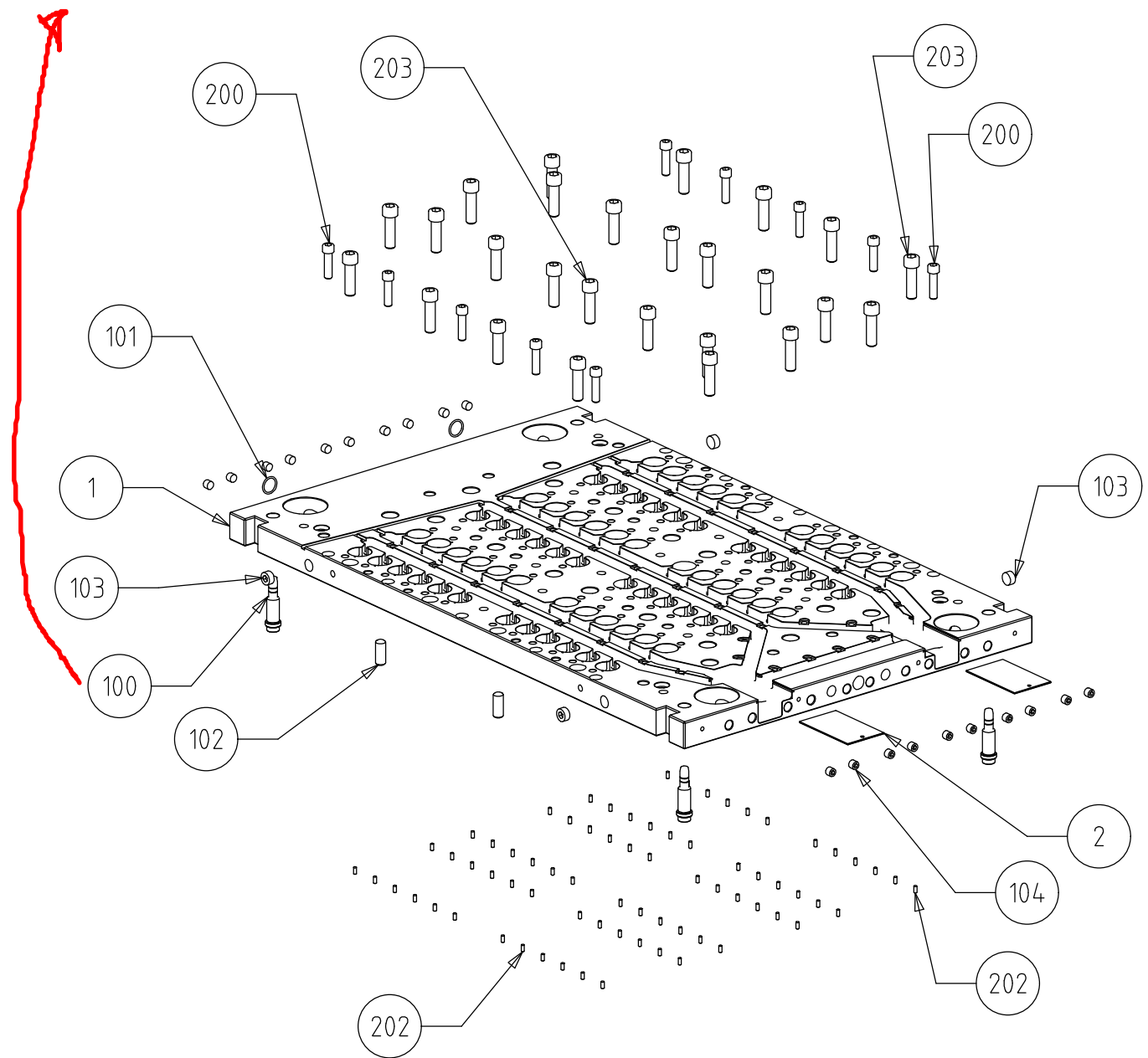




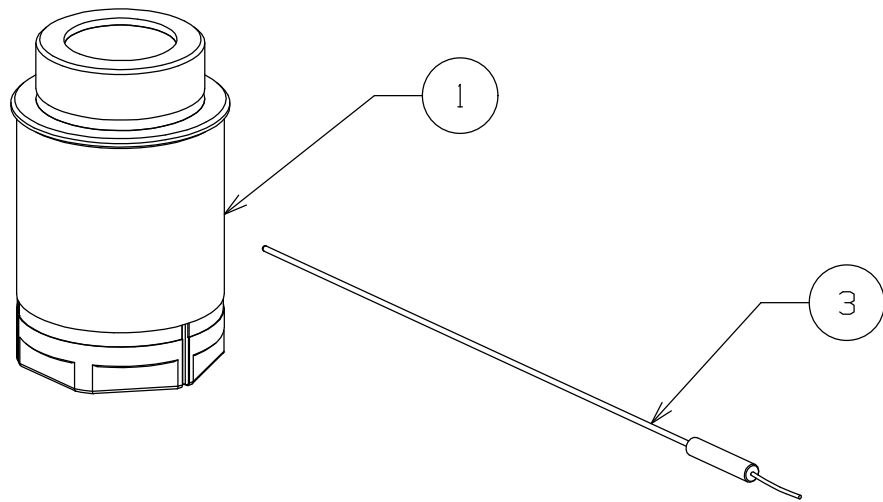
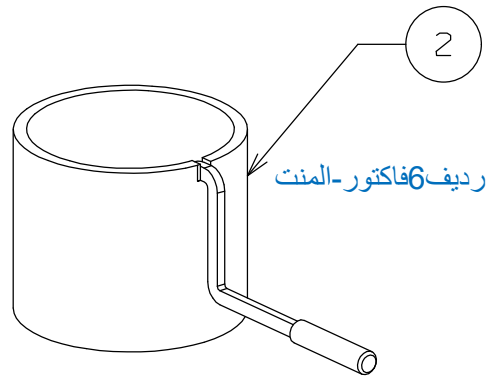




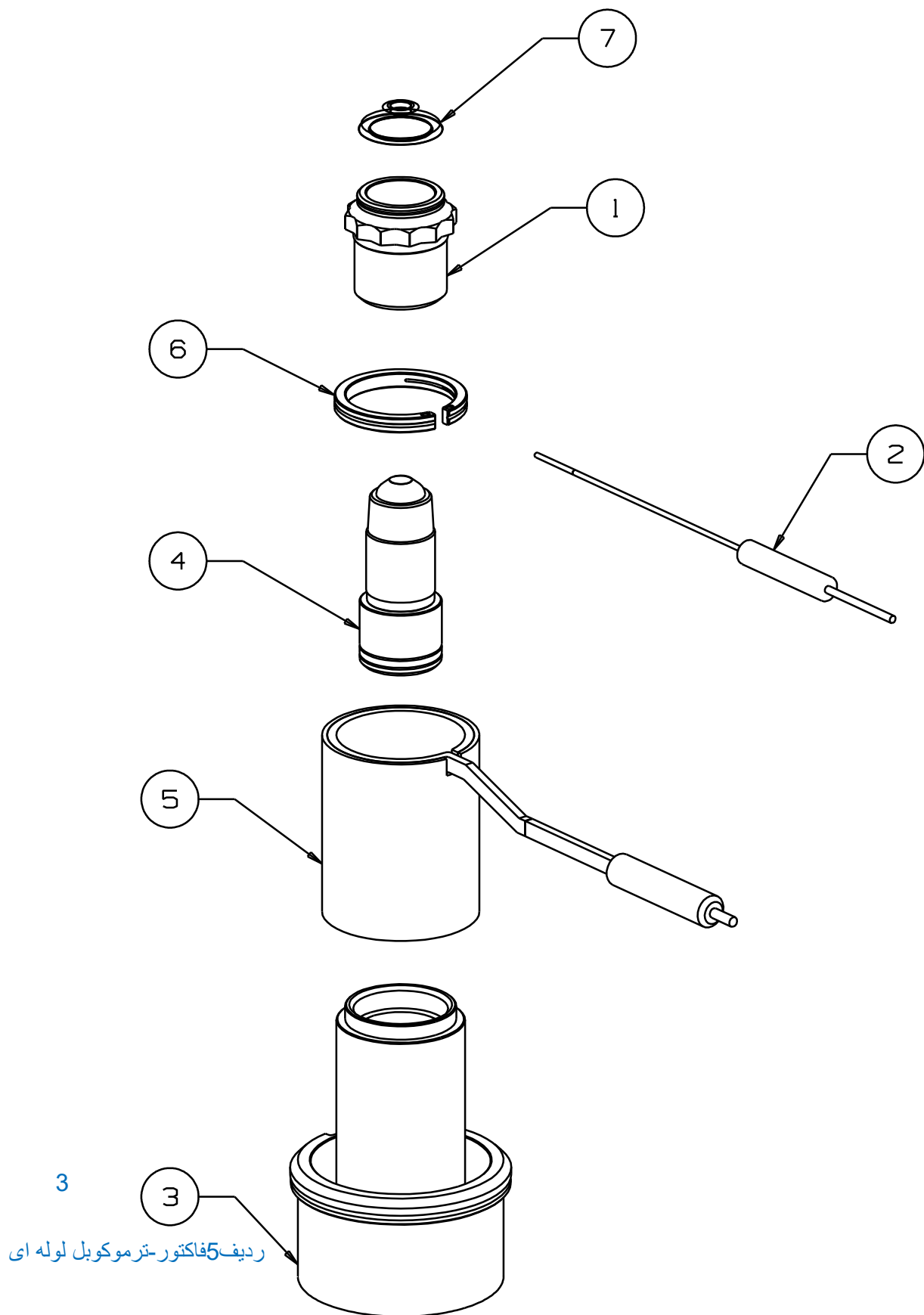
ردیف 26 فاکتور گسکت



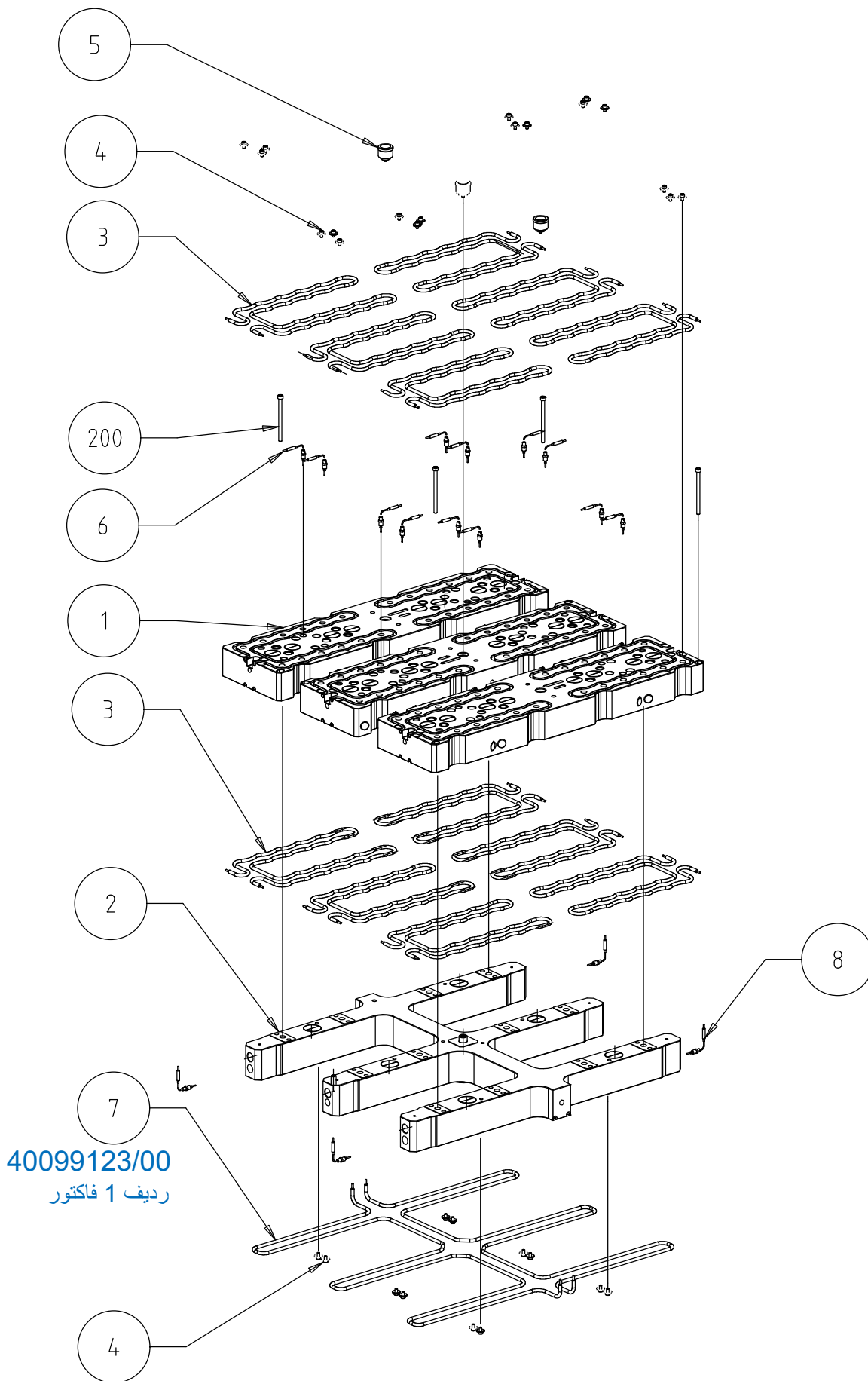




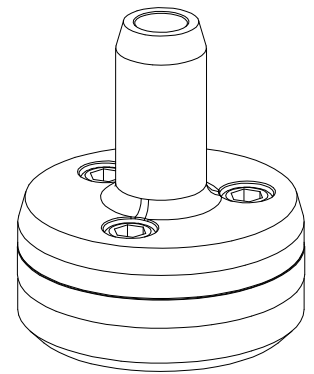
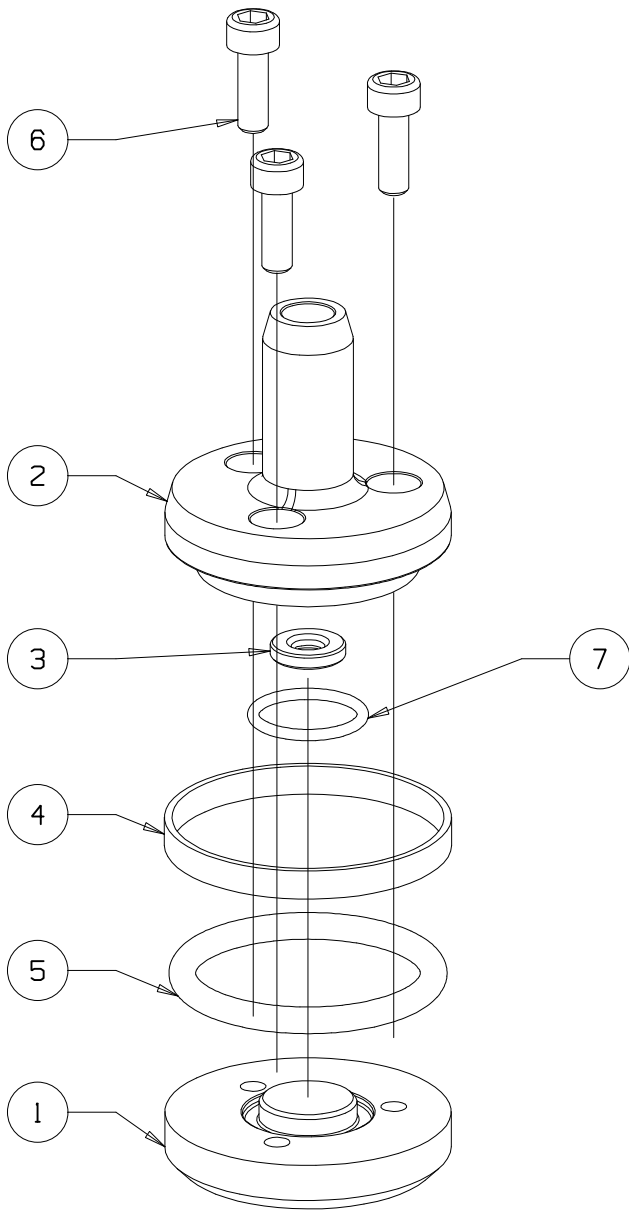








40099123/00  
ردیف 1 فاکتور



ردیف 27 فاکتور



