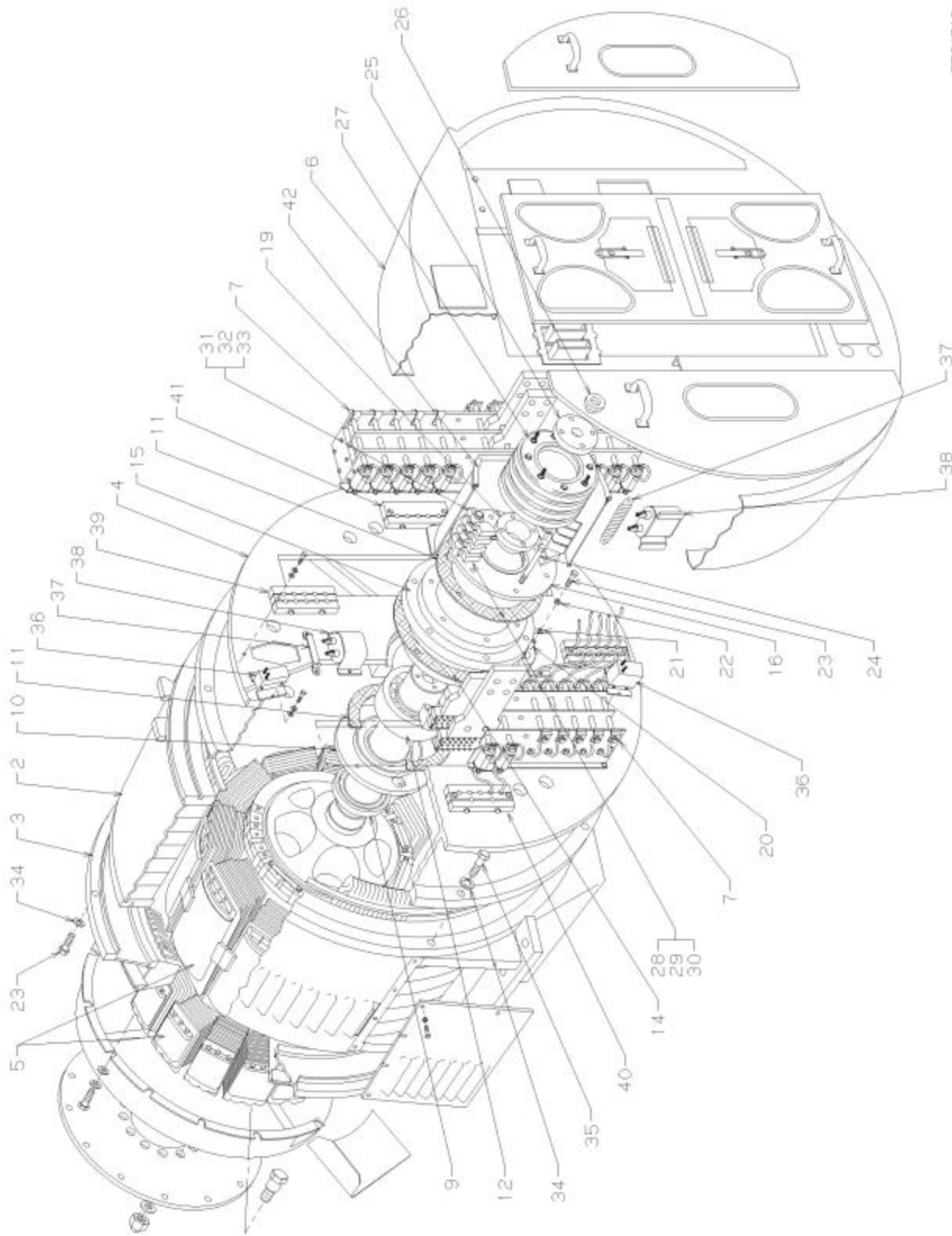


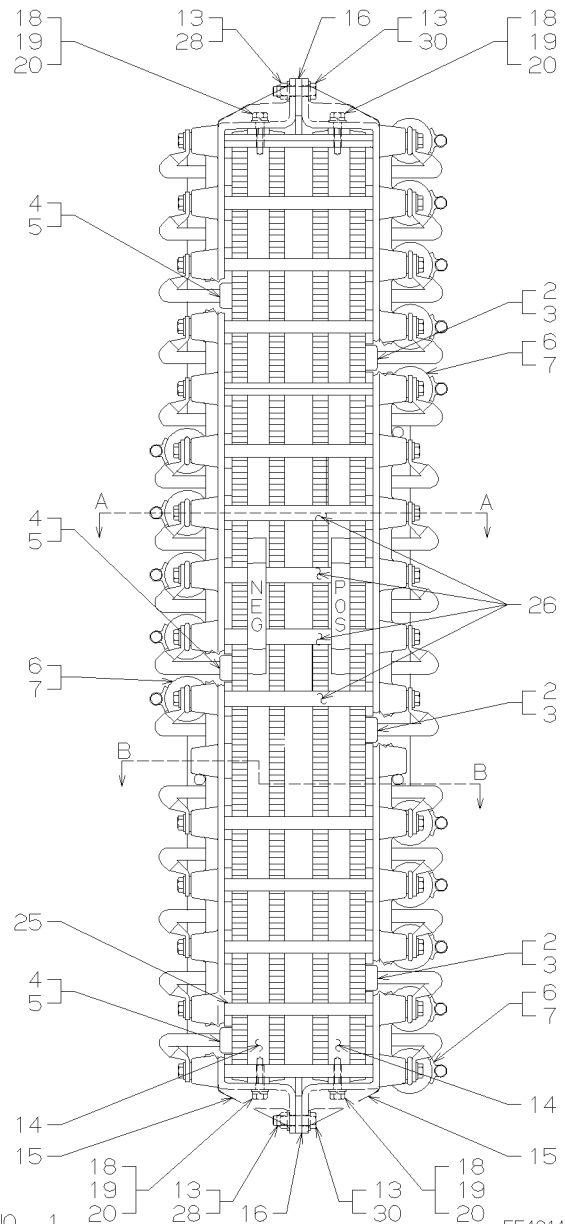
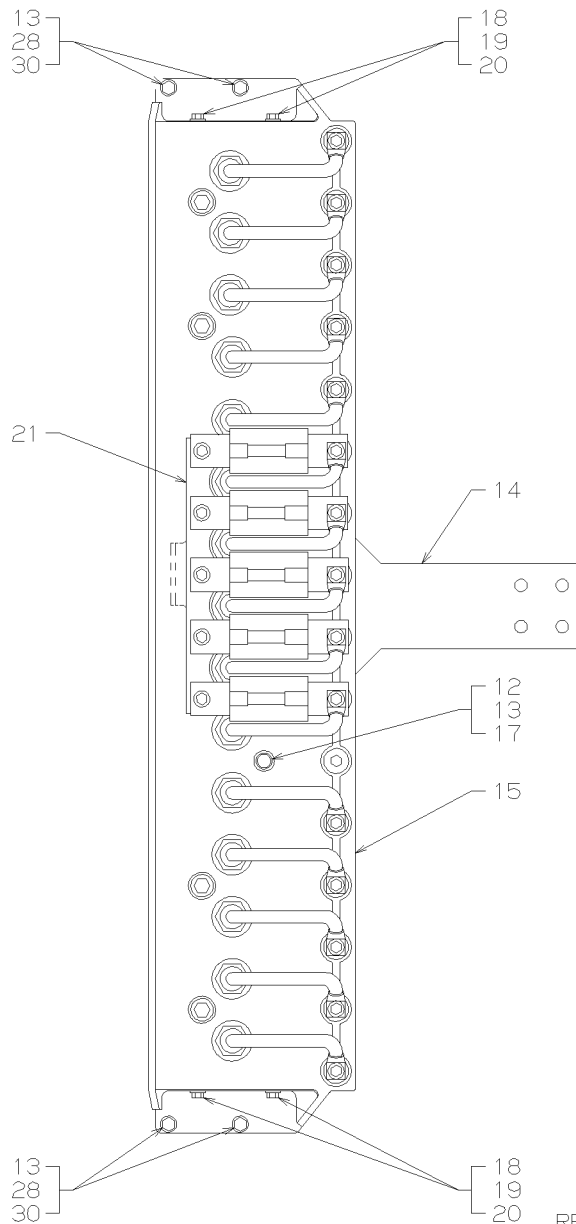
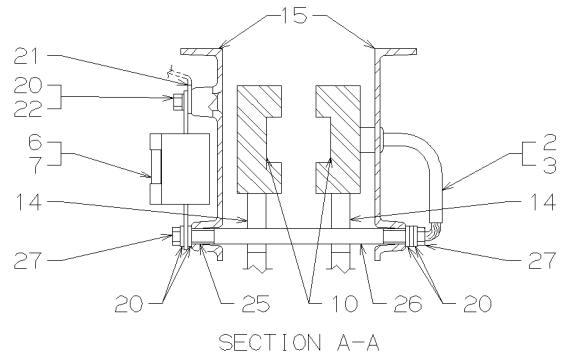
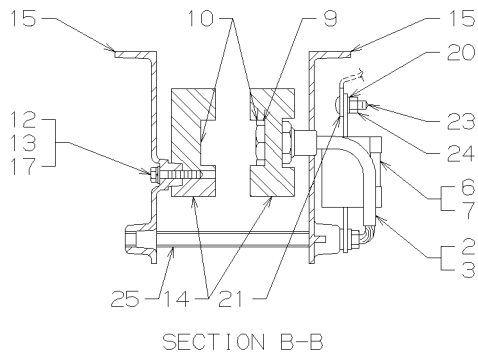
Assembly 91: GENERATOR AR10A5-D14



EE34512

Asm - Ref. No.	Part Number	Qty.	Description
91-1	8441144	1	GENERATOR ASSEMBLY.. AR10A5-D14
-2	8356273	1	STATOR ASSEMBLY.. Generator - AR10A5 - See page 7-7
-3	40021950	1	STATOR ASSEMBLY.. Alternator - D14 - See page 7-8
-4	9320959	1	HOUSING ASSEMBLY.. End
-5	9337330	1	ROTOR ASSEMBLY.. Generator - AR10A5-D14 - See page 7-14
-6	8421740	1	BOX EQUIPPED.. Air - AR10A5-D14 - See page 7-13
-7	9084995	2	BANK ASSEMBLY.. Rectifier - Generator - See page 7-19
-8	8390572	1	CLOSURE ASSEMBLY.. Stator (not shown) - See page 7-20
-9	8405528	1	SEAL.. Bearing - Generator - Inner
-10	8418657	1	CAP.. Bearing - Generator
-11	8418959	2	GASKET.. Bearing cap and cover - Generator
-12	9442069	1	BEARING.. Roller - Generator (without grease hole - optional)
-13	9507146	AR	GREASE.. Bearing - Generator - 35 pound pail - 33 ounces required (not shown)
-13	9507147	AR	GREASE.. Bearing - Generator - 120 pound drum (optional - not shown)
-14	8418962	1	RING.. Insulating - Bearing housing - Generator
-15	8418960	1	HOUSING ASSEMBLY.. Bearing - Generator
-16	8418689	1	COVER ASSEMBLY.. Bearing - Generator
-17	8405881	2	STUD.. Brush holder (not shown)
-18	8405880	2	TUBE.. Insulation (not shown)
-19	8405527	1	SEAL.. Bearing - Outer
-20	8405536	8	TUBE.. Insulating - Bearing housing bolt - .958 inch long
-21	9531329	8	WASHER.. Insulating
-22	9531331	8	WASHER.. Special - 1-1/2 O.D. x 25/32 I.D. x 3/16 inch thick
-23	271773	22	BOLT.. Hex head 3/4-10 x 2-1/2
-24	443734	6	BOLT.. Hex head 1/2-13 x 6 - Bearing cap and cover
-25	8345873	1	PLATE .. Retaining - Slip ring - Generator
-26	8441790	1	GROMMET.. Cable - Rotor coil to slip ring
-27	8345866	1	RING ASSEMBLY.. Slip - Collector - Generator - See page 7-10
-28	8413189	4	HOLDER ASSEMBLY.. Brush - Generator - AR10
-29	8434285	4	SPRING.. Brush holder
-30	40034666	4	BRUSH.. Carbon - AR10 - Grade N39
-31	8413188	4	HOLDER ASSEMBLY.. Brush - D14
-32	8434285	4	SPRING.. Brush holder
-33	8413190	4	BRUSH.. Carbon - D14- Grade AY
-34	131046	22	WASHER.. Lock 3/4
-35	271774	8	BOLT.. Hex head 3/4-10 x 2-3/4
-36	8374003	3	TRANSFORMER.. Current - Generator
-37	8380922	6	RESISTOR.. Filter - Generator - 5 Ohms - 50 Watts
-38	9332014	6	CAPACITOR.. Filter - Generator
-39	8398093	2	CLEAT ASSEMBLY.. Cable - Alternator
-40	8398094	1	CLEAT ASSEMBLY.. Cable
-41	8398095	1	CLEAT ASSEMBLY.. Cable
-42	8433714	1	COVER ASSEMBLY.. Slip rings
-43	8497822	1	SEAL.. Cover - 55 inches long (not shown)
-44	8408426	1	SUPPORT.. Cable (not shown)
-45	9562319	1	NAMEPLATE.. High Voltage (not shown)

Rectifier Bank



EE40114

Asm - Ref. No.	Part Number	Qty.	Description
91-1	9084995	2	BANK ASSEMBLY.. Rectifier - Generator- 2800 Volts - Molded
			<i>The following component breakdown is for one Rectifier Bank only.</i>
-2	40029132	15	DIODE.. Silicon - Rectifier bank - Positive base
-3	8378316	15	BOOT.. Insulating - Diode lead
-4	40029131	15	DIODE.. Silicon - Rectifier bank - Negative base
-5	8378316	15	BOOT.. Insulating - Diode lead
-6	8346478	15	FUSE ASSEMBLY.. Indicator - Diode - Alternator
-7	8386467	15	INDICATOR.. Diode fuse
-8	8389353	30	CLAMP.. Fuse indicator (not shown)
-9	40022670	30	NUT ASSEMBLY.. Diode lock - Includes washer
-10	8346492	6	RETAINER.. Diode lock nut
-11	180122	8	BOLT.. Hex head 3/8-16 x 1 - Lock nut retainer
-12	120382	12	WASHER.. Lock 3/8
-13	120394	20	WASHER.. Flat 3/8
-14	8357508	2	HEATSINK ASSEMBLY.. Diode
-15	9085001	2	HOUSING ASSEMBLY.. Rectifier
-15A	9085004	6	INSERT.. Hex 5/16-18 (not shown)
-16	40060878	2	PAD
-17	180128	4	BOLT.. Hex head 3/8-16 x 1-3/4
-18	180079	8	BOLT.. Hex head 5/16-18 x 1 - Rectifier end
-19	120214	8	WASHER.. Lock 5/16
-20	8379915	83	WASHER.. Special 5/16- Brass
-21	8346475	3	BUS BAR.. Fuse
-22	9425427	6	BOLT.. Hex head 5/16-18 x 1
-23	8375722	9	BOLT.. Round head 5/16-18 x 1-1/4
-24	8035145	5	NUT.. Hex lock 5/16-18
-25	8357460	15	BAR.. Hexagon - Diode mounting
-26	9085003	4	SLEEVE.. Insulating
-27	9417958	30	BOLT.. Hex head 5/16-18 x 7/8 - Diode terminal to bar
-28	8035146	4	NUT.. Hex lock 3/8-16
-29	8346481	AR	COMPOUND.. Joint - Sold in 5 ounce tube - Applied to diode contact at rear prior to mounting (not shown)
-30	180126	4	BOLT.. Hex head 3/8-16 x 1-1/2

A	B	C	D	E
NO	ITEM DESCRIPTION	PART NUMBER	QUANTITY	
1	NEGATIVE BASE DIODE	40029131	300	
2	POSITIVE BASE DIODE	40029132	300	
3	FUSE ASSY	8346478	300	
4	FUSE INDICATOR	8386467	100	