

QUOTATION

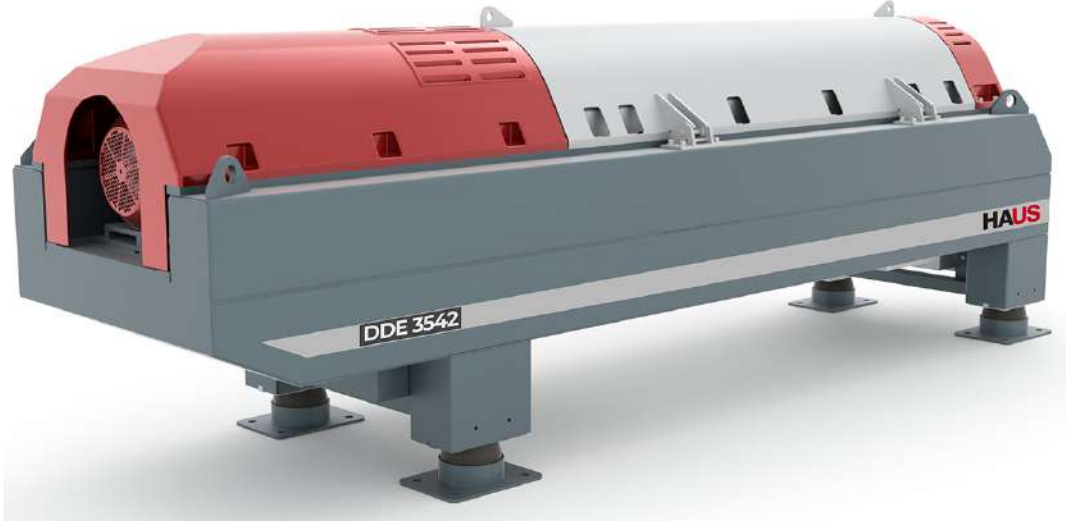
HAUS
CENTRIFUGE TECHNOLOGIES



www.hausworld.com

Quotation No : TM 23110174 - ABSUN ZOLAL CO.

Date : 02.11.2023



HAUS provides decanter centrifuges, disc stack separators, continuous system olive oil plants, screw presses, turbo blowers, and auxiliary equipment for drinking and waste water treatment facilities, food industry, dairy industry, mining, animal - vegetable oil processing and extraction, biogas facilities, oil - petroleum derivative waste processing facilities and drilling.

HAUS continues its activities by exporting to 75 countries both in the country and abroad with a total of more than 550 employees in the factory established on an area of 32.000 square meters in Aydın ASTİM Organized Industrial Zone.

The HAUS has ISO 9001:2008, ISO 14001:2004, ISO 22000:2005, OHSAS 18001:2007 certificates. The safety measures taken during operation of the machines comply with CE directives.

The offer we have prepared for your project is presented below for your valuable information.

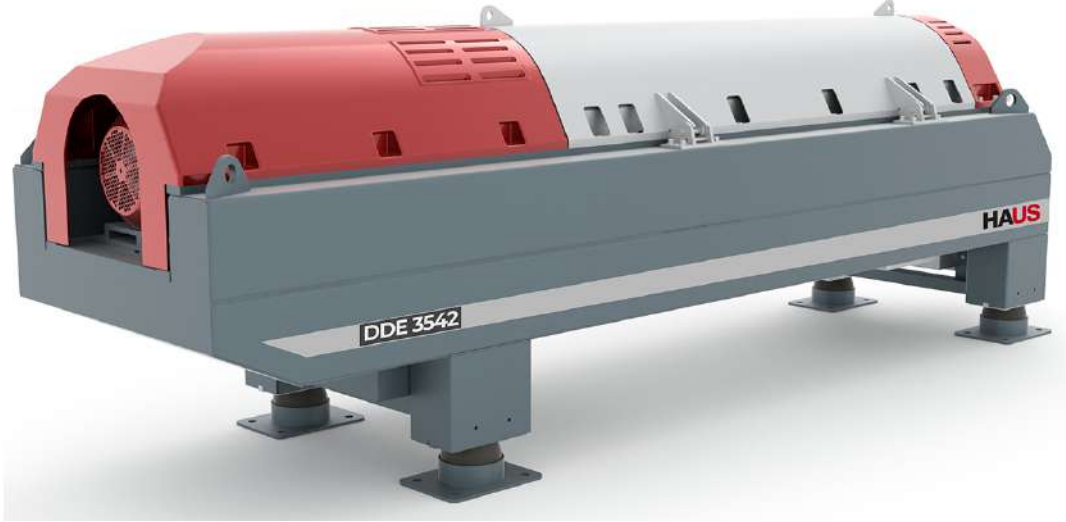
We state that we will be happy to assist you with your questions on all technical and commercial issues.

Quotation No : TM 23110174

Date : 02.11.2023

2. WORKING PRINCIPLE

2-1. DDE 3542 G-15-01-02-01 DECANTER



DDE Series Decanter Centrifuge is a decanter centrifuge: horizontal rotating bowl, 2-phase configuration, continuous discharge of sludge through scrolling conveyor, dual-drive type, variable differential speed.

The HAUS DDE decanters are developed for the processing of industrial sludges. The high bowl speeds combined with the high torque guarantee an optimal dewatering efficiency. The DDE decanters can be adjusted for maximum performance by:

- Adjustable bowl speed and providing the necessary G force;
- Adjustable scroll speed;
- Adjustable pond depth in the bowl for the best liquid clarity and best dry solids content in the cake.

Quotation No : TM 23110174

Date : 02.11.2023

4. TECHNICAL SPECIFICATIONS

4-1. CONTROL PANEL - DECANTER - PLC - 22-7.5



PLC Brand Model	: Siemens S7 1200
Touch Screen Brand and Model	: Siemens Ktp700 Basic 7" Hmi
Protection Class	: IP54
Panel Type	: Free Standing Type
Panel Material	: Sheet metal , Painted Ral 7035
Main Supply Voltage (V)	: 400VAC
Frequency (Hz)	: 50 Hz
Cable Entries	: Bottom
Frequency Inverter Brand	: Danfoss FC302
Panel Communication Protocol	: Profinet , Modbus TCP/IP
Working Conditions	
Temperature	: 5 - 40 °c
Relative Humidity	: 5 to 85%, in presence of corrosive gases 60%
Voltage Tolerance	: ± 5 % (relative to mains voltage)
Frequency Tolerance	: ± 2 % (relative to main frequency)

Quotation No : TM 23110174

Date : 02.11.2023

Ancillary Equipments Included in the Offer

1-SLIDE GATE-CENTRATE CHUTE
Duplex 1.4462

2-HPU 3000 POLYMER UNIT (Without Panel)
Capacity: 3000L
Material: SS304
Mixer Motors: ABB/RAL5010

3-POLYMER PUMP
Netzsch, Capacity:1-4 m³/h
Rotating Parts: AISI 316 stainless steel
Rotor: AISI 316 stainless steel
Reducer Motor: NORD
Power: 1,5kW 3P-400V,3XPTC

4-SLUDGE PUMP
Netzsch, Capacity:4-12 m³/h
CRC coating
Body: Duplex 1.4462 special alloy steel
Rotating parts: DUPLEX 1.4462 special alloy steel
Rotor: DUPLEX 1.4462 special alloy steel
Reducer Motor: NORD
Power: 2,2kW 3P-400V,3XPTC

5-FLOWMETER (polymer line)
Endress-Hauser
DN25

6-FLOWMETER (sludge line)
Endress-Hauser
DN40

7-PANEL DIFFERENCES
30 kw Bowl VFD
11 kw Scroll VFD
3 kw Sludge Pump VFD x 2
2,2 kw Polymer Pump VFD x2
Controlling Polymer Unit

8-CONVEYOR
Material: Duplex 1.4462
Capacity: 2.8 ton/h
Lenght: 4 meters
Shaftless & Horizontal
Mixer Motors: ABB/RAL5010