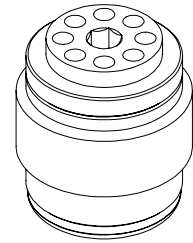
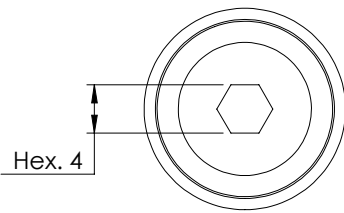
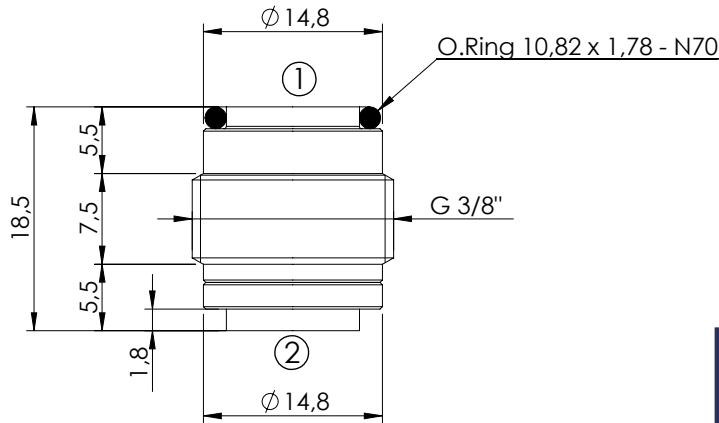
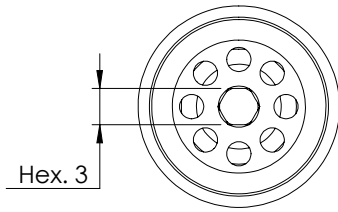


CHECK VALVE

CDVN-030-SSNS

MONO DIRECTIONAL
SPHERE TYPE



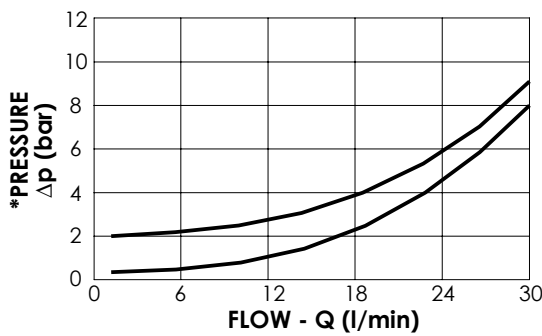
SPECIFICATIONS

Max. operating pressure: **350 bar**

Rated flow: **30 l/min**

Cavity: **VP000310**

Weight: **0,02 kg**



NOTES

Installation torque: **8 Nm**

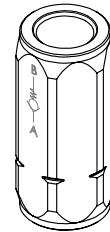
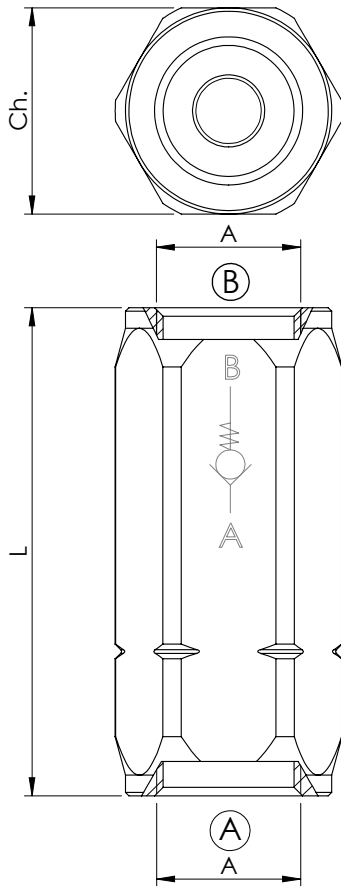
ORDERING CODES

Quick code	Description	Cracking pressure (bar)	
CD000029	CDVN-030-SSNS-FN-310-N002	2	
CD000058	CDVN-030-SSNS-FN-310-N000	0	

CHECK VALVE

CDVN-XXX-PSNP

SLEEVE
POPPET TYPE

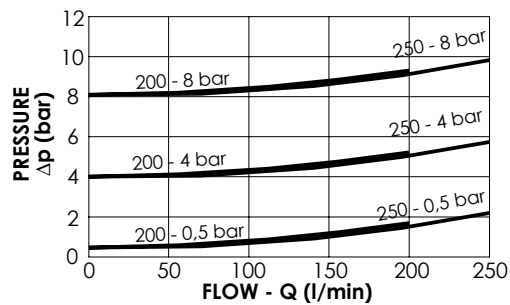
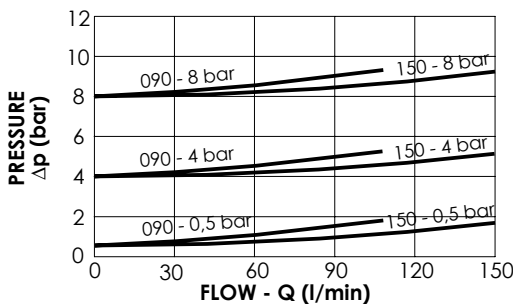


SPECIFICATIONS

Max. operating pressure: **350 bar**

Rated flow: **90 - 250 l/min**

Body: **Zinc plated steel**



ORDERING CODES

Quick code	Description	Rated flow (l/min)	Cracking pressure (bar)	Dimension		
				A	L	CH
CD000277	CDVN-090-PSNP-FF-G12-N008	90	8	G 1/2"	71	30
CD000278	CDVN-150-PSNP-FF-G34-N008	150	8	G 3/4"	83	36
CD000279	CDVN-200-PSNP-FF-G10-N008	200	8	G 1"	106	45
CD000280	CDVN-250-PSNP-FF-G11-N008	250	8	G 1" 1/4	127	55
CD000287	CDVN-090-PSNP-FF-G12-N004	90	4	G 1/2"	71	30
CD000288	CDVN-150-PSNP-FF-G34-N004	150	4	G 3/4"	83	36
CD000289	CDVN-200-PSNP-FF-G10-N004	200	4	G 1"	106	45
CD000290	CDVN-250-PSNP-FF-G11-N004	250	4	G 1" 1/4	127	55
CD000281	CDVN-090-PSNP-FF-G12-N001	90	0,5	G 1/2"	71	30
CD000282	CDVN-150-PSNP-FF-G34-N001	150	0,5	G 3/4"	83	36
CD000283	CDVN-200-PSNP-FF-G10-N001	200	0,5	G 1"	106	45
CD000284	CDVN-250-PSNP-FF-G11-N001	250	0,5	G 1" 1/4	127	55
CD000212	CDVN-050-PSNP-FF-G38-N001	50	0,5	G 3/8"	62	22