

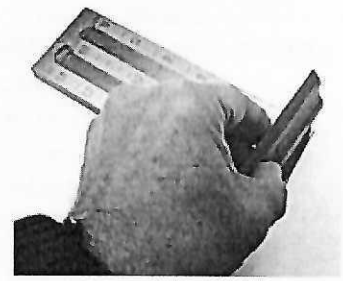
GRINDOMETERS – FINENESS OF GRIND GAUGES

VF2110, VF2111, VF2112, VF2113

DATASHEET

PRODUCT DESCRIPTION

Precision instrument to determine particle size and fineness of many materials like paints, lacquers, pigments, filler, chocolate etc.. Most TQC Grindometers have double grooves with graded slopes graduated in three different parameters: Microns, NS (Hegman) and PCU (North). Gauge and beveled scraper are made of hardened stainless steel and have an accuracy of 2 µm.



BUSINESS

Food industry, laboratory, pharmaceutical industry

STANDARDS

Look up the appropriate standard for a correct execution of the test.
ASTM D1210, ASTM D1316, DIN 53203, DIN EN ISO NF21524, FTMS 141 a M.4411.1 ISO1524, NFT 30 046

FEATURES

- Precision instrument
- Ergonomic shaped scraper, for an easy grip.
- Many models available

SCOPE OF SUPPLY

- Pouch
- Grindometer
- Scraper
- Manual

ORDERING INFORMATION

VF2110 Grindometer FM15/2 Din- ISO
 ✓ VF2112 Grindometer FM50/2 Din- ISO ✓

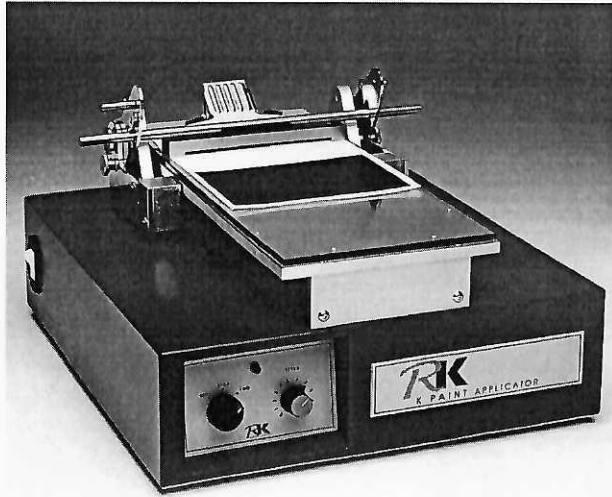
VF2111 Grindometer FM25/2 Din-ISO
 VF2113 Grindometer FM100/2 Din- ISO

SPECIFICATIONS

Base :	175 x 60 x 12mm with 120mm groove length Tolerance: ±2µm Stainless steel	Scraper:	75 x 38 x 8mm shaped to be hold easily Stainless steel
VF2110	Grindometer FM15/2 Din-ISO Range: 0-15 micron, 10-8,5 PCU, 8-6,8 Hegman Graduation: 1,5 micron Double groove		

K CONTROL COATER

K PAINT APPLICATOR



K PAINT APPLICATOR

Used for the application of paints to produce highly accurate and repeatable coatings in an instant. The machine uses gap applicators to coat onto paint test charts, steel panels and many other substrates. This may then be used for many applications including quality control, weather testing, opacity and other standard tests such as colour matching and customer presentation samples.

MAIN FEATURES

- A custom version of the K101 created especially for paints etc.
- May be used with most standard gap applicators including Bird, Cube, 4-Sided etc. using the K101 push bar for gap applicators
- Conforms to ASTM D823 - 95(2001) - producing films of uniform thickness
- Other coatings such as plastisols and adhesives may also be applied

GAP APPLICATORS

Adjustable or fixed gap applicators are available. These are widely used for higher viscosity or thixotropic materials and for high coat weights.

MICROMETER ADJUSTABLE APPLICATOR



This applicator incorporates an adjustable spreading blade using micrometers, to accurately set the substrate/blade gap from 0-10mm in 10 μ m increments, providing an extremely versatile tool. Available in coating widths of 100mm, 150mm, 200mm, 250mm and 300mm, and produces a wet film thickness of 50-80% of the gap setting.

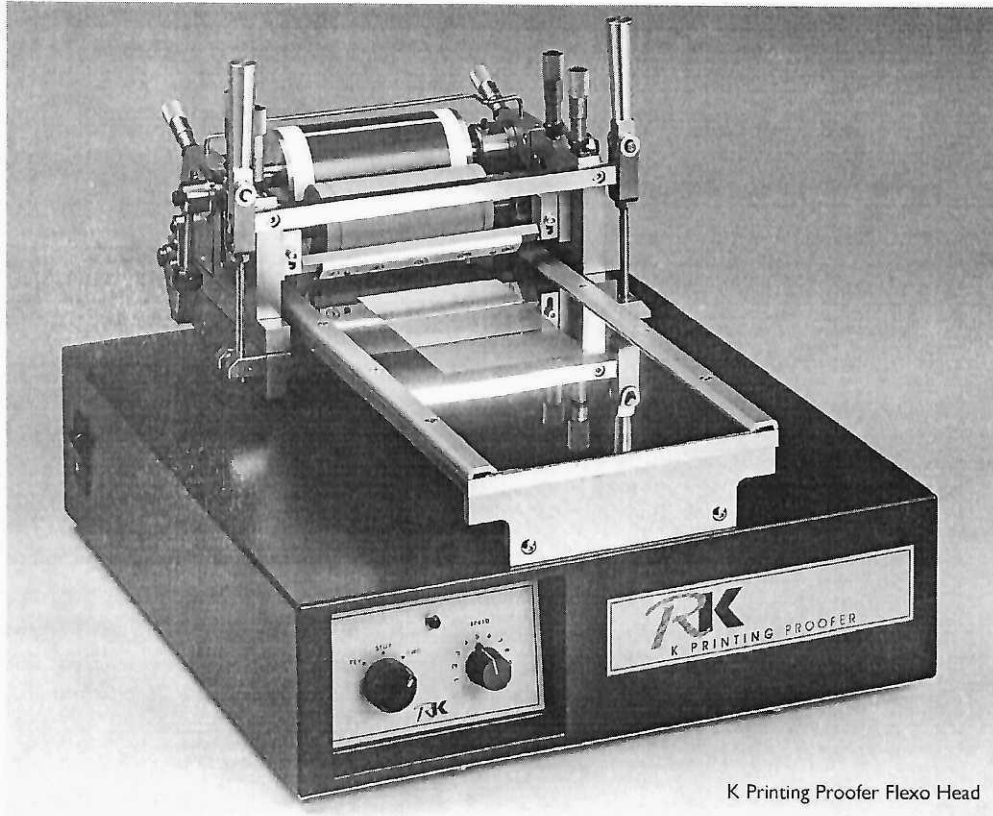
K WEDGE BAR



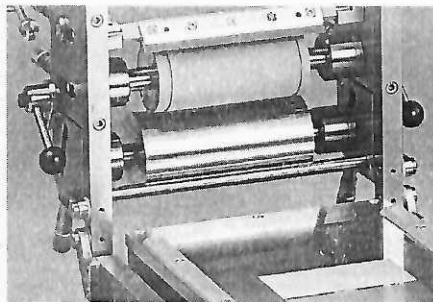
An economical form of fixed gap applicator, produced by winding wire onto a stainless steel rod. Gaps between 50 and 1500 μ m are available.

The wet film thickness is approximately equal to half the gap size, and a coating width of 100mm or 200mm is produced.

K PRINTING PROOFER



K Printing Proofer Flexo Head



Above:
Detail of the K Printing Proofer Flexo Head

High quality proofs using gravure, gravure-offset or flexo inks are produced instantly using the K Printing Proofer. Featuring electronically engraved printing plates and variable printing speeds of up to 40m/min, this is an essential tool for all those involved in the manufacturing or use of liquid inks. Ideal for R & D and computer colour matching data, quality control and presentation samples. The K Printing Proofer is very easy to clean and all parts are solvent resistant.

MAIN FEATURES

- Almost any flexible substrate can be printed or laminated
- Excellent printability ensured by micrometer control
- Multiple ink samples may be printed simultaneously for comparison purposes
- High printing speeds enable use of inks nearing press viscosity
- Easy to operate with a footprint of just 400 x 500mm



REPEATABLE
SAMPLES



RESEARCH +
DEVELOPMENT



QUALITY
CONTROL



GLOBAL
SUPPORT

LABSTAR Laboratory Agitator Bead Mill

For the laboratory of

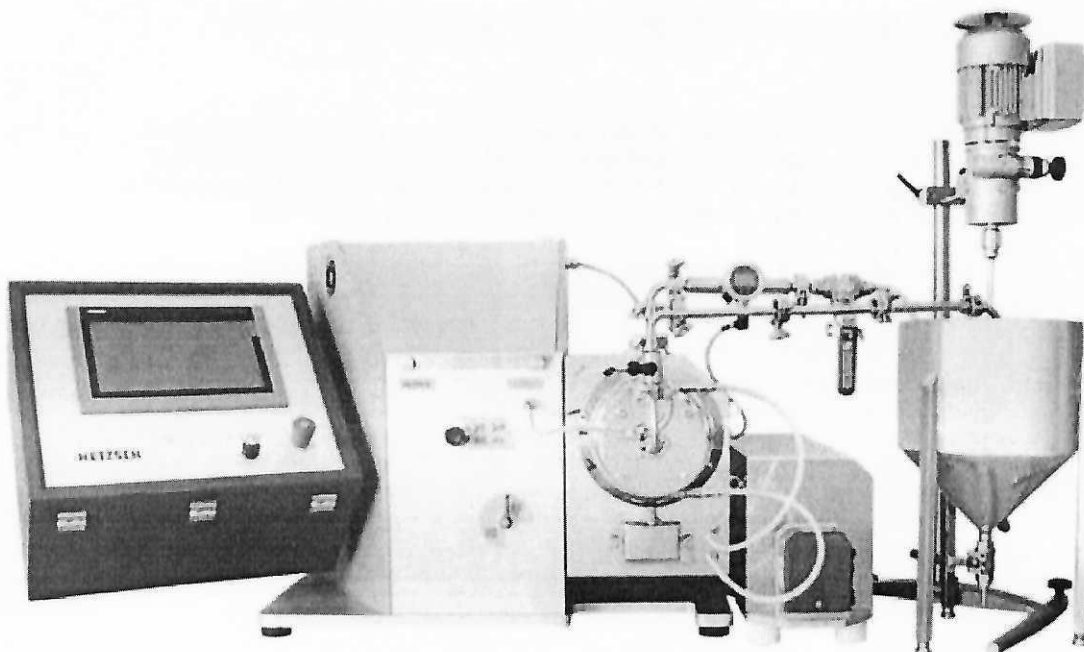
The *LABSTAR* facilitates scientific academic work for all research and development tasks. The grinding and dispersing results from the tests on a laboratory scale with finenesses down to the nanometer range are exactly transferrable to production scale.

- Are you looking for precision and know-how?
- Do you expect accurate and reproducible results?
- Do you want to be completely flexible with no restrictions on your scientific curiosity?
- Are you looking for an all-round solution for a wide variety of tasks?
- Do you want to test different grinding systems on one platform?

... our *LABSTAR* is an extremely flexible laboratory mill, which meets all of these requirements and simplifies your day-to-day work.

Your Benefits

- Clean operation
- Easy handling
- Lowest product use
- Versatile applications
- Extensive information
- High reproducibility
- Exact scale-up





x-rite PANTONE®



eXact Advanced Spectrophotometer

Providing Color Measurement Excellence

The preferred instrument of ink labs and quality control labs, the eXact Advanced spectrophotometer is designed to help you achieve the highest quality product with the broadest toolset. In addition to ensuring color validation of CMYK and spot-color inks, simultaneous measurements of four M modes, embedded Bluetooth capability, and enhanced colorimetric functionality, the eXact Advanced includes functions to evaluate ink and paper prior to, during, and after print production; saving time and reducing waste for your operation.

The eXact Advanced is a unique combination of hardware and software programming to help your operation get color right the first time and every time.



Advanced Quality Control Management

- Provides features to evaluate paper and ink, such as Paper Indices, Metamerism, Color Strength, Opacity, and dE^* Trend
- Measures ink and paper prior to, during, and after print production to help streamline efficiencies
- Provides substrate analysis capabilities with the Brightener Index Function

Enhanced Colorimetric Functionality

- Drives workflow confidence for each job as tools can be locked, customized, and individualized with multiple user capabilities
- Provides a full range of aperture sizes to allow for job flexibility as your business needs change
- Leverages the reflectance graph to demonstrate the spectral reflectance of a substrate or ink
- Measures the concentration of a specific ink with absolute and relative color strength features
- Engages the opacity feature to measure the difference of a substrate or ink over white and over black
- Generates the color difference up to three different illuminants with the Metamerism feature
- Leverages BestMatch to provide you with the guidance you need to help determine if you can achieve a closer match to a specific color standard adjusting ink on press
- Supports all ISO conditions meeting all of your customer needs - G7, PSO, ISO, and Japan Color
- Embedded Pantone libraries for access to industry-leading color reference standards

For more information regarding this product, visit www.xrite.com/exact-advanced

Specifications

Battery Type	Rechargeable lithium ion
Operation (hours)	17+
Readings per charge	20.000+
Memory	8MB, 2,000 readings
Operating Temperature	15-40°C (60-104°F)
Operating Humidity	Up to 85%, non condensing
Commodity Code	9027 5000

Dimensions & Weights

Dimensions	65mm x 140mm x 50mm (H x W x D)
Instrument Weight	390g
Packed weight	1.6kg
Packed dimensions	110mm x 280mm x 220mm (H x W x D)

Order Codes

Novo-Gloss 60	A4000-008
Novo-Gloss Trio 20/60/85	A4000-006
Novo-Gloss 20/60/85 with Haze	A4000-009
Novo-Gloss 45	A4000-011
Mirror gloss calibration standard	B6000-101

Free extended 2 year warranty: Requires registration at www.rhopointinstruments.com within 28 days of purchase. Without registration, 1 year standard warranty applies.

Free light source warranty
Guaranteed for the life of the instrument.

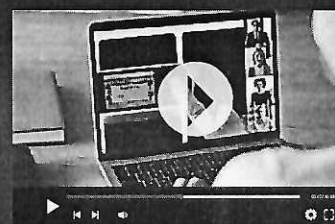
Calibration and service: Fast and economical service via our global network of accredited calibration and service centres. Please visit www.rhopointinstruments.com for detailed information.

Languages:



Included accessories

- Certified calibration tile with certificate
- USB data cable
- Wrist strap
- Novo-Gloss Multi Gauge software
- Instructional videos
- USB data stick
 - Instruction manual
 - BT wireless data app
 - Example Excel spreadsheets



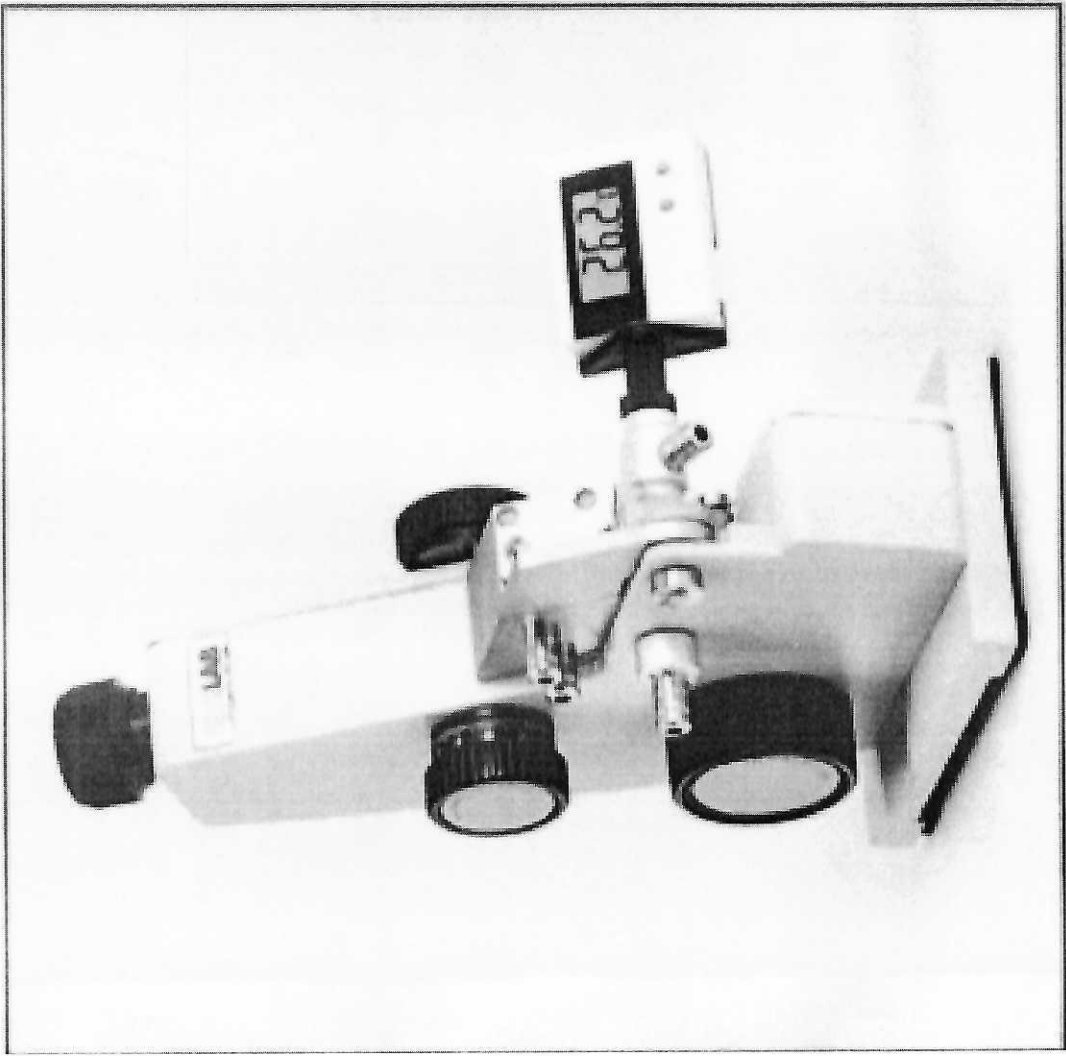
✓

REFRACTOMETER-ABBE™

- Large optical prism enables excellent boundary line brightness and contrast during measurements.
- Adjustable wide field eyepiece with 10X magnification, enables bright and clear images. Super contrast, optical system with 30X magnification guarantees sharp images.
- Equipped with movable, hinged covers to keep light out. Offers connection possibility to a thermostatic circulator.
- Featured with a digital thermometer with a large LCD display. Temperature reading is selectable as °C or °F with a precision of 0.1 °C or 0.1 °F.

catalogue number	618.41.001
external dimensions (mm)	270 x 180 x 370
refractive index (nD)	1,3000 - 1,7000
dissolved solid Brix (%) accuracy	0 - 95 ± 0.0002
water inlet / outlet Ø (mm)	10
digital thermometer	LCD display - 34 x 14 mm
temperature range (°C)	0 - 70
temperature uniformity (°C)	± 0.1

catalogue number	measuring range	measuring range	division
618.32.001	%Brix	refractive index	Brix / RI
	0 - 95	1.3330 - 1.5400	0.1 / 0.0001
			ATC
			yes



➤ Ideal for precise measurement and determination of refractive index and % Brix values of liquid, solid, semi-solid and powder samples. Simple handling and easy to use. Calibration can be done easily with supplied calibration prism.