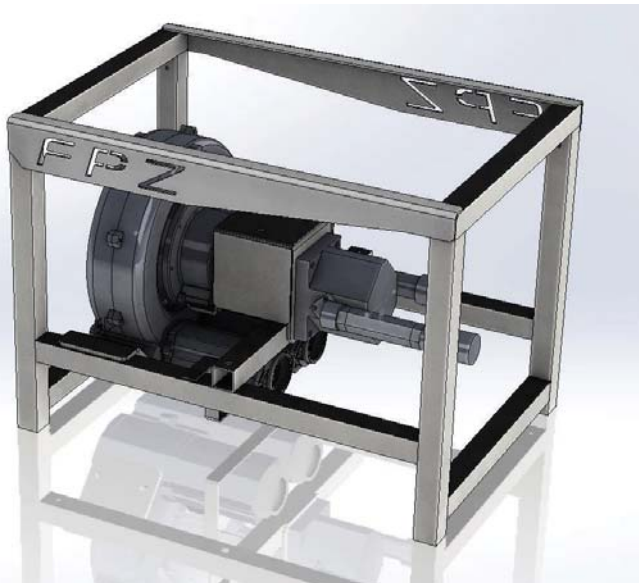
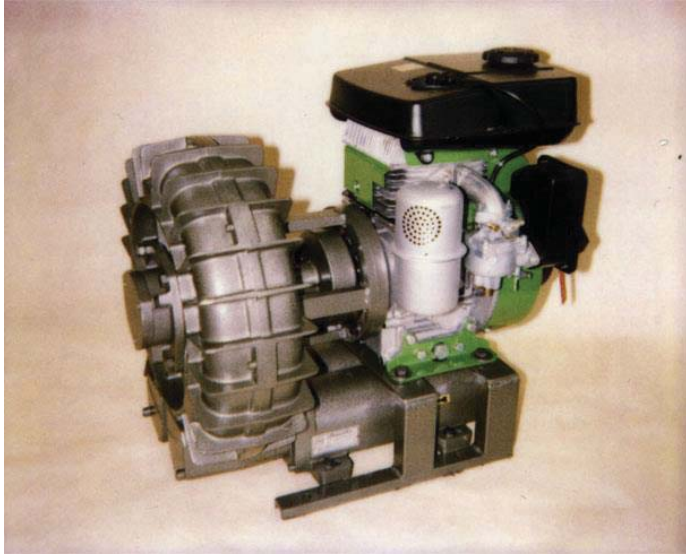




YOUR PARTNER
IN COMPRESSION
TECHNOLOGY

Special Project



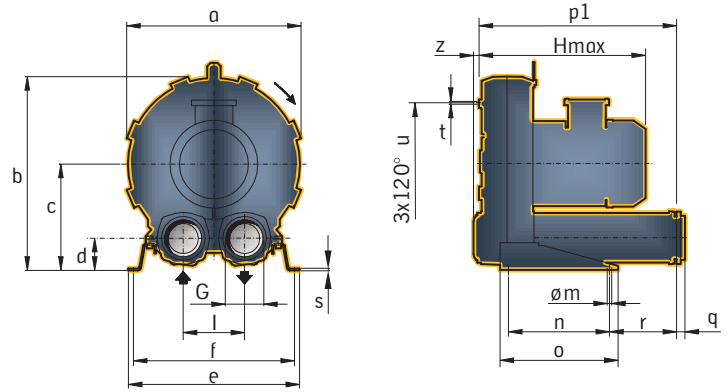
NEW RANGE OF COMPRESSION



AIR END COMPRESSOR AS PART OF PACKAGE - IE2

MS

K03 / K04 / K05 / K06 / K07 / K75
K08 / K09 / K10 / K11 / K12

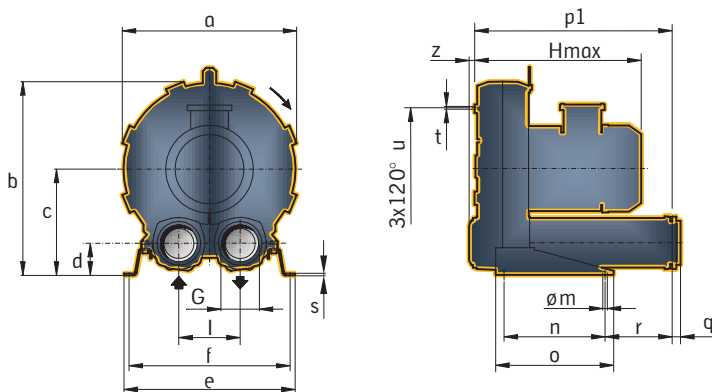


Mod	a	b	c	d	e	f	G	l	øm	n	o	p1	q	r	s	t	u	z	Hmax*
K03 MS	241	268	147	43	230	205	G 1" 1/4	86	10	83	142	205	18	75	4	M6	140	12	300
K04 MS	285	315	172	49	255	225	G 1" 1/2	102	12	95	171	222	18	70	4	M6	175	18	335
K05 MS	327	365	200	54	325	260	G 2"	120	15	115	265	320	18	98	4	M8	200	19	375
K06 MS	376	393	205	54	325	290	G 2"	125	15	140	265	334	18	85	4	M8	240	19	385
K07 MS	424	481	269	82	470	438	G 3"	155	13	300	350	512	25	137	5	M8	295	16	450
K75 MS	424	481	269	82	470	438	G 3"	155	13	300	350	512	25	137	5	M8	295	16	450
K08 MS	457	498	269	82	480	448	G 3"	155	13	300	350	512	25	137	5	M8	310	16	485
K09 MS	492	561	315	96	510	478	G 4"	182	13	300	350	586	25	199	5	M8	360	16	590
K10 MS	516	573	315	96	510	478	G 4"	182	13	300	350	586	25	199	5	M8	360	16	635
K11 MS	542	603	332	91	540	508	G 4"	200	13	300	350	596	25	204	5	M8	390	16	640
K12 MS	548	606	332	91	540	508	G 4"	200	13	300	350	599	25	204	5	M8	390	13	645

AIR END COMPRESSOR AS PART OF PACKAGE - IE2

MD

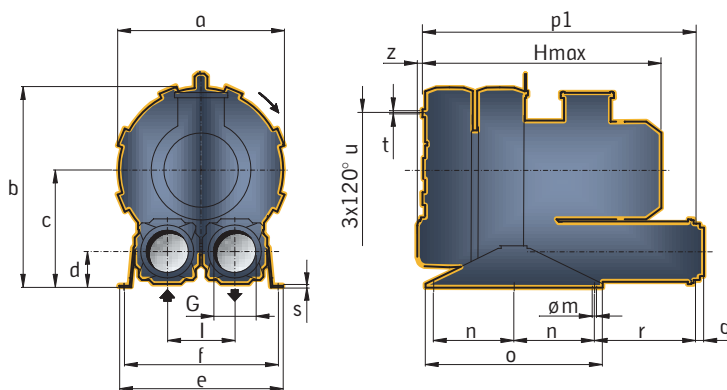
K07R / K08R / K09 / K10 / K11 / K12
R20 / R30 / R40



Mod	a	b	c	d	e	f	G	l	ø _m	n	o	p1	q	r	s	t	u	z	H _{max} *
K07R MD	424	481	269	82	470	438	G 2"	155	13	300	350	418	18	43	5	M8	295	16	450
K08R MD	457	498	269	82	480	448	G 2"	155	13	300	350	418	18	43	5	M8	310	16	485
K09MD	492	561	315	96	510	478	G 4"	182	13	300	350	644	25	257	5	M8	360	16	500
K10 MD	516	573	315	96	510	478	G 4"	182	13	300	350	644	25	257	5	M8	360	16	590
K11 MD	542	603	332	91	540	508	G 4"	200	13	300	350	654	25	262	5	M8	390	16	640
K12 MD	548	606	332	91	540	508	G 4"	200	13	300	350	657	25	262	5	M8	390	13	645
R20 MD	283	309	167	47	235	210	G 1" ¼	90	10	150	200	345	18	45	22	M6	150	-	340
R30 MD	319	346	187	47	235	210	G 1" ¼	90	10	150	200	354	18	45	22	M6	180	-	390
R40 MD	350	372	197	47	235	210	G 1" ¼	90	10	150	200	364	18	45	22	M8	225	-	440

TS

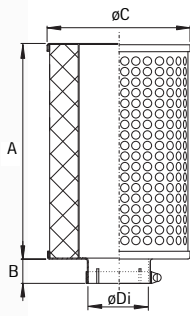
K05 / K05-66 / K06 / K07
K08 / K09 / K10 / K11 / K12



Mod	a	b	c	d	e	f	G	l	ø _m	n	o	p1	q	r	s	t	u	z	H _{max} *
K05 TS	327	422	258	77	404	374	G 3"	150	13	300	345	634	25	328	4	M8	200	19	500
K05-66 TS	327	365	200	54	325	290	G 2"	120	15	140	265	428	340	18	85	4	M8	200	495
K06 TS	376	455	267	75	404	374	G 3"	155	13	150	345	662	25	335	4	M8	240	19	585
K07 TS	424	531	319	98	470	438	G 4"	182	13	250	550	802	25	299	5	M8	295	16	620
K08 TS	457	548	319	98	480	448	G 4"	182	13	250	550	802	25	299	5	M8	310	16	620
K09 TS	492	610	365	112	510	478	G 5"	210	13	250	550	850	35	315	5	M8	360	16	790
K10 TS	516	623	365	112	510	478	G 5"	210	13	250	550	850	35	315	5	M8	360	16	790
K11 TS	542	650	380	106	540	508	G 5"	228	13	250	550	870	35	320	5	M8	390	16	805
K12 TS	548	653	380	106	540	508	G 5"	228	13	250	550	883	35	320	5	M8	390	13	820

AIR END COMPRESSOR AS PART OF PACKAGE - IE2

Indoor intake filter - Ansaugfilter (Indoor-Ausführung) - Filtre d'aspiration pour intérieur

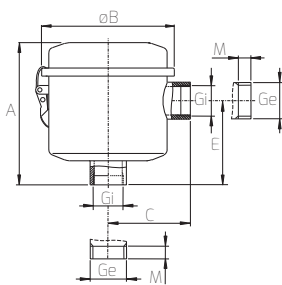


Mod	DN	A	B	øC	øDi	Flow Rate Volumenstrom Débit [m³/h]	Weight Gewicht Poids [kg]
FA 4	32	126	23	126	43	100	0,63
FA 5	40	217	23	152	48.5	300	1,04
FA 6	50	217	23	152	61.5	400	1,00
FA 8	80	150	34	200	89.5	700	1,38
FA 9	100	160	38	257	115.5	1400	2,27
FA 10	125	160	38	257	141	2800	2,20

Filter Element Material Material Filterelement Matériau Élément Filtrant	Degree of Filtration - Nominal Nominale Filterfeinheit [µm] Degré nominal de filtration [µm]
Paper - Papier - Papier	25
Polyester - Polyester - Polyester	10
Stainless steel - Edelstahl - INOX	60

* Standard version filter/cartridge dimensions and characteristic data
 * Abmessungen und technische Daten des Filters/der Patrone in Standardausführung
 * Volumes et données caractéristiques du filtre/cartouche en version standard

Inline filter - Durchgangsfiltre - Filtre en ligne



Mod	DN	A	øB	C	E	Gi	Ge	M	Flow Rate Volumenstrom Débit [m³/h]	Weight Gewicht Poids [kg]*
FV 5	40	196	176	100	112	G 1" 1/2	-	-	180	2,10
FV 6	50	255	200	115	131	G 2"	-	-	280	4,65
FV 8	80	270	200	125	142	G 3"	-	-	700	3,44
FV 9	100	336	310	166	202	G 4"	-	-	750	7,15
FV 10	125	690	470	265	495	-	G 5"	40	2450	54,00

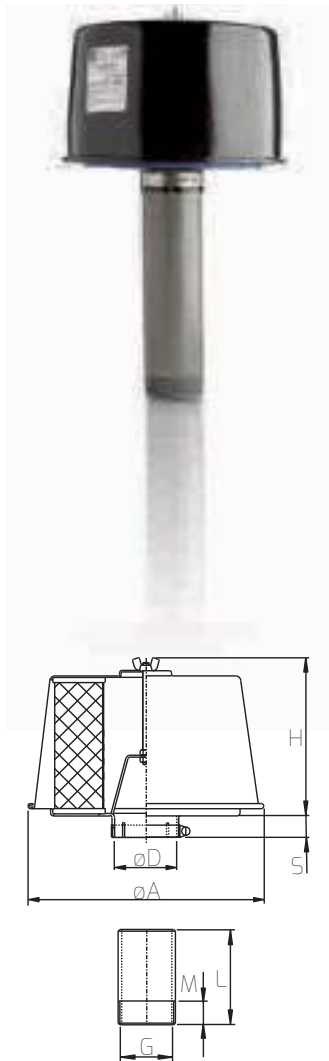
Mod	Filter/Filter Filtre	øe	h	Weight/Gewicht Poids [kg]*
CV 5	FV 5	125	155	0,53
CV 6	FV 6 FV 8	150	215	0,87
CV 9	FV 9	234	276	0,50
CV 10	FV 10	250	240	1,60

Filter Element Material Material Filterelement Matériau Élément Filtrant	Degree of Filtration - Nominal Nominale Filterfeinheit [µm] Degré nominal de filtration [µm]
Paper - Papier - Papier	25
Polyester - Polyester - Polyester	10
Stainless steel - Edelstahl - INOX	60

* Standard version filter/cartridge dimensions and characteristic data
 * Abmessungen und technische Daten des Filters/der Patrone in Standardausführung
 * Volumes et données caractéristiques du filtre/cartouche en version standard

AIR END COMPRESSOR AS PART OF PACKAGE - IE2

Cartridge filter - Ansaugfilter mit Filterpatrone - Filtre à cartouche



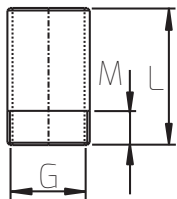
Mod	DN	øA	øD	H	S	G	L	M	Flow Rate Volumenstrom Débit [m³/h]	Weight Gewicht Poids[kg]*
FL 1	15	82	21,5	71	21	G 1/2"	100	15	25	0,20
FL 2	20	150	27	107	22	G 3/4"	130	15	85	0,60
FL 3	25	150	34	107	16	G 1"	140	15	85	0,62
FL 4	32	150	43	107	17	G 1 1/4"	200	15	85	0,61
FL 5	40	203	48,5	153	14	G 1 1/2"	200	15	250	1,32
FL 6	50	220	61,5	159	17	G 2"	200	15	400	1,56
FL 8	80	290	89,5	184	35	G 3"	200	20	700	2,60
FL 9	100	410	115,5	335	35	G 4"	200	20	1400	6,75
FL 10	125	410	141	335	35	G 5"	200	30	2800	6,70

Mod	Filter / Filter / Filtre	øe	øi	h	Weight/Gewicht/Poids[kg]*
CF 1	FL 1	55	25	54	0,05
	FL 2				
CF 4	FL 3	108	55	82	0,20
	FL 4				
CF 5	FL 5	147	80	135	0,43
CF 6	FL 6	176	80	135	0,60
CF 8	FL 8	225	100	155	1,00
CF 9	FL 9	300	215	303	1,90
	FL10				

Filter Element Material Material Filterelement Matériau Élément Filtrant	Degree of Filtration - Nominal Nominale Filterfeinheit [µm] Degré nominal de filtration [µm]
Paper - Papier - Papier	25
Polyester - Polyester - Polyester	10
Stainless steel - Edelstahl - INOX	60

* Standard version filter/cartridge dimensions and characteristic data
 * Abmessungen und technische Daten des Filters/der Patrone in Standardausführung
 * Volumes et données caractéristiques du filtre/cartouche en version standard

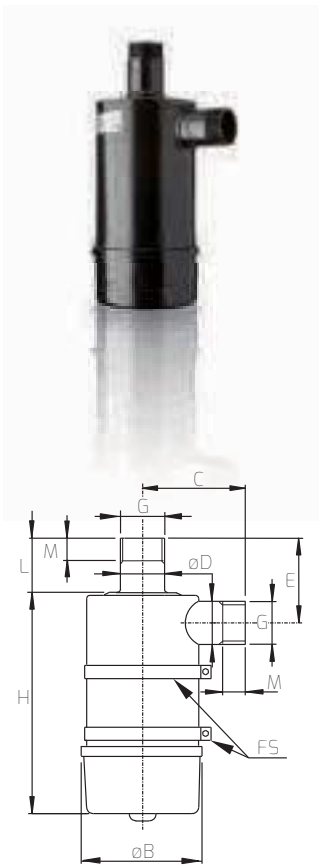
Section - Anschlussstück - Section



Mod	DN	G	L	M	Weight/Gewicht Poids [kg]
TR 1	15	G 1/2"	100	15	0,02
TR 2	20	G 3/4"	130	15	0,04
TR 3	25	G 1"	140	15	0,06
TR 4	32	G 1 1/4"	200	15	0,14
TR 5	40	G 1 1/2"	200	15	0,16
TR 6	50	G 2"	200	15	0,22
TR 8	80	G 3"	200	20	0,39
TR 9	100	G 4"	200	20	0,50
TR 10	125	G 5"	200	30	1,23

AIR END COMPRESSOR AS PART OF PACKAGE - IE2

Cyclone filter - Zyklonfilter - Filtre cyclone



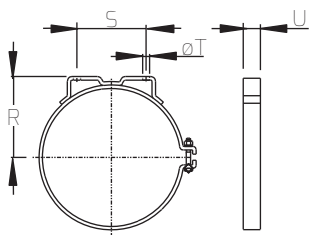
Mod	DN	øB	C	øD	E	G	H	L	M	Flow Rate Volumenstrom Débit [m ³ /h]	Weight Gewicht Poids [kg]
FC 5	40	146	130	48	126	G 1" 1/2	315	83	22	170	2,37
FC 6	50	178	156	60	140	G 2"	341	90	22	240	3,39
FC 8	80	220	157	88	174	G 3"	453	102	22	440	5,24
FC 9	100	276	225	114	204	G 4"	493	123	22	730	9,14

Mod	Filter/Filter Filtre	øe	h	Weight/Gewicht Poids [kg]*
CL 5	FC 5	104	264	0,51
CL 6	FC 6	134	290	0,93
CL 8	FC 8	155	395	1,50
CL 9	FC 9	202	421	2,11

Filter Element Material Material Filterelement Matériau Élément Filtrant	Degree of Filtration - Nominal Nominale Filterfeinheit [µm] Degré nominal de filtration [µm]
Paper - Papier - Papier	25
Polyester - Polyester - Polyester	10

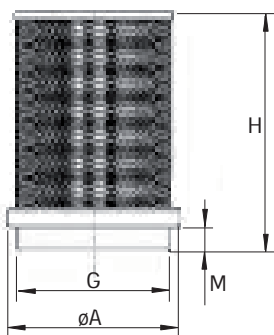
* Standard version filter/cartridge dimensions and characteristic data
 * Abmessungen und technische Daten des Filters/der Patrone in Standardausführung
 * Volumes et données caractéristiques du filtre/cartouche en version standard

Bracket - Bügel - Collier de fixation



Mod	Filter/Filter Filtre	R	S	øT	U
FS 5	FC 5	70	84	9	22
FS 6	FC 6	103	93	9	22
FS 8	FC 8	122	112	9	25
FS 9	FC 9	147	126	11.5	32

Intake protection - Ansaugschutz - Crepine à l'aspiration



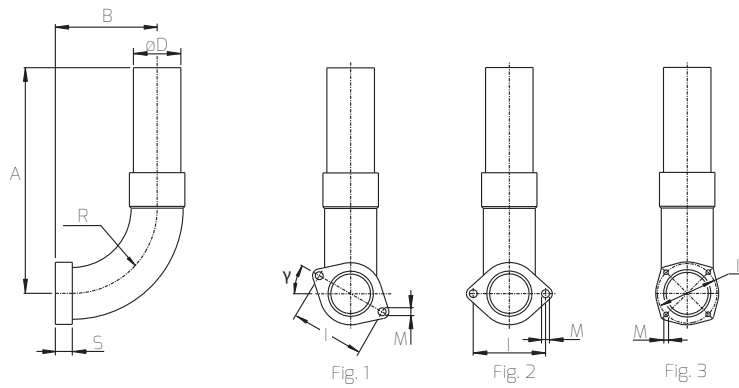
Mod	DN	øA	G	H	M	Degree of Filtration - Nominal Nominale Filterfeinheit [µm] Degré nominal de filtration [µm]	Weight Gewicht Poids [g]
IP4	32	50	G 1" 1/4	75	10	1200 µm	38
IP5	40	56	G 1" 1/2	83	11	1200 µm	47
IP6	50	69	G 2"	98	13	1200 µm	70
IP8	80	102	G 3"	138	15	2000 µm	194
IP8 N	80	102	3" NPT	138	15	2000 µm	194
IP9	100	129	G 4"	153	16	2000 µm	300
IP9 N	100	129	4" NPT	153	16	2000 µm	300

AIR END COMPRESSOR AS PART OF PACKAGE - IE2

Filter manifold - Anschlussbogen - Adaptateur



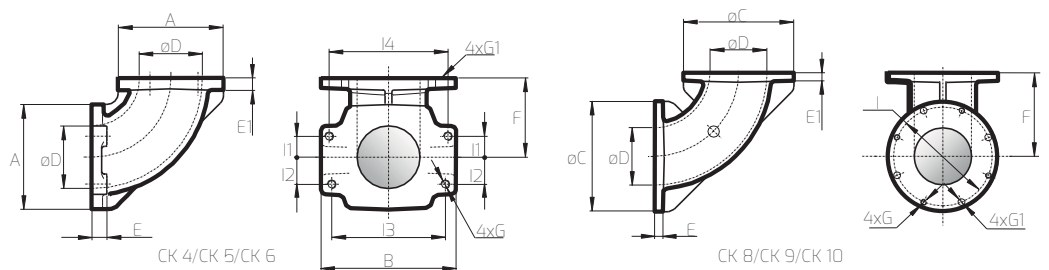
Mod	DN	A	B	øD	I	M	R	S	γ	Fig	Weight Gewicht Poids[kg]
CA 4	32	220	90	42	75	7	80	15	30°	1	0,22
CA 4V	32	220	90	42	64	7	80	15	-	2	0,22
CA 4K	32	260	160	42	64	7	80	15	-	2	0,32
CA 5	40	260	110	48	85	7	100	15	45°	1	0,43
CA 5V	40	260	110	48	75	7	100	15	-	2	0,43
CA 5K	40	300	180	48	75	7	100	15	-	2	0,55
CA 6	50	320	135	60	85	7	126	15	45°	1	0,73
CA 6V	50	320	135	60	85	7	126	15	-	2	0,73
CA 8	80	380	185	88.5	120	7	180	15	-	3	1,60
CA 9	100	400	235	113.9	150	9	220	20	-	3	3,14
CA 10	125	450	300	140	210	18	280	20	-	3	5,88



CK Manifold - Anschlussbogen CK - Adaptateur CK



Mod	DN	A	B	øC	øD	E	E1	F	4xG	4xG1	I	I1	I2	I3	I4	Weight Gewicht Poids[kg]
CK 4	32	69	84,6	-	38	11,5	7,0	56	M6	7	-	14,5	14,5	70,2	70,2	0,36
CK 5	40	80	100	-	43	11,5	7,0	56	M6	7	-	17,6	17,6	85	85	0,50
CK 6	50	92	118	-	55	13,0	8,5	69	M8	9	-	18,3	23,8	99,4	104	0,70
CK 8	80	-	-	145	75	10,5	10,5	110	M8	9	130	-	-	-	-	1,37
CK 9	100	-	-	165	90	10,5	10,5	132	M8	9	150	-	-	-	-	1,77
CK 10	125	-	-	220	128	10,5	10,5	192	M8	9	190	-	-	-	-	3,82



AIR END COMPRESSOR AS PART OF PACKAGE - IE2

Hose flange for blower SCL K - PK - *Schlauchflansch für SCL K - PK* - Bride de raccordement pour SCL K - PK



Mod	DN	øD	H	I	L	R	S	Fig	Weight Gewicht Poids [g]
PK 5	40	48	30	92	20	6,5	10	1	90
PK 6	50	60	50	110	35	8,5	10	1	270
PK 6A	50	60	60	130	35	9	11	2	335
PK 8	80	88	43	130	24	9	11	2	300
PK 9	100	113	46	150	27	9	11	2	385

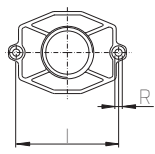
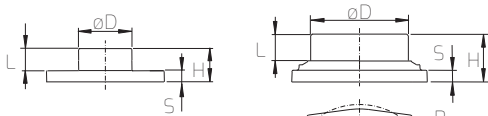


Fig. 1

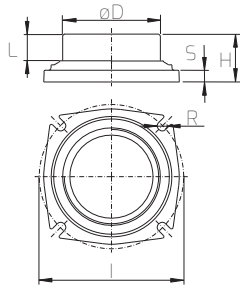


Fig. 2

Hose sleeve - *Schlauchstutzen* - Bride pour manchette souple



Mod	DN	øD	G	H	I	L	M	R	S	Fig	Weight Gewicht Poids [g]
MP 1	15	21	G 1/2"	100	-	85	-	-	-	4	0,10
MP 2	20	27	G 3/4"	100	-	85	-	-	-	4	0,12
MP 3	25	32	-	35	54,5	25	-	6,5	-	1	0,06
MP 4	32	42	-	35	75	25	-	6,5	-	1	0,07
MP 4V	32	42	-	35	64	25	-	6,5	-	1	0,07
MP 5	40	48	-	35	85	25	-	6,5	-	1	0,10
MP 5V	40	48	-	35	75	25	-	6,5	-	1	0,10
MP 6	50	60	-	35	85	25	-	6,5	-	1	0,12
MP 8	80	88	-	45	120	32	-	6,5	-	2	0,24
MP 9	100	114	G 4"	100	-	80	-	-	-	4	0,88
MP 10	125	140	-	62	210	52	-	17	-	2	2,40
MP 10G	125	-	G 5"	62	210	-	35	17	10	3	2,40
MP 10N	125	-	5"NPT	62	210	-	35	17	10	3	2,40

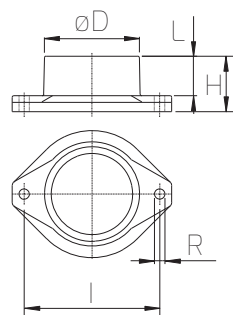


Fig.1

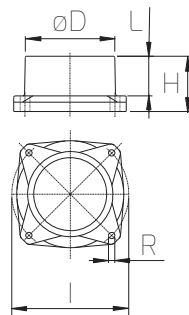


Fig.2

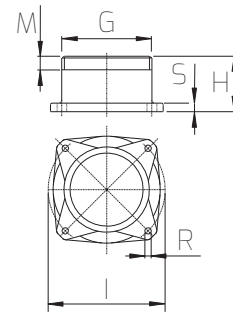


Fig.3

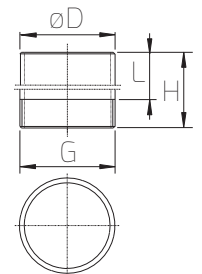
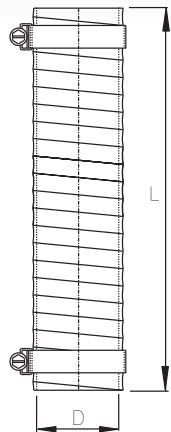


Fig.4

AIR END COMPRESSOR AS PART OF PACKAGE - IE2

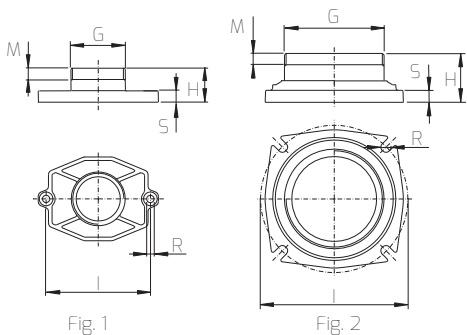
Flexible hose - Flexible Verbindung - Manchette souple



Mod	DN	D	L
FM 1	15	22	200
FM 2	20	30	200
FM 3	25	32	200
FM 4	32	45	200
FM 4C	32	45	110
FM 5	40	51	250
FM 5C	40	51	130
FM 6	50	64	250
FM 6C	50	64	135
FM 8	80	90	330
FM 9	100	114	330
FM 10	125	140	330

Mod	Min. radius of curvature <i>Min. Krümmungsradius</i> Rayon de courbure minimum [mm]	Max pressure <i>Druck max</i> Pression max [bar]	Max negative pressure <i>Unterdruck max</i> Dépression max [mbar]	Weight <i>Gewicht</i> Poids [g]
FM 1	15	2,8	650	60
FM 2	15	2,8	650	65
FM 3	16	2,6	650	90
FM 4	21	2,6	560	135
FM 4C	21	2,6	560	85
FM 5	24	2,6	520	180
FM 5C	24	2,6	520	100
FM 6	31	2,4	480	200
FM 6C	31	2,4	480	120
FM 8	44	2,0	400	250
FM 9	57	1,6	290	370
FM 10	70	1,3	190	400

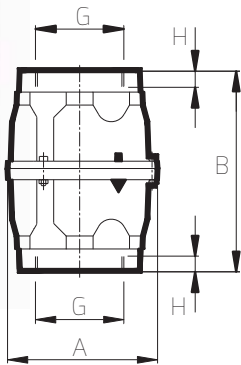
Flange connector for VRL valves and flanged hose connector - Montageflansch für VRL-Ventile und Schlauchanschluss Bride porte-soupape et manchette souple



Mod	DN	G	H	I	M	R	S	Fig	Weight <i>Gewicht</i> Poids [g]
VK 5G	40	G 2"	47	92	17	6.5	10	1	310
VK 6G	50	G 2"	50	110	17	8.5	10	1	265
VK 6AG	50	G 2"	60	130	12	9	11	2	345
VK 8G	80	G 3"	43	130	10	9	11	2	290
VK 9G	100	G 4"	46	150	12	9	11	2	360
VK 5N	40	1" 1/2 NPT	30	92	15	6.5	10	1	85
VK 6N	50	2" NPT	50	110	24	8.5	10	1	265
VK 6AN	50	2" NPT	60	130	19	9	11	2	345
VK 8N	80	3" NPT	44	130	20	9	11	2	280
VK 9N	100	4" NPT	46	150	23	9	11	2	345

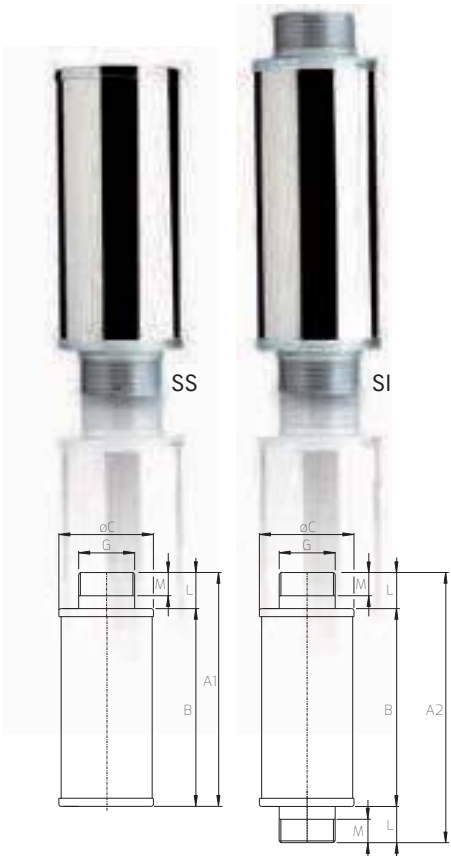
AIR END COMPRESSOR AS PART OF PACKAGE - IE2

Vacuum / pressure relief valve - *Druckbegrenzungsventil Druck / Vakuum* - Soupape de limitation du vide / de la pression



Mod	DN	A	B	G	H	Weight Gewicht Poids[kg]
VRL 6 G	50	102	175	G 2"	12	0.89
VRL 6HP G	50	102	175	G 2"	12	0.89
VRL 8 G	80	135	190	G 3"	15	2.02
VRL 8HP G	80	135	190	G 3"	15	2.02
VRL 9 G	100	160	206	G 4"	18	2.81
VRL 6 N	50	102	175	2" NPT	12	0.89
VRL 6HP N	50	102	175	2" NPT	12	0.89
VRL 8 N	80	135	190	3" NPT	15	2.02
VRL 8HP N	80	135	190	3" NPT	15	2.02
VRL 9 N	100	160	206	4" NPT	18	2.81

Additional silencer - *Zusatzschalldämpfer* - Silencieux supplémentaire

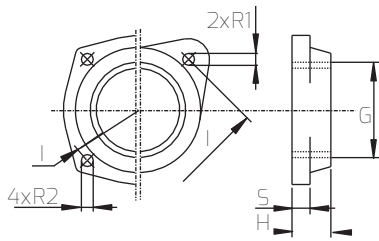


Mod	DN	A2	B	øC	G	L	M	Weight Gewicht Poids[kg]
SI 4	32	240	140	70	G 1" 1/4	50	15	0,57
SI 5	40	230	170	80	G 1" 1/2	30	20	0,55
SI 6	50	260	200	90	G 2"	30	20	0,63
SI 8	80	570	400	152	G 3"	85	20	2,95
SI 9	100	485	430	169	G 4"	27	20	3,90
SI 9 N	100	485	430	169	4" NPT	27	20	3,90

Mod	DN	A1	B	øC	G	L	M	Weight Gewicht Poids[kg]
SS 4	32	190	140	70	G 1" 1/4	50	15	0,38
SS 5	40	200	170	80	G 1" 1/2	30	20	0,44
SS 6	50	230	200	90	G 2"	30	20	0,50
SS 8	80	485	400	152	G 3"	85	20	2,04
SS 9	100	465	430	169	G 4"	27	20	4,10
SS 9 N	100	465	430	169	4" NPT	27	20	4,10

AIR END COMPRESSOR AS PART OF PACKAGE - IE2

Threaded flange TF - Gewindeflansch TF - Bride filetée TF

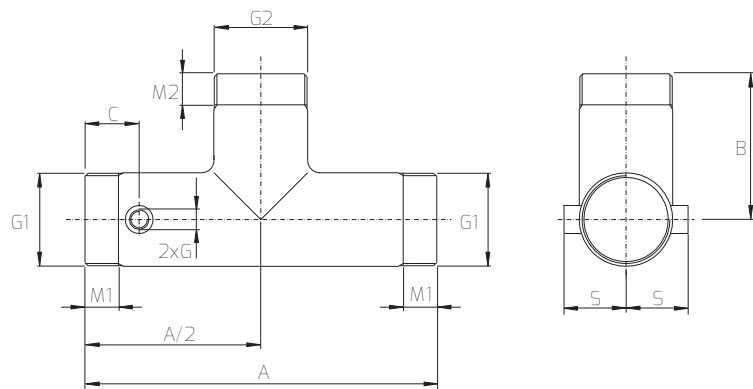


Mod	DN	G	H	I	2xR1	4xR2	S	Weight Gewicht Poids[g]
TF 3 G	25	G 1"	18	54,5	6,5	-	10	47
TF 4 G	32	G 1" 1/4	18	75	6,5	-	10	95
TF 4V G	32	G 1" 1/4	18	64	6,5	-	10	50
TF 5 G	40	G 1" 1/2	18	85	6,5	-	10	130
TF 5V G	40	G 1" 1/2	18	75	6,5	-	10	80
TF 6 G	50	G 2"	18	85	6,5	-	10	100
TF 8 G	80	G 3"	25	120	-	6,5	13	200
TF 9 G	100	G 4"	25	150	-	9	13	285
TF 10 G	125	G 5"	35	210	-	17	13	770
TF 3 N	25	1" NPT	18	54,5	6,5	-	10	47
TF 4 N	32	1" 1/4 NPT	18	75	6,5	-	10	95
TF 4V N	32	1" 1/4 NPT	18	64	6,5	-	10	50
TF 5 N	40	1" 1/2 NPT	18	85	6,5	-	10	130
TF 5V N	40	1" 1/2 NPT	18	75	6,5	-	10	80
TF 6 N	50	2" NPT	18	85	6,5	-	10	100
TF 8 N	80	3" NPT	25	120	-	6,5	13	200
TF 9 N	100	4" NPT	25	150	-	9	13	285
TF 10 N	125	5" NPT	35	210	-	17	13	770

Relief valve / gauge holder - T-Stück für Druckbegrenzungsventil + Manometer - Soupape de limitation

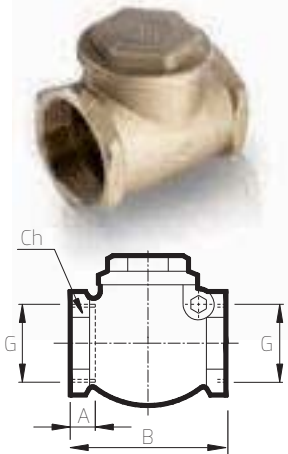


Mod	DN	A	B	C	2xG	G1	G2	M1	M2	S	Weight Gewicht Poids[kg]
PV 56	40	325	95	83	G 1/4"	G 1" 1/2	G 2"	15	21,5	40	1,73
PV 66	50	227	95	35	G 1/4"	G 2"	G 2"	21,5	21,5	40	0,85
PV 86	80	310	135	55	G 1/4"	G 3"	G 2"	28,0	21,5	54	1,85
PV 88	80	310	130	55	G 1/4"	G 3"	G 3"	28,0	28,0	54	1,99
PV 96	100	370	150	65	G 1/4"	G 4"	G 2"	31,5	21,5	67	2,64
PV 98	100	370	173	65	G 1/4"	G 4"	G 3"	31,5	28,0	67	3,00
PV 99	100	370	147	65	G 1/4"	G 4"	G 4"	31,5	31,5	67	2,80
PV 109	125	370	175	65	G 1/4"	G 5"	G 4"	31,5	31,5	80	4,20



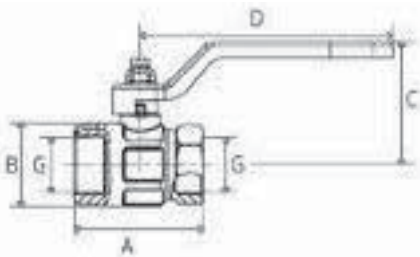
AIR END COMPRESSOR AS PART OF PACKAGE - IE2

Non return valve - Rückschlagventil - Clapet anti retour



Mod	DN	A	B	G	Ch Hex Sechsschlüssel Ch Écrou	Weight Gewicht Poids[kg]
VC 1	15	8	47	G 1/2"	25	0,16
VC 2	20	8	53	G 3/4"	32	0,33
VC 3	25	10	63	G 1"	38	0,38
VC 4	32	10	74	G 1" 1/4	47	0,46
VC 5	40	10	87	G 1" 1/2	55	0,74
VC 6	50	11	97	G 2"	67	1,02
VC 8	80	16	135	G 3"	95	2,44
VC 9	100	20	164	G 4"	124	3,90
VC 10	125	22	206	G 5"	150	6,97

Ball valve - Kugel ventil - Vanne à sphère

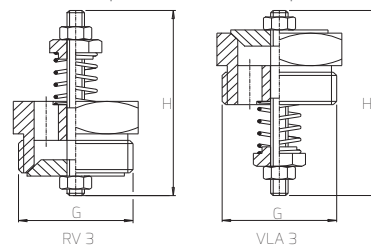


Mod	DN	A	B	C	D	G	Weight Peso [g]
VM 3	25	70	45,5	59	113	G 1"	0,42
VM 4	32	80,5	57	75	138	G 1" 1/4	0,68
VM 5	40	94,5	70	81	138	G 1" 1/2	1,03
VM 6	50	112,5	84	96	157,8	G 2"	1,63

Vacuum / pressure relief valve - Druckbegrenzungsventil Druck / Vakuum - Soupape de limitation du vide / de la pression



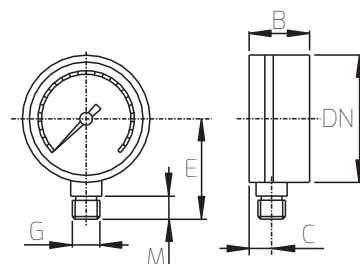
Mod	DN	G	H	Weight Gewicht Poids [g]
RV 3	25	G 1"	57	70
VLA 3	25	G 1"	57	70



Pressure / Vacuum gauge - Manometer Druck / Vakuum - Manomètre / Vacuomètre

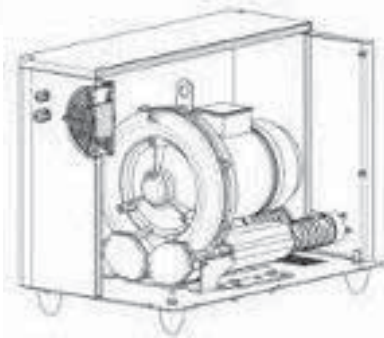


Mod	Δp mbar	Accuracy Genauigkeit Précision	DN	B	C	E	G	M	Weight Gewicht Poids [g]
MC 040	0 ÷ 600	1,6%	63	27	10	54	G 1/4"	13	99
MC 050	0 ÷ 1000	1,6%	63	27	10	54	G 1/4"	13	99
MV 020	-600 ÷ 0	1,6%	63	27	10	54	G 1/4"	13	99

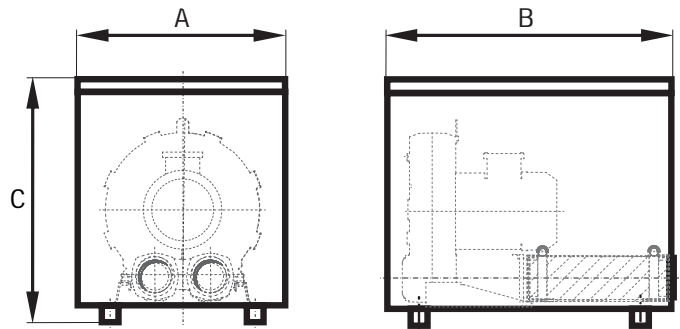


AIR END COMPRESSOR AS PART OF PACKAGE - IE2

Acoustic hood - Schallschutzhaube - Caisson d'insonorisation



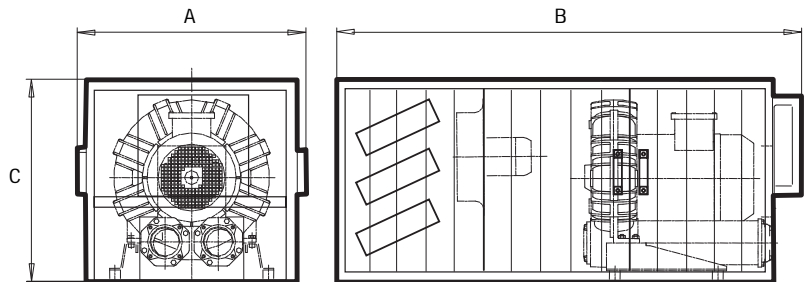
Mod	A	B	C	X SCL
IH 1	340	462	400	K03-MS MOR
IH 3	363	500	420	K04-MS MOR
IH 4	430	680	540	R20/R30/R40-MD MOR
IH 5	430	680	540	K05/K06-MS MOR



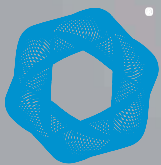
A careful check of the accessories datasheet is appreciated. Ask your sales contact.
 Wir bitten um eine sorgfältige Kontrolle des Zubehör-Datenblattes.
 Wenden Sie sich bitte an Ihren zuständigen Verkaufsleiter.
 Prière de contrôler la fiche technique des accessoires.
 Demander conseil à votre commercial de référence.



Mod	A	B	C	X SCL
IH 7	805	1635	660	K07/K75/K08-MS MOR
IH 7R	805	1635	660	K07R/K08R-MD MOR
IH 8	805	1635	660	K07/K08-TD MOR
IH 9	805	1635	660	K07/K08-TS MOR
IH 10	805	1705	760	K09/K10/K11/K12-MS/MD MOR
IH 11	805	1705	760	K09/K10-TD MOR
IH 12	805	1705	760	K11/K12-TD MOR
IH 13	805	1705	800	K09/K10/K11/K12-TS MOR



A careful check of the accessories datasheet is appreciated. Ask your sales contact.
 Wir bitten um eine sorgfältige Kontrolle des Zubehör-Datenblattes.
 Wenden Sie sich bitte an Ihren zuständigen Verkaufsleiter.
 Prière de contrôler la fiche technique des accessoires.
 Demander conseil à votre commercial de référence.



FPZ
COMPRESSION TECHNOLOGY