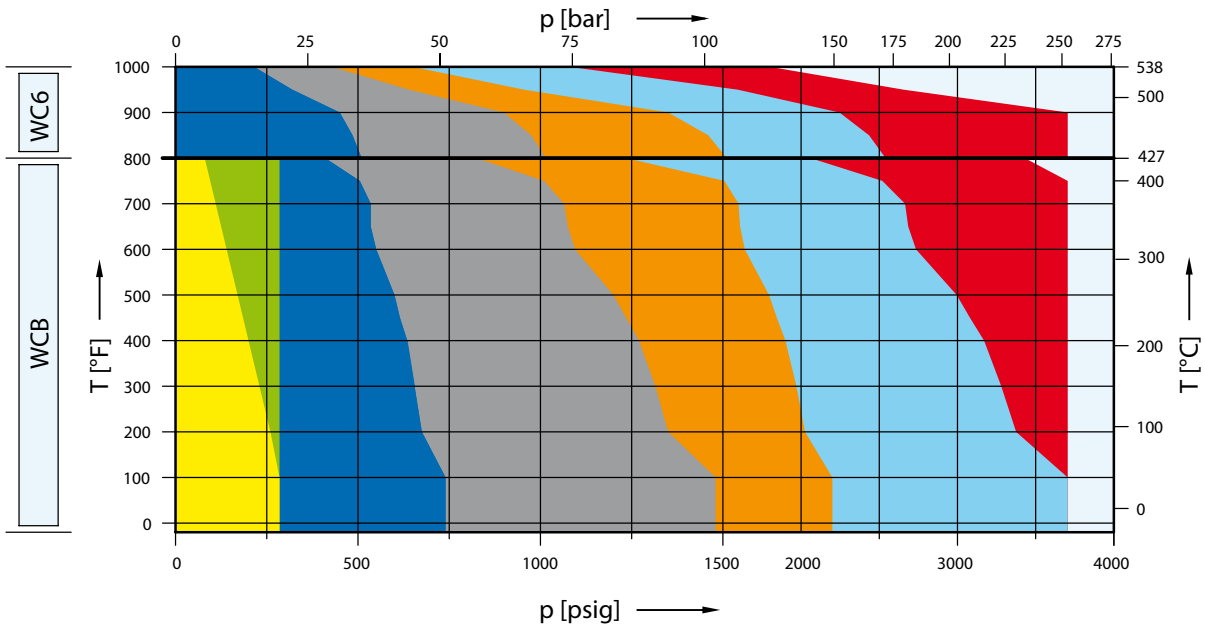
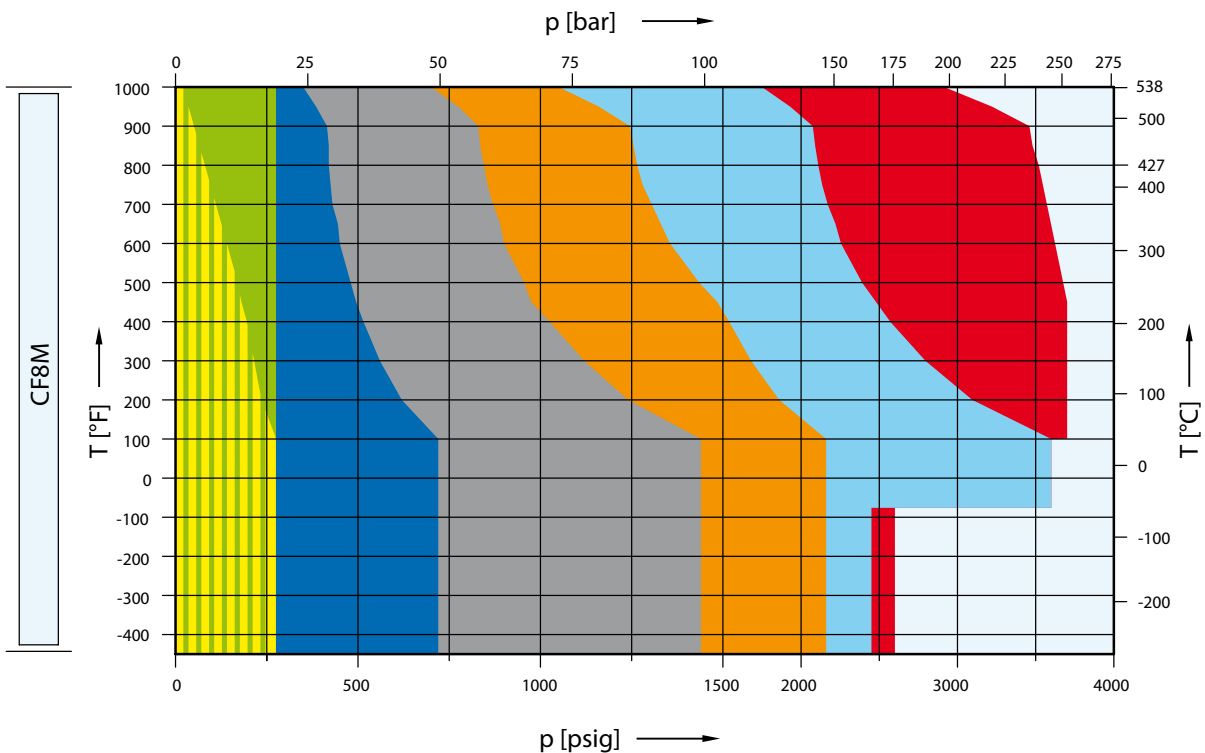


Type 526 Orifice G Selection charts

	150 x 150	300L x 150	300 x 150	600 x 150	900 x 300	1500 x 300	2500 x 300
WCB	5262.045X	5262.046X	5262.047X	5262.048X	5262.049X	5262.050X	5262.051X
WC6	-	-	5267.052X	5267.053X	5267.054X	5267.055X	5267.056X



	150 x 150	300L x 150	300 x 150	600 x 150	900 x 300	1500 x 300	2500 x 300
CF8M	5264.110X	5264.111X	5264.112X	5264.113X	5264.114X	5264.115X	5264.116X



Type 526

Orifice G

Article numbers, dimensions and weights

Article numbers

Valve size	1 1/2 G 3	1 1/2 G 3	1 1/2 G 3	1 1/2 G 3	1 1/2 G 3	2 G 3	2 G 3
Flange rating class <small>Inlet x Outlet</small>	150 x 150	300L x 150	300 x 150	600 x 150	900 x 300	1500 x 300	2500 x 300
Actual Orifice diameter d ₀ [mm]	22.5	22.5	22.5	22.5	22.5	22.5	22.5
Actual Orifice area A ₀ [mm ²]	398	398	398	398	398	398	398
Body material							
WCB 1.0619	Art. No. 5262.045^o	5262.046^o	5262.047^o	5262.048^o	5262.049^o	5262.050^o	5262.051^o
CF8M 1.4408	Art. No. 5264.110^o	5264.111^o	5264.112^o	5264.113^o	5264.114^o	5264.115^o	5264.116^o
WC6 1.7357	Art. No. –	–	5267.052^o	5267.053^o	5267.054^o	5267.055^o	5267.056^o
LCB	Art. No. 5263.516^o	5263.517^o	5263.518^o	5263.519^o	5263.520^o	5263.521^o	5263.522^o

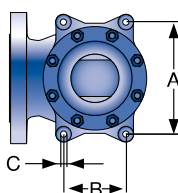
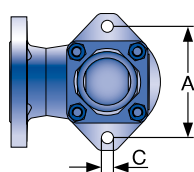
^o Please add code for the required cap or lifting device. See below.

Dimensions and weights

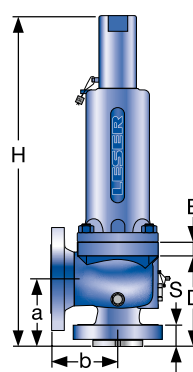
Metric units								
Weight		30.6	30.6	32.5	32.5	36.3	69.9	69.9
[kg]	with bellows	33.1	33.1	35	35	38.6	72.5	72.5
Center to face	Inlet a	124	124	124	124	124	156	156
	Outlet b	121	121	152	152	165	172	172
	s	32	32	35	35	44	68	68
Height (H4)	Standard H max.	536	536	536	536	560	688	688
	Bellows H max.	574	574	574	574	573	705	705
Support brackets	A	162	162	162	162	162	184	184
	B	–	–	–	–	–	110	110
	C	Ø 14	Ø 14	Ø 14	Ø 14	Ø 14	Ø 14	Ø 14
	D	148	148	148	148	174	198	198
	E	16	16	16	16	16	16	16
US units								
Weight		67.5	67.5	71.7	71.7	80	154.1	154.1
[lbs]	with bellows	73	73	77.2	77.2	85	159.9	159.9
Center to face	Inlet a	4 7/8	4 7/8	4 7/8	4 7/8	4 7/8	6 1/8	6 1/8
	Outlet b	4 3/4	4 3/4	6	6	6 1/2	6 3/4	6 3/4
	s	1 1/4	1 1/4	1 13/32	1 13/32	1 3/4	2 11/16	2 11/16
Height (H4)	Standard H max.	21 3/32	21 3/32	21 3/32	21 3/32	22 1/16	27 3/32	27 3/32
	Bellows H max.	22 19/32	22 19/32	22 19/32	22 19/32	22 9/16	27 3/4	27 3/4
Support brackets	A	6 3/8	6 3/8	6 3/8	6 3/8	6 3/8	7 1/4	7 1/4
	B	–	–	–	–	–	4 11/32	4 11/32
	C	Ø 9/16	Ø 9/16	Ø 9/16	Ø 9/16	Ø 9/16	Ø 9/16	Ø 9/16
	D	5 27/32	5 27/32	5 27/32	5 27/32	6 27/32	7 13/16	7 13/16
	E	5/8	5/8	5/8	5/8	5/8	5/8	5/8

^o Code for lifting device

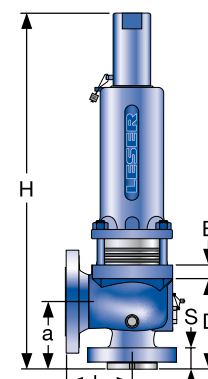
Lifting device	H2	H3	H4	H3
Bonnet	closed	closed	closed	open
WCB 1.0619, WC6 1.7357, LCB	2	3	4	5
CF8M 1.4408	2	–	4	–



Support brackets



Conventional design



Balanced bellows design

Type 526

Orifice G

Pressure temperature ratings

Metric units

Valve size	1 1/2 G 3	1 1/2 G 3	1 1/2 G 3	1 1/2 G 3	1 1/2 G 3	2 G 3	2 G 3
Flange rating class <small>Inlet x Outlet</small>	150 x 150	300L x 150	300 x 150	600 x 150	900 x 300	1500 x 300	2500 x 300
Actual Orifice diameter d_0 [mm]	22.5	22.5	22.5	22.5	22.5	22.5	22.5
Actual Orifice area A_0 [mm ²]	398	398	398	398	398	398	398
Minimum set pressure [bar] S/G/L	0.2 ¹⁾	0.2 ¹⁾	0.2 ¹⁾	0.2 ¹⁾	0.2 ¹⁾	5.0	5.0
Minimum set pressure [bar] S/G	3.4	3.4	3.4	9.2	9.2	9.2	9.2
Balanced bellows Inconel [bar] L	3.2	3.2	3.2	18.5	18.5	18.5	18.5
Body material: WCB 1.0619							
Pressure range p [bar] S/G/L							
Article numbers	5262.045^o	5262.046^o	5262.047^o	5262.048^o	5262.049^o	5262.050^o	5262.051^o
Maximum set pressure	-29 to 38 °C	19.7	19.7	51.0	102.1	153.1	255.5
	232 °C	12.8	19.7	42.4	85.2	127.2	255.5
	427 °C	5.5	19.7	28.3	56.9	85.2	236.6
Outlet pressure limit Conventional design	19.7	19.7	19.7	19.7	51.0	51.0	51.0
Outlet pressure limit Balanced bellows design	15.9	15.9	15.9	15.9	32.4	32.4	32.4
Body material: CF8M 1.4408							
Pressure range p [bar] S/G/L							
Article numbers	5264.110^o	5264.111^o	5264.112^o	5264.113^o	5264.114^o	5264.115^o	5264.116^o
Maximum set pressure	-268 to -60 °C	19.0	19.0	49.7	99.3	149.0	179.3
	-59 to -29 °C	19.0	19.0	49.7	99.3	149.0	255.5
	-28 to 38 °C	19.0	19.0	49.7	99.3	149.0	255.5
	232 °C	12.4	19.0	34.1	67.2	102.4	255.5
	427 °C	5.5	19.0	29.0	58.3	87.2	242.8
538 °C	1.4	19.0	24.1	48.3	72.4	201.0	
Outlet pressure limit Conventional design	19.0	19.0	19.0	19.0	49.7	49.7	49.7
Outlet pressure limit Balanced bellows design	15.9	15.9	15.9	15.9	32.4	32.4	32.4
Body material: WC6 1.7357							
Pressure range p [bar] S/G/L							
Article numbers	-	-	5267.052^o	5267.053^o	5267.054^o	5267.055^o	5267.056^o
Maximum set pressure	427 °C	-	35.2	70.0	105.2	175.2	255.5
	538 °C	-	14.8	29.7	44.8	74.5	124.1
Outlet pressure limit Conventional design	-	-	19.7	19.7	51.0	51.0	51.0
Outlet pressure limit Balanced bellows design	-	-	15.9	15.9	32.4	32.4	32.4
Body material: LCB							
Pressure range p [bar] S/G/L							
Article numbers	5263.516^o	5263.517^o	5263.518^o	5263.519^o	5263.520^o	5263.521^o	5263.522^o
Maximum set pressure	-46 to 38 °C	18.4	18.4	48.0	96.0	144.1	255.5
	200 °C	13.8	18.4	42.5	85.1	127.6	255.5
	343 °C	8.4	18.4	36.4	72.8	109.2	255.5
Outlet pressure limit Conventional design	18.4	18.4	18.4	18.4	48.0	48.0	48.0
Outlet pressure limit Balanced bellows design	15.9	15.9	15.9	15.9	32.4	32.4	32.4

^o) Please add code for the required cap or lifting device. See page 13.

Remark: SA 352 Gr. LCB is not listed in the API 526. Pressure-Temperature Rating acc. to ASME B16.34 Table 2-1.3

The stated Pressure-Temperature Rating are taken from ASME B16.34 Table 2-1.3 if the maximum pressure is not limited by API 526.

Due to the extended material test certificate the LESER LCB can be applied as LCC, WCB, WCC and 1.0619 with the respective pressure-temperature range as well.

¹⁾ The pressure range 0.2 – 2.5 bar is outside of the type test approval acc. to ISO 4126-1 and AD 2000-Merkblatt A2 (CE).

Type 526

Orifice G

Pressure temperature ratings

US units

Valve size	1 1/2 G 3	1 1/2 G 3	1 1/2 G 3	1 1/2 G 3	1 1/2 G 3	2 G 3	2 G 3
Flange rating class <small>Inlet x Outlet</small>	150 x 150	300L x 150	300 x 150	600 x 150	900 x 300	1500 x 300	2500 x 300
Actual Orifice diameter d_0 [inch]	0.886	0.886	0.886	0.886	0.886	0.886	0.886
Actual Orifice area A_0 [inch ²]	0.616	0.616	0.616	0.616	0.616	0.616	0.616
Minimum set pressure [psig] S/G/L	3.0 ¹⁾	3.0 ¹⁾	3.0 ¹⁾	3.0 ¹⁾	3.0 ¹⁾	73.0	73.0
Minimum set pressure [psig] S/G	46.6	46.6	46.6	133.4	133.4	133.4	133.4
Balanced bellows Inconel [psig] L	46.4	46.4	46.4	268.0	268.0	268.0	268.0
Body material: WCB 1.0619							
Pressure range p [psig] S/G/L							
Article numbers	5262.045^{o)}	5262.046^{o)}	5262.047^{o)}	5262.048^{o)}	5262.049^{o)}	5262.050^{o)}	5262.051^{o)}
Maximum set pressure	-20 to 100 °F	285	285	740	1480	2220	3705
	450 °F	185	285	615	1235	1845	3705
	800 °F	80	285	410	825	1235	3430
Outlet pressure limit Conventional design	285	285	285	285	740	740	740
Outlet pressure limit Balanced bellows design	230	230	230	230	470	470	470
Body material: CF8M 1.4408							
Pressure range p [psig] S/G/L							
Article numbers	5264.110^{o)}	5264.111^{o)}	5264.112^{o)}	5264.113^{o)}	5264.114^{o)}	5264.115^{o)}	5264.116^{o)}
Maximum set pressure	-450 to -76 °F	275	275	720	1440	2160	2450
	-75 to -21 °F	275	275	720	1440	2160	3600
	-20 to 100 °F	275	275	720	1440	2160	3705
	450 °F	180	275	495	975	1485	3705
	800 °F	80	275	420	845	1265	3520
	1000 °F	20	275	350	700	1050	2915
Outlet pressure limit Conventional design	275	275	275	275	720	720	720
Outlet pressure limit Balanced bellows design	230	230	230	230	470	470	470
Body material: WC6 1.7357							
Pressure range p [psig] S/G/L							
Article numbers	-	-	5267.052^{o)}	5267.053^{o)}	5267.054^{o)}	5267.055^{o)}	5267.056^{o)}
Maximum set pressure	800 °F	-	510	1015	1525	2540	3705
	1000 °F	-	215	430	650	1080	1800
Outlet pressure limit Conventional design	-	-	285	285	740	740	740
Outlet pressure limit Balanced bellows design	-	-	230	230	470	470	470
Body material: LCB							
Pressure range p [psig] S/G/L							
Article numbers	5263.516^{o)}	5263.517^{o)}	5263.518^{o)}	5263.519^{o)}	5263.520^{o)}	5263.521^{o)}	5263.522^{o)}
Maximum set pressure	-50 to 100 °F	265	265	695	1395	2090	3480
	400 °F	200	265	615	1230	1845	3705
	650 °F	125	265	535	1065	1600	3705
Outlet pressure limit Conventional design	265	265	265	265	695	695	695
Outlet pressure limit Balanced bellows design	230	230	230	230	470	470	470

^{o)} Please add code for the required cap or lifting device. See page 13.

Remark: SA 352 Gr. LCB is not listed in the API 526. Pressure-Temperature Rating acc. to ASME B16.34 Table 2-1.3
The stated Pressure-Temperature Rating are taken from ASME B16.34 Table 2-1.3 if the maximum pressure is not limited by API 526.

Due to the extended material test certificate the LESER LCB can be applied as LCC, WCB, WCC and 1.0619 with the respective pressure-temperature range as well.

¹⁾ The pressure range 3.0 – 36.25 psig is outside of the type test approval acc. to ISO 4126-1 and AD 2000-Merkblatt A2 (CE).