

Date : 07.02.2023
Ref. : KT23016-1
Customer : Mayr-Melnhof Print & Packaging Tehran
Tel :
Subject : Offer for ADA COLOR Ruby Solvent based dispensing system

ada color *Scarlet* SB-24

Solvent Based Dispensing System



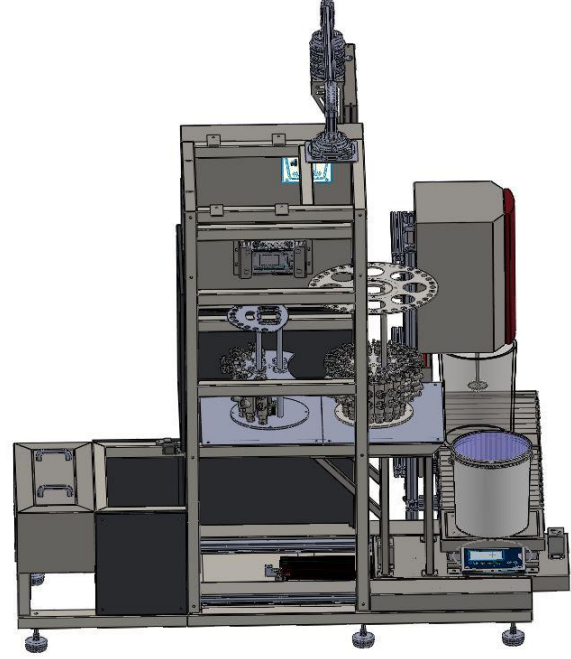
- 24 components
- 2 stage stainless steel dispensing valves (DN15)
- Automatic valve cleaning system
- Stainless steel modular frame
- ½" ARO Aluminum double diaphragm (PTFE) air pumps with pulsation dampers
- 30kg ± 1g ex-proof electronic scale (Mettler Toledo)
- Control Panel and PC in the safe room
- Windows 10 PC (Dell)
- Windows 10 Color software (English, Turkish)
- Additional manual control buttons on the control panel
- 24 pcs. 200lt barrel connection kits

Dispense Console

Fully automatic compact dispenser designed to dispense into pails (up to 30kg) with an accuracy of ± 1 gram. Dispensing system is controlled directly by a PLC controller linked to the Host PC which will contain all Material & Formulation data. Full recirculation of product and automatic valve cleaning system ensures the system is dispensing to its optimum at all times.

Dispense Valves

DN15 full recirculation 2 stage dispense valves will be located above the scale with 18 + 6 two sets. The scale moves under the desired valve set automatically. 15mm nozzle sizes ensure a fast, accurate and repeatable dispense. Stainless steel dispensing valves are accurate to within ± 1 gram. The diameter of 18 valves ring is 225mm, so the inner diameter of finished ink pail must be bigger than 250mm and the height should be less than 450mm.



Automatic Valve Cleaning System

After dispensing, all valves are automatically washed with cleaning solvent and dried. In this way, unwanted contamination to the next product is prevented and the valves are always kept clean. The cleaning solvent placed in the washing tank is sent to the nozzle of the dispensing valves with a separate pump. The cleaning solvent is collected in a tray and returns to the tank. After washing cycle, nozzles are dried by pressurized air. Washing and drying times can be adjusted from the software.

Scale

30kg x 1gram Ex-proof Mettler Toledo electronic scale and power supply. Pneumatically operated automatic sliding stainless steel load plate and Indicator.

Control System

Main PC and control system are placed in a safe room. System can be operated from the main PC in the safe room. An electro/pneumatic control system is located in the control console. 220 VAC 10 amp supply is required to be connected during the installation.



Manual Control Backup

A Manual Control Backup system will be supplied as standard. In case of PC failure, operators will be able to dispense ink through the manual control buttons located on the control panel in the safe area. This controls the full & fine & dripping flow stages of the valve & pump.

PC

Main PC : Windows® 10 PC with at least Intel i3 processor, 4G Ram, 500GB Hard Drive, 32x CD Rom, 21" Color Monitor, Keyboard & Mouse.

Pump Frame

Stainless steel Pump Frame will be supplied to house all pumps and hoses. It's modular construction enables easy installation and repositioning of the system if required.

Pumps

½" ARO Aluminum double diaphragm air pumps fitted with PTFE diaphragms will be supplied for dispensing and recirculation of product.

Pulsation Dampners

All pumps are equipped with stainless steel pulsation dampners for a smooth flow of products.

Fluid Hoses

¾" and 1" solvent hoses will be supplied for delivery and return of product. 1" stainless steel pipes will be supplied for suction of product from the barrels.

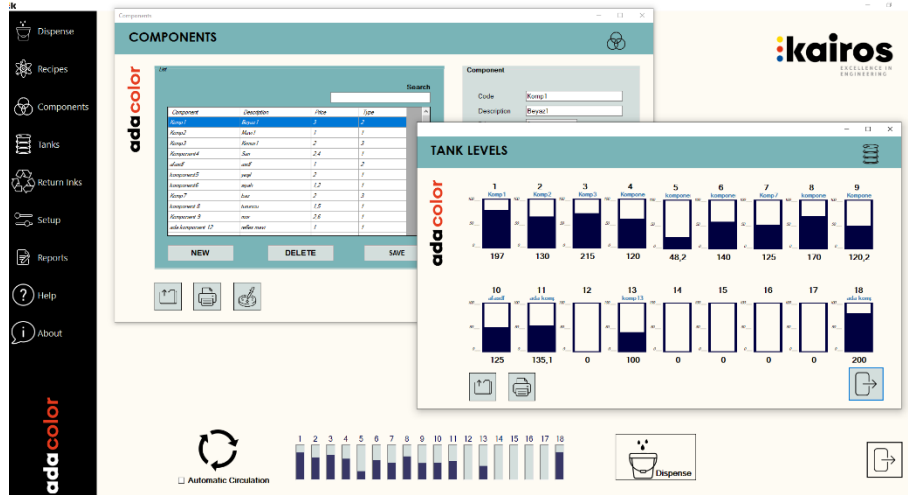
ADASoft Dispensing Software

Windows-based dispensing software has functions to meet all the needs of users, and is designed to be learned quickly and used practically. Basic computer knowledge is sufficient to use the software.

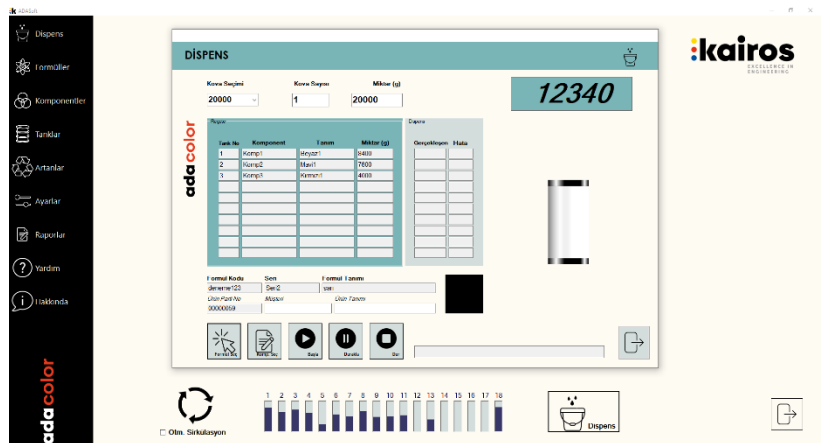
All parameter settings of the dispensing system can be done with the ADASoft software. User accounts can be set with different authorization levels.



All reports can be exported to MS-Excel for creating user defined reports. It's return inks control allows the reuse of excess inks after printing. This feature, which is included as a standard in the software, searches for suitable return inks that can be used in this production in the surplus warehouse defined on a new pre-production system and creates the new formulation according to the amount to be spent. Return inks usage amount and code can be selected by the operator.



- Raw material and product database
- Formulations database
- Defining users with different authorization levels
- Parameter settings for optimum dispensing
- Raw materials and product reports
- Exporting reports to Ms-Excel
- Calculated raw material levels
- Component dispense and formulation dispense
- Return inks control
- Automatic recirculation control



Options:

1. Label Printer

Zebra ZD220T

Used in combination with the dispensing software

Printing labels with barcode for the finished pails

Thermal and thermal transfer printing

104mm print width



2. Pail Mixer

adamix AK20

- Semi automatic mixer with air motor
- 0.68kw high power ex-proof mixer motor
- Pneumatic up/down movement of mixer
- Stainless steel rod and propeller
- Adjustable mixing speed (0-2000rpm)

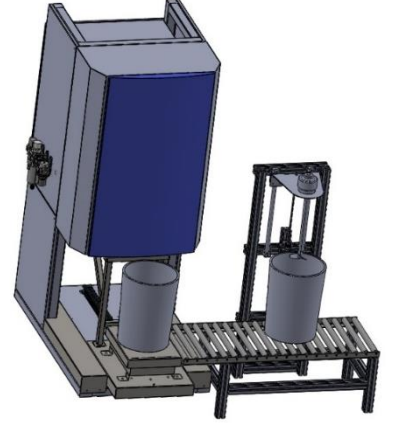


3. Semi-automatic mixer and roller

adamix AK20-S

- Semi-automatic mixer with air motor
- 0.68kw high power ex-proof mixer motor
- Pneumatic up/down movement of mixer
- Stainless steel rod and propeller
- Adjustable mixing speed (0-2000rpm)
- Stainless steel rollers

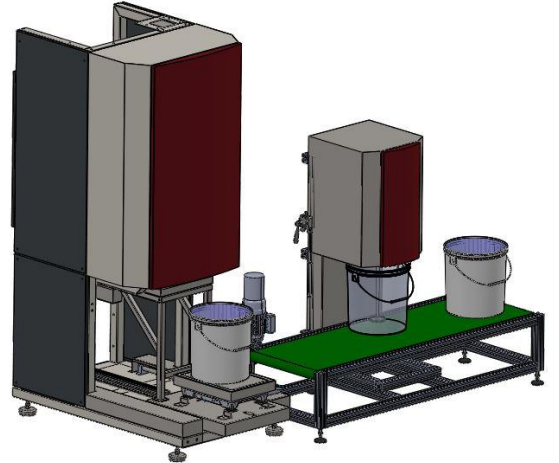
The operator simply slides the dispensed pail under the mixer by the help of rollers.



4. Automatic mixer

adamix AK20-AS

- Automatic mixer with air motor
- 0.68kw high power ex-proof mixer motor
- Automatic self-cleaning
- Auto conveyor (ex-proof)
- Stainless steel rod and propeller
- Adjustable mixing speed (0-2000rpm)
- Adjustable mixing and washing time
- Controlled by the dispensing software



Automatic mixing of dispensed buckets with auto self-cleaning system.

5. Drum mixer

admix AK200

Should be used with high viscosity color pastes for keeping the color paste homogenous and easy to pump.

- 1.3 kw high power ex-proof air motor
- Stainless steel rod and propeller
- Adjustable mixing speed (0-2000rpm)
- Double propeller
- Mounted on the lid of drums



6. Spare Parts Kit

- DN15 dispensing valve
- ½" diaphragm pump
- Valve repair kit



7. IBC Mixers

admix AK1000

- 1.25kW ex-proof air motor with gear reducer
- Stainless steel foldable mixing blades
- Lightweight and easy to place on the IBC



8. Grounding Controller

- Atex Zone 1, Ex-d enclosure
- Prevents dispensing from starting in the event of a ground fault



9. Mixer control unit

- Automatic control unit for 15 IBC and drum mixers
- Touch screen control unit with PLC and HMI to be installed in the safe room on the control panel
- SMC pneumatic systems
- Automatic control with 7" touch panel
- Programming of each mixer separately via the weekly calendar.
- Running multiple mixers at the same time



ADA COLOR Scarlet SB with 24 components	€ <u>86.000,</u>
Label Printer	€ <u>460,</u>
Automatic Mixer	€ <u>12.500,</u>
Spare Parts Kit	€ <u>1.550,</u>
Total	€ <u>100.510,</u>
Discount 5 %	- € <u>5.110,</u>
Total	€ <u>95.400,</u>
Installation and training	€ <u>3.500,</u>
Grand TOTAL	€ <u>98.900,</u>

Payment : %50 with order
%50 prior to delivery

Transport : EX-Works İzmir
Delivery : 12-14 weeks
Validity : 30 days
Warranty : 1 year

Exclusions :
International transport
Pressurized air supply
Electric supply
Internet connection to the PC
Suitable working place and safe room for the control panel

Approval

Sign	Sign
------	------