

■ 混合料制备 Raw Material Mixing

原料主要包括粒状棉、淀粉等，各种原料和添加剂经输送、混合、搅拌，形成一定浓度的料浆，料浆泵入高位罐，以溢流的形式送料上网。

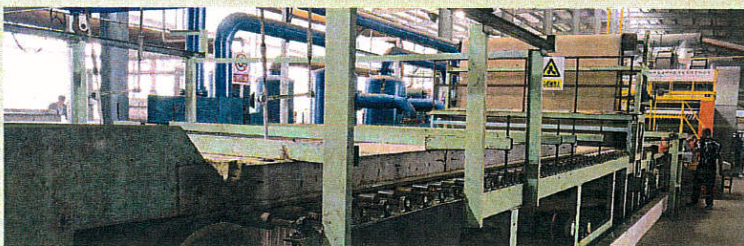


Raw material includes granulated fiber, starch and so on, all the material and additive will form the slurry with certain concentration by conveying, mixing and stirring. The slurry will be pumped into high level tank and fed to net in the shape of overflow type.

■ 长网成型机 Fourdrinier

长网成型机由网带、压辊、真空箱和传动机构组成。湿浆料在网带上自然淋水和真空强制脱水，再由压辊碾压脱水，形成一定含水率和厚度的湿板坯带。

Fourdrinier is made up of mesh belt, compression roller, vacuum box and transmission mechanism. After natural dehydrating, vacuum dehydrating and compression dehydrating, wet slurry will form wet slab with a certain moisture content and thickness.



■ 水切装置 Water Cutting Device



湿板坯带由高压水力切割切成一定的长度和宽度，横向切割与长网机成一定角度。按照程序，定尺切割。

Wet slab will be cutted into the board with certain length and width, and the transverse cutting is at a certain angle with the long net machine. According to procedure, length cutting.



加速输送机装置 Accelerating Conveyor Device

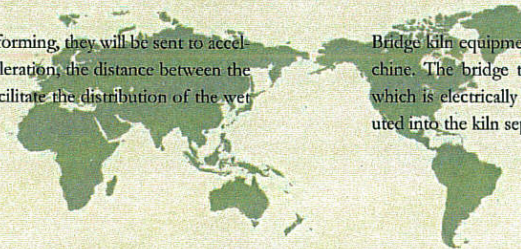


分配桥装置 Distributive Bridge



一定宽度、长度的含水原板成型后送至加速输送机，通过多级加速，逐渐拉开与下一块湿板间的距离，以利分配湿板入窑动作的实现。

After boards with certain length and width forming, they will be sent to accelerating conveyor. Through multi-stage acceleration, the distance between the wet sheet and next is gradually pulled to facilitate the distribution of the wet sheet into the kiln.



分配桥入窑装置包括桥式分配机和进板机两个主机。桥式分配机为一多段式双层辊道输送机，电动升降，分别控制每层湿板分配进窑。将湿板分别送入进板机的每层辊道。

Bridge kiln equipment includes bridge type distributor and plate feeding machine. The bridge type distributor is a multi-stage double roller conveyor, which is electrically operated and control wet plate of every layer be distributed into the kiln separately. Wet plates are fed into each roller of the feeder.



进板机 Plate Feeding Machine

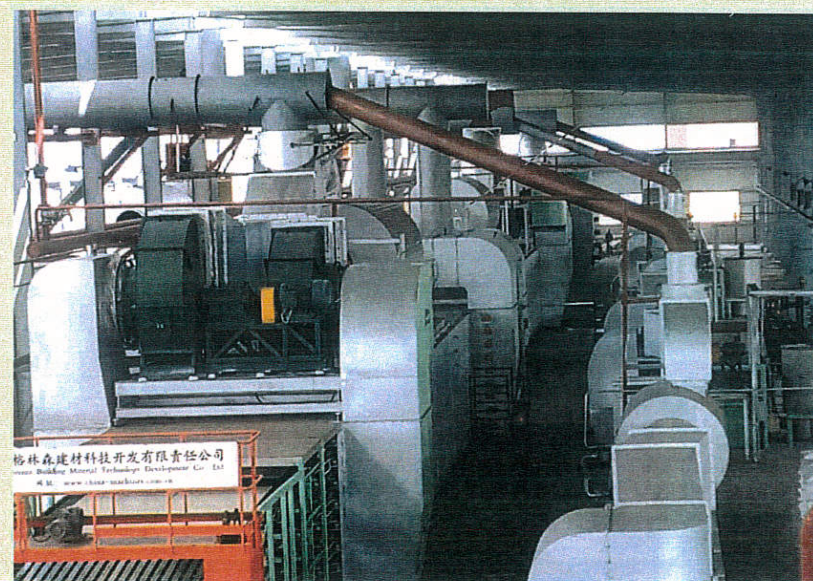


进板机与分配机的辊道以相同的速度接取含水原板，并分别转换成慢速（即窑速），将湿板送入烘干窑进行连续烘干。

The roller table of the feeder and the distributor receive the original plate containing water at the same speed, and are converted into slow speeds (ie, kiln speeds) respectively, and the wet plates are sent to the drying kiln for continuous drying.



干燥窑 Drying Kiln



格林森建材科技开发有限责任公司
Greens Building Material Technology Development Co., Ltd
地址: www.hebeigreen.com.cn

该系统是整个生产线的核心，它直接影响产品的质量与系统能耗，干燥窑内有多种调节及控制机构用来保证各部温度及气流均匀，使产品矿棉板烘干质量均匀、一致，并减少能耗。

This system is the core of the whole production line, which effect directly the quality of products and energy consumption system. There are various adjustment and control mechanism in drying kiln to ensure uniform temperature and airflow in every part, which will ensure drying quality and low consumption.

