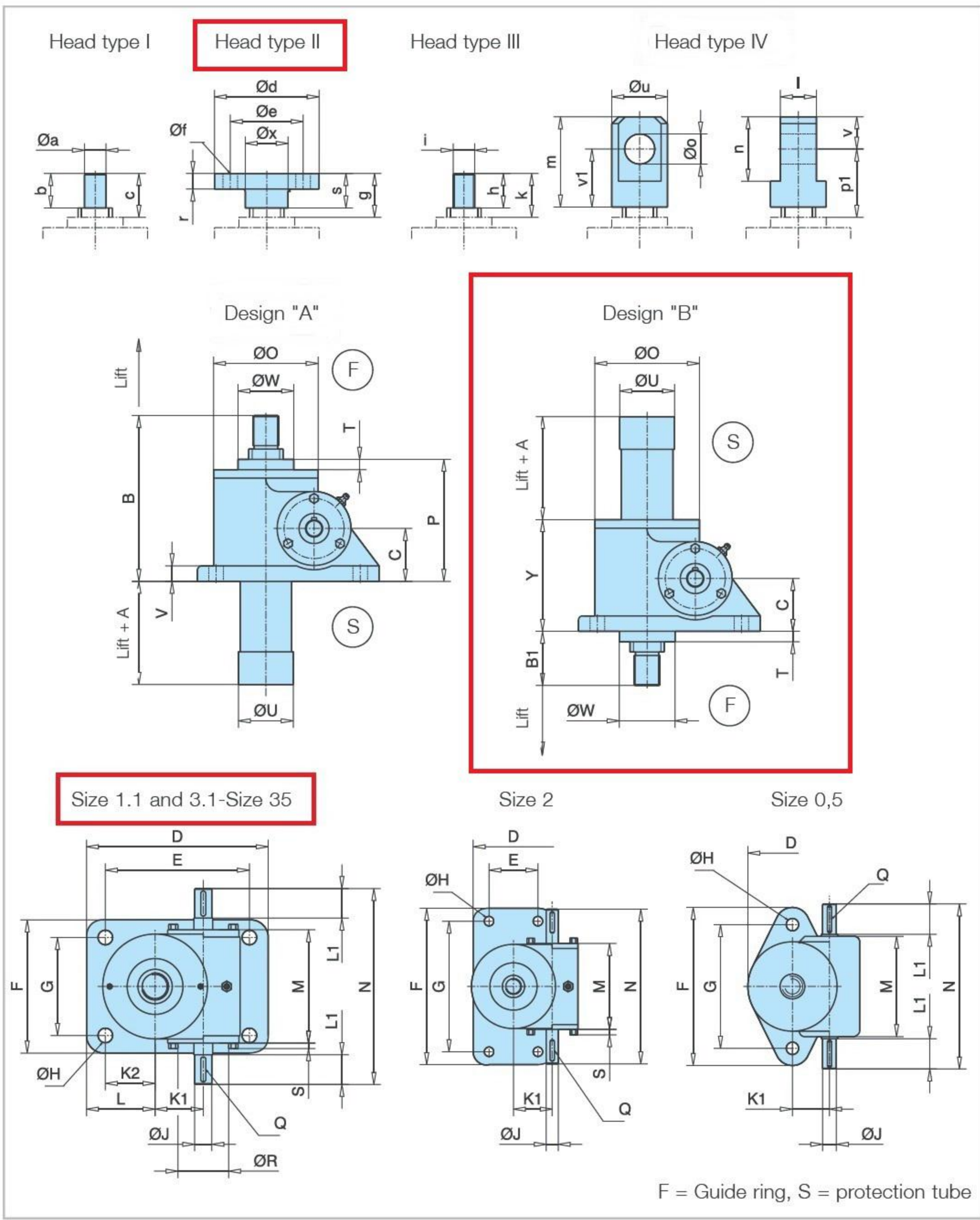


dimension plans

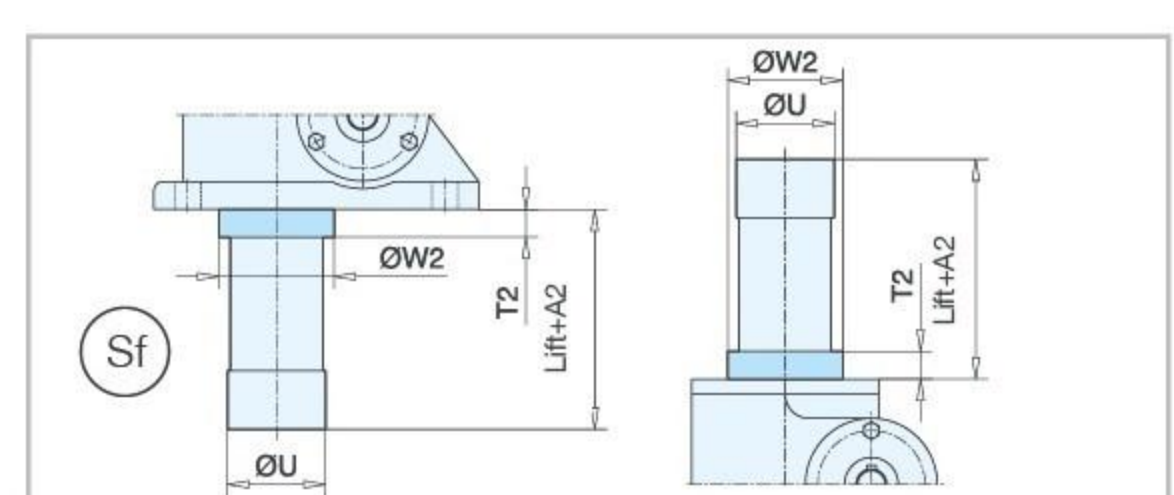
type 1



Size	0,5	1.1	2	3.1	5.1	15.1	20.1	25	35
Screw	Tr 18x6	Tr 24x6	Tr 26x6,28	Tr 30x6	Tr 40x7	Tr 60x12	Tr 70x12	Tr 90x16	Tr 100x16
A	20	20	20	20	20	20	20	20	20
B	106,5	124	147,5	150,5	193	230	256	317	350
B1	35,5	54	54,5	53,5	63	80	80	100	110
C	32	35	44	45	61,5	70	87	102	115
D	81,5	150	94	165	212	235	295	350	430
E	-	130	57	135	168	190	240	280	360
F	115	100	182	120	155	200	215	260	280
G	90	80	162	90	114	155	160	190	210
Ø H	9	9	11	14	17	21	28	35	35
Ø J k6	10	14	14	16	20	25	28	34	38
K 1	27	36	45,2	45,2	56,2	66,8	72,5	97	120
K 2	-	58	28,5	50	58	63,5	95	95	135
L	32,5	68	47	65	80	86	122,5	130	170
L 1	22	18	-	-	-	47	52	60	80
M	73	100	100	110,5	132	185	213,5	221	265
N	120	140	180	190	228	280	322	355	430
Ø O	65	88	98	98	122	150	185	205	260
P	75,5	79	101,5	105,5	142	156	182	225	250
Q	3x3x20	5x5x16	5x5x25	5x5x32	6x6x32	8x7x40	8x7x45	10x8x50	10x8x70
Ø R	-	-	41	38	55	-	72	80	100
S	-	-	6	5,5	6	-	6	10	10
T	5,5	9	8,5	8,5	12	6,5	6	8	10
V	10	13	14	12	18	16	20	25	30
Ø W	36	52 ¹⁾	48	48	65	80	100	130	150
Ø U	29	40	49	49	64	81	88	120	139
Y	70	79	93	97	130	150	176	217	240
Head type I									
Ø a k6	18h9	15	18	20	25	40	50	70	80
b	20	24	30	30	40	50	54	63	80
c	30	45	46	45	51	74	74	92	100
Head type II									
Ø d	65	72	98	98	122	160	185	205	260
Ø e	45	50	75	75	85	105	140	155	200
Ø f	4xø7	4xø9	4xø11	4xø14	4xø17	4xø21	4xø26	4xø27	4xø33
r	8	10	12	12	18	20	20	25	30
s	20	25	30	30	40	50	54	63	80
Ø x	18	30	40	40	50	65	90	100	130
g	30	45	46	45	51	74	74	92	100
Head type III									
h	15	24	30	30	39	50	54	63	80
i	M 18x1,5	M 16x1,5	M 18x1,5	M 22x1,5	M 30x2	M 40x3	M 56x3	M 70x3	M 80x3
k	30	45	46	45	51	74	74	92	100
Head type IV									
l - 0,2	20	25	30	30	42	60	75	90	105
m	50	60	70	70	105	130	150	175	220
n	30	40	50	50	75	100	120	140	160
Ø o H8	15	20	20	25	35	50	60	70	80
p1	50	60	61	60	79	104	110	134	160
ø u	30	40	48	50	65	90	110	130	150
v1	35	40	45	45	67,5	80	90	105	140
v	15	20	25	25	37,5	50	60	70	80

2nd Guide ring Sf

If no guides can be fitted on site and restoring forces produced by swivelling motion or lateral forces cannot be ruled out the SHE unit should be fitted with a 2nd guide ring.



Size	A2	T2	ØW2	ØU	
0,5	32	11,5	36	29	
1.1	32	9	52 ¹⁾	40	
2	44	20	60	49	
3.1	40	20	60	49	
5.1	43	18	75	64	
15.1	42	18	95	81	
20.1	55	31	100	88	
25	65	40	130	120	
35	60	40	150	139	
50.1	Standard design with 2 nd guide ring				143
75					120
100.1					198
150					220
200.1					