

Gear series :

Helical bevel geared motors

Type :

KSS 86C 3C 112M-04E-TH-TF-BR40

Operation data :

Ambient temperature : +40 °C
 Type of operation : S1

Motor data :

Series : WEG Modular System Motor (EUSAS)
 Housing material : Aluminium
 Efficiency class η : IE3-89.1%
 Type : 3CWA
 Motor power : 4 [kW]
 Rated speed : 1450 [rpm]
 Rated torque : 26 [Nm]
 Voltage : 400/690 [V]
 Frequency : 50 [Hz]
 Connection : D/Y
 Rated current : 8.0 / 4.6 [A]
 Starting to rated current : 7.0
 'cos φ ' : 0.81
 Protection class : IP 55
 Mounting position of the terminal box : side 2 cable entry I
 Insulation class : F
 Mass moment of inertia : 18.2×10^{-3} [kgm²]

Further motor executions :

Fan : self ventilated
 Temperature controller : Bimetal switch NCC (TH) and PTC thermistor (TF) for switch off
 Ball bearing : Standard

Brake data :

Type : BR40 [Nm]
 Supply voltage for rectifier : Choice is necessary!
 Rectifier / brake type : Choice is necessary!

Gear data :

Max. perm. thermal power limit at +40 °C and S1 operation : 12 [kW]
 Output speed : 12 [rpm]
 Output torque : 2843 [Nm]
 Service factor : 1.80
 Gear stages : 4
 Ratio : 123.43
 Circumferential backlash (min-max) : 3' - 5'
 Reduced circumferential backlash (min-max) (OPTION) : 3' - 5'
 Perm. input torque at FB1 : 41.2 [Nm]

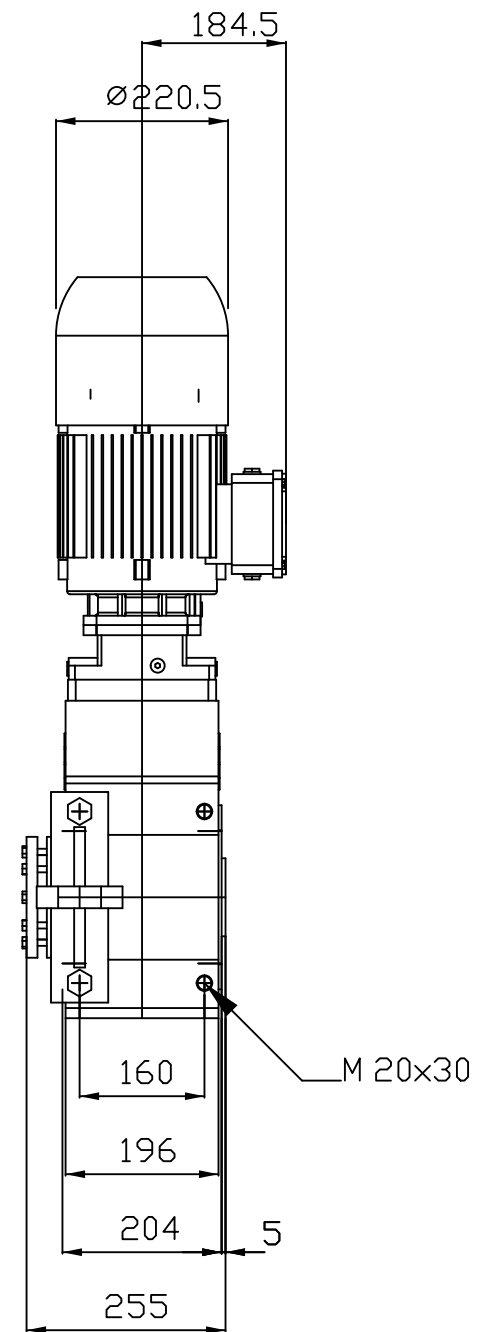
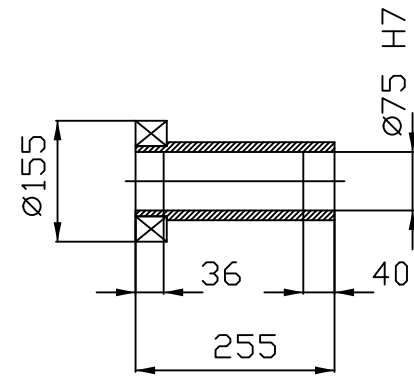
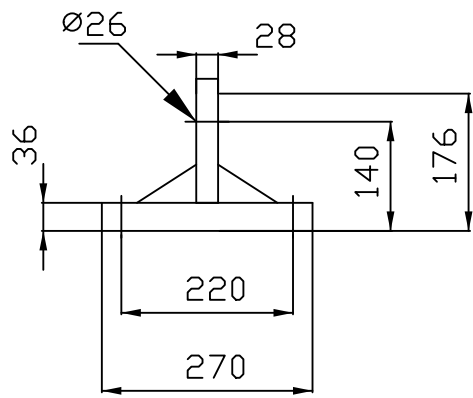
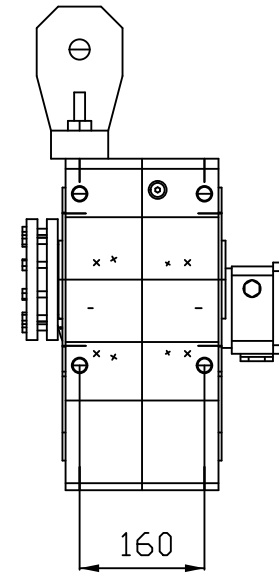
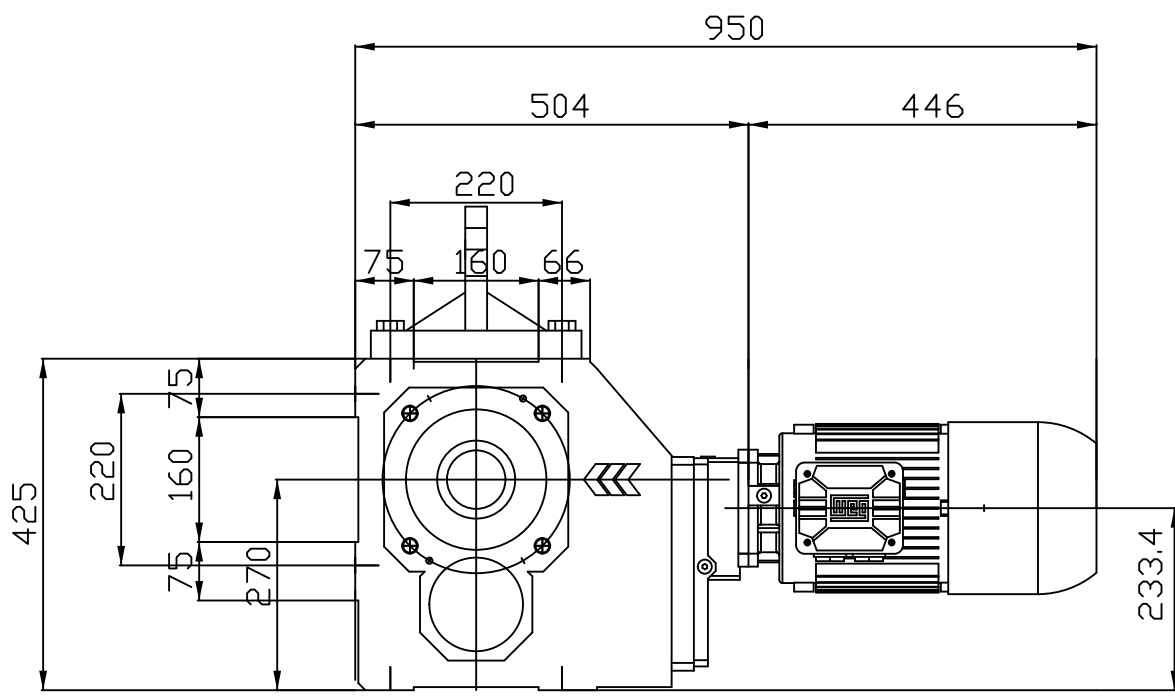
Max. perm. input speed :	2600	[rpm]
Mounting position :	H60	
Hollow shaft and shrink disc :	Ø 75 H7	[mm]
Position of the shrink disc :	on side 1	
Painting :	LC1 - Indoor installation neutral atmosphere NDFT 60 µm (C1 - DIN EN ISO 12944-5)	
Color :	RAL 9007 (Grey aluminium)	
Total weight :	187.6	[kg]

Input side :

Type :	Direct mounting
Input shaft :	Ø 34 k6 x 23,5 mm
Input flange :	square according to IEC Ø200 mm

Further executions gear unit :

Torque arm :	GMDSK85
Fixing of the torque arm :	supplied loose
Lubricant :	Mineral oil - CLP ISO VG 220



Dimension sheet is proportional.
 All dimension in mm.
 Technical data are subject to change.

Dim. sheet no.:
 Date: 1.6.2019
 cat4CAD: 6.1.1915.265

Notes:
 Position: 1
 Type: KSS 86C 3C 112M-04E-TH-TF-BR40

