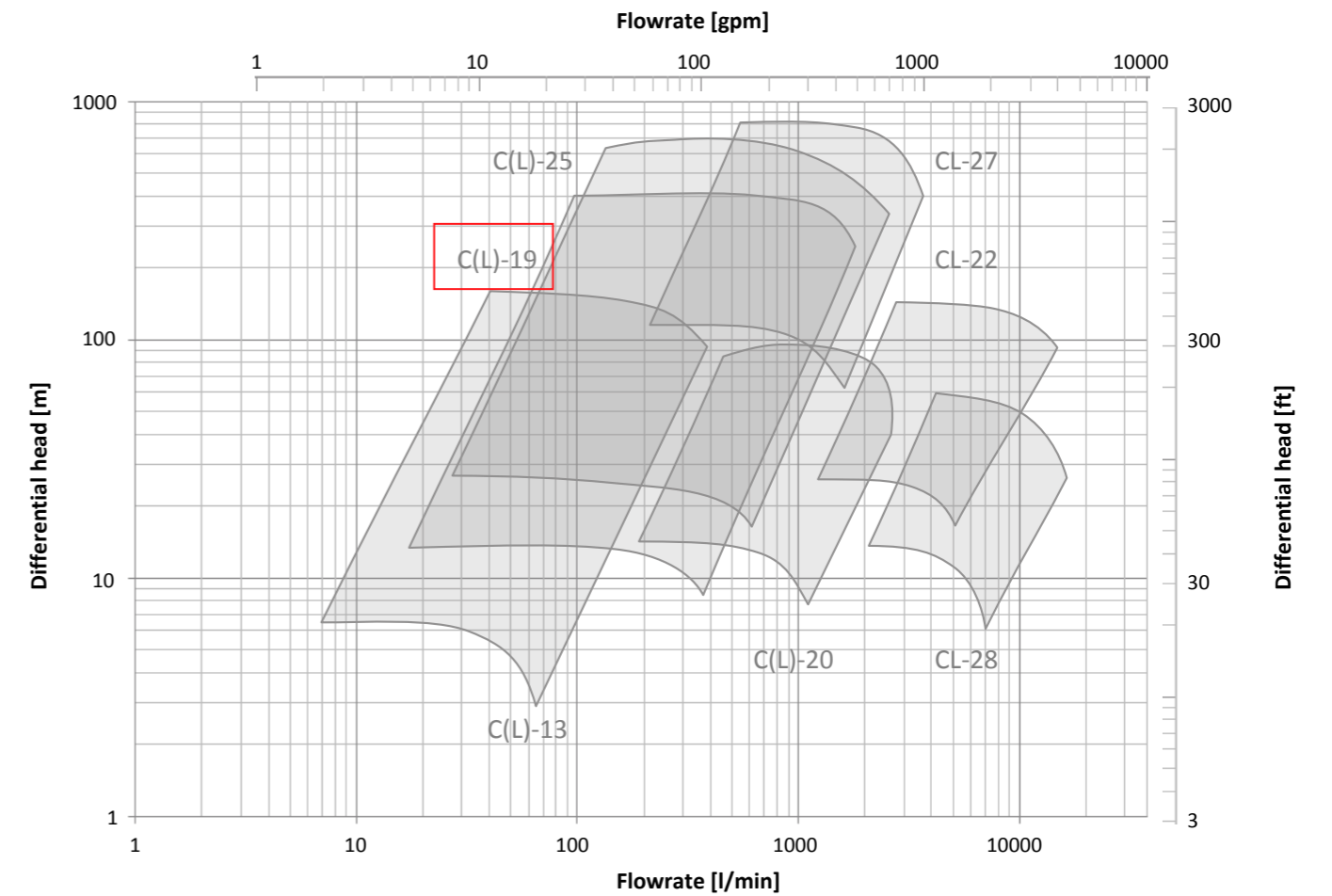


SINGLE STAGE centrifugal pumps

SINGLE STAGE PUMPS

PUMP MODEL	SEAL SYSTEM			LIQUIDS PUMPED		
	GRD	GRS	Labyrinth	LIN/LOX/LAR	LCO ₂	LNG
DISTRIBUTION PUMPS						
C-19 Varan III	✓	✓		✓	✓	
C-19 Varan III+	✓	✓		✓	✓	
C-19 EM-7.5	✓	✓		✓	✓	✓
C-19 Hydran	✓	✓		✓	✓	✓
C-25 Hydran	✓	✓		✓	✓	✓
C-20	✓	✓		✓	✓	✓
SINGLE STAGE PROCESS PUMPS						
C(L)-13	✓	✓	✓	✓	✓	✓
C(L)-19	✓	✓	✓	✓	✓	✓
C(L)-20	✓	✓	✓	✓	✓	✓
CL-22			✓	✓		✓
C(L)-25	✓	✓	✓	✓	✓	✓
C(L)-25HF		✓	✓	✓		✓
CL-27			✓	✓		✓
CL-28			✓	✓		✓



Ⓢ Mechanical seal (GRD)



Ⓢ Gas riding seal (GRS)



Ⓢ Labyrinth seal

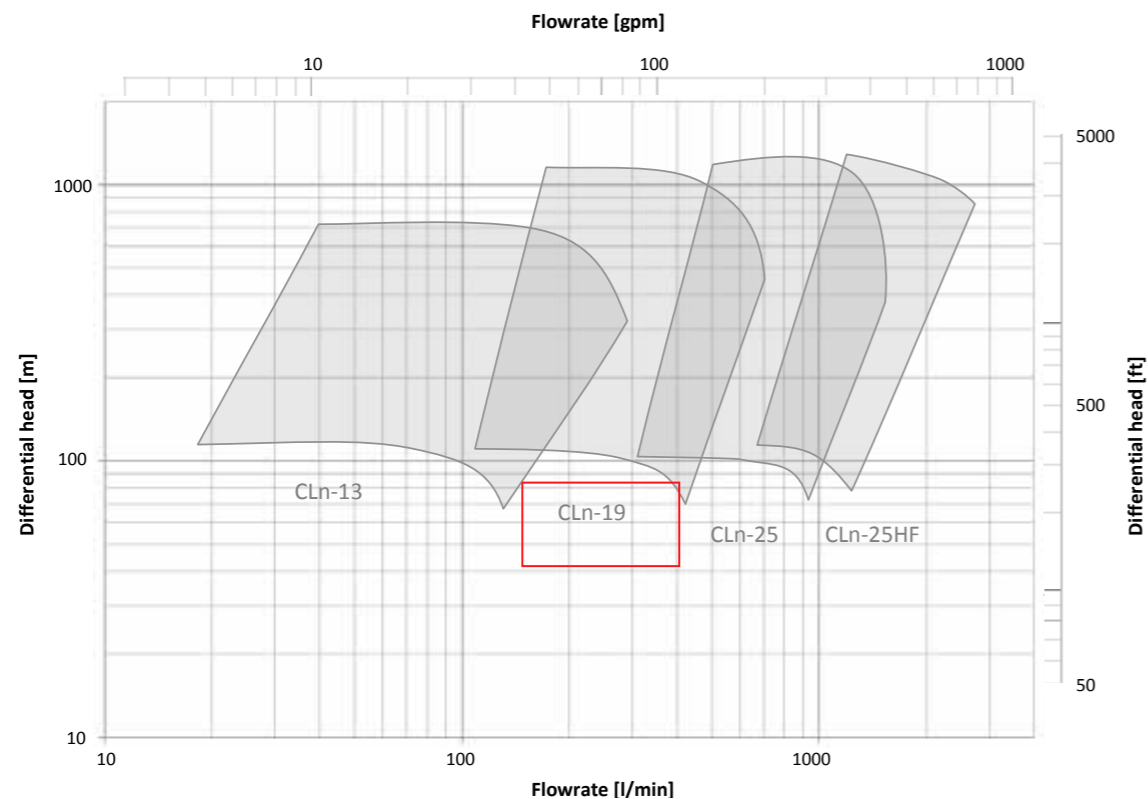
MULTI STAGE centrifugal pumps

MULTI STAGE PUMPS

PUMP MODEL	SEAL SYSTEM			LIQUIDS PUMPED		
	GRD	GRS	Labyrinth	LIN/LOX/LAR	LCO ₂	LNG

PROCESS PUMPS

CL(n)-13			✓	✓	✓	✓
CL(n)-19			✓	✓	✓	✓
CL(n)-25			✓	✓	✓	✓
CL(n)-25HF			✓	✓	✓	✓



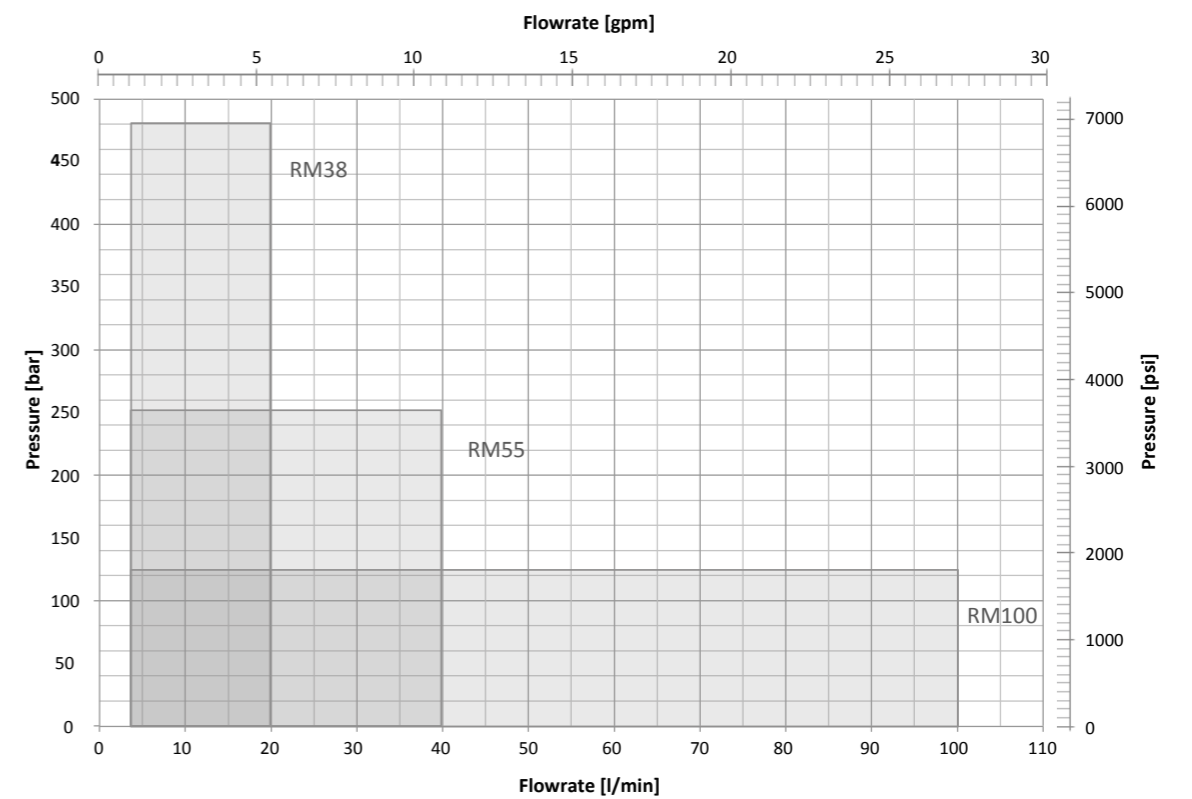
RECIPROCATING pumps

RECIPROCATING PUMPS

PUMP MODEL	SEAL SYSTEM			LIQUIDS PUMPED			INSULATION	
	GRD	GRS	Labyrinth	LIN/LOX/LAR	LCO ₂	LNG	Vacuum jacket	No jacket

PROCESS AND DISTRIBUTION PUMPS

RM-38DO	✓			✓				✓
RM-38D	✓			✓			✓	
RM-55DO	✓			✓				✓
RM-100D	✓			✓			✓	



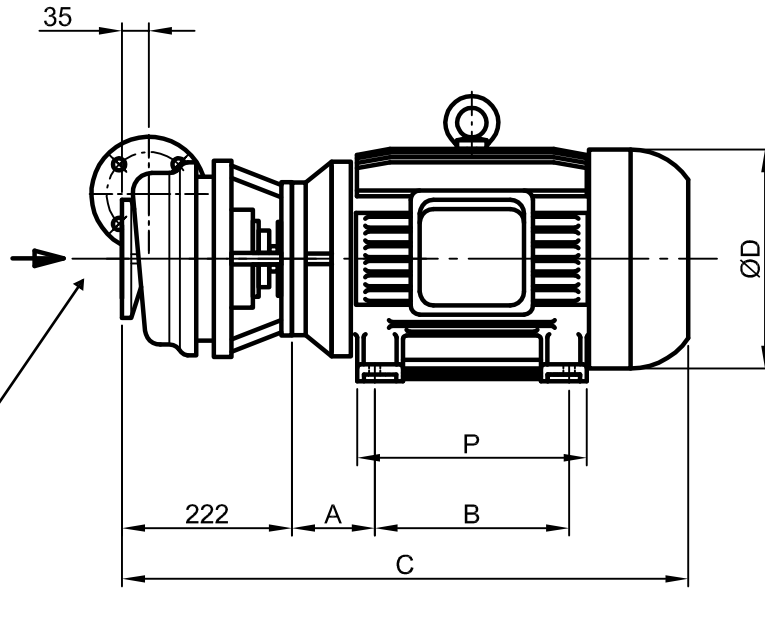
		Gezeichnet Dessiné	Geprüft Controlé	
	07.02.2000	NS.		
1	26.02.2002	NS		

		Gezeichnet Dessiné	Geprüft Controlé	
2	11.07.2012	RE		
3	18.09.2012	RE		

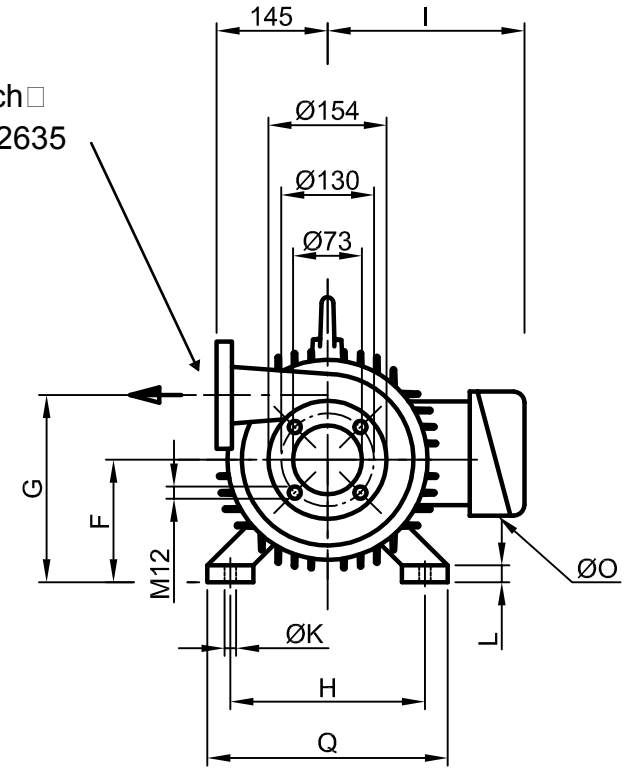
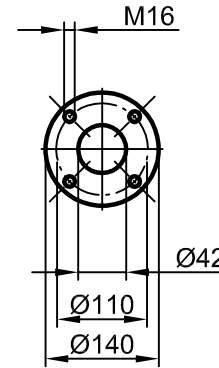
LIQUID GAS CENTRIFUGAL PUMP

Type : C - 19

sefco



Vorschweissflansch □
DN40 PN40 / DIN 2635



Vorschweissflansch □
DN65 PN6 / DIN 2631

" External forces according to drawing 4 13576 "

Subject to change

Dimensions in mm

Motor type	kW	A	B	C	D	E	F	G	H	I	K	L	M	N	O	P	Q
250M	55	168	349	1012	489		250	334	406	405.5	~25	~35			2 x M50 x 1.5	~400	~506
180L		121	279	834	350		180	264	279	280	~15	~25			2 x M40 x 1.5	~300	~345
180M		121	241	796	350		180	264	279	280	~15	~25			2 x M40 x 1.5	~300	~345
160M	15	108	210	740	310		160	244	254	245	~15	~25			2 x M40 x 1.5	~255	~310
132S	5.5/7.5	89	140	600	260		132	216	216	213	~12	~18			2 x M32 x 1.5	~185	~266
112M	4	70	140	551	220		112	196	190	191	~12	~16			2 x M25 x 1.5	~176	~230

4 12189