



**LAIZHOU KEDA CHEMICAL MACHINERY CO., LTD.**

# **P**RODUCT INTRODUCTION

**SIGMA KNEADER**



**ADD: Xidingjia Village Shahe Town, Laizhou City, Shandong, China**

**TEL: +86(0)5352377668 +86(0)5352343656**

**FAX: +86(0)5352377767**

**WhatsApp No.: +8615053589630**

**Email: [sales3@kedahuaji.com](mailto:sales3@kedahuaji.com)**

# PRODUCT DESCRIPTION



## 1. Introduction

The kneader is an ideal equipment for kneading, mixing, vulcanizing, and polymerizing high-viscosity, elastic-plastic materials. The kneader can be used to produce silicone rubber, sealants, hot melt adhesives, food gum bases, pharmaceutical preparations, etc. The kneader is a special mixing and stirring device. The most commonly used is two  $\Sigma$  paddles, which are arranged side by side tangential differential type, that is, one mixing paddle is fast, and one mixing paddle is slow, so as to produce shear. Shear force and different paddle speeds allow the mixed materials to be cut quickly, so that the materials can be mixed uniformly.

Vacuum kneader is a kind of kneader, mainly used in chemical rubber production fields such as silicone rubber, glass rubber, butyl rubber, hot melt adhesive. The kneader usually consists of several major components, such as a kneading system, a vacuum system, a heating system, a cooling system, and an electrical control system.

## 2. Advantages

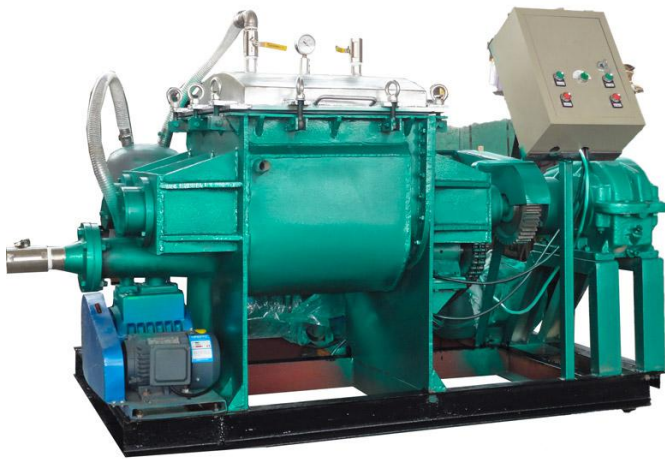
1. The kneader generally uses a through chassis for easy installation.
2. It adopts helical gear or hard tooth surface reducer, which makes the transmission with the host machine stable, low voice and long life.
3. The inner wall of the mixing paddle and mixing tank is made of SUS304 stainless steel or SUS316L stainless steel to ensure the purity of the product.
4. Advanced shaft seal structure and good sealing effect. The unique design of the vacuum box balance structure ensures that no black material is worn out.
5. Integrated electrical control (main engine operation, hydraulic cylinder turning, hydraulic cover opening and constant temperature control) and temperature control and temperature display for easy operation and process control.

## 3. Select model

1. The kneader can be made into ordinary type, pressure type, vacuum type, high temperature type.
2. According to the material, it can be divided into carbon steel kneader, stainless steel kneader and special material kneader.
3. The discharge methods include hydraulic cylinder dumping, ball valve discharge, screw extrusion, etc.
4. According to the design volume of the machine, it is divided into: 1--3000 liters.

5. According to the different heat carrier medium, it is divided into steam heating, heat conduction oil electric heating and water cooling type.

# PRODUCT DETAILS



# PRODUCT PARAMENTERS



specification	5L	10L	100L	300L	500L	1000L	1500L	2000L	3000L	
Effective volume L	5	10	100	300	500	1000	1500	2000	3000	
Feeding amount L	3.5	7	70	210	350	700	1100	1400	2100	
Main motor power Kw	1.1-1.5		4-7.5	7.5-18.5	15-30	18.5-45	22-55	37-75	45-110	
Screw motor power Kw	NO			3-4	3-4	4-5.5	5.5-7.5	7.5-11	11-15	
Discharge the way	High temperature	Manually turn cylinder		Hydraulic cylinder						
	Other type	Manually turn cylinder		Hydraulic cylinder	Hydraulic turn cylinder, screw discharge, the next material					
Mixing speed r/min	33/23		35/22	37/21	35/25	30/16				
Heating the way	High temperature	no			electricity					
	Other type	Electricity/steam								
Electric heating power Kw	HT	6-10	8-10	12-15	30-35	35-45	60-80	90-110	110-140	160-190
	OTHER	1.8	1.8	4.2	12	18	24	36	36-54	54-72
Steam pressure Mpa	0.3									
Vacuum type vacuum	-0.090Mpa									
Pressure type pressure MPa	0.45				0.35					
Dimension mm	ordinary	L	1100	1100	1600	2150	2550	2750	3030	3060
		W	410	410	610	850	1000	1200	1850	2250
		H	510	510	1360	1300	1550	1800	1850	2070
	vacuum	L	1100	1100	1600	2150	2550	2750	3030	3100
		W	1000	1000	610	1250	1320	1600	2150	2350
		H	520	520	1360	1400	1550	1800	1850	2070
Weight kg		210	250	1100	2000	2800	4200	5200	6400	9000
		~300	~340	~1250	~2200	~3000	~4500	~5500	~6800	~9500

Table parameters for reference only, according to customer requirements can be designed (a variety of volume, speed and special requirements) dedicated models

# SCOPE OF APPLICATION



## Widely used in high viscosity product

-----Chemicals Industry:

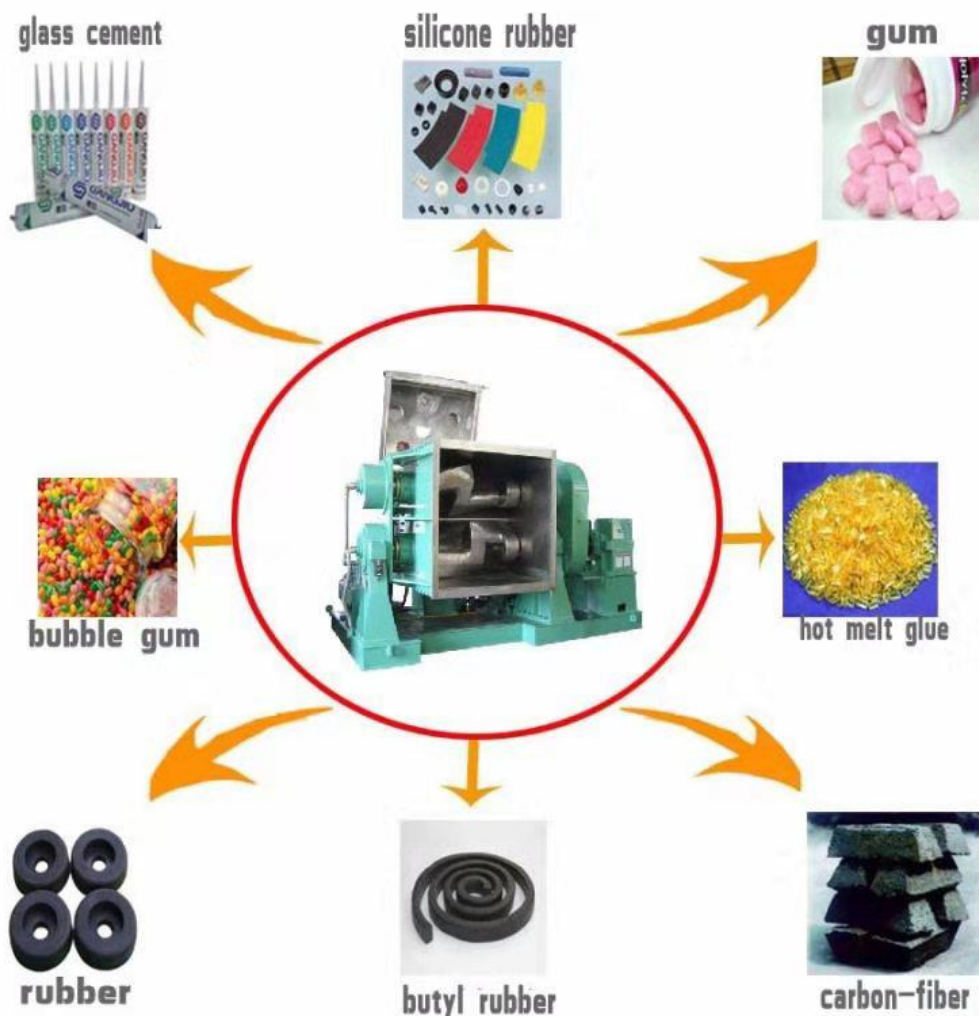
Resins, Sealant, silicon rubber, glue/ adhesive, paint, dye, BMC/CMC, pigment, plastics, batteries.

-----Food Industry:

Bubble gum, dough, chewing gum, soft candy, cheese etc.

-----Pharmaceutical:

Some medicines & medical materials.



# OUR CERTIFICATE

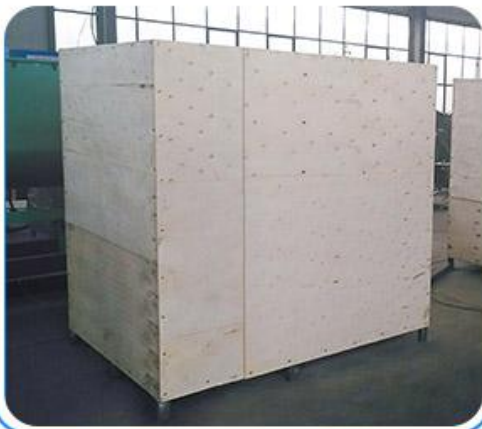


# PACKAGING AND SHIPPING



01

PACKED INTO WOODEN CASES



02

TRANSPORT BY CAR OR TRAIN



03

PORT



04

SEA OR AIR



# OUR COMPANY



**WELCOME TO  
OUR COMPANY  
FOR NEGOTIA-  
TION AND COOP-  
ERATION!**

**LAIZHOU KEDA CHEMICAL MACHINERY CO., LTD**

Laizhou Keda Chemical Machinery Co., Ltd, established in 2009, is a professional manufacturer engaged in the research, development, production, sale and service of Reactor, Kneader, Mixer, Emulsifying machine, Hot melt glue stick making machine, Paint production line, Plastic recycling machine, Plastic granulator, etc. We are located in Laizhou City Shandong Province with convenient transportation access. Dedicated to strict quality control and thoughtful customer service, our experienced staff members are always available to discuss your requirements and ensure full customer satisfaction. In recent years, our company has introduced a series of advanced equipment including lathe, milling machine, polishing machine, plasma cutting machine, argon arc welding machine, rolling machine, NC cutting machine. In addition, we have obtained ISO9001 and CE certificates. Selling well in all cities and provinces around China, our products are also exported to clients in such countries and regions as Thailand, Indonesia, Laos, Togo, Nigeria, India, Czech, Ecuador, Vietnam, Russia, India, Poland, South Korea, Rumania, etc. We also welcome OEM and ODM orders. Whether selecting a current product from our catalog or seeking engineering assistance for your application, you can talk to our customer service center about your sourcing requirements.

We'll provides high quality products and better after-sales service for customers. Our mission is to realize the dream for employees, increase profits for customers, and create value for the society. Welcome to our company for negotiation and cooperation!



KEDA MACHINERY

## OUR CUSTOMER



KEDA MACHINERY

# OUR TEAM





*Thank You*