




<b>To</b>	/		<b>From</b>				
<b>Country</b>	/		<b>Country</b>				
<b>Attn</b>	/		<b>Attn</b>				
<b>Tel</b>	/		<b>Tel</b>				
<b>Fax</b>	/		<b>Fax</b>				
<b>Email</b>	/		<b>Email</b>				
<b>Skype</b>	/		<b>Skype</b>				
<b>Website</b>	/		<b>Website</b>				
<b>Quote</b>	Date	February 11, 2014	<b>Valid</b>	10 days	<b>Warranty</b>	12 months	
<b>Payment</b>	T/T 100% down payment.		<b>Delivery time</b>	10 working days			
<b>Trade</b>	FOB Qingdao	<b>Packing type</b>	Wooden case	<b>Port of shipping</b>	Qingdao port		
<b>No</b>	<b>Product Name</b>	<b>Description</b>	<b>Photo</b>	<b>Unit</b>	<b>Qty</b>	<b>Unit Price</b>	<b>Total amount</b>
1.	Fully automatic side Seal strapping machine	<ul style="list-style-type: none"> <li>• Model: MH-100B</li> <li>• Color: white</li> <li>• Control: PLC(Siemens/Mitsubishi)</li> <li>• Table height: 1000 mm</li> <li>• Arch size: W1000 * H1000 mm</li> <li>• Packing material: pp strap(width 13,0mm)</li> <li>• 380V 3phase 50 HZ</li> <li>• Arch material: Aluminum alloy</li> <li>• Straps No: 3 straps</li> <li>• Strap speed: 3 seconds/cycle</li> <li>• Max. tension: 8 kg adjustable</li> <li>• Machine size: L1300 * W1000 * H1100 mm</li> <li>• Machine weight: 25 kgs</li> </ul>	 <p><b>Standard machine without conveyor</b></p>	Set	1		
0.	<b>Total amount</b>						



**Features:(MH-1·ΨB fully automatic side seal strapping machine)**

- 1.it's suitable for big&heavy cartons or cargo to packing.
- 2.the bonded position is on frame side.
- 3.the pp strap width 13,0mm
- 4,Ψsecond/cycle packing speed
- 5.standard arch size is W1000\*H1000mm
- 6.Siemens / Mitsubishi PLC control system
- 7.the temperature and cooling time can adjustable
- 8.the operator can mobile the machine by 4 wheels if change the working area
- 9.the machine with two motors on frame that can help the strap smooth to bear the orbital.

**Technical Specification:**

- arch size:W1000\*H1000mm
- table height: customizable
- Straps Number:Ψstraps
- packing material:pp strap(width 13,0mm)
- voltage:380V Ψphase 50HZ
- control type:foot switch/button switch
- arch material:aluminum alloy
- strap speed:Ψseconds/cycle
- maximum tension:80kgs adjustable
- machine size: L2300\*W1000\*H2000mm
- machine weight:290kgs

**Warranty item:(one year)**

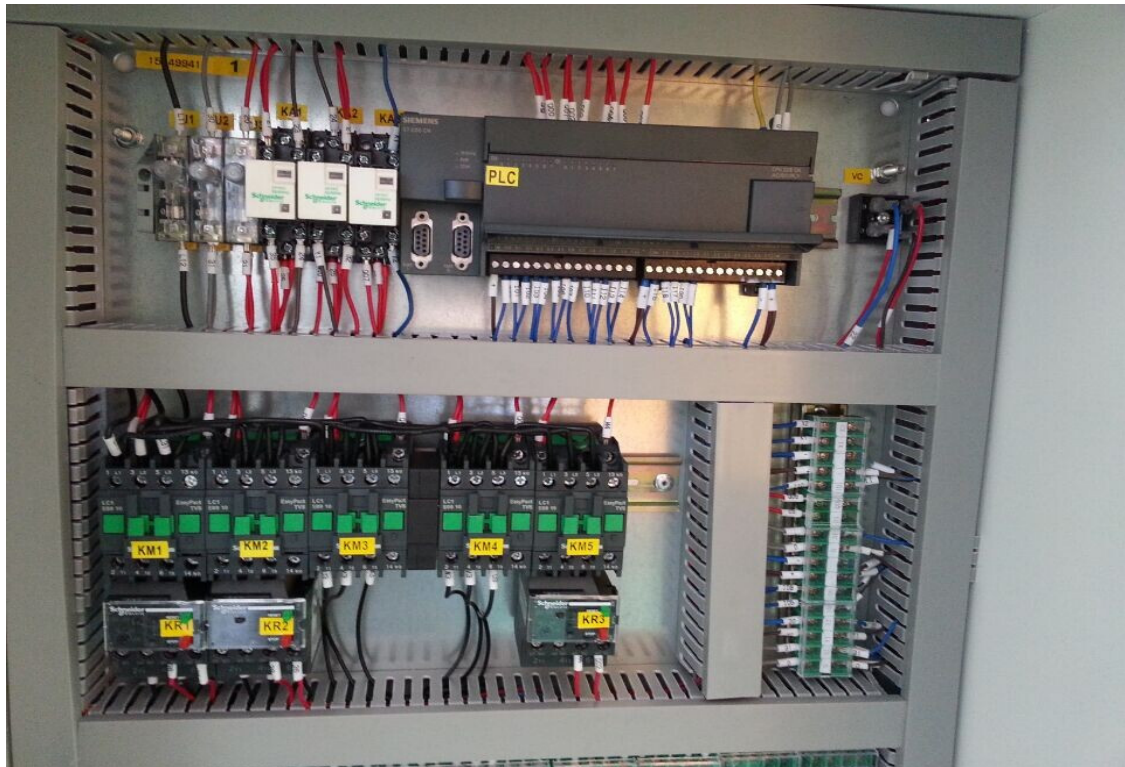
Motor/PLC/Inverter



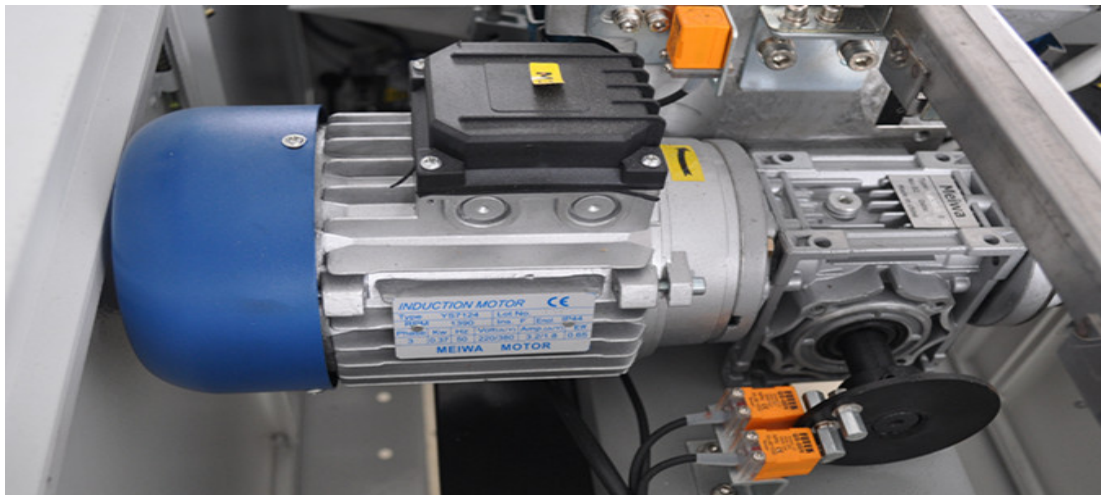
**Control panel**



## PLC Control



## motor



## Inner structure











