

شماره: ۱۴۰۲-۰۵۰۱
تاریخ: ۱۴۰۲/۰۵/۱۸
پیوست: ۴ صفحه

به نام خدای یکتا



انجمن ماشین سازان صنایع غذایی ایران

اداره کل محترم صنعت، معدن و تجارت استان کرمانشاه

با سلام

احتراما بازگشت به نامه شماره ۷۵۱۱۵۴ مورخ ۱۴۰۲/۰۵/۱۷ مبنی بر استعلام ساخت داخل موضوع پروفرما به شماره 10861712395 مورخ 11 JULY 2023 دستگاه پرکن کیسه به روش اسپتیک مورد درخواست شرکت محترم فرآورده های لبنی بهار دالاهو تصاویر ضمیمه به اطلاع می رساند، دستگاه های مذکور در حال حاضر توسط اعضای این انجمن سابقه ساخت ندارد.

لازم به ذکر است اظهار نظر در خصوص موارد مربوط به اصالت شرکت سازنده ماشین آلات و شرکت صادرکننده پروفرما، قیمت ماشین آلات بر اساس پروفرمای ارسال، تناسب قیمت و ظرفیت ماشین آلات و توجیه پذیری طرح مذکور در حیطه وظایف این انجمن نمی باشد و صرفا در خصوص میزان ساخت داخل ماشین آلات و تجهیزات اظهار نظر می نماید.

تاکید می شود این نامه فقط دستگاه هایی را که اطلاعاتشان در پیوست الحاقی آمده است شامل می شود و قابل تعمیم به هیچ دستگاه مشابه در گذشته، حال و آینده نمی باشد. همچنین پیوست ها بدون مهر انجمن معتبر نمی باشند.

پیشاپیش از مساعدت آن اداره کل محترم کمال تشکر را می نماید.



رونوشت: مرکز ساخت داخل صنایع ماشین سازی و تجهیزات وزارت صنعت، معدن و تجارت
رونوشت: شرکت فرآورده های لبنی بهار دالاهو

PRO FORMA

Seller (name & add)

CHOOBANI GENERAL TRADING L.L.C
Address: Dubai, UAE P.O.Box:116991,
Dubai, United Arab Emirates
Tel/Fax: +971 58 537 2313

Invoice NO. TMCI-BLEND-0161

Commodity code: REGISTART NO: 1025225

Country of origin:
Italy

Terms of payment: T/T

Terms of delivery: FOB

Transaction currency:
EURO

Invoice to (name & add)

Manizan Dairy (Bahar Dalahoo Dairy co.)
No.6, 4th Alley, South Sheikh Bahayi St.
Molla Sadra. Postcode: 1435917743
Tehran/Iran.

Buyer commercial card no:

10861712395

Pro forma date:

11th July 2023

Validity date:

11th July 2024

Transportation mode: By truck

Place of destination:

Iran -Kermanshah custom

IRC:

Register no:

Date:

Ref.	Qty.	Description	Total €
1	1	ASEPTIC FILLER 1) Single head aseptic filler RTT1 SB200 bag in drum 200l 50l 2) Aseptic buffer tank 400 lt for RTT1 SB200 single drum 3) Electric switch board for single head PORT OF LOADING : ITALY - TURKEY FINAL DELIVERY PLACE : KERMANSHAH	850,000.00
		Packing Woden Box in Container Total Weight of Pallets and boxes: 24000 KG	850,000.00

It is hereby certified that this pro forma shows the actual price of the goods describe, that no other pro forma has been or will be issued, and that all particulars are true and correct.

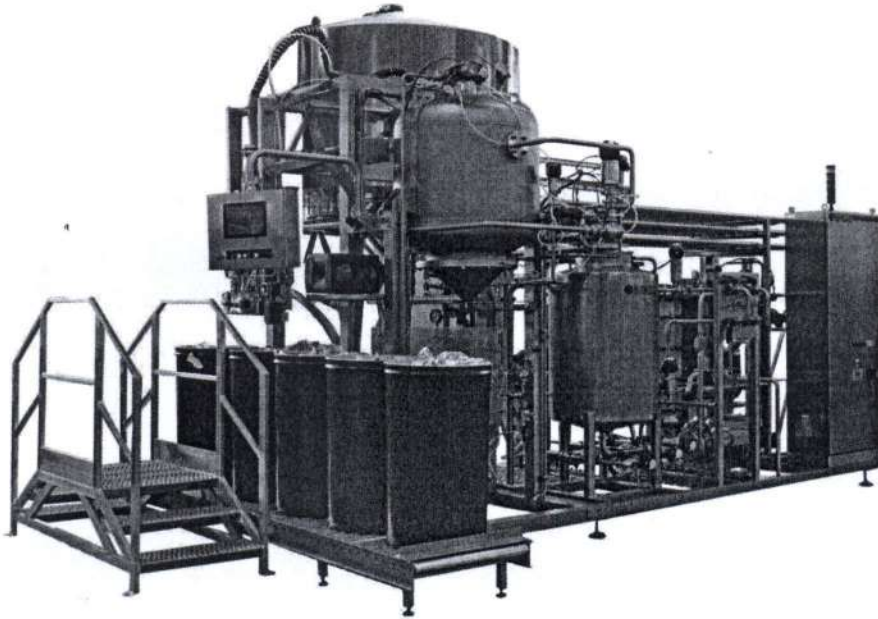


BLENDTECH

TMCI
PADOVAN

FOR MORE THAN 100 YEARS
Since 1919

A1) SINGLE HEAD ASEPTIC FILLER 220 L BAG IN DRUM

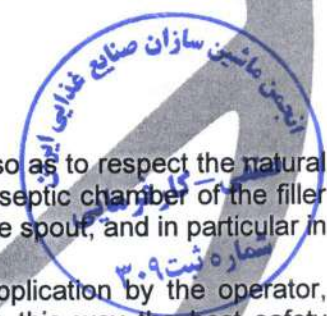


Composed by:

- Head in stainless steel
- **Chamber kept sterile with steam.**
- Machine equipped for cap with $\varnothing 1''$.
- Type of spout: thermoresistant to 100°C , pressure type.
- Cap sterilising with steam, before its opening.
- Application of the 220 kg bag on the filler vertical and not horizontal so as to respect the natural filling position of the 220 kg bag is ideal for coupling the bag with the aseptic chamber of the filler because it offers the advantage of eliminating the problems of tension the spout, and in particular in the area around the actual spout.
- Another advantage is the particularly easy and comfortable bag application by the operator, because he is never found in the drum movement area, obtaining in this way the best safety conditions, of the actual operator, related to the accident prevention norms.
- The filling comes about using a direct weight check with mass flow meter.

The supply includes:

- AISI 304 stainless steel supporting frame;
- Working platform for the operator;
- **One filling stations in stainless steel (PATENTED);**
- Push button panel start-stop command for the process operations;
- Pre-set weight indicator.
- Connection for C.I.P;
- Connection for steam;
- **MASS FLOWMETER;**
- Supporting frame;
- All the accessories required.



The standard working program foresees the following filling possibilities:

A. Filling of "IN LINE" drums (one after another).

B. Filling of test bags 5 KG

Other possible filling program must be studied together in order to satisfy particular needs.

A2) ASEPTIC TANK OF 400 LITRES

Totally in stainless steel AISI 304 working with nitrogen pressure with automatic control of the set pressure.

Complete with:

- Top flange;
- Washing ball;
- Safety valve;
- Group of pneumatic aseptic and no-aseptic valves;
- Connection for product inlet / outlet;
- Connection for C.I.P. steam, nitrogen;
- Supporting frame;

All the accessories required.

Technical data:

- Bag size : 220-50 l
- Capacity : 3.000 Kg/h condensate milk/cream
6.000 Kg/h regular milk
- Compressed air at 6 bar : 6 Nm³/h
- Nitrogen or Active charcoal treated air (only at the beginning and at the end of production or after sterilization) : 3 Nm³/h
- Steam at 6 bar : 100 kg/h
- Installed power : 0,55 kW/h
- Water : 0,2 m³/h

ELECTRO-PNEUMATIC PROCESSING AND CONTROL BOARD FOR THE PLANT "COMPLETE AUTOMATIC"

Totally controlled by PLC SIEMENS S7 - 1500.

Frame in stainless steel AISI 304.

PLC Siemens which allows the automatic control of the aseptic plant during the production cycle and the aseptic filler.

It includes:

Operator interface with the following functions:

- visualisation of the process temperatures,
- electronic instrumentation and electrical relay,
- pre-setting all parameters necessary for production,
- synoptic,
- information, in case of automatic cycle interruption, about the causes of this stop.

Label printer for the personalisation of the label, with:

- customer name,
- net weight,



- type of product,
- drum progressive number.

Carpentry in stainless steel Aisi 304.

Voltage required: 400Vac 50Hz - 3Poles + ground.

Absorption of electrical switch board with all motors running, about 30 A. The electrical switch board must be protected magnetic thermal differential switch, installed in the external part of the board, coordinated with characteristics suitable for working together with inverter (B type).

Protection grade of electrical switchboard: min IP54.

Short circuit current Icc 0,9 KA.

Ventilation kit.

Electromechanical Siemens.

Auxiliary Relays Finder.

Siemens power supply.

Phoenix terminal block.

General switch Rockwell.

Selectors, indicators, buttons and lighted buttons Schneider.

Emergency control unit Pilz.

Light column Schneider.

PLC Siemens with Memory card 12 MB.

HMI Asem panel, Accessories and piping.

Ethernet cable must be supplied by client in order to connect with remote assistance.

EXCLUSIONS (unless otherwise agreed):

- Roller conveyor for drums
- Crane for full drums;
- Import duties;
- Insurance for robbery, sabotage, accidents, strikes, fire and earthquakes;
- Goods unloading and positioning;
- Lifting devices;
- Civil works, foundations, drains;
- Waste conveyors and channels;
- Electrical connections;
- Steam reducer;
- Steam and condenses piping and relative insulation from boiler to utilities;
- Cooling unit and relative piping;
- Compressed air generator and relative piping;
- Piping supports;

Raw material, energy and water required for:

- Installation,
- Testing.
- Consumable items or chemicals;
- Maintenance costs;
- Electrical power and lights for commissioning;
- Whatever else not mentioned in the offer.