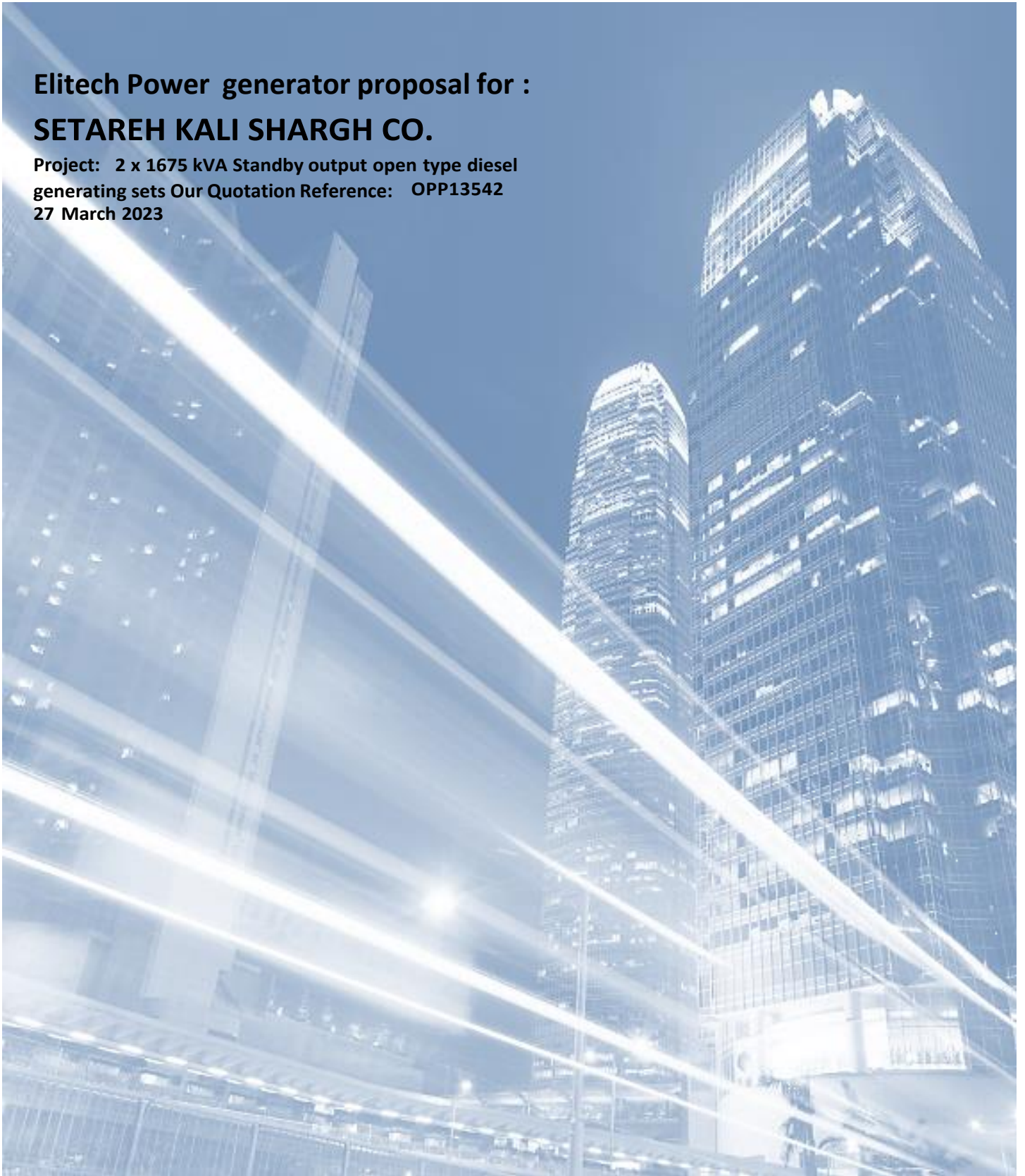


# Elitech Power Generation Co

## Elitech Power generator proposal for : SETAREH KALI SHARGH CO.

Project: 2 x 1675 kVA Standby output open type diesel  
generating sets Our Quotation Reference: OPP13542  
27 March 2023



**Elitech Power Generation Co.**  
Lebanon office: 2nd floor, Tohme Bldg.  
Almelleh Coop. Mosharfyye, Beirut  
[www.elitech-power.uk](http://www.elitech-power.uk)



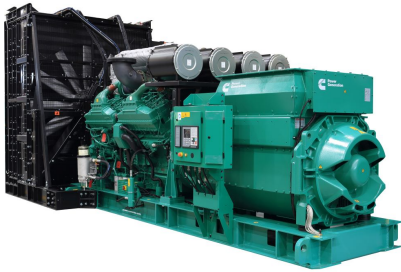
# Pro-Forma Invoice

**Elitech Power Generation Co.**  
 Lebanon office: 2nd gloem, tohme bldg.  
 Almelleh coop. Mosharfyye, Beirut  
[www.elitech-power.uk](http://www.elitech-power.uk)

<b>Customer Name</b>	SETAREH KALI SHARGH	<b>Our Quotation Reference</b>	OPP13542- Rev 2
<b>Date</b>	27 March 2023	<b>Your Reference</b>	2 x 1675kva Genset
<b>Project Reference</b>	2 x 1675kva, 400v, 50hz ,DG sets.		

Item No	Description of Equipment	Qty	Price Each Euro	Total Price Euro
1	<p>Supply of a <b>Diesel Generator Set</b>, diesel engine driven generating set, model <b>C1500D5P (CUMMINS POWER- INDIA)</b> with a standby power output of <b>1675 kVA</b>, 1340 kWe at 0.8 power factor, 400/231 volts, three phase, 50Hz at 1500 rpm.</p> <p><b>Engine: Cummins KTA50G8</b>            Engine Air Cleaner-Duty Rating, Normal Duty            Engine Speed Governing, Isochronous Electronic            Engine Coolant Heater, 240V</p> <p><b>Alternator: Stamford PI734C /S7L1D-C</b>            50Hz, 12 Leads, 400V, 150C,            Voltage regulator - PMG, Torque Match            Genset Housing - Sound Attenuated, Steel, Munsell Green Cooling System - Genset Mounted Radiator, 50C / 122F            Primary Electrical Isolation Device, 2500A, 3Pole, ACB circuit breaker, 100%</p> <p>Control Panel Mounting (View from Generator End), Power Power Command PCC3.3 control module.            Control Language, English.            Operation Mode, Stand Alone Warning - Manual &amp; Auto &amp; Synchronized Start, Low Battery Voltage Shutdown - Low Coolant Level Display - Control Graphical            Control Cabinet Heater, None Supplied            Starting Batteries - Lead Acid Batteries - Wet            Battery Charger            Fuel Tank - In Skid, Single Wall, 1000/1200 Litres, With Spillage Catchment External bunding required for standard integral tank dimensions (mm) Standard            Genset Testing: Standard Factory Test            Test Records: Certified Test.</p> <p><b>Total CIF (Behind Bandar Abbas Customs)</b></p>	2	€ 208,500.00	€ 417,000.00





# Pro-Forma Invoice

**Elitech Power Generation Co.**  
 Lebanon office: 2nd gloom, tohme bldg.  
 Almelleh coop. Mosharfyye, Beirut  
 www.elitech-power.uk

<b>Customer Name</b>	SETAREH KALI SHARGH CO.	<b>Our Quotation Reference</b>	OPP13529- Rev 2
<b>Date</b>	27 March 2023	<b>Your Reference</b>	2 x 1675kva Genset
<b>Project Reference</b>	2 x 1675kva, 400v, 50hz ,DG sets.		

<b>Technical Literature</b>	( <a href="https://www.cumminsindia.com">https://www.cumminsindia.com</a> ) or the attachment to view technical datasheet. Opens in web browser.
<b>Despatch</b>	The equipment will be available for despatch ex works approximately 12 working weeks from date of receipt of acceptable written instructions to proceed & deposit, based on current major component delivery and subject to confirmation at that date.
<b>Validity</b>	All prices are valid for 6 days from the above submission date of this proposal. However due to unstable material cost and currency exchange rates currently prevailing, should these costs vary more than 7% we reserve the right to amend our offer.
<b>Country Of Origin</b>	The generating set package is of genuine india origin.
<b>Payment Terms</b>	100% deposit with order by bank telegraphic wire transfer against invoice.
<b>Packing &amp; Delivery</b>	Prices quoted are for goods available CIF (Behind Bandar Abbas Customs)
<b>Inspection &amp; Testing</b>	The equipment will be tested in accordance with CUMMINS POWER - INDIA standard test procedure. Cummins standard test reports will be provided. Pre-despatch visual inspection of the units can be arranged at CUMMINS POWER facility in INDIA.
<b>Documentation</b>	We have included for the supply of one electronic copy of our standard operating instructions with the equipment.
<b>Terms &amp; Conditions</b>	Our offer including prices quoted are based upon Cummins Power Solutions standard Terms and Conditions of Sale - Product, a copy of which is attached.
<b>Warranty</b>	The equipment has a warranty period of 12 months from advice goods are ready for despatch or 1200 hours from commissioning, whichever is the soonest. Please refer to Section 8 of Cummins Power standard Terms and Conditions of Sale - Product for further detail.







# Diesel Generator Set

## K50 Series

1000-1200 kWe, 1250-1500 kVA Prime



### Reliable and Durable

Cummins® 'K50 series' diesel engine with strong regrindable crankshaft, high strength connecting rod, low pressure fuel lines, STC (Step Timing Controls) injectors and high volume coolant system make 'K50 series' generating sets, more reliable and durable. Engines have clocked millions of hours operating in some of the world's most demanding conditions. Current engines are regularly upgraded with new technologies for better performance and economy.

The ultimate proof of superior performance and reliability is the fact that Cummins® entities worldwide source these engines from Cummins India for their markets.

### Unmatched Warranty

Cummins® 'K50 series' diesel engine generating sets are a truly cost effective solution to long term power need backed by industry best, 2 years / 5000 hrs warranty, for the entire generating set.

With superior experience in technology, design capability and commitment reliability and quality we offer an unmatched 5 years or 5000 hours (including above 2 years) warranty coverage on 5 critical components (5C) of the engine – Cylinder Head, Camshaft, Crankshaft, Cylinder Block, Connecting Rod against manufacturing defect

### Cummins Advantage

Special features of Cummins® 'K50 series' engines like STC (Step Timing Controls) injectors, low temperature aftercooler, square combustion chamber, optimised turbocharging and precision heavy duty camshaft make these engines the ultimate in exceptional fuel efficiency all across the operating range.

### Single Source Power Assurance

Design, manufacture and testing of engine, alternator and other accessories is done by Cummins Group of companies for optimum performance and is backed by a countrywide product support network with a single source responsibility for the entire package.

### Standard Scope

**Engine:** Cummins® 'K50 series' direct injection, water cooled engine, 16 cylinder, 4 stroke, rated at 1500 RPM, conforming to ISO 3046 / IS 13018 has the following specifications:

- Cummins PT fuel pump
- Cummins heavy duty ESTC injectors
- Holset turbocharger, pulse tuned exhaust manifold, stainless steel exhaust flexible connections
- Radiator or heat exchanger, coolant inhibitor
- Plate type lube oil cooler
- Outboard aftercoolers
- Full flow paper element filters - fuel, lube oil and by-pass
- Dry type replaceable paper element air cleaner with restriction indicator
- Flywheel housing & flywheel to suit single/ double bearing alternator
- Holset flexible coupling for double bearing alternator
- Starting motor – Electric, battery charging alternator
- Cummins PowerCommand® microprocessor based genset controller
- First fill lube oil and coolant

**Alternator:** Stamford brushless alternator

- Separately excited, self-regulated - Class 'H' insulation
- Salient pole revolving field
- Single bearing
- PMG standard
- Space heater & RTD & BTD's only sensor - (without scanner)

**Accessories:**

- Silencer suitably optimized to reduce noise
- Sturdy base rail
- 990 ltrs. free standing fuel tank
- 4 x 12 V dry, uncharged batteries with connecting leads and terminals



**Optionals**

**Engine:** Oil/Coolant heater, No cool, PHE, Air starter

**Alternator:** Double bearing

**Control Panel:** PC3.3- Bargraph for PC3.3 Panel with kW, Power factor, Frequency, Current, Voltage - Remote HMI AMF control panel, Battery charger, Remote/Auto start panel, Auto/Manual synchronizing panel, Audio/Visual annunciation for faults, Auxiliary output relays and remote annunciators

**Control Panel: PowerCommand® PC 3.3**

The PowerCommand® control system is an integrated microprocessor based generator set control system providing voltage regulation, engine protection, alternator protection, operator interface and isochronous governing.

**AmpSentry** – Includes integral AmpSentry protection, which provides a full range of alternator protection function which are matched to the alternator provided.

**Power Management** – Control function provides battery monitoring, testing and a smart starting control system.

**Advanced Control Methodology** – Three phase sensing, FET based full wave rectified voltage regulation and a PWM output for stable operation with all load types.

**Communications Interface** – Control comes standard with PCCNet and Modbus interface.

**Regulation Compliant** – Prototype tested: UL, CSA and CE compliant.

**Service** - InPower™ PC-based service tool available for detailed diagnostics, setup, data logging and fault simulation.

**Reliable Design** – For reliable operations in harsh environment.

**Multi-language support****Independent of PC/ laptop for setting up****Operator panel features**

**Operator Panel features** – The operator panel, in addition to the alternator, displays the Utility/ AC Bus data.

**Operator/ Display functions**

- 320 x 240 pixels graphic LED backlight LCD with bar graph for displaying electrical parameters
- Auto, manual, start, stop, fault reset and lamp test/panel lamp switches
- Alpha-numeric display with pushbuttons
- LED lamps indicating genset running, remote start, not in auto, common shutdown, common warning, manual run mode, auto mode and stop

**Paralleling Control Functions**

- Digital frequency synchronization and voltage matching
- Isochronous kW and kvar load sharing controls
- Droop kW and kvar control
- Sync check
- Extended paralleling (Peak Shave/Base Load)
- Digital power transfer control (AMF) provides load transfer operation in open or closed transition or soft (ramping) transfer mode

**Alternator Data**

- Line-to-neutral and line-to-line AC volts
- 3-phase AC current
- Frequency
- kW, kvar, power factor kVA (three phase and total)

**Engine Data**

- DC voltage
- Engine speed
- Lube oil pressure
- Coolant temperature/ low level
- Comprehensive FAE data (where applicable)

**Other Data**

- Genset model data
- Start attempts, starts, running hours, kW hours
- Load profile (operating hours at % load in 5% increments)
- Fault history
- Data logging and fault simulation (requires InPower)

**Standard control functions****Digital Governing**

- Integrated digital electronic isochronous governor
- Temperature dynamic governing

**Digital Voltage Regulation**

- Integrated digital electronic voltage regulator
- 3-phase, 4-wire line-to-line sensing
- Configurable torque matching

**AmpSentry AC Protection**

- AmpSentry protective relay
- Over current and short circuit shutdown
- Over current warning
- Single and three phase fault regulation
- Over and under voltage shutdown
- Over and under frequency shutdown
- Overload warning with alarm contact
- Reverse power and reverse var shutdown
- Field overload

**Engine Protection**

- Battery voltage monitoring, protection and testing
- Over speed shutdown
- Low oil pressure warning and shutdown
- High coolant temperature warning and shutdown
- Low coolant level warning or shutdown
- Low coolant temperature warning
- Fail to start (over crank) shutdown
- Fail to crank shutdown
- Cranking lockout
- Sensor failure indication
- Low fuel level warning or shutdown

**Control functions**

- Time delay start and cool down
- Real time clock for fault and event time stamping
- Exerciser clock and time of day start/stop
- Data logging
- Cycle cranking
- Load shed/ dump as per configurable priority
- Configurable inputs and outputs (4)
- Remote emergency stop

**Options**

- Auxiliary output relays and remote annunciators

**Technical Data****Generator set specification**

Model	C1250 D5 P	<b>C1500 D5 P</b>
Prime Power Rating kVA	1250	1500
Output Voltage and Frequency	415 Volts, 50 Hz	415 Volts, 50 Hz
Power Factor	0.8 (lag)	0.8 (lag)
No. of phases	3 phase	3 phase

**Engine specifications**

Make	Cummins	Cummins
Model	KTA 50 G3	KTA 50 G8-I
No. of cylinders	16 'Vee'	16 'Vee'
Aspiration	Turbocharged-Aftercooled	Turbocharged-Aftercooled
Bore and Stroke	159 mm x 159 mm	159 mm x 159 mm
Displacement	50.3 ltrs	50.3 ltrs
Output - Prime	1470 bhp (1097 kWm)	1735 bhp (1294 kWm)
Fuel consumption @ 75% load with Radiator & Fan	190.8 ltr/hr	231 ltr/hr
Fuel consumption @ 100% load with Radiator & Fan	251.8 ltr/hr	301.7 ltr/hr
Total wet weight ( engine + radiator)	6824 kg	7205 kg
Length x Width x Height (engine)	2978 x 2080 x 1780 mm	2978 x 2080 x 1780 mm
Compression Ratio	13.9:1	14.9 : 1
Piston Speed	7.95 m/s	7.95 m/s
Governor / Class	Electronic / A1	Electronic / A1
Lubricating oil sytem capacity	177 ltrs	177 ltrs
Coolant capacity (engine + radiator)	440 ltrs	510 ltrs
Combustion air intake @ 100% load (+/- 5%)	81.6 m <sup>3</sup> /min	95.5 m <sup>3</sup> /min
Fan air flow across radiator	27357 ltrs/sec	28400 ltrs/sec
Exhaust Temperature	529 °C	481 °C

**Alternator specifications**

Make	Stamford	Stamford
Frame size / Model No.	HCK6Z	PI734C
Voltage Regulation	+ 0.5%	+ 0.5%
Insulation	Class H	Class H
Standard Enclosure	IP 23	IP 23
Winding Pitch	2 / 3 Pitch	2 / 3 Pitch
Stator Winding	Double layer lap	Double layer lap
Rotor	Dynamically balanced	Dynamically balanced
Wave form distortion	No load < 1.8 %, no distorting / balanced linear load < 5 %	No load < 1.8 %, no distorting / balanced linear load < 5 %
Telephone interference Factor	Better than 50	Better than 50
Total Harmonic Factor	Better than 2%	Better than 2%

**Conformance standards**

IS/IEC 60034-1, IS 1460, ISO 8528, ISO 3046, IS 13018, ISO 9001

**Rating definitions**

Prime Power (PRP):

Applicable for supplying power to varying electrical load for unlimited hours. Prime Power (PRP) is in accordance with ISO 8528. Ten percent overload capability is available in accordance with ISO 3046.

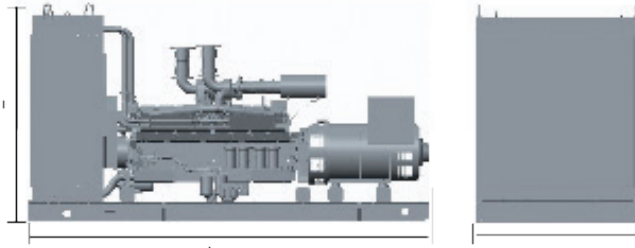
- Fuel consumption data is based on diesel having specific gravity of 0.85 and conforming to IS:1460

- Fuel consumption tolerance is +5%

**Typical Open Genset Dimensions**

Genset Model	Rating (kVA)	Length (mm)	Width (mm)	Height (mm)	Wet Weight <sup>##</sup> (kg)	Standard Fuel Tank Capacity - External
C1250 D5 P	1250 kVA	5212	2179	3001	11235	990
C1500 D5 P	1500 kVA	5380	2513	3219	13476	990

<sup>##</sup> Approximate Weight



Authorised Representative

**Cummins Power Systems Offices**

- Bengaluru: Tel.: (080) 2325 9161 / 63, 2325 9165 / 67  
Fax: (080) 2325 9164
- Chandigarh: Tel.: (0172) 224 0371-73  
Fax: (0172) 224 0372
- Chennai: Tel.: (044) 2446 8110 / 2446 8113  
Fax: (044) 2491 1120
- Gurgaon: Tel.: (0124) 391 0900-01  
Fax : (0124) 391 0916
- Hyderabad: Tel.: (040) 2340 9970 / 2340 9980  
Fax. (040) 2340 9990
- Jaipur: Tel.: (0141) 236 4944  
Fax: (0141) 403 8794
- Kolkata: Tel.: (033) 2287 8065 / 2287 2481  
Fax: (033) 2290 3839
- Lucknow: Tel.: (0522) 230 5049 / 230 5059  
Fax: (0522) 230 5035
- Mohali: Tel.: (0172) 224 0371 / 72 / 73  
Fax: (0172) 224 0371 / 72 / 73
- Vadodara: Tel.: (0265) 233 0627 / 3053627  
Fax: (0265) 234 0623



Visit our facebook page at :  
Cummins Power Generation India

**“Our energy working for you.”**



Cummins is registered trademarks of Cummins Inc.  
Specifications are subject to change without notice.  
PSBU/020/K50/1250-1500kVA/HD/MP/Revision-2 (07/2018)



**Cummins India Limited  
Power Systems Business**  
Cummins India Office Campus  
Tower-A, 8<sup>th</sup> Floor, S. No. 21,  
Balewadi, Pune – 411 045 (India)

Email: [cpgindia@cummins.com](mailto:cpgindia@cummins.com)  
[www.cumminsindia.com](http://www.cumminsindia.com)