



FUJITA STEAM REGULATORS (RC THREAD AND FLANGE TYPE)

SRV/D Series

FLUID	Steam & Nonflammable Gas
OPERATING PRESSURE	MAX 1.3Mpa (13kgf/cm ² : 186PSI)
TEMPERATURE	MAX 205 °C

BSPT AND NPT THREADS ARE AVAILABLE ON OPTION.
DIN AND ANSI FLANGES ARE AVAILABLE ON OPTION.

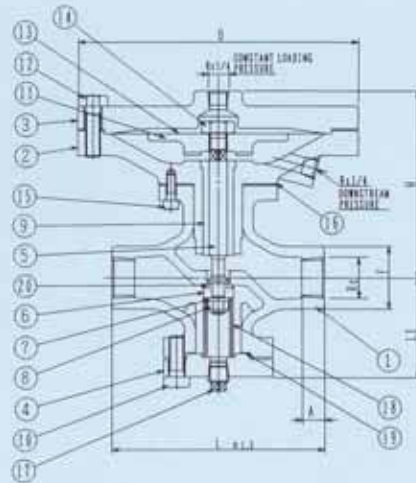
流体	蒸気ガス
圧力(1次側)	MAX 1.3Mpa (13kgf/cm ² : 186PSI)
温度	MAX 205 °C

ねじ接続の標準は、JIS RCです。BSPT/NPTも製作可能
フランジ接続の標準は、JIS10kRFです。ANSI/DINフランジも製作可能

MODEL-NO	Rc	L	A	F	H	L1	D	Lift	Weight (kg)
SRV/D-RC-20A	3/4	140	14.1	42	128	67	196	3.5	9.7
SRV/D-RC-25A	1	165	16.2	50	148	79	235	5	13.5

D.G.C MARK	PARTS	NO
1	BODY	1
2	DIAPHRAGM BOX	1
3	DIAPHRAGM COVER	1
4	BOTTOM COVER	1
5	STEM	1
6	DISC ADAPTER	1
7	WASHER	1
8	U-NUT	1
9	STEM GUIDE	1
10	BOLT	4
11	DIAPHRAGM PLATE	1
12	COVER BOLT	12
13	DIAPHRAGM	2
14	SET-BOLT	1
15	CAP-SCREW	6
16	GASKET	1
17	PLUG	1
18	SPRING	1
19	GASKET	1
20	DISC-RING	1

DIAPHRAGM OPERATED ダイヤフラム式



FUJITA STEAM REGULATORS (RC THREAD AND FLANGE TYPE)

SRV/B Series

FLUID	Steam & Nonflammable Gas
OPERATING PRESSURE	MAX 1.5Mpa (15kgf/cm ² : 215PSI)
TEMPERATURE	MAX 210 °C

BSPT AND NPT THREADS ARE AVAILABLE ON OPTION.
DIN AND ANSI FLANGES ARE AVAILABLE ON OPTION.

流体	蒸気ガス
圧力(1次側)	MAX 1.5Mpa (15kgf/cm ² : 215PSI)
温度	MAX 210 °C

ねじ接続の標準は、JIS RCです。BSPT/NPTも製作可能
フランジ接続の標準は、JIS10kRFです。ANSI/DINフランジも製作可能

MODEL-NO	Screw RC	End to End L	Screw Length A	Out Dia F	Center to Top H	Center to Bottom L1	Lift a	Cylinder Dia D	Weight (kg)
SRV/B-RC-20A	3/4B	140	14.1	42	120	67	3.5	158	7.2
SRV/B-RC-25A	1B	165	16.2	50	136	79	5	175	10
SRV/B-RC-32A	1 1/4B	203	18	65	203	97	8	300	30.2
SRV/B-RC-40A	1 1/2B	203	18	65	203	97	8	300	30.2

D.G.C MARK	PARTS	NO
1	BODY	1
2	CYLINDER BOX	1
3	COVER	1
4	BOTTOM COVER	1
5	DISC	1
6	ROD GUIDE	1
7	CENTER ROD	1
8	SEAL PLATE	1
9	SEAL PLATE	1
10	BELLOWS	1set
11	BOLT	1set
12	CAP SCREW	1set
13	BOLT	1set
14	NUT	1
15	SPRING WASHER	1
16	PLUG	1
17	SPRING	1
18	DISC RING	1
19	DISC RING SET BOLT	1
20	U-NUT	1
21	GASKET	1
22	ROD GASKET	1
23	FLANGE GASKET	1
24	DIAPHRAGM GASKET	2

BELLOWS OPERATED ベローズ式

