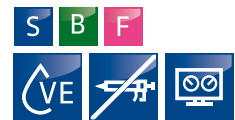


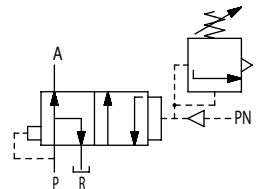
## MSÜV Diaphragm actuated unloading, overflow safety valves

	MSÜV 20/150	MSÜV 29/300	MSÜV 29/450	MSÜV 16/700	MSÜV 10/1200	MSÜV 6/1000
Permissible positive operating pressure	40–150 bar	80–300 bar	120–450 bar	200–700 bar	350–1,200 bar	100–1,000 bar
Recommended flow rate	0–650 l/min	0–1,000 l/min	0–1,000 l/min	0–350 l/min	0–150 l/min	0–50 l/min
Dimensions H x W x D	370 x ø 250 mm	370 x ø 250 mm	370 x ø 250 mm	370 x ø 250 mm	370 x ø 250 mm	370 x ø 250 mm
Weight	23.0 kg	23.0 kg	26.0 kg	24.0 kg	25.0 kg	25.0 kg
Without operating energy (open/closed)	X/-	X/-	X/-	X/-	X/-	X/-
Pressure inlet P (connecting thread, seals)	G1½ IG, K	G1½ IG, K	G1¼ IG, K	Lens	Lens	Lens
Pressure output A (connecting thread, seals)	G1½ IG, K	G1½ IG, K	-	-	-	-
Return outlet R (connecting thread, seals)	G1½ IG, K	G1½ IG, K	G1½ IG, K	G1 IG, K	G1 IG, K	G1 IG, K



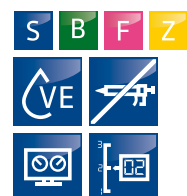
The universal regulating valve combines the key functions of high-pressure technology in a single component. The pneumatic control provides soft switching.

Special features: Designed for frequent switching operations, available in different materials according to the flow medium, usable for recycling water, large pressure adjustment range.



## MDSV Diaphragm actuated dual-switching safety valves

	MDSV 15/800	MDSV 12/1200	MDSV 10/2000	MDSV 7/3000
Permissible positive operating pressure	200–800 bar	300–1,200 bar	500–2,000 bar	800–3,000 bar
Recommended flow rate	0–350 l/min	0–220 l/min	0–150 l/min	0–80 l/min
Dimensions H x W x D	400 x ø 250 mm	400 x ø 250 mm	395 x ø 250 mm	395 x ø 250 mm
Weight	28.0 kg	28.0 kg	22.2 kg	22.2 kg
Without operating energy (open/closed)	X/-	X/-	X/-	X/-
Pressure inlet P (connecting thread, seals)	Lens	Lens	Lens	Lens
Pressure output A (connecting thread, seals)	Lens	Lens	Lens	Lens
Return outlet R (connecting thread, seals)	G1 IG, K	G1 IG, K	G1 IG, K	G1 IG, K



The universal regulating valve combines all relevant functions of high-pressure technology in a single component. The pneumatic control provides soft switching.

Special features: Designed for frequent switching operations, large pressure adjustment range, integrated holding valve, prepared for electrical position sensor.

