
ZLJ120 圆盘造粒机说明书

ZLJ 120 Disc Granulator

Manual

济南细川环保设备有限公司

Jinan Xichuan Environmental Protection Equipment Co., Ltd

Tel: +86-531-88878678 E-mail:xce@xcdryer.com

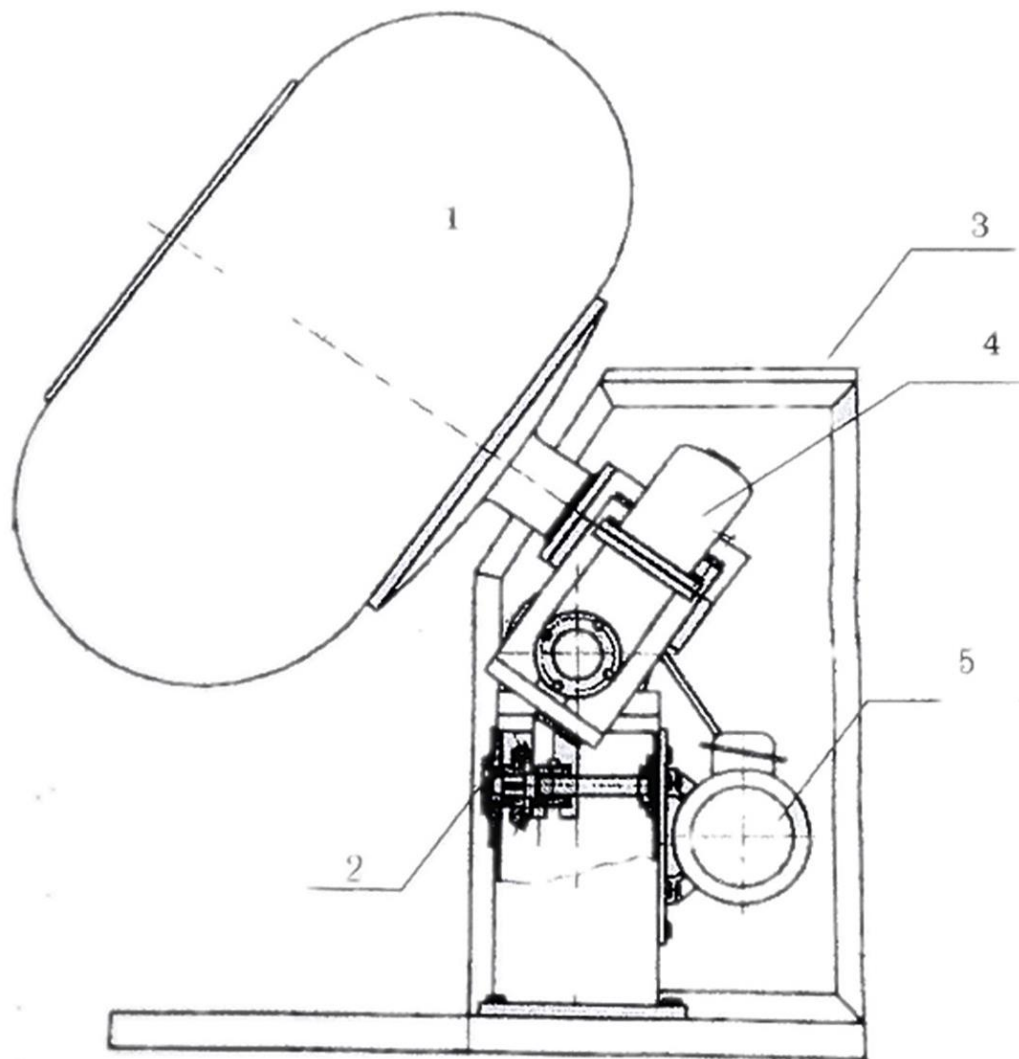
Website: <http://www.xcdryer.com>

目 录(Catalogue)

一、 外形图	1
1. Outline drawing	1
二、设备简介	2
2. Machine overview	2
三、工作原理	2
3. Working principle.....	2
四、主要技术参数	4
4. Main technical specification.....	4
五、设备安装及使用	4
5. Installation and operation	5
六、设备保养	5
6. Maintenance.....	5

一、 外形图

1. Outline drawing



1. 锅体 (granulating pot) 2. 手轮 (hand wheel) 3.机身 (machine body)
4.减速机 (reducer) 5. 电机 (motor)

二、设备简介

该圆盘造粒机主要用于制药工业中药丸，食品、轻工、化工行业中球形或颗粒物料的滚制，混合和打光。如滚制干燥剂、生产化工填料、氢氧化铝球、氧化铝球、瓷球分子筛、催化剂等。该机由机身、蜗轮箱体、锅体、电器等主要部分组成，它由电动机通过三角皮带驱动蜗轮、蜗杆、带动锅体旋转，在离心力的作用下，使物料在锅内作上下翻滚磨擦，达到混合，滚球、制丸和打光的效果。

2. Machine overview

The disc granulator is mainly used for pilling in pharmaceutical industry, and ball or granule material rolling, mixing and polishing in food industry, light industry and chemical industry, such as desiccant rolling, production of chemical stuffing, aluminum hydroxide ball, alumina ball, ceramic ball molecular sieve and catalyst etc.

The machine consists of the machine body, turbine box, pot, electrical etc. Driven by motor through V-belt, pot rotates and material rolls and mixes in the pot to realize ball rolling, pilling and polishing.

三、工作原理

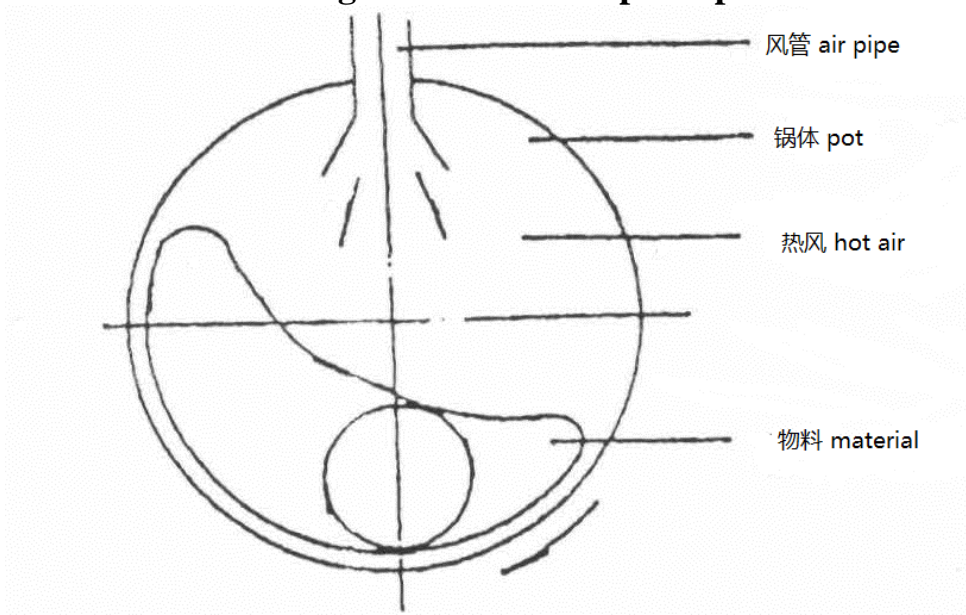
通过锅体顺时针旋转，使物料在锅内翻滚，滑移摩擦研磨使其在全部芯片上均匀分布。同时向锅内通以热风，可迅速除去物料表层水分，最后得到合格的产品。机器以最合理锅型，稳定的线速度，理想的物流曲线流，实现不同物料的不同颗粒大小的造粒。采用变频电机实现对物料形态的控制。

3. Working principle

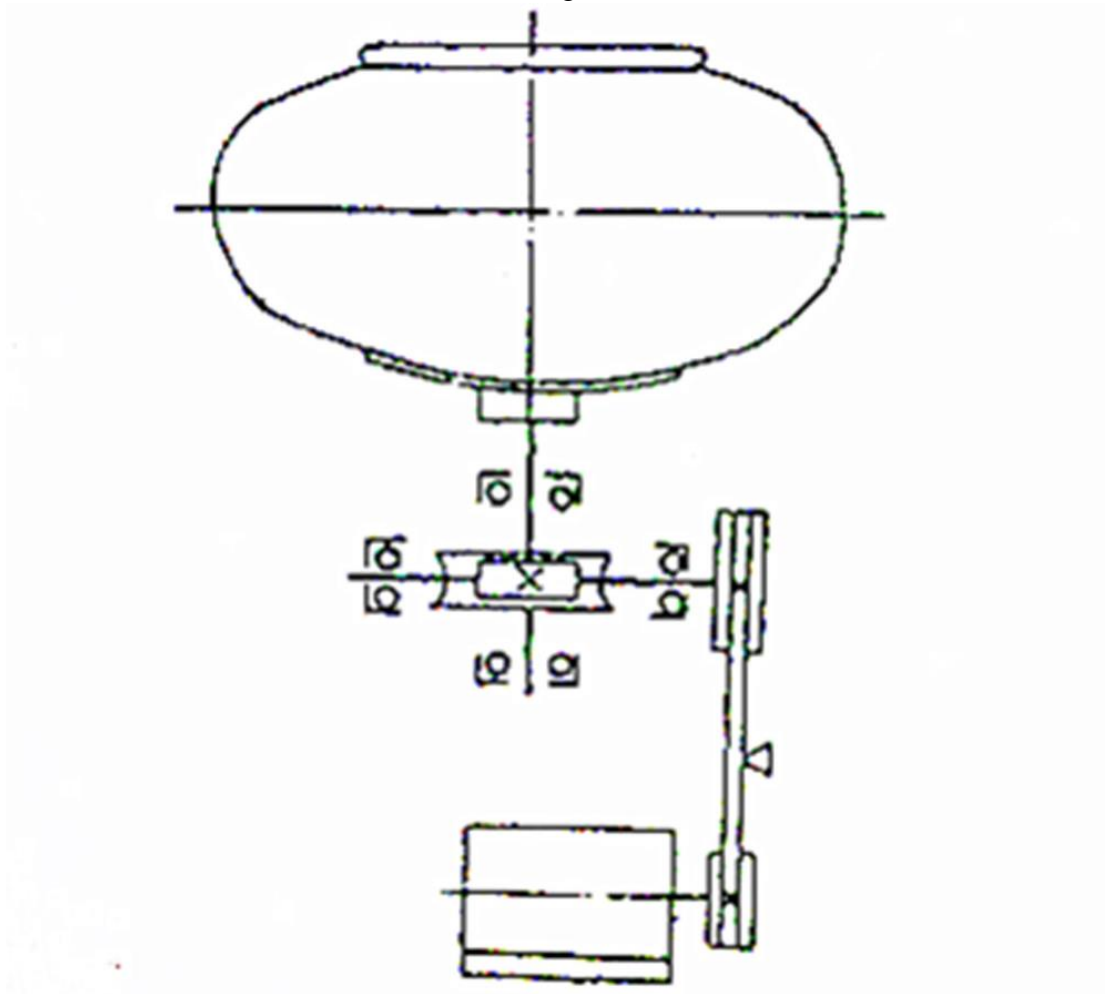
While the granulating pot rotates clockwise, material rolls in the pot and uniformly distributes on the chips. Blowing air to the pot to remove the surface moisture of material and make the quality product.

With the most reasonable pot type, stable linear speed, and ideal material curve flow, the granulator is capable of various- size granulating for different material. The material form is controlled by variable frequency motor.

Drawing of transmission principle



物流曲线示意图 (drawing of material flow curve)



传动原理 (transmission principle)

四、主要技术参数

4. Main technical specification

型号(model) 参数(item)	ZLJ-800	ZLJ-1000	ZLJ-1250
生产能力(capacity)	50kg/batch	70kg/batch	100kg/batch
锅直径 (pot dia.)	800mm	1000mm	1250mm
转速 (r.p.m)	固定 32-28 转分, 可调 10-40 转每分 Fixed speed:32-28r.p.m, adjustable speed:10-40r.p.m		
总功率 (total power)	3.35kw	3.75kw	5.55kw
鼓风机(blower motor)	250w	250w	350w
风加热 (air heater) (optional)	2000w	2000w	3000w
主电机 (main motor)	1.1kw	1.5kw	2.2kw
外形尺寸(size: L*W*H)	925*900*1500	1100*1100*1600	1250*1250*1700
重量 (weight)	230kg	250kg	310kg

五、设备安装及使用

- 1) 机器就位后必须安放平稳, 并用地脚螺栓固定
- 2) 开启注油盖给减速机加润滑油至油标线
- 3) 检查各部紧固件是否松动, 擦净锅体。
- 4) 将电器控制箱安装在干燥, 便于操作的一侧, 电源接通后应注意其相符, 使锅体按顺时针方向转动, 空转 2 分钟, 无异常后再投入工作。
- 5) 试车时检查机器是否有不正常杂音, 如果有, 立即停车检测
- 6) 机器倾角与装量和物料交换性能有关, 一般当装量适中, 锅体倾角为 30 ° 时, 生产效率及产品质量最好。
- 7) 加料后应按下主电机按钮, 同时再根据生产需要按下鼓风机按钮及电加热开关。

5. Installation and operation

- 1) The granulator must be put in flat and steady place, and fixed with anchor bolt.
- 2) Fill lubricant for reducer to the oil level.
- 3) Check to see if fastener is loose, and clean the pot.
- 4) Put the electric cabinet at dry and easy-operating side. After power switched on, should keep the pot rotating clockwise. After 2 minutes idling without any abnormal condition, the machine can be put into operation.
- 5) When commissioning, check the machine to see if there is abnormal sound. If any, should shut down immediately for inspection.
- 6) Pot angle and filling amount are related to material exchange performance. Productivity and product quality is optimum under proper filling amount and pot angle of 30 °.
- 7) After feeding, press the main motor button, and then press the blower motor button and electric heater button as needed.

六、设备保养

- 1) 应定期更换减速器润滑油和添加滚动轴承处润滑脂，润滑油可六个月更换一次。
- 2) 机器如较长时间不用应擦干净，锅体如果是铜质，应表面涂油，防氧化。
- 3) 检修电器应及时上好盖板，保证安全使用
- 4) 机器必须接地。
- 5) 不得随意拆除电气及皮带防护罩。

6. Maintenance

- 1) Regularly replace the reducer lubricant and bearing lubricating grease. Lubricant can be replaced every 6 months.
- 2) If the machine not used for long time, pot should be coated with oil to prevent from oxidation.
- 3) When perform electrical maintenance, should fasten the cover board for safety operation.
- 4) Machine must be grounded.
- 5) Do not disassemble electrical and belt protecting hood.