



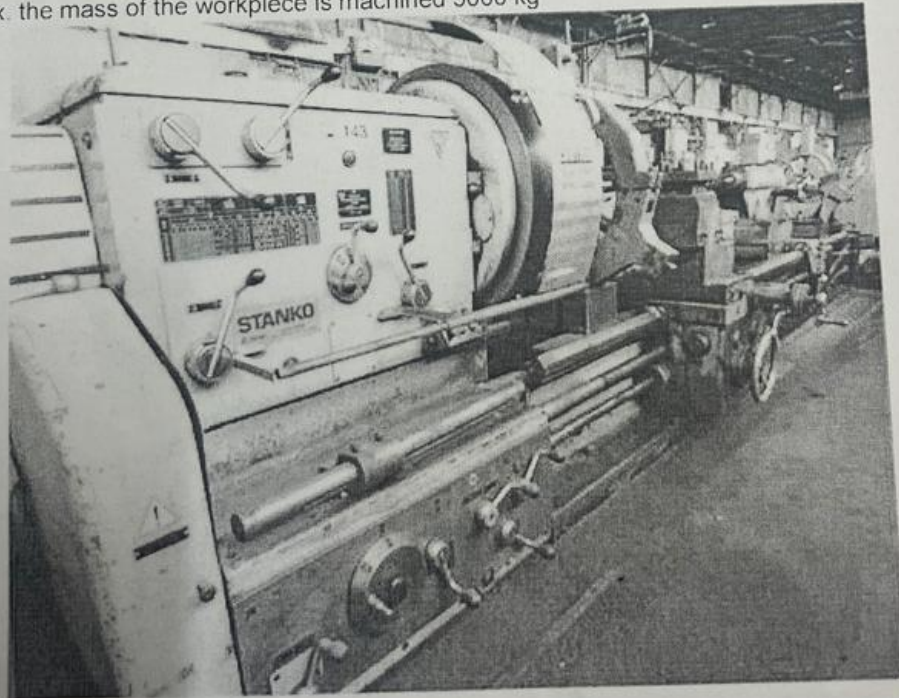






## Used Russia 1M65 HEAVY Lathe

Manufacturer Russia  
Model 1M65  
Year 1991  
Maximum length of workpiece 5000 mm  
Diameter of workpiece 1000 mm  
Number of spindle speeds 24  
Spindle speed 5 500 r / min  
Number 32 innings  
Feed, mm / rev:  
Longitudinal 0,20-3,05  
Cross 0,07-1,04  
Number of tapped:  
metric 44  
modular 37  
31 inch  
Step thread cutting:  
Metric 1-120 mm  
Modular module 0.5-30  
Inch, 28 threads per inch  
Max. the mass of the workpiece is machined 5000 kg



## **Specification:**

Work-piece maximum diameter:

- Above bed: 1000 mm
- Above support: 600 mm

Work piece maximum length: 5000 mm

Diameter of a cylindrical aperture in a spindle (not less): 85 mm

The end of a spindle in accordance with GOST 12595-72: 1-15M

Cutting tool height: 50 mm

Amount of speeds of a spindle: 24

Spindle speed: 5-500 rpm

Feeds count: 32

Feeds:

- Line: 0,20-3,05 mm/rev
- Cross: 0,07-1,04 mm/rev

The greatest force of cutting supposed by the mechanism of submissions:

- Longitudinal: 1200 kg
- Transverse: 780 kg

Step of a cut groove:

- Metric: 1-120 mm
- Modular: 0,5-30 module
- Inch: 28-1.4 threads/inch

Work-piece maximum weight: 5000 kg

Machine overall dimensions:

- Length: 5825 mm, 8050 mm
- Width: 2100 mm
- Height: 1760 mm

Machine weight: 15600 kg

spindle, mm 128

Spindle speed limits, rpm 5 - 500

The limits of steps of the cut threads:  
metric, mm 1 - 96 inches, threads / inch  
24 - 0.25 modular, module 0.5 - 24  
itches, pitch dia. 96 - 1

Accelerated movement of the support, m  
/ min: later 3 transverse 1

Requirement of the head drive, kW 15

The largest wag of blasted parts in the  
centers, kg 10000

Requirement of the head drive, kW 22

Masa, kg 15750 Dimensions: dovzhina,  
mm 8180, width, mm 2200 visota, mm  
1880

//