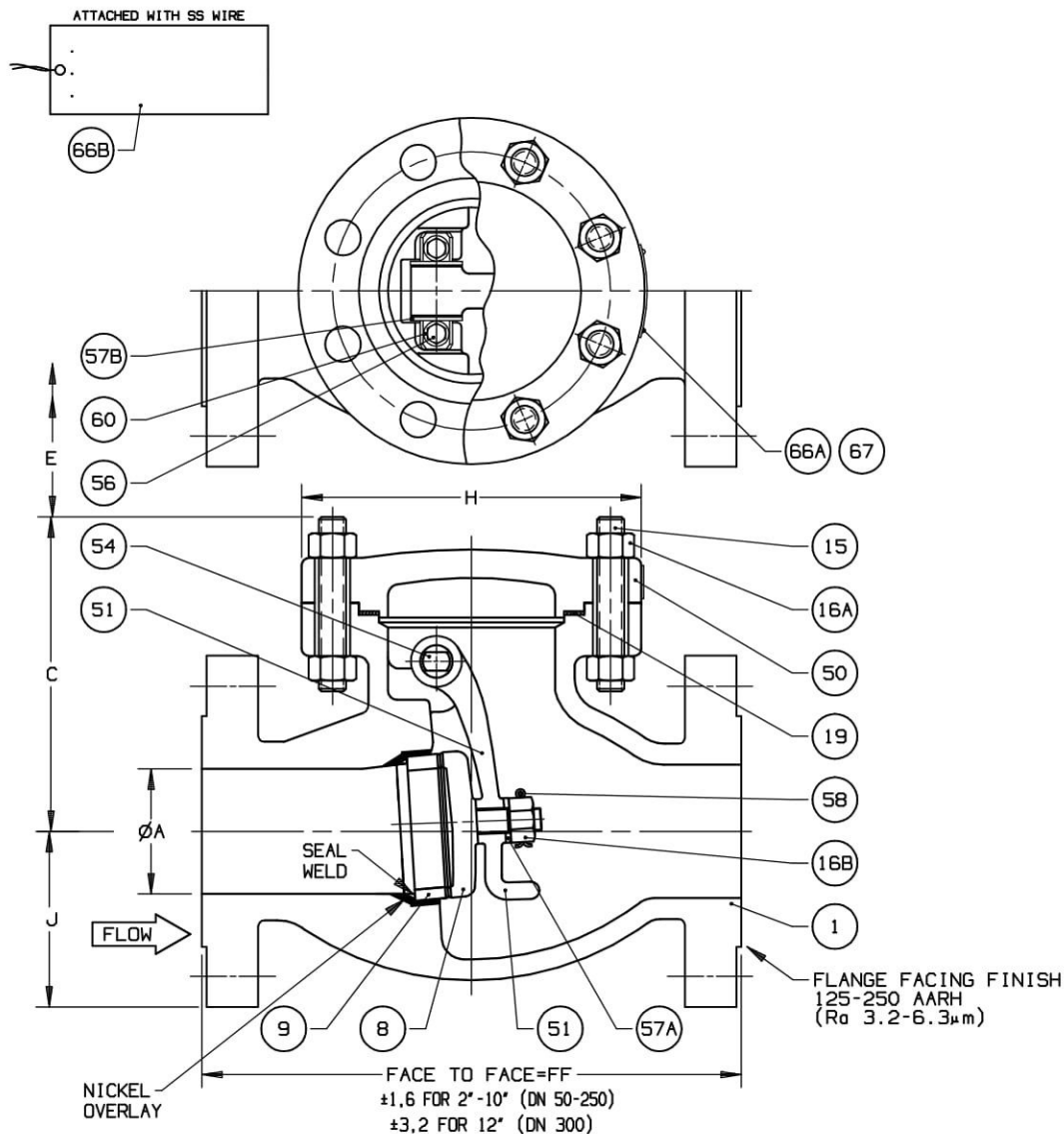


NPS	DN	ØA	FF	C	E	H	J	Kv	WEIGHT Kg	Velon Fig. No.
2"	50	51	267	151	51	172	83	81	20	F08-1114C-02HM-X240-U1
2 1/2"	65	64	292	160	64	172	95	128	25	F09-1114C-02HM-X240-U1
3"	80	76	318	194	76	216	105	187	41	F10-1114C-02HM-X240-U1
4"	100	102	356	214	102	260	127	349	63	F12-1114C-02HM-X240-U1
6"	150	152	445	284	152	318	159	808	117	F14-1114C-02HM-X240-U1
8"	200	203	533	346	203	400	191	1488	198	F15-1114C-02HM-X240-U1
10"	250	254	622	412	254	470	222	2380	285	F16-1114C-02HM-X240-U1
12"	300	305	711	457	305	521	260	3485	391	F18-1114C-02HM-X240-U1



MATERIAL LIST (02HM-300)					
PART	DESCRIPTION	QTY	MATERIAL	MATL SPEC	REMARKS
1	BODY	1	WCB	ASTM A216	
8	DISC (MFG. OPTION)	1	GR M-35-1	ASTM A494	
9	SEAT	1	MONEL 400	ASTM B164	UNS N04400
15	BODY/COVER STUD	-	GR B7M	ASTM A193	
16A	BODY/COVER NUT	-	GR 2HM	ASTM A194	
16B	DISC NUT	1	MONEL	ASTM B164	
19	GASKET	1	MONEL/GRAPHITE	SPIRAL WOUND	
50	COVER	1	WCB	ASTM A216	
51	HINGE LEVER	1	GR M-35-1	ASTM A494	
54	HINGE PIN	1	MONEL K500	AMS 4676	UNS N05500
56	HINGE PIN HHCS	2	MONEL	ASTM B164	UNS N04400
57A	DISC WASHER	1	MONEL	ASTM B127	UNS N04400
57B	WASHER	-	MONEL	ASTM B127	UNS N04400
58	COTTER PIN	1	MONEL WIRE	ASTM B164	
60	TAB WASHER	2	MONEL	ASTM B127	UNS N04400
66A	NAMEPLATE	1	SS	COMMERCIAL	
66B	TAG PLATE	1	SS	COMMERCIAL	OPTIONAL
67	RIVET	2	SS	COMMERCIAL	ALT. SPOTWELDED

NOTES:

- 1) VALVES DESIGNED IN ACCORDANCE WITH ASME B16.34 AND API 594 (MIN WALL TO API 594)
- 2) ALL VALVES PER THIS DRAWING ARE MANUFACTURED TO THE HF ACID REQUIREMENTS OF VEL-QCI-2622.
- 3) THESE VALVES ARE SPECIFICALLY DESIGNED FOR HF ALKYLATION SERVICE.
- 4) EACH VALVE WILL BE MARKED WITH A UNIQUE SERIAL NO.
- 5) FOR M35-1 MAXIMUM CARBON CONTENT IS 0.20%.
- 6) PERIPHERY OF ALL BODY-BONNET FLANGES WITH VOC-COMPLIANCE HF INDICATING POINT (YELLOW ON GUARD).
- 7) 100% X-RAY OF CRITICAL AREAS OF CASTINGS REQUIRED.

1	API 594	2017-11-15	EMB	FGA	
-	INITIAL ISSUE	2016-01-12	EMB	FGA	
REV	DESCRIPTION	DATE	DWN	APVD	IR CERT
CUST NAME		CUST ORDER NO			
UOP SPECS.:		(FLANGED ENDS) HF ACID SWING CHECK VALVE CARBON STEEL BODY			
HF-2, HF-20" M" & HF-5, HF-50" M"		NPS (DN) 2"-12" (50-300)	CLASS (PN)	300 (50)	
DRAWING NUMBER	F-1114C-02HM-U1(2-12)				REV. 1