



Vallero Drums

Ref :	2318297-1-AW
Condition :	Used
Manufacturer :	Vallero
Model :	-
Short Description :	Drums
Year(s) :	-
Quantity :	1
Location :	Seller or machines location: EUROPE (Western and Northern)
Last check :	21 Jul. 2022

Model : 3,0 x 2,0
Operating Voltage : 380V

Working dimensions
Diameter : 30000 mm
Width : 20000 mm

Detailed information
Condition : Used
Material : Plastic (Polypropylene/Fiberglass)
Process : All processes



DESCRIPTION

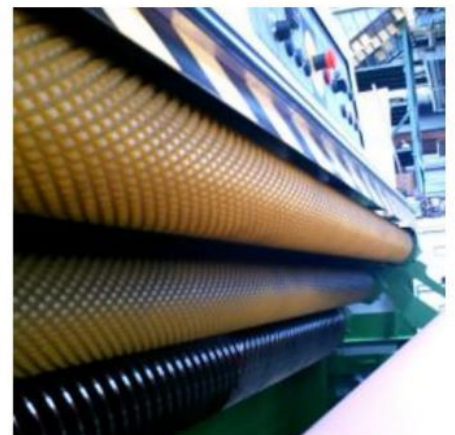
- Very robust and compact cast iron machine integrating on its frame the hydraulic unit and the electrical cupboard.
- Bladed roller made of forged steel XC48 for a rotation free of vibration.
- Powerful opening and closing device powered by rotary jack. Wide opening to make the feed-in of the leathers easier and increase the productivity.
- Double Grip roller with diamond shaped grooving powered by hydraulic motor. Hydraulic shock absorption system to not mark the skins.
- Carrier roller with motorized positioning and digital indication of the position in real time.
- Automatic protection of the bladed roller when opening the machine.
- Grinding device in reversed position (hanged grinding stone), more stable and reliable.
- All covers are made of stainless steel.



(wa_p_albums/p_album_j3n6958h0/j3n62x4saz20p4/pict0115.jpg)



(wa_p_albums/p_album_j3n6958h0/j3n62x4saz20p4/pict0113.jpg)

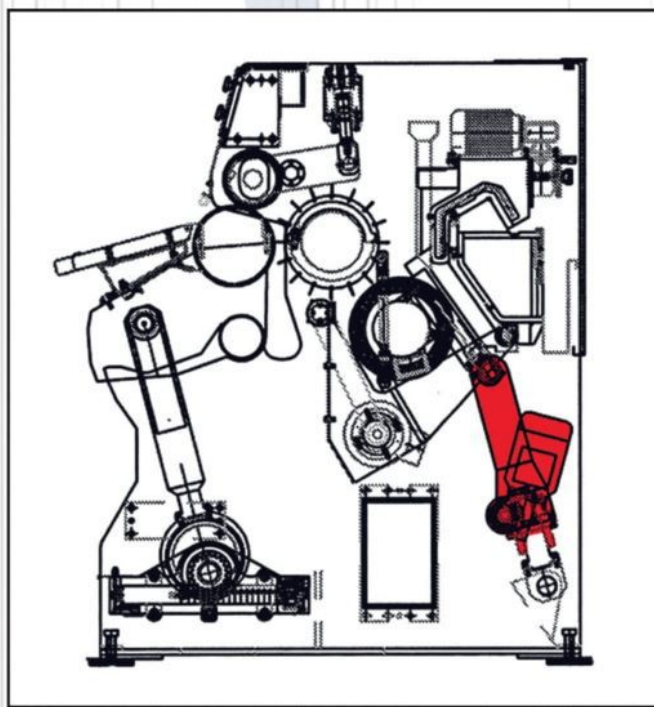


(wa_p_albums/p_album_j3n6958h0/j3n62x4saz20p4/pict0090.jpg)

RASATRICE UNIVERSALE . SHAVING MACHINES

BXR 25 · 30 · 32

BA-R 18 · 22



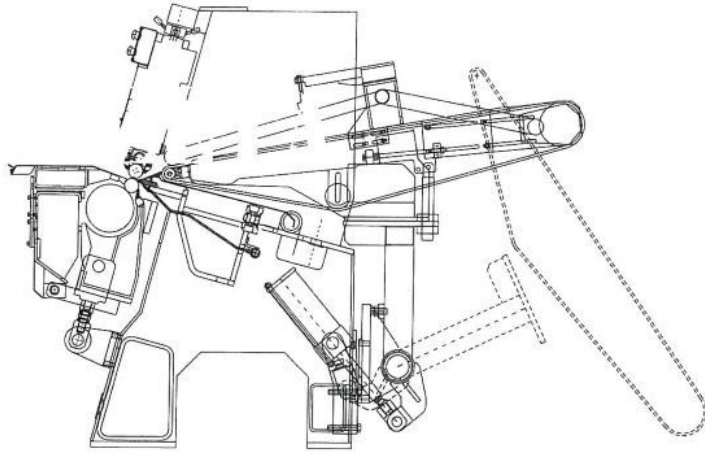
Sezione trasversale BXR 25-30-32 chiusa
Transversal cross-section BXR 25-30-32 (closed machine)

CARATTERISTICHE - MAIN FEATURES

Modello/Model		BA-R 18	BA-R 22	BXR 25	BXR 30	BXR 32
Larghezza di lavoro Working width	mm	1800	2200	2500	3000	3200
Potenza totale Total power	KW	54	64	86	86	86
Potenza motore lame Blade cylinder power	KW	45	45	75	75	75
Ingombro in pianta Overall dimensions	mm	3850x1390x1630	4250x1390x1630	4900x1680x1750	5400x1680x1750	5600x1680x1750

I dati tecnici e produttivi descritti nell'offerta e i colori delle macchine proposti non sono impegnativi e hanno valore indicativo. La ns. casa si riserva il diritto di variare, senza alcun preavviso, le caratteristiche delle macchine offerte o vendute senzache il cliente, in virtù di ciò, possa annullare ine.

The technical data as well as the production features described and the suggested colours of the machines in our offers have only indicative value and are not binding. Our company will have the un-censurable right to make all modifications it may think advisable to the offered machines or the sold up ones without leaving the customers any right to cancel the order for this.



RIZZI 11/14/15/16/17/18/19/20/21/22/23/24/25/26/27/28/29/30/31/32/33/34/35/36/37/38/39/40/41/42/43/44/45/46/47/48/49/50/51/52/53/54/55/56/57/58/59/60/61/62/63/64/65/66/67/68/69/70/71/72/73/74/75/76/77/78/79/80/81/82/83/84/85/86/87/88/89/90/91/92/93/94/95/96/97/98/99/100

 **Descrizione**

 **Description**

MOD.		ZETA 18	ZETA 24	ZETA 30	ZETA 33
Larghezza di lavoro <i>Working width</i>	mm	1800	2400	3000	3300
Motore comando pompa <i>Motor driving the pump</i>	KW	7,5	7,5	7,5	7,5
Motori comando lama (due) <i>Motors driving the blade (two)</i>	KW	5,5	11	11	11
Motori affilatori (due) <i>Grinding Wheel motors (two)</i>	KW	4,5	4,5	4,5	4,5
Ingombro in pianta <i>Overall dimensions</i>	mm	1470x5400x1830	1470x6000x1830	1470x6600x1830	1470x6900x1830

I dati tecnici e produttivi descritti nell'offerta e i colori delle macchine proposti non sono impegnativi e hanno valore indicativo. La casa si riserva il diritto di varare, senza alcun preavviso, le caratteristiche delle macchine offerte e vendere senza che il cliente, in virtù di ciò, possa annullare l'ordine.
The technical data as well as the production features described and the suggested colours of the machines in our offers have only indicative value and are not binding. Our company will have the un-cessurable right to make all modifications it may think advisable to the offered machines or the sold up ones without leaving the customers any right to cancel the order for this.



RIZZI SpA

Sede Legale: Via Berardo Maggi, 3/D - 25100 Brescia - Italia

Stabilimento (commerciale, produzione e amministrazione)

Via Finlandia, 81 - 41100 Modena - Italia - Tel. +39 059 3162911 - Fax +39 059 315461 - rizzi@rizzi.it - www.rizzi.it

**TECNOLOGIA
BACK TO BACK**

**BACK TO BACK
TECHNOLOGY**

**TECNOLOGÍA
BACK TO BACK**



09

sm xii

IT
È prevista la soluzione con due unità in abbinamento ('back to back'), per consentire la lavorazione in continuo.

EN
There is also the possibility of two units being positioned in a 'back to back' operation for continuous production.

ES
Está prevista una solución con dos unidades acopladas ('back to back'), para permitir el funcionamiento continuado.

IT
Spaccatrice **D**

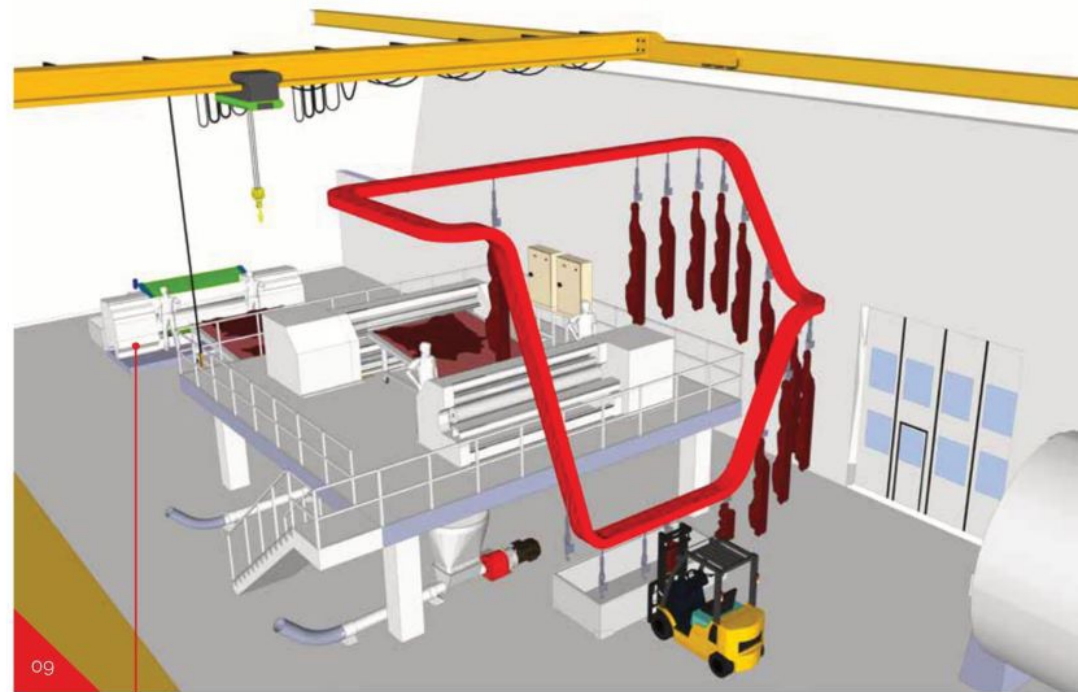
EN
Splitting machine **D**

ES
Máquina divisora **D**

SCARNATRICE BACK TO BACK
Divisione della linea automatica

FLESHING BACK TO BACK
Splitting automatic line

DESCARNADORA BACK TO BACK
División de línea automática

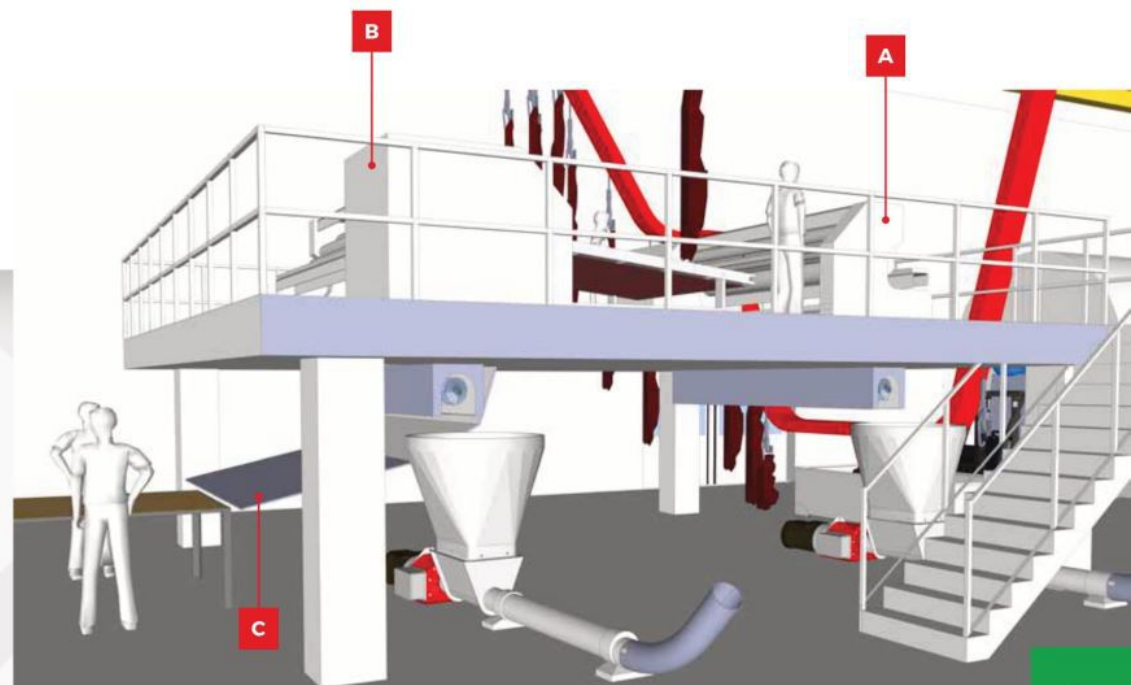


09

D

B

A



C