

HBC 975

HBC 975 is a safety device, also called slam shut valve, suitable to quickly interrupt the gas flow when the pressure reaches a calibration set value.

This device is mainly used in high-pressure transmission systems and in medium pressure gas distribution networks.



Gas compression /
booster stations



Gas reverse-flow



Power generation



Gas liquefaction



LNG marine
transportation



Heavy industry



Gas storage



Regasification



District stations



City gates

Features	Values
Design pressure*	up to 10.2 MPa up to 102 barg
Ambient temperature*	from -20 °C to +60 °C from -4 °F to +140 °F
Inlet gas temperature range*	from -20 °C to +60 °C from -4 °F to +140 °F
Available Accessories	Limit switch, remote tripping
Maximum inlet pressure	10 MPa 100 barg
Accuracy class AG	up to 2.5 for OPSO (depending on working conditions) up to 2.5 for UPSO (depending on working conditions)
Over pressure setting range (OPSO)	from 0.02 MPa to 9 MPa from 0.2 barg to 90 barg
Under pressure setting range (UPSO)	from 0.02 MPa to 9 MPa from 0.2 barg to 90 barg
Nominal dimensions DN	DN 100 / 4"; DN 150 / 6"; DN 200 / 8"; DN 250 / 10"; DN 300 / 12"
Connections*	ANSI 150, 300 and 600 according to ASME B16.5 and PN 16 according EN 1092
End to end dimensions	according to EN 334, EN 14382

(*) REMARK: Different functional features and/or extended temperature ranges available on request. Stated temperature ranges are the maximum for which the equipment's full performance, including accuracy, are fulfilled. Standard product may have a narrower range.

Table 1 Features

Materials and Approvals

Part	Material
Body	Cast steel ASTM A 352 LCC for classes ANSI 300 and 600; Cast steel ASTM A 216 WCB for classes ANSI 150 and PN 16
Stem	AISI 416 stainless steel
Plug	ASTM A 350 LF2 Nickel coated
Valve seat	Carbon steel + vulcanized rubber
Sealing ring	Nitrile rubber
Compression fittings	Zinc-plated carbon steel according to DIN 2353; Stainless steel on request

REMARK: The materials indicated above refer to the standard models. Different materials can be provided according to specific needs.

Table 2 Materials

HBC 975 slam shut valve is designed according to the European standard EN 14382. The product is certified according to European Directive 2014/68/EU (PED). Leakage class: bubble tight, better than VIII according to ANSI/FCI 70-3.











EN 14382



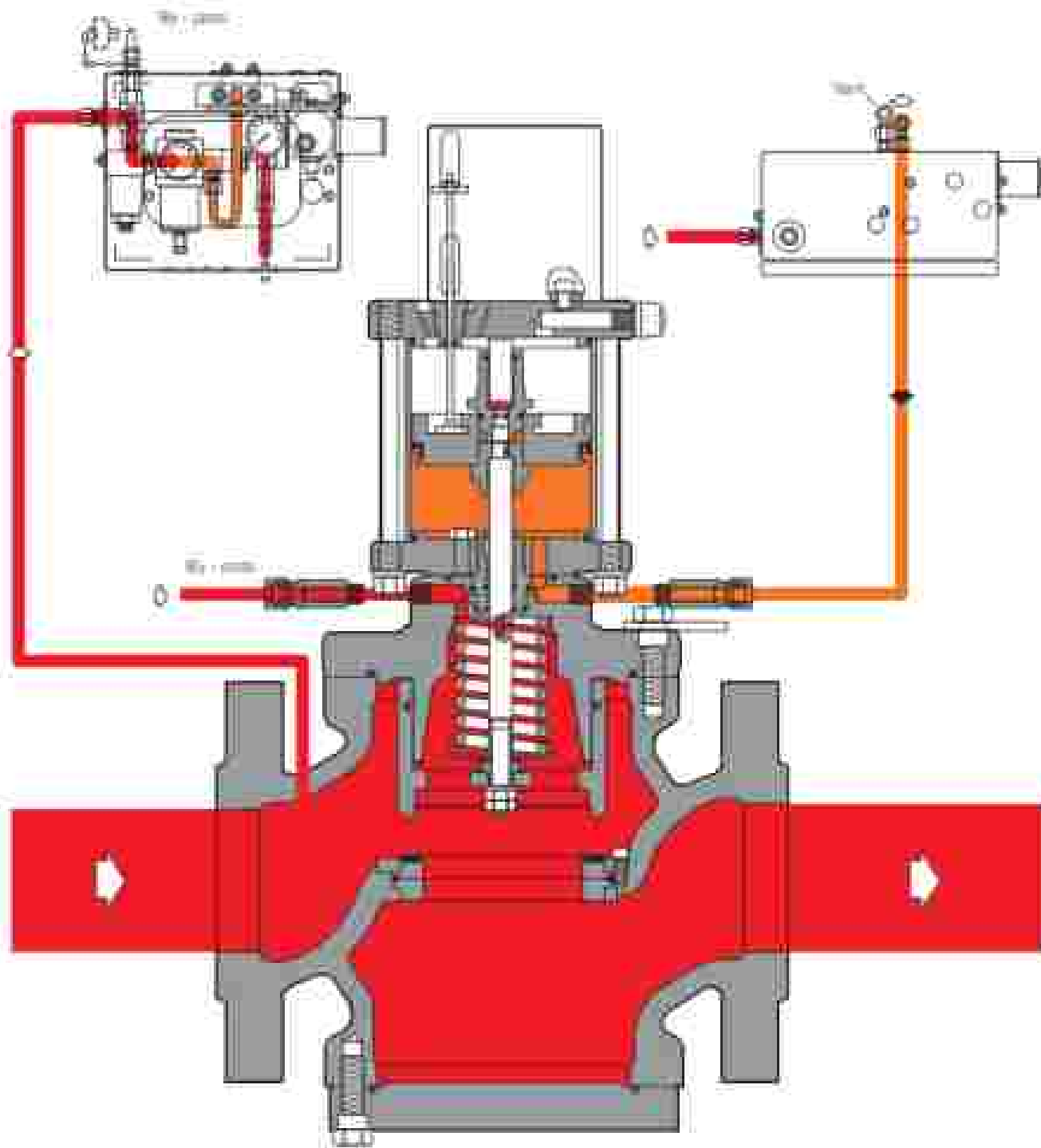
PED-CE

HBC 975 competitive advantages

-  Over Pressure Shut-Off
-  Under Pressure Shut-Off
-  Internal by-pass
-  Push button for tripping test
-  Top Entry
-  Compact dimensions
-  Easy maintenance
-  Remote tripping option
-  Limit switch option
-  Biomethane compatible and available with specific versions for full Hydrogen or blending

VALVOLA DI BLOCCO
 SLAM-SHUT VALVE
 SICHERHEITSABSPERRVENTIL
 VANNE DE SECURITE
 VALVULA DE BLOQUEO
 VALVULA DE BLOQUEIO

HBC 975



■ Pressione di alimentazione / Fed pressure
 Druckschubkraft / Pression d'alimentation
 Pressão de alimentação / Pressão de alimentação



■ Pressione di comando / Control pressure
 Steuerdruck / Pression de commande
 Pressão de comando / Pressão de comando