

5.2 A/C Outlet Air Pipe Ass'y

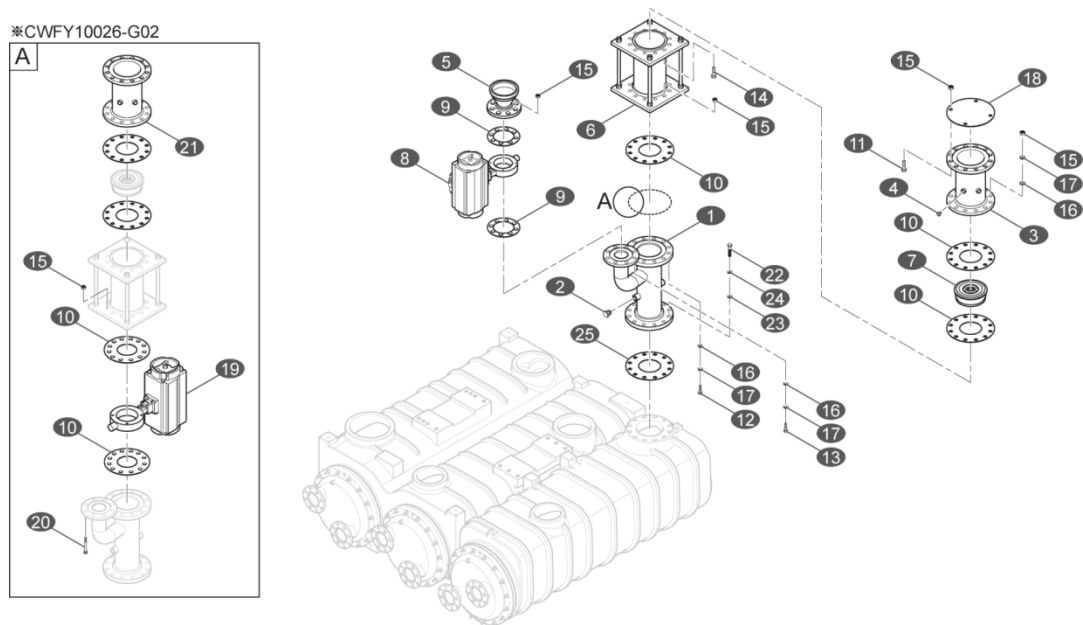


Fig 5.3 A/C Outlet Air Pipe (Type 1 & 2)

Fig	Index	Part No	Part Name	Spec	QPA
5.3	-	-	A/C OUTLET AIR PIPE ASS'Y	-	1
	1	CWFY10026-01	A/C OUTLET AIR PIPE	-	1
	2	CST92008-01	PLUG	PT1/2"	2
	3	CWFY10016-02	DISCHARGE CONNECTOR	-	1
	4	CST92008-01	PLUG	PT1/2"	2
	5	CWFY10016-03	CONNECTOR	SILENCER	1
	6	CST83001-31	DISCHARGE EXPANSION JOINT	JIS, 16K	1
	7	CST83031-G44	DISCHARGE CHECK VALVE	TYPE-1/2	1
	8	HP14-000155A	B.O.V	-	1
	8-1	HP09-002220A	POSITIONER	IF APPLICABLE	1
	8-2	HP09-002216A	PNEUMATIC ACTUATOR	IF APPLICABLE	1
	8-3	HP09-002218A	AIR REGULATOR	IF APPLICABLE	1
	8-4	HP14-002445A	VALVE ASSY	IF APPLICABLE	1
	9	CST14006-10	RING GASKET	5", 16K	2
	10	CST14006-12	RING GASKET	8", 16K	3
	11	CST90001-78	HEX BOLT	M22 X 50L	12
	12	CST90014-29	HEX BOLT	M22 X 100L	12
	13	CST90001-64	HEX BOLT	M22 X 160L	8
	14	CST90001-72	HEX BOLT	M22 X 240L	12
	15	CST90004-24	HEX NUT	M22	36
	16	CST94001-30	FLAT WASHER	M22	64