



GUIKUANG

桂矿

优质·创新 诚信 双赢

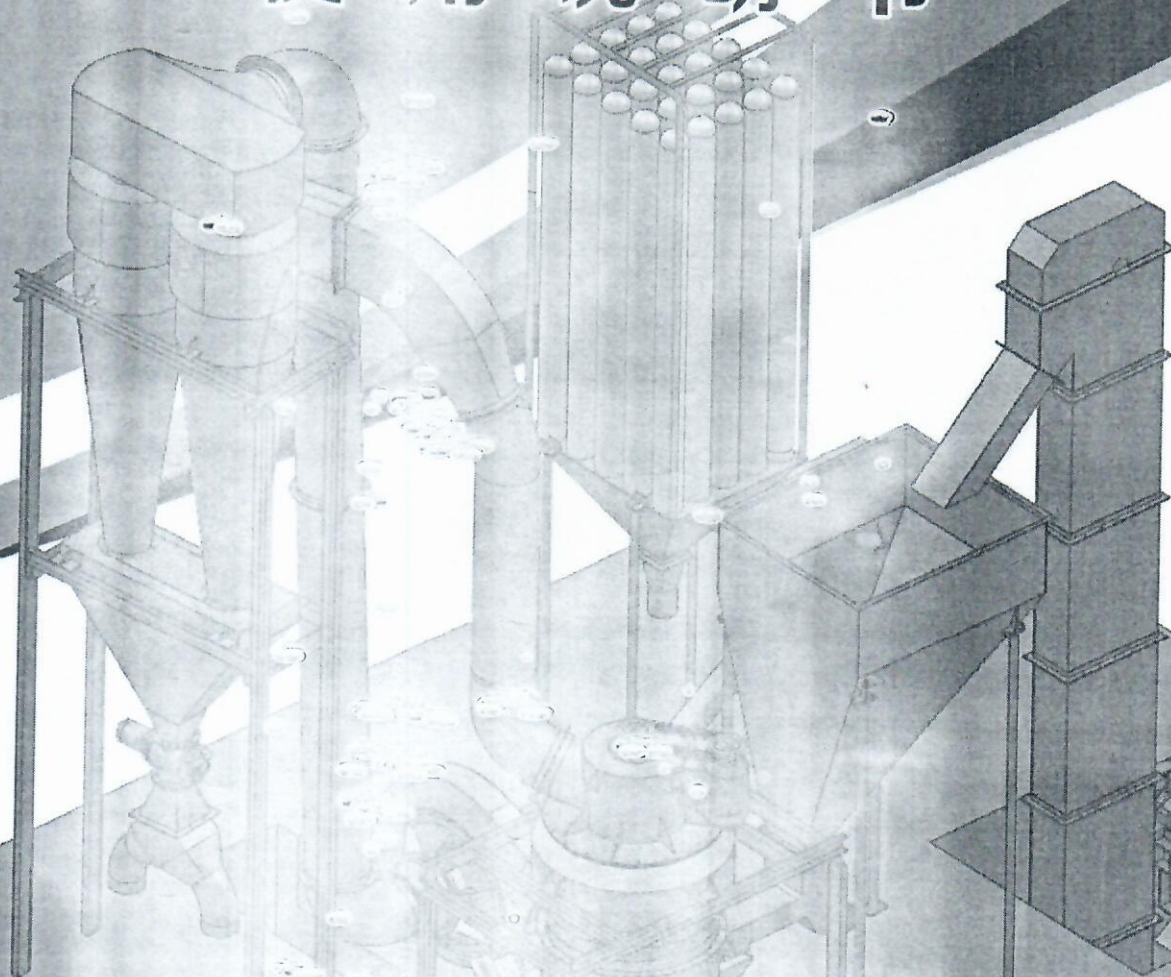


扫二维码进入公司网站

通过 ISO 9001: 2008 国际质量体系认证

4R3220C 摆式磨粉机

使用说明书



桂林矿山机械有限公司

(广西壮族自治区桂林矿山机械厂)

GUILIN MINING MACHINERY CO.,LTD

4R322C Improved Pendulum Pulverizer

I. Applications

4R3220 Improved pendulum pulverizer is mainly used in chemical and building material industry and such as grinding glass, rubber, pesticides, enamel, paint, phosphate fertilizer, paper. Hardness below seven Moh's hardness following humidity below 6% non-flammable and explosive materials. Such as: talc, barite, calcite, limestone, marble, manganese ore, iron ore soil, chrome ore, feldspar, quartz, gypsum, kaolin, bentonite, etc.

This machine has the advantages of high output, wide use, power saving, convenient operation and stable performance. It is an ideal equipment for grinding industry.

Meanwhile, this Machine is Specifically Produced in line with China Gypsum Industry Quality Concerns which is more than 20 years being ordered due to following advantages;

- a. Producing Mesh 200 exactly
- b. Keeps Product Specification in High Quality Standard demand less to add additive
- c. Meet China Market Gypsum Requirement specially for Ceramic Mold Powder
- d. Coupled with adjusted and suitable fast Packing Nuzzles which can duly fill each minute between 15 to 25 bags without breaking bags due to air pressure and fully meet requirement of grinding system behind it.

II. Chief Technical Specifications

1. Mainframe

- (1) Max feed size 20mm
- (2) Finished Size Mesh 200 (0.044~0.125mm)
- (3) Output (based on different raw material fineness in line with JB / t4084-2007)

standard output)	20 t/h
(4) Central axis speed	140 r/min
(5) Grinding ring inner diameter	970mm
(6) Roll grinding size(Outer diameter×Height)	320×200mm

2. Turbine Classifier

Turbine grading impeller diameter	Φ894mm
-----------------------------------	--------

3. Blower

(1) Blower fan rotating speed	1850 r/min
(2) Wind volume	15433~24308 m ³ /h

(3) Wind pressure 7400~6300Pa

4. Elevator

Lifting height 5800mm

5. Type GZ2F Electromagnetic Vibrating Feeder

(1) Power 150w

(2) The feeding 0~25t/h

6. PE—150A Jaw Crusher

(1) Inlet size 150mm×250mm

(2) Discharge port size 10mm~40mm

7. Overall Unit

(1) Dimensions after installation (L × W × H) 7890×5023×8370mm

(2) The total weight 14t

(3) The total power 105.65kw

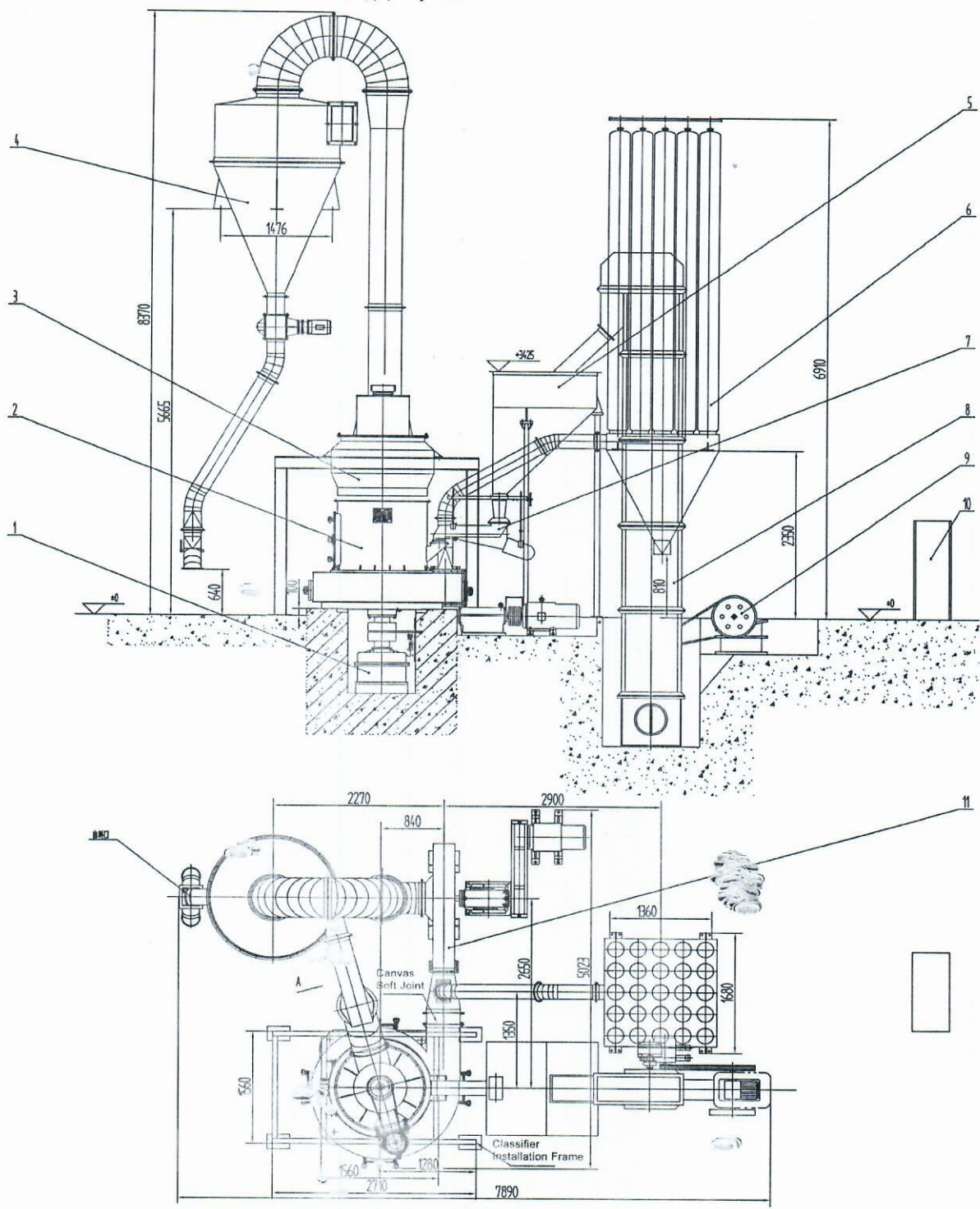
8. Motor

Unit with Motor	Motor model	Power (kw)	Speed (r / min)
Host-mainframe	Y225M-4	45	1480
Classifier	Y160L-4	15	125~1250
Blower	Y225S-4	37	1480
Bucket Elevator	Y100L2-4	3	1420
Jaw Crusher	Y132S-4	5.5	1440

9. Packing Machine Joint with Raymond Mill

Two Nuzzle Packing Machine Fabricated with above mentioned system of Raymond Mill Fixed and Assembled for Fast and Suitable Packing of Product

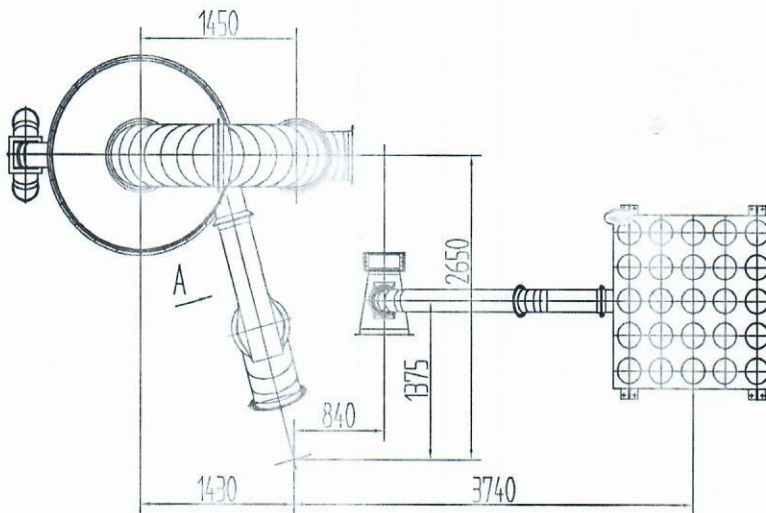
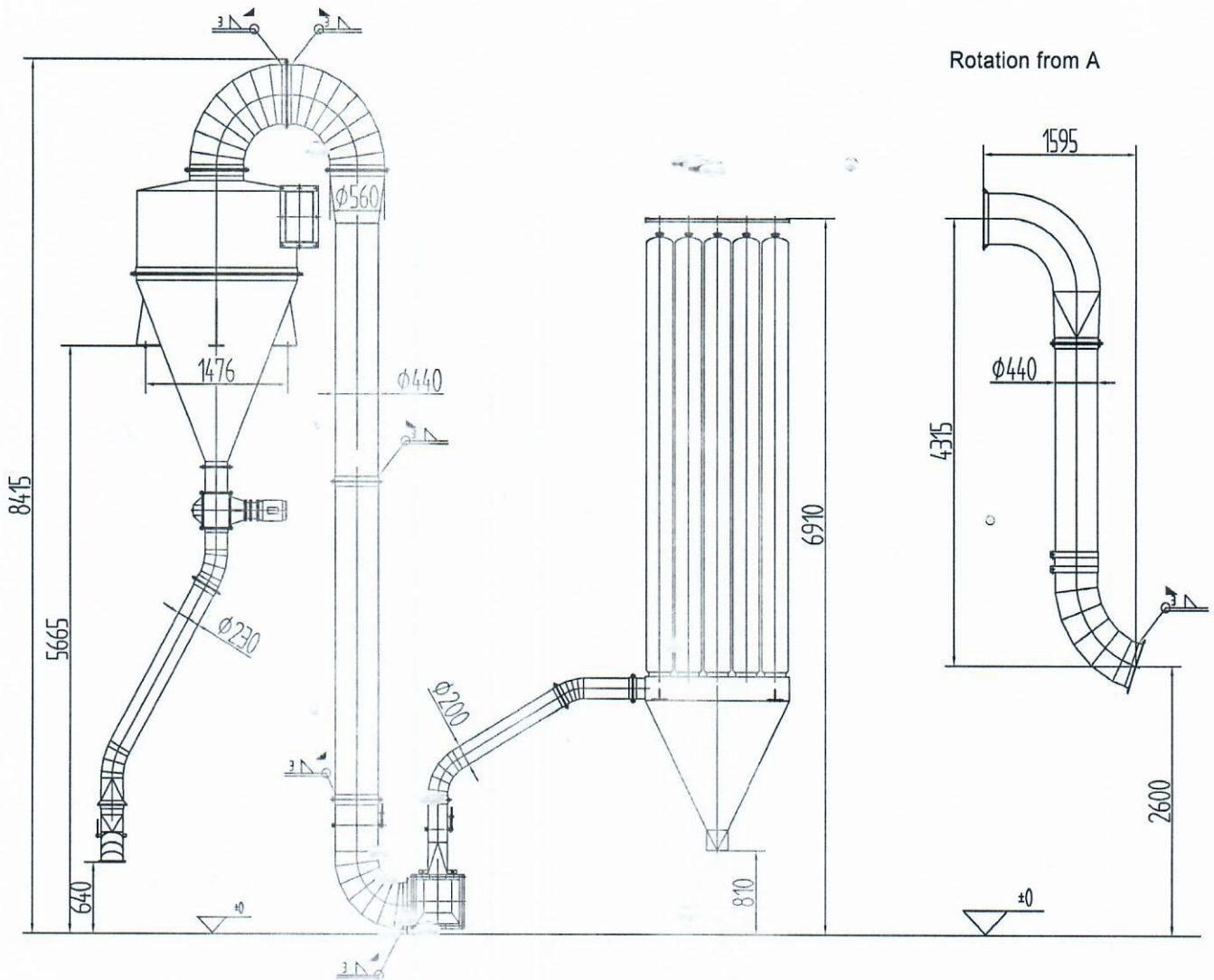
Nuzzles: 2 Nuzzles
Weight Adjustment: from 20 to 70 kg each bag
Bag Filling System: Combination of Air and Screw Conveyor depends on Product
Speed: from 15 Bags to 25 Bags per minute from each Nuzzle
(Depends on adjustment)



6	JC25	Simple Bag Filter			
5	K4804.5	Storage Hopper	11	9-26m9C	Centrifugal Blower
4	4R3220.3C	Pipeline System	10	K4804.8	Electric control cabinet
3	4R3220.2	Turbine Classifier	9	PE-150A	Jaw Crusher
2	4R3220.1	Mainframe	8	K4804.4	Bucket Elevator
1	K4804.1.1	Reducer	7	GF2F	Electromagnetic Vibrating Feeder

Fig.1 Outline Drawing of 4R3220 Pulverizer

The Power Inlet without Pipe System



Note:

1. The pipeline system is provided for the user's reference during installing.
2. The user can make changes to the pipeline system according to the actual needs, but it should be verified i capacity of the fan.
3. Easily for installation, some pipe flanges are only welded at one end and the other end should spot welding before leaving factory when it finished in site installation.
4. Asbestos rope should be padded between flanges during installation to prevent from air leakage.

Fig.2 Pipeline System