

Carbonation, Filling and Capping – FT102XA**FT
SERIES**

This FT102XA has many new updates including:

- ▶ Reduced minimum batch volumes
- ▶ Ability to carbonate highly foaming products
- ▶ Internally mounted chiller to reduce space requirement in your laboratory

Other updates include the ability to have a twin filling and capping station on the same unit, measuring the Dissolved Oxygen and CO₂ directly.

**RAPID CARBONATION AND FILLING
INTEGRAL CAPPING AND SEAMING HEAD OPTIONS**

Filling soft and alcoholic beverages into PET, bioplastic, glass and cans with screw capping, crown capping and now an integral can seamer.



Pressure control gauges



Filling & capping heads



Filling control & syrup dosing

Description

The FT102XA is the latest in high accuracy carbonation and filling technology. You can carbonate a premixed product or water and syrup in a post mix configuration.

Filling soft and alcoholic beverages into PET, bioplastic, glass and cans with screw capping, crown capping and now an integral can seamer.

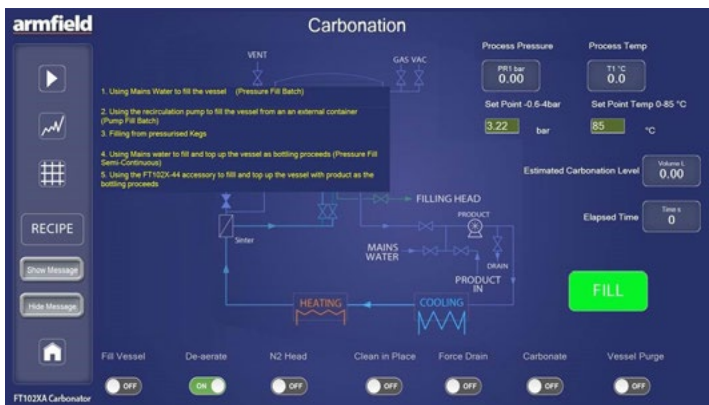
Features / benefits

Features

- ▶ Accurate carbonation levels in excess of 12g/l ($\pm 0.1g/l$)
- ▶ Cans, PET and glass bottle filling
- ▶ Screw, crown, rip-cap and ROPP capping
- ▶ Can seaming
- ▶ CO₂ recycling for environmentally friendly processing
- ▶ Deaeration
- ▶ Vessel purging
- ▶ New vacuum system compatible with high foaming products
- ▶ In-bottle pressure measurement
- ▶ Pre-mixing and post-mixing capability
- ▶ Syrup dosing into the bottle
- ▶ ArmBUS control system with 32 process recipes and flexibility of computer control over PLC control
- ▶ Full data capture through ArmBUS data viewer (exportable to Excel)
- ▶ Twin filling head option available

Benefits

- ▶ Reduced movement of bottle increases the accuracy and reliability of carbonation
- ▶ On-board high efficiency chiller reduces space required in laboratory
- ▶ Removable side panels and IP65 electrical cabinet for easy access to internal components and spray down when required
- ▶ Can operate as standalone unit or with the continuous feed vessel FT102XA-44
- ▶ No need for an external chiller or ice water supply



Overall dimensions

Length	1.2m
Width	0.80m
Height	1.75m

Packed and created shipping specifications

Volume	3.2m ³
Nett Weight	410kg
Gross Weight	500kg

Technical specifications

Gas content	0-12 g/l
Vessel capacity	15 litres or 30 litres working capacity
Capping Methods	Screw, Crown, Can Lid, ROPP, Rip-Cap
Gases	CO ₂ , N ₂ or any safe, non-flammable alternatives or mixture
Contact surfaces	316L stainless steel, food grade silicone, PTFE, borosilicate glass and other food safe materials
Operation methods:	Batch or Semi-continuous
Minimum batch volume:	1 - 3 litres (<i>depending on vessel volume</i>)
Maximum vessel pressure:	4 bar

Requirements

Scale



- ▶ **Electricity** - FT102XA-A: 230V 50Hz 25A (one socket required)
FT102XA-G: 230V 60Hz 16A and 110V 60Hz 8A
- ▶ CO₂ supply with manual regulator, 6 bar
- ▶ Nitrogen supply with manual regulator, 6 bar (if used)
- ▶ Compressed air supply with manual regulator, 6 bar
- ▶ Water for chiller on commissioning
- ▶ Drainage

Accessories

- ▶ Screw capping head
- ▶ Crown capping head
- ▶ Can seaming head
- ▶ PET bottle neck support
- ▶ Additional centering rings
- ▶ Syrup dosing
- ▶ Hot filling
- ▶ Continuous operation capability
- ▶ Deaeration
- ▶ At-line oxygen sensor
- ▶ At-line CO₂ measurement

Related products

- ▶ [FT140X: Upstream mixing vessel](#)
- ▶ [FT74XA: HTST and UHT system](#)
- ▶ [FT174X: HTST and UHT system](#)
- ▶ [FT110X: Benchtop Solvent Extraction system](#)
- ▶ [FT111X: Solvent Extraction system](#)

Ordering codes

- ▶ FT102XA-15-A
- ▶ FT102XA-15-G
- ▶ FT102XA-30-A
- ▶ FT102XA-30-G

Armfield standard warranty applies with this product

Knowledge base

- > 30years expertise in industrial R&D technology
- > 60 years providing engaging engineering teaching equipment

Benefit from our experience, just call or email to discuss your laboratory needs, latest project or application.

An ISO 9001 Company



Products CE certified

armfield.co.uk

Aftercare

Installation
Commissioning
Training
Service and maintenance
Support: armfieldassist.com