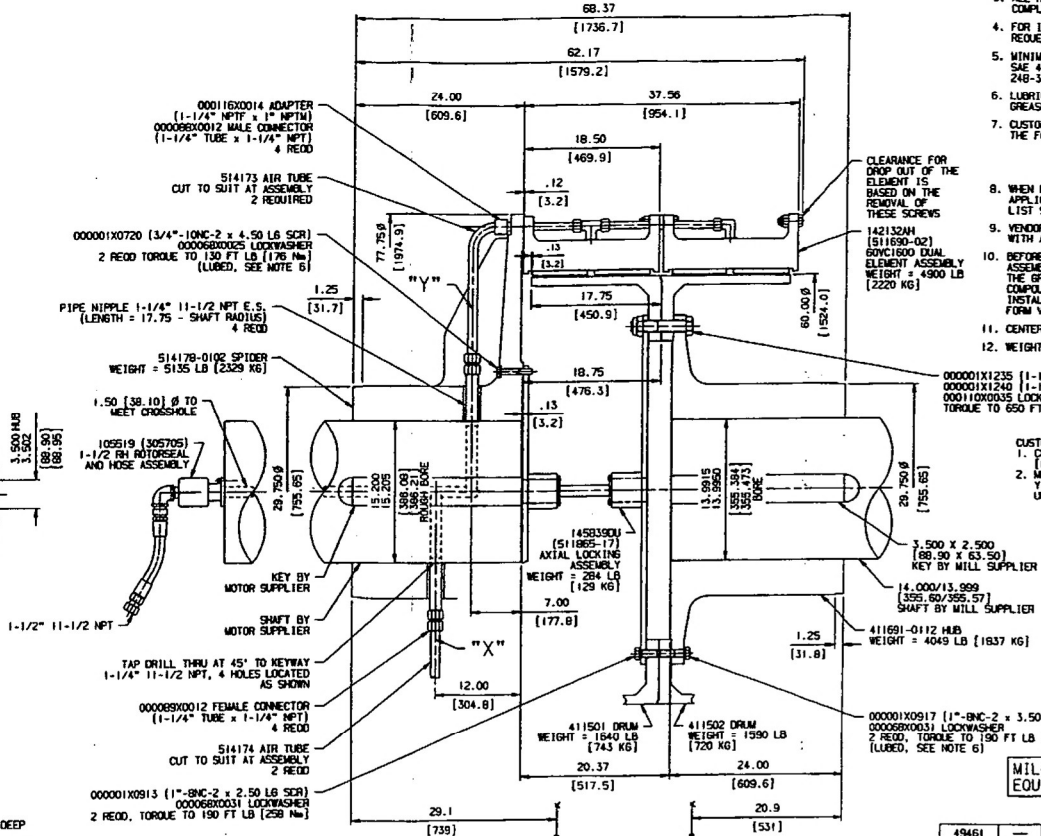


END VIEW OF SHAFT
SHOWING DIMENSIONS FOR
MOUNTING ROTOR SEAL
SCALE = NONE



- CLUTCH RATED TORQUE = 4,366,000 LB. IN. AT 75 PSI (493,000 Nm AT 5.2 BAR). (EXACT TORQUE RATING IS DEPENDENT UPON APPLIED AIR PRESSURE AND OPERATING SPEED).
- EATON WARRANTIES ARE VOID IF THESE SPECIFICATIONS ARE EXCEEDED. EATON ACCEPTS NO RESPONSIBILITY AND EXTENDS NO WARRANTY UNLESS IT HAS APPROVED ANY VARIATION IN ADVANCE.
- ALL ROTATING EQUIPMENT MUST BE PROTECTED TO COMPLY WITH OSHA STANDARDS.
- FOR INSTALLATION, OPERATION AND MAINTENANCE, REQUEST FORM: VC5001.
- MINIMUM RECOMMENDED SHAFT MATERIAL TO BE SAE 4140/4142 ALLOY ROUND, HEAT TREATED TO 240-321 BRINELL.
- LUBRICATE WITH SAE 30 OIL OR MOLYBDENUM DISULFIDE GREASE.
- CUSTOMER TO MOVE SHAFTS .25 (6.4) APART TO PROVIDE THE FOLLOWING CLEARANCE FOR DROP OUT:
ELEMENT = .38 (9.7)
DRUM & AX-LKG ASSY = .13 (3.3)
- WHEN REQUESTING INFORMATION, ALWAYS IDENTIFY THE APPLICATION BY THIS DRAWING NUMBER, THE MATERIAL LIST SHOWN AND AIRFLEX SALES ORDER NUMBER.
- VENDOR'S PART NUMBERS SHOWN MAY BE SUBSTITUTED WITH AN EQUIVALENT ALTERNATE.
- BEFORE SHIPPING, THE BEARINGS OF THE AXIAL LOCKING ASSEMBLY ARE FULLY PACKED WITH GREASE BY AIRFLEX. THE GREASE USED IS AMS/OIL MULTI-PURPOSE MOLYBDENUM SYNTHETIC NO. 2 EP GREASE. FOR INSTALLATION AND REPACKING OF BEARINGS, REFER TO FORM VC5001.
- CENTERS OF GRAVITY BASED ON SPECIFIED BORES.
- WEIGHT = 14,918 LB (6,767 KG) APPROX.

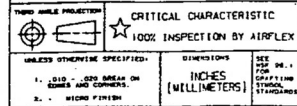
CUSTOMER NOTES:
1. CLUTCH TORQUE = 5,821,333 LB. IN. AT 100 PSI (657,333 Nm AT 7.0 BAR)
2. MOTOR SHAFT MATERIAL IS AISI 1045 STEEL
YIELD STRENGTH..... 37,500 PSI
ULTIMATE STRENGTH..... 75,000 PSI

CERTIFIED PRINT
EATON CORPORATION
AIRFLEX PLANT
CLEVELAND, OHIO
P.O. NO. 10045555
CUST. REP. 5050334 P.T.
FILE NO. 57590/1
DATE 11-17-99
SIGNED *Thomas Chen*

MILL SUPPLIER... #85-340D66044
EQUIPMENT..... #E1-30-2110-01

Plant: Sar Chashneh Expansion Project Phase 1
Equipment Tag No: E1-30-2110-01
Equipment Name: 32 x 18" FF Shop MTR
Equipment Supplier: Svecchia Industries Canada Inc.

DO NOT SCALE THIS DRAWING



UNLESS OTHERWISE SPECIFIED:
1. DIM. - STD. UNLESS SHOWN OTHERWISE
2. SURF. FINISH - [Symbol]
DIMENSIONS IN INCHES (MILLIMETERS)
SEE FIG. 1 FOR DEPT. OF EXTRUSION STANDARDS

49461	---	---	RELEASE	11-17-99	---
AUTH. NO.	LTR.	ZONE	CHANGE	BY & DATE	CHNG.
FATON Airflex					
60VC1600 DUAL CLUTCH APPLICATION (VC-510) WITH LOCKING ASSEMBLY FOR USE ON 32"x16" SAG WILL WITH DUAL 5500 HP DUAL MOTORS					
MATERIAL			SEE DETAILS		
DATE FROM					
DRWN	10 09-01-99	CHECKED	SG 11/15/99	APPR	
ISSN	99185	REV	80	57590/1	LA-11001
MATERIAL CODE	SCALE 1/2"		NEXT ASSY.	PART NO. 104749U	

02-0023 0027