



**INTIMAC s.r.l.**

---

**For Cartridge**

**PROPOSAL FOR LIQUID FILLER AND CAPPER  
FOR GLASS CARTRIDGE**

Presented by:

**INTIMAC S.R.L.**

**Intimac filling and capping monobloc model “Intiblock Bottles ” 4 Filling unit & 1 double bottom insertion and 1 capping with 2 heads**



**INTIMAC s.r.l.**

*The line will handle the following components:*

**Products:** Liquid solutions aqua type

**Filling Volume:** 1 - 5 ml

**Bottle Size:**

To be defined

**Closures:** 1 alu cap and bottom stoppering

**OUTPUT:** 6.000 bottles per hour (3 ml ) mechanical output depending on product  
Product density light ( light % viscous )

## **Machine Description**

**This is a monobloc intermittent motion machine running at double pitch ( 2 cartridge per time).**

**N° 4 volumetric pumps complete with No. 4 dosing needles**

**Machine accept 1 cartridge size , one stoppering and one cap size.** This means that all parts necessary to handle these elements are included in the machine basic price.

**One additional cartridge and caps change-over sets necessary for this machine are optional.**



**INTIMAC s.r.l.**

The machine is complete with:

## **BASE**

**Sloped Stainless steel structure complete with 4 supporting legs adjustable in height.**

Working desk height: 900 mm. +/- 50 mm.

All parts are manufactured in AISI 316 L stainless steel or covered with AISI 304 st. st.

Total dimension Not more than 3500 x 1500 x 2200 mm

Sound level no more than 75dB at 1m

## **ELECTRICALS**

Electrical plant and controls panel in compliance with European Directive of 14<sup>th</sup> June 1989 89/392/EEC modified by the directive of 20<sup>th</sup> June 1991 91/368/EEC and European rules :

EN	60204-1	EN	292
EN	294	EN	418

Power cabinet and touch screen, compact with the machine frame.

**Standard CE voltage: 380 V. – 50 Hz. - 3ph. – Neutral + PE. OR 220 V - 60 Hz**

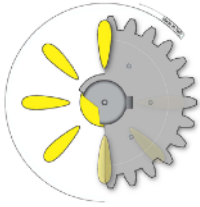
(for higher voltages, a transformer will be necessary).

Voltage controls: 24 V.

## **SAFETY DEVICES**

Standard safety devices for machine correct running are:

- No cartridge at infeed. Machine stop with manual restart.
- Cap low level into the feeding chute. Machine stop with automatic restart.
- Stopper low level into the feeding chute. Machine stop with automatic restart.
- Missing of one of the closing elements on cartridge. Machine stop with manual restart.
- Guards opening (for the standard protection guard). Machine stop with manual restart.



**INTIMAC**

**INTIMAC s.r.l.**

---

#### **Other safety devices provided**

- Emergency push-button.
- Remote control for machine jogging running.
- Acoustic alarm at each machine auto restart.
- Malfunctions are indicated on the operator's panel (including pieces counter, speed indicator, ecc.)

## **FILLING & CAPPING MACHINE:**

### **CARTRIDGE FEEDING UNIT**

#### **For the transport of cartridge :**

- *Stainless steel* to move cartridge under the filling, plugging and capping units.
- Conveyor belt in stainless steel, at very low coefficient of friction for a regular and noiseless bottle transport. It is complete with st. st. side guides, adjustable in width and height. Conveyor belt is raised as to the machine working desk to facilitate the cleaning operations.



**INTIMAC s.r.l.**

---

## **FILLING UNIT**

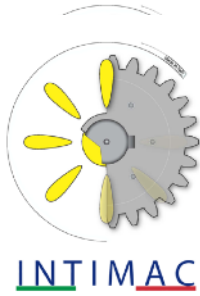
The filling unit is placed around the main star-wheel and carries out filling operations into cartridges in *Filling operations are carried out around the main star-wheel by means of bottom-up filling nozzles.*

*The dosing unit have been particularly studied for their easy and quick assembling and disassembling, **without tools**, for cleaning and sterilisation.*

No. 4 *Volumetric pumps for sterile filling*

No. 4 *AISI 316L stainless steel dosing nozzles*, performing bottom up fill system to prevent foaming or splash-back.

No. 1 *AISI 304 SS nozzle support, shifted from the bottle mouth vertical*, adjustable in height.



**INTIMAC s.r.l.**

## **CAP and bottom stoppering APPLICATION UNIT**

*This unit is placed around the main star-wheel and is prepared to apply bottom stoppering before the filling station .*

*AISI 304 st. st. frame*, compact with the machine, to support the vibrating bowl feeder. The support includes bowl height adjustment external to the frame. It will allow to have the bowl at the height of machine working desk and the installation under the Laminar Flow will result ergonomic.

*AISI 316 st. st. vibrating bowl feeder for caps diameter 480 mm.*, continuous welding, with double exit.

*Linear vibrator complete for alu caps with an AISI 316 st. st. chute* for cap feeding to the separating wheel.

*Separating wheel and guide* for the correct presentation of caps to the taking head.

*Final capping head*,



**INTIMAC s.r.l.**

---

## **CHANGE-OVER SETS REQUIRED**

*In order to handle the different sizes, the following additional change-over sets are necessary:*

*In case of different sizes, the following change-over sets are necessary:*

N° 1 additional cartridge change-over set, each including:

- main star-wheel and guide

For each additional bottom stopper change-over set:

- vibrating bowl, diam. 480 mm., AISI 316 SS
- linear chute
- Pick and place head

For each additional cap change-over set:

- vibrating bowl, diam. 480 mm., AISI 316 SS
- linear chute
- Pick and place head
- Capping head

- AISI 304 st. st. fixings, for quick and easy change-over operations with no tools, are supplied with the machine
- Each component of each additional change-over set will be marked or numbered for easier identification.



**INTIMAC s.r.l.**

---

## **Documentation**

### **INSTRUCTION MANUALS**

Instruction manuals, **supplied in English**, including:

- Installation instructions
  - Troubleshooting instructions
  - Maintenance instructions
  - Change-over procedures
  - Spare parts list
- Wiring diagrams, etc.-      Photos, drawings, etc.

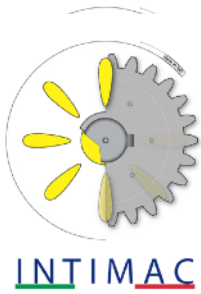
### **VALIDATION MANUAL**

This documentation package includes all information useful for machine operation. It includes INTIMAC ' format of F.A.T. and S.A.T. protocol, necessary to perform IQ/OQ. ( OPTIONAL )

### **FACTORY ACCEPTANCE TEST DOCUMENTATION**

This is made using our own F.A.T. documentation format. Table of contents of documentation can be supplied after the purchase order is issued. If customer requires different format or requires the performance of additional test, this will be quoted separately

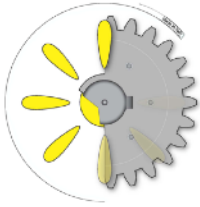




**INTIMAC s.r.l.**

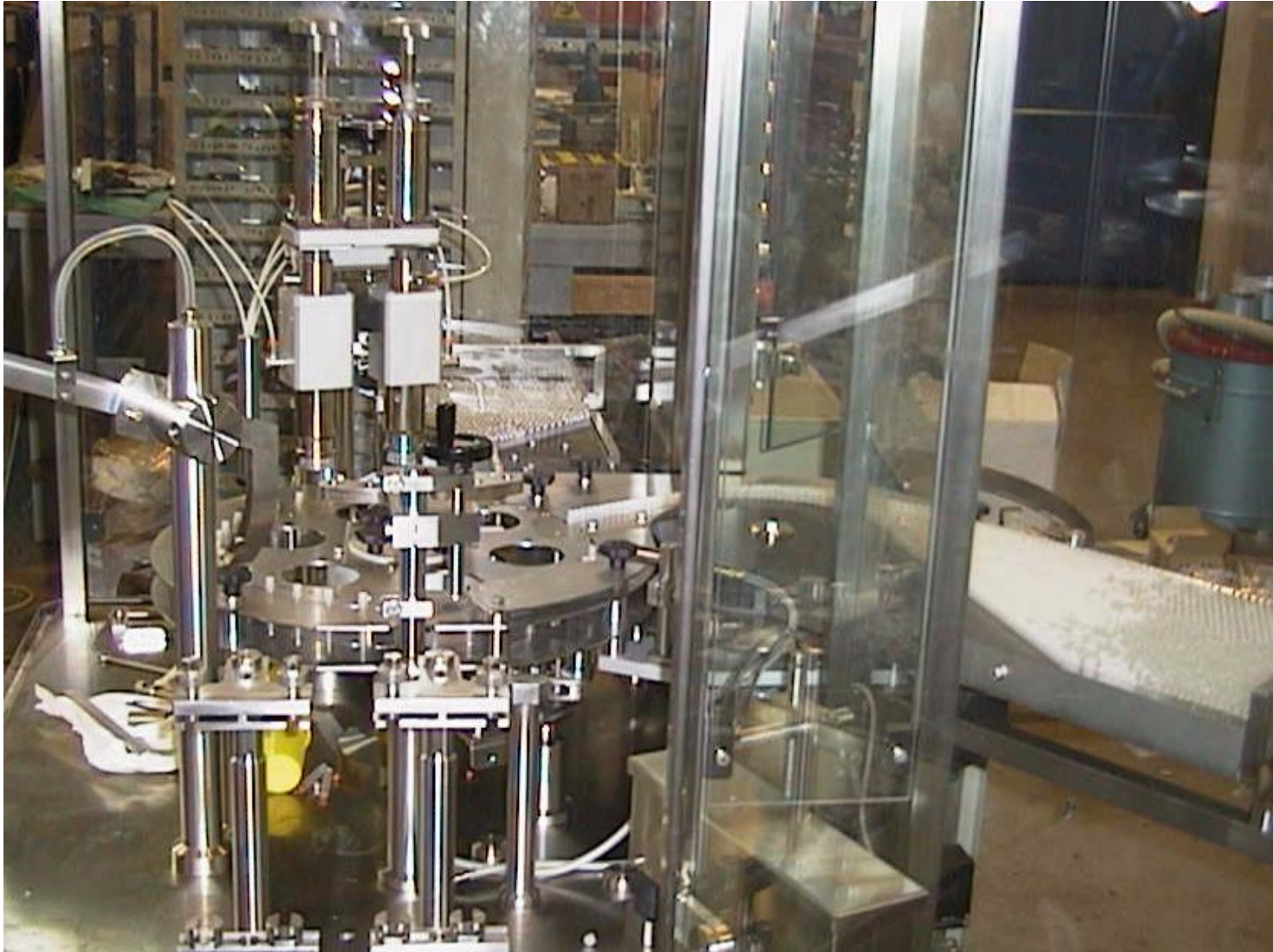
***INDICATIVE PICTURES IT MIGHT CHANGE ACCORDING CUSTOMER NEEDS***



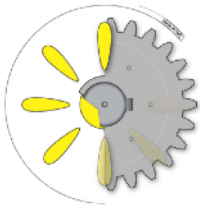


**INTIMAC**

**INTIMAC s.r.l.**







INTIMAC

INTIMAC s.r.l.





## INTIMAC s.r.l.

the time of request. Final test will be performed according to International Standards "DIN 8743". Buyer's intention of having Intimac . technician has to be indicated in the purchase order and at least one month before the estimated delivery date of the machine. The technician has to be requested at least one month before the intended date of the commissioning.

### Testing Materials:

The Buyer is required to provide the Supplier – at his own expenses (which include also duty, freight, transport, etc....) - at least 60 days before the date of the acceptance, with the samples and the material necessary to test the machines, according to the quantities expressly specified in the order confirmation: otherwise, the Supplier will be entitled – at Buyer's expense – to carry out the tests using standard placebo and European material of good manufacture.

### Guarantee:

**Intimac . guarantees the equipment for a period of 12 months from starting-up carried out in Buyer's factory. The guarantee is valid maximum for 18 months from shipment date. Guarantee covers the replacement of the components broken or defective due to faulty manufacturing. The replacement parts will be delivered at Supplier's charge, while the cost for their installation will be invoiced to the Buyer. The guarantee does not cover parts subject to normal wear and tear. The guarantee specifically excludes any damage caused by improper use of the machine and remains valid only provided that Supplier's technician carries out commissioning at Buyer factory. The above mentioned guarantee is valid for equipment running on regular working shift of 8 hours per day. Should the equipment work for longer shifts, the guarantee will be reduced proportionally.**

### Transport Insurance:

If not quoted, insurance is intended at Buyer's care and charge for the entire route. Should the Buyer require the Supplier to provide for insurance on Buyer's behalf, this has to be stated in Buyer's purchase order. Relevant costs will be charged to the Buyer on the invoice.

### Force Majeure:

The Supplier will not be liable for any loss, damage or delay in delivery due to causes beyond Supplier's reasonable control, acts of civil or military authority, fires, strikes, floods, epidemics, wars, riots, delays in transportation, transportation embargoes, etc. In the event of such delay, the delivery date will be extended for the time necessary to Compensate for the delay.

### Origin Of Goods:

Italy