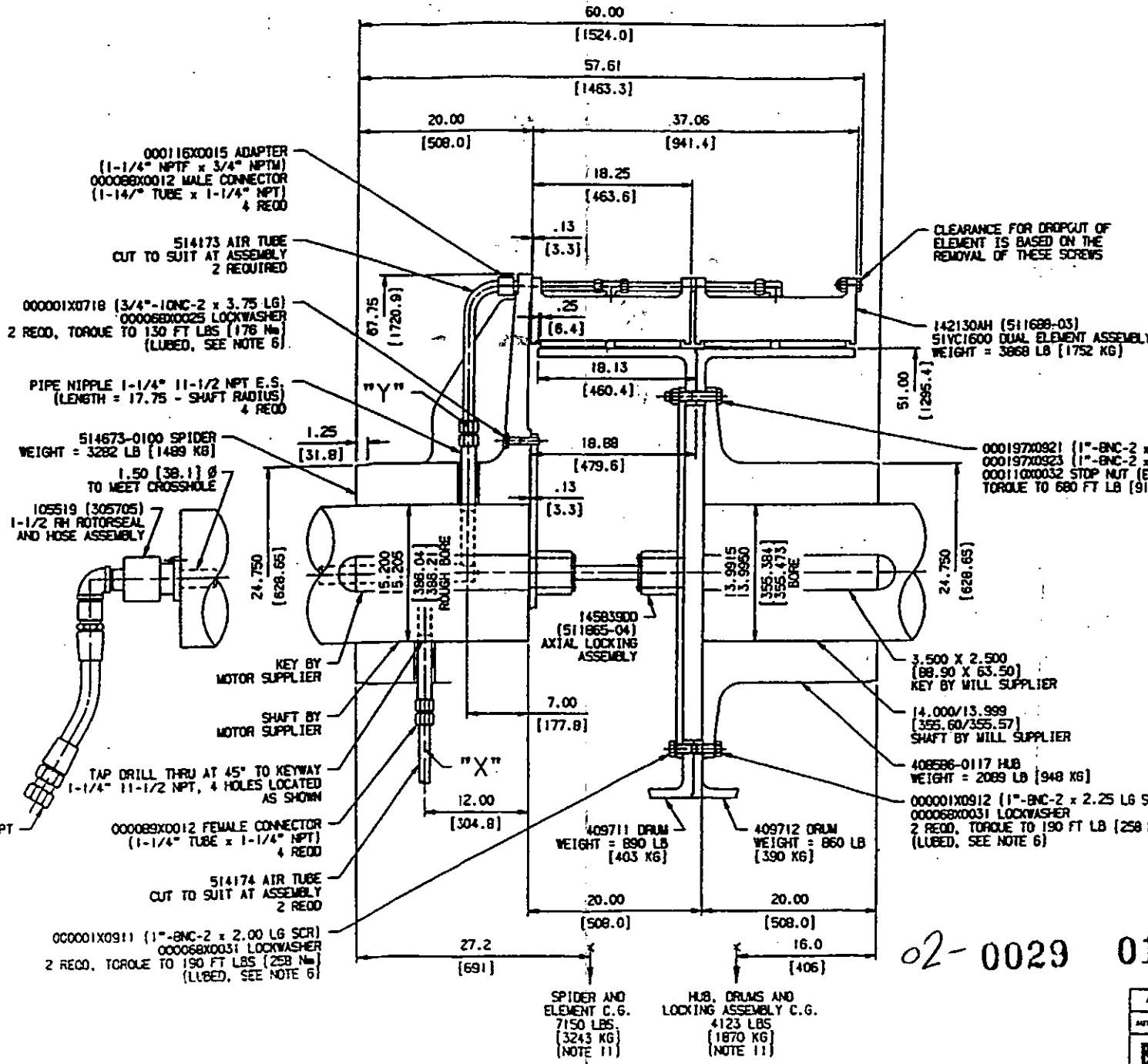


END VIEW OF SHAFT  
SHOWING DIMENSIONS FOR  
MOUNTING ROTORSEAL  
SCALE = NONE



- CLUTCH RATED TORQUE = 3,220,000 LB. IN. AT 75 PSI (384,000 Nm AT 5.2 BAR). (EXACT TORQUE RATING IS DEPENDENT UPON APPLIED AIR PRESSURE AND OPERATING SPEED).
- EATON WARRANTIES ARE VOID IF THESE SPECIFICATIONS ARE EXCEEDED. EATON ACCEPTS NO RESPONSIBILITY AND EXTENDS NO WARRANTY UNLESS IT HAS APPROVED ANY VARIATION IN ADVANCE.
- ALL ROTATING EQUIPMENT MUST BE PROTECTED TO COMPLY WITH OSHA STANDARDS.
- FOR INSTALLATION, OPERATION AND MAINTENANCE, REQUEST FORM: VC5001.
- MINIMUM RECOMMENDED SHAFT MATERIAL TO BE SAE 4140/4142 ALLOY ROUND, HEAT TREATED TO 248-321 BRINELL.
- LUBRICATE WITH SAE 30 OIL OR MOLYBDENUM DISULFIDE GREASE.
- CUSTOMER TO MOVE SHAFTS .25 [6.4] APART TO PROVIDE THE FOLLOWING CLEARANCE FOR DROP OUT:  
ELEMENT  
DRUM & AX-LCKG ASSY = .13 [3.3]
- WHEN REQUESTING INFORMATION, ALWAYS IDENTIFY THE APPLICATION BY THIS DRAWING NUMBER, THE MATERIAL LIST SHOWN AND AIRFLEX SALES ORDER NUMBER.
- VENDOR'S PART NUMBERS SHOWN MAY BE SUBSTITUTED WITH AN EQUIVALENT ALTERNATE.
- BEFORE SHIPPING, THE BEARINGS OF THE AXIAL LOCKING ASSEMBLY ARE FULLY PACKED WITH GREASE BY AIRFLEX. THE GREASE USED IS AMS/OIL MULTI-PURPOSE MOLY-COMPOUND SYNTHETIC NO. 2 EP GREASE. FOR INSTALLATION AND REPACKING OF BEARINGS, REFER TO FORM VC5001.
- CENTERS OF GRAVITY BASED ON SPECIFIED BORES.
- WEIGHT = 11,273 LB (5,113 KG) APPROX.

142130AH (511689-03)  
51VC1600 DUAL ELEMENT ASSEMBLY  
WEIGHT = 3868 LB [1752 KG]

0001970921 (1"-BNC-2 x 5.00 LB ALLOY SCR), 20 RECD  
0001970923 (1"-BNC-2 x 6.00 LB ALLOY SCR), 2 RECD  
0001100032 STOP NUT (ESNA 49NE168), 22 RECD  
TORQUE TO 680 FT LB [910 Nm] (LUBED, SEE NOTE 6)

- CUSTOMER NOTES:
- CLUTCH TORQUE = 4,293,333 LB. IN. AT 100 PSI (485,333 Nm AT 7.0 BAR)
  - MOTOR SHAFT MATERIAL IS AISI 1045 STEEL  
YIELD STRENGTH... 37,500 PSI  
ULTIMATE STRENGTH... 75,000 PSI

**CERTIFIED PRINT**  
EATON CORPORATION  
AIRFLEX PLANT  
CLEVELAND, OHIO  
P.O. NO. 10045555  
CUST. REF. 5050344 P.T.  
FILE NO. 57592/3  
DATE 11-17-99  
SIGNED *Thomas Cho*

MILL SUPPLIER... #85-340066045  
EQUIPMENT..... #E1-30-2120-01

02-0029 0145

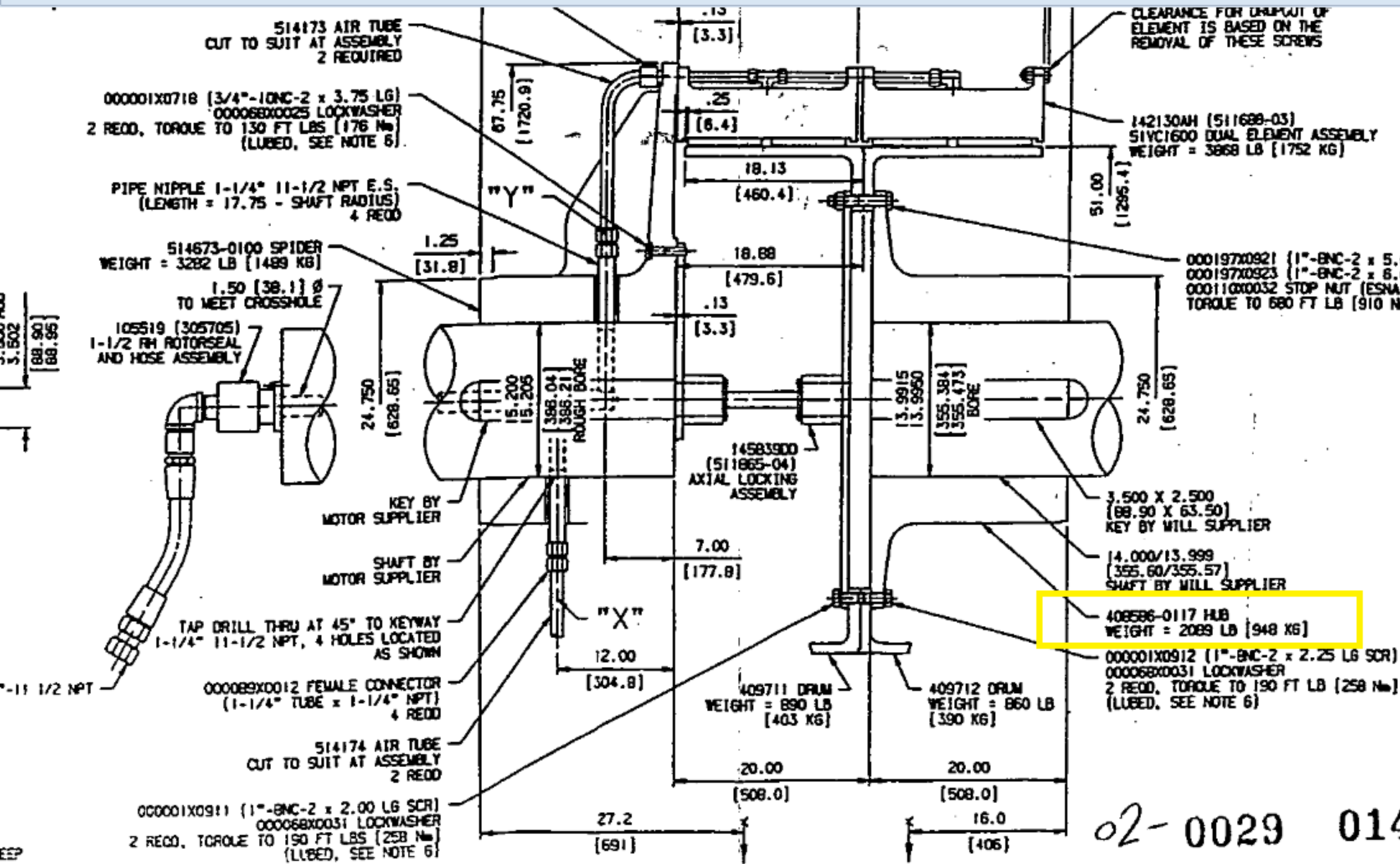
Plant: Sar Chashmeh Expansion Project Phase 1  
Equipment Tag No: E1-30-2120-01  
Equipment Name: 22" x 32.5" F/P Ball Mill  
Equipment Supplier: Svedala Industries Canada Inc.

DO NOT SCALE THIS DRAWING

|  |                         |                      |
|--|-------------------------|----------------------|
| THIRD ANGLE PROJECTION                     | CRITICAL CHARACTERISTIC | SEE FOR DIM. 1       |
| UNLESS OTHERWISE SPECIFIED:                | DIMENSIONS              | INCHES [MILLIMETERS] |
| 1. .010 - .020 BREAK ON EDGES AND CORNERS. |                         |                      |
| 2. . . MICRO FINISH                        |                         |                      |

NOTICE TO ALL PERSONS RECEIVING THIS INFORMATION:  
EATON CORPORATION CLAIMS ALL RIGHTS IN THE INFORMATION CONTAINED HEREIN OR HEREON WHICH IS DEVELOPED OR DISCOVERED BY EATON CORPORATION OR ITS EMPLOYEES AND IS NOT TO BE REPRODUCED OR TRANSMITTED IN ANY FORM OR BY ANY MEANS WITHOUT THE WRITTEN CONSENT OF EATON CORPORATION. ALL INFORMATION IS THE SOLE PROPERTY OF EATON CORPORATION. ALL INFORMATION IS TO BE KEPT CONFIDENTIAL AND NOT TO BE DISCLOSED TO ANY OTHER PARTY WITHOUT THE WRITTEN CONSENT OF EATON CORPORATION.

|   |            |                 |             |           |
|---|------------|-----------------|-------------|-----------|
| 49461   | ---        | RELEASE         | 11-17-99    | ---       |
| APPR. NO.   | LTR.       | ISSN            | CHANGE      | BY & DATE |
| <b>EATON</b><br>Airflex   |            |                 |             |           |
| Eaton Corporation<br>Airflex Division<br>8919 Clinton Road<br>Cleveland, Ohio 44134 |            |                 |             |           |
| MATERIAL: SEE DETAILS   |            |                 |             |           |
| DATE FROM   | DATE TO    | CHECKED         | BY          | APPD.     |
| 09-01-99  | 11-15/99   | PE              |             |           |
| CAGE CODE   | ITEM CLASS | SALES ORDER NO. | DRAWING NO. | REVISION  |
| 99185   | 80         | 57592/3         | LA-11002    |           |
| NAT'L. CODE   | SCALE      | NEXT ASMT.      | DATE LIST   |           |
|   | 1/8        |                 | 104748AE    |           |



CLEARANCE FOR DUMP-OUT OF  
ELEMENT IS BASED ON THE  
REMOVAL OF THESE SCREWS

- LIST SHOWN AND AIRFLEX SALE
9. VENDOR'S PART NUMBERS SHOWN WITH AN EQUIVALENT ALTERNATIVE
  10. BEFORE SHIPPING, THE BEARING ASSEMBLY ARE FULLY PACKED WITH THE GREASE USED IS AMS/OIL COMPOUND SYNTHETIC NO. 2 EP INSTALLATION AND REPACKING OF FORM VCS001.
  11. CENTERS OF GRAVITY BASED ON
  12. WEIGHT = 11,273 LB [5,113 KG]

- 000197X0921 (1"-8NC-2 x 5.00 LG ALLOY SCR), 20 REQD  
000197X0923 (1"-8NC-2 x 8.00 LG ALLOY SCR), 2 REQD  
000110X0032 STOP NUT (ESNA 49NE168), 22 REQD  
TORQUE TO 680 FT LB (910 Nm) (LUBED, SEE NOTE 6)

- CUSTOMER NOTES:
1. CLUTCH TORQUE = 4,293.3 [485,333 Nm AT 7.0 BAR]
  2. MOTOR SHAFT MATERIAL IS YIELD STRENGTH..... 37 ULTIMATE STRENGTH... 75.

**CERTIFIED**

EATON CORP  
AIRFLEX P  
CLEVELAND,

P.O. NO. 10045  
CUST. REF. 5050  
FILE NO. 5759  
DATE 11-17  
SIGNED *[Signature]*

MILL SUPPLIER...  
EQUIPMENT.....

02-0029 0145

|           |      |      |         |
|-----------|------|------|---------|
| 49461     | ---  | ---  | RELEASE |
| AUTH. NO. | LTR. | ZONE | CHANGE  |