

KIZGIN YATI POMPALARI THERMAL OİL PUMP



KIZGIN YAĞI POMPASI

THERMAL OİL PUMP

EKP tip pompalar genellikle kızgın yağ ve sıcak su proseslerinde kullanılan ısı transfer pompalarıdır. Tek fanlı, salyangoz gövdeli, şase üzerinde elektrik motoru ile kaplin bağlantılı santrifüj pompalardır. Gövde konstrüksiyonu aynı kalmak üzere yataklama sistemi olarak sıcak sıvı transferine dayanıklı olarak imal edilmektedirler.

Malzemeleri standart olarak sfero döküm gövde, çelik yataklama olarak imal edilirler. Pompa mili özel sert karbon ile ve kaplin kısmına yakın, sıcaklığın düştüğü bölgede rulmanlar ile yataklanır. Sızdırmazlık, özel tip mekanik salmastra ile sağlanır. Sıcaklığı 300°C'yi aşan veya değişik özellikler arzeden sıvıların transferlerinde soğutma sıvısı kullanılacak şekilde çift mekanik salmastra dizaynı yapılır. Ek olarak yüksek sıcaklıkların olduğu proseslerde API PLAN standartları pompalar üretilmektedir. API plan 53A,53B dizaynı tampon sıvı pompaları üretilmektedir. Bu pompalar salmastrası API plan uygun dizayn edilmektedir

Teknik Değerler

Kapasite: 4 – 450 m³ / saat

Basınç: 1 – 110 mSS

Çalışma Sıcaklığı: +2 / +380 °C

Motor gücü: 0.55 – 75 kW

Motor devri: 1500 , 3000 d/d

Kullanım Alanları

- Kimya ve petro kimya tesisleri
- Kağıt fabrikaları, şeker fabrikaları
- Gıda ve ilaç fabrikaları
- Deri endüstrisi
- Plastik ve sentetik elyaf fabrikaları
- Kauçuk endüstrisi
- Pişirme ve ısıtma fırınlarında
- Tekstil endüstrisinde
- 110 C nin üstündeki ısı transfer tesislerinde
- Malzemeler
- Gövde: Sfero dökme demir
- Çarklar Sfero dökme demir
- Sızdırmazlık: Mekanik salmastra
- Yataklama: Karbon yataklama, rulmanlı yataklama

EKP types of pumps are heat transfer pumps often used in hot oil and hot water process. Its a centrifugal pump with single impeller, volute casing, electric motor connected to pump by eelactic coupling on a chassis. To stay the same body construction, bearing system is manufactured to withstand the hot liqid transfer.

Parts are manufactured with material of ductile cast iron and steel bearing as standart.

The pump shaft bearing made by special hardened carbon and ball bearing in the area near coupling where temperture drops. Sealing is achived by a speacial mechanical seal. Temperture in excess of 300 C or in the transport of fluids which exhibit different characteristic coolant used double mechanical seal is used. In addition, pumps are produced in API PLAN standards in processes caused by high temperatures. API plan 53A,53B design buffer liquid pumps are produced. The seals of these pumps are designed in accordance with the API plan.

Technical Datas

Capacity: 4 – 450 m³ / h

Pressure: 1 – 110 m

Working Temperture: +2 / +380°C

Motor power: 0.55 – 75 kW

Motor speed: 1500 , 3000 rpm

Applications

- Chemical and petrochemical plants
- Paper and sugar factories
- Food and pharmaceutical industry
- Leather industry
- Plastic and syntetic fiber plants
- Rubber industry
- Cooking and heating furnace
- Textile industry
- Liquid has temperture above 110 C

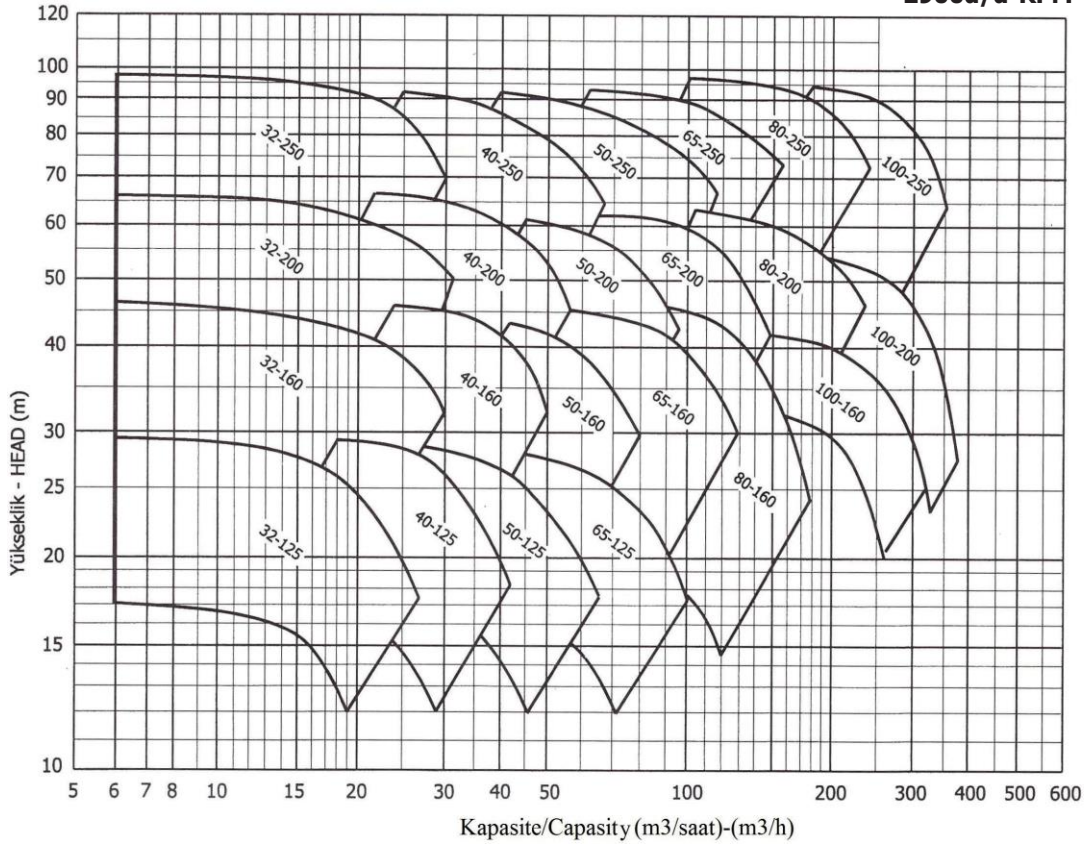
Materials

- Casing: Ductile cast iron
- Impeller: Ductile Cast Iron
- Sealing: Mechanical Seal
- Bearing : Carbon bearing, Ball Bearing

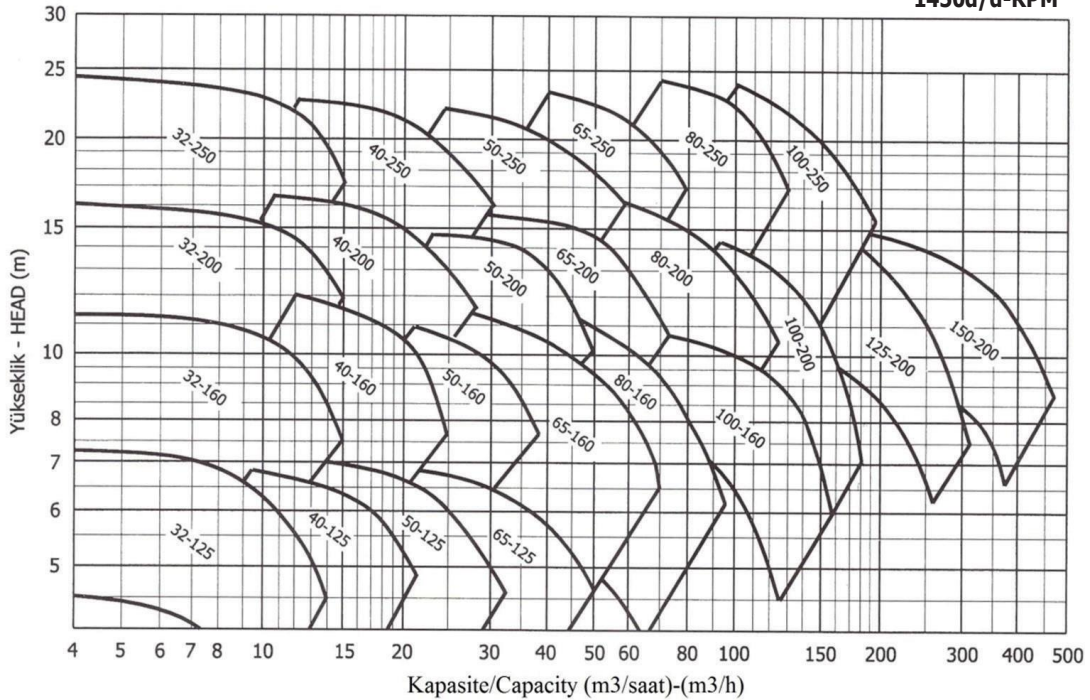
EKP Serisi Kızgınyāğ Pompaları EKP Serial Thermal Oil Pump

Pompa Performans Eğrileri
Pump Performance Curves

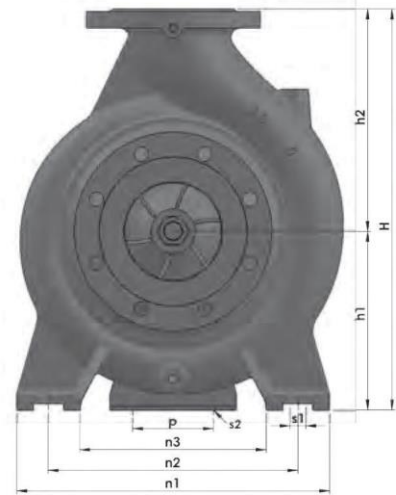
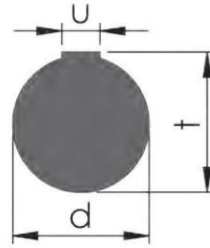
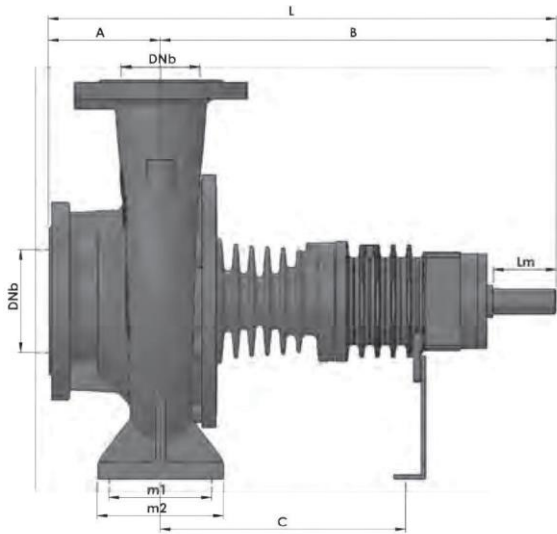
2900d/d-RPM



1450d/d-RPM



Kızgın Yağ Pompaları Termail Oil Pump



Pompa Ölçüleri / Pump Dimensions (Mm)

	DNe	DNb	A	B	L	H	h1	h2	m1	m2	n1	n2	n3	s1	p	s2	C	d	Lm	u	Ag/Wei-KG			
EKY 32-125	50	32	82	391	473	252	112	140	105	81	220	160	110		110	14	252				30			
EKY 32-160			79	392	471	292	132	160	103		240		140	12			253						34	
EKY 32-200			80	386	466	340	160	180	102		79	244		135				248						39
EKY 32-250			102	389	491	405	180	225	126	100	320	260	188	14				251						49
EKY 40-125	65	40	80	391	471	252	112	140	100	79	208	160	110	13	110	14	252				32			
EKY 40-160			90	389	479	292	132	160	103	78	246	190	132	12			250						35	
EKY 40-200			100	388	488	340	160	180	102	77	270	214	158					246	24	50	27	8	40	
EKY 40-250			114	384	498	405	180	225	128	99	320	255	186	14				251						53
EKY 50-125	65	50	100	390	490	292	132	160		77	240	190	140		110	14	251				35			
EKY 50-160			110	385	495	340	160	180		75	268	214	160	12			245						38	
EKY 50-200				383	493	360	200	108	80	269	216	147					244							43
EKY 50-250			101	387	488	405	180	225	124	97	316	248	176					249						56
EKY 65-125	80	65	100	391		340		180	125	102	280	215	150	14	110	14	252				39			
EKY 65-160				491	360	200	127	100	282	214	144			245									42	
EKY 65-200			104	384	488	405	180	225	136	109	323	255	186	12			246							47
EKY 65-250			100	502	602	450	200	250	160	125	365	278	195	18				314	32	80	35	10		76
EKY 80-160	100	80	126	390	516	405		225		99	331	263	194	12	110	14	252	24	50	27	8	47		
EKY 80-200			130	499	629	430	180	250	126		102	345	280	201			16	312						73
EKY 80-250			127	501	628						160	125	405	317			235	18	313	32	80	35	10	
EKY 100-160	125	100	120	399	519	480	200	280			363	278	193	18	110	14	261	24	50	27	8	68		
EKY 100-200			127	506	633				163	130	360	285	206	20			318							72
EKY 100-250			142	502	644	505	225	280		126	395	315	235	18			314							
EKY 125-200	150	125	143	511	654	565	250	315		160	130	400	315	244	18		32	80	35	10		89		
EKY 150-200	200	150	162	513	675	635	280	355	204	158	513	403	293	20			323					135		



ANITKAYA MAKİNE; In addition to the pride of being Turkey's first and single screw vacuum pump developer and manufacturer under the BLOWAC brand, we also have the service with the widest product range in our country. Our wide range of products includes the most advanced industrial vacuum pumps in the world today. It covers. We offer over 15 years of experience and expertise in the field of vacuum, vacuum booster, blower and compressor systems. For various vacuum applications according to sectoral needs We can provide customized solutions. Our company was founded in 2003 with 100% domestic capital. Since our founding, our customers have always been the focus of our business. Today, beyond providing direct technical support for all models of more than 20 brands, we also supply and produce original spare parts. All our maintenance and repair work is carried out on a wide range of machines. to adapt, to create limitless perspectives, and to push our own limits in a race with time. is offered. Thus, our customers benefit from convenient timely and economical solutions. benefits. We continually improve our work to maintain the highest standards. We evaluate and continue to develop innovative solutions that will define the future.

VACUUM PUMPS PRODUCTION

What is a Vacuum Pump? What is the Benefit? Vacuum pump is used below atmospheric pressure to obtain the product in production. Move a rune needed to drop or in production from one place to another It is a machine that helps with transportation.

BLOWAC is one of the vacuum pumps used in the production of businesses in TURKEY We started production with two models, screw and claw, which cannot be made, and thanks to the energy-saving mechanical structure of these machines, they contribute to the economies of the businesses working with us. aims to contribute.

SPARE PARTS PRODUCTION

Our centers for CNC 3-4-5-9 axis work in the BLOWAC production facility are expert in their field.

We manufacture vacuum pumps and blower models and parts with precision with our CNC operators. It also produces spare parts for the technical service department.

Some of the spare parts produced:

SCREW ROTORS

Screw vacuum pumps and compressor rotors sent to our company for revision, other than our own brand, are produced as soon as possible by providing technical drawings to our customers.

the need is met.

PACKINGS

The seals of all kinds of pumps are manufactured with precision in the same dimensions as the original.

CLAWS

PALLETS

The pallets of oil vane vacuum pumps must be manufactured in a very short time.

GEAR GROUP

1. Helical Gear
2. Straight Gear
3. Conical Disc

By using gear manufacturing materials, the design is made in the original parts and production is started.

BLOWER PRODUCTION

BLOWAC ensures functionality and quality with its experienced technical support team ready to serve 24/7. through an organizational effort that does not disrupt the production of businesses by bringing them together It launched its BLOWER and VACUUM BLOWER (BOOSTER) production with the EAGLE model and gained great momentum with its domestic and international sales.

BLOWAC BLOWER MODELS

EAGLE 10K EAGLE 15B

EAGLE 25K EAGLE 30B

EAGLE 35K EAGLE 50B

EAGLE 60K EAGLE 80B

EAGLE 90K EAGLE 130B

EAGLE 150K EAGLE 180B

BLOWAC VACUUM BLOWER (BOOSTER) MODELS

EAGLE 600 HV EAGLE 1500 HV

EAGLE 2100 HV EAGLE 3600 HV

EAGLE 5400 HV EAGLE 9000 HV

EAGLE 14400 HV



In addition to many areas of use, this system, which is used especially in applications where moving cisterns require compressed air, is resistant to vibration, capable of dry and contactless cleaning. It provides users with a compact design that allows speed control and does not require maintenance. It provides convenience and savings in every area.

• Since no oil or water circulates inside, it does not cause frequent clogging or malfunctions, and is durable and economical.

• Since it is 100% domestic production, it is easily accessible and delivered in a short time.

• Spare parts production is available. Available immediately.

• There is a 24/7 service network throughout Türkiye. When a malfunction occurs, on-site intervention is made and a solution is provided as soon as possible without disrupting your production.

• A 50% reduction in energy consumption is observed with the energy-saving inner structure.

Areas of Use:

- Transport
- Automotive
- Railway
- Maritime
- Aviation
- Stabil
- Electricity production

Some of the industrial sectors where it is used:

- Glass Industry
- Coating Sector
- Advertising
- Furniture Industry

DRY CLAW VACUUM PUMP

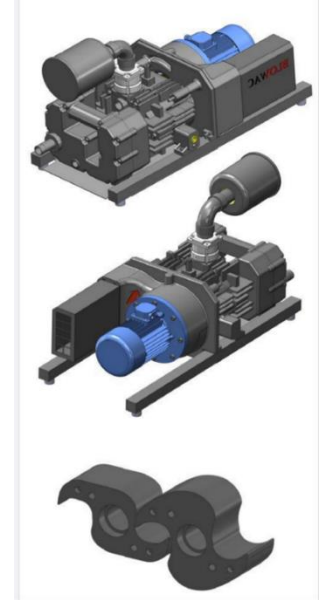
SCORPION 300 vacuum pump, which was first produced by our company in Turkey, is preferred by businesses that want to work with high vacuum. Affordable price, energy saving and low maintenance It regains the principal invested in it in a short time.

DRY HOOK (CLAW) VACUUM PUMP

GROUP SCORPION 100

SCORPION 300

		SCORPION300
Nominal pumping speed	m ³ /h	300
Final pressure	mbar	100 (-900)
Rated engine power	kw	5.5
Engine speed range	RPM	3000
Sound level	Db(A)	75
Ambient temp. rate	°C	0... 40
Ambient pressure		Atmosphere pressure
Oil capacity	L	1.5
Approximate weight	kg	~295



Areas of use:

- Pneumatic conveying equipment
- Vacuum transport
- Pressurized transport
- Chemical industry
- Coating technology
- Industrial ovens
- Food industry
- Central vacuum systems

Screw "High Vacuum" DRAGON 300m³ - DRAGON 600m³ - DRAGON 1000m³ high vacuum pumps produced by our company for the first time in Turkey are economical compared to their counterparts imported from abroad and are directly reflected in energy savings. In addition, since it performs a dry vacuum (no oil or water circulates in its mechanical structure while it is working), it does not cause frequent malfunctions and thus, there is a significant reduction in maintenance and revision costs.

This system combines the advantages of dry air driven screws with the high capacity of booster pumps.

- Since no oil or water circulates inside, it does not cause frequent clogging or malfunctions, and is durable and economical.
- Since it is 100% domestic production, it is easily accessible and delivered in a short time.
- Spare parts production is available. Available immediately.
- There is a 24/7 service network throughout Türkiye. When a malfunction occurs, on-site intervention is carried out and a solution is provided as soon as possible without disrupting your production.
- A 50% reduction in energy consumption is observed with the energy-saving business structure.

Areas of use:

General applications

- Dust extraction
- Drying
- Different process applications
 - Degassing-drying plastic pellets in extrusion
 - Vacuum distillation-drying processes
- Environmental technology
 - Dust extraction
- Ventilation
 - Purification of wastewater
- Tank ventilation
- Filter rinse
 - Sewage water cleaning
- Equipment of suction vehicles
 - Gas mixing
- Domestic waste water system
- Wood industry

DRAGON 300

DRAGON 600

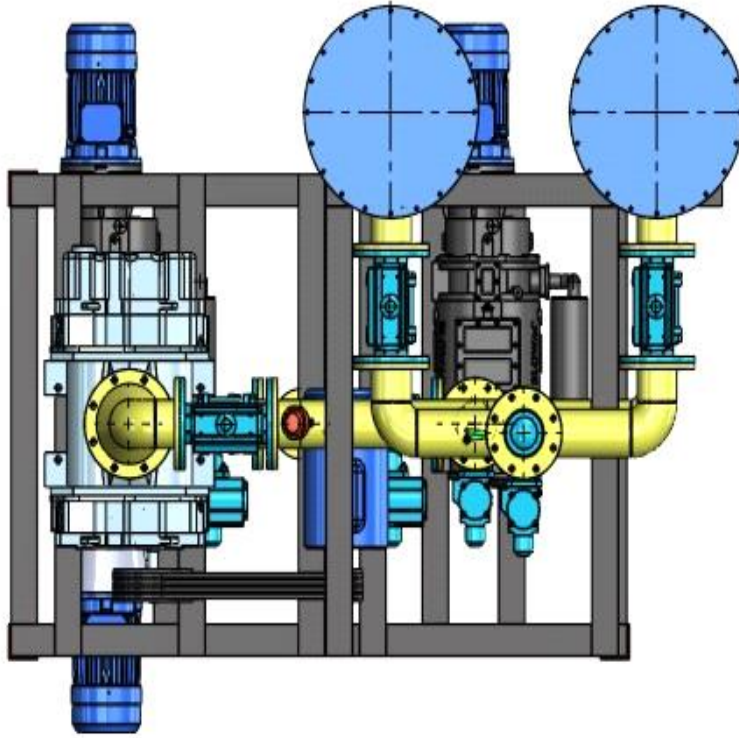
DRAGON 1000



		DRAGON300
Nominal pumping speed	m ³ /h	300
Final pressure	mbar	0.01 /1x10 ⁻² / 1 pascal
Rated engine power	kw	7.5
Engine speed range	RPM	3000
Sound level	Db(A)	75
Ambient temp. rate	°C	0... 40
Ambient pressure		Atmosphere pressure
Oil capacity	L	1.5
Approx. weight	kg	~350

		DRAGON600
Nominal pumping speed	m ³ /h	600
Final pressure	mbar	0.05 /5x10 ⁻²
Rated engine power	kw	15
Engine speed range	RPM	3000
Sound level	Db(A)	80
Ambient temp. rate	°C	0... 40
Ambient pressure		Atmosphere pressure
Oil capacity	L	2.5
Approx. weight	kg	~550

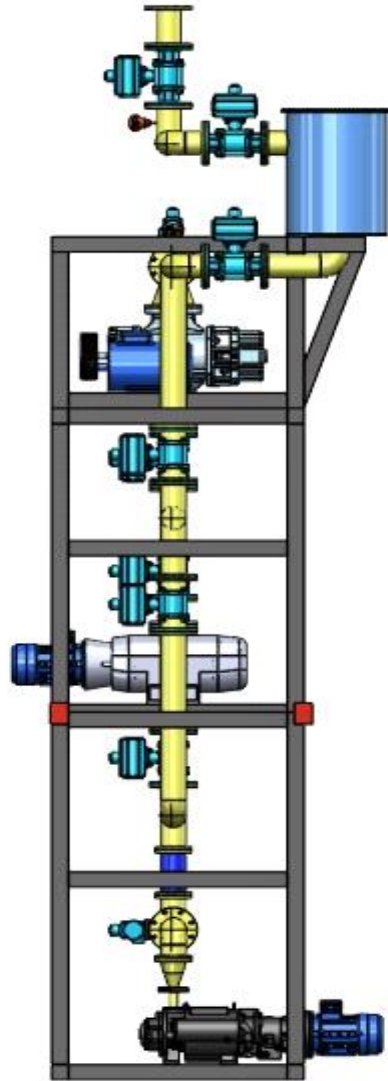
		DRAGON1000
Nominal pumping speed	m ³ /h	1000
Final pressure	mbar	0.05 /5x10 ⁻²
Rated engine power	kw	30
Engine speed range	RPM	3000
Sound level	Db(A)	80
Ambient temp. rate	°C	0... 40
Ambient pressure		Atmosphere pressure
Oil capacity	L	4
Approx. weight	kg	~850





ANITKAYA

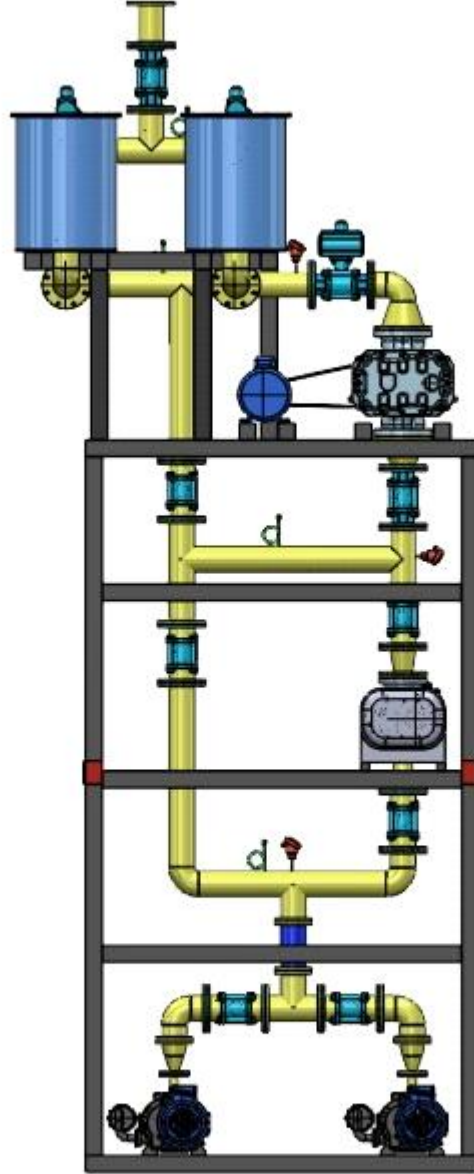
MAKİNE SANAYİ VE TİCARET LİMİTED ŞİRKETİ





ANITKAYA

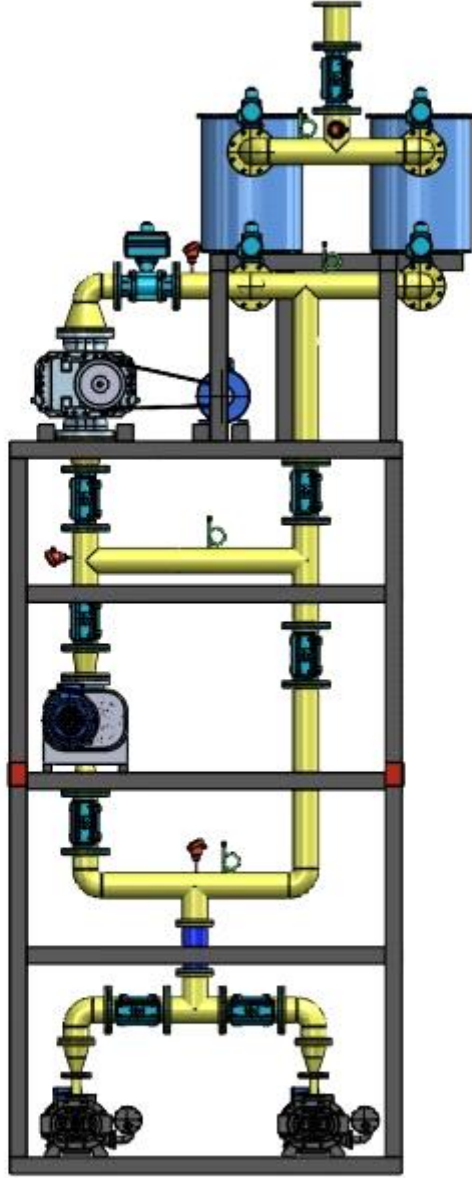
MAKİNE SANAYİ VE TİCARET LİMİTED ŞİRKETİ





ANITKAYA

MAKİNE SANAYİ VE TİCARET LİMİTED ŞİRKETİ





ANITKAYA

MAKİNE SANAYİ VE TİCARET LİMİTED ŞİRKETİ

