



# 嘉善力天机械有限公司

## JIASHAN LIK TIN MACHINERY CO., LTD.

■ 地址: 浙江省嘉善台升大道3号2幢层

■ 电话(Sales Direct): 0573-84583229

■ <http://www.liktinmachinery.com>

■ E-mail: iwashi@vip.163.com

### 客户信息:

Client: IRAN TOHID COMPANY

案号: LT2023041101

联络人:

有效期: 三十日

公司地址:

This quotation is valid for 30 days

联络电话:

E-mail:

### 客户需求customer demand:

线材材质Wire material:

最大入线线径Maximum input diamet  $\varnothing$  34mm

最小出线线径Minimum output diame  $\varnothing$  8mm

项目Items	型号 Model	数量QTY
伸线设备Defense equipment: 回转式放线架+倒立式拉丝机 Inverted slipping type extension machine	TLF-2000+HD-800	1 套
伸线设备Defense equipment: 回转式放线架+倒立式拉丝机 Inverted slipping type extension machine	TLF-2000+HD-1000	1 套
伸线设备Defense equipment: 自动盘元送线机+车头机+倒立式滑落型伸线机 Automatic disk feeder +Turning machine + Inverted slipping type extension ma (含液压夹头、含动力压轮 (Including hydraulic chuck and power pressure wheel)	AS/AL30+HD-1200	1 套
Rolling head machine	辊压线头机RH-13	1 台
Rolling head machine	翻转式辊压线头机RHT-25	1 台



嘉善力天机械有限公司

JIASHAN LIK TIN MACHINERY CO., LTD.

■ 地址：浙江省嘉善台升大道3号2幢层

■ 电话(Sales Direct): 0573-84583229

力天机械

■ <http://www.liktinmachinery.com>

■ E-mail: iwashi@vip.163.com

## 设备明细Equipment details:

### 辊压线头机

Model: RH-13

范围: 8.0 - 1.6mm

功率: 3KW

### 翻转式辊压线头机

Model: RHT-25

范围: 25 - 12mm

功率: 7KW



# 嘉善力天机械有限公司

## JIASHAN LIK TIN MACHINERY CO., LTD.

地址: 浙江省嘉善台升大道3号2幢层

电话(Sales Direct): 0573-84583229

力天机械

http://www.liktinmachinery.com

E-mail: iwashi@vip.163.com

### 设备明细Equipment details:

倒立式滑落型伸线机Inverted slipping type extension machine

Model: TLF-2000+HD-800

每月生产

912 吨

16 小时

25 天 80%生产效率



(图片仅供参考Photos are for reference onl

马达&变频器 **SIAD** The motor & frequency converter

赛德电机+汇川变频器X	1	(800伸线胴)	45 KW
+汇川变频器X	1	(收线机)	2.2 KW

伸线范围Scope of wire drawing:

入线 → 出线范围 (Φ 14.0 mm) ~ (Φ 8.0 mm)

伸线速度: 0~80 米 / 每分钟(最高速度)

Stretching speed 80 M/minute (fastest)

伸线胴直径trunk: Φ800mmX1

电 压: 380V / 50Hz / 3Ø

压 轮: 2组 塑料钢 (双)

Press wheel 2 SE Plastic steel (Double)

伸线方向 Wire drawing direction: 待客户确认方向customer to confirm direction

### HD-800Eye Die table

入线直径in line diameter	出线直径Output Wire diameter	合计减面率 Total Reduction rate	平均减面率 The average Reduction rate	最大速度 maximum speed	产量 output	眼模Die	合计total
Φ m/m	Φ m/m	%	%	米/分 meter/minute	吨/时 Ton/hour	数量QTY	功率power (KW)
12.0	10.5	23.4	23.40	70	2.85	1	47.7



# 嘉善力天机械有限公司

JIASHAN LIK TIN MACHINERY CO., LTD.

地址：浙江省嘉善台升大道3号2幢层

电话(Sales Direct): 0573-84583229

力天机械

http://www.liktinmachinery.com

E-mail: iwashi@vip.163.com

## ●伸线胴:

底材采合金球墨铸铁 (FCD-45), 经热处理调质后表面硬度达 HRC40° ± 2°

Material: Alloy ductile iron (FCD - 45).

After heat treatment and quenching, the surface hardness reaches HRC40° ± 2°

伸线胴寿命: 5 年 ( 大约 ), 视客户保养及操作情况.

The lifetime of trunk is about 5-8 years, according to the condition of customer using

伸线胴水冷却

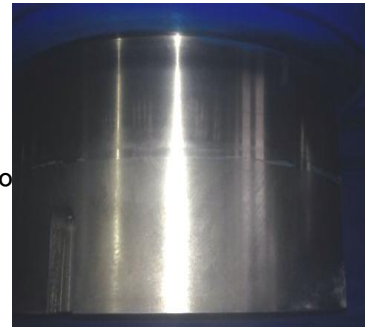
High efficiency trunk full water cooling cycle

伸线胴表面喷碳化钨钢后, 镜面研磨硬度达 HRC68° ± 2°

After the trunk surface sprayed with tungsten carbide, the mirror

伸线胴表面喷碳化钨钢, 高度120mm

grinding hardness can be HRC68 ° ±2°, Height 120mm



## ●减速机Reducer:

传动效率95%较有力及扭力效率损失5%, 适合高负载长时间运转寿命长

95% transmission efficiency and 5% loss of torque efficiency, suitable for high load and long service life

材质为CM415合金钢经热处理后硬度可达HRC59°

The hardness of the CM415 alloy steel is HRC59 degrees after heat treatment.

## ●压力控制 Pressure control:

线压轮采汽压缸装置, 挂线时, 防止掉线, 安装于各伸线胴后方

The line pressure wheel adopts the steam pressure cylinder device to prevent the wire from being

dropped when the wire is hung, and it is installed at the rear of each wire

## ●冷却系统 Cooling system:

伸线胴采用高效率循环满水位冷却循环快

The high efficiency circulation full water level cooling cycle is fast

标准眼模座采直接水冷眼模系统

Standard eye mould block directly use water cooling eye mould system

机台前提供循环水流控制阀门

The machine provide circulating water flow control valve

当停机状态时, 电磁阀自动启动并截断所有机台水流动作, 有效防止漏水问题

When the machine is in the stop state, the solenoid valve automatically starts and cuts off the water

flow of all the machines, effectively preventing the water leakage problem.

故障自动报警装置 Automatic fault alarm device





# 嘉善力天机械有限公司

JIASHAN LIK TIN MACHINERY CO., LTD.

■ 地址: 浙江省嘉善台升大道3号2幢层

■ 电话(Sales Direct): 0573-84583229

力天机械

■ <http://www.liktinmachinery.com>

■ E-mail: iwashi@vip.163.com

## ●控制系统 Control system:

收线转盘与伸线胴各有马达控制速度.

The take up turntable and trunk have the motor speed control.

主机AC变频系统可调式控制、寸动、比例联动运转.

Host AC frequency conversion system adjustable control, inching, proportional linkage of 收线转盘马达减速机拖出及送入, 收线达:1.5 - 2.0吨.

The take-up turntable motor reducer is pulled out and sent in, and the line is up to 1.5 收线底盘可调式控制, 寸动运转.

Take-up chassis adjustable control, inching operation.

线速表安装于机台上易于操作者监控.

Line speed table installed on the machine operators to monitor easily.

圈数到达后两段降速停止.

The number of laps reaches second and slow down to stop

## ●眼模Eye Die:

眼膜座前安装直立式矫直轮, 进口装井字轮组。

An upright straightening wheel is installed in front of

the eye die, and an imported wellbore wheel set is installed.

## ●电控系统 Electrical control system:

控制箱采用防尘装置. 所有按钮采用防尘防水装置, 附电抗稳压器, 电控系统质量高, 寿命

The control box is dust-proof. All buttons are dustproof and waterproof with a voltage re

The electronic control system has high quality and long lifetime.

## ●噪音程度 Noise level:

低于 85 dBA (below 85 dBA)





# 嘉善力天机械有限公司

## JIASHAN LIK TIN MACHINERY CO., LTD.

地址: 浙江省嘉善台升大道3号2幢层

电话(Sales Direct): 0573-84583229

力天机械

http://www.liktinmachinery.com

E-mail: iwashi@vip.163.com

### 设备明细Equipment details:

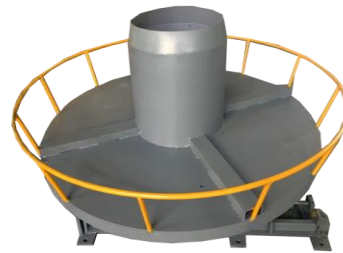
倒立式滑落型伸线机Inverted slipping type extension machine

Model: TLF-2000+HD-1000

每月生产 2249.6 吨

16 小时

25 天 80%生产效率



(图片仅供参考Photos are for reference only)

马达&变频器 SAIDE The motor & frequency converter

赛德电机+汇川变频器X	1	(1000伸线胴)	55 KW
+汇川变频器X	1	(收线机)	2.2 KW

伸线范围Scope of wire drawing:

入线 → 出线范围 (∅ 22.0 mm) ~ (∅ 12.0 mm)

伸线速度: 0~50 米 / 每分钟(最高速度)

Stretching speed 50 M/minute (fastest)

伸线胴直径trunk: ∅1000mmX1

电压: 380V / 50Hz / 3∅

压轮: 3组 塑料钢 (双)

Press wheel 3 SE Plastic steel (Double)

伸线方向 Wire drawing direction: 待客户确认方向customer to confirm direction

### HD-1000Eye Die table

入线直径in line diameter	出线直径Output Wire diameter	合计减面率Total Reduction rate	平均减面率The average Reduction rate	最大速度maximum speed	产量output	眼模Die	合计total
∅ m/m	∅ m/m	%	%	米/分钟meter/minute	吨/时Ton/hour	数量QTY	功率power (KW)
22.0	19.5	21.4	21.40	50	7.03	1	57.7





# 嘉善力天机械有限公司

## JIASHAN LIK TIN MACHINERY CO., LTD.

■ 地址：浙江省嘉善台升大道3号2幢层

■ 电话(Sales Direct): 0573-84583229

力天机械

■ <http://www.liktinmachinery.com>

■ E-mail: iwashi@vip.163.com

### ●伸线胴:

底材采合金球墨铸铁 (FCD-45), 经热处理调质后表面硬度达 HRC40° ± 2°

Material: Alloy ductile iron (FCD - 45).

After heat treatment and quenching, the surface hardness reaches HRC40° ± 2

伸线胴寿命: 5 年 ( 大约 ), 视客户保养及操作情况.

The lifetime of trunk is about 5-8 years, according to the condition of customer using

伸线胴水冷却

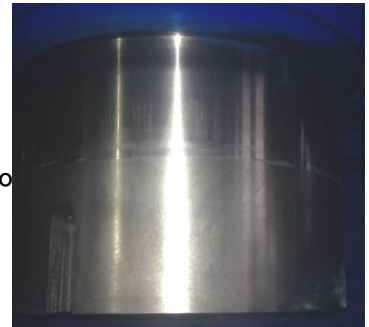
High efficiency trunk full water cooling cycle

伸线胴表面喷碳化钨钢后, 镜面研磨硬度达 HRC68° ± 2°

After the trunk surface sprayed with tungsten carbide, the mirror

伸线胴表面喷碳化钨钢, 高度120mm

grinding hardness can be HRC68 ° ±2°, Height 120mm



### ●减速机Reducer:

传动效率95%较有力及扭力效率损失5%, 适合高负载长时间运转寿命长

95% transmission efficiency and 5% loss of torque efficiency, suitable for high load and long service life

材质为CM415合金钢经热处理后硬度可达HRC59°

The hardness of the CM415 alloy steel is HRC59 degrees after heat treatment.

### ●压力控制 Pressure control:

线压轮采汽压缸装置, 挂线时, 防止掉线, 安装于各伸线胴后方

The line pressure wheel adopts the steam pressure cylinder device to prevent the wire from being

dropped when the wire is hung, and it is installed at the rear of each wire

### ●冷却系统 Cooling system:

伸线胴采用高效率循环满水位冷却循环快

The high efficiency circulation full water level cooling cycle is fast

标准眼模座采直接水冷眼模系统

Standard eye mould block directly use water cooling eye mould system

机台前提供循环水流控制阀门

The machine provide circulating water flow control valve

当停机状态时, 电磁阀自动启动并截断所有机台水流动作, 有效防止漏水问题

When the machine is in the stop state, the solenoid valve automatically starts and cuts off the water

flow of all the machines, effectively preventing the water leakage problem.

故障自动报警装置 Automatic fault alarm device





# 嘉善力天机械有限公司

JIASHAN LIK TIN MACHINERY CO., LTD.

■ 地址: 浙江省嘉善台升大道3号2幢层

■ 电话(Sales Direct): 0573-84583229

力天机械

■ <http://www.liktinmachinery.com>

■ E-mail: iwashi@vip.163.com

## ●控制系统 Control system:

收线转盘与伸线胴各有马达控制速度.

The take up turntable and trunk have the motor speed control.

主机AC变频系统可调式控制、寸动、比例联动运转.

Host AC frequency conversion system adjustable control, inching, proportional linkage of 收线转盘马达减速机拖出及送入, 收线达:1.5 - 2.0吨.

The take-up turntable motor reducer is pulled out and sent in, and the line is up to 1.5 收线底盘可调式控制, 寸动运转.

Take-up chassis adjustable control, inching operation.

线速表安装于机台上易于操作者监控.

Line speed table installed on the machine operators to monitor easily.

圈数到达后两段降速停止.

The number of laps reaches second and slow down to stop

## ●眼模Eye Die:

眼膜座前安装直立式矫直轮, 进口装井字轮组。

An upright straightening wheel is installed in front of

the eye die, and an imported wellbore wheel set is installed.

## ●电控系统 Electrical control system:

控制箱采用防尘装置. 所有按钮采用防尘防水装置, 附电抗稳压器, 电控系统质量高, 寿命

The control box is dust-proof. All buttons are dustproof and waterproof with a voltage re

The electronic control system has high quality and long lifetime.

## ●噪音程度 Noise level:

低于 85 dBA (below 85 dBA)







# 嘉善力天机械有限公司

## JIASHAN LIK TIN MACHINERY CO., LTD.

■ 地址: 浙江省嘉善台升大道3号2幢层

■ 电话(Sales Direct): 0573-84583229

力天机械

■ <http://www.liktinmachinery.com>

■ E-mail: iwashi@vip.163.com

### 设备明细Equipment details:

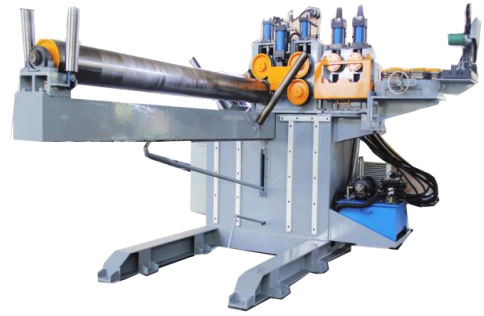
自动盘元送线机+车头机+倒立式滑落型伸线机AS/AL30+HD-1200

Automatic disk feeder +Turning machine + Inverted slipping type extension machine

每月生产 **2048** 吨

**16** 小时

**25** 天 80%生产效率



(图片仅供参考Photos are for reference only)

### 马达&变频器SAIDE Electric machinery+INOVNC VFD

赛德电机+汇川变频器X	1	(伸线机)	<b>90 KW</b>
汇川变频器X	1	(放线机)	<b>7.5 KW</b>
汇川变频器X	1	(车头机)	<b>3 KW</b>
汇川变频器X	1	(收线转盘)	<b>2.2 KW</b>

控制器Controller

PLC程式控制器三菱品牌 PLC Mitsubishi

伸线范围: ( $\varnothing$  34.0 mm) ~ ( $\varnothing$  20.0 mm)

Scope of wire drawing

伸线速度: 0~25 米 / 每分钟(最高速度)

Stretching speed 25 M/minute (fastest)

伸线胴直径trunk:  $\varnothing$ 1200mmX1

电 压: 380V / 50Hz / 3 $\varnothing$

压 轮: 3组 塑料钢压轮 (双)

Press wheel 3 Plastic steel (pressurized cylinder. Double)



### HD-1200 Eye Die table

入线直径in line diameter	出线直径Output Wire diameter	合计减面率	平均减面率	最大速度 maximum speed	产量 output	眼模Die	合计total
$\varnothing$ m/m	$\varnothing$ m/m	%	%	米/分 meter/minute	吨/时 Ton/hour	数量QTY	功率power (KW)
<b>28.0</b>	<b>26.3</b>	11.8	11.80	<b>25</b>	6.4	<b>1</b>	<b>87.7</b>



# 嘉善力天机械有限公司

## JIASHAN LIK TIN MACHINERY CO., LTD.

■ 地址：浙江省嘉善台升大道3号2幢层

■ 电话(Sales Direct): 0573-84583229

力天机械

■ <http://www.liktinmachinery.com>

■ E-mail: iwashi@vip.163.com

### 设备明细 Equipment details:

#### 自动盘元送线机 Automatic disk feeder Model: AS\AL-30

这是一台能将传统式工法的30分钟缩短仅有4分钟内即可完成之全自动线材送线机，  
自送线→垂直弯线头→校直→送线至眼模入口处一律由机械完成

This is one that can be shorten the traditional 30 minutes of the traditional method by c  
The fully automatic wire feeder can be completed within the line, from the feed line to the vertical bendi  
Straight line, line feed to the entrance of the eye mold, all machines.

自动完成，适用于伸线机及直棒伸线机等大线径线材设备。

Automatically completed, suitable for large wire and wire equipment such as wire  
drawing machine and straight bar drawing machine.

#### 压线校直装置 Press straightening device

校直：“X” “Y” 方向十字校正轮，

Alignment: "X" "Y" direction cross correction wheel.

其中有2组校正轮附油压缸控制。

There are 2 sets of correction wheel with hydraulic cylinder control.

校正轮组均表面硬度处理，耐磨损

The correction wheel group is treated with surface hardness and wear resistance.

#### 压线头组：采油压系统 Pressure head group: oil pressure system

AC马达与变频器控制，速度自动调整并与伸线

AC motor and inverter control, speed automatic adjustment and extension.

机连动，全部动作由机械自动运作，可寸动正

The machine operates continuously, and all actions are automatically operated by the mach  
逆转，送线辊轮由油压缸自动控制。

The transmission roller is automatically controlled by the hydraulic cylinder.





嘉善力天机械有限公司

JIASHAN LIK TIN MACHINERY CO., LTD.

■ 地址: 浙江省嘉善台升大道3号2幢层

■ 电话(Sales Direct): 0573-84583229

力天机械

■ <http://www.liktinmachinery.com>

■ E-mail: iwashi@vip.163.com

## 设备明细 Equipment details:

车头机Turning machine

车削装置

turning fixture

四组刀具同步调整

Synchronous adjustment of four groups of tool

车刀冷区装置

Turning tool cold zone device

切削液通过冷区泵喷淋在刀具上进行冷区。

The cutting fluid is sprayed on the tool through the cold

zone pump for cold zone

安全装置Safety device:

乱线自动停止Automatic line stop

车削机安全门打开自动停止

Turning the safety door of the turning machine to stop automatically

送线至伸车头机定位自动停止

The location of the wire feeder to the extension head automatically stops.

自然OFF停止Natural OFF stop

寸动与伸线机连动装置Linkage device for inch movement and extension machine

断线自动停止装置及刹车系统. Automatic disconnection device and brake system

故障自动报警装置Automatic alarm device for failure





# 嘉善力天机械有限公司

## JIASHAN LIK TIN MACHINERY CO., LTD.

■ 地址：浙江省嘉善台升大道3号2幢层

■ 电话(Sales Direct): 0573-84583229

力天机械

■ <http://www.liktinmachinery.com>

■ E-mail: iwashi@vip.163.com

### 设备明细 Equipment details:

#### ●伸线胴:

底材采合金球墨铸铁 (FCD-45), 经热处理调质后表面硬度达 HRC40° ± 2°

Material: Alloy ductile iron (FCD - 45).

After heat treatment and quenching, the surface hardness reaches HRC40° ± 2°

伸线胴寿命: 5 年 ( 大约 ), 视客户保养及操作情况.

The lifetime of trunk is about 5-8 years, according to the condition of customer using

伸线胴水冷却

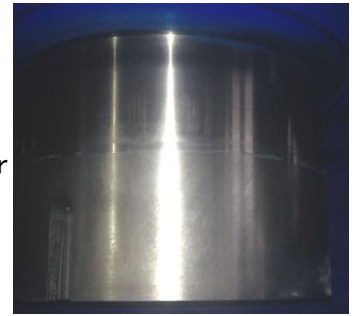
High efficiency trunk full water cooling cycle

伸线胴表面喷碳化钨钢后, 镜面研磨硬度达 HRC68° ± 2°

After the trunk surface sprayed with tungsten carbide, the mirror

伸线胴表面喷碳化钨钢, 高度220mm

grinding hardness can be HRC68 ° ±2°, Height 220mm



#### ●减速机Reducer:

传动效率95%较有力及扭力效率损失5%, 适合高负载长时间运转寿命长

95% transmission efficiency and 5% loss of torque efficiency, suitable for high load and long service life

材质为CM415合金钢经热处理后硬度可达HRC59°

The hardness of the CM415 alloy steel is HRC59 degrees after heat treatment.

#### ●压力控制 Pressure control:

线压轮采汽压缸装置, 挂线时, 防止掉线, 安装于各伸线胴后方

The line pressure wheel adopts the steam pressure cylinder device to prevent the wire from being

dropped when the wire is hung, and it is installed at the rear of each wire

#### ●引线装置Lead wire device

采用液压自动夹头, 力天专利设计。

Hydraulic automatic chuck

线头长度≤350mm, 减少车头作业时间及材料损耗。

Thread length ≤ 350mm,

Reducing locomotive operation time and material loss







# 嘉善力天机械有限公司

## JIASHAN LIK TIN MACHINERY CO., LTD.

地址：浙江省嘉善台升大道3号2幢层

电话(Sales Direct): 0573-84583229

力天机械

http://www.liktinmachinery.com

E-mail: iwashi@vip.163.com

### 设备明细 Equipment details:

#### ●冷却系统 Cooling system:

伸线胴采用高效率循环满水位冷却循环快

The high efficiency circulation full water level cooling cycle is fast

标准眼模座采直接水冷眼模系统

Standard eye mould block directly use water cooling eye mould s

机台前提供循环水流控制阀门

The machine provide circulating water flow control valve

当停机状态时,电磁阀自动启动并截断所有机台水流动作,有效防止漏水问题

When the machine is in the stop state, the solenoid valve automatically starts and cuts off the water

flow of all the machines, effectively preventing the water leakage problem.

故障自动报警装置 Automatic fault alarm device

#### ●控制系统 Control system:

收线转盘与伸线胴各有马达控制速度.

The take up turntable and trunk have the motor speed control.

主机AC变频系统可调式控制、寸动、比例联动运转.

Host AC frequency conversion system adjustable control, inching, proportional linkage op

#### ●收线机 Wire take-up machine

收线转盘马达减速机拖出及送入,收线达:1.5 - 2.0吨.

The take-up turntable motor reducer is pulled out and sent in, and the line is up to 1.5

收线底盘可调式控制,寸动运转.

Take-up chassis adjustable control, inching operation.

线速表安装于机台上易于操作者监控.

Line speed table installed on the machine operators to monitor e

圈数到达后两段降速停止.

The number of laps reaches second and slow down to stop





# 嘉善力天机械有限公司

## JIASHAN LIK TIN MACHINERY CO., LTD.

■ 地址: 浙江省嘉善台升大道3号2幢层

■ 电话(Sales Direct): 0573-84583229

力天机械

■ <http://www.liktinmachinery.com>

■ E-mail: iwashi@vip.163.com

### 设备明细Equipment details:

#### ●动力压轮Power pressure wheel

左压轮设置有动力装置

The left pressure wheel is equipped with a power device

防止线材打滑

Prevent wire slipping

增加卷曲力

Enhance curling force



#### ●安全防护装置Safety protection device

安全门采用气压式自动开和关, 开启时机械自动停止

The safety door adopts pneumatic automatic opening and closing, and the machine automatically stops when opening

乱线自动停止装置及刹车系统(放线装置)

Automatic stop device and brake system (paying off device)

断线自动停止装置及刹车系统。

Automatic cut-off stop device and brake system.

故障自动报警装置Automatic fault alarm device

#### ●电控系统 Electrical control system:

控制箱采用防尘装置. 所有按钮采用防尘防水装置, 附电抗稳压器, 电控系统质量高, 寿命

The control box is dust-proof. All buttons are dustproof and waterproof with a voltage re

The electronic control system has high quality and long lifetime.

#### ●噪音程度 Noise level:

低于 85 dBA (below 85 dBA)





# 嘉善力天机械有限公司

JIASHAN LIK TIN MACHINERY CO., LTD.

■ 地址: 浙江省嘉善台升大道3号2幢层

■ 电话(Sales Direct): 0573-84583229

力天机械

■ <http://www.liktinmachinery.com>

■ E-mail: iwashi@vip.163.com

## 备注 Remarks:

1. 以上技术数据仅供参考, 尚有以下相关因素会直接影响伸线质量、产量及速度  
The above technical data is for reference only, there are the following factors will directly affect the quality of wire drawing, production, and
  1. 盘元质量及尺寸  
Plate quality and size
  2. 伸线眼模  
Eye die
  3. 盘元之酸洗及皮膜之品质  
Plate acid pickling and film quality
  4. 润滑因素  
Lubrication factor
  5. 操作技术  
Operation technology
  6. 成品规格及质量  
Finished product specifications and quality
  7. 影响抽线速度与质量, 包括当地气候与湿度状况  
Affect the speed and quality of pumping lines, including local climate and humidity conditions
  8. 伸线减面率  
Drawing Reduction rate
  9. 其它附属设备及操作经验  
Other ancillary equipment and operation experience
2. 买方须自行处理之项目 The purchaser shall deal with the item:
  - A. 电器线路安装工程 Electrical wiring project:
    - a) 落地式控制箱至操作桌至机械之电源动力线、控制线、讯号线路安装及外部电源线安装至落地式控制箱。  
Floor control box to the operating table to the power of the power line, control line, signal line installation and external power cord installed the floor control box.
    - b) 落地式控制箱应置于在防尘室之现场工程  
Floor control box should be placed in the field of dustproof room
    - c) 防尘室之冷气系统  
Dust-proof room of air conditioning system



# 嘉善力天机械有限公司

**JIASHAN LIK TIN MACHINERY CO., LTD.**

■ 地址：浙江省嘉善台升大道3号2幢层

■ 电话(Sales Direct): 0573-84583229

**力天机械**

■ <http://www.liktinmachinery.com>

■ E-mail: iwashi@vip.163.com

## B. 水管路工程 The water project:

### a) 循环冷水槽

Circulating cooling water tank

### b) 循环冷水槽至机械之水管路工程

Circulating cold water tank to mechanical water pipeline project

### c) 冷却水塔...等冷却系统

Cooling towers... Etc the cooling system

## C. 汽压管路工程 Steam pressure pipeline engineering:

### a) 空压机

Air compressor

### b) 空压机至机械现场之汽压管路安装工程

Air compressor to mechanical site of the steam pressure pipeline installa

## D. 配合机械之土木安装工程 With the mechanical installation of the civil works 以上设备每一道流程含基本操作指导与教育培训。

Each of the above equipment with basic operational guidance and education and training.

每一道流程含基本使用说明书、易损零件图册、标准件明细表、易损件配置图、电器线路图、接线图等相关配件说明书、常见故障排除说明

Each process with basic instructions, vulnerable parts Atlas, standard parts wearing parts configuration map, Electrical circuit diagram, wiring diagram a other related accessories manual, common troubleshooting instructions.

## 试车事宜 Commissioning:

### A 力天会派遣两位试车工程师前往贵司厂内进行机器试机运转，并提供相关安装与操作技术之教育培训，为期7日。（每人每日美元\$200）

We will supply two test engineers to your factory for 7 days to machine commissioning and provide relevant education or training installation and operation technology.

operation technology. Everyone usd200 per day

### B 力天所负责制造之机械及电气控制范围内，如有故障将全权负责，但其他与机器无关之责将不处理，如生产技术，等其余周边无法配合之设备。

we are responsible for the manufacture of mechanical and electrical control range. within the scope of the failure we will be solely responsible,

but other non-machine-related responsibilities will not be dealt with, such as producti and other equipment that cannot be matched around.

### C 报价包不含相关试车人员来回机票，当地住宿，每天前往试车工厂交通费用(包含接机及送往机场)及相关饮食费用(包含抵达日与离开日)。

The offer dont include the relevant trainer round-trip air ticket, local accommodation, daily travel to the trial plant (including pick-up and airport transfer) and related food costs (including arrival date and departure date).

如有延长试车时间之必要，超过所预定之维修日期，费用则需另计。

If there is necessary to extend the time ,the cost would be charged by your company.



# 嘉善力天机械有限公司

## JIASHAN LIK TIN MACHINERY CO., LTD.

地址: 浙江省嘉善台升大道3号2幢层

电话(Sales Direct): 0573-84583229

力天机械

http://www.liktinmachinery.com

E-mail: iwashi@vip.163.com

### 产品价格 Product price:

生产设备 Production equipment	规格 Spec.	数量QTY	(EUR) Unit price	(EUR) Total
伸线设备 Drawing machine	倒立式滑落型伸线机 Inverted slipping type extension machine			
	TLF-2000+HD-800	1 LINE	€ 62,900	€ 62,900
伸线设备 Drawing machine	倒立式滑落型伸线机 Inverted slipping type extension machine			
	TLF-2000+HD-1000	1 LINE	€ 73,400	€ 73,400
伸线设备 Drawing machine	自动盘元送线机+车头机+倒立式滑落型伸线机 AS/AL30+HD-1200			
	Automatic disk feeder +Turning machine + Inverted slipping type extensio (含液压夹头、含动力压轮)	1 LINE	€ 209,000	€ 209,000
Rolling head machine	(Including hydraulic chuck and power pressure wheel)			
	棍压线头机 RH-13	1 SET	€ 4,500	€ 4,500
	翻转式棍压线头机 RHT-25	1 SET	€ 11,400	€ 11,400
<b>TOTAL</b>			<b>EUR</b>	<b>361,200</b>

### 交易条件 Terms of Payment:

交货时间 Delivery time:

收到定金后, 约100个工作日 about 100 days after receiving the deposit

付款条件 Payment terms:

50%第一期款(定金) 50% for the first payment (deposit)

50%第二期款, 出货前电汇(交货款) 50% in the second payment, t/t before shipment (payme

货币别 : (EUR)

以上价格不含到厂安装、配线工程

The above price does not contain the plant installation, wiring project