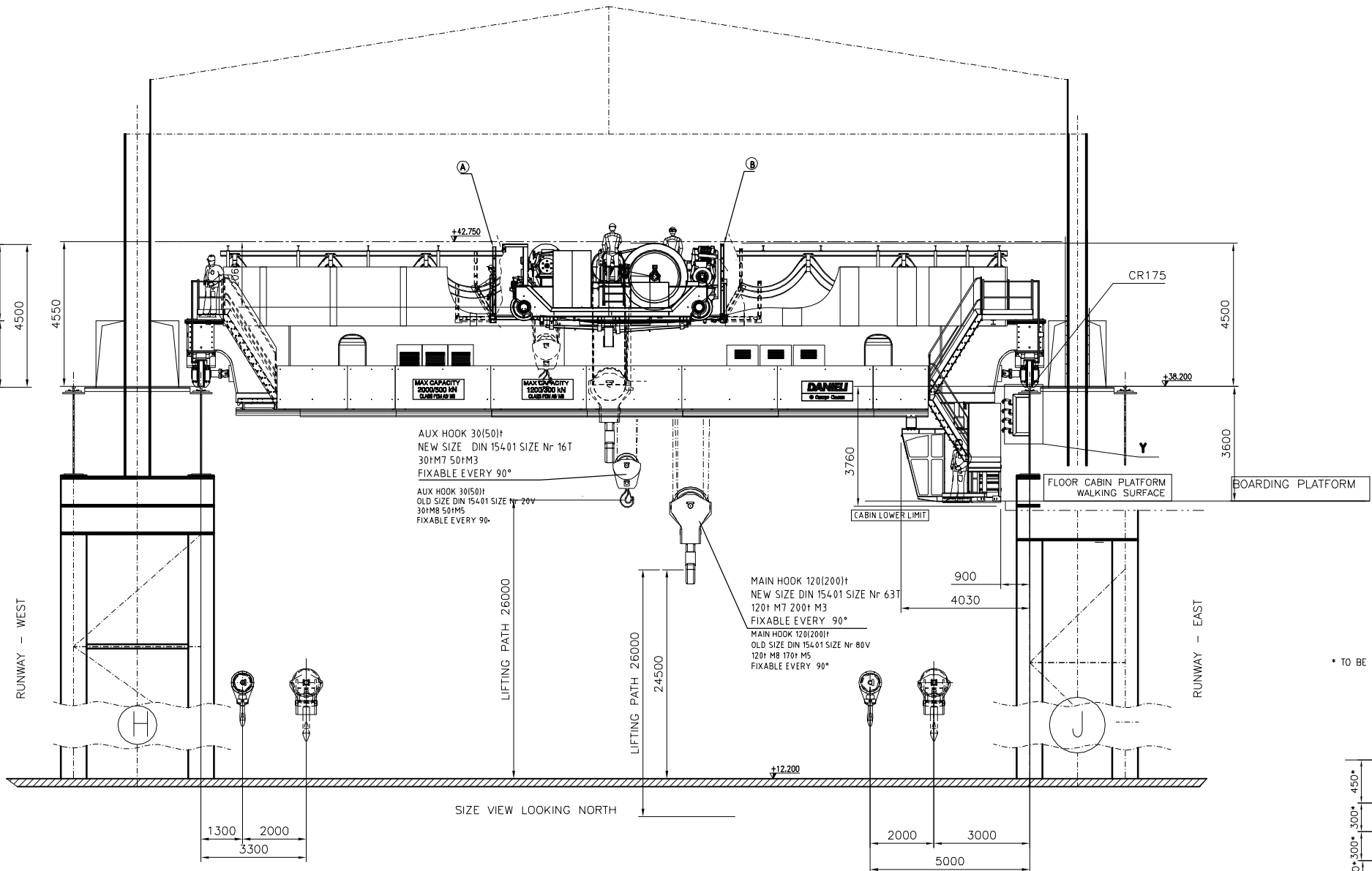
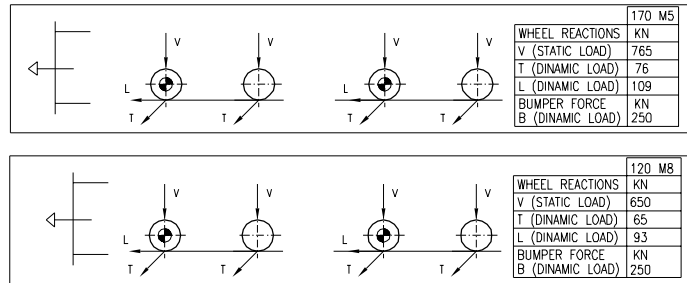


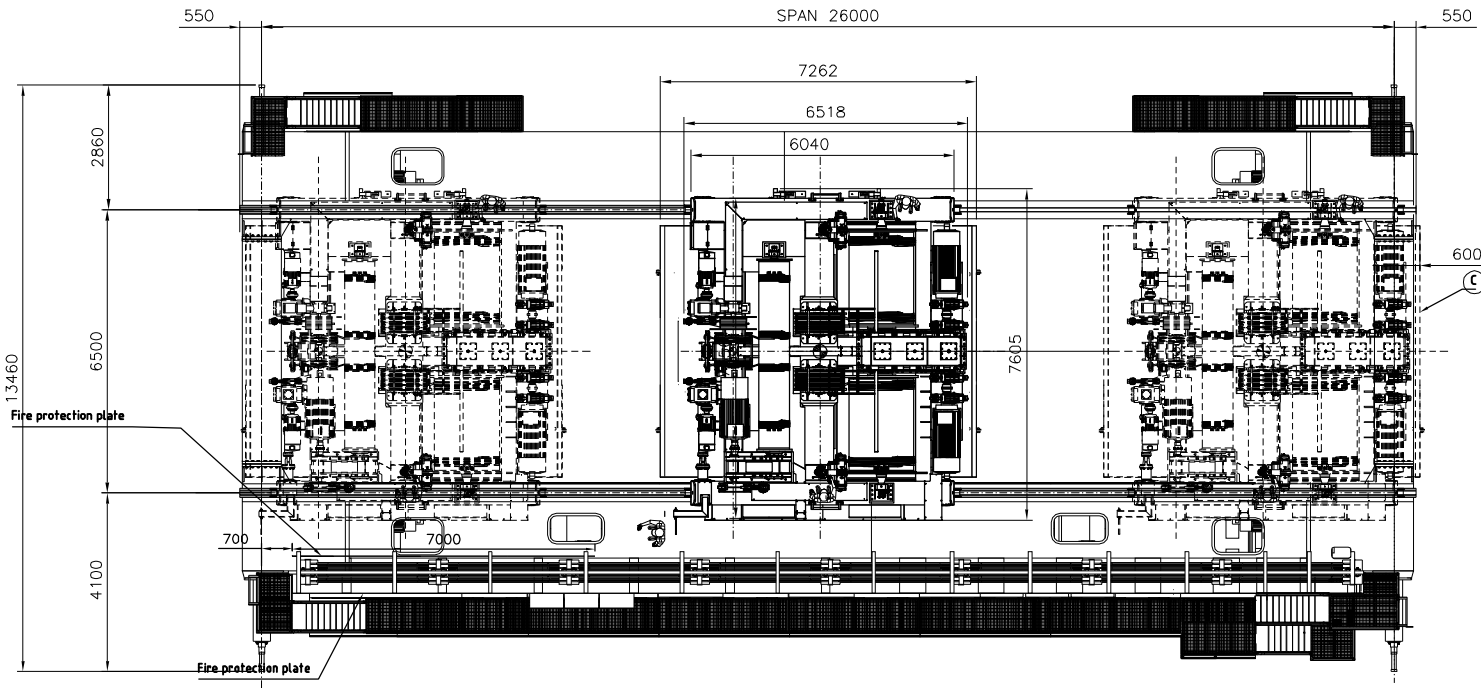
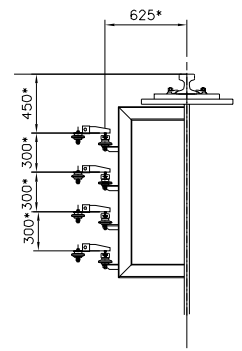
Fire Protection plate
TECHNICAL DATA

CLASS ACCORDING TO STRUCTURE	FEM	A8(A5)-M8(M5)
CAPACITY		
MAIN HOIST	kN	120(M8)-200(M3)
AUX HOIST	kN	30(M8)-50(M3)
SPEED		
MAIN HOIST	m/l'	10
AUX. HOIST	m/l'	15
TROLLEY	m/l'	30
BRIDGE	m/l'	75
NOTES		
POWER SUPPLY	V/Hz	400/50
CONTROL VOLTAGE	V/Hz	220/50
START PER HOUR		360
CYCLE DUTY FACTOR	Ed.%	100
CONTROL		AIR CONDITIONED CABIN+HEAVY DUTY A/C
ALTITUDE	s.l.m.	<1000
AMBIENT TEMPERATURE	°C	-10/+80
POWER		
MAIN HOIST	kW	2x200
AUX HOIST	kW	1x160
MAIN TROLLEY TRAVERSING	kW	2x22
BRIDGE	kW	4x45



* TO BE CHECKED AND CONFIRMED BY CUSTOMER

Y (1:20)



08	Mag	2014	AGGIORNATO DISEGNO	Cono M
23	Gen	2013	EMISSORE	Cono M
00			ISSUE	Forst C

Project Name

DANIELI
CENTRO CRANES

Job nr
Checked from
Replaces

Family code/Machine code
8000

GRU PORTATA 120/30 AB MB (200/50 A3 M3)
CRANE CAPACITY 120/30 AB MB (200/50 A3 M3)

Scale 1:60
Formal AO
Nr. of sheets 001
Revision 00
Sheet 001

DANIELI Shop number
6.265781.B

According to the DANIELI & C. SpA considers this document to be a company secret and therefore prohibits any person to reproduce or disclose it or make it known in whole or in part to other parties or to competitors without specific written authorization of DANIELI & C. Management.
File # 6265781B_001_REV04

