

QUOTATION OF AUTO YARN CONE PACKING MACHINE

SABA-TEKS



Regards Sincerly,
METİN ÇAKICI
Tel : +90 (533) 734 1741
Email : metincakici@metinoks.com.tr

M. Faizan (Sales Manager)
Tel : +90 (505) 097 6820
Email : Faizan@metinoks.com.tr

JETSTORE

JETSTORE - YARN STORAGE UNIT

This section is designed for non-stop operation of the machine.

Will be installed by the operator due to its conventional structure as a result of the step-by-step loading of cones by 12. A total of 120 bobbins can be loaded into and packed machine (JetPack) automatically.

This situation is the time for the operator to deal with other parties it recognizes.



JetStore Technical Specifications

Installed Electric Power	1 KW
Compressed Air Pressure	6 Bar
Maximum Bobbin Diameter	300 mm
Minimum Bobbin Diameter	160 mm
Loaded Bobbin Count	120 Bobbin
Machine Weight	1050 kg
Production	900 Bobbin/h



JETPACK

JETPACK - YARN CONE PACKING UNIT

Outer diameter 160 mm to 300 mm yarn bobbins are wrapped with a polyethylene film by pushing them through the tapers without touching the yarn, and consequently wrapping the yarn bobbins into cone. Since there is no gluing process during bagging is very fast and it is very easy to open when the bag opened again.

It is suitable for labelling of cones together with machine equipment, weighting and weaving together and labelling of sacks



JetPack Technical Specifications	
Installed Electric Power	1 KW
Compressed Air Pressure	6 Bar
Maximum Bobbin Diameter	300 mm
Minimum Bobbin Diameter	160 mm
Packing Material	HD Polyethylen
Film Width	800-1000 mm
Film Length	700-1000 mm
Maximum Film Diameter	240 mm
Machine Weight	1200 kg
Production	900 Bobbin/h



JETBAG

JETBAG - YARN CONES TO THE BAG UNIT

The machine is fit for the automatic insertion of the bobbins, coming from wrapping machine JETPACK into polyethylene bags, following a pre-programmed bobbins position. Possibility to place the bobbins in one or two layer. The loading of the empty bag as well as sewing of the full bag after the filling operations are manual



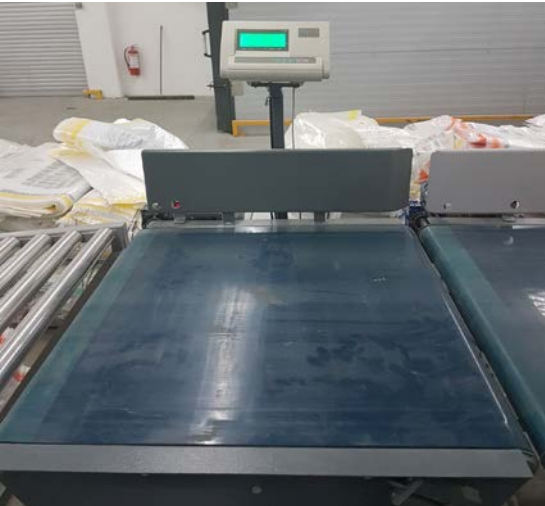
JetBag Tech. Specifications

Installed Electric Power	1 KW
Compressed Air Pressure	6 Bar
Maximum Bobbin Diameter	300 mm
Minimum Bobbin Diameter	160 mm
Bag Width	600-1300 mm
Bag Length	600-1400 mm
Machine Weight	1200
Production	650 Bobbin/h

Vertical Conveyor



Horizontal Conveyor



SINGLE CONE WEIGHT - LABELLING SYSTEMS



**SINGLE CONE WEIGHT WITH
AUTOMATIC EJECTION**

Cones from Jet-Store section is transfer to jet-Pack step conveyor one by one. Single cone weight unit is place on step conveyor. During passing through weighing unit, if cone is under mentioned weight, it will transfer to the labeling unit, If not, Cone will eject from the system into a basket placed near.

**Inside Cone Automatic
Labelling**

The system automatically adheres the label into each yarn bobbin cone. The tag information is sent from the ready template or sent by the customer.



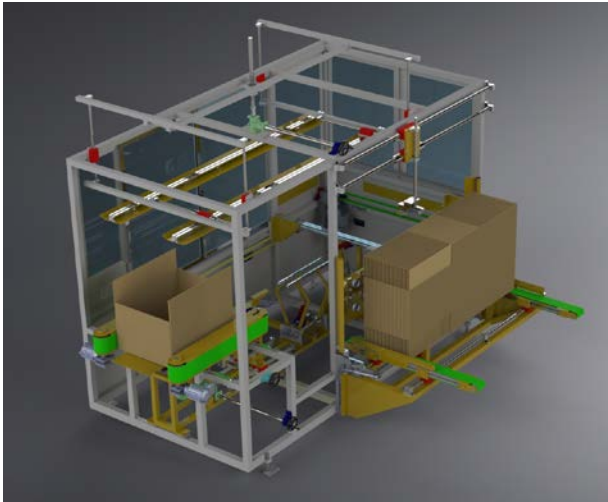
JETBOX

JETBOX - YARN CONES TO THE BOX UNIT

The box erector automatically opens and forms the cardboard box from stack of flattened corrugated boxes. The automated package bagging machine (JETPACK) wraps each bobbin in a polyethylene plastic film bag. A layer of 12 packages (e.g. 4 x 3) is grouped together before a full layer is placed horizontally together before a full layer is placed horizontally into the box. Cardboard separator sheets are placed between layers. Sealing the top of box with taping. Weighting then labelling with Thermal printer.



JetBox Tech. Specifications	
Installed Electric Power	2 KW
Compressed Air Pressure	6 Bar
Maximum Bobbin Diameter	300 mm
Minimum Bobbin Diameter	160 mm
Packing Material	Cardboard
Box Width	400-600 mm
Box Length	500-800 mm
Box Height	350-700 mm
Machine Weight	2060 kg
Production	500 Bobbin/h



Box Palletizer

"Palletizer"

The Palletizer machine is designed to automatically arrange the final box onto the pallet. Pallet arrangement can be designed according to customer request. Number of boxes as per x-axis , y-axis and Z-axis is selectable by screen



Palletizer Tech. Specifications	
Installed Electric Power	4 KW
Compressed Air Pressure	6 Bar
Maximum Box width	500
Minimum Box width	390
Machine Weight	1455 KG
Production	1.5 min/box

METİNOKS MEKATRONİK SAN.VE TİC.LTD.ŞTİ

ADDRESS: Marmaracık Mah.4.Sanayi Cad.No:36/1 59870 ERGENE/TEKİRDAĞ/TÜRKİYE
EMAIL:info@metinoks.com.tr TEL:90(282)6732592 FAX:90(282)6732059

USED COMPANENTS AND EQUIPMENTS ON OUR MACHINES

GearBoxes	Yılmaz Redüktör	Turkey
Motors	Gamak	Turkey
Terminals And Boxes	Klemsan	Turkey
Electrical Cables	Ünal Kablo	Turkey
Pneumatic pipe and fittings	Camozzi / SMC	Italy / Japan
Pneumatic Cylinders	Camozzi / SMC	Italy / Japan
Pneumatic Valves	Camozzi / SMC	Italy / Japan
HMI Panels	DELTA	Taiwan
Main PLC	DELTA	Taiwan
Motor Inverters	DELTA	Taiwan
Contactors	Schneider, Siemens	Germany
Fuses	Schneider, Siemens	Germany
Relays	Finder-Klemsan	Germany/TR
Motor Thermal Relays	Schneider	Germany
Bearings Units and Housing	SKF	Sweden
Sensor And Fotocell's	SICK	Germany
Button,Switches,Lights And Boxes	Schneider, Siemens	Germany

All Parts Dyeing with Electrostatic Painting on our Site
Companents which we used on machine will be work till 50C degree and Maximum %15 humidity

Supply Voltage	400V - 50 HZ +- %5 AC
Control Voltage	24 DC
Air Supply	6 Bar
Default Machine Color	RAL 7035
Default Machine Direction	Left Side Direction

Color and Direction can be chaning depending of customer request



METİNOKS MEKATRONİK SANAYİİ VE TİCARET LİMİTED ŞİRKETİ

25-Jul-2022

METİNOKS REFERANS LİSTESİ

Firma	Şehir / Ülke	Adet	Makine
MEM TEKSTİL	MARAŞ / TR	1	JS+JP+Jbag
YUNUS İPLİK TEKSTİL	L.BURGAZ / TR	1	JS+JP+Jbag+Jpal+Jstreç
GÖLİPLİK	BURSA / TR	2	JS+JP+Jbag
SULTON TEKSTİL	UZBEKİSTAN	2	JS+JP+Jbox+Jpal+Jstreç
ABM COTTON	ÇORLU /TR	1	JS+JP+Jbag
MAYFİL TEKSTİL	BURSA / TR	2	JS+JP+Jbag JS+JP+Jpal+Jstreç
ALOHA TEKSTİL	ÇORLU /TR	2	JS+JP
MURAT YAPI TEKSTİL	MALATYA/TR	2	JS+JP+Jbag+Jpal
SÖNMEZ İPLİK	BURSA/TR	1	JS+Jbox
FİRAT ENTEGRE	MALATYA/TR	1	JS+JP+JBag
AKSA IPLIK	YALOVA/TR	1	JP+ Jbag
UTIT Trascar	ITALY	8	JP+JBag
VINATEX GROUP	VIETNAM	1	JS+JP+Jbag+Jbox+Jpal+ BoxPalletizer
ADIM TEKSTİL	ISPARTA / TR	1	JS+JP+JBag
İSKÜR TEKSTİL	K.MARAŞ/TR	1	JP+JBag
NISHAT MILLS LIMITED	PAKİSTAN/SKP	1	JS+JP+JBag+JBox
NURYILDIZ TEKSTİL	ÇORLU/TR	1	JetPack
ELSE TEKSTİL	ÇORLU/TR	1	JP+JB+JBox+Jpal+JStreç(2)
ENA TEKSTİL	ISPARTA /TR	1	JetPack
ALKAPLAR TEKSTİL	K.MARAŞ/TR	1	JS+JP+JBag
SIEGER SPINTECH	INDIA	1	JS+JP+JBag
GÜLLE TEKSTİL	ÇORLU /TR	2	JS+JP+JBag
BEŞLER TEKSTİL	KAYSERİ /TR	2	JS+JP+Jbag
FLOKSER TEKSTİL	ÇORLU/TR	1	JS+JP+JBag
MURAT YAPI TEKSTİL	EDİRNE / TR	4	JS+JP+JBag
LİLA KAĞIT (MARMARA İPLİK)	ERGENE / TR	1	JetStore
PİRAMİT İPLİK	M.EREGLİSİ / TR	1	JS+JP+JBox+Jstreç
İMKA İPLİK	ERGENE /TR	1	JS+JP+JBag+Jstreç
AKCANLAR TEKSTİL	G.ANTEP / TR	3	JS+JP+JBag
YUNUS İPLİK TEKSTİL	L.BURGAZ / TR	1	JS+JP+JBag
YALÇIN MAKİNE	ÇORLU / TR	1	JetStreç

JS = JetStore (yükleme)
JP = JetPack (poşetleme)
JBag = JetBag (Çuvallama)
JBox = JetBox (Kolileme)
Jpal = Jetpal (Paetleme)
JStreç = Jetstreç (Streçleme)

METİNOKS MEKATRONİK SAN.VE TİC.LTD.ŞTİ

ADDRESS: Marmaracık Mah.4.Sanayi Cad.No:36/1 59870 ERGENE/TEKİRDAĞ/TÜRKİYE
EMAIL:info@metinoks.com.tr TEL:90(282)6732592 FAX:90(282)6732059



**METİNOKS MEKATRONİK
SANAYİİ VE TİCARET LİMİTED ŞİRKETİ**

25-Jul-2022

SAMPLE CONFIGURATIONS AND PRICES

No	Description	Unit	Unit Price	Value
1	JetStore	1	€ 16,200.00	€ 16,200.00
2	JetPack	1	€ 38,400.00	€ 38,400.00
3	Jetbag Unit	1	€ 25,000.00	€ 25,000.00
4	JetBox (opening unit)	1	€ 15,000.00	€ 15,000.00
5	JetBox (Filling Robot+ closing system)	1	€ 27,300.00	€ 27,300.00
6	Inside Cone Automatic Labelling	1	€ 6,600.00	€ 6,600.00
7	Box weighing	1	€ 3,300.00	€ 3,300.00
8	Box Automatic labeling	1	€ 6,600.00	€ 6,600.00
9	Box Strapping	1	€ 8,000.00	€ 8,000.00
10	Bag Weight	1	€ 3,600.00	€ 3,600.00
11	Bag labelling (Manual)	1	€ 1,080.00	€ 1,080.00
12	Box Palletizer	1	€ 36,000.00	€ 36,000.00
			Total Value	187,080.00 €

Optional

No	Description	Unit	Unit Price	Value
1	Single Cone weight with automatic ejection of cone	1	€ 7,500.00	€ 7,500.00



**METİNOKS MEKATRONİK
SANAYİİ VE TİCARET LİMİTED ŞİRKETİ**

25-Jul-2022

GENERAL CONDITIONS

Total Value	187,080.00 €
--------------------	---------------------

FOB - TURKEY

Shipment Date	Within 10 weeks after opening LC
Price is include	Product installation in your company Shipping - Transport
Price Exlcuded	Insurance Establishment of our employees for next 80 Euro daily,Round trip air ticket, Local Transportation and Accommodation
Payment	%100 LC irrevocable
BANK ACCOUNTS	DENIZBANK A.S. Account Name : METINOKS MEKATRONİK SAN. VE TIC LTD. STI. EURO IBAN : TR26 0013 4000 0500 1269 8000 17
Warranty period	1 (One) year against the fault caused by production of METINOKS
Validity Period	30 days

COMPANY SIGNATURE