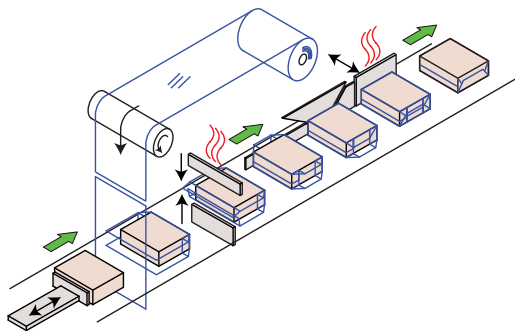


Sollas packaging machines are well-known worldwide for their excellent packaging quality, at realistic prices. By continual innovation, together with the regular introduction of improved technology, we are able to maintain the high standards, demanded by our customers and by ourselves.

The Sollas SE40 was designed to be a high quality overwrapper at a limited investment, offering the opportunity to purchase an original Sollas machine without compromising on quality, flexibility and reliability.

With the SE40, Sollas focuses on a number of key industries. More particular, perfumes/cosmetics, tobacco, pharmaceuticals, tea/coffee, confectionery and foods.



The overwrapping principle

The most important features of the Sollas SE40 in short;

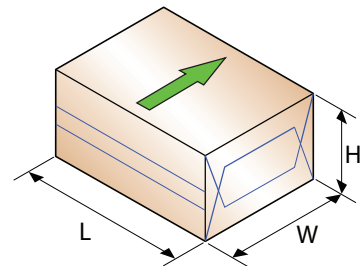
- Competitively priced
- Highly reliable cam drive technology
- One level product infeed and outfeed
- Servo driven film feed
- Siemens PLC control
- Low priced change-parts
- Change parts from earlier models (except M-series) are compatible
- Trailing edge seal system
- Quick change-over facilities
- Flexible size-ranges
- Easy operation and maintenance



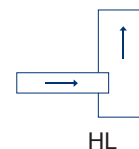
Specifications

The SE40 can be supplied with an angled infeed from the right hand or the left hand side. The products can be placed on the infeed conveyor by hand or the machine can be connected to an upstream machine.

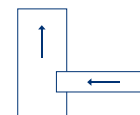
technical details			
all dimensions are in millimetres			
product size range	Sollas SE40		
	L	W	H
minimum standard	45	40	16
minimum adapted ¹⁾	-	-	7
maximum standard	300	240	96
maximum adapted ¹⁾	336	-	140
output ²⁾	40 strokes per minute		
basic configuration	HL / HR		
size change time ²⁾	10 - 20 minutes		
film width	60 - 400		
film-roll diameter max.	320		
packaging material ³⁾	PP, coated paper, etc.		
air consumption	4 nl / stroke (without accessories)		
working pressure	6 bar		
power consumption	2.5 kW (without accessories)		
machine weight (nett)	950 kg approximately		
machine dimension	see sketch		
machine colour	RAL 9006 (light grey)		
optional accessories	teartape applicator, printmark registration, film slitting, perfumery style spot/stripe seals, felt linings, special colour, Universal Folding Section (no change parts needed!)		
drive system	cam / servo		
control system	PLC (Siemens)		



Product orientation as it goes through the folding and sealing section

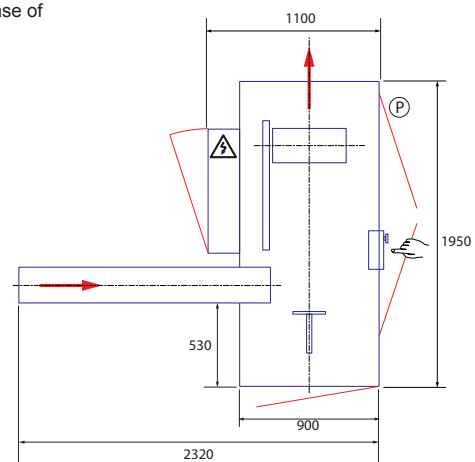


HL



HR

- 1) modifications in one dimension may limit the size range in the other dimensions or affect the machine output
- 2) depending on product, machine configuration and packaging material
- 3) In principle all commonly used heat-sealable wrapping materials can be used. In case of doubt, Sollas will gladly test any kind of material you may wish to handle.



General dimensions of an HL configuration

Sollas Holland B.V. - Bruynvisweg 1 - 1531 AX Wormer - The Netherlands | T +31 75 628 4751 - F +31 75 628 0266 - E contact@sollas.com

Sollas France - T +33 366 880 535 | Sollas Deutschland - T +49 2154 95352-0 | Sollas UK - +44 1256 896 930 | Sollas America - T +1 215 822 0600