

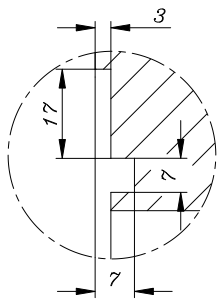
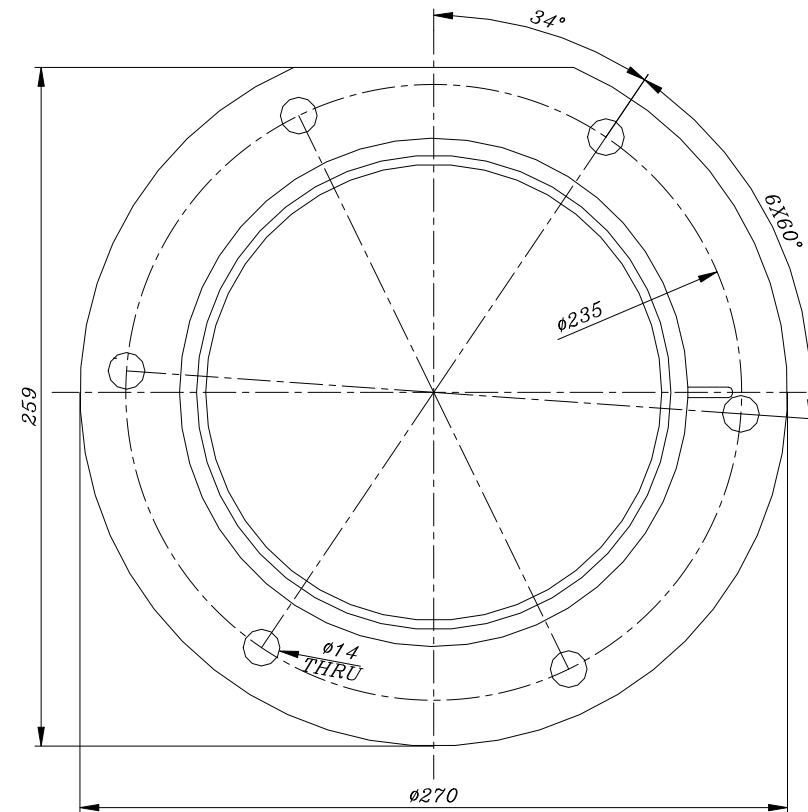
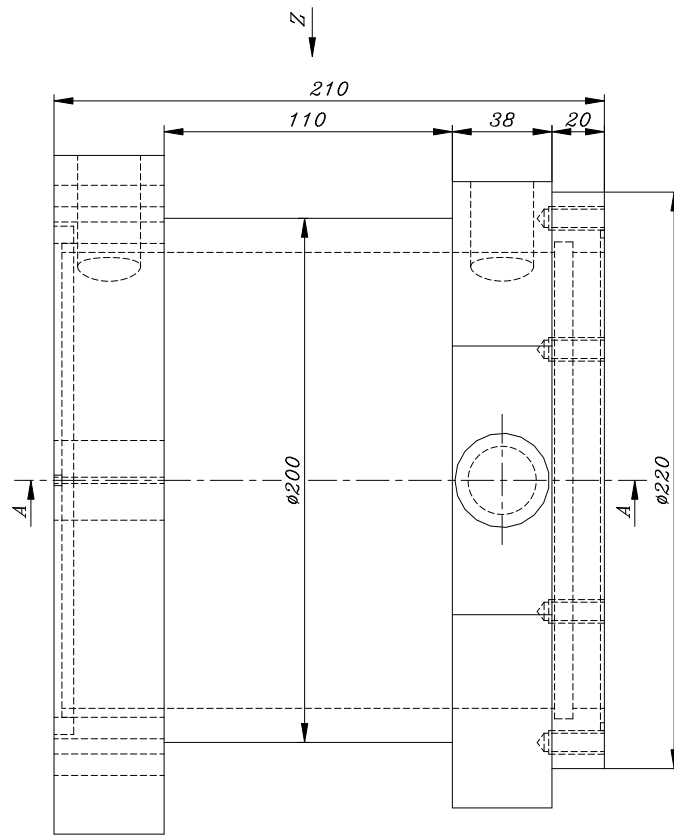
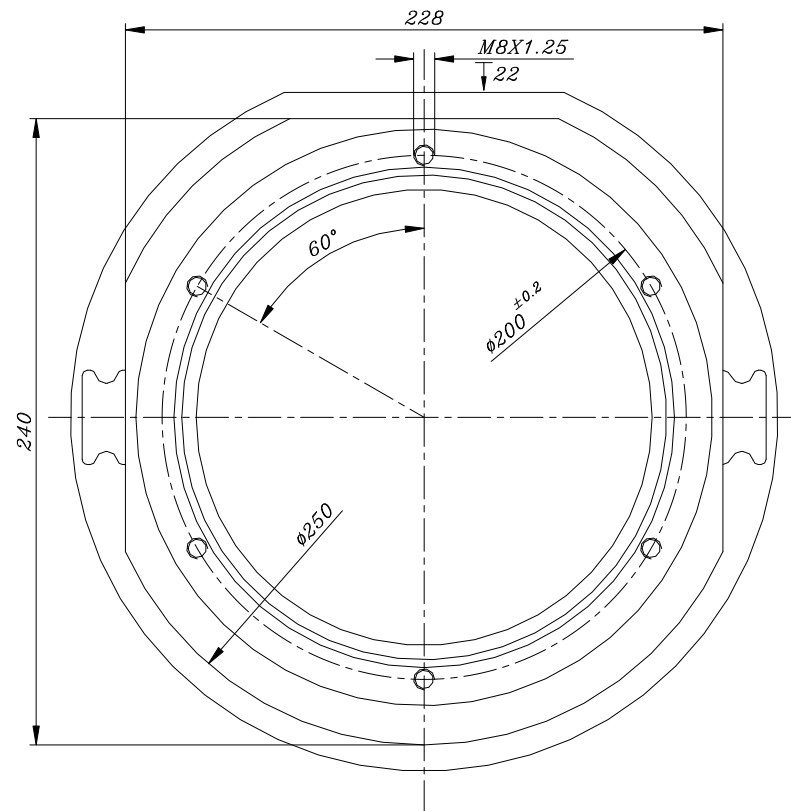
Section C-C

Section B-B

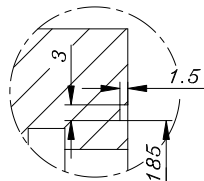
Section A-A

Permissible Variations
in untoleranced dimensions
DIN ISO 2768-1 Fine

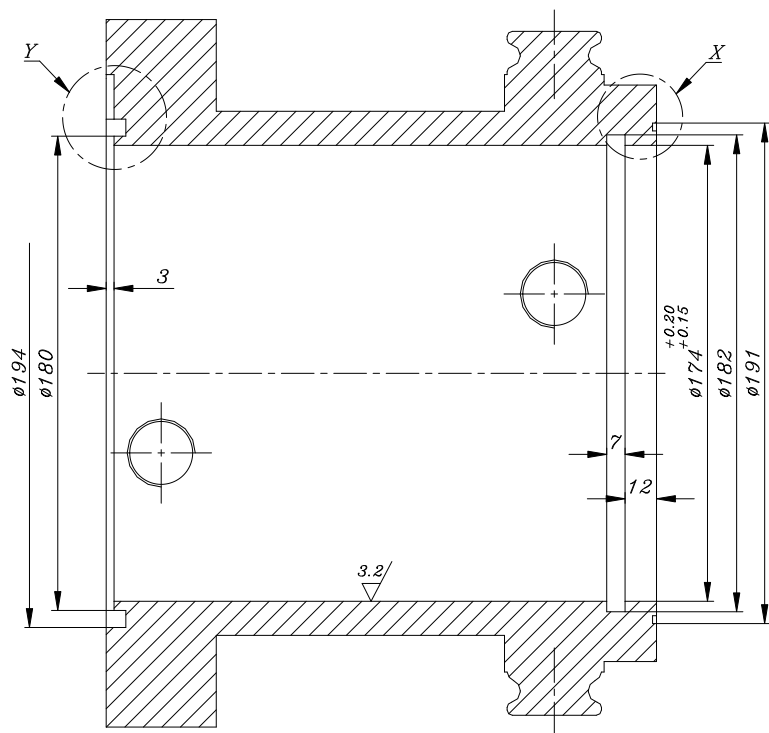
6.3/ (3.2/1.6/)		Ø130	M6	-0.008 -0.033
Factory: Cast & Roll		Machine: Furnace		Sheet: 2
Material: C10700		Hardness: 125HB		Part Name: Inner Tube Sheets: 2
90	Date	Name	Sub assembly name:	Scale:
drawn	05.01	M. Baitollahi	Primary Cooler	1:2
Checked	H. Farahbakhsh		Reference drawing NO.:	Part NO.:
Approved	M. Badiie			Work QTY.: 1
		Drawing NO.:		Min. Stock:
		P7000-0003		
SHAHID BAHONAR COPPER INDUSTRIES CO.				
ALL RIGHTS IN THIS DRAWING ARE RESERVED TO US				



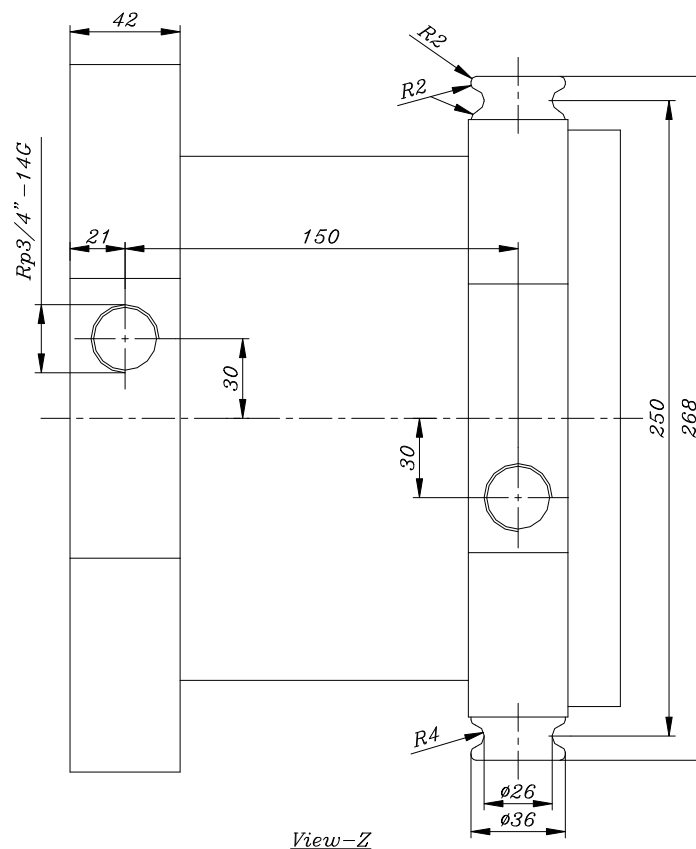
Detail-Y
Scale=1:1



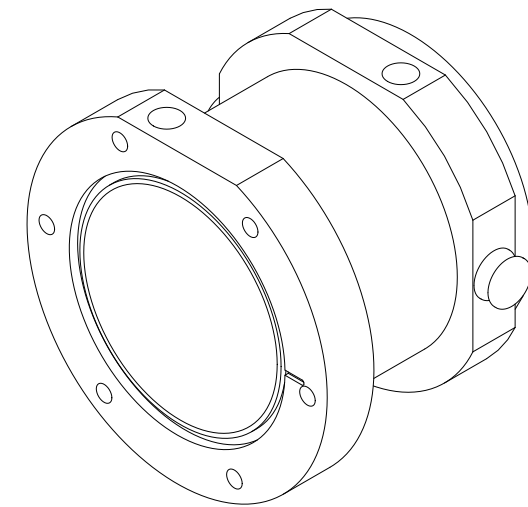
Detail-X
Scale=1:1




Section A-A



View-Z



6.3/ (3.2/)

Factory: Cast & Roll		Machine: Furnace		Sheet: 1
Material: C10700	Hardness: 125HB	Part Name: Primary Cooler		2 Sheets:
90	Date	Name	Sub assembly name:	Scale: 1:2
drawn	05.01	M. Baitollahi	Refrence drawing NO.:	Part NO.:
Checked		H. Farahbakhsh		Work QTY.: 1
Approved		M. Radice	Drawing NO.:	Min. Stock:
			P7000-0003	
			SHAHID BAHONAR COPPER INDUSTRIES CO.	

Permissible Variations
in untoleranced dimensions
DIN ISO 2768-1 Fine

ALL RIGHTS IN THIS DRAWING ARE RESERVED TO US