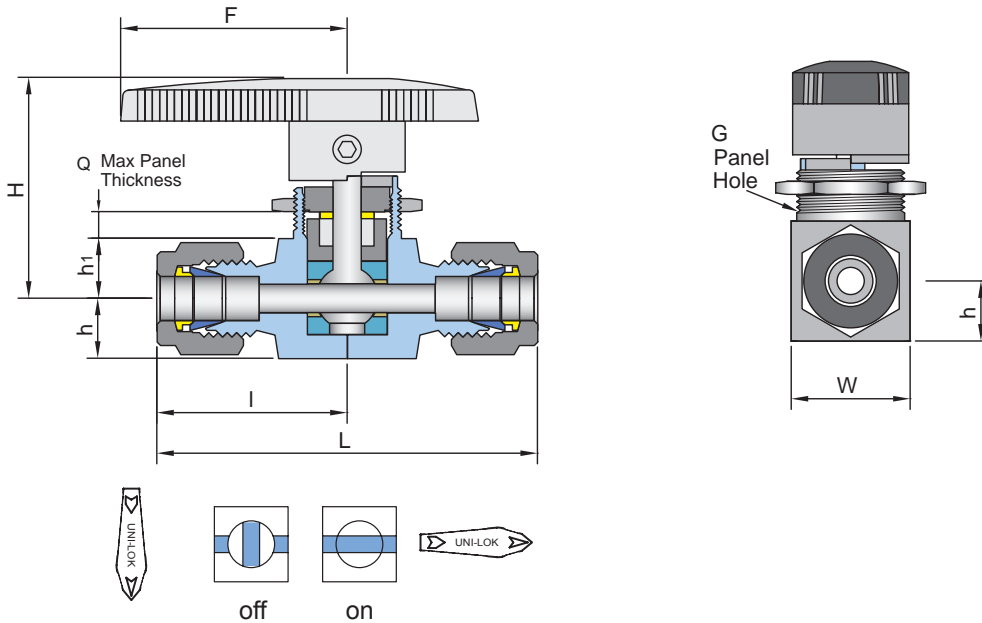


VB3 series

(2 Way, Shut-Off Both Uni-Lok Tube Fittings or Both Female Threads)

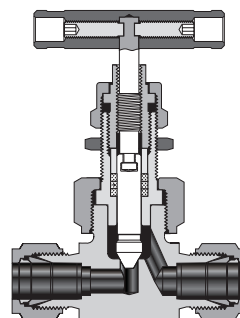


Ordering Information & Dimensions

Part No.	End Connection		Orifice	CV	Dimensions (mm)								
	Inlet	Outlet			L	I	h	h ₁	H	G	Q	W	F
VB31	U-04T-	1/4" Uni-Lok	4.8	2.4	62.6	31.3	10.0	10.6	39.6	19.8	4.8	19.8	40.0
	U-06T-	3/8" Uni-Lok		1.5	66.6	33.3							
	U-M06T-	6mm Uni-Lok		2.4	62.6	31.3							
	U-M08T-	8mm Uni-Lok		1.5	63.2	31.6							
	F-02N-	1/8" Female NPT		1.2	50.8	25.4							
	F-04N-	1/4" Female NPT		0.9	52.4	26.2							
VB32	U-06T-	3/8" Uni-Lok	7.1	6.0	77.8	38.9	14.3	14.5	52.8	28.0	9.0	28.6	51.0
	U-M10T-	10mm Uni-Lok		6.0	77.8	38.9							
	F-04N-	1/4" Female NPT		3.0	63.6	31.8							
	F-06N-	3/8" Female NPT		2.6	63.6	31.8							
VB33	U-08T-	1/2" Uni-Lok	10.3	12.0	98.6	49.3	18.0	17.5	61.9	38.1	9.4	38.1	76.2
	U-12T-	3/4" Uni-Lok		6.4	99.2	49.6							
	U-M12T-	12mm Uni-Lok		12.0	98.8	49.4							
	U-M20T-	20mm Uni-Lok		6.4	100.0	50.0							
	F-08N-	1/2" Female NPT		6.3	80.0	40.0							

Female ISO7/1 Tapered Threads (PT) are available for all fractional sizes of VB3F series valves.
Add "R" as a suffix instead of "N".

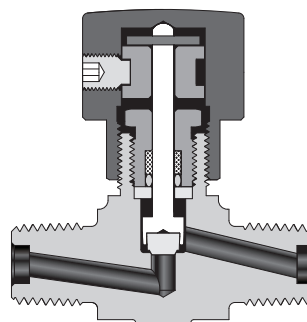
Dimensions are for reference only and are subject to change without prior notice.



Nonrotating-stem Needle Valves

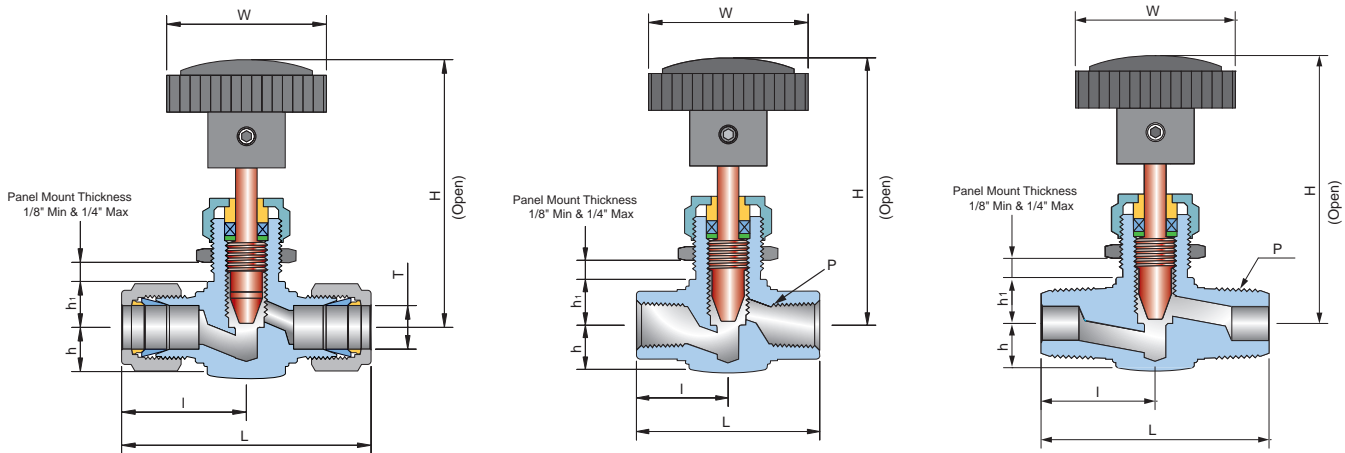
ND Series

- ⦿ One-piece forged body.
- ⦿ Variety valve body material: 316 SS, 316L SS, 304 SS, 304L SS, Alloy 400 and brass, other material please contact with manufacture.
- ⦿ Orifice (mm): 2, 4, 6.4
- ⦿ Maximum working pressure: 20.7 Mpa (3000 psig).
- ⦿ Temperature range: -28°C to 232°C (-20°F to 450°F).
- ⦿ Designed handle to prevent contaminants from entering into the valve.
- ⦿ Non-rotating stem, soft stem tip.
- ⦿ End connections type and size:
1/8" to 1/2", M10 to M20 thread;
1/4" to 1/2", 3 mm to 12 mm tube fitting.



VN5 series

(Straight Pattern, Both Uni-Lok Tube Fittings or Both Female or Male Threads)



Ordering Information & Dimensions

Part Number	End Connection		Orifice	CV	Dimensions (mm)						Panel Hole Drill Size
	Inlet	Outlet			L	I	h	h ₁	Round Handle H(open)	W	
VN51	U-02T-	1/8" Uni-Lok	2.0	0.09	49.3	24.9	11.2	7.9	57.9	25.4	11.9
	U-M03T-	3mm Uni-Lok			49.3	24.9					12.2
	F-02N-	1/8" Female NPT			47.8	23.9					11.9
	M-02N-	1/8" Male NPT			38.1	19.1					11.9
VN52	U-04T-	1/4" Uni-Lok	4.4	0.37	56.3	28.2	9.5	9.5	65.9	34.7	13.5
	U-M06T-	6mm Uni-Lok			56.8	28.4					
	U-M08T-	8mm Uni-Lok			59.0	29.5					
	F-02N-	1/8" Female NPT			42.0	21.0					
	M-02N-	1/8" Male NPT			41.2	20.6					
	M-04N-	1/4" Male NPT			50.0	25.5					
VN53	U-06T-	3/8" Uni-Lok	6.3	0.73	67.8	33.9	12.5	13.5	80.6	46.7	20.0
	U-08T-	1/2" Uni-Lok			73.2	36.6					
	U-M10T-	10mm Uni-Lok			67.4	33.7					
	U-M12T-	12mm Uni-Lok			73.4	36.7					
	F-04N-	1/4" Female NPT			54.0	27.0					
	M-06N-	3/8" Male NPT			53.0	26.5					
	MF-04N-	1/4" Male NPT 1/4" Female NPT			55.6	26.5					
VN54	U-08T-	1/2" Uni-Lok	7.2	1.80	83.2	41.6	17.0	17.0	97.0	55.5	23.0
	U-12T-	3/4" Uni-Lok			83.2	41.6					
	F-06N-	3/8" Female NPT			65.0	30.0					
	F-08N-	1/2" Female NPT			65.0	32.5					
	M-08N-	1/2" Male NPT			66.0	33.0					
	MF-08N-	1/2" Male NPT 1/2" Female NPT			66.0	33.0					
VN55	U-16T-	1" Uni-Lok	12.7	3.20	99.2	49.6	20.0	20.0	86.7*	85*	29.0
	F-12N-	3/4" Female NPT			75.0	37.5			87.2*		
	F-16N-	1" Female NPT			89.0	44.5					

* Dimensions for bar handle. Round handle for these sizes are not available.
 ISO/1 Tapered Threads (PT) are available for all fractional sizes of VN5 series valves.
 Add "R" as a suffix instead of "N".

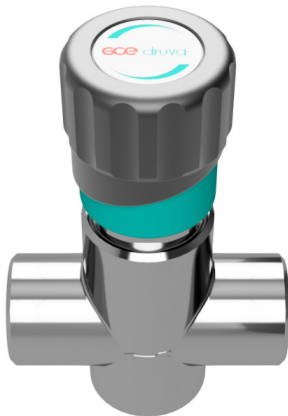
Dimensions are for reference only and are subject to change without prior notice.

VSLDRMAR – DRUVA®PUR REGULATING VALVE

VALVE | PURE LINE (STAINLESS STEEL) | 20 m³ SERIES | DIAPHRAGM REGULATING VALVE | MANUAL ACTUATION | 2-PORT VERSION



2-port metal diaphragm regulating valve is used in supply systems for pure, inert, flammable, oxidizing gases and gas mixtures. This stainless steel version valve is also usable for corrosive and toxic gases and gas mixtures. Maximum gas purity is 6.0.



SPECIAL FEATURES:

- > Elgiloy diaphragm tightening system to atmosphere
- > Compact design
- > Designed and approved in accordance with relevant sections of ISO 10297:2015
- > Electrostatic chargeability test
 - Fulfills requirements according to ISO 80079-36; IEC TS 60079-32-1 and German TRGS 727
 - Usable in EX- areas zones 1 and 2 for gases with explosion risk group I; IIA; IIB; IIC

TECHNICAL DATA	
Working temperature:	-20 °C to +60 °C
Inlet / outlet ports:	1/4" NPT female Further connections – see technical drawing
Max. working pressure:	50 bar
Cv-value:	< 0,02
Seat diameter:	2 mm
Leakage rate seat:	<5x10 ⁻⁴ mbar l/s (Helium)
Leakage rate outside:	<1x10 ⁻⁹ mbar l/s (Helium)
Filter	1x for each inlet 1x for each outlet
Weight:	0,29 kg
Material gas wettet parts:	
Valve body:	Stainless Steel
Valve diaphragm:	1x Elgiloy
Valve seat:	Metal sealing
Valve poppet:	Stainless Steel
Test in production:	Pressure test with Helium of each item
	Seat leakage test with Helium of each item
	Helium leak test of each valve against atmosphere
	Test of functionality of each item
Approvals during development:	Type test in accordance with relevant sections of ISO 10297
	Electrostatic chargeability test
	<ul style="list-style-type: none"> • Fulfills requirements according ISO 80079-36, IEC TS 60079-32-1 and German TRGS 727 • Usable in EX-areas zones 1 and 2 for gases with explosion risk group I, IIA, IIB, IIC

POINT-OF-USE REGULATORS EMD 400/404



Single-stage, for inert, reactive, flammable and oxidizing gases and gas mixtures, purity max. 6.0,
 Inlet pressure 40 bar / 600 psi,
 Outlet pressure range 0.1 – 10.5 bar / 1 – 150 psi

HIGHLIGHTS

- > ECD-suitable
- > Great variety of assembly possibilities in laboratory furniture due to the modular design of the LabSystem
- > Gas type specific colour indication labels according to EN 13792
- > Analysis version available

FEATURES

Standard version regulator with gauge, inlet at rear, outlet downwards. May be combined with inlet shut-off valve MVA 400, wall connector, metering valve MVR 400G and MVR 400W, flashback arrestor (FBA), different gauges and diverse accessory (see previous pages).

APPLICATION

For wall, plate, suspended and bench mounting, with great variety of combinations, covering any laboratory gas supply demand.



TECHNICAL DATA	
Body material:	stainless steel 316L (1.4404) specially cleaned and electro polished or brass CW614 (CuZn39Pb3) specially cleaned, chrome-plated
Pressure gauge range:	Type 400: 0 – 2.5/6/16 bar (0 – 35/85/235 psi) Type 404: 0 – 3 / 6 bar (0 – 45/85 psi)
Weight:	0,8 kg
Inlet - outlet:	G 3/8" f - G 1/4" f

POINT OF USE REGULATOR EMD 400-06 WALL MOUNTED WITH CHECK VALVE

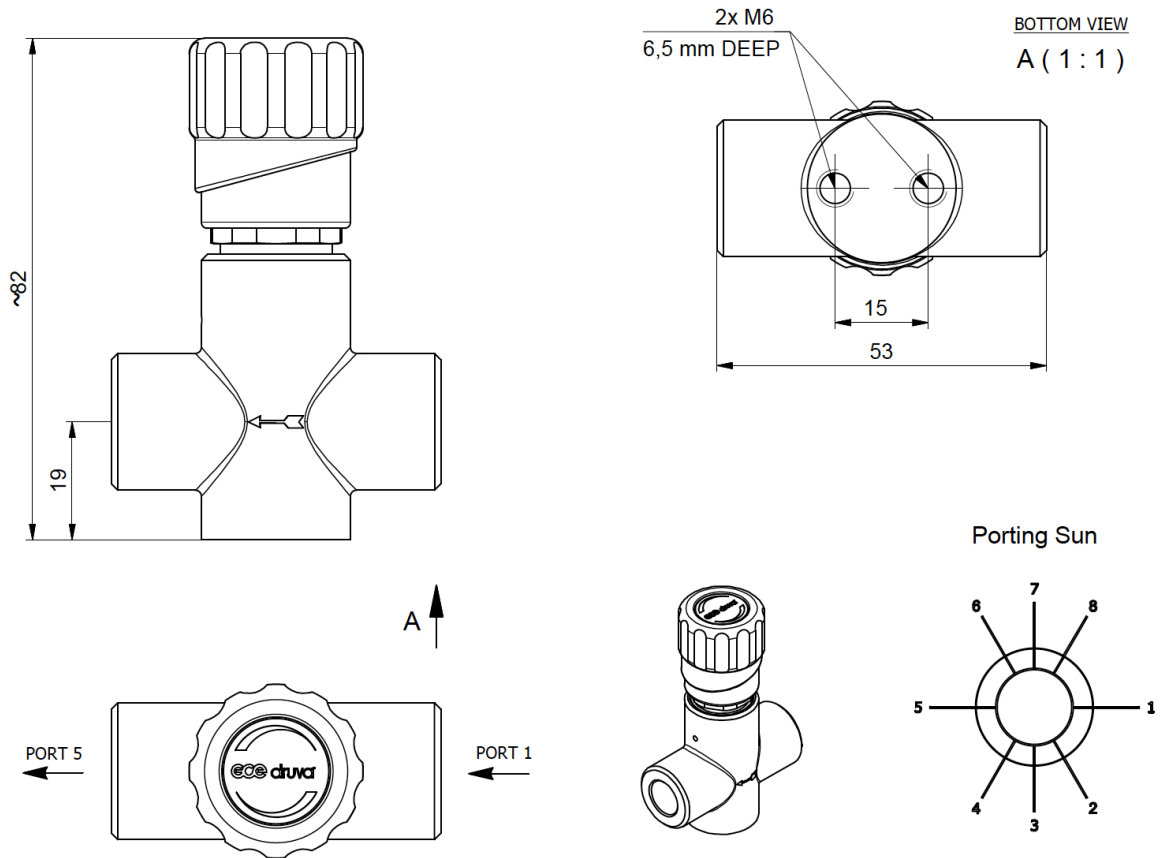
Item No.	Type	Material	Design	Inlet (bar)	Outlet
S93001180	emd40006 sse10 g14g14 cv	SS	outlet point - with check valve	40	0-10
S93001106	emd40006 sse6 g14g14 cv	SS	outlet point - with check valve	40	0-6
S93001179	emd40006 sse1,5 g14g14 cv	SS	outlet point - with check valve	40	0-1,5
S93001178	emd40006 bce10 g14g14 cv	BC	outlet point - with check valve	40	0-10
S93001177	emd40006 bce4 g14g14 cv	BC	outlet point - with check valve	40	0-6
S93001176	emd40006 bce1,5 g14g14 cv	BC	outlet point - with check valve	40	0-1,5

ORDER CODE

Type	Variation	Material	Inlet pressure	Outlet pressure	Inlet	Outlet*	Gas type
EMD 400	-01	BC	E	1	CL6 BC	CL6 BC	GAS
EMD 400 = standard	-01 = standard	BC = brass	EMD 400: E = 40 bar	EMD 400: 1 = 0.1 – 1 bar / 1 – 15 psi	G3/8 = C3/8"f G1/4 = G1/4"f	G1/4 = G1/4"f CL4, CL6, CL8	Please specify
EMD 404 = analysis version	-06 = plate mounted -41 = bench version -42 = wall assembly -07 = 06 + FBA -10 = 06 + MVR -43 = 41 + MVR -44 = 42 + MVR	SS = stainless steel	/ 600 psi EMD 404: E = 12 bar / 175 psi	4 = 0.2 – 4 bar / 3 – 60 psi 10 = 0.5 – 10.5 bar / 7 – 150 psi EMD 404: 2,2 = 0.1 – 2.2 bar/ 1.5 – 32 psi 4 = 0.5 – 4 bar / 7 – 60 psi	NPT1/4 = NPT1/4"f CL4, CL6, CL8 CL 1/4, CL 1/8" NO 1/4", NO 1/8"	CL 1/4, CL 1/8" BC = brass chrome-plated SS = stainless steel	
					BC = brass chrome-plated SS = stainless steel steelUNI		

* Outlet: CL... = compressed fitting for ... mm outside diameter, NO... = hose connector for ... mm hose inside diameter.

TECHNICAL DRAWING



- N14F - NPT1/4" female
- 0000 - Without (Port 3 and Port 7)
- M03S - Compression Fitting ø 3MM SST
- M06S - Compression Fitting ø 6 MM SST
- M08S - Compression Fitting ø 8 MM SST
- M10S - Compression Fitting ø 10 MM SST
- M12S - Compression Fitting ø 12 MM SST

- IX2S - Compression Fitting ø 1/8" SST
- IX4S - Compression Fitting ø 1/4" SST
- IX6S - Compression Fitting ø 3/8" SST
- IX8S - Compression Fitting ø 1/2" SST

ORDER CODE:

Example for a Valve | PUR Linie | Stainless Steel | Low Flow | Diaphragm Regulating Valve | Manual Actuation | 2-Port Version

VSL	DR	M	AR	EX	N14F (1/4" NPT female)	0000	N14F (1/4" NPT female)	0000
	Type	Actuation	Port Code	Working Pressure (bar)	Connection Port 1	Connection Port 3	Connection Port 5	Connection Port 7
	DR Diaphragm Regulating Valve	M Manual	AR 2-Port (1 In 5 Out)	EX 50	possible connection	0000 without	possible connection	0000 without
					see technical drawing		see technical drawing	

Order code (as described above) without special characters or spaces! Complete Order Code **VSLDRMAREXN14F0000N14F0000**

